

STATE OF ILLINOIS
DEPARTMENT OF TRANSPORTATION

F.A.S. RTE.	SECTION	COUNTY	TOTAL SHEETS	SHEET NO.
1412	106(SLP-5;CR-3)	HENDERSON	19	1
		ILLINOIS	CONTRACT NO. 68H99	

INDEX OF SHEETS

- 1 COVER SHEET
- 2 GENERAL NOTES
- 3-5 SUMMARY OF QUANTITIES
- 6 SCHEDULE OF QUANTITIES
- 7 ALIGNMENT
- 8 TYPICAL SECTIONS
- 9 MAXIMUM WIDTH SIGNING DETAIL
- 10-11 TRAFFIC CONTROL PLANS
- 12 REMOVAL PLAN
- 13 SITE PLAN
- 14 BOX CULVERT EXTENSION DETAILS
- 15-19 CROSS SECTIONS

HIGHWAY STANDARDS

000001-08	630301-09	701301-04	704001-08
280001-07	701001-02	701311-03	725001-01
442201-03	701006-05	701321-18	780001-05
630001-13	701201-05	701901-09	782006-01

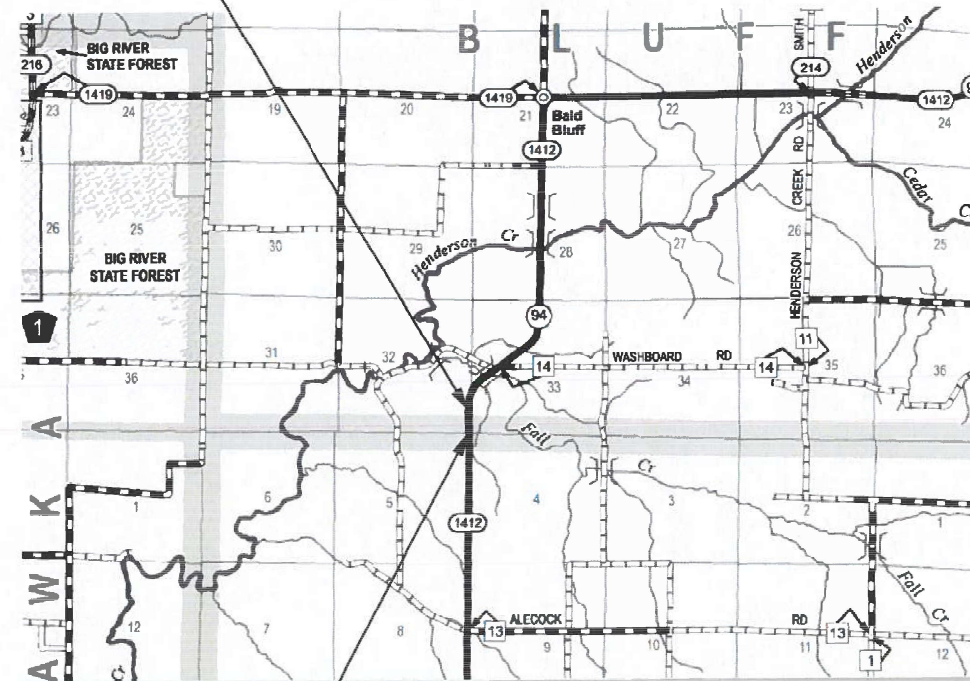
PROPOSED
HIGHWAY PLANS

FAS ROUTE 1412 (IL 94)
SECTION 106(SLP-5;CR-3)
SLOPE STABILIZATION AND CULVERT EXTENSION
HENDERSON COUNTY

C-94-018-24

BEGIN IMPROVEMENT
STA 433+91.00

T11N T12N

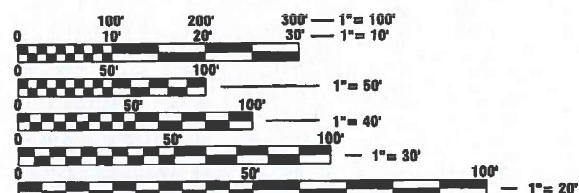


END IMPROVEMENT
STA 437+71.00

GROSS LENGTH = 380 FT. = 0.072 MILES
NET LENGTH = 380 FT. = 0.072 MILES

DESIGN DESIGNATION

US 94: MAJOR COLLECTOR
ADT: 350 (2021)
SU: 30
MU: 50



FULL SIZE PLANS HAVE BEEN PREPARED USING STANDARD ENGINEERING SCALES. REDUCED SIZED PLANS WILL NOT CONFORM TO STANDARD SCALES. IN MAKING MEASUREMENTS ON REDUCED PLANS, THE ABOVE SCALES MAY BE USED.

J.U.L.I.E.
JOINT UTILITY LOCATION INFORMATION FOR EXCAVATORS
1-800-892-0123
OR 811

PROJECT ENGINEER: BEN TELLEFSON
PROJECT MANAGER: WILL MOSER
CATALOG NO. 036465-00D
CONTRACT NO. 68H99

MARK C. LEE DATE

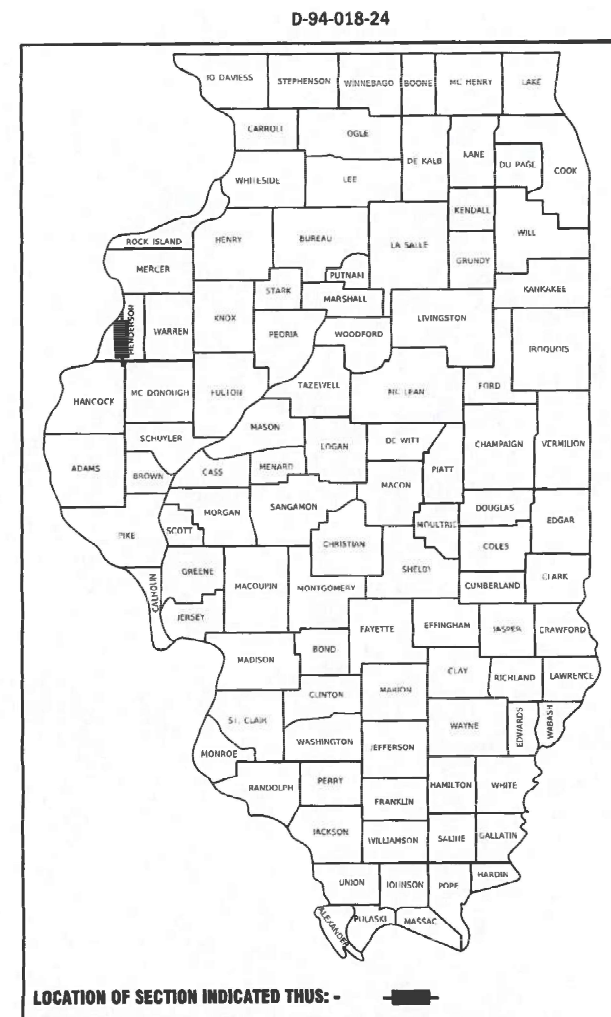
REGISTERED PROFESSIONAL ENGINEER
STATE OF ILLINOIS NO. 062-060864
LICENSE EXPIRES NOVEMBER 30, 2025

KLINGNER
& ASSOCIATES, P.C.

Engineers • Architects • Surveyors
www.klingner.com

Galesburg, Illinois
49 North Prairie Street
309.342.4042

DESIGN FIRM NO. 184-2738



PROJECT DESCRIPTION:

SLOPE REPAIR ALONG IL 94

STATE OF ILLINOIS
DEPARTMENT OF TRANSPORTATION

SUBMITTED May 14 2024
Kessil A. Barnethson
REGIONAL ENGINEER

June 28, 2024
[Signature]
ENGINEER OF DESIGN AND ENVIRONMENT

June 28, 2024
[Signature]
DIRECTOR OF HIGHWAYS PROJECT IMPLEMENTATION

PRINTED BY THE AUTHORITY
OF THE STATE OF ILLINOIS

RATES OF APPLICATION TABLE

AGGREGATE (SURFACE, BASE, SUBBASE, OR BACKFILL)	1.60 TON / CU YD
STONE DUMPED RIPRAP	1.50 TON / CU YD

GENERAL NOTES

1. THE THICKNESS OF BITUMINOUS MIXTURES SHOWN ON THE PLANS IS THE NOMINAL THICKNESS. DEVIATIONS FROM THE NOMINAL THICKNESS WILL BE PERMITTED WHEN SUCH DEVIATIONS OCCUR DUE TO IRREGULARITIES IN THE EXISTING SURFACE OR BASE ON WHICH THE BITUMINOUS MIXTURE IS PLACED.
2. THE CONTRACTOR SHALL PROTECT AND CAREFULLY PRESERVE ALL PROPERTY MARKERS AND MONUMENTS UNTIL THE OWNER, AUTHORIZED AGENT, OR LAND SURVEYOR HAS WITNESSED OR OTHERWISE REFERENCED THEIR LOCATION. WHERE SECTION OR SUB-SECTION MONUMENTS ARE ENCOUNTERED, THE ENGINEER SHALL BE NOTIFIED BEFORE SUCH MONUMENTS ARE REMOVED. THE CONTRACTOR SHALL BE RESPONSIBLE FOR HAVING AN AUTHORIZED SURVEYOR RE-ESTABLISH ANY SECTION OR SUB-SECTION MONUMENTS DESTROYED BY HIS OPERATIONS.
3. IN ADDITION TO FIELD SURVEYS, PLAN DIMENSIONS AND DETAILS RELATIVE TO THE EXISTING FACILITIES HAVE BEEN TAKEN FROM EXISTING PLANS AND ARE SUBJECT TO CONSTRUCTION VARIATIONS. IT SHALL BE THE CONTRACTOR'S RESPONSIBILITY TO VERIFY SUCH DIMENSIONS AND DETAILS IN THE FIELD. SUCH VARIATIONS SHALL NOT BE A CAUSE FOR ADDITIONAL COMPENSATION DUE TO A CHANGE IN THE SCOPE OF WORK; HOWEVER, THE CONTRACTOR WILL BE PAID FOR THE QUANTITY ACTUALLY FURNISHED AT THE UNIT PRICE BID FOR THE WORK.
4. ANY REFERENCE TO A STANDARD IN THESE PLANS SHALL BE INTERPRETED TO MEAN THE EDITION AS INDICATED BY THE SUB-NUMBER IN THE INDEX OF SHEETS OR THE COPY OF THE STANDARD INCLUDED IN THESE PLANS.
5. ANY EXISTING ROAD SIGNS THAT INTERFERE WITH CONSTRUCTION WILL BE REMOVED OR RELOCATED AS DIRECTED BY THE ENGINEER. AFTER THE CONSTRUCTION IS COMPLETED, THE CONTRACTOR WILL REPLACE THE SIGNS AS DIRECTED BY THE ENGINEER. THIS WORK WILL NOT BE PAID SEPARATELY BUT SHALL BE CONSIDERED INCIDENTAL TO THE CONTRACT AND NO COMPENSATION WILL BE ALLOWED.
6. SHOULD THE CONTRACTOR REQUEST OLD/EXISTING STRUCTURE PLANS, THEY CAN CONTACT THE PROJECT ENGINEER OR TEAM ENGINEER AS SHOWN ON THE COVER SHEET.
7. SAW CUTS REQUIRED FOR REMOVAL ITEMS WILL NOT BE PAID FOR SEPARATELY. THE COST OF THE SAW CUTS WILL BE INCLUDED IN THE RESPECTIVE REMOVAL PAY ITEM.
8. THE FOLLOWING MIXTURE REQUIREMENTS ARE APPLICABLE FOR THIS PROJECT:

LOCATION(S): MIXTURE USE(S):	HMA SURF CSE SHOULDERS TOP LIFT	SHOULDERS LOWER LIFTS
AC/PG:	PG 64-22	PG 64-22
DESIGN AIR VOIDS:	4.0% @ N DESIGN=50	4.0% @ N DESIGN=50
MIXTURE COMPOSITION: (GRADATION MIXTURE)	IL 9.5	IL 19.0
FRICITION AGGREGATE	MIX "D"	N/A
QUALITY	QA/QC	QA/QC
SUB-LOT SIZE	N/A	N/A

ENVIRONMENTAL REVIEWS

PRIOR TO THE USE OF ANY PROPOSED BORROW AREAS, USE AREAS (TEMPORARY ACCESS ROADS, DETOURS, RUN-AROUNDS, ETC.) AND/OR WASTE AREAS, THE CONTRACTOR SHALL FILE THE REQUIRED ENVIRONMENTAL RESOURCE REQUEST SURVEYS ACCORDING TO SECTION 107.22 OF THE STANDARD SPECIFICATIONS. THESE SURVEYS ARE REQUIRED IN ORDER FOR THE DEPARTMENT TO CONDUCT CULTURAL AND BIOLOGICAL RESOURCE SURVEYS FOR THE PROPOSED SITE.

THE REQUIRED ENVIRONMENTAL RESOURCE DOCUMENTATION SHALL INCLUDE THE FOLLOWING:

- * BDE FORM 2289 (BORROW SITE REVIEW)
- * BDE FORM 2290 (WASTE/USE AREA REVIEW)
- * A LOCATION MAP SHOWING THE SIZE LIMITS AND LOCATION OF THE USE AREA
- * COLOR PHOTOGRAPHS DEPICTING THE USE AREA
- * BORROW AREA ENTRY AGREEMENT FORM - D4 P10101

PRIOR TO ANY WASTE MATERIALS BEING REMOVED FROM THE CONSTRUCTION SITE THE REQUIRED ENVIRONMENTAL RESOURCE SURVEYS SHALL BE OBTAINED AND FILLED BY THE CONTRACTOR. EXCESS WASTE PRODUCTS REMOVED FROM THE CONSTRUCTION SITE SHALL BE DISPOSED OF AS REQUIRED IN SECTION 202.03 OF THE STANDARD SPECIFICATIONS.

ANY PROTRUDING METAL BARS SHALL BE REMOVED PRIOR TO THE DISPOSAL OF BROKEN CONCRETE AT APPROVED DISPOSAL SITES.

PLEASE NOTE THAT A MINIMUM OF FOUR WEEKS SHALL BE ALLOWED FOR THE DISTRICT TO OBTAIN THE REQUIRED WASTE SITE ENVIRONMENTAL CLEARANCES AND SIX WEEKS FOR THE REQUIRED BORROW SITE ENVIRONMENTAL CLEARANCES.

ORDERING LENGTH CONFIRMATION - DRAINAGE ITEMS

THE CONTRACTOR SHALL CONSULT WITH THE ENGINEER IN-REGARDS TO THE EXACT LENGTH OF THE BOX/PIPE CULVERTS, STORM SEWERS, AND/OR PIPE DRAINS REQUIRED, PRIOR TO ORDERING THESE ITEMS.

MODEL: D:\p\h\l
 FILE NAME: P:\Caleburg\2\filed\13081\DDOT - DIST 4 - PTB 201-033\Work Order 08 - FY 2023 Slope Repair\18_Transportation\Location_41CADD_Sheets\002-rh-GenNotes.dgn



USER NAME = aschaefer	DESIGNED -	REVISED -
PLOT SCALE = 40,0000 * / in.	DRAWN -	REVISED -
PLOT DATE = 5/6/2024	CHECKED -	REVISED -
	DATE -	REVISED -

**STATE OF ILLINOIS
DEPARTMENT OF TRANSPORTATION**

**F.A.S. ROUTE 1412 (IL 94)
GENERAL NOTES**

SCALE: NONE SHEET 1 OF 1 SHEETS STA. TO STA.

F.A.S. RTE.	SECTION	COUNTY	TOTAL SHEETS	SHEET NO.
1412	106(SLP-S;CR-3)	HENDERSON	19	2
CONTRACT NO. 68H99				
ILLINOIS		FED. AID PROJECT		

MODEL: Default
 FILE NAME: P:\Caledonia\2116313081\DOT - DIST 4 - PTB 201-023\Work Order 08 - FY 2023 Slope Repair\18_Transportation\Location_AICADD_Sheets\003_005-ht-Summary_4.dgn

CODE NO.	ITEM	UNIT	TOTAL QUANTITY	CONSTRUCTION CODE							
				HENDERSON COUNTY							
				100% STATE							
				LOCATION #4							
				0005							
RURAL											
20100500	TREE REMOVAL, ACRES	ACRE	0.6	0.6							
20200100	EARTH EXCAVATION	CU YD	345	345							
20201200	REMOVAL AND DISPOSAL OF UNSUITABLE MATERIAL	CU YD	12	12							
20400800	FURNISHED EXCAVATION	CU YD	365	365							
20700110	POROUS GRANULAR EMBANKMENT	TON	17	17							
21001000	GEOTECHNICAL FABRIC FOR GROUND STABILIZATION	SQ YD	17	17							
28000400	PERIMETER EROSION BARRIER	FOOT	400	400							
28100107	STONE RIPRAP, CLASS A4	TON	1752	1752							
28200200	FILTER FABRIC	SQ YD	2627	2627							
31101000	SUBBASE GRANULAR MATERIAL, TYPE B	TON	54	54							
44004250	PAVED SHOULDER REMOVAL	SQ YD	188	188							
44200150	PAVEMENT PATCHING, TYPE IV, 12 INCH	SQ YD	49	49							
48203029	HOT-MIX ASPHALT SHOULDERS, 8"	SQ YD	254	254							
50800105	REINFORCEMENT BARS	POUND	20	20							



USER NAME = aschaefer	DESIGNED -	REVISED -
	DRAWN -	REVISED -
PLOT SCALE = 40,0000 */ in.	CHECKED -	REVISED -
PLOT DATE = 5/6/2024	DATE -	REVISED -

STATE OF ILLINOIS
DEPARTMENT OF TRANSPORTATION

F.A.S. ROUTE 1412 (IL 94)
SUMMARY OF QUANTITIES

SCALE: NONE SHEET 1 OF 3 SHEETS STA. TO STA.

F.A.S. RTE.	SECTION	COUNTY	TOTAL SHEETS	SHEET NO.
1412	106(SLP-Sr-CR-3)	HENDERSON	19	3
CONTRACT NO. 68H99			ILLINOIS FED. AID PROJECT	

MODEL Path: \\c:\cal\calburg\2\filed\13081\DOT - DIST - 4 - PTB 201-023\Work Order 08 - FY 2023 Slope Repair\18_Transportation\Location_AICADD_Sheets\003_005-ht-Summary_4.dgn

CODE NO.	ITEM	UNIT	TOTAL QUANTITY	CONSTRUCTION CODE						
				HENDERSON COUNTY						
				100% STATE						
				LOCATION #4						
				0005						
				RURAL						
54001001	BOX CULVERT END SECTIONS, CULVERT NO. 1	EACH	1	1						
54002020	EXPANSION BOLTS ¾ INCH	EACH	8	8						
54248510	CONCRETE COLLAR	CU YD	0.5	0.5						
* 63000003	STEEL PLATE BEAM GUARDRAIL, TYPE A, 9 FOOT POSTS	FOOT	275	275						
* 63100167	TRAFFIC BARRIER TERMINAL, TYPE 1 (SPECIAL) TANGENT	EACH	2	2						
63200310	GUARDRAIL REMOVAL	FOOT	387	387						
67100100	MOBILIZATION	L SUM	1	1						
70100450	TRAFFIC CONTROL AND PROTECTION, STANDARD 701201	L SUM	1	1						
70103815	TRAFFIC CONTROL SURVEILLANCE	CAL DA	5	5						
70106500	TEMPORARY BRIDGE TRAFFIC SIGNALS	EACH	1	1						
70106700	TEMPORARY RUMBLE STRIPS	EACH	6	6						
70107025	CHANGEABLE MESSAGE SIGN	CAL DA	14	14						
70300100	SHORT TERM PAVEMENT MARKING	FOOT	3536	3536						
70300150	SHORT TERM PAVEMENT MARKING REMOVAL	SQ FT	1812	1812						

*= SPECIALTY ITEM



USER NAME = aschaefer	DESIGNED -	REVISED -
	DRAWN -	REVISED -
PLOT SCALE = 40,0000 */ in.	CHECKED -	REVISED -
PLOT DATE = 5/6/2024	DATE -	REVISED -

STATE OF ILLINOIS
DEPARTMENT OF TRANSPORTATION

F.A.S. ROUTE 1412 (IL 94)
SUMMARY OF QUANTITIES

SCALE: NONE SHEET 2 OF 3 SHEETS STA. TO STA.

F.A.S. RTE.	SECTION	COUNTY	TOTAL SHEETS	SHEET NO.
1412	106(SLP-S;CR-3)	HENDERSON	19	4
CONTRACT NO. 68H99			ILLINOIS FED. AID PROJECT	

MODEL: Default
 FILE NAME: P:\Caleburg\2\116313081\DOT - DIST - 4 - PTB 201-023\Work Order 08 - FY 2023 Slope Repair\18_Transportation\Location_AICADD_Sheets\003_005-rht-Summary_4.dgn

CODE NO.	ITEM	UNIT	TOTAL QUANTITY	CONSTRUCTION CODE							
				HENDERSON COUNTY							
				100% STATE							
				LOCATION #4							
				0005							
RURAL											
70307120	TEMPORARY PAVEMENT MARKING - LINE 4"- TYPE IV TAPE	FOOT	1768	1768							
70307210	TEMPORARY PAVEMENT MARKING - LINE 24"- TYPE IV TAPE	FOOT	22	22							
70400100	TEMPORARY CONCRETE BARRIER	FOOT	575	575							
70600250	IMPACT ATTENUATORS, TEMPORARY (NON-REDIRECTIVE), TEST LEVEL 3	EACH	2	2							
* 72501000	TERMINAL MARKER - DIRECT APPLIED	EACH	2	2							
* 78001110	PAINT PAVEMENT MARKING - LINE 4"	FOOT	3536	3536							
* 78200005	GUARDRAIL REFLECTORS, TYPE A	EACH	4	4							
78300202	PAVEMENT MARKING REMOVAL - WATER BLASTING	SQ FT	590	590							
X1200140	PRECAST CONCRETE BOX CULVERT (SPECIAL)	FOOT	20	20							
X7010202	TRAFFIC CONTROL AND PROTECTION, STANDARD 701321 (SPECIAL)	EACH	1	1							
Z0013798	CONSTRUCTION LAYOUT	L SUM	1	1							
* Z0054500	ROCK FILL	TON	23	23							

*= SPECIALTY ITEM



USER NAME = aschaefer	DESIGNED -	REVISED -
	DRAWN -	REVISED -
PLOT SCALE = 40,0000 */ in.	CHECKED -	REVISED -
PLOT DATE = 5/6/2024	DATE -	REVISED -

STATE OF ILLINOIS
DEPARTMENT OF TRANSPORTATION

F.A.S. ROUTE 1412 (IL 94)
SUMMARY OF QUANTITIES

SCALE: NONE SHEET 3 OF 3 SHEETS STA. TO STA.

F.A.S. RTE.	SECTION	COUNTY	TOTAL SHEETS	SHEET NO.
1412	106(SLP-Sr-CR-3)	HENDERSON	19	5
CONTRACT NO. 68H99			ILLINOIS FED. AID PROJECT	

TREE REMOVAL, ACRES

20100500			
STATION TO STATION	SIDE	WIDTH	ACRE
IL 94			
433+91.00	437+71.00	LT	VARIES
TOTAL			0.54
USE			0.60

HOT-MIX ASPHALT SHOULDERS, 8"

48203029				
STATION TO STATION	SIDE	WIDTH	SQ YD	
IL 94				
433+91.00	437+71.00	LT	6	253.3
TOTAL				253.3
USE				254

GUARDRAIL SCHEDULE

STATION TO STATION	SIDE	63000003	63100167	78200005	72501000
		SPBGR TYPE A 9' POSTS	TRAF BARRIER TERMINAL TYPE 1, SPECIAL (TANGENT)	GUARDRAIL REFLECTORS TYPE A	TERMINAL MARKERS DIRECT APPLIED
		FOOT		EACH	
IL 94					
433+96.00	437+71.00	LT	275.0	2	4
TOTALS			275.0	2	4

TEMPORARY RUMBLE STRIPS

70106700		
STATION	SIDE	EACH
IL 94		
414+16.00	RT	1
419+16.00	RT	1
424+16.00	RT	1
447+00.00	LT	1
452+00.00	LT	1
457+00.00	LT	1
TOTAL		6
USE		6

EARTH EXCAVATION SCHEDULE

LOCATION STATION TO STATION	SIDE	20200100	EARTH	EMBANKMENT	20400800
		EARTH EXCAVATION	EXCAVATION ADJUSTED (25%)		FURNISHED EXCAVATION
CU YD					
IL 94					
433+91.00	437+71.00	LT	345	260	625
TOTALS			345	260	625
USE			345	260	625

TRAFFIC CONTROL AND PROTECTION

LOCATION	70400100	70600250	
	TEMP CONCRETE BARRIER	IMPACT ATTENUATORS TEMP NR, TL3	
		FOOT	EACH
IL 94 (STAGE 1)			
432+96.00	438+70.00	575	2
TOTALS		575	2

TEMPORARY PAVEMENT MARKING - LINE 24" - TYPE IV TAPE

70307210			
STATION	SIDE	DESCRIPTION	WHITE FOOT
IL 94 (STAGE 1)			
431+16.00	RT	STOP LINE	11
440+00.00	LT	STOP LINE	11
TOTAL			22
USE			22

RIPRAP SCHEDULE

STATION TO STATION	SIDE	WIDTH	28100107	28200200
			STONE RIPRAP, CLASS A4	FILTER FABRIC
TON				
IL 94				
433+91.00	437+71.00	LT	VARIES	1751.4
TOTALS				1751.4
USE				1752

PAVEMENT MARKING REMOVAL - WATER BLASTING

78300202				
STATION TO STATION	SIDE	DESCRIPTION	SQ FT	
IL 94				
431+16.00	440+00.00	CL	DOUBLE	589.3
TOTAL				589.3
USE				590

TEMPORARY PAVEMENT MARKING - LINE 4"- TYPE IV TAPE

70307120			
STATION TO STATION	SIDE	DESCRIPTION	WHITE FOOT
IL 94 (STAGE 1)			
431+16.00	440+00.00	LT	EDGE LINE
431+16.00	440+00.00	RT	EDGE LINE
TOTAL			1768.0
USE			1768

SHORT TERM PAVEMENT MARKING

70300100					
STATION TO STATION	SIDE	DESCRIPTION	WHITE	YELLOW	FOOT
			IL 94		
431+16.00	440+00.00	LT	EDGE	884.0	
431+16.00	440+00.00	RT	EDGE	884.0	
431+16.00	440+00.00	CL	NO PASSING		1768.0
TOTAL				1768.0	1768.0
USE				3536	

SHORT TERM PAVEMENT MARKING REMOVAL

70300150				
STATION TO STATION	SIDE	DESCRIPTION	WHITE	SQ FT
IL 94 (STAGE 1)				
431+16.00	440+00.00	LT	EDGE LINE	294.7
431+16.00	440+00.00	RT	EDGE LINE	294.7
431+16.00		RT	STOP BAR	22.0
440+00.00	LT	STOP BAR		22.0
IL 94 (SHORT TERM)				
431+16.00	440+00.00	LT	EDGE LINE	294.7
431+16.00	440+00.00	RT	EDGE LINE	294.7
431+16.00	440+00.00	CL	CENTERLINE	589.3
TOTAL				1812.0
USE				1812

SUBBASE GRANULAR MATERIAL, TYPE B

31101000				
STATION TO STATION	SIDE	WIDTH	TON	
IL 94				
433+91.00	437+71.00	LT	7.2	53.8
TOTAL				53.8
USE				54

PAINT PAVEMENT MARKING - LINE 4"

78001110					
STATION TO STATION	SIDE	DESCRIPTION	WHITE	YELLOW	FOOT
			IL 94		
431+16.00	440+00.00	LT	EDGE	884.0	
431+16.00	440+00.00	RT	EDGE	884.0	
431+16.00	440+00.00	CL	NO PASSING		1768.0
TOTAL				1768.0	1768.0
USE				3536	

MISCELLANEOUS PAVING ITEMS SCHEDULE

NUMBER	ITEM	UNIT	TOTAL
28000400	PERIMETER EROSION BARRIER	FOOT	400

THIS SCHEDULE INCLUDES ESTIMATED QUANTITIES. THEY MAY BE REDUCED, INCREASED, OR DELETED BY THE ENGINEER BASED ON ACTUAL FIELD CONDITIONS. NO WORK INVOLVING THESE ESTIMATED QUANTITIES SHALL BE PERFORMED WITHOUT THE DIRECTION AND APPROVAL OF THE ENGINEER.

PAVEMENT PATCHING, TYPE IV, 12 INCH

44200150				
STATION TO STATION	SIDE	WIDTH	SQ YD	
IL 94				
436+07.00	436+47.00	LT	11	48.9
TOTAL				48.9
USE				49

BOX CULVERT EXTENSION

LOCATION	SIDE	54001001	54248510	50800105	54248510	21001000	Z0054500	X1200140	20201200	20700110
		BOX CULVERT END SECTIONS, CULVERT NO. 1	EXPANSION BOLTS 3/4 INCH	REINFORCEMENT BARS	CONCRETE COLLAR	GEOTECHNICAL FABRIC FOR GROUND STABILIZATION	* ROCK FILL	PRECAST CONCRETE BOX CULVERT (SPECIAL)	* REMOVAL AND DISPOSAL OF UNSUITABLE MATERIAL	POROUS GRANULAR EMBANKMENT
		EACH	EACH	POUND	CU YD	SQ YD	TON	FOOT	CU YD	TON
434+75.89	LT	1	8	20	0.5	16.7	22.2	20	11.1	16.9
TOTALS		1	8	20	0.5	17	23	20	12	17

* INCLUDES ESTIMATED QUANTITIES. THEY MAY BE REDUCED, INCREASED, OR DELETED BY THE ENGINEER BASED ON ACTUAL FIELD CONDITIONS. NO WORK INVOLVING THESE ESTIMATED QUANTITIES SHALL BE PERFORMED WITHOUT THE DIRECTION AND APPROVAL OF THE ENGINEER.

MODEL: D:\p\h\k\Klingner\13081\DOT - DIST 4 - PTB 2010\03\Work Order 08 - FY 2003\Shore Repair\18_Transportation\Location_A\CA00_Sheets\06-eh-Schedule 4.dgn
 FILE NAME: P:\Calebury\13081\DOT - DIST 4 - PTB 2010\03\Work Order 08 - FY 2003\Shore Repair\18_Transportation\Location_A\CA00_Sheets\06-eh-Schedule 4.dgn



USER NAME = aschafer	DESIGNED -	REVISED -
PLOT SCALE = 40,0000 * / in.	DRAWN -	REVISED -
PLOT DATE = 5/6/2024	CHECKED -	REVISED -
	DATE -	REVISED -

**STATE OF ILLINOIS
DEPARTMENT OF TRANSPORTATION**

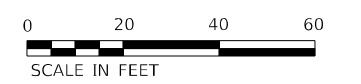
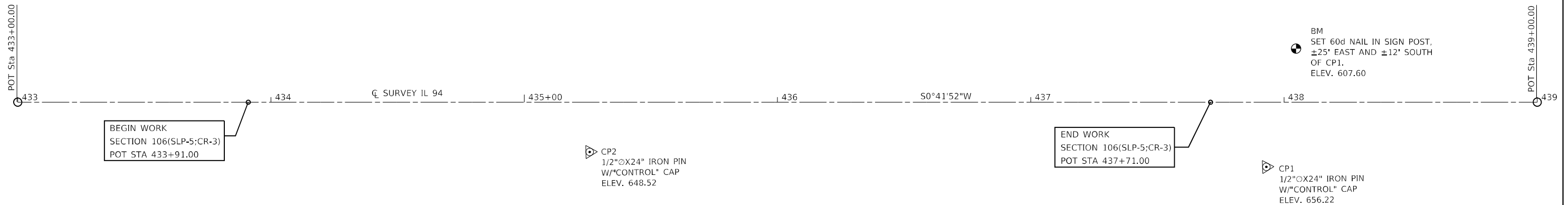
**F.A.S. ROUTE 1412 (IL 94)
SCHEDULE OF QUANTITIES**

SCALE: NONE SHEET 1 OF 1 SHEETS STA. TO STA.

F.A.S. RTE.	SECTION	COUNTY	TOTAL SHEETS	SHEET NO.
1412	106(SLP-S;CR-3)	HENDERSON	19	6
CONTRACT NO. 68H99				
ILLINOIS FED. AID PROJECT				

ALIGNMENT COORDINATES - IL 94			
	STATION	N	E
POT	433+00.00	1,573,555.1841	2,104,115.9809
POT	433+91.00	1,573,464.1909	2,104,114.8728
POT	437+71.00	1,573,084.2191	2,104,110.2455
POT	439+00.00	1,572,955.2286	2,104,108.6747

BENCHMARK AND CONTROL POINT COORDINATES					
	STATION	OFFSET	N	E	ELEVATIONS
CP1	437+93.03	25.51' RT	1,573,062.4973	2,104,084.4648	656.22
CP2	435+25.85	19.64' RT	1,573,329.5936	2,104,093.5966	648.52
BM	438+09.00	21.12' LT	1,573,050.1980	2,104,130.9500	607.60



MODEL: Default
FILE NAME: P:\Caledburg\2\filed\13081\DOT - DIST 4 - PTB 201-023\Work Order 08 - FY 2023 Slope Repair\18_Transportation\Location 4\ICADD_Sheets\007-Location 4_Alignment.dgn

KLINGNER & ASSOCIATES, P.C.
Engineers • Architects • Surveyors
616 N. 24TH ST. QUINCY, ILLINOIS 62301-2172, 233-3670
STATE OF ILLINOIS DESIGN FIRM NO. 184-2738

USER NAME = aschafer	DESIGNED -	REVISED -
PLOT SCALE = 40,0000 * / in.	DRAWN -	REVISED -
PLOT DATE = 4/8/2024	CHECKED -	REVISED -
	DATE -	REVISED -

**STATE OF ILLINOIS
DEPARTMENT OF TRANSPORTATION**

**F.A.S. ROUTE 1412 (IL 94)
ALIGNMENT SHEET**

SCALE: 1"=20' SHEET 1 OF 1 SHEETS STA. 433+00.00 TO STA. 439+00.00

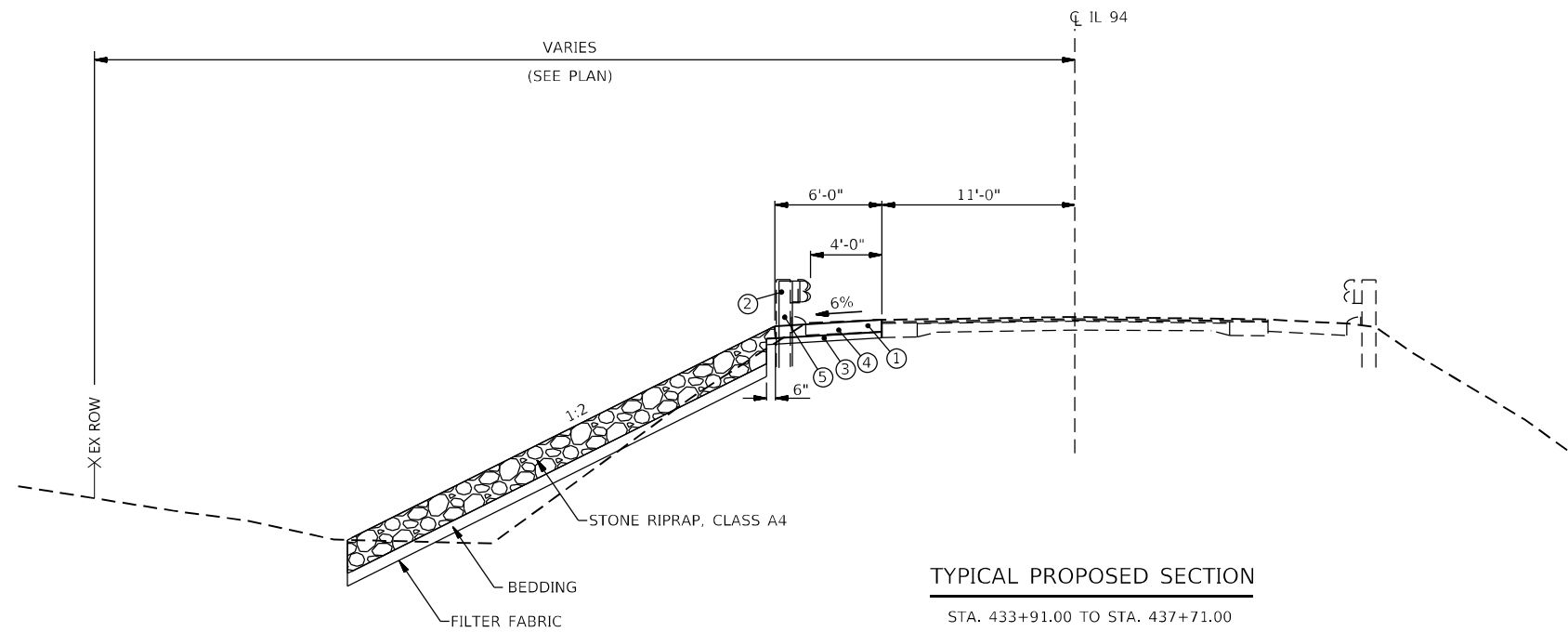
F.A.S. RTE.	SECTION	COUNTY	TOTAL SHEETS	SHEET NO.
1412	106(SLP-5;CR-3)	HENDERSON	19	7
CONTRACT NO. 68H99				
ILLINOIS FED. AID PROJECT				

LEGEND

- ① PAVED SHOULDER REMOVAL
(REMOVAL OF EXISTING EROSION CONTROL CURB INCLUDED)
- ② GUARDRAIL REMOVAL
- ③ PROPOSED SUBBASE GRANULAR MATERIAL, TYPE B
- ④ PROPOSED HOT-MIX ASPHALT SHOULDERS, 8"
- ⑤ PROPOSED STEEL PLATE BEAM GUARDRAIL, TYPE A, 9 FT POSTS
(PROPOSED GUARDRAIL TO BE DRIVEN THROUGH HMA SHOULDERS)

GUARDRAIL NOTES

PROPOSED GUARDRAIL
STA. 433+96.00 TO STA. 437+71.00 LT



MODEL: Default
 FILE NAME: P:\Caledonia\2116313081\DOT - DIST - 4 - PTB 201-033\Work Order 08 - FY 2023 Slope Repair\18_Transportation\Location_4\Location_4_Typical.dgn

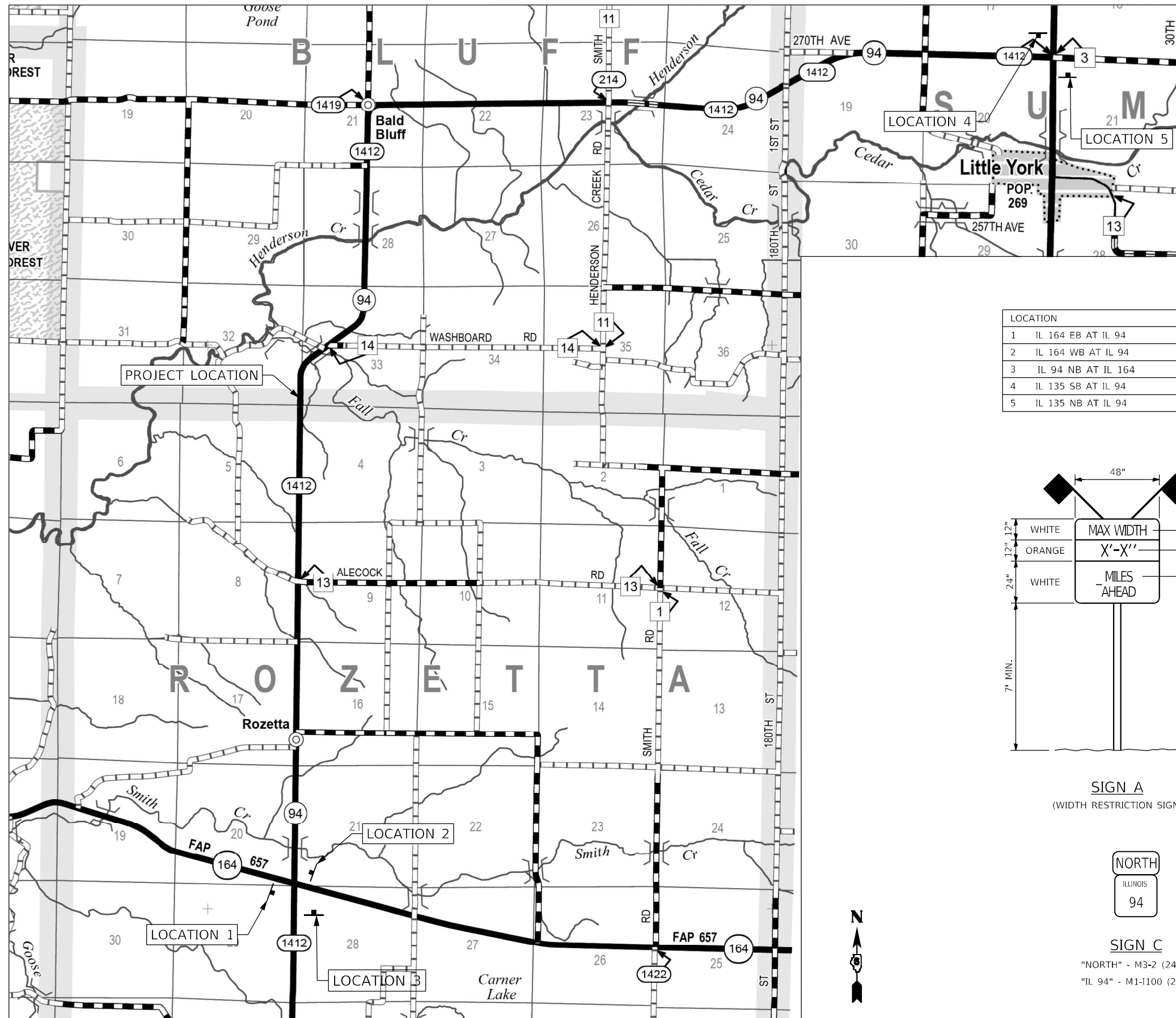


USER NAME = aschafer	DESIGNED -	REVISED -
PLOT SCALE = 20,0000 * / in.	DRAWN -	REVISED -
PLOT DATE = 5/6/2024	CHECKED -	REVISED -
	DATE -	REVISED -

**STATE OF ILLINOIS
DEPARTMENT OF TRANSPORTATION**

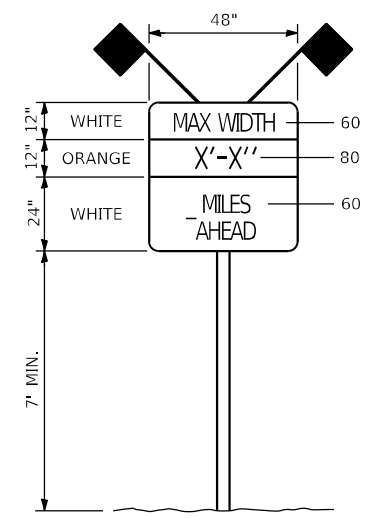
F.A.S. ROUTE 1412 (IL 94) TYPICAL SECTION			
SCALE: NONE	SHEET 1	OF 1 SHEETS	STA. TO STA.

F.A.S. RTE.	SECTION	COUNTY	TOTAL SHEETS	SHEET NO.
1412	106(SLP-S;CR-3)	HENDERSON	19	8
CONTRACT NO. 68H99				
ILLINOIS			FED. AID PROJECT	



GENERAL NOTES:
 ACTUAL MAXIMUM WIDTH ARE TO BE MEASURED BY THE ENGINEER AFTER TEMPORARY CONCRETE BARRIER WALL IS PLACED FOR STAGE 1.
 ALL SIGNS SHALL BE POST MOUNTED IN ACCORDANCE WITH ARTICLE 701.14 OF THE STANDARD SPECIFICATIONS FOR ROAD AND BRIDGE CONSTRUCTION.

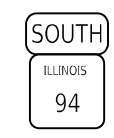
LOCATION	SIGN(S)	DISTANCE
1 IL 164 EB AT IL 94	A/C	4.2 MILES
2 IL 164 WB AT IL 94	A/C	4.2 MILES
3 IL 94 NB AT IL 164	A/C	4.2 MILES
4 IL 135 SB AT IL 94	A/D	8.2 MILES
5 IL 135 NB AT IL 94	A/D	8.2 MILES



SIGN A
 (WIDTH RESTRICTION SIGN)



SIGN C
 "NORTH" - M3-2 (2412)
 "IL 94" - M1-100 (2424)



SIGN D
 "SOUTH" - M3-4 (2412)
 "IL 94" - M1-100 (2424)



MODEL: Default
 FILE NAME: P:\Caledonia\211223\Work\08 - FY 2023 Slope Repair\18_Transportation\Location_ILCAD00_Sheets\009-Max Width_Signage.dgn
 6/16 N.24TH ST. QUINCY, ILLINOIS 62301 217.223.3670
 STATE OF ILLINOIS DESIGN FIRM NO. 184-2738

KLINGNER & ASSOCIATES, P.C.
 Engineers • Architects • Surveyors
 616 N.24TH ST. QUINCY, ILLINOIS 62301 217.223.3670
 STATE OF ILLINOIS DESIGN FIRM NO. 184-2738

USER NAME = aschafer	DESIGNED -	REVISED -
PLOT SCALE = 40,0000 * / in.	DRAWN -	REVISED -
PLOT DATE = 5/6/2024	CHECKED -	REVISED -
	DATE -	REVISED -

STATE OF ILLINOIS
 DEPARTMENT OF TRANSPORTATION

F.A.S. ROUTE 1412 (IL 94)
 MAXIMUM WIDTH SIGNING DETAIL
 SCALE: None SHEET 1 OF 1 SHEETS STA. N/A TO STA. N/A

F.A.S. RTE.	SECTION	COUNTY	TOTAL SHEETS	SHEET NO.
1412	106(SLP-S;CR-3)	HENDERSON	19	9
CONTRACT NO. 68H99				
ILLINOIS FED. AID PROJECT				

LEGEND	
	DIRECTION OF TRAFFIC
	TYPE III BARRICADE
	TEMPORARY CONCRETE BARRIER
	DRUM WITH BI-DIRECTIONAL STEADY BURNING LIGHT
	TEMPORARY TRAFFIC SIGNAL
	TEMPORARY IMPACT ATTENUATOR
	WORK ZONE
	BIDIRECTIONAL REFLECTORS

STAGE CONSTRUCTION SEQUENCE

THE FOLLOWING STAGE CONSTRUCTION SEQUENCE IS FOR INFORMATION ONLY. THE CONTRACTOR IS RESPONSIBLE FOR PLANNING AND EXECUTING THIS PROJECT WHICH SHALL BE SUBJECT TO THE APPROVAL OF THE ENGINEER.

STAGE 1:

- SET UP STAGE 1 TRAFFIC CONTROL.
- REMOVE EXISTING TREES.
- REMOVE EXISTING SHOULDER AND EXISTING GUARDRAIL.
- EXTEND EXISTING CULVERT.
- GRADE NORTHBOUND SLOPE OF IL 94 AND INSTALL RIPRAP.
- CONSTRUCT HOT-MIX ASPHALT SHOULDERS, 8" ALONG THE NORTHBOUND LANE.
- PLACE NEW STEEL PLATE BEAM GUARDRAIL, TYPE A, 9 FOOT POSTS.
- REMOVE STAGE 1 TRAFFIC CONTROL.

STAGE 2:

- UTILIZE TRAFFIC CONTROL AND PROTECTION, STANDARD 701201 TO COMPLETE PAVEMENT PATCHING.
- CONSTRUCT FINAL PAVEMENT MARKINGS. UTILIZE TRAFFIC CONTROL AND PROTECTION, STANDARD 701201.

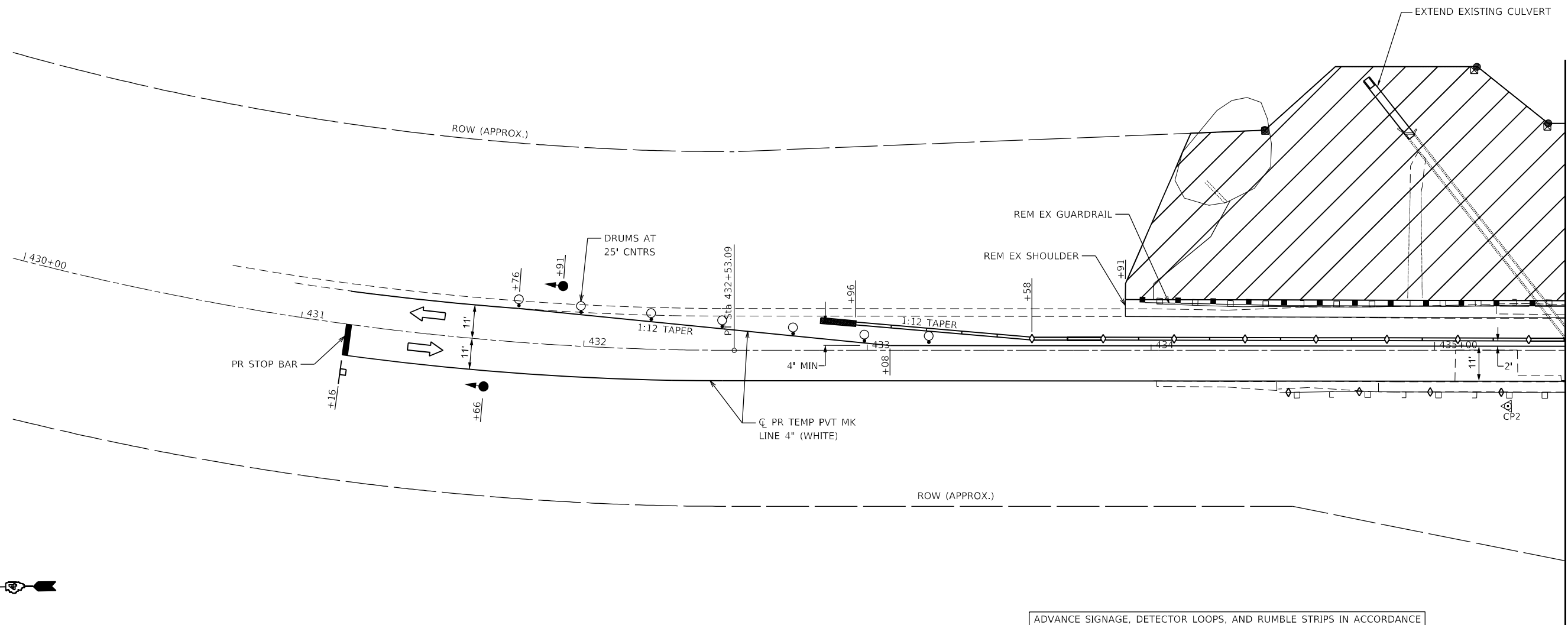
GENERAL NOTES

VERTICAL PANELS, DRUMS WITH STEADY BURNING LIGHTS, TYPE III BARRICADES, SIGNS, DETECTOR LOOPS, AND TYPE B BIDIRECTIONAL GUARDRAIL AND BARRIER REFLECTORS SHALL BE INCLUDED IN THE COST OF THE PAY ITEM "TRAFFIC CONTROL AND PROTECTION, STANDARD 701321 (SPECIAL)"

THIS WORK SHALL SUPPLEMENT AND BE IN ACCORDANCE WITH HIGHWAY STANDARD 701321.

THE CONTRACTOR SHALL PLACE MAX WIDTH SIGNS BEFORE IMPLEMENTING ANY STAGE TRAFFIC CONTROL.

REMOVE ALL CONFLICTING PAVEMENT MARKINGS, UTILIZING STANDARD 701201.



ADVANCE SIGNAGE, DETECTOR LOOPS, AND RUMBLE STRIPS IN ACCORDANCE WITH HIGHWAY STANDARD 701321.

MODEL: Default; FILE NAME: P:\Caledonia\2023\13081\DOT - DIST - 4 - PTB 201-023\Work Order 08 - FY 2023 Slope Repair\18_TrafficControlLocation_41CADD_Sheets\01_Location_4_TCP_Stage 1a.dgn

KLINGNER & ASSOCIATES, P.C.
 Engineers • Architects • Surveyors
 616 N. 24TH ST. QUINCY, ILLINOIS 62301-2172, 223-3670
 STATE OF ILLINOIS DESIGN FIRM NO. 184-2738

USER NAME = aschafer	DESIGNED -	REVISED -
PLOT SCALE = 40,0000 * / in.	DRAWN -	REVISED -
PLOT DATE = 5/6/2024	CHECKED -	REVISED -
	DATE -	REVISED -

**STATE OF ILLINOIS
DEPARTMENT OF TRANSPORTATION**

**F.A.S. ROUTE 142 (IL 94)
TRAFFIC CONTROL PLANS**

SCALE: 1"=20' SHEET 1 OF 2 SHEETS STA. 430+00.00 TO STA. 435+46.00

F.A.S. RTE.	SECTION	COUNTY	TOTAL SHEETS	SHEET NO.
1412	106(SLP-S;CR-3)	HENDERSON	19	10
CONTRACT NO. 68H99				
ILLINOIS FED. AID PROJECT				

STAGE CONSTRUCTION SEQUENCE

THE FOLLOWING STAGE CONSTRUCTION SEQUENCE IS FOR INFORMATION ONLY. THE CONTRACTOR IS RESPONSIBLE FOR PLANNING AND EXECUTING THIS PROJECT WHICH SHALL BE SUBJECT TO THE APPROVAL OF THE ENGINEER.

STAGE 1:

- SET UP STAGE 1 TRAFFIC CONTROL.
- REMOVE EXISTING TREES.
- REMOVE EXISTING SHOULDER AND EXISTING GUARDRAIL.
- EXTEND EXISTING CULVERT.
- GRADE NORTHBOUND SLOPE OF IL 94 AND INSTALL RIPRAP.
- CONSTRUCT HOT-MIX ASPHALT SHOULDERS, 8" ALONG THE NORTHBOUND LANE.
- PLACE NEW STEEL PLATE BEAM GUARDRAIL, TYPE A, 9 FOOT POSTS.
- REMOVE STAGE 1 TRAFFIC CONTROL.

STAGE 2:

- UTILIZE TRAFFIC CONTROL AND PROTECTION, STANDARD 701201 TO COMPLETE PAVEMENT PATCHING.
- CONSTRUCT FINAL PAVEMENT MARKINGS. UTILIZE TRAFFIC CONTROL AND PROTECTION, STANDARD 701201.

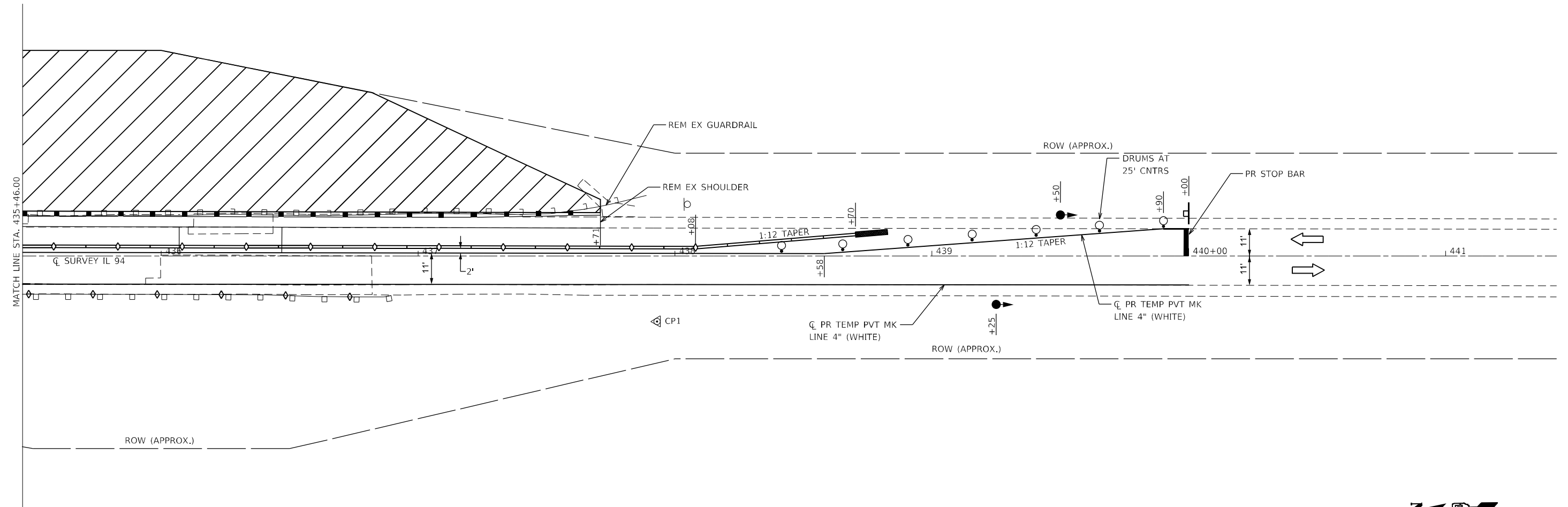
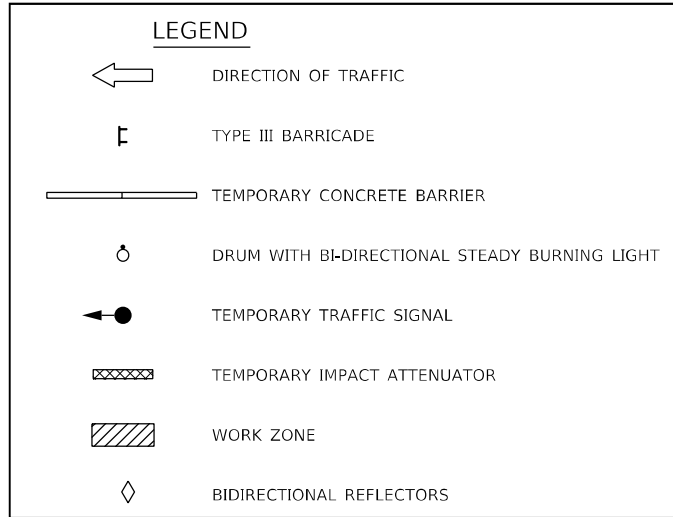
GENERAL NOTES

VERTICAL PANELS, DRUMS WITH STEADY BURNING LIGHTS, TYPE III BARRICADES, SIGNS, DETECTOR LOOPS, AND TYPE B BIDIRECTIONAL GUARDRAIL AND BARRIER REFLECTORS SHALL BE INCLUDED IN THE COST OF THE PAY ITEM "TRAFFIC CONTROL AND PROTECTION, STANDARD 701321 (SPECIAL)"

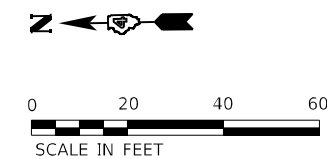
THIS WORK SHALL SUPPLEMENT AND BE IN ACCORDANCE WITH HIGHWAY STANDARD 701321.

THE CONTRACTOR SHALL PLACE MAX WIDTH SIGNS BEFORE IMPLEMENTING ANY STAGE TRAFFIC CONTROL.

REMOVE ALL CONFLICTING PAVEMENT MARKINGS, UTILIZING STANDARD 701201.



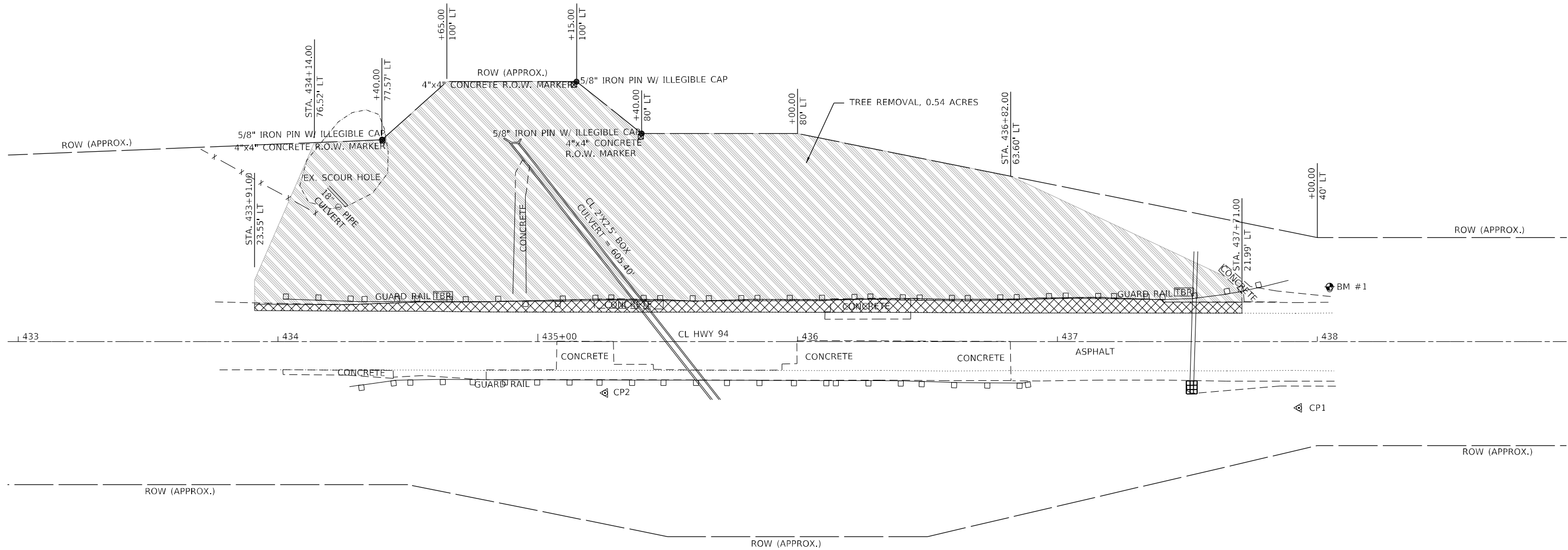
ADVANCE SIGNAGE, DETECTOR LOOPS, AND RUMBLE STRIPS IN ACCORDANCE WITH HIGHWAY STANDARD 701321.






MODEL: Defaul... FILE: NAME: P:\Caledonia\2\116313081\DOT - DIST - 4 - PTB 201-0321\Work Order 08 - FY 2023 Slope Repair\18_Transportation\Location_41CADD_Sheets\01_Location_4_TCP_Stage_1b.dgn

KLINGNER & ASSOCIATES, P.C. Engineers • Architects • Surveyors 616 N. 24TH ST. QUINCY, ILLINOIS 62301 217.223.3670 STATE OF ILLINOIS DESIGN FIRM NO. 184-2738	USER NAME = aschafer DESIGNED - DRAWN - CHECKED - DATE -	REVISED - REVISED - REVISED - REVISED -	STATE OF ILLINOIS DEPARTMENT OF TRANSPORTATION	F.A.S. ROUTE 142 (IL 94) TRAFFIC CONTROL PLANS	F.A.S. RTE. 1412 SECTION 106(SLP-S;CR-3) COUNTY HENDERSON TOTAL SHEETS 19 SHEET NO. 11	CONTRACT NO. 68H99 ILLINOIS FED. AID PROJECT
	PLOT SCALE = 40,0000 * / in. PLOT DATE = 5/6/2024	SCALE: 1"=20' SHEET 2 OF 2 SHEETS STA. 435+46.00 TO STA. 441+50.00				

MODEL: Default
 FILE NAME: P:\Caledonia\2116313081\DOT - DIST 4 - PTB 201-033\Work Order 08 - FY 2023 Slope Repair\18_Transportation\Location 4 Removal.dwg
 MODEL: Default
 FILE NAME: P:\Caledonia\2116313081\DOT - DIST 4 - PTB 201-033\Work Order 08 - FY 2023 Slope Repair\18_Transportation\Location 4 Removal.dwg



REMOVAL LEGEND

-  PAVED SHOULDER REMOVAL
-  TREE REMOVAL
-  TO BE REMOVED

NOTE:
 CONTRACTOR SHALL REMOVE THE EXISTING EROSION CONTROL CURBS
 WITHIN THE PROJECT LIMITS. COST INCLUDED IN "PAVED SHOULDER REMOVAL".



KLINGNER & ASSOCIATES, P.C.
 Engineers • Architects • Surveyors
 616 N. 24TH ST. QUINCY, ILLINOIS 62301-2172, 223-3670
 STATE OF ILLINOIS DESIGN FIRM NO. 184-2738

USER NAME = aschafer	DESIGNED -	REVISED -
PLOT SCALE = 40,0000 * / in.	DRAWN -	REVISED -
PLOT DATE = 4/8/2024	CHECKED -	REVISED -
	DATE -	REVISED -

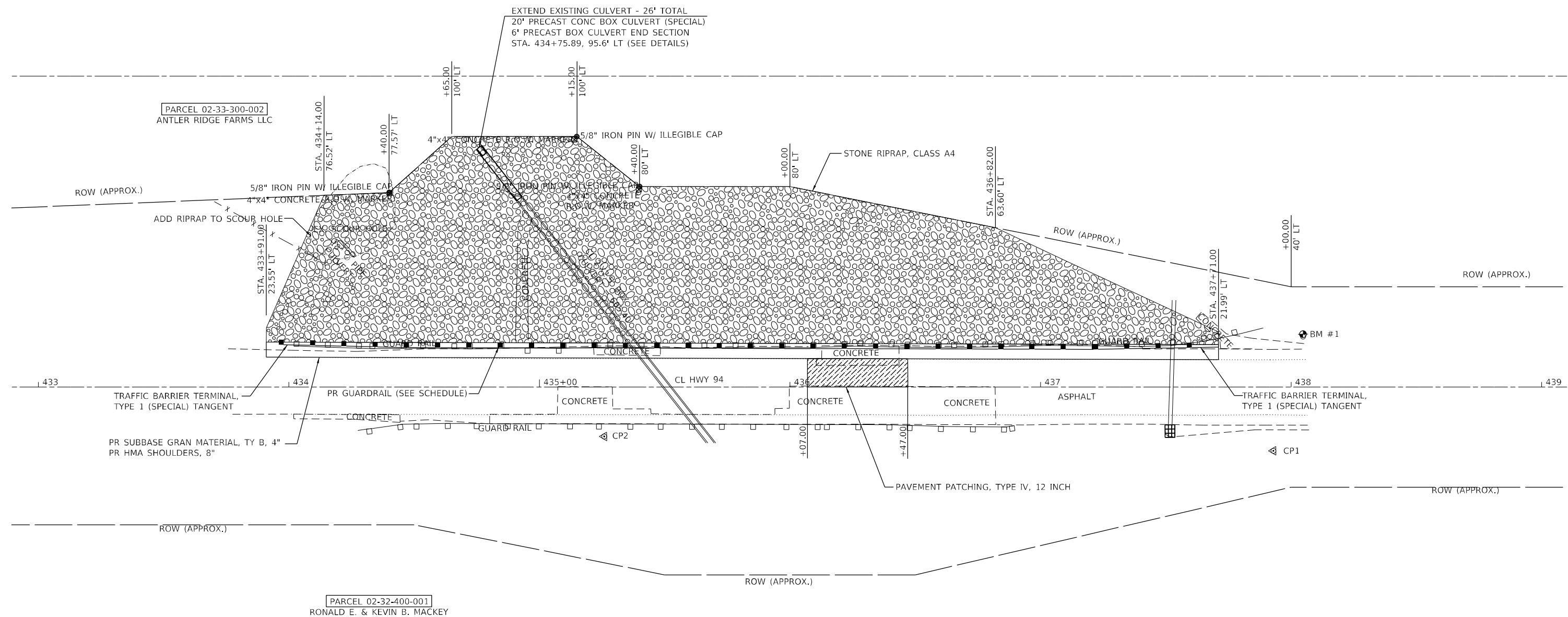
**STATE OF ILLINOIS
 DEPARTMENT OF TRANSPORTATION**

**F.A.S. ROUTE 142 (IL 94)
 REMOVAL PLAN**

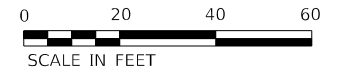
SCALE: 1"=20' SHEET 1 OF 1 SHEETS STA. 433+00.00 TO STA. 439+00.00

F.A.S. RTE.	SECTION	COUNTY	TOTAL SHEETS	SHEET NO.
1412	106(SLP-S;CR-3)	HENDERSON	19	12
CONTRACT NO. 68H99				
ILLINOIS FED. AID PROJECT				

MODEL: Default
 FILE NAME: P:\Caledonia\2116313081\DOT - DIST 4 - PTB 201-023\Work Order 08 - FY 2023 Slope Repair\18_Transportation\Location 41CADD_Sheets\013_Location 4_pln.dgn



BM #1
 SET 60d NAIL IN SIGN POST (N.T.S.)
 25FT± EAST AND 12FT± SOUTH OF CP 1
 ELEV = 607.60



KLINGNER & ASSOCIATES, P.C.
 Engineers • Architects • Surveyors
 616 N. 24TH ST. QUINCY, ILLINOIS 62301-2172, 223.3670
 STATE OF ILLINOIS DESIGN FIRM NO. 184-2738

USER NAME = aschaefer	DESIGNED -	REVISED -
PLOT SCALE = 40,0000 * / in.	DRAWN -	REVISED -
PLOT DATE = 4/8/2024	CHECKED -	REVISED -
	DATE -	REVISED -

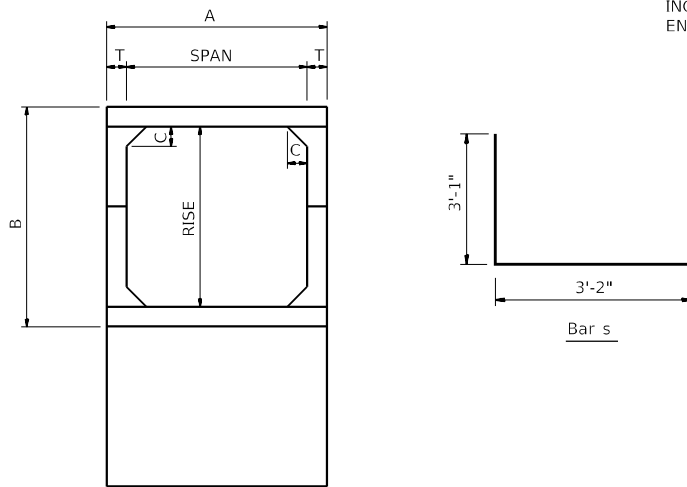
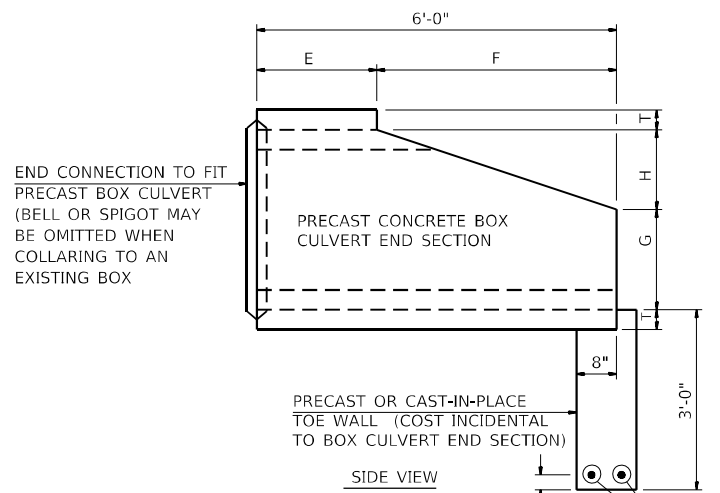
**STATE OF ILLINOIS
 DEPARTMENT OF TRANSPORTATION**

**F.A.S. ROUTE 1412 (IL 94)
 SITE PLAN**

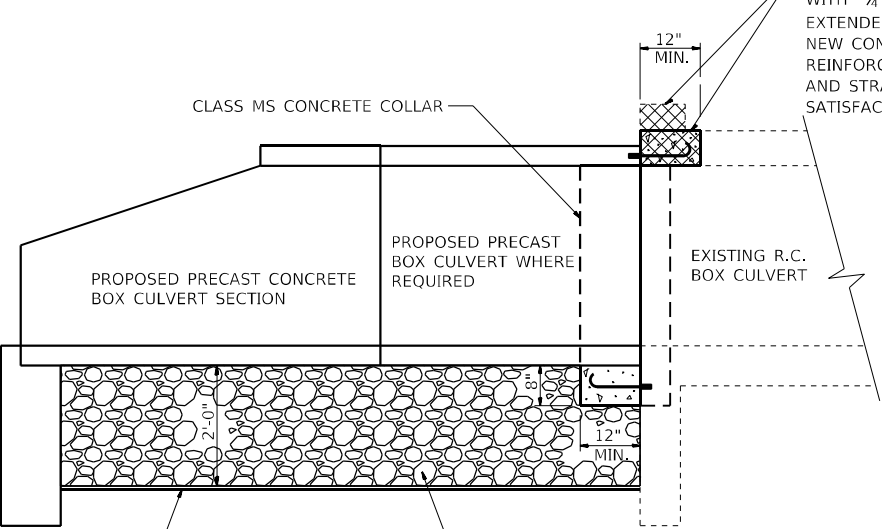
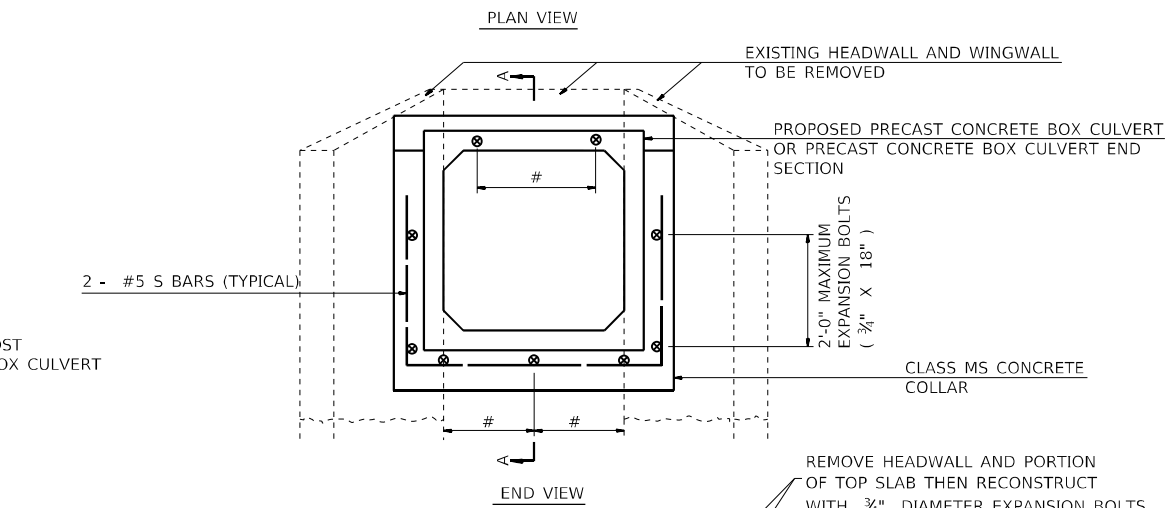
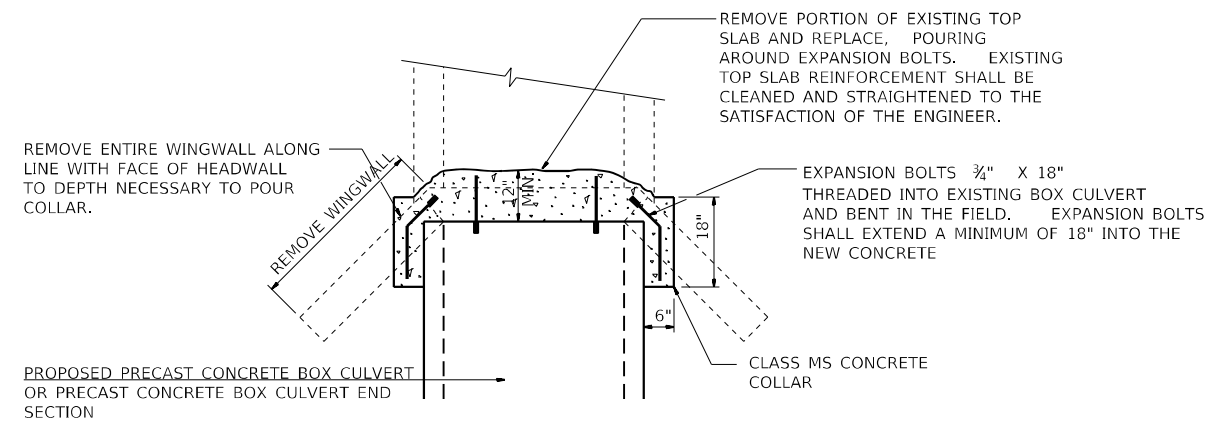
SCALE: 1"=20' SHEET 1 OF 1 SHEETS STA. 433+00.00 TO STA. 439+00.00

F.A.S. RTE.	SECTION	COUNTY	TOTAL SHEETS	SHEET NO.
1412	106(SLP-S;CR-3)	HENDERSON	19	13
CONTRACT NO. 68H99				
ILLINOIS FED. AID PROJECT				

NOTE:
EXPANSION BOLTS SHALL CONSIST OF SELF DRILLING EXPANSION SHIELDS AND 3/4" DIAMETER HOOKED BOLTS. HOOKED BOLTS SHALL EXTEND A MINIMUM DISTANCE AS SPECIFIED, 9" OR 18" INTO THE NEW CONCRETE. MINIMUM CERTIFIED PROOF LOAD = 4080 LBS.



Span x Rise	T	A	B	C	E	F	G	H
2' x 2.5'	4"	2'-8"	3'-2"	4"	2'-6"	3'-6"	1'-4"	1'-2"



NUMBER OF EXPANSION BOLTS AND SPACING

SPAN X RISE	TOP SLAB 3/4" X 9" *	BOTTOM SLAB 3/4" X 9" *	EACH WING 3/4" X 18" **
2.5' x 2.5'	2 at 18"	2 at 18"	2 at 18"

* THE DIMENSIONS SHOWN ARE THE MINIMUM EXTENSIONS OF THE EXPANSION BOLTS INTO THE NEW CONCRETE.

SCHEDULE OF ESTIMATED EARTHWORK QUANTITIES

STATION	SIZE	POROUS GRANULAR EMBANKMENT TON	GEOTECHNICAL FABRIC FOR GROUND STABILIZATION (S.Y.)	+ ROCK FILL TON
	(FT)			
434+75.89 LT	2' X 2.5'	17	17	23

* APPROXIMATELY 2'-0" DEEP

SCHEDULE OF ESTIMATED QUANTITIES

STATION	SIZE	CONCRETE COLLAR (C.Y.)	EXPANSION BOLTS (EA.)	REINFORCEMENT BARS (LBS)	PRECAST CONCRETE BOX CULVERT (SPECIAL) (FOOT)	BOX CULVERT END SECTIONS, CULVERT NO. 1 (EACH)
	(FT)					
434+75.89 LT	2' X 2.5'	0.5	8	20	20	1

NOTE:
REMOVAL OF EXISTING WINGWALLS, HEADWALLS, PORTIONS OF EXISTING TOP SLABS, ETC., SHALL NOT BE PAID FOR SEPARATELY, BUT SHALL BE CONSIDERED AS INCLUDED IN THE CONTRACT UNIT PRICE PER CUBIC YARD FOR CONCRETE COLLAR.

STRUCTURE EXCAVATION REQUIRED FOR THE REMOVAL OF EXISTING HEADWALLS, WINGWALLS, OR TOP SLABS SHALL BE INCLUDED IN THE COST OF BOX CULVERT END SECTION.

COST OF POROUS GRANULAR MATERIAL AND REMOVAL AND DISPOSAL OF UNSUITABLE MATERIAL SHALL BE PAID FOR SEPARATELY.

MODEL: Defaul... FILE NAME: P:\Caledburg\2\filed13081\DOT - DIST - 4 - PTB 201-023\Work Order 08 - FY 2023 Slope Repair\18_Transportation\Location_410000_Sheets\01-1-Concrete Collar_Detail.dgn



USER NAME = aschaefer	DESIGNED -	REVISED -
PLOT SCALE = 80,0000 */ in.	DRAWN -	REVISED -
PLOT DATE = 4/8/2024	CHECKED -	REVISED -
	DATE -	REVISED -

STATE OF ILLINOIS
DEPARTMENT OF TRANSPORTATION

F.A.S. ROUTE 1412 (IL 94)
BOX CULVERT EXTENSION DETAILS

SCALE: NONE SHEET 1 OF 1 SHEETS STA. TO STA.

F.A.S. RTE.	SECTION	COUNTY	TOTAL SHEETS	SHEET NO.
1412	106(SLP-S;CR-3)	HENDERSON	19	14
CONTRACT NO. 68H99				
ILLINOIS FED. AID PROJECT				

MODEL: Default
 FILE NAME: P:\cshdhrm\p1\linea2130811001 - DIST 4 - P18 20102311001.dwg - 08 - 11 2023 Slope Reparatls, Transportation Location A/CAD/ SHEETS/15 0194 section 4-A-5.dwg

ORIGINAL	SUBMITTED	BY	DATE
DATE	DATE		
BY	BY		
DATE	DATE		
BY	BY		
DATE	DATE		

FINAL	SUBMITTED	BY	DATE
DATE	DATE		
BY	BY		
DATE	DATE		
BY	BY		
DATE	DATE		

KLINGNER ASSOCIATES, P.C.
 ENGINEERS • ARCHITECTS • SURVEYORS
 STATE OF ILLINOIS DESIGN FIRM NO. 1842788
 618 MAIN ST. QUINCY, ILLINOIS 62450

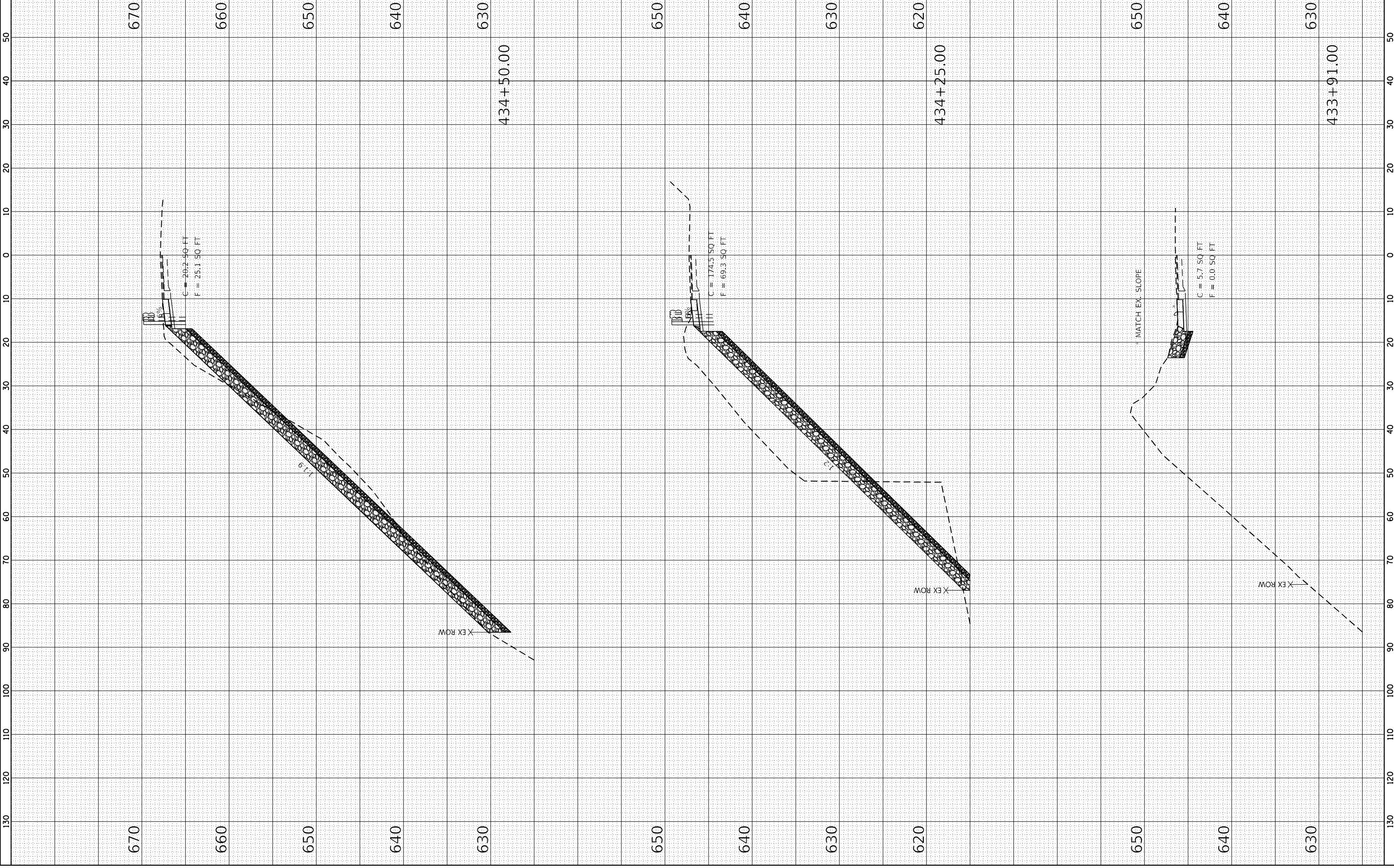
USER NAME = akshar
 DESIGNED -
 DRAWN -
 CHECKED -
 DATE -

REVISID -
 REVISID -
 REVISID -
 REVISID -

STATE OF ILLINOIS
DEPARTMENT OF TRANSPORTATION

SCALE: 1"=20'
 SHEET 1 OF 5 SHEETS
 STA. 433+91.00 TO STA. 434+50.00
F.A.S. ROUTE 1412 (IL 94)
CROSS SECTIONS

F.A.S. RTE. 1412
 SECTION 106(SLP-5;CR-3)
 HENDERSON 19
 CONTRACT NO. 68H99
 TOTAL SHEETS 15



ORIGINAL	SUBMITTED	BY	DATE
SURFER	PLOTTED		
NOTE BOOK	TEMPLATE		
AREAS CHECKED			
NO.			

FINAL	SUBMITTED	BY	DATE
SURFER	PLOTTED		
NOTE BOOK	TEMPLATE		
AREAS CHECKED			
NO.			

KLINGNER
ASSOCIATES, P.C.
 ENGINEERS • ARCHITECTS • SURVEYORS
 614 KENTWOOD DR. SUITE 200
 STATE OF ILLINOIS DESIGN FIRM NO. 1842728
 618 KENTWOOD DR. SUITE 200
 STATE OF ILLINOIS DESIGN FIRM NO. 112238270

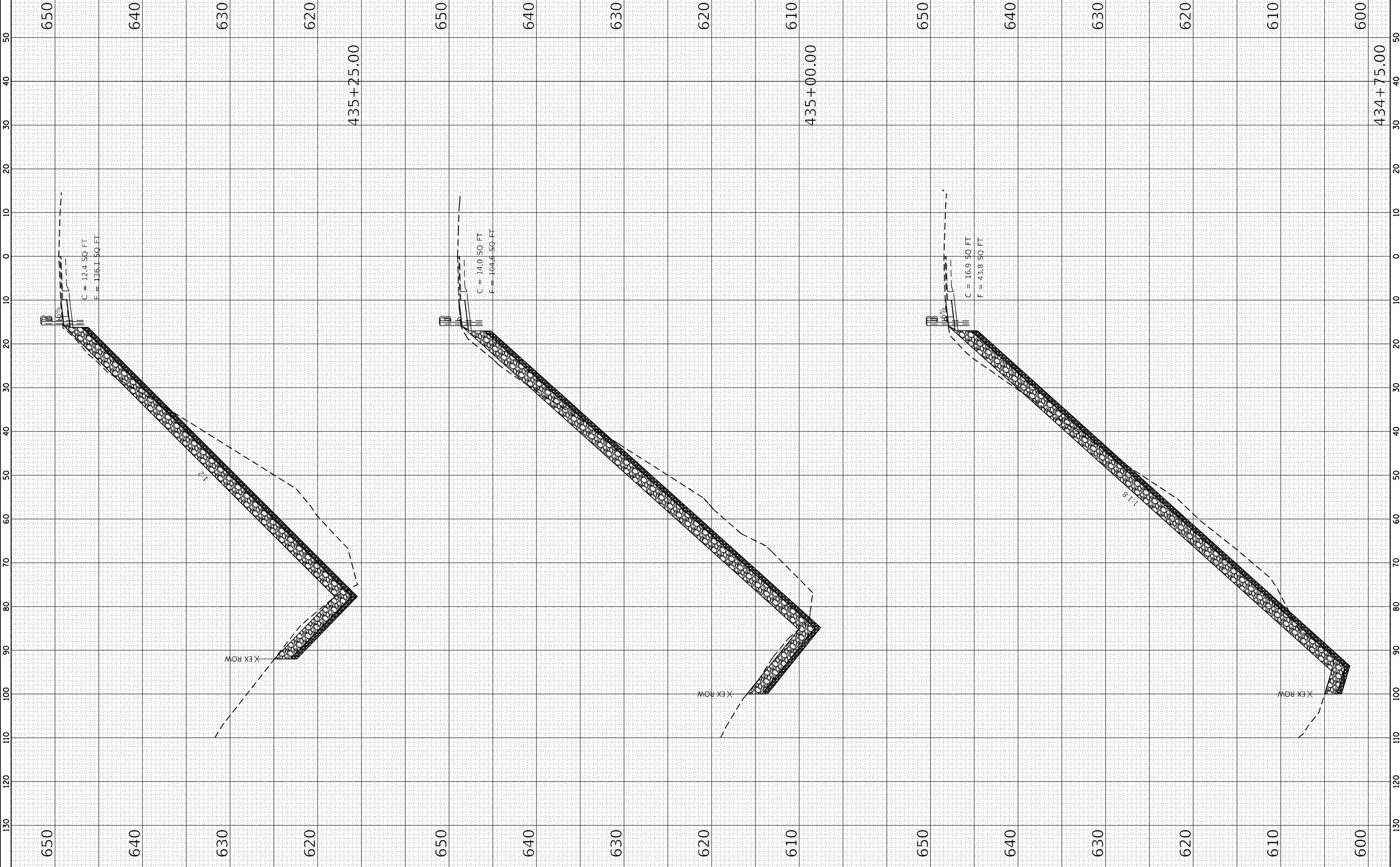
USER NAME = askhar
 DESIGNED -
 DRAWN -
 CHECKED -
 DATE -

REVISI
 REVISI
 REVISI
 REVISI
 REVISI

STATE OF ILLINOIS
 DEPARTMENT OF TRANSPORTATION

F.A.S. ROUTE 1412 (IL 94)
 CROSS SECTIONS
 SHEET 2 OF 5 SHEETS
 STA. 434+75.00 TO STA. 435+25.00
 SCALE: 1"=20'
 1"=10'H
 1"=20'

ILLINOIS FED. AID PROJECT
 CONTRACT NO. 68H99
 HENDERSON 19
 COUNTY SECTION
 106(SLP-5-CR-3)
 F.A.S. RTE. 1412
 TOTAL SHEETS 16



MODEL: Default
 FILE NAME: P:\Suburban\p1\lines13081\DOT - DIST - 4 - 1 - 18 - 20\DOT3\DOT3\DOT3\DOT3 - 11 - 2023\State Repairs\IS Transportation\Location\ACAD\Sheet\015_0194\section 14X5.dgn

ORIGINAL	SUBMITTED	BY	DATE
SURVEY	_____	_____	_____
NOTE BOOK	_____	_____	_____
AREAS CHECKED	_____	_____	_____

FINAL	SUBMITTED	BY	DATE
SURVEY	_____	_____	_____
NOTE BOOK	_____	_____	_____
AREAS CHECKED	_____	_____	_____

KLINGNER
 ASSOCIATES, P.C.
 ENGINEERS • ARCHITECTS • SURVEYORS
 STATE OF ILLINOIS DESIGN FIRM NO. 1842728
 616 MATTHEW ST. QUINCY, ILLINOIS 62450-1122

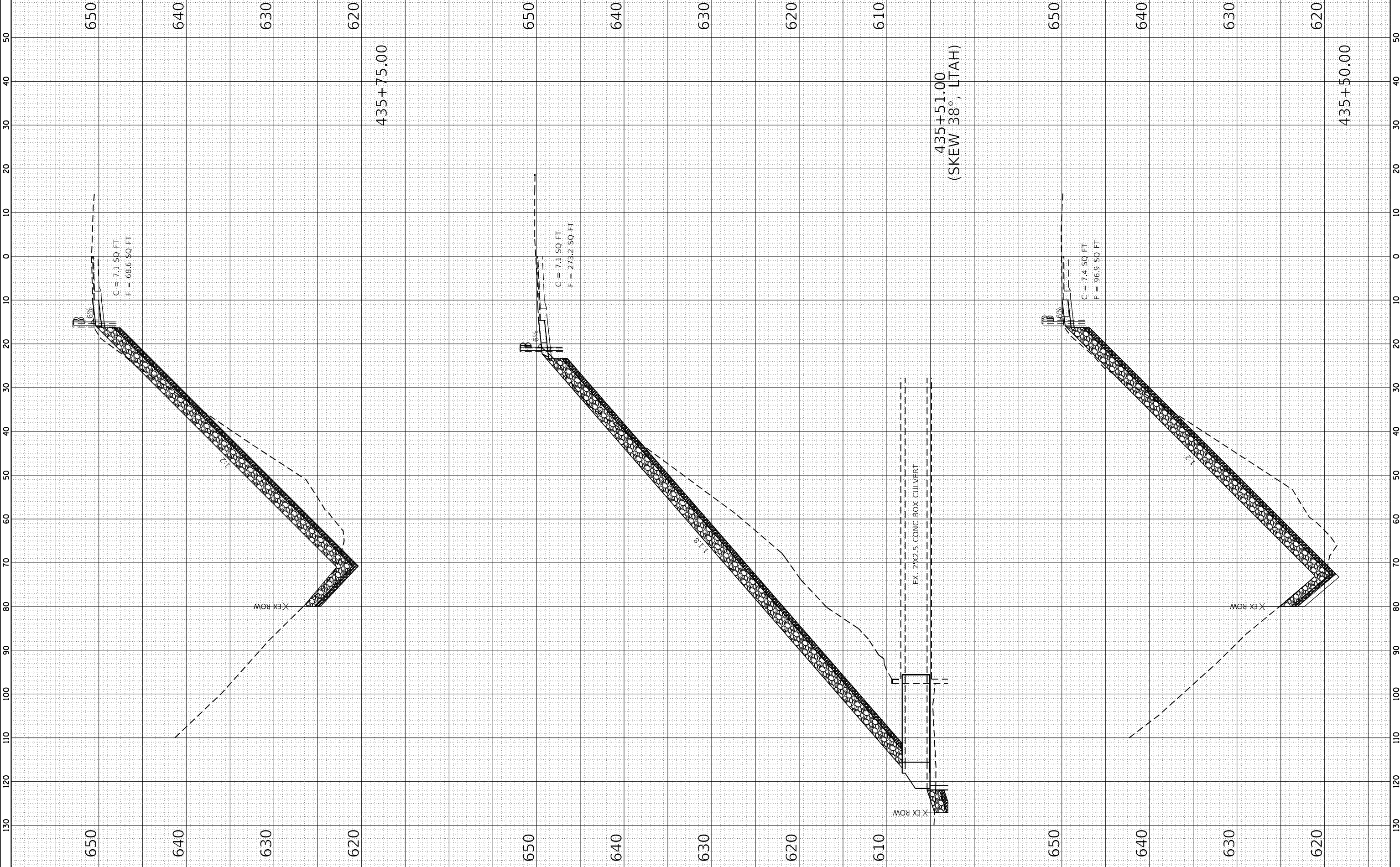
USER NAME = akshar
 DESIGNED -
 DRAWN -
 CHECKED -
 DATE -

REVISIONS
 REVISIONS -
 REVISIONS -
 REVISIONS -

STATE OF ILLINOIS
 DEPARTMENT OF TRANSPORTATION

SCALE: 1" = 20'
 SHEET 3 OF 5 SHEETS
 STA. 435+50.00 TO STA. 435+75.00
 F.A.S. ROUTE 1412 (IL 94)
 CROSS SECTIONS

F.A.S. RTE. 1412
 SECTION 106(SLP-5-CR-3)
 COUNTY HENDERSON
 CONTRACT NO. 68H99
 TOTAL SHEETS 19
 SHEETS 17



650 640 630 620 650 640 630 620 610 650 640 630 620 650 640 630 620

ORIGINAL	SUBMITTED	BY	DATE
SURVEY	PLOTTED		
NOTE BOOK	TEMPLATE		
AREAS CHECKED			

FINAL	SUBMITTED	BY	DATE
SURVEY	PLOTTED		
NOTE BOOK	TEMPLATE		
AREAS CHECKED			

KLINGNER
ASSOCIATES, P.C.
 ENGINEERS • ARCHITECTS • SURVEYORS
 STATE OF ILLINOIS DESIGN FIRM NO. 1842788
 618 MADISON ST. SUITE 200 CHICAGO, ILLINOIS 60605-1122

USER NAME = akshar
 DATE = 4/8/2024
 PLOT SCALE = 20,000 : 1 in.

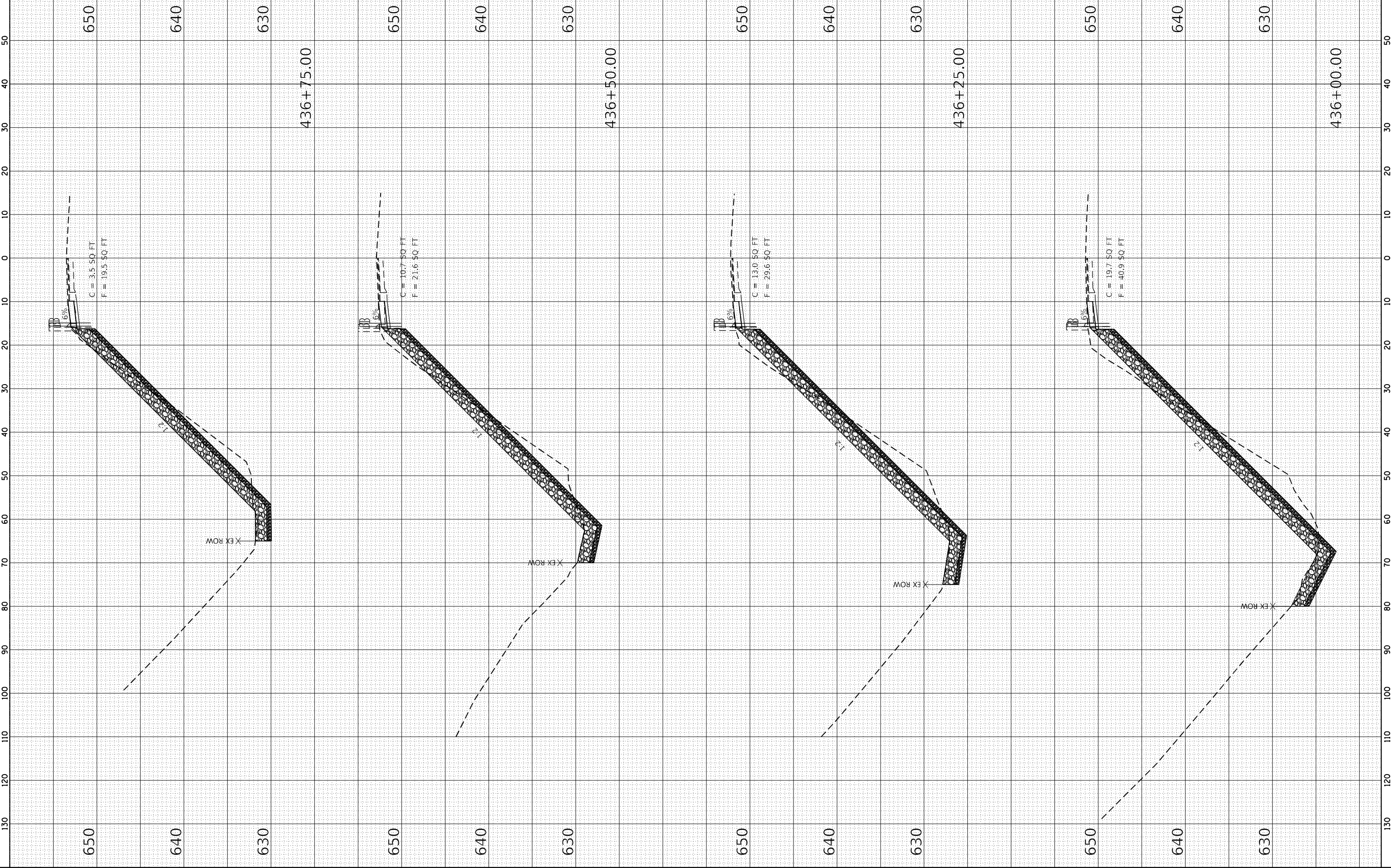
DESIGNED -
 DRAWN -
 CHECKED -
 REVISIONS -

STATE OF ILLINOIS
DEPARTMENT OF TRANSPORTATION

F.A.S. ROUTE 1412 (IL 94)
CROSS SECTIONS

F.A.S. RTE. 1412	SECTION	COUNTY	TOTAL SHEETS
106(SLP-5-(CR-3))			18
HENDERSON			19
CONTRACT NO. 68H99			

SCALE: 1" = 20'
 SHEET 4 OF 5 SHEETS
 STA. 436+00.00 TO STA. 436+75.00



ORIGINAL	SUBMITTED	BY	DATE
SURVEY	PLOTTED		
NOTE BOOK	TEMPLATE		
AREAS CHECKED			

FINAL	SUBMITTED	BY	DATE
SURVEY	PLOTTED		
NOTE BOOK	TEMPLATE		
AREAS CHECKED			

KLINGNER & ASSOCIATES, P.C.
 ENGINEERS • ARCHITECTS • SURVEYORS
 616 MATTHEW ST. QUINCY, ILLINOIS 62450
 STATE OF ILLINOIS DESIGN FIRM NO. 1842788

USER NAME = akshar
 DESIGNED -
 DRAWN -
 CHECKED -
 DATE -

REVISIED -
 REVISIED -
 REVISIED -

STATE OF ILLINOIS
DEPARTMENT OF TRANSPORTATION

SCALE: 1"=20'
 SHEET 5 OF 5 SHEETS
 STA. 437+00.00 TO STA. 437+71.00
F.A.S. ROUTE 1412 (IL 94)
CROSS SECTIONS

F.A.S. RTE. 1412
 SECTION 106(SLP-5-CR-3)
 COUNTY HENDERSON
 CONTRACT NO. 68H99
 TOTAL SHEETS 19

