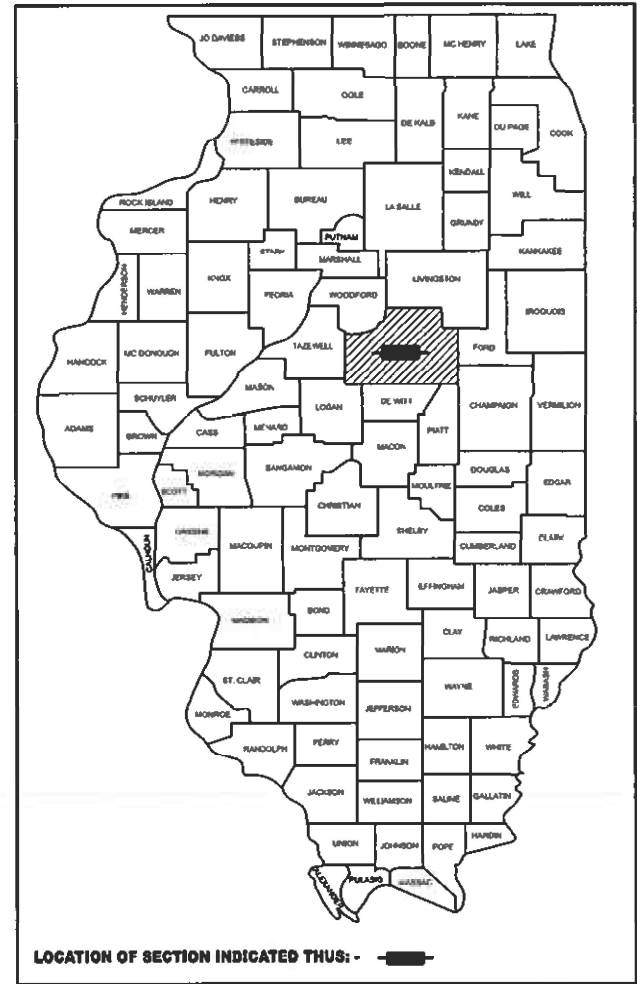


D-95-007-25



LOCATION OF SECTION INDICATED THUS: - [Symbol] -

FOR INDEX OF SHEETS, SEE SHEET NO. 2  
FOR SUMMARY OF QUANTITIES, SEE SHEET NO. 3-4

STATE OF ILLINOIS  
DEPARTMENT OF TRANSPORTATION

**PROPOSED  
HIGHWAY PLANS**

**FAI ROUTE 39 & 55 (I-39 & I-55)  
SECTION D5 CM PATCHING 2025-2  
PATCHING  
MCLEAN COUNTY**

**CURRENT TRAFFIC DATA**

**FAI 39 & FAI 55**

	LEG "A"	LEG "B"	LEG "C"	LEG "D"	LEG "E"	LEG "F"
2024 ADT	13,500	16,000	17,300	24,800	23,800	23,400
PU&PC%	54.5	59.8	62.7	68.5	67.9	66.9
SU%	4.8	3.3	3.2	3.7	3.9	4.0
MU%	40.7	36.9	34.1	27.8	28.2	29.1

**TRAFFIC DATA LOCATIONS**

- LEG "A" = I-39 FROM I-55 TO I-39SB TO I-55EB RAMP
- LEG "B" = I-39 FROM I-39SB TO I-55EB RAMP TO US 51 BUS.
- LEG "C" = I-39 FROM US 51 BUS. TO 0.5 MILES NORTH OF US 51 BUS.
- LEG "D" = I-55 FROM 1.3 MILES SOUTH OF TOWANDA TO FAU 6431 AT TOWANDA
- LEG "E" = I-55 FROM FAU 6431 AT TOWANDA TO FAS 473 AT LEXINGTON
- LEG "F" = I-55 FROM FAS 473 AT LEXINGTON TO 0.6 MILES S. OF 3000N RD

C-95-023-25  
I-55 TO 2000 NORTH RD N OF NORMAL; 1.3 MI S OF TOWANDA SCL TO 0.6 MI S OF 3000 NORTH RD

STATION EQUATION  
STA. 211+35.60 (BK) =  
STA. 210+60.05 (AH)

BEGIN STATION  
STA. 109+19.00

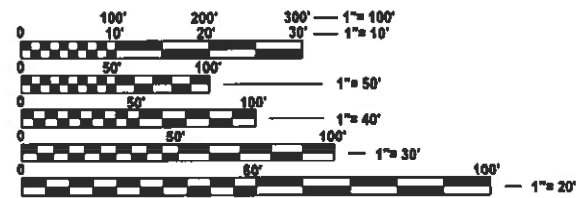
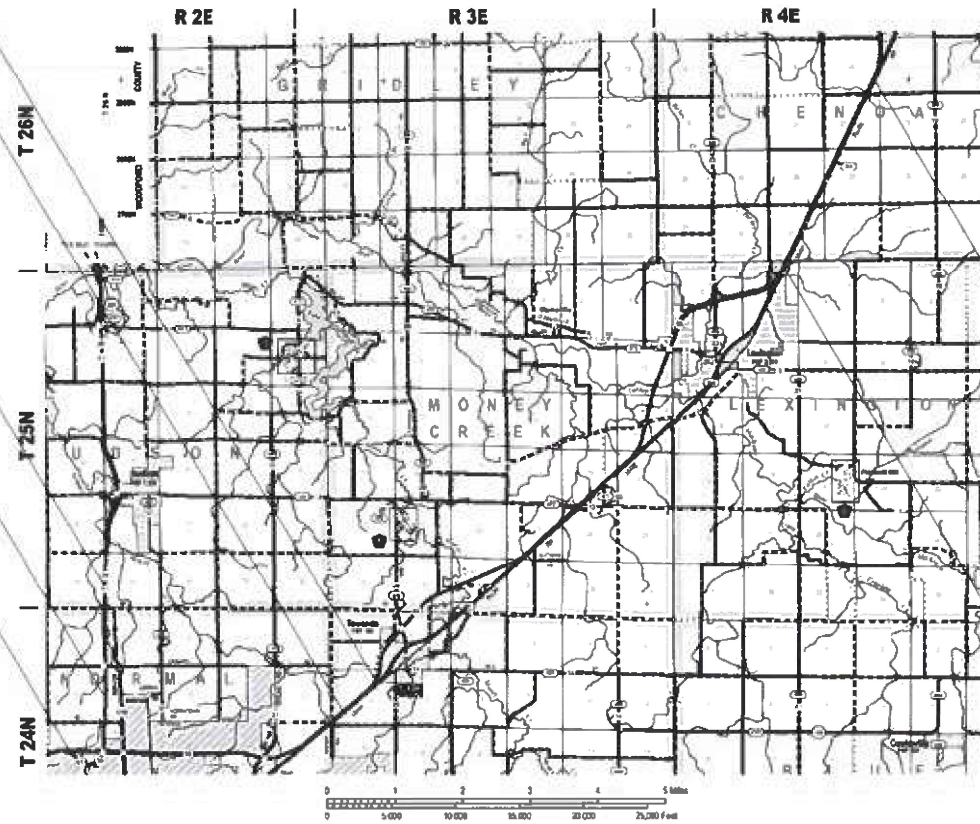
END STATION  
STA. 232+10.00

STATION EQUATION  
STA. 156+36.57 (BK) =  
STA. 156+23.97 (AH)

BEGIN STATION  
STA. 42+00.00

END STATION  
STA. 314+69.61

STATION EQUATION  
STA. 785+00.20 (BK) =  
STA. 100+00.00 (AH)



FULL SIZE PLANS HAVE BEEN PREPARED USING STANDARD ENGINEERING SCALES. REDUCED SIZED PLANS WILL NOT CONFORM TO STANDARD SCALES. IN MAKING MEASUREMENTS ON REDUCED PLANS, THE ABOVE SCALES MAY BE USED.

J.U.L.I.E.  
JOINT UTILITY LOCATION INFORMATION FOR EXCAVATION  
1-800-892-0123  
OR 811  
TOWNSHIP: CHENOA, LEXINGTON, NORMAL & TOWANDA

PROJECT ENGINEER: RYAN T. CARROLL  
SQUAD LEADER: CLARE B. DIETZ  
DESIGNER: JACKSON CHEN  
PHONE: (217) 465-4181  
CONTRACT NO. 70H38

GROSS LENGTH = 103490.00 FT. = 19.600 MILE  
NET LENGTH = 103490.00 FT. = 19.600 MILE

STATE OF ILLINOIS  
DEPARTMENT OF TRANSPORTATION

SUBMITTED 5/3 20 24  
*Kensil A. Barnett*  
REGIONAL ENGINEER

June 28, 2024 *[Signature]*  
ENGINEER OF DESIGN AND ENVIRONMENT

June 28, 2024 *[Signature]*  
DIRECTOR OF HIGHWAYS PROJECT IMPLEMENTATION

**PRINTED BY THE AUTHORITY  
OF THE STATE OF ILLINOIS**

**INDEX OF SHEETS**

SHEET NO.	DESCRIPTION
1	COVER SHEET
2	INDEX OF SHEETS
2	LIST OF HIGHWAY STANDARDS
2	GENERAL NOTES
3-4	SUMMARY OF QUANTITIES
5-10	EXISTING TYPICAL SECTIONS
11-13	SCHEDULE OF QUANTITIES
14-15	CLASS A PATCHES (SPECIAL)

**GENERAL NOTES**

G.N.-100A  
ELECTRONIC FILES AND/OR ELECTRONIC SURVEY INFORMATION INCLUDING CADD FILES WILL NOT BE AVAILABLE TO THE CONTRACTOR

G.N.-440B  
THE EXISTING TIE BARS BETWEEN THE EXISTING PAVEMENT AND EXISTING MEDIANS, GUTTERS AND/OR COMBINATION CURB AND GUTTERS THAT ARE FOUND SUITABLE FOR REUSE SHALL BE CLEANED, STRAIGHTENED AND INCORPORATED INTO THE NEW CONSTRUCTION. ANY EXISTING TIE BARS THAT ARE FOUND UNSUITABLE TO BE INCORPORATED INTO THE PROPOSED CONSTRUCTION DUE TO EXCESSIVE RUSTING OR DISTRESS SHALL BE REMOVED FLUSH WITH THE FACE OF THE EXISTING CONCRETE AND DISPOSED OF OUTSIDE THE LIMITS OF THE RIGHT-OF-WAY IN ACCORDANCE WITH ARTICLE 202.03 OF THE STANDARD SPECIFICATIONS.

THIS WORK WILL NOT BE PAID FOR SEPARATELY BUT SHALL BE CONSIDERED INCLUDED IN THE VARIOUS REMOVAL PAY ITEMS AND NO ADDITIONAL COMPENSATION WILL BE ALLOWED.

**HIGHWAY STANDARDS**

STANDARD NO.	DESCRIPTION
000001-08	STANDARD SYMBOLS, ABBREVIATIONS AND PATTERNS
001001-02	AREAS OF REINFORCEMENT BARS
001006	DECIMAL OF AN INCH AND OF A FOOT
420001-10	PAVEMENT JOINTS
420101-07	24' (7.2 M) JOINTED PCC PAVEMENT
420701-03	PAVEMENT WELDED WIRE REINFORCEMENT
442101-09	CLASS B PATCHES
701400-12	APPROACH TO LANE CLOSURE, FREEWAY/EXPRESSWAY
701401-13	LANE CLOSURE, FREEWAY/EXPRESSWAY
701411-09	LANE CLOSURE, MULTILANE, AT ENTRANCE OR EXIT RAMP, FOR SPEEDS ≥ 45 MPH
701446-11	TWO LANE CLOSURE, FREEWAY/EXPRESSWAY
701901-09	TRAFFIC CONTROL DEVICES

**NO COMMITMENTS**

MODEL: Index (Sheet)  
FILE NAME: c:\pwworkspace\illinois.gov\_jackson.chen@illinois.gov\092305\0570H38\_SHT\_DETAILS.dgn

USER NAME = jackson.chen	DESIGNED -	REVISED -
	DRAWN -	REVISED -
	CHECKED -	REVISED -
PLOT DATE = 5/ 3/ 20 24	DATE -	REVISED -

**STATE OF ILLINOIS  
DEPARTMENT OF TRANSPORTATION**

**INDEX OF SHEETS, GENERAL NOTES,  
LIST OF STANDARDS, AND COMMITMENTS**

SCALE: SHEET 1 OF 1 SHEETS STA. TO STA.

FAI RTE.	SECTION	COUNTY	TOTAL SHEETS	SHEET NO.
*	D5 CM PATCHING 20 25- 2	MCLEAN	15	2
			CONTRACT NO. 70H38	
		ILLINOIS	FED. AID PROJECT	

\* FAI 39 & 55

## SUMMARY OF QUANTITIES

LOCATION OF WORK:	AI 39 & 55 (I-39 & I-55)	AI 39 & 55 (I-39 & I-55)
	INTERSTATE	INTERSTATE
	URBAN	RURAL
	42+00.00 TO 232+10.00	279+78.00 TO 314+69.61
	109+19.00 TO 279+78.00	
FUNDING BREAKOUT:	MCLEAN	MCLEAN
CONSTRUCTION TYPE CODE:	100% STATE	100% STATE
	0006	0006

CODE NO.	ITEM	UNIT	TOTAL QUANTITY	ROADWAY QUANTITY	ROADWAY QUANTITY
44200050	WELDED WIRE REINFORCEMENT	SQ YD	143.00	143.00	
44200982	CLASS B PATCHES, TYPE II, 11 INCH	SQ YD	27.00	27.00	
44200986	CLASS B PATCHES, TYPE III, 11 INCH	SQ YD	36.00	36.00	
44200988	CLASS B PATCHES, TYPE IV, 11 INCH	SQ YD	107.00	107.00	
44201299	DOWEL BARS 1 1/2"	EACH	160.00	160.00	
44213000	PATCHING REINFORCEMENT	SQ YD	451.00	368.00	83.00
44213200	SAW CUTS	FOOT	2,247.00	1,881.00	366.00
44213204	TIE BARS 3/4"	EACH	504.00	338.00	166.00
67100100	MOBILIZATION	L SUM	1.00	0.90	0.10
70100420	TRAFFIC CONTROL AND PROTECTION, STANDARD 701411	EACH	6.00	6.00	
70100800	TRAFFIC CONTROL AND PROTECTION, STANDARD 701401	L SUM	1.00	0.90	0.10
70100815	TRAFFIC CONTROL AND PROTECTION, STANDARD 701446	L SUM	1.00	1.00	
70103815	TRAFFIC CONTROL SURVEILLANCE	CAL DA	1.00	1.00	
70107025	CHANGEABLE MESSAGE SIGN	CAL DA	12.00	6.00	6.00
* DENOTES SPECIALTY ITEM					

MODEL: SOQ (Sheet)  
FILE NAME: c:\p\work\pvt\illinois.gov\0902305\0570H38\_SHT\_DETAILS.dgn

USER NAME = jackson.chen	DESIGNED -	REVISED -
	DRAWN -	REVISED -
	CHECKED -	REVISED -
PLOT DATE = 5/3/2024	DATE -	REVISED -

**STATE OF ILLINOIS  
DEPARTMENT OF TRANSPORTATION**

**SUMMARY OF QUANTITIES**

SCALE: SHEET 1 OF 2 SHEETS STA. TO STA.

F.A.I RTE.	SECTION	COUNTY	TOTAL SHEETS	SHEET NO.
*	D5 CM PATCHING 2025-2	MCLEAN	15	3
CONTRACT NO. 70H38				
ILLINOIS FED. AID PROJECT				

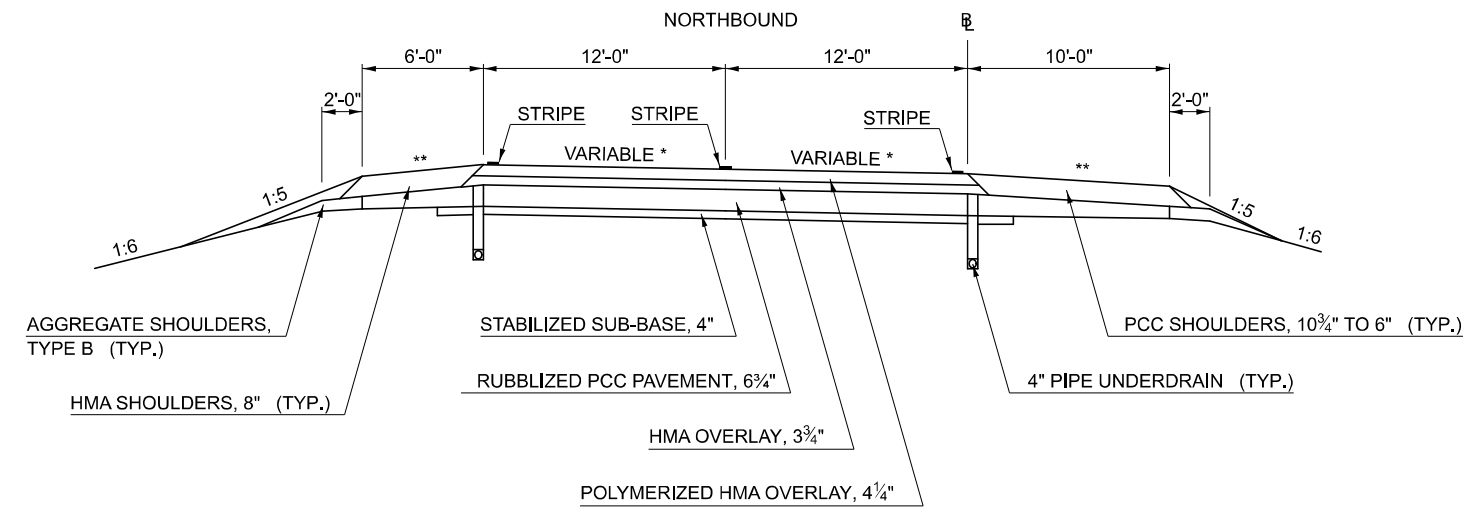
\* FAI 39 & 55



# EXISTING TYPICAL SECTION ①

F.A.I. 39

STATION 42+00.00 TO STATION 80+00.00 ②



- \* SLOPE VARIES FOR SUPERELEVATION IN CURVES
- \*\* SLOPE VARIES IN SUPERELEVATION WITH MAXIMUM OF 0.08 FT/FT DIFFERENCE

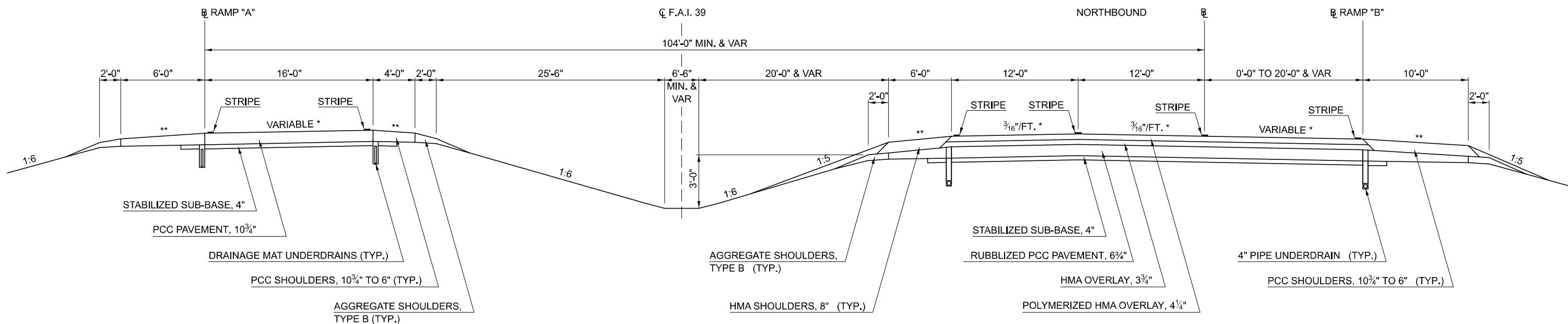
# EXISTING TYPICAL SECTION ②

F.A.I. 39

I-39 / I-55 INTERCHANGE: TYPICAL I-39 RAMPS AND I-39 MAINLINE WITH AUXILIARY LANE

STATION ① 80+00.00 TO STATION ③ 126+77.61

**STRUCTURE OMISSIONS**  
 STA 95+12.24 TO STA 99+85.95: S.N. 057-0215  
 STA 123+24.61 TO STA 126+77.61: S.N. 057-0217



- \* SLOPE VARIES FOR SUPERELEVATION IN CURVES
- \*\* SLOPE VARIES IN SUPERELEVATION WITH MAXIMUM OF 0.08 FT/FT DIFFERENCE

MODEL: Typical 1 (Sheet)  
 FILE NAME: c:\paw\work\illinois.gov\09092305\0570H38-Sht-Typical1.dgn

USER NAME = jackson.chen	DESIGNED -	REVISED -
	DRAWN -	REVISED -
	CHECKED -	REVISED -
PLOT DATE = 5/3/2024	DATE -	REVISED -

STATE OF ILLINOIS  
 DEPARTMENT OF TRANSPORTATION

EXISTING TYPICAL  
 CROSS SECTION

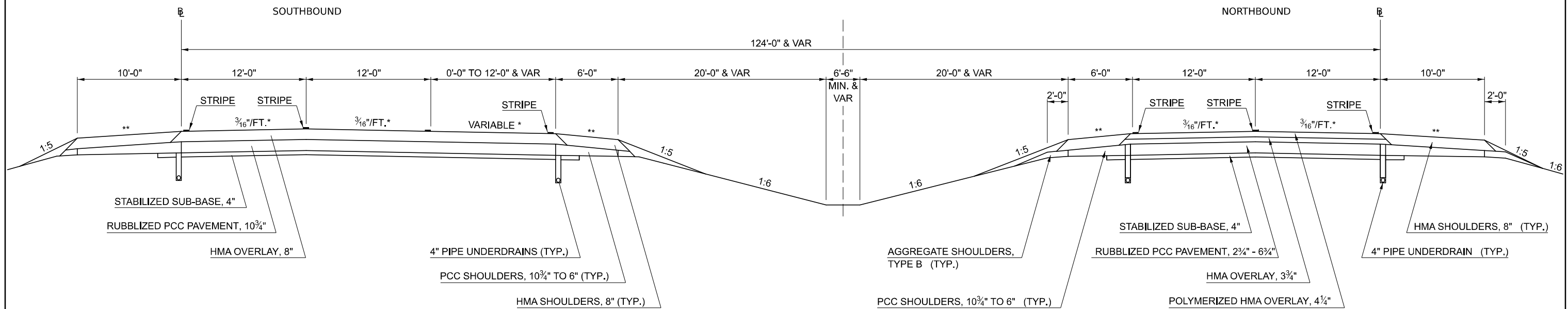
SCALE: SHEET 1 OF 6 SHEETS STA. TO STA.

F.A.I. RTE.	SECTION	COUNTY	TOTAL SHEETS	SHEET NO.
*	D5 CM PATCHING 2025-2	MCLEAN	15	5
CONTRACT NO. 70H38			ILLINOIS FED. AID PROJECT	

# EXISTING TYPICAL SECTION 3

F.A.I. 39

STATION ② 126+77.61 TO STATION ④ 144+28.27

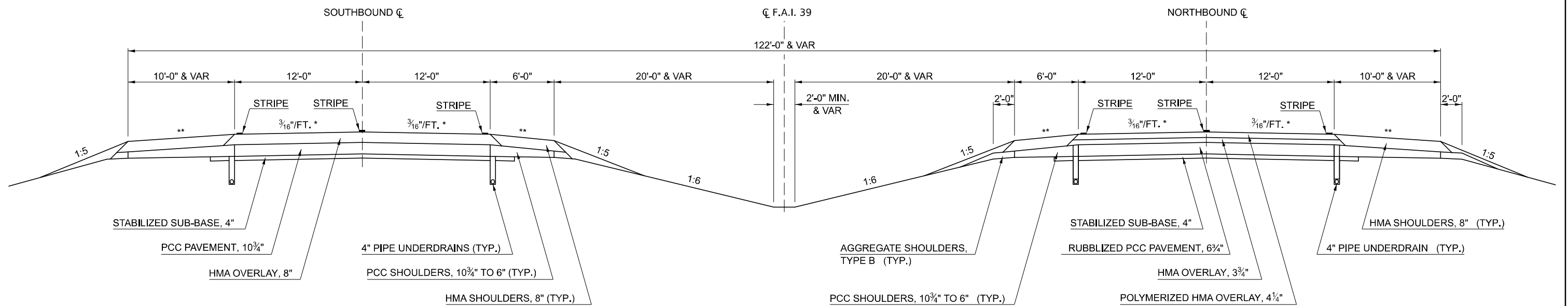


\* SLOPE VARIES FOR SUPERELEVATION IN CURVES  
 \*\* SLOPE VARIES IN SUPERELEVATION WITH MAXIMUM OF 0.08 FT/FT DIFFERENCE

# EXISTING TYPICAL SECTION 4

F.A.I. 39

STATION ③ 144+28.27 (AH) 156+23.97 TO STATION ⑤ 156+36.57 (BK) 234+91.00



\* SLOPE VARIES FOR SUPERELEVATION IN CURVES  
 \*\* SLOPE VARIES IN SUPERELEVATION WITH MAXIMUM OF 0.08 FT/FT DIFFERENCE

MODEL: Typical 2 (Sheet)  
 FILE NAME: c:\paw\work\70H38\typicals.dgn

USER NAME = jackson.chen	DESIGNED -	REVISED -
	DRAWN -	REVISED -
	CHECKED -	REVISED -
PLOT DATE = 5/3/2024	DATE -	REVISED -

STATE OF ILLINOIS  
 DEPARTMENT OF TRANSPORTATION

EXISTING TYPICAL  
 CROSS SECTION

SCALE: SHEET 2 OF 6 SHEETS STA. TO STA.

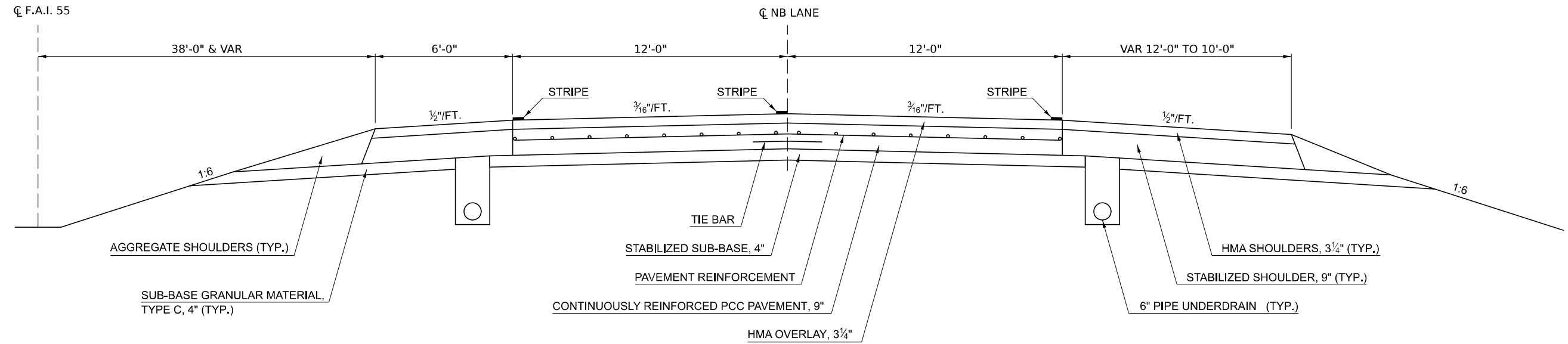
F.A.I. RTE.	SECTION	COUNTY	TOTAL SHEETS	SHEET NO.
*	D5 CM PATCHING 2025-2	MCLEAN	15	6
CONTRACT NO. 70H38				
ILLINOIS FED. AID PROJECT				

\* FAI 39 & 55

# EXISTING TYPICAL SECTION 5

F.A.I. 55 NORTHBOUND

STATION TO STATION  
114+64.00 TO 117+48.72 6

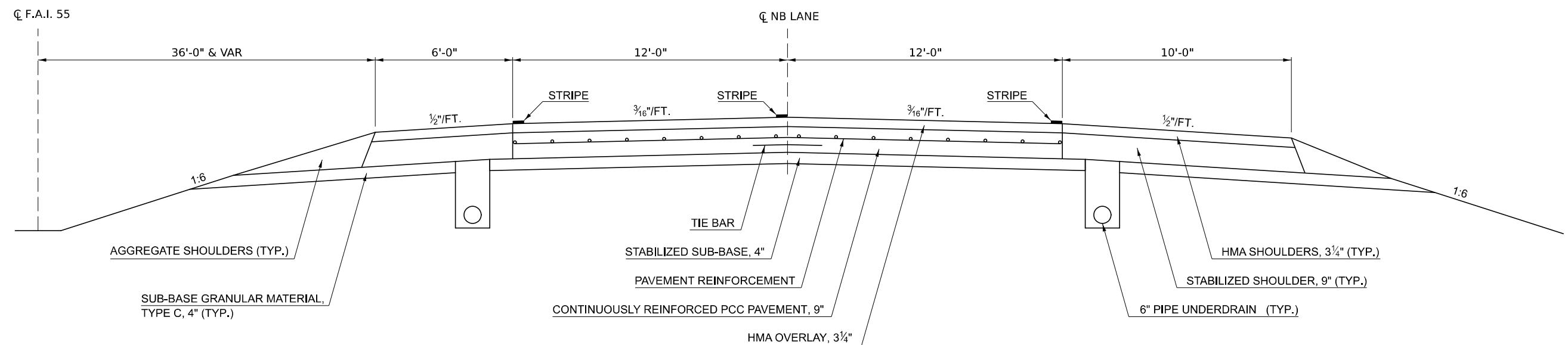


# EXISTING TYPICAL SECTION 6

F.A.I. 55 NORTHBOUND

STATION TO STATION  
117+48.72 TO 625+10.00 5

**STRUCTURE OMISSIONS**  
 STA 322+29.14 TO STA 324+20.42: S.N. 057-0164  
 STA 586+62.13 TO STA 590+12.86: S.N. 057-0167  
 STA 607+07.74 TO STA 609+99.07: S.N. 057-0170



MODEL: Typical 3 (Sheet)  
 FILE NAME: c:\p\work\70h38\illinois.gov\0902305\0570H38-Sht-Typicals.dgn

USER NAME = jackson.chen	DESIGNED -	REVISED -
	DRAWN -	REVISED -
	CHECKED -	REVISED -
PLOT DATE = 5/3/2024	DATE -	REVISED -

STATE OF ILLINOIS  
DEPARTMENT OF TRANSPORTATION

EXISTING TYPICAL  
CROSS SECTION

SCALE: SHEET 3 OF 6 SHEETS STA. TO STA.

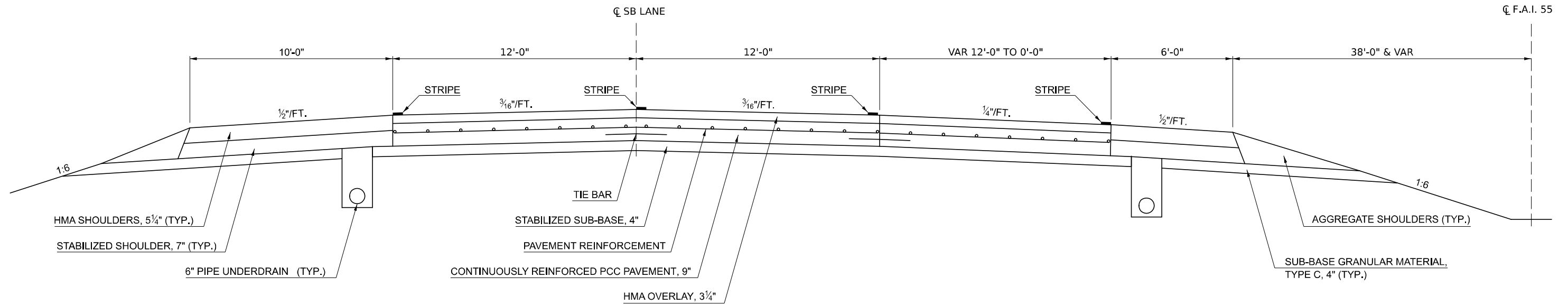
F.A.I. RTE.	SECTION	COUNTY	TOTAL SHEETS	SHEET NO.
*	D5 CM PATCHING 2025-2	MCLEAN	15	7
CONTRACT NO. 70H38				
ILLINOIS FED. AID PROJECT				

\* FAI 39 & 55

# EXISTING TYPICAL SECTION 7

F.A.I. 55 SOUTHBOUND

STATION 114+64.00 TO STATION 126+60.28 ⑧

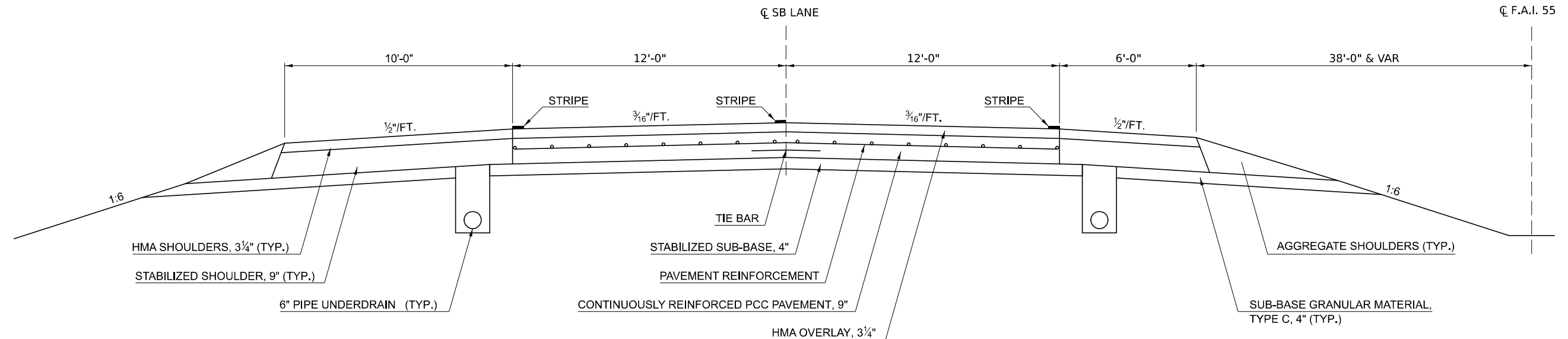


# EXISTING TYPICAL SECTION 8

F.A.I. 55 SOUTHBOUND

STATION ⑦ 126+60.28 TO STATION 620+37.00

**STRUCTURE OMISSIONS**  
 STA 321+69.58 TO STA 323+60.86: S.N. 057-0163  
 STA 586+62.13 TO STA 590+12.86: S.N. 057-0168  
 STA 607+71.74 TO STA 609+99.07: S.N. 057-0169



MODEL: Typical 4 (Sheet)  
 FILE NAME: c:\p\work\70h38\illinois.gov\0902305\0570H38-Str-Typicals.dgn

USER NAME = jackson.chen	DESIGNED -	REVISED -
	DRAWN -	REVISED -
	CHECKED -	REVISED -
PLOT DATE = 5/3/2024	DATE -	REVISED -

STATE OF ILLINOIS  
 DEPARTMENT OF TRANSPORTATION

EXISTING TYPICAL  
 CROSS SECTION

SCALE: SHEET 4 OF 6 SHEETS STA. TO STA.

F.A.I. RTE.	SECTION	COUNTY	TOTAL SHEETS	SHEET NO.
*	D5 CM PATCHING 2025-2	MCLEAN	15	8
CONTRACT NO. 70H38				
ILLINOIS FED. AID PROJECT				

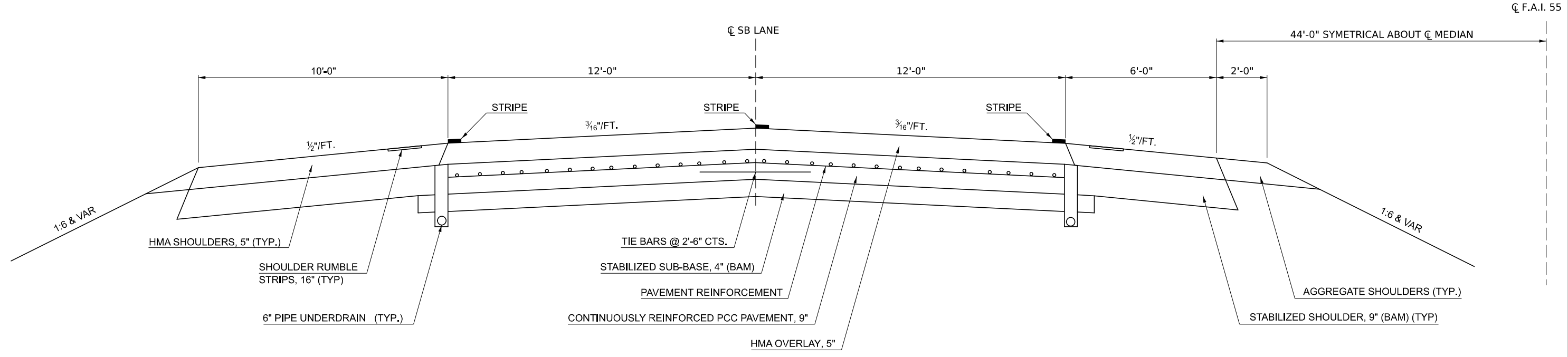
\* FAI 39 & 55



# EXISTING TYPICAL SECTION 9

## F.A.I. 55 SOUTHBOUND

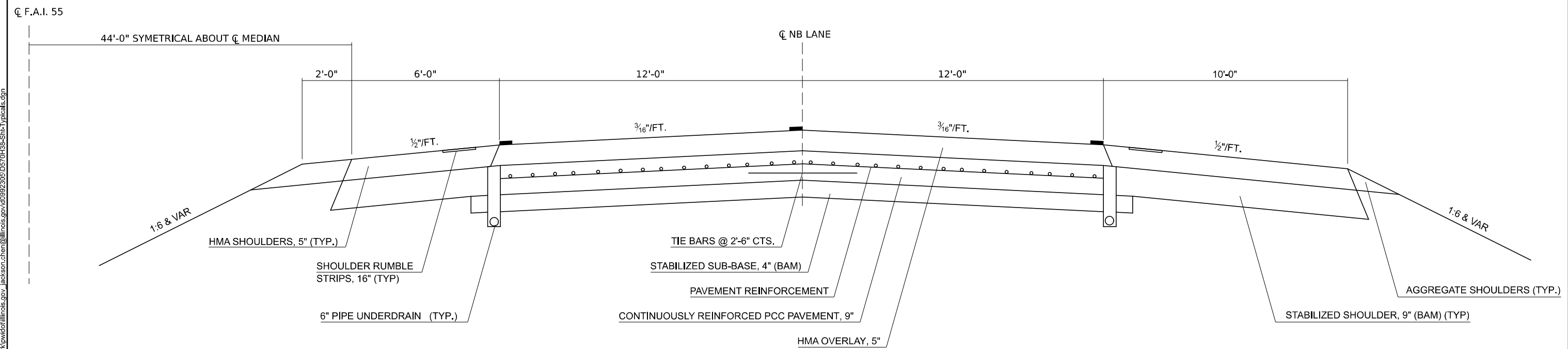
STATION TO STATION  
 620+40.25 TO 785+00.20 (BK)  
 (AH) 100+00.00 461+48.01



# EXISTING TYPICAL SECTION 10

## F.A.I. 55 NORTHBOUND

STATION TO STATION  
 625+26.36 TO 785+00.20 (BK)  
 (AH) 100+00.00 461+88.25



MODEL: Typical 5 (Sheet)  
 FILE NAME: c:\p\work\avt\illinois.gov\0902306\057\0H38-5H1-Typicals.dgn

USER NAME = jackson.chen	DESIGNED -	REVISED -
	DRAWN -	REVISED -
	CHECKED -	REVISED -
PLOT DATE = 5/3/2024	DATE -	REVISED -

STATE OF ILLINOIS  
 DEPARTMENT OF TRANSPORTATION

EXISTING TYPICAL  
 CROSS SECTION

SCALE: SHEET 5 OF 6 SHEETS STA. TO STA.

F.A.I. RTE.	SECTION	COUNTY	TOTAL SHEETS	SHEET NO.
*	D5 CM PATCHING 2025-2	MCLEAN	15	9
CONTRACT NO. 70H38				
ILLINOIS FED. AID PROJECT				

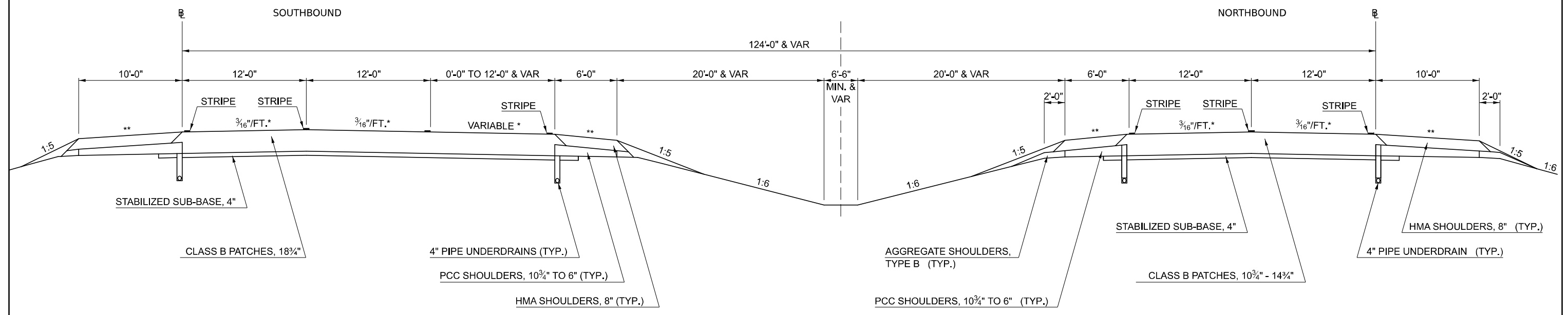
\* FAI 39 & 55

# EXISTING TYPICAL SECTION

11

F.A.I. 39

STATION TO STATION  
120+78.61 TO 129+23.61



\* SLOPE VARIES FOR SUPERELEVATION IN CURVES  
\*\* SLOPE VARIES IN SUPERELEVATION WITH MAXIMUM OF 0.08 FT/FT DIFFERENCE

MODEL: Typical-7 [Sheet]  
FILE NAME: c:\pwworking\illinois.gov\jackson.chen\illinois.gov\0592305\05\0570188-Sht-Typicals.dgn

USER NAME = jackson.chen DESIGNED - DRAWN - CHECKED - PLOT DATE = 5/3/2024	DESIGNED - DRAWN - CHECKED - DATE -	REVISED - REVISED - REVISED - REVISED -	<b>STATE OF ILLINOIS DEPARTMENT OF TRANSPORTATION</b>	<b>EXISTING TYPICAL CROSS SECTION</b>			F.A.I. RTE.	SECTION	COUNTY	TOTAL SHEETS	SHEET NO.
				*	D5 CM PATCHING 2025-2	MCLEAN	15	10			
				SCALE:	SHEET 6	OF 6	SHEETS	STA.	TO STA.	ILLINOIS FED. AID PROJECT	

**SCHEDULE OF QUANTITIES**

DESCRIPTION	X4420553 CLASS A PATCHES TYPE II, 10" (SPECIAL) (SQ YD)	X4420573 CLASS A PATCHES TYPE I, 12" (SPECIAL) (SQ YD)	X4420575 CLASS A PATCHES TYPE II, 12" (SPECIAL) (SQ YD)	X4420577 CLASS A PATCHES TYPE III, 12" (SPECIAL) (SQ YD)	X4420579 CLASS A PATCHES TYPE IV, 12" (SPECIAL) (SQ YD)	44200982 CLASS B PATCHES TYPE II, 11" (SPECIAL) (SQ YD)	44200986 CLASS B PATCHES TYPE III, 11" (SPECIAL) (SQ YD)	44200988 CLASS B PATCHES TYPE IV, 11" (SPECIAL) (SQ YD)
I-55 CLASS A PATCHES (SPECIAL) URBAN SUBTOTAL	0.0	12.0	25.0	16.7	313.3	0.0	0.0	0.0
I-55 CLASS A PATCHES (SPECIAL) RURAL SUBTOTAL	0.0	20.0	32.0	16.7	0.0	0.0	0.0	0.0
I-39 CLASS A PATCHES (SPECIAL) RURAL SUBTOTAL	13.3	0.0	0.0	0.0	0.0	0.0	0.0	0.0
I-39 CLASS B URBAN SUBTOTAL	0.0	0.0	0.0	0.0	0.0	26.7	36.0	106.7
URBAN SUBTOTAL	0.0	12.0	25.0	17.0	314.0	27.0	36.0	107.0
RURAL SUBTOTAL	14.0	20.0	32.0	17.0	0.0	0.0	0.0	0.0
TOTAL	14.0	32.0	57.0	34.0	314.0	27.0	36.0	107.0

DESCRIPTION	44201299 DOWEL BARS 1 1/2" (EACH)	44213200 SAW CUTS (FT)	44213204 TIE BARS, 3/4" (TRANSVERSE) (LONGITUDINAL) (EACH) (EACH)		44213000 PATCHING REINFORCEMENT (SQ YD)	44200050 WELDED WIRE REINFORCEMENT (SQ YD)
	I-55 CLASS A PATCHES (SPECIAL) URBAN SUBTOTAL	0.0	1248.0	120.0	164.0	368.0
I-55 CLASS A PATCHES (SPECIAL) RURAL SUBTOTAL	0.0	322.0	136.0	8.0	68.7	0.0
I-39 CLASS A PATCHES (SPECIAL) RURAL SUBTOTAL	0.0	44.0	22.0	0.0	13.3	0.0
I-39 CLASS B URBAN SUBTOTAL	160.0	633.0	0.0	54.0	0.0	142.7
URBAN SUBTOTAL	160.0	1881.0	120.0	218.0	368.0	143.0
RURAL SUBTOTAL	0.0	366.0	158.0	8.0	83.0	0.0
TOTAL	160.0	2247.0	278.0	226.0	451.0	143.0

MODEL: Schedule-4 (Sheet)  
FILE NAME: c:\p\work\view\illinois.gov\_jackson.chen@illinois.gov\0902305\0570H38\_SHT\_DETAILS.dgn

USER NAME = jackson.chen	DESIGNED -	REVISED -
	DRAWN -	REVISED -
	CHECKED -	REVISED -
PLOT DATE = 5/13/2024	DATE -	REVISED -

**STATE OF ILLINOIS  
DEPARTMENT OF TRANSPORTATION**

**SCHEDULE OF QUANTITIES**

SCALE: SHEET 1 OF 3 SHEETS STA. TO STA.

F.A.I RTE.	SECTION	COUNTY	TOTAL SHEETS	SHEET NO.
*	D5 CM PATCHING 2025-2	MCLEAN	15	11
CONTRACT NO. 70H38				
ILLINOIS FED. AID PROJECT				

**SCHEDULE OF QUANTITIES**

STATION	DIRECTION	LANE	TYPICAL	URBAN OR RURAL	LENGTH (FT)	WIDTH (FT)	PATCH AREA (SQ YD)	X4420573	X4420575	X4420577	X4420579	44213200	44213204		44213000
								CLASS A PATCHES TYPE I, 12" (SPECIAL) (SQ YD)	CLASS A PATCHES TYPE II, 12" (SPECIAL) (SQ YD)	CLASS A PATCHES TYPE III, 12" (SPECIAL) (SQ YD)	CLASS A PATCHES TYPE IV, 12" (SPECIAL) (SQ YD)	SAW CUTS (FT)	TIE BARS, 3/4" (TRANSVERSE) (EACH) (LONGITUDINAL) (EACH)		PATCHING REINFORCEMENT (SQ YD)
<b>I-55 NORTHBOUND</b>															
126+20	NORTHBOUND	DL	6	URBAN	6	6	4.0	4.0	0.0	0.0	0.0	24.0	10	0	4.0
318+10	NORTHBOUND	DL	6	RURAL	6	6	4.0	4.0	0.0	0.0	0.0	24.0	10	0	4.0
320+03	NORTHBOUND	DL	6	RURAL	6	6	4.0	4.0	0.0	0.0	0.0	24.0	10	0	4.0
475+21	NORTHBOUND	DL	6	RURAL	8	12	10.7	0.0	10.7	0.0	0.0	40.0	22	0	10.7
538+08	NORTHBOUND	DL	6	RURAL	6	12	8.0	0.0	8.0	0.0	0.0	36.0	22	0	8.0
540+18	NORTHBOUND	DL	6	RURAL	6	6	4.0	4.0	0.0	0.0	0.0	24.0	10	0	4.0
608+30	NORTHBOUND	DL	6	RURAL	6	12	8.0	0.0	8.0	0.0	0.0	36.0	22	0	8.0
<b>I-55 SOUTHBOUND</b>															
513+11	SOUTHBOUND	DL	8	RURAL	6	6	4.0	4.0	0.0	0.0	0.0	24.0	10	0	4.0
411+16	SOUTHBOUND	DL	8	RURAL	6	6	4.0	4.0	0.0	0.0	0.0	24.0	10	0	4.0
387+40	SOUTHBOUND	DL	8	RURAL	8	6	5.3	0.0	5.3	0.0	0.0	28.0	10	0	5.3
386+01	SOUTHBOUND	DL	8	RURAL	25	6	16.7	0.0	0.0	16.7	0.0	62.0	10	8	16.7
256+31	SOUTHBOUND	DL	8	URBAN	12	6	8.0	0.0	8.0	0.0	0.0	36.0	10	0	8.0
255+93	SOUTHBOUND	DL	8	URBAN	6	6	4.0	4.0	0.0	0.0	0.0	24.0	10	0	4.0
228+01	SOUTHBOUND	DL	8	URBAN	6	6	4.0	4.0	0.0	0.0	0.0	24.0	10	0	4.0
202+39	SOUTHBOUND	DL	8	URBAN	15	6	10.0	0.0	10.0	0.0	0.0	42.0	10	0	10.0
262+50	SOUTHBOUND	DL	8	URBAN	25	6	16.7	0.0	0.0	16.7	0.0	62.0	10	8	16.7
262+10	SOUTHBOUND	DL	8	URBAN	40	6	26.7	0.0	0.0	0.0	26.7	92.0	10	13	26.7
261+52	SOUTHBOUND	DL	8	URBAN	40	6	26.7	0.0	0.0	0.0	26.7	92.0	10	13	26.7
259+20	SOUTHBOUND	DL	8	URBAN	12	6	8.0	0.0	8.0	0.0	0.0	36.0	10	0	8.0
257+50	SOUTHBOUND	DL	8	URBAN	60	6	40.0	0.0	0.0	0.0	40.0	132.0	10	20	40.0
256+10	SOUTHBOUND	DL	8	URBAN	50	6	33.3	0.0	0.0	0.0	33.3	112.0	10	17	33.3
252+55	SOUTHBOUND	DL	8	URBAN	280	6	186.7	0.0	0.0	0.0	186.7	572.0	10	93	186.7
URBAN SUBTOTAL							368.0	12.0	26.0	16.7	313.3	1248.0	120.0	164.0	368.0
RURAL SUBTOTAL							68.7	20.0	32.0	16.7	0.0	322.0	136.0	8.0	68.7

MODEL: Schedule-1 [Sheet]  
FILE NAME: c:\p\work\illinois.gov\0902305\0570H38\_SHT\_DETAILS.dgn

USER NAME = jackson.chen	DESIGNED -	REVISED -
	DRAWN -	REVISED -
	CHECKED -	REVISED -
PLOT DATE = 5/13/2024	DATE -	REVISED -

**STATE OF ILLINOIS  
DEPARTMENT OF TRANSPORTATION**

**SCHEDULE OF QUANTITIES**

SCALE: SHEET OF 3 SHEETS STA. TO STA.

F.A.I RTE.	SECTION	COUNTY	TOTAL SHEETS	SHEET NO.
*	D5 CM PATCHING 2025-2	MCLEAN	15	12
CONTRACT NO. 70H38				
ILLINOIS		FED. AID PROJECT		

\* FAI 39 & 55

### SCHEDULE OF QUANTITIES

STATION	DIRECTION	LANE	TYPICAL	URBAN OR RURAL	LENGTH (FT)	WIDTH (FT)	PATCH AREA (SQ YD)	X4420553	44213200	44213204		44213000
								CLASS A PATCHES TYPE II, 10" (SPECIAL) (SQ YD)	SAW CUTS (FT)	TIE BARS, 3/4"		PATCHING REINFORCEMENT (SQ YD)
								(TRANSVERSE) (EACH)	(LONGITUDINAL) (EACH)			
I-55 NORTHBOUND												
232+10	SOUTHBOUND	DL	4	RURAL	10	12	13.3	13.3	44.0	22	0	13.3
RURAL SUBTOTAL							13.3	13.3	44.0	22	0	13.3

STATION	DIRECTION	LANE	TYPICAL	URBAN OR RURAL	LENGTH (FT)	WIDTH (FT)	PATCH AREA (SQ YD)	44200982	44200986	44200988	44201299	44213200	44213204	44200050
								CLASS B PATCHES TYPE II, 11" (SPECIAL) (SQ YD)	CLASS B PATCHES TYPE III, 11" (SPECIAL) (SQ YD)	CLASS B PATCHES TYPE IV, 11" (SPECIAL) (SQ YD)	DOWEL BARS 1 1/2" (EACH)	SAW CUTS (FT)	TIE BARS, 3/4" (LONGITUDINAL) (EACH)	WELDED WIRE REINFORCEMENT (SQ YD)
I-39 NORTHBOUND														
123+30	NORTHBOUND	DL	11	URBAN	6	12	8.0	8.0	0.0	0.0	20.0	54	0	0.0
123+30	NORTHBOUND	PL	11	URBAN	6	12	8.0	8.0	0.0	0.0	20.0	54	0	0.0
126+15	NORTHBOUND	PL	11	URBAN	8	12	10.7	10.7	0.0	0.0	20.0	60	0	0.0
126+20	NORTHBOUND	DL	11	URBAN	12	12	16.0	0.0	16.0	0.0	20.0	72	0	16.0
I-39 SOUTHBOUND														
127+00	SOUTHBOUND	DL	11	URBAN	15	12	20.0	0.0	20.0	0.0	20.0	81	0	20.0
127+00	SOUTHBOUND	ML	11	URBAN	40	12	53.3	0.0	0.0	53.3	30.0	156	27	53.3
127+00	SOUTHBOUND	DL	11	URBAN	40	12	53.3	0.0	0.0	53.3	30.0	156	27	53.3
URBAN SUBTOTAL							169.3	26.7	36.0	106.7	160.0	633	54	142.7

MODEL: Schedule-2 [Sheet]  
FILE NAME: c:\p\work\project\illinois.gov\09092305\0570H38\_SHT\_DETAILS.dgn

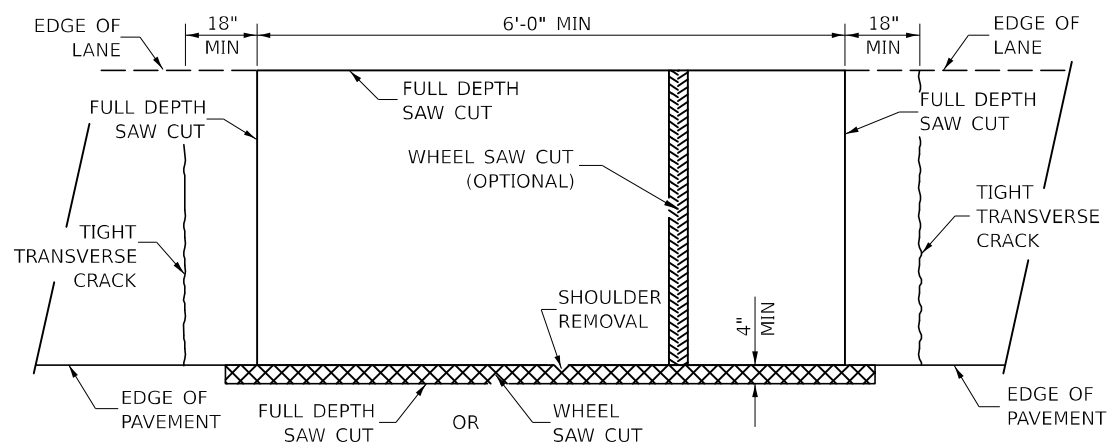
USER NAME = jackson.chen	DESIGNED -	REVISED -
	DRAWN -	REVISED -
	CHECKED -	REVISED -
PLOT DATE = 5/13/2024	DATE -	REVISED -

**STATE OF ILLINOIS  
DEPARTMENT OF TRANSPORTATION**

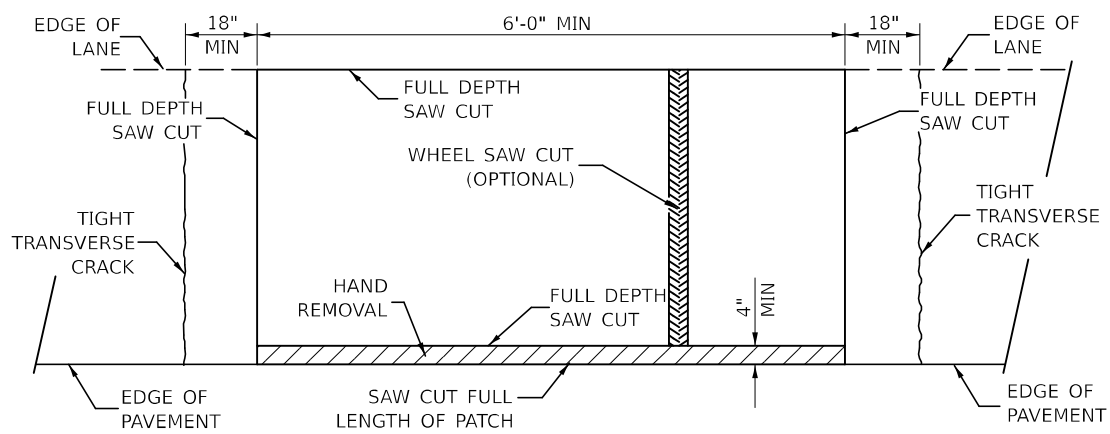
**SCHEDULE OF QUANTITIES**

SCALE: SHEET 3 OF 3 SHEETS STA. TO STA.

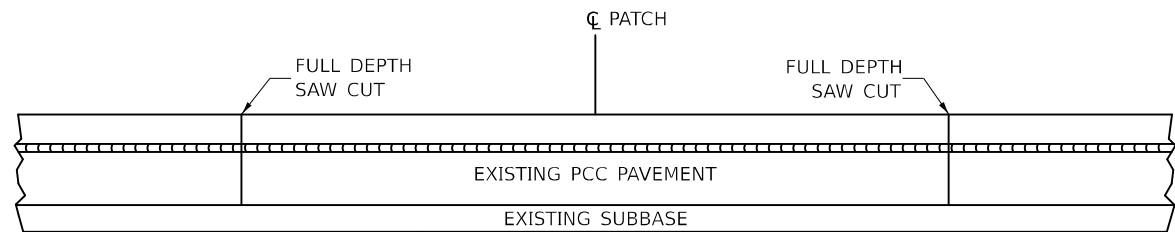
F.A.I RTE.	SECTION	COUNTY	TOTAL SHEETS	SHEET NO.
*	D5 CM PATCHING 2025-2	MCLEAN	15	13
CONTRACT NO. 70H38				
		ILLINOIS	FED. AID PROJECT	



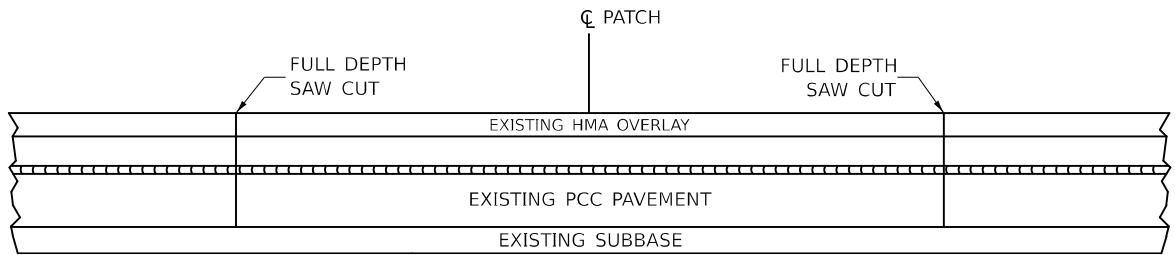
**PAVEMENT SAWING DETAIL  
(HMA SHOULDER)**



**PAVEMENT SAWING DETAIL  
(PCC SHOULDER)**

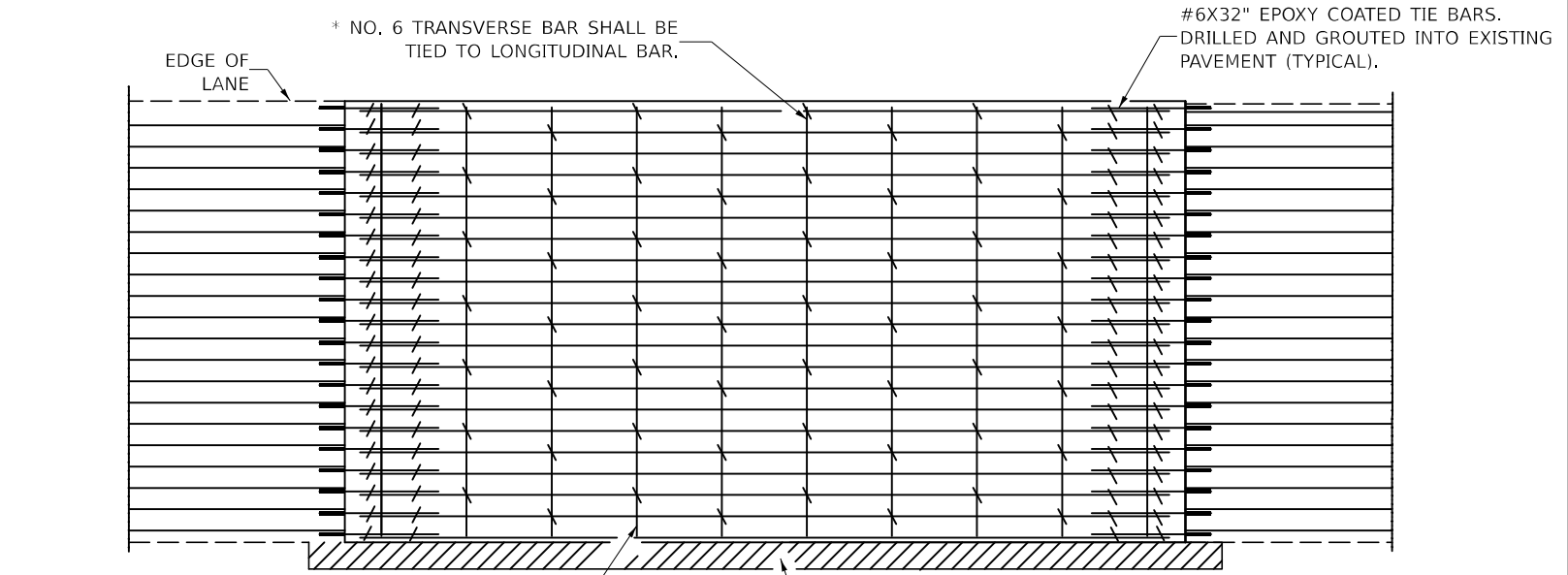


**EXISTING PAVEMENT WITHOUT HMA SURFACE**



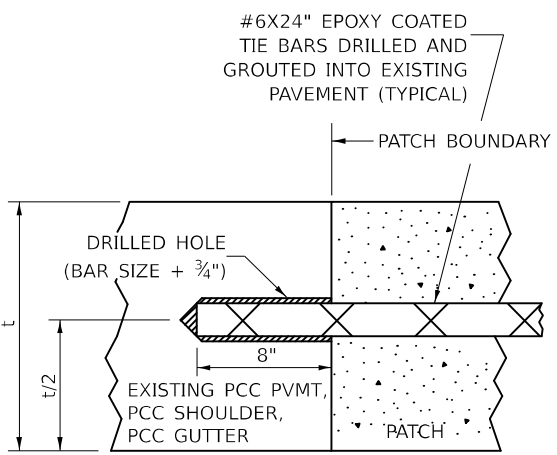
**EXISTING PAVEMENT WITH HMA SURFACE**

**PAVEMENT SAWING DETAIL FOR CLASS A PATCHING  
(CRC PAVEMENT)**



**PAVEMENT REINFORCEMENT DETAIL**

TRANSVERSE REBAR SHALL EXTEND TO OUTER LONGITUDINAL REBAR WHILE PROVIDING A MINIMUM 3" CLEARANCE FROM EXISTING PAVEMENT EDGE



**LONGITUDINAL CONSTRUCTION JOINT**

PATCHES MORE THAN 20' IN LENGTH SHALL BE TIED TO ADJACENT PAVEMENT, PCC SHOULDERS OR PCC CURB AND GUTTER WITH #6x24" EPOXY COATED TIE BARS AT 36" CENTERS.

**NOTES:**

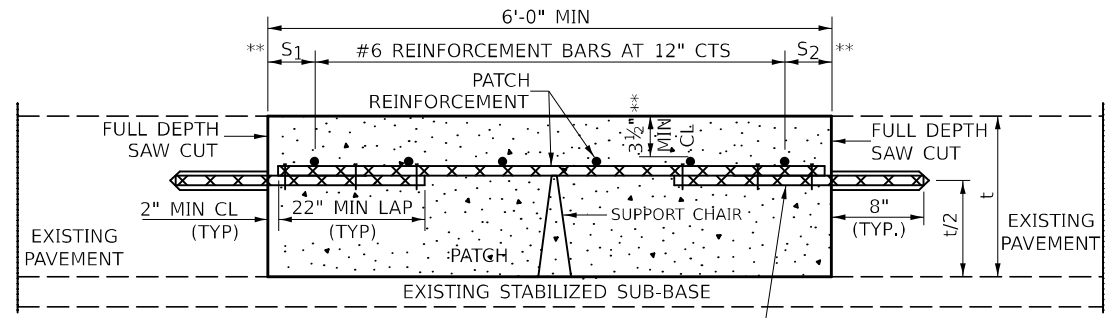
EXISTING LONGITUDINAL REINFORCEMENT SPACING; ±6 1/2".

SPACING OF NEW LONGITUDINAL REINFORCEMENT AND NEW LONGITUDINAL TIE BARS SHALL MATCH SPACING OF EXISTING REINFORCEMENT AND SHALL BE TIED TOGETHER WITH A MINIMUM OF TWO TIES PER BAR.

SUPPORT CHAIRS SHALL BE REQUIRED WHENEVER PATCH LENGTH EXCEEDS 6'-0"

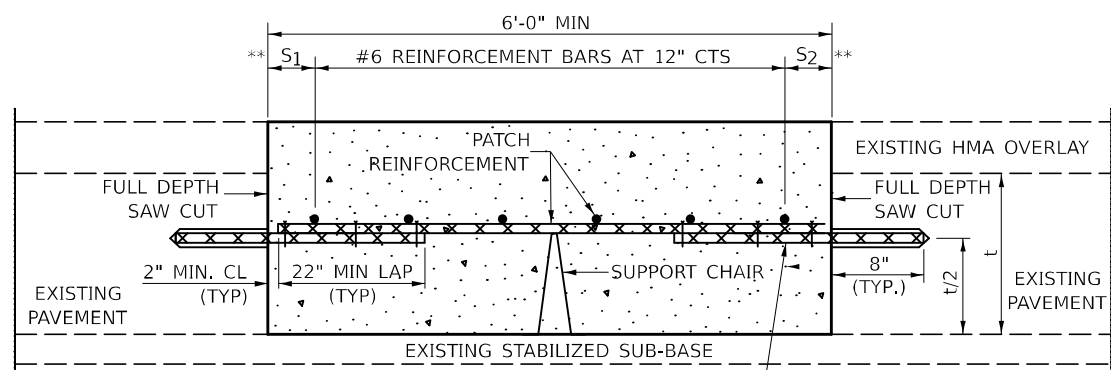
\* EVERY THIRD INTERSECTION MUST BE TIED. WHEN THE MINIMUM CLEARANCE CANNOT BE OBTAINED WITH THE TRANSVERSE REBAR ON TOP, THEN THE TRANSVERSE REBAR SHALL BE TIED TO THE BOTTOM OF THE LONGITUDINAL REBAR.

\*\* VARIABLES WHERE S<sub>1</sub> AND S<sub>2</sub> ARE 2 1/2" MIN. AND 12" MAX.



**WITHOUT HMA OVERLAY**

#6X32" EPOXY COATED TIE BARS DRILLED AND GROUTED INTO EXISTING PAVEMENT (TYPICAL)



**WITH HMA OVERLAY**

#6X32" EPOXY COATED TIE BARS DRILLED AND GROUTED INTO EXISTING PAVEMENT (TYPICAL)

**PATCHING DETAIL FOR CLASS A PATCHING  
(CRC PAVEMENT)**

Note: All dimensions are in INCHES (millimeters) unless otherwise shown.

MODEL: 44200AAA Sheet 1  
FILE NAME: c:\p\work\revit\illinois.gov\09092305\0570H38-Shit-Detail\_44200AAA.dgn

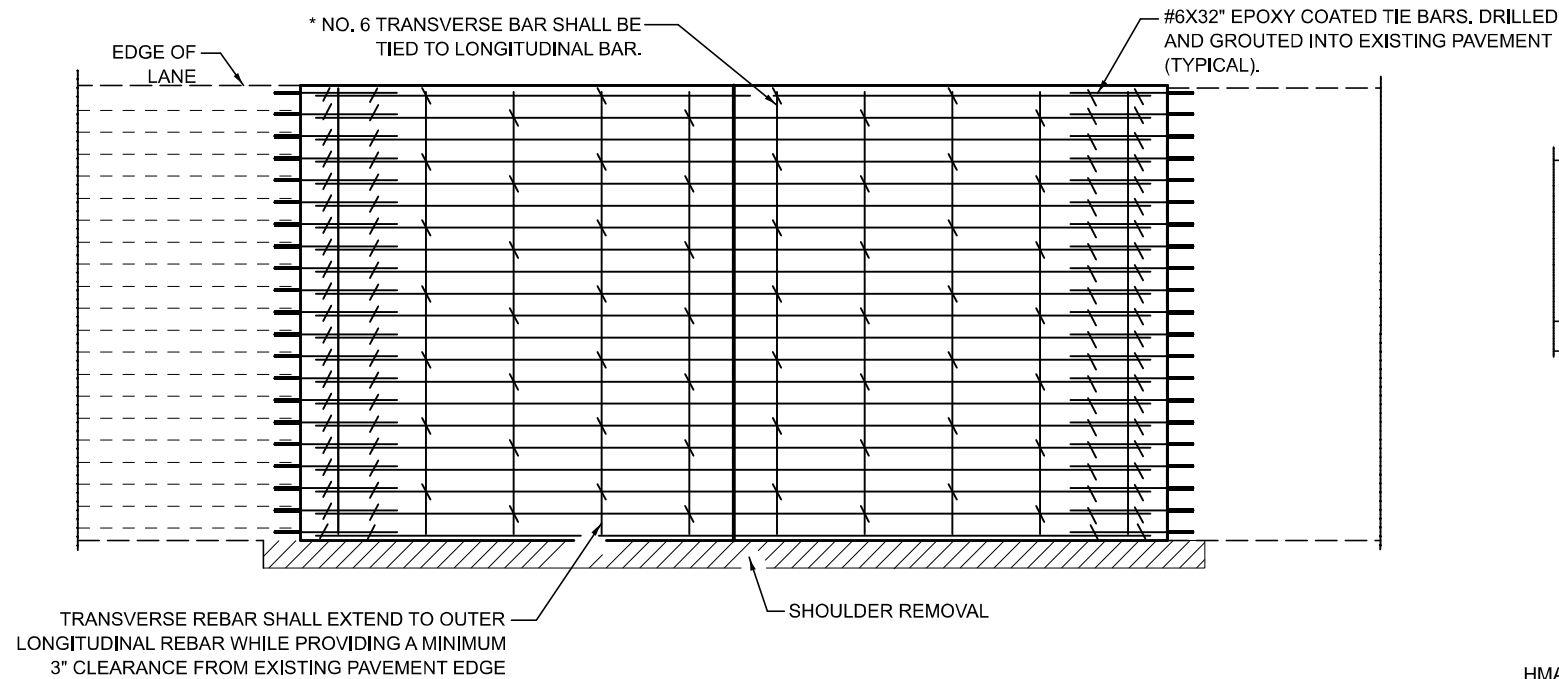
USER NAME = jackson.chen	DESIGNED - JWS	REVISED - 12/2023 - JWS
DRAWN -	REVISIONS -	
PLOT SCALE = 0.16666833' / in.	CHECKED -	REVISED -
PLOT DATE = 5/3/2024	DATE - 01/2021	REVISED -

**STATE OF ILLINOIS  
DEPARTMENT OF TRANSPORTATION**

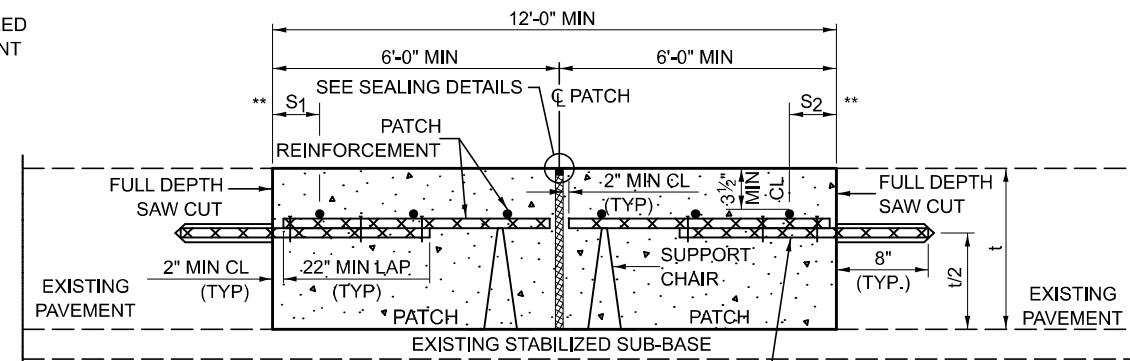
**CLASS A PATCHING (SPECIAL)**

SCALE: SHEET 1 OF 2 SHEETS STA. TO STA.

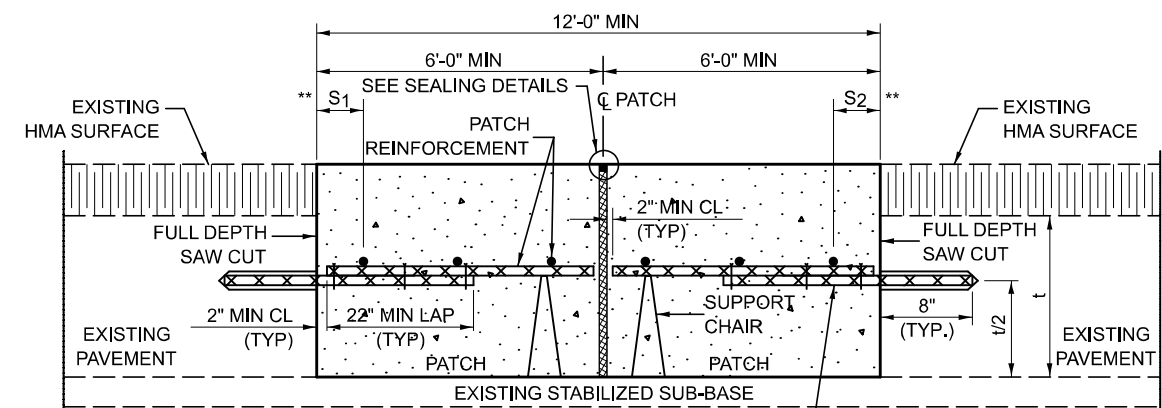
DISTRICT 5 DETAIL NO. 44200AAA				
F.A.I RTE.	SECTION	COUNTY	TOTAL SHEETS	SHEET NO.
*	D5 CM PATCHING 2025-2	MCLAN	15	14
CONTRACT NO. 70H38				



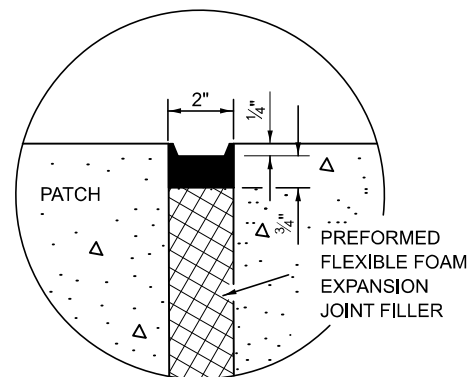
**PAVEMENT REINFORCEMENT DETAIL**



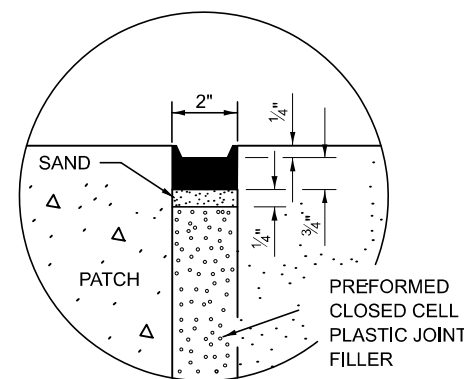
**WITHOUT HMA OVERLAY**



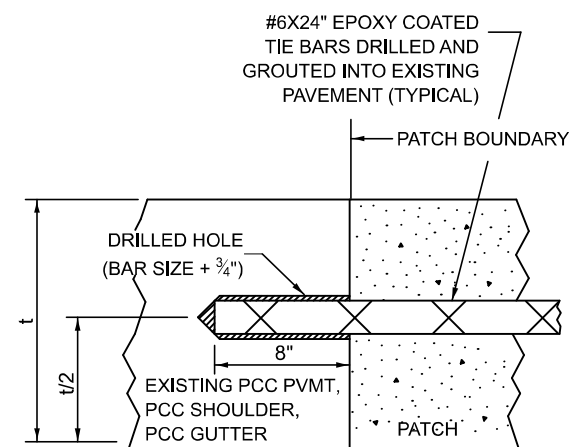
**WITH HMA OVERLAY**



**SEALING DETAIL**



**SEALING DETAIL**



**LONGITUDINAL CONSTRUCTION JOINT**

PATCHES MORE THAN 20' IN LENGTH SHALL BE TIED TO ADJACENT PAVEMENT, PCC SHOULDERS OR PCC CURB AND GUTTER WITH #6x24" EPOXY COATED TIE BARS AT 36" CENTERS.

**CLASS A PATCH WITH EXPANSION JOINT**

**NOTES:**

EXISTING LONGITUDINAL REINFORCEMENT SPACING:  $\pm 6\frac{1}{2}$ ".

SPACING OF NEW LONGITUDINAL REINFORCEMENT AND NEW LONGITUDINAL TIE BARS SHALL MATCH SPACING OF EXISTING REINFORCEMENT AND SHALL BE TIED TOGETHER WITH A MINIMUM OF TWO TIES PER BAR.

SUPPORT CHAIRS SHALL BE REQUIRED WHENEVER PATCH LENGTH EXCEEDS 6'-0"

\* EVERY THIRD INTERSECTION MUST BE TIED. WHEN THE MINIMUM CLEARANCE CANNOT BE OBTAINED WITH THE TRANSVERSE REBAR ON TOP, THEN THE TRANSVERSE REBAR SHALL BE TIED TO THE BOTTOM OF THE LONGITUDINAL REBAR.

\*\* VARIABLES WHERE  $S_1$  AND  $S_2$  ARE  $2\frac{1}{2}$ " MIN. AND 12" MAX.

Note: All dimensions are in INCHES (millimeters) unless otherwise shown.

MODEL: 44200AAA Sheet 2  
FILE NAME: c:\p\work\wis\illinois.gov\092305\0570H38-Sht-Detail\_44200AAA.dgn

USER NAME = jackson.chen	DESIGNED - JWS	REVISED - 12/2023 - JWS
PLOT SCALE = 0.16666833 / in.	CHECKED -	REVISED -
PLOT DATE = 5/3/2024	DATE - 01/2021	REVISED -

**STATE OF ILLINOIS  
DEPARTMENT OF TRANSPORTATION**

**CLASS A PATCHING (SPECIAL)**

SCALE: SHEET 2 OF 2 SHEETS STA. TO STA.

**DISTRICT 5 DETAIL NO. 44200AAA**

F.A.I RTE.	SECTION	COUNTY	TOTAL SHEETS	SHEET NO.
*	D5 CM PATCHING 2025-2	MCLEAN	15	15

CONTRACT NO. 70H38