

INDEX OF SHEETS

- 1 COVER SHEET
- 2 INDEX OF SHEETS, LIST OF IDOT HIGHWAY STANDARDS, GENERAL NOTES & COMMITMENTS
- 3-7 SUMMARY OF QUANTITIES
- 8 TYPICAL SECTIONS
- 9-10 SCHEDULE OF QUANTITIES
- 11-11B ALIGNMENT, TIES, AND BENCHMARKS
- 12-20 MAINTENANCE OF TRAFFIC PLANS
- 21-22 PLAN & PROFILE
- 23 REMOVAL PLANS
- 24-25 DRAINAGE PLAN AND PROFILES
- 26 EROSION AND SEDIMENT CONTROL PLANS
- 27 SIGNING AND PAVEMENT MARKING PLANS
- 28 JOINTING DETAILS
- 29 INTERSECTION DETAILS
- 30-31 SIGNAL DETAILS
- 32-35 STRUCTURAL PLANS - 4'x4' BOX CULVERT
- 36-48 TEMPORARY CROSS SECTIONS
- 49-70 CROSS SECTIONS

HIGHWAY STANDARDS

- 000001-08 STANDARD SYMBOLS, ABBREVIATIONS AND PATTERNS
- 001001-02 AREAS OF REINFORCEMENT BARS
- 001006 DECIMAL OF AN INCH AND OF A FOOT
- 280001-07 TEMPORARY EROSION CONTROL SYSTEMS
- 420001-10 PAVEMENT JOINTS
- 420101-07 24' (7.2 m) JOINTED PCC PAVEMENT
- 542201-02 REINFORCED CONCRETE END SECTIONS FOR PIPE CULVERTS, 15" THRU 36" DIA., SKEWED WITH ROADWAY
- 606301-04 PC CONCRETE ISLANDS AND MEDIANS
- 701006-05 OFF-ROAD OPERATIONS, 2L, 2W, 15' (4.5 m) TO 24" (600mm) FROM PAVEMENT EDGE
- 701201-05 LANE CLOSURE, 2L, 2W, DAY ONLY, FOR SPEEDS ≥ 45 MPH
- 701901-09 TRAFFIC CONTROL DEVICES
- 704001-08 TEMPORARY CONCRETE BARRIER
- 780001-05 TYPICAL PAVEMENT MARKINGS
- 781001-04 TYPICAL APPLICATIONS RAISED REFLECTIVE PAVEMENT MARKERS
- 782001-01 CURB REFLECTORS
- 880001-01 SPAN WIRE MOUNTED SIGNALS AND FLASHING BEACON INSTALLATION
- 542416 SLOPED METAL END SECTIONS FOR PIPE ARCH CULVERTS 15" THRU 72" EQUIVALENT DIAMETER
- 606001-08 CONCRETE CURB TYPE B AND COMBINATION CONCRETE CURB AND GUTTER
- 720001-01 SIGN PANEL MOUNTING DETAILS
- 720006-04 SIGN PANEL ERECTION DETAILS
- 728001-01 TELESCOPING STEEL SIGN SUPPORT
- 731001-01 BASE FOR TELESCOPING STEEL SIGN SUPPORT
- 782006-01 GUARDRAIL AND BARRIER WALL REFLECTOR MOUNTING DETAILS
- 873001-02 TRAFFIC SIGNAL GROUNDING & BONDING

GENERAL NOTES

1. ALL ELEVATIONS ARE BASED ON NAVD 88-DATUM.
2. UTILITIES KNOWN TO HAVE FACILITIES WITHIN THE PROJECT AREA ARE AS FOLLOWS:
ELECTRIC AND GAS - AMEREN
WATER - EGYPTIAN WATER COMPANY
COMMUNICATIONS - CLEARWAVE FIBER LLC
COMMUNICATIONS - EGYPTIAN TELEPHONE COOP. ASSN.
COMMUNICATIONS - FRONTIER COMMUNICATIONS
CABLE TV - NEWWAVE COMMUNICATIONS
3. ABANDONED UNDERGROUND UTILITIES THAT CONFLICT WITH CONSTRUCTION SHALL BE DISPOSED OF OUTSIDE THE LIMITS OF THE RIGHT-OF-WAY ACCORDING TO ARTICLE 202.03 OF THE STANDARD SPECIFICATIONS AND AS DIRECTED BY THE ENGINEER. THIS WORK WILL BE PAID FOR AS EXTRA WORK ACCORDING TO ARTICLE 109.04 OF THE STANDARD SPECIFICATIONS.
4. DISTURBED AREAS SHALL RECEIVE PERMANENT STABILIZATION WITHIN 7 DAYS OF COMPLETION OF CONSTRUCTION ACTIVITIES. TEMPORARY STABILIZATION OF WORK AREAS IS REQUIRED FOR ALL AREAS REMAINING UNDISTURBED FOR 14 DAYS, UNLESS WORK RESUMES PRIOR TO 21 DAYS. TEMPORARY STABILIZATION MUST BE APPROVED BY THE ENGINEER.
5. ALL EXISTING RIGHT-OF-WAY LINES AND PROPERTY LINES SHOWN ON THE ROADWAY PLAN SHEETS ARE GRAPHICAL REPRESENTATIONS AND SHALL NOT BE USED AS A MEANS TO ESTABLISH OWNERSHIP. ~~IN ALL MATTERS RELATING TO RIGHT-OF-WAY, THE PLAT OF HIGHWAYS SHALL BE THE CONTROLLING DOCUMENT.~~
6. CHANGEABLE MESSAGE SIGNS SHALL BE OPERATIONAL TWO WEEKS PRIOR TO THE STAGED CONSTRUCTION OF THE IL 4/150 INTERSECTION AND SHALL BE LOCATED AS DIRECTED BY THE ENGINEER.
7. THE PROPOSED PAVEMENT MARKING SHALL MATCH THE LOCATIONS OF THE EXISTING PAVEMENT MARKING, EXCEPT AS DEPICTED ON THE PAVEMENT MARKING DETAIL SHEETS, OR AS DIRECTED BY THE ENGINEER.
8. THE CONTRACTOR SHALL PROVIDE POSITIVE AND ADEQUATE DRAINAGE AT ALL TIMES.

COMMITMENTS

NONE

APPLICATION RATES

THE FOLLOWING RATES OF APPLICATION WERE UTILIZED TO CALCULATE CONTRACT QUANTITIES:

AGGREGATE SHOULDERS, TYPE B	1.80 TON/CY
AGGREGATE FOR TEMPORARY ACCESS	2.05 TON/CY
BITUMINOUS MATERIALS - TACK COAT	0.05 LB/SF
BITUMINOUS MATERIALS - PRIME COAT	0.025 LB/SF
HOT-MIX ASPHALT SURFACE/BINDER/BASE	112 LB/SY PER INCH
NITROGEN FERTILIZER NUTRIENT	90 LB/ACRE
PHOSPHORUS FERTILIZER NUTRIENT	90 LB/ACRE
POTASSIUM FERTILIZER NUTRIENT	90 LB/ACRE
TEMPORARY EROSION CONTROL SEEDING	100 LB/ACRE

**GN-406H
HMA MIXTURE REQUIREMENT TABLE**

MIXTURE USE(S):	TEMPORARY PAVEMENT	DRIVEWAY APRONS	STABILIZED SUBBASE	PATCHING
BINDER GRADE (AC/PG):	PG 64-22	PG 64-22	PG 64-22	PG 64-22
DESIGN AIR VOIDS:	4.0% @ Ndes=90	4.0% @ Ndes=90	4.0% @ Ndes=30	4.0% @ Ndes=70
MIXTURE COMPOSITION: (MIXTURE GRADATION)	IL-9.5	IL-9.5	IL-19.0L	IL-19.0
FRICTION AGGREGATE:	MIXTURE "D"	MIXTURE "D"		MIXTURE "B"
MIXTURE WEIGHT:	112 LB/SQ YD/IN	112 LB/SQ YD/IN	112 LB/SQ YD/IN	112 LB/SQ YD/IN
QUALITY MANAGEMENT PROGRAM:	QC/QA	QC/QA	QC/QA	QC/QA
MATERIAL TRANSFER DEVICE (REQUIRED?)	NO	NO	NO	NO

REVISD 7-23-2024

REV - MS

MODEL: Named Boundary Sheet H
 FILE NAME: P:\Project\Kaskaskia\110810114\CD\10_IDOT\CD - Show\DRMMS-requirements.dgn
 DATE: 7/23/2024 10:58:10 AM



USER NAME	DESIGNED	REVISED
DRAWN	CHECKED	DATE

**STATE OF ILLINOIS
DEPARTMENT OF TRANSPORTATION**

**FAP 682/861A (IL 4150)
INDEX OF SHEETS, STANDARDS, GENERAL NOTES, AND COMMITMENTS**

F.A.P. SHEET	SECTION	COUNTY	TOTAL SHEETS	SHEET NO.
	110,118NR-1	RANDOLPH	70	2
*F.A.P. 682F A.P. 861A			CONTRACT NO. 76M93	
ILLINOIS FED. AID PROJECT				

SCALE: SHEET 1 OF 1 SHEETS STA. TO STA.

CODE NO.	ITEM	UNIT	TOTAL QUANTITY	FAP 682/861A	FAP 861A
				RANDOLPH COUNTY	RANDOLPH COUNTY
				100% STP	100% STP
				ROADWAY	ROADWAY
				0004	0004
				RURAL	RURAL
20200100	EARTH EXCAVATION	CU YD	4,333	2,748	1,585
20700220	POROUS GRANULAR EMBANKMENT	CU YD	175	0	175
20800150	TRENCH BACKFILL	CU YD	72	0	72
25000210	SEEDING, CLASS 2A	ACRE	2	1	1
25000400	NITROGEN FERTILIZER NUTRIENT	POUND	129	78	51
25000500	PHOSPHORUS FERTILIZER NUTRIENT	POUND	129	78	51
25000600	POTASSIUM FERTILIZER NUTRIENT	POUND	129	78	51
25100630	EROSION CONTROL BLANKET	SQ YD	6,889	4,177	2,712
28000305	TEMPORARY DITCH CHECKS	FOOT	100	100	0
28200200	FILTER FABRIC	SQ YD	17	0	17
28000400	PERIMETER EROSION BARRIER	FOOT	2,831	1,207	1,624
28100107	STONE RIPRAP, CLASS A4	SQ YD	17	0	17
30300112	AGGREGATE SUBGRADE IMPROVEMENT 12"	SQ YD	7,057	4,352	2,705
31100300	SUBBASE GRANULAR MATERIAL, TYPE A 4"	SQ YD	236	236	0
31200500	STABILIZED SUBBASE - HOT-MIX ASPHALT, 4"	SQ YD	7,012	4,307	2,705
35100500	AGGREGATE BASE COURSE, TYPE A 6"	SQ YD	869	321	548
40201000	AGGREGATE FOR TEMPORARY ACCESS	TON	1,090	499	591

* = SPECIALTY ITEM



△ REVISED 7-22-2024
REV - MS

MODEL: R00 Rev: 1
FILE NAME: P:\Project\682\681A\Drawings\682\681A\682\681A-40201000.dwg
DATE: 7/1/2024 10:00:00 AM



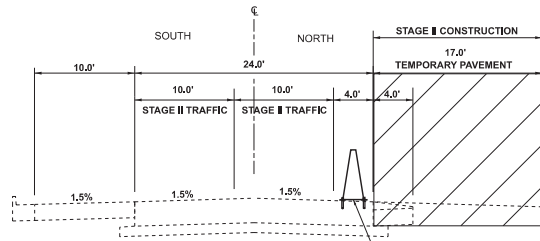
USERNAME = jwamer	DESIGNED -	REVISED -
PLOT SCALE = 0.10000000 / in.	CHECKED -	REVISED -
PLOT DATE = 7/1/2024	DATE -	REVISED -

STATE OF ILLINOIS
DEPARTMENT OF TRANSPORTATION

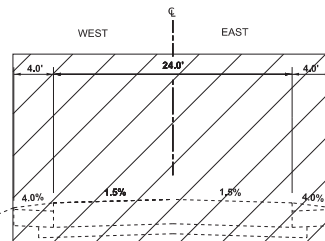
FAP 682/861A (IL 4150)
SUMMARY OF QUANTITIES

SCALE: SHEET 1 OF 5 SHEETS STA. TO STA.

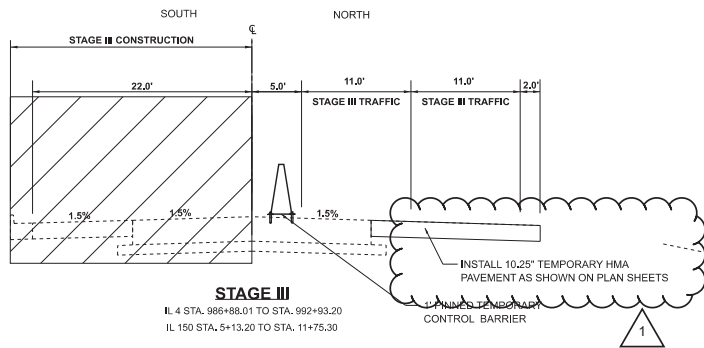
F.A.P. SITE	SECTION	COUNTY	TOTAL SHEETS	SHEET NO.
*	110,119NR-1	RANDOLPH	70	3
*F.A.P. 682/F.A.P. 861A			CONTRACT NO. 76M93	
ILLINOIS FED. AID PROJECT				



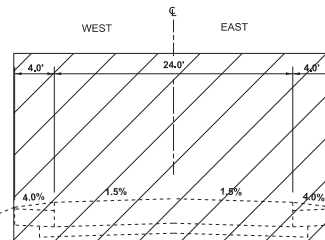
STAGE II
 IL 4 STA. 986+88.01 TO STA. 992+93.20
 IL 150 STA. 5+13.20 TO STA. 11+75.30
 1' PINNED TEMPORARY CONTROL BARRIER



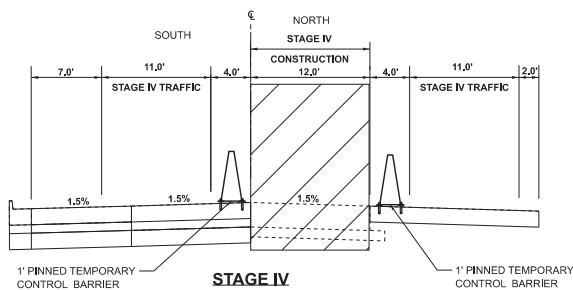
STAGE II
 IL 4 STA. 993+13.26 TO STA. 996+41.85



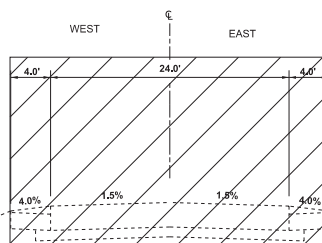
STAGE III
 IL 4 STA. 986+88.01 TO STA. 992+93.20
 IL 150 STA. 5+13.20 TO STA. 11+75.30
 1' PINNED TEMPORARY CONTROL BARRIER



STAGE III
 IL 4 STA. 993+13.26 TO STA. 996+41.85



STAGE IV
 IL 4 STA. 986+88.01 TO STA. 992+93.20
 IL 150 STA. 5+13.20 TO STA. 11+75.30
 1' PINNED TEMPORARY CONTROL BARRIER



STAGE IV
 IL 4 STA. 993+13.26 TO STA. 994+07.27

STAGING NOTES

STAGE 1

1. IN STAGE 1, CLOSE AND DETOUR EAST LEG OF IL 150, INSTALL TEMPORARY CONCRETE BARRIER (TCB) AS NECESSARY. REMOVE AND REPLACE DRAINAGE STRUCTURE AT STA. 992+72.

STAGE 2

2. IN STAGE 2, CLOSE AND DETOUR IL 4, PLACE TEMPORARY CONCRETE BARRIER ON THE WESTBOUND THRU TRAFFIC 1' FROM THE EXISTING NORTH EDGE OF PAVEMENT, SHIFT EASTBOUND AND WESTBOUND TRAFFIC TO THE SOUTH MAINTAINING 10' TRAVEL LANES, REMOVE THE EXISTING HMA SHOULDER ALONG THE WESTBOUND LANE AND PAVEMENT AND SHOULDER ON IL 4, CONSTRUCT TEMPORARY PAVEMENT (APPROX. 17' WIDE) ALONG THE NORTH SIDE OF IL 150 AND START ON THE IL 4 PAVEMENT AND SHOULDERS, CONSTRUCT FINAL PAVEMENT STRUCTURE FOR THE IL 4 PAVEMENT AT THE INTERSECTION (USE A TEMPORARY HMA MIXTURE AT THE PROPOSED MEDIAN LOCATION), MAINTAIN ACCESS FOR ENTRANCES.

STAGE 3

1. IN STAGE 3, MAINTAIN IL 4 CLOSURE, CLOSE THE ENTRANCE JUST SOUTHWEST OF THE INTERSECTION BUT MAINTAIN ACCESS FOR ALL OTHER ENTRANCES, RELOCATE TEMPORARY CONCRETE BARRIER ON THE WESTBOUND LANE 2' FROM THE EDGE OF THE EXISTING CENTERLINE, SHIFT EASTBOUND AND WESTBOUND TRAFFIC ON TO THE WIDENED WESTBOUND LANE MAINTAINING 11' TRAVEL LANES, CONSTRUCT THE EASTBOUND IL 150 LANE AND SHOULDER, CONSTRUCT MEDIAN/DITCHES IN FRONT OF CAR DEALERSHIP.

STAGE 4

1. IN STAGE 4, MAINTAIN IL 4 CLOSURE, KEEP ENTRANCE JUST SOUTHWEST OF THE INTERSECTION CLOSED BUT MAINTAIN ACCESS FOR ALL OTHER ENTRANCES, RELOCATE TEMPORARY CONCRETE BARRIER FROM THE WESTBOUND LANE TO THE EASTBOUND LANE 1' FROM THE EDGE OF EXISTING CENTERLINE, PLACE TEMPORARY CONCRETE BARRIER ON THE TEMPORARY PAVEMENT 1' FROM THE EDGE OF PAVEMENT, KEEP THE WESTBOUND TRAFFIC ON THE TEMPORARY PAVEMENT AND SWITCH THE EASTBOUND TRAFFIC ONTO THE EASTBOUND LANE, CONSTRUCT THE WESTBOUND IL 150 LANE/SOULDER.

MODEL: NOT TO SCALE (Sheet 1 of 9)
 FILE NAME: \\p01001001\proj\682861A\682861A.dwg (11/18/2024) - 11/18/2024 - 11/18/2024 - 11/18/2024 - 11/18/2024



USER NAME	rwerner	DESIGNED	-	REVISED	-	7/22/2024	JRW
DRAWN	-	REVISION	-				
CHECKED	-	REVISION	-				
DATE	-	REVISION	-				
PLOT SCALE	0.166666667 in.						
PLOT DATE	7/18/2024						

**STATE OF ILLINOIS
 DEPARTMENT OF TRANSPORTATION**

**FAP 682861A (IL 4150)
 MAINTENANCE OF TRAFFIC TYPICAL SECTIONS**

SCALE:	SHEET 1	OF 9	SHEETS	STA.	TO STA.	F.A.P. RTE:	SECTION	COUNTY	TOTAL SHEETS	SHEET NO.
						*	110,119NR-1	RANDOLPH	70	12
						*F.A.P. 682F.A.P. 881A			CONTRACT NO. 76M93	
									ILLINOIS FED. AID PROJECT	

MODEL: I:\19-400-FAP-118\19-400-FAP-118.dwg
 FILE NAME: 19-400-FAP-118\19-400-FAP-118.dwg
 PROJECT: 19-400-FAP-118
 SHEET: 5 OF 16

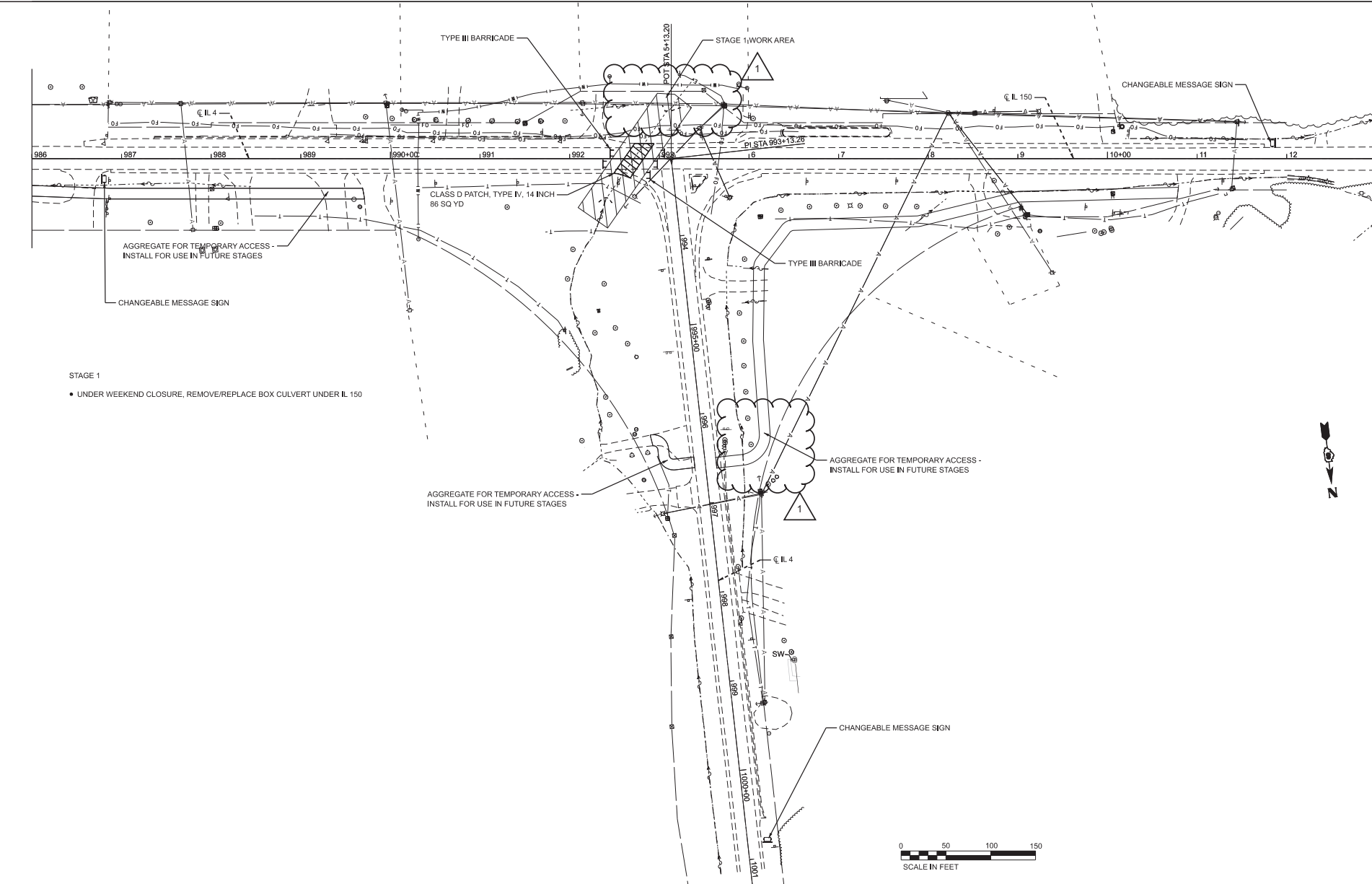


USER NAME	pwerner	DESIGNED	-	REVISED	-	7/22/2024	JRW
DRAWN	-	CHECKED	-	REVISED	-		
PLOT SCALE	0.16666667 / in.	DATE	-	REVISED	-		
PLOT DATE	7/18/2024						

STATE OF ILLINOIS
DEPARTMENT OF TRANSPORTATION

FAP 682/861A (IL 4150)
MAINTENANCE OF TRAFFIC - STAGE 1

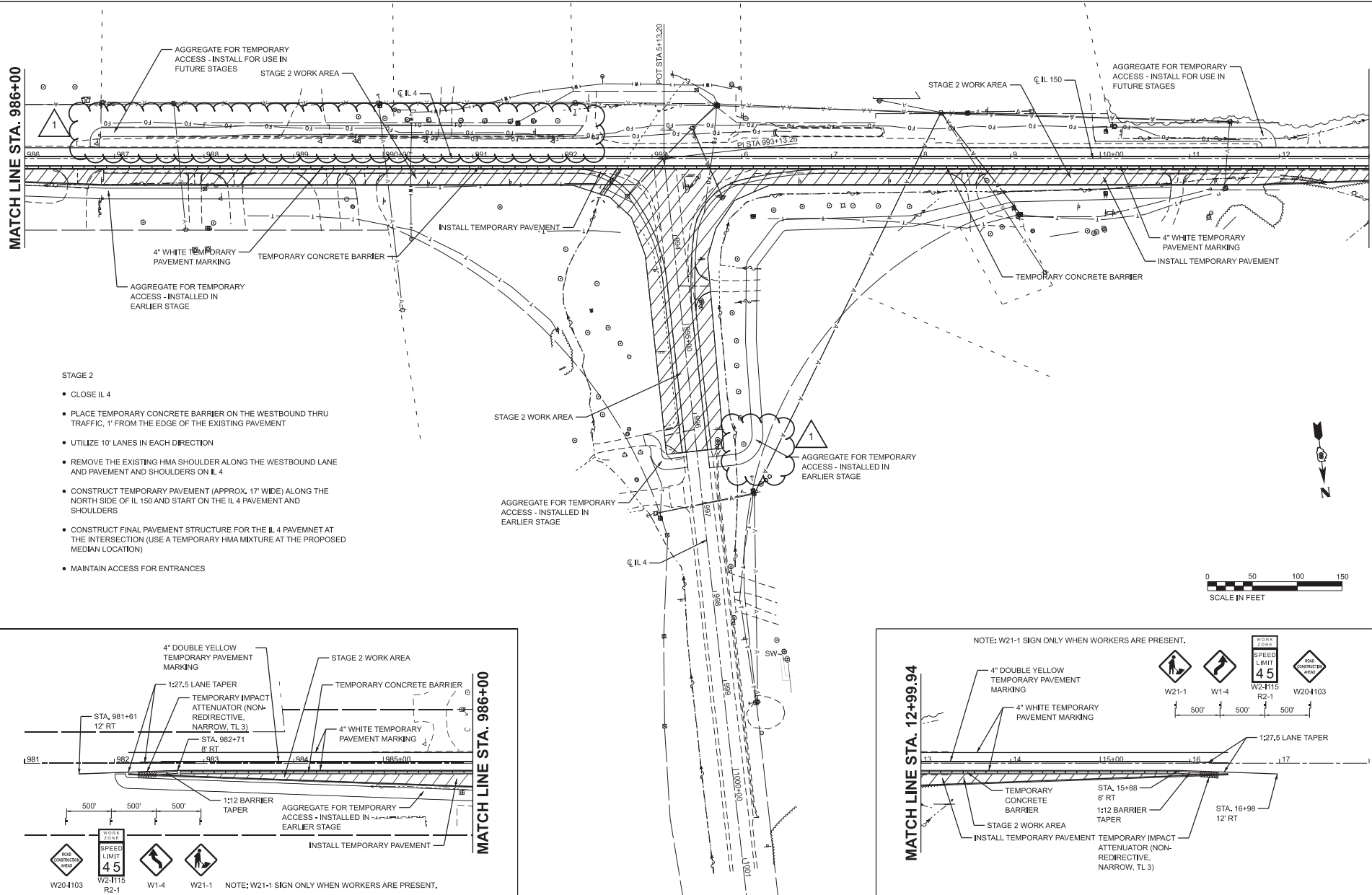
F.A. RTE.	SECTION	COUNTY	TOTAL SHEETS	SHEET NO.
				16
*F.A.P. 682/F.A.P. 861A			CONTRACT NO.	
ILLINOIS			FED. AID PROJECT	



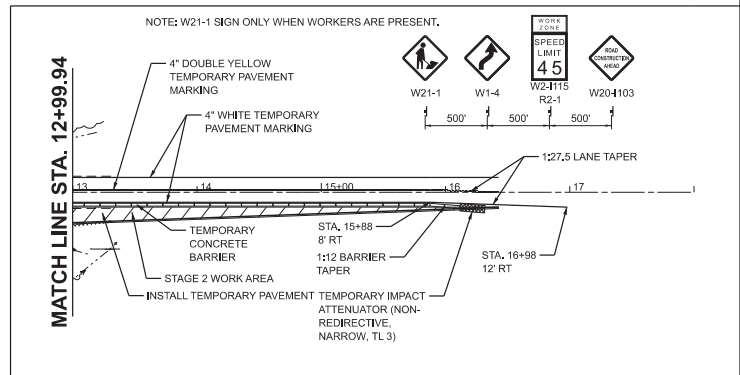
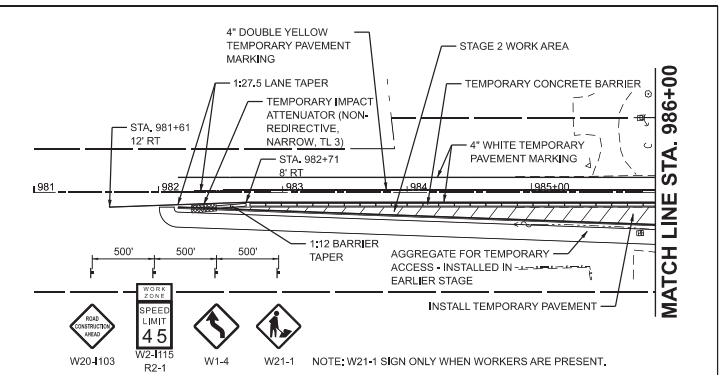
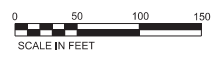
STAGE 1
 • UNDER WEEKEND CLOSURE, REMOVE/REPLACE BOX CULVERT UNDER IL 150

MATCH LINE STA. 986+00

MATCH LINE STA. 12+99.94



- STAGE 2**
- CLOSE IL 4
 - PLACE TEMPORARY CONCRETE BARRIER ON THE WESTBOUND THRU TRAFFIC, 1' FROM THE EDGE OF THE EXISTING PAVEMENT
 - UTILIZE 10' LANES IN EACH DIRECTION
 - REMOVE THE EXISTING HMA SHOULDER ALONG THE WESTBOUND LANE AND PAVEMENT AND SHOULDERS ON IL 4
 - CONSTRUCT TEMPORARY PAVEMENT (APPROX. 17' WIDE) ALONG THE NORTH SIDE OF IL 150 AND START ON THE IL 4 PAVEMENT AND SHOULDERS
 - CONSTRUCT FINAL PAVEMENT STRUCTURE FOR THE IL 4 PAVEMENT AT THE INTERSECTION (USE A TEMPORARY HMA MIXTURE AT THE PROPOSED MEDIAN LOCATION)
 - MAINTAIN ACCESS FOR ENTRANCES



MODEL: I:\190_4007 Stage 2 Plan (2)4.dwg
 FILE NAME: I:\190_4007 Stage 2 Plan (2)4.dwg
 PLOT DATE: 7/18/2024



USER NAME	jpawner	DESIGNED	-	REVISED	-
DRAWN	-	REVISED	-	7/22/2024	JRW
PLOT SCALE	0.16666667 / in.	CHECKED	-	REVISED	-
PLOT DATE	7/18/2024	DATE	-	REVISED	-

**STATE OF ILLINOIS
DEPARTMENT OF TRANSPORTATION**

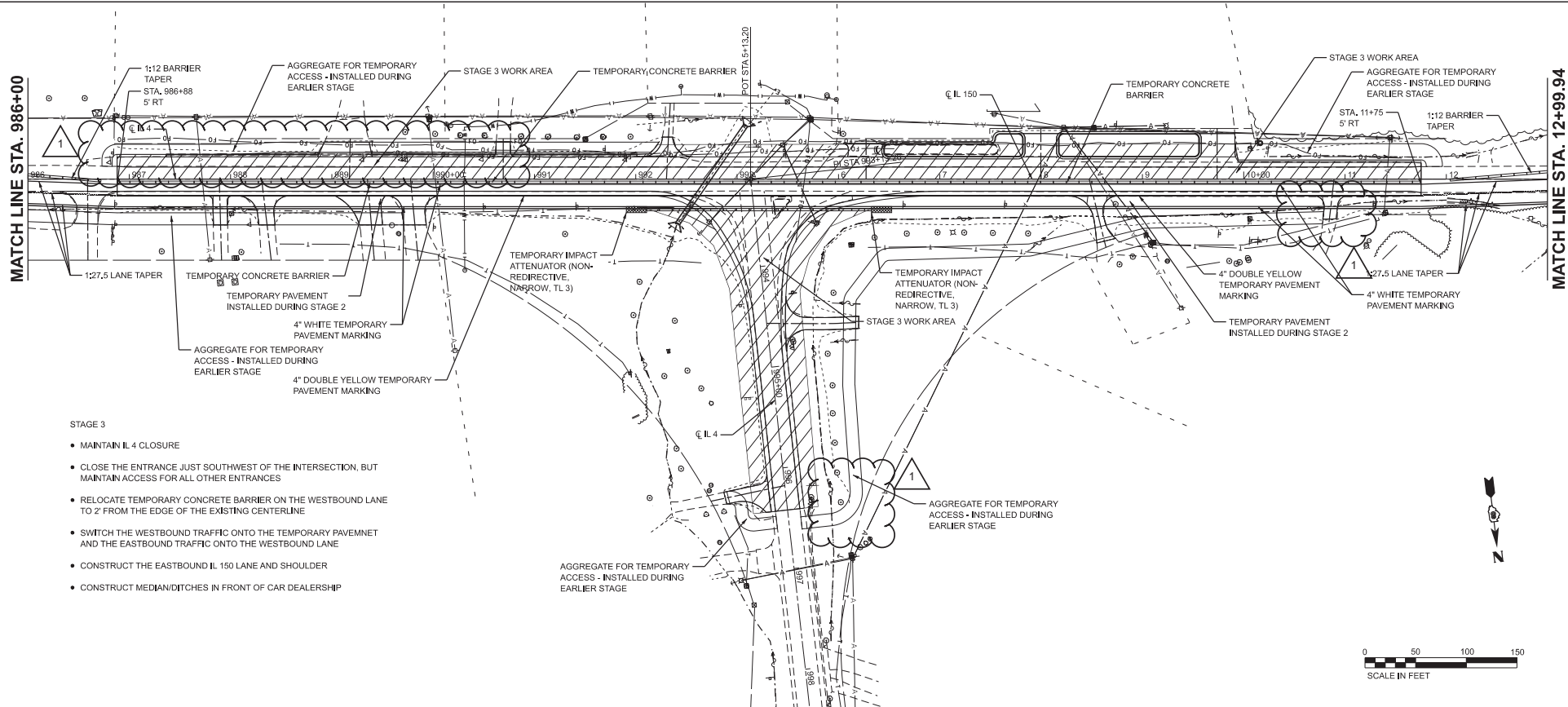
**FAP 682/861A (IL 4150)
MAINTENANCE OF TRAFFIC - STAGE 2**

SCALE: SHEET 6 OF 9 SHEETS STA. TO STA.

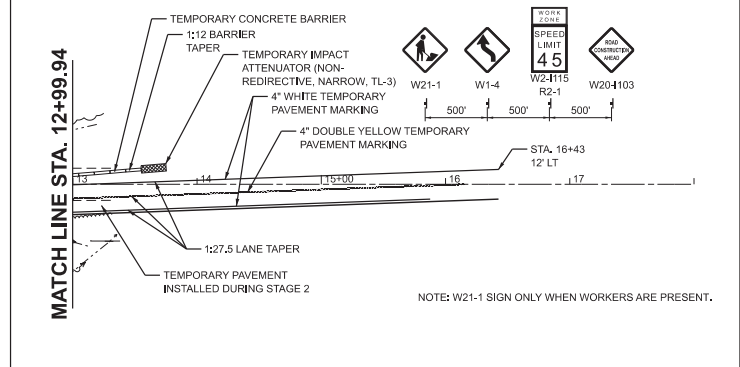
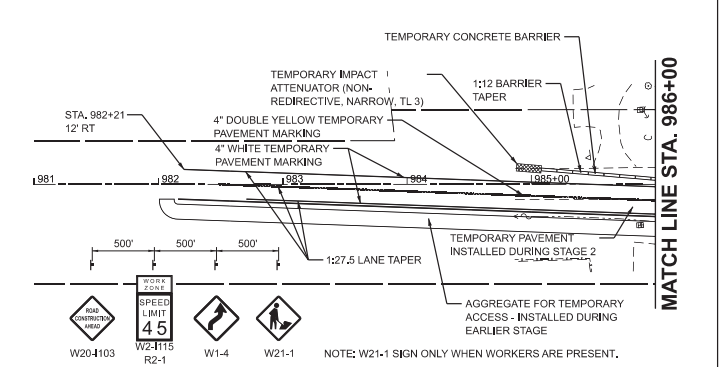
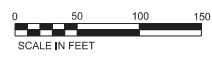
F.A.P. RTE.	SECTION	COUNTY	TOTAL SHEET NO.
110	110,119R-1	RANDOLPH	70
F.A.P. 682/F.A.P. 881A			CONTRACT NO. 76M93
ILLINOIS			FED. AID PROJECT

MATCH LINE STA. 986+00

MATCH LINE STA. 12+99.94



- STAGE 3**
- MAINTAIN IL 4 CLOSURE
 - CLOSE THE ENTRANCE JUST SOUTHWEST OF THE INTERSECTION, BUT MAINTAIN ACCESS FOR ALL OTHER ENTRANCES
 - RELOCATE TEMPORARY CONCRETE BARRIER ON THE WESTBOUND LANE TO 2' FROM THE EDGE OF THE EXISTING CENTERLINE
 - SWITCH THE WESTBOUND TRAFFIC ONTO THE TEMPORARY PAVEMENT AND THE EASTBOUND TRAFFIC ONTO THE WESTBOUND LANE
 - CONSTRUCT THE EASTBOUND IL 150 LANE AND SHOULDER
 - CONSTRUCT MEDIAN/DITCHES IN FRONT OF CAR DEALERSHIP



	USER NAME	pwerner	DESIGNED	-	REVISED	-	7/22/2024 JRW
	PLOT SCALE	0.166666633 / in.	DRAWN	-	REVISED	-	
	PLOT DATE	7/18/2024	CHECKED	-	REVISED	-	
			DATE	-	REVISED	-	

**STATE OF ILLINOIS
DEPARTMENT OF TRANSPORTATION**

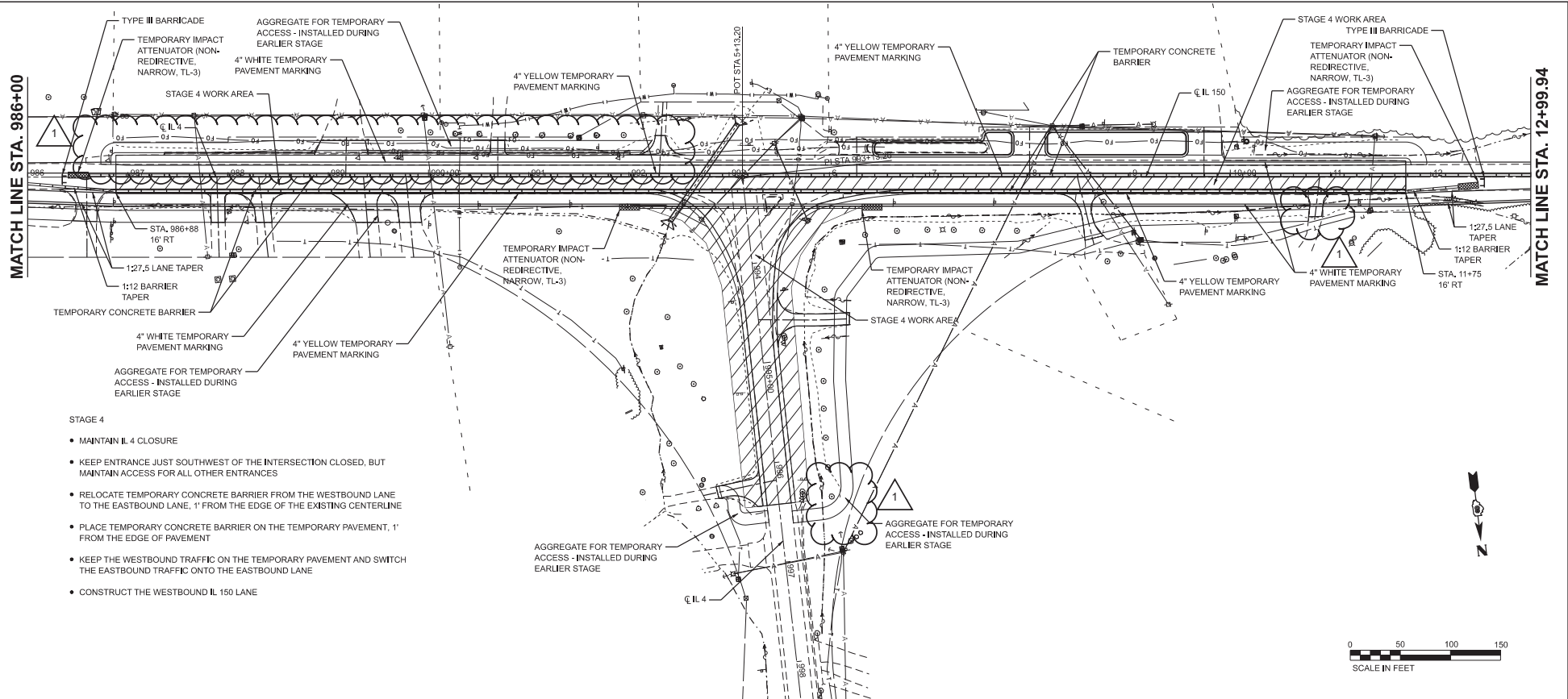
**FAP 682861A (IL 4150)
MAINTENANCE OF TRAFFIC - STAGE 3**

F.A. RTE.	SECTION	COUNTY	TOTAL SHEETS	SHEET NO.
			18	
*F.A.P. 682F.A.P. 881A			CONTRACT NO.	
ILLINOIS		FED. AID PROJECT		

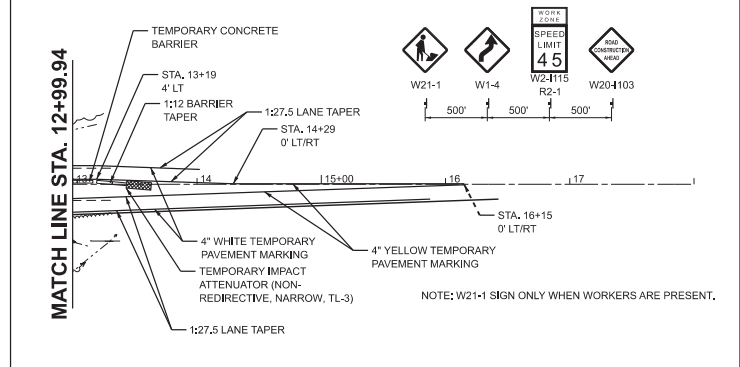
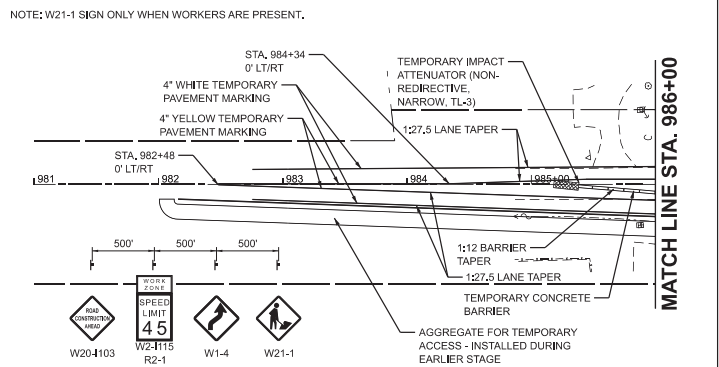
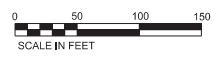
MODEL: ILL 150 - A001 Stage 3 Plan (2/24/24)
 FILE NAME: \\p01001001\proj\682861A\Drawings\DOT\Plan\682861A-110-01-IL4-150-A001-DOT-02.dwg - Sheet:DOT\682861A-110-01-IL4-150-A001-DOT-02.dwg

MATCH LINE STA. 986+00

MATCH LINE STA. 12+99.94



- STAGE 4**
- MAINTAIN IL 4 CLOSURE
 - KEEP ENTRANCE JUST SOUTHWEST OF THE INTERSECTION CLOSED, BUT MAINTAIN ACCESS FOR ALL OTHER ENTRANCES
 - RELOCATE TEMPORARY CONCRETE BARRIER FROM THE WESTBOUND LANE TO THE EASTBOUND LANE, 1' FROM THE EDGE OF THE EXISTING CENTERLINE
 - PLACE TEMPORARY CONCRETE BARRIER ON THE TEMPORARY PAVEMENT, 1' FROM THE EDGE OF PAVEMENT
 - KEEP THE WESTBOUND TRAFFIC ON THE TEMPORARY PAVEMENT AND SWITCH THE EASTBOUND TRAFFIC ONTO THE EASTBOUND LANE
 - CONSTRUCT THE WESTBOUND IL 150 LANE



	USER NAME	pwerner	DESIGNED	-	REVISED	-	7/22/2024	JRW
	DRAWN	-	CHECKED	-	REVIS	-		
	PLOT SCALE	0.166666633 / in.	DATE	-	REVISED	-		
	PLOT DATE	7/18/2024						

STATE OF ILLINOIS
DEPARTMENT OF TRANSPORTATION

FAP 682861A (IL 4150)
MAINTENANCE OF TRAFFIC - STAGE 4

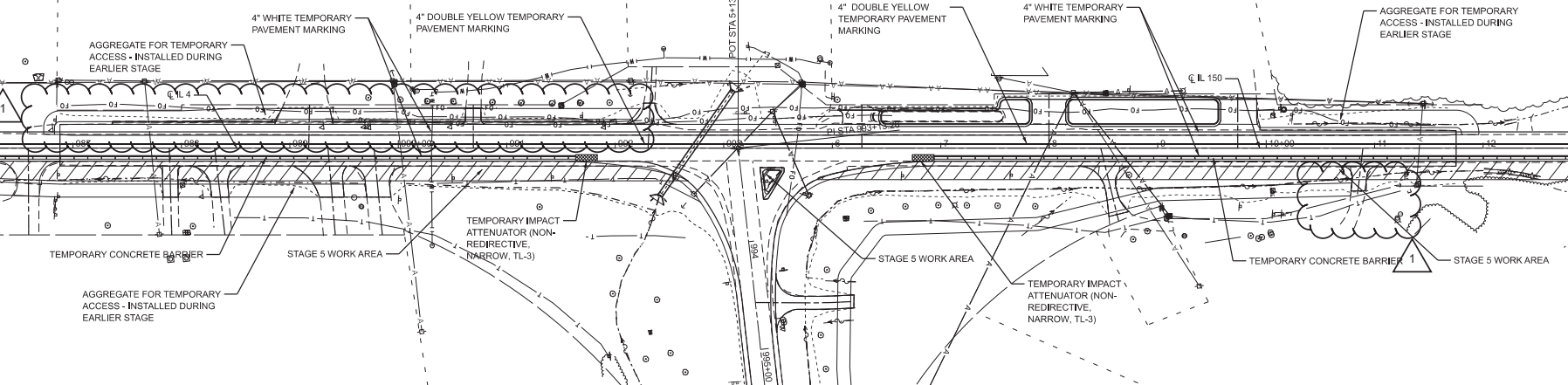
F.A.P. RTE.	SECTION	COUNTY	TOTAL SHEETS	SHEET NO.
	110,119NR-1	RANDOLPH	70	19
F.A.P. 682F.A.P. 881A			CONTRACT NO. 76M93	
ILLINOIS			FED. AID PROJECT	

SCALE: SHEET 8 OF 9 SHEETS STA. TO STA.

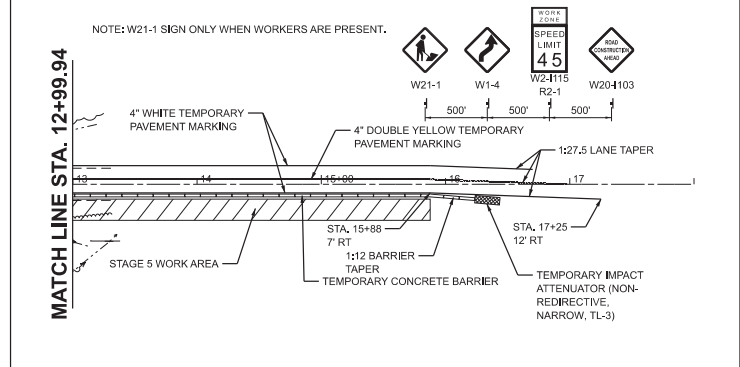
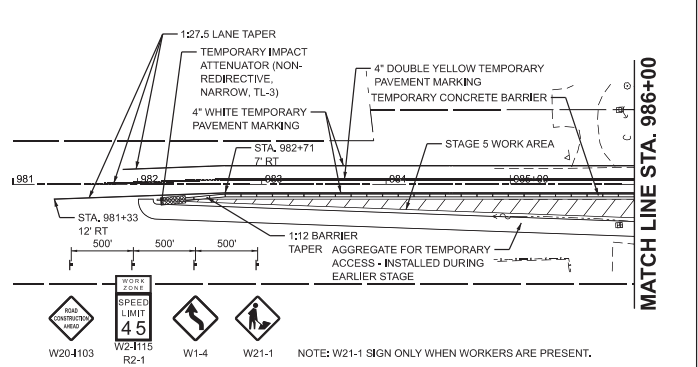
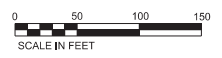
MODEL: IL 150, A007 Stage 4 Plan (2/24/24)
 FILE NAME: \\p01001001\projects\1101010150 IL 150 A007_STAGE 4_Plan\1101010150_IL 150 A007_STAGE 4_Plan.dwg
 PLOT DATE: 7/18/2024 10:45:11 AM

MATCH LINE STA. 986+00

MATCH LINE STA. 12+99.94



- STAGE 5**
- REOPEN IL 4
 - MAINTAIN ACCESS FOR ALL ENTRANCES
 - RELOCATE TEMPORARY CONCRETE BARRIER TO 1' FROM THE EDGE OF THE WESTBOUND LANE
 - SHIFT WESTBOUND TRAFFIC ONTO CONSTRUCTED WESTBOUND PAVEMENT AND KEEP EASTBOUND TRAFFIC ON THE EASTBOUND LANE
 - REMOVE TEMPORARY PAVEMENT AND CONSTRUCT SHOULDER ALONG THE WESTBOUND IL 150
 - CONSTRUCT SOUTHBOUND RIGHT-TURN ISLAND



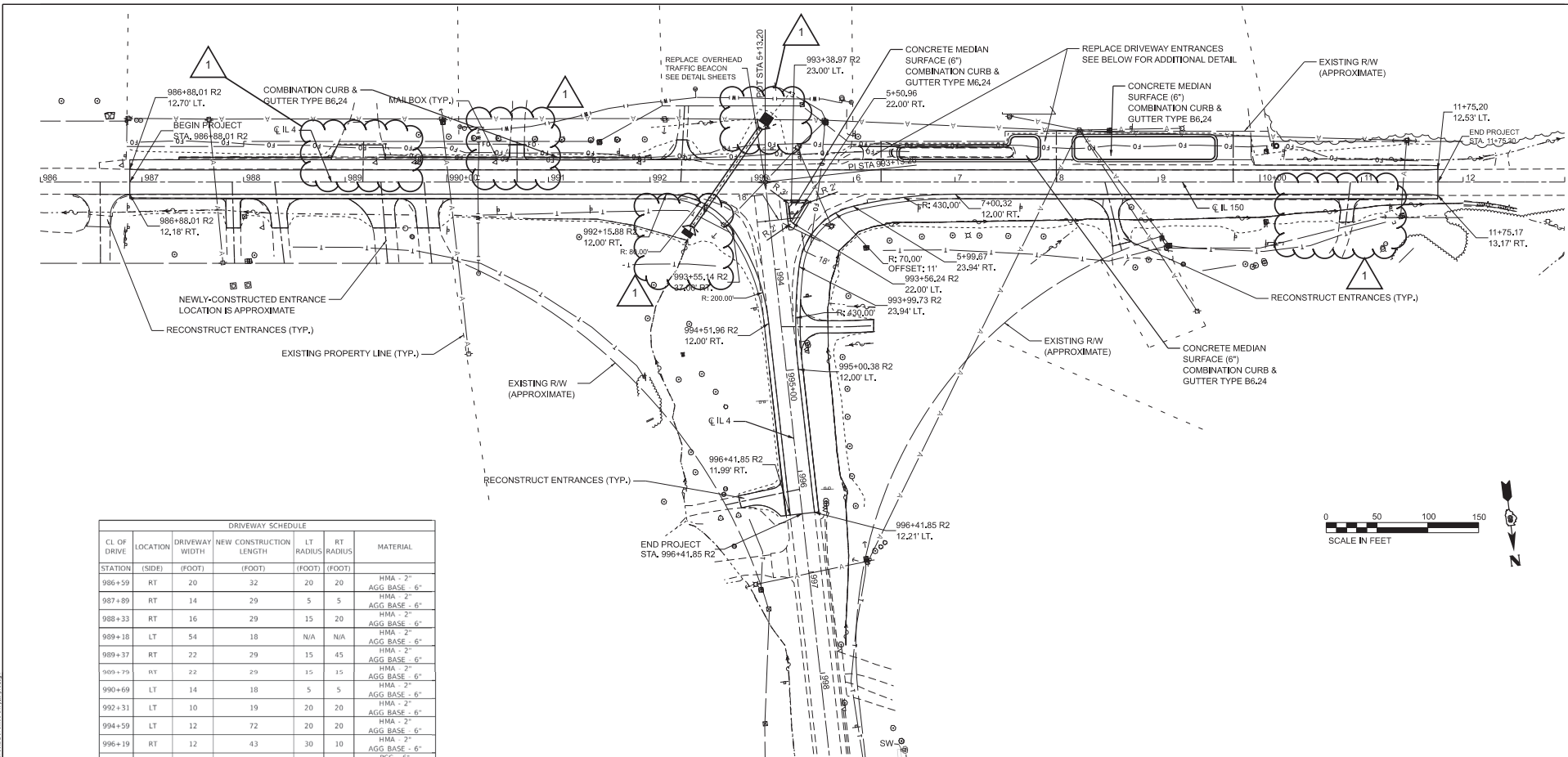
USER NAME	pwerner	DESIGNED	-	REVISED	-	7/22/2024	JRW
DRAWN	-	REVISED	-	DATE	-		
CHECKED	-	DATE	-				

STATE OF ILLINOIS
DEPARTMENT OF TRANSPORTATION

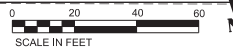
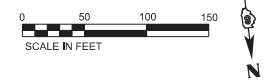
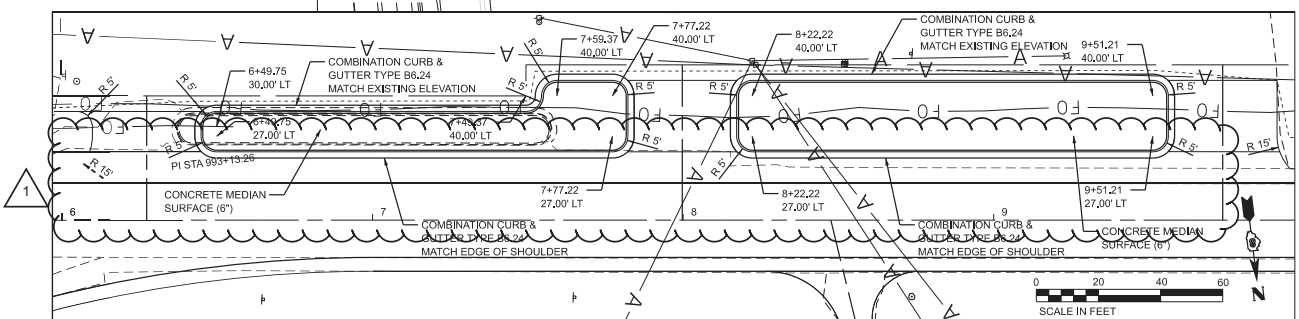
FAP 682/861A (IL 4150)
MAINTENANCE OF TRAFFIC - STAGE 5

F.A. RTE.	SECTION	COUNTY	TOTAL SHEETS	SHEET NO.
			20	9
*F.A.P. 682/F.A.P. 881A			CONTRACT NO.	
ILLINOIS			FED. AID PROJECT	

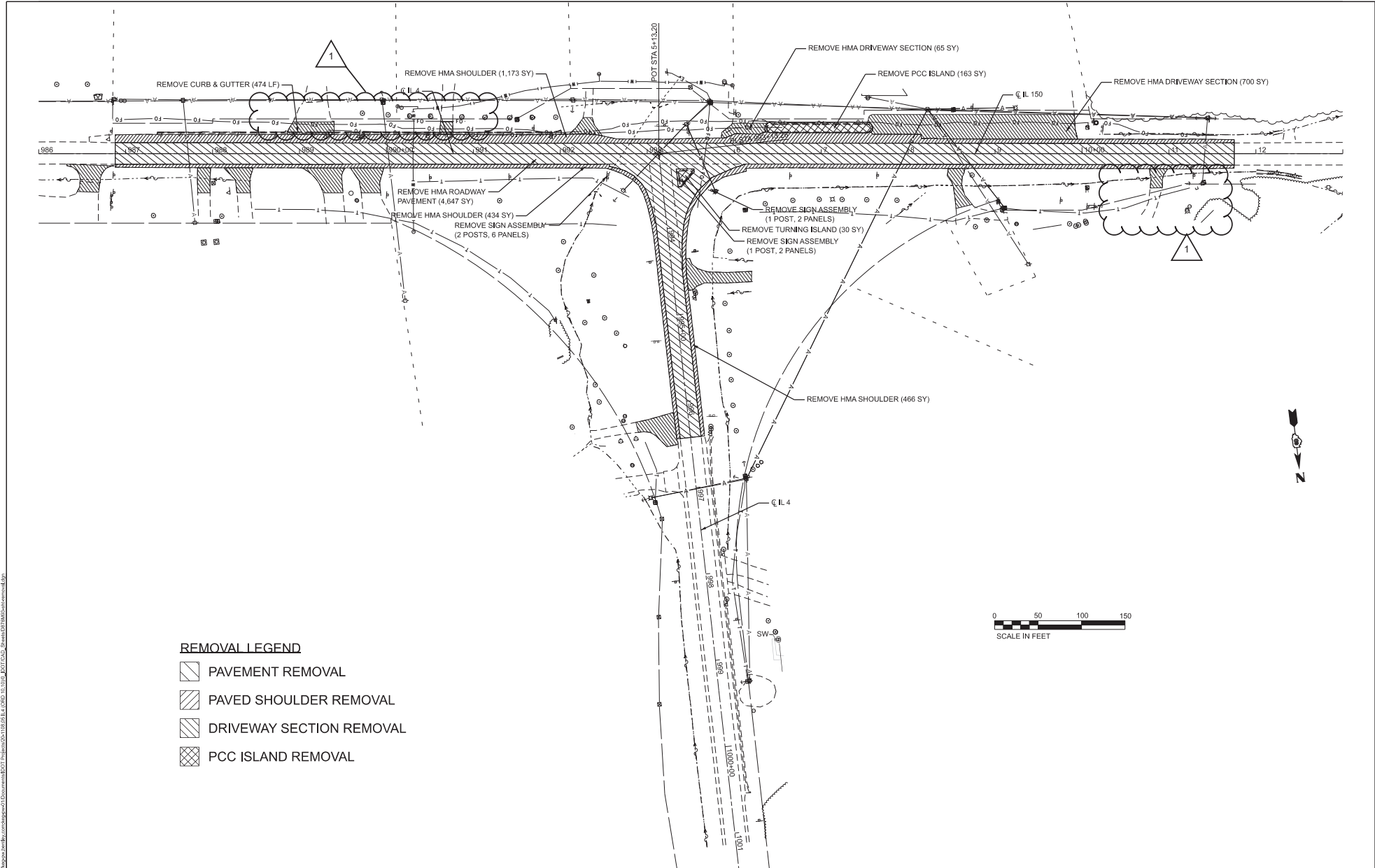
MODEL: IL 150 - MOU Stage 5 Plan (2/24/24)
 FILE NAME: \\p01\projects\2024\682\6821A\Drawings\DOT\Plan\6821A110105 IL4 (FAP) IL 150 - MOU Stage 5 Plan (2/24/24) - 8/24/24.dwg





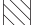

DRIVEWAY SCHEDULE						
CL OF DRIVE	LOCATION	DRIVEWAY WIDTH	NEW CONSTRUCTION LENGTH	LT RADIUS	RT RADIUS	MATERIAL
STATION	(SIDE)	(FOOT)	(FOOT)	(FOOT)	(FOOT)	
986+59	RT	20	32	20	20	HMA - 2" AGG BASE - 6"
987+09	RT	14	29	5	5	HMA - 2" AGG BASE - 6"
988+33	RT	16	29	15	20	HMA - 2" AGG BASE - 6"
989+10	LT	54	18	N/A	N/A	HMA - 2" AGG BASE - 6"
989+37	RT	22	29	15	45	HMA - 2" AGG BASE - 6"
989+75	RT	22	29	15	15	HMA - 2" AGG BASE - 6"
990+69	LT	14	18	5	5	HMA - 2" AGG BASE - 6"
992+31	LT	10	19	20	20	HMA - 2" AGG BASE - 6"
994+59	LT	12	72	20	20	HMA - 2" AGG BASE - 6"
996+19	RT	12	43	30	10	HMA - 2" AGG BASE - 6"
6+27	LT	35	15	15	5	SUBBASE TYPE A - 4" PCC - 6"
8+00	LT	35	25	5	5	SUBBASE TYPE A - 4" PCC - 6"
8+52	RT	10	46	15	25	HMA - 2" AGG BASE - 6"
9+74	LT	35	25	5	15	SUBBASE TYPE A - 4" PCC - 6"
10+87	RT	13	26	10	10	HMA - 2" AGG BASE - 6"



	USER NAME	pwerner	DESIGNED	-	REVISED	-	7/22/2024	STATE OF ILLINOIS DEPARTMENT OF TRANSPORTATION	FAP 682/861A (IL 4150) ROADWAY PLAN	F.A.P. R/E	SECTION	COUNTY	TOTAL SHEETS
	PLOT SCALE	0.166666633 / in.	DRAWN	-	REVISED	-	110,119NR-1			RANDOLPH	70	21	
	PLOT DATE	7/22/2024	CHECKED	-	REVISED	-	F.A.P. 682F.A.P. 881A			CONTRACT NO. 76M93			
			DATE	-	REVISED	-	SCALE: 1"=50'			SHEET 1	OF 2 SHEETS	STA.	TO STA.

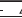


REMOVAL LEGEND

-  PAVEMENT REMOVAL
-  PAVED SHOULDER REMOVAL
-  DRIVEWAY SECTION REMOVAL
-  PCC ISLAND REMOVAL

MODEL: L:\150 - Removal Plan (Sheet)
 FILE NAME: 150 - Removal Plan - 7/18/2024 - 150 - Removal Plan (Sheet).dwg

Kaskaskia
 ENGINEERING CONSULTING, LLC

USER NAME	= jwerner	DESIGNED	-	REVISED	-  7/22/2024 JRW
DRAWN	-	CHECKED	-	REVISED	-
PLOT SCALE	= 0.16666667 / in.	DATE	-	REVISED	-
PLOT DATE	= 7/18/2024				

**STATE OF ILLINOIS
 DEPARTMENT OF TRANSPORTATION**

**FAP 682/861A (IL 4150)
 REMOVAL PLAN**

SCALE: SHEET 1 OF 1 SHEETS STA. TO STA.

F.A.P. RTE.	SECTION	COUNTY	TOTAL SHEETS	SHEET NO.
*	110,119NR-1	RANDOLPH	70	23
*F.A.P. 682F.A.P. 861A			CONTRACT NO. 76M93	
ILLINOIS			FED. AID PROJECT	

MODEL: IL 150 - Drainage Plan (Sheet)
FILE NAME: \\p01hpc002\proj\2024\682\FAP\881A\Drawings\682-FAP-881A-110-119NR-1.dwg



USER NAME: jwerner
DESIGNED: -
DRAWN: -
PLOT SCALE: 0.18669833 / ft.
PLOT DATE: 7/22/2024

CHECKED: -
DATE: -

REVISED: - 7/22/2024 JRW
REVISED: -
REVISED: -
REVISED: -

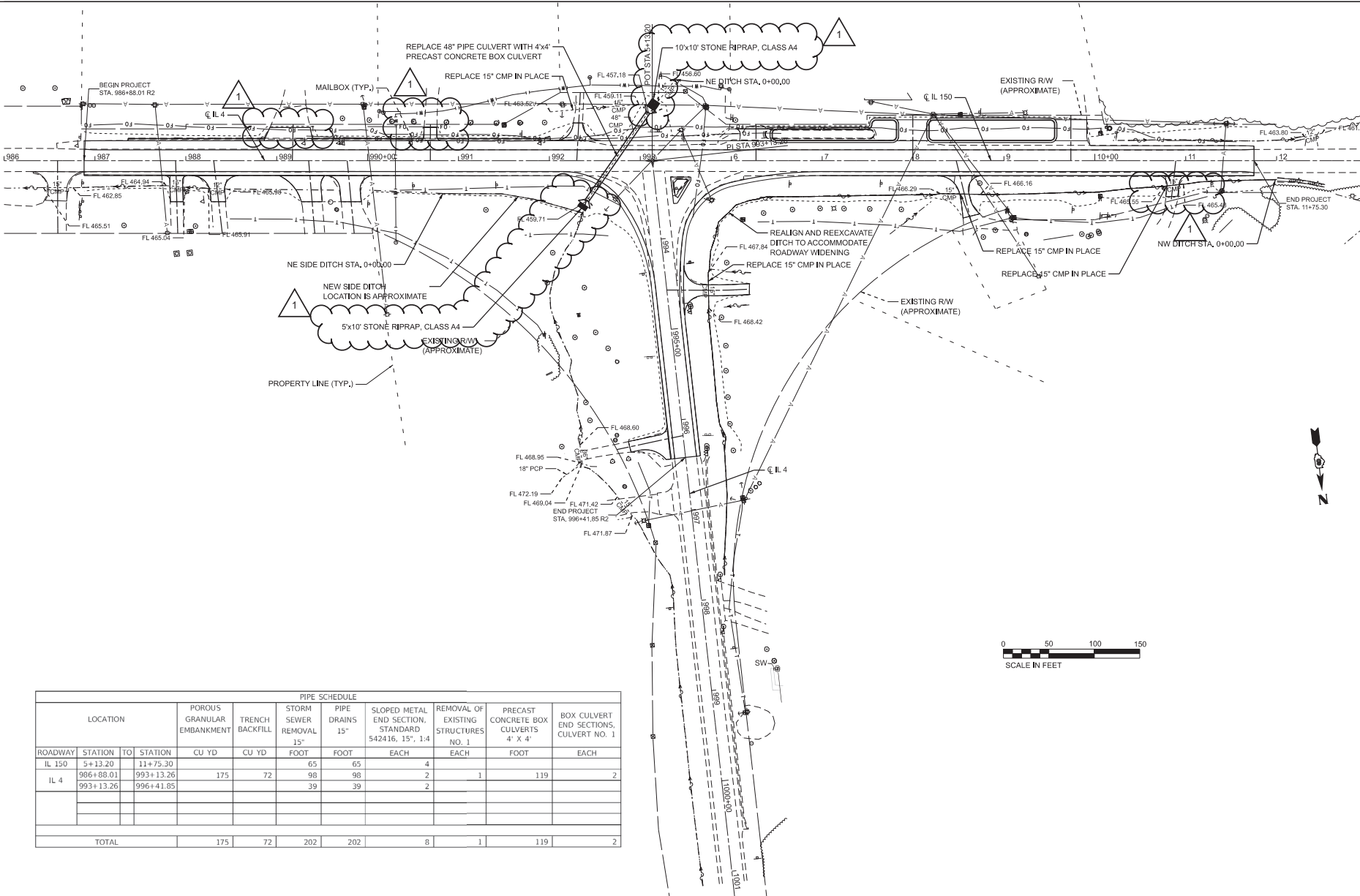
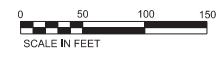
**STATE OF ILLINOIS
DEPARTMENT OF TRANSPORTATION**

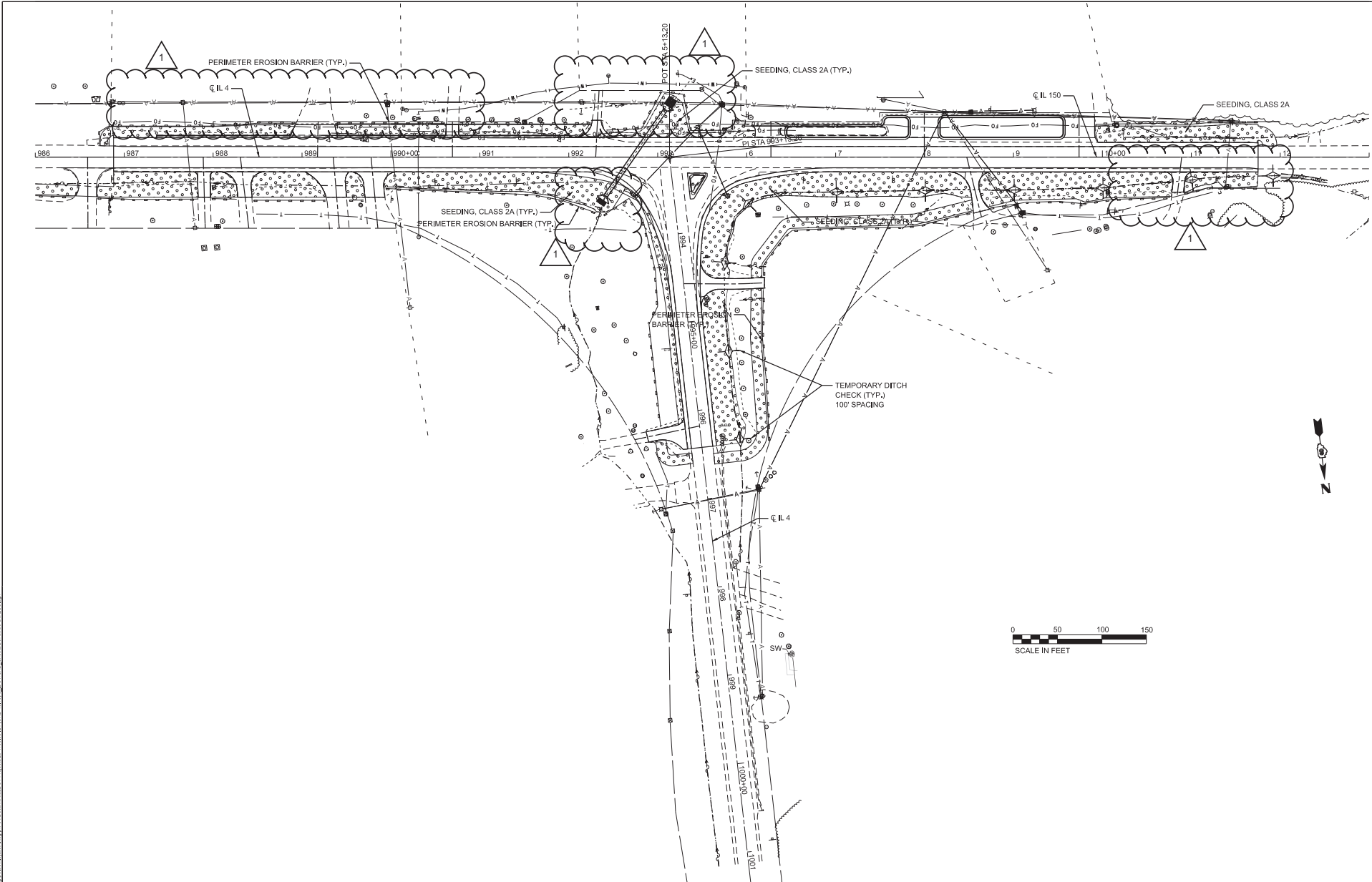
**FAP 682/861A (IL 4150)
DRAINAGE PLAN**

SCALE: SHEET 1 OF 2 SHEETS STA. TO STA.

F.A.P. RTE:	SECTION	COUNTY	TOTAL SHEETS
*	110,119NR-1	RANDOLPH	70 24
*F.A.P. 682/F.A.P. 881A			CONTRACT NO. 76M93
ILLINOIS		FED. AID PROJECT	

PIPE SCHEDULE											
LOCATION			POROUS GRANULAR EMBANKMENT	TRENCH BACKFILL	STORM SEWER REMOVAL 15"	PIPE DRAINS 15"	SLOPED METAL END SECTION, STANDARD 542416, 15", 1:4	REMOVAL OF EXISTING STRUCTURES NO. 1	PRECAST CONCRETE BOX CULVERTS 4' X 4'	BOX CULVERT END SECTIONS, CULVERT NO. 1	
ROADWAY	STATION	TO STATION	CU YD	CU YD	FOOT	FOOT	EACH	EACH	FOOT	EACH	
IL 150	5+13.20	11+75.30			65	65	4				
IL 4	986+88.01	993+13.26	175	72	98	98	2	1	119	2	
	993+13.26	996+41.85			39	39	2				
TOTAL			175	72	202	202	8	1	119	2	





MODEL: L:\19 - ESD Plan (24x4)
 FILE NAME: 190322024.dwg
 PROJECT: I:\Projects\2024\682F.A.P. 881A\Drawings\682F.A.P. 881A\682F.A.P. 881A\682F.A.P. 881A.dwg
 USER: jwerner
 DATE: 7/22/2024

Kaskaskia
 ENGINEERING GROUP, LLC
 201 S. Third Street, Suite 200
 Macomb, Illinois 61455
 Phone: 618-245-1100
 Fax: 618-245-1101
 Email: info@kaskaskiaeng.com

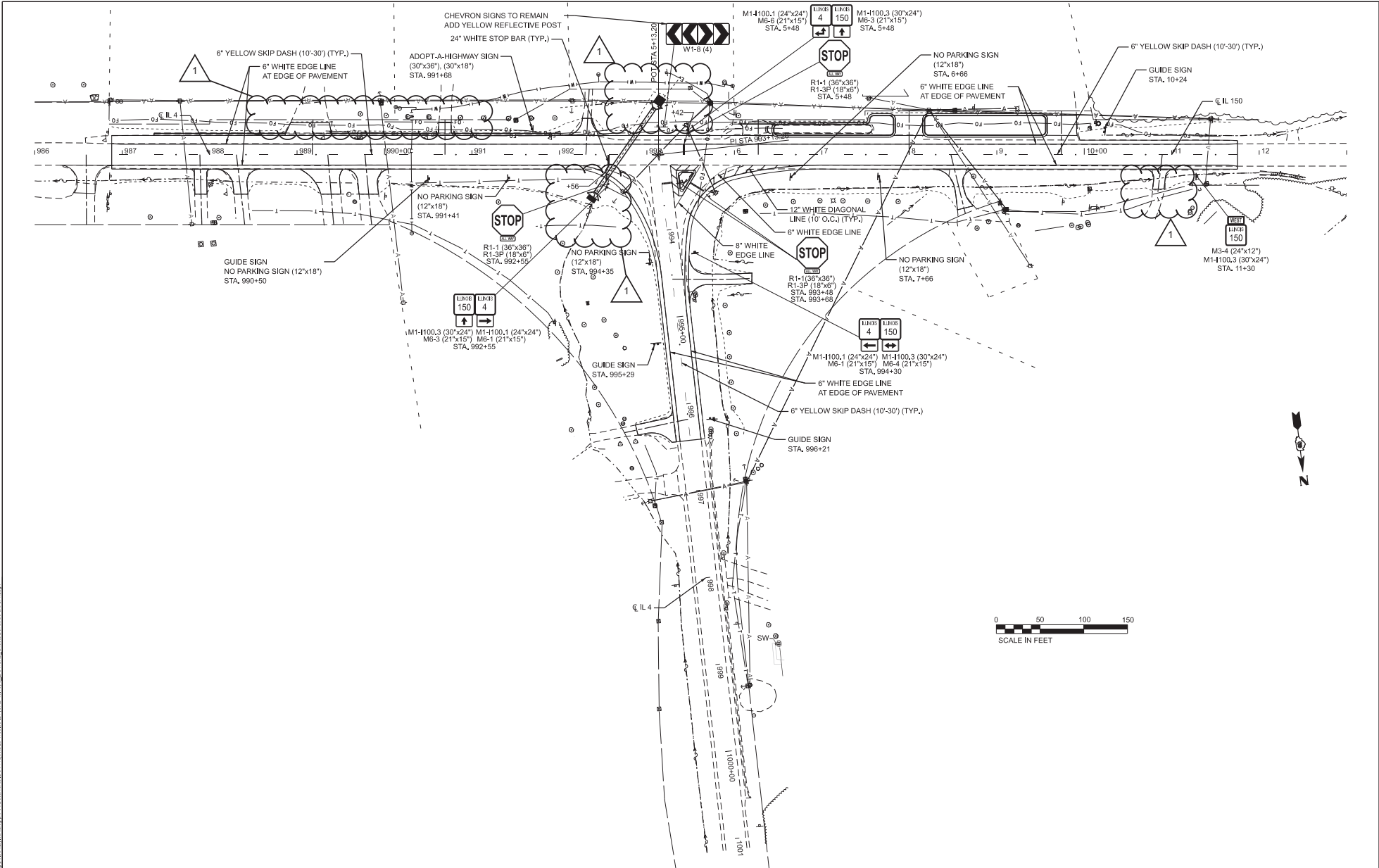
USER NAME	jwerner	DESIGNED	-	REVISED	-	7/22/2024	JRW
DRAWN	-	CHECKED	-	REVISED	-		
PLOT SCALE	0.166666667 in.	DATE	-	REVISED	-		
PLOT DATE	7/22/2024						

STATE OF ILLINOIS
DEPARTMENT OF TRANSPORTATION

FAP 682/861A (IL 4150)
EROSION CONTROL PLAN

SCALE:	SHEET 1	OF	SHEETS	STA.	TO STA.
--------	---------	----	--------	------	---------

F.A. RTE.	SECTION	COUNTY	TOTAL SHEETS	SHEET NO.
				26
*F.A.P. 682F.A.P. 881A			CONTRACT NO.	
ILLINOIS			FED. AID PROJECT	



MODEL: I:\10 - FAP\1012\1012.dwg
 FILE NAME: I:\1012\1012.dwg
 PLOT DATE: 7/22/2024 10:10:10 AM
 PLOT SCALE: 1/8"=1'-0"



USER NAME	rwerner	DESIGNED	-	REVISED	-	7/22/2024	JRW
DRAWN	-	CHECKED	-	REVISED	-		
PLOT SCALE	0.166666667 / in.	DATE	-	REVISED	-		
PLOT DATE	7/22/2024						

STATE OF ILLINOIS
DEPARTMENT OF TRANSPORTATION

FAP 682861A (IL 4150)
SIGNING AND PAVEMENT MARKING PLAN

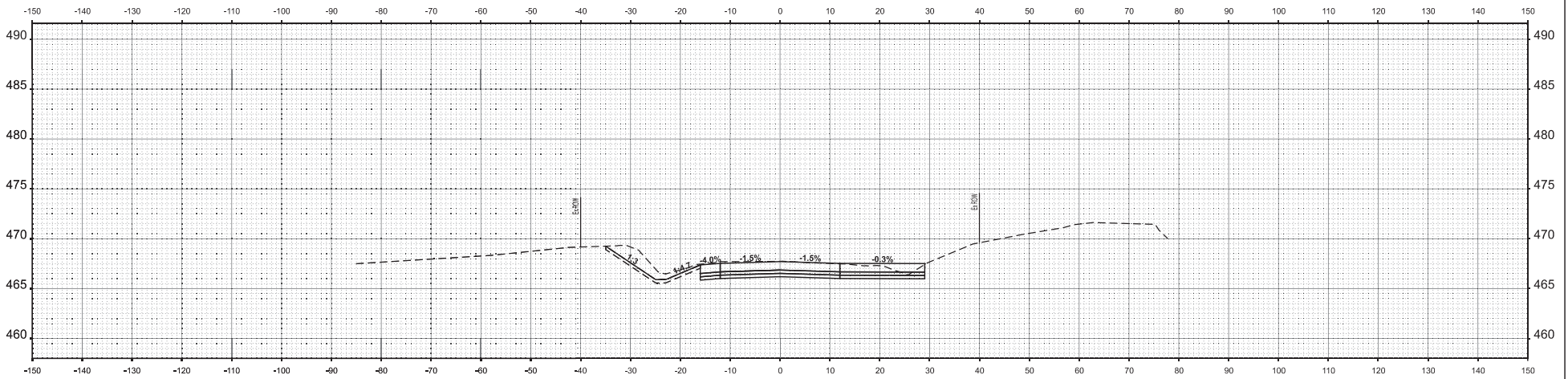
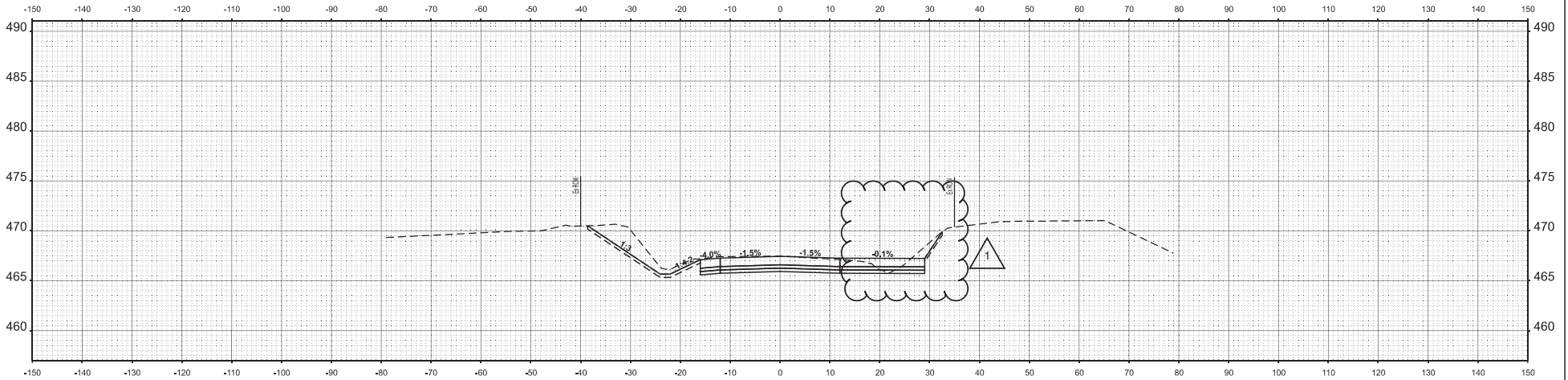
SCALE:	SHEET 1	OF	SHEETS	MARKING	STA.	TO STA.
--------	---------	----	--------	---------	------	---------

F.A. RTE.	SECTION	COUNTY	TOTAL SHEETS	SHEET NO.
*F.A.P. 682F.A.P. 881A				27
CONTRACT NO.				
ILLINOIS			FED. AID PROJECT	

TEMPORARY CROSS SECTIONS

DATE	
BY	
DESIGNED BY	
DRAWN BY	
CHECKED BY	
DATE	

DATE	
BY	
DESIGNED BY	
DRAWN BY	
CHECKED BY	
DATE	



K:\Projects\110-118-Sub-A-11+00.00\11000.dwg
 FILE NAME: 110-118-Sub-A-11+00.00.dwg
 PLOT DATE: 7/22/2024



USER NAME	rwerner
PLOT SCALE	0.18669833 / in.
PLOT DATE	7/22/2024

DESIGNED	-
DRAWN	-
CHECKED	-
DATE	-

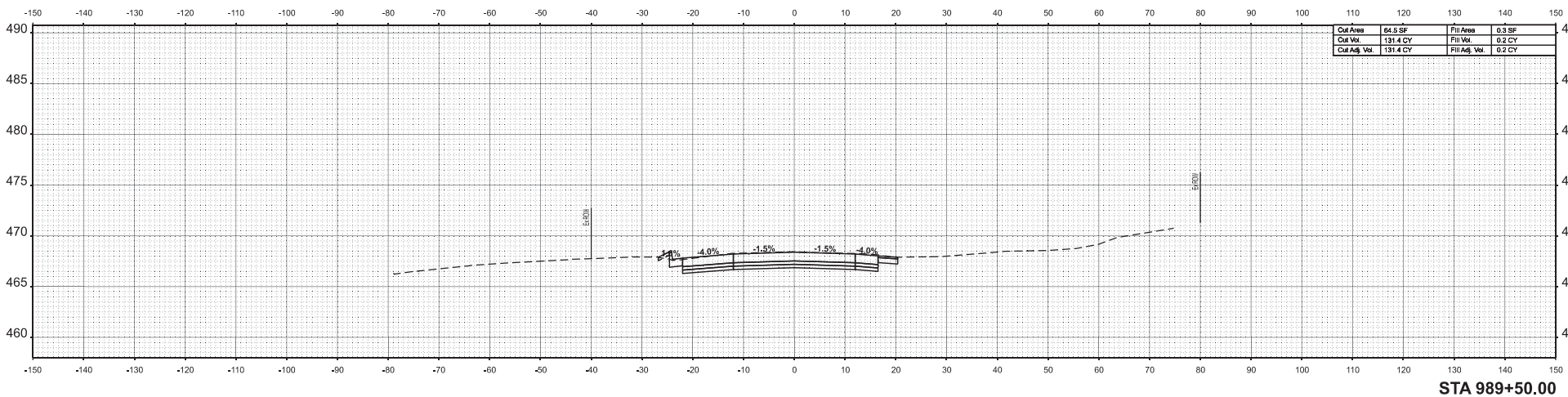
REVISED	-	7/22/2024	JRW
REVISED	-		
REVISED	-		
REVISED	-		

**STATE OF ILLINOIS
DEPARTMENT OF TRANSPORTATION**

FAP 682/861A (IL 4150)			
TEMPORARY CROSS SECTIONS			
SCALE: 1"=10'	SHEET 13	OF 13 SHEETS	STA. TO STA.

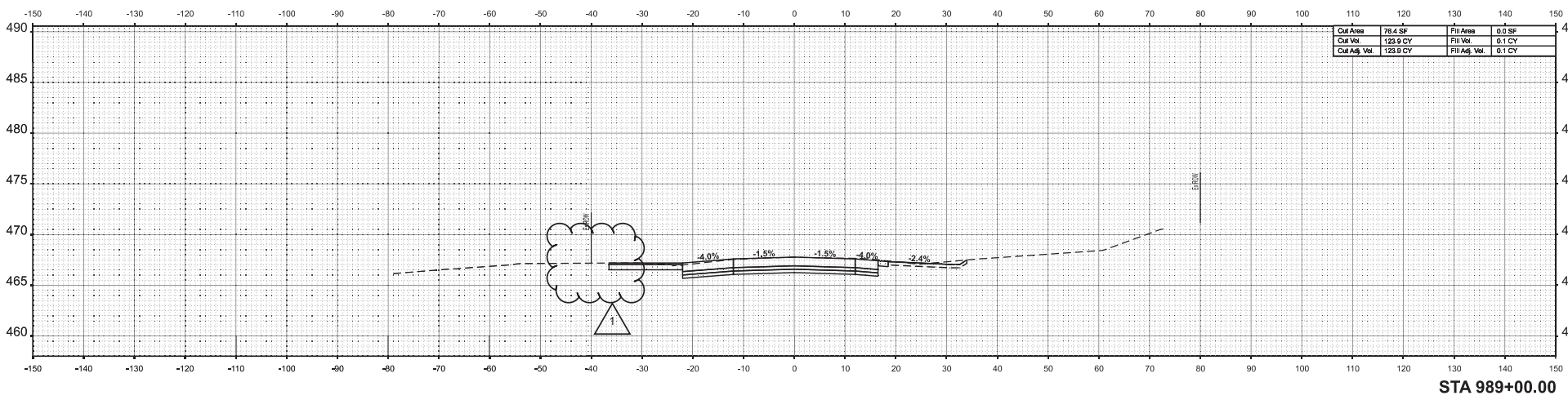
F.A.P. RTE.	SECTION	COUNTY	TOTAL SHEETS	SHEET NO.
*	110,118NR-1	RANDOLPH	70	48
*F.A.P. 682/F.A.P. 861A			CONTRACT NO. 76M93	
ILLINOIS		FED. AID PROJECT		

DATE	
BY	
DESIGNED BY	
DRAWN BY	
CHECKED BY	
DATE	



STA 989+50.00

DATE	
BY	
DESIGNED BY	
DRAWN BY	
CHECKED BY	
DATE	



STA 989+00.00



USER NAME	rwerner	DESIGNED	-	REVISED	-	7/22/2024 JRW
DRAWN		CHECKED		REVISED		
PLOT SCALE	0.1666666337 / in.	DATE		REVISED		
PLOT DATE	7/22/2024					

STATE OF ILLINOIS
DEPARTMENT OF TRANSPORTATION

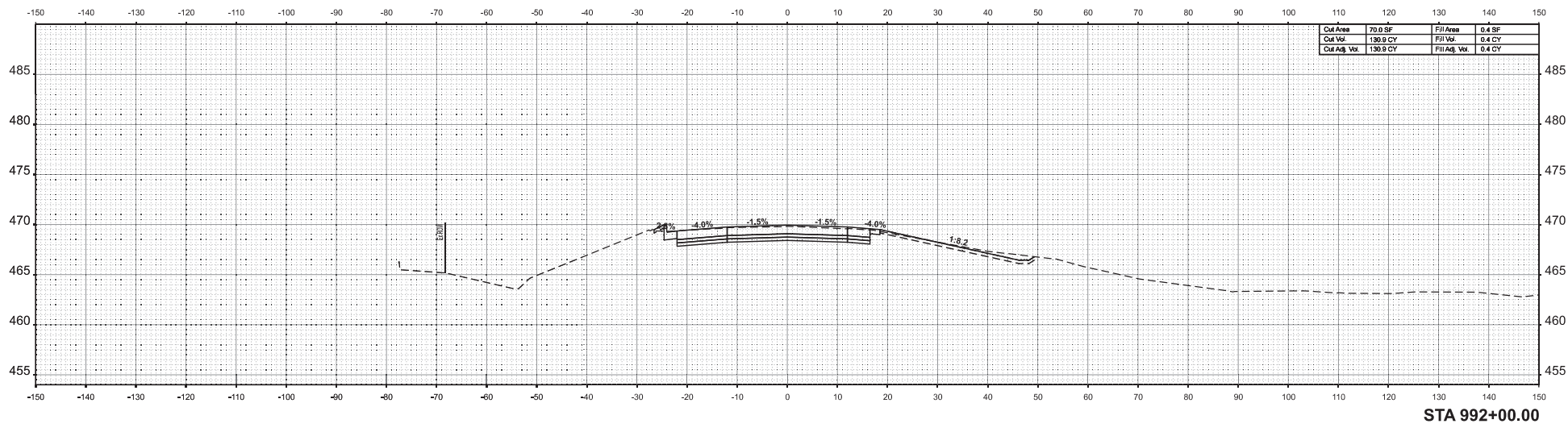
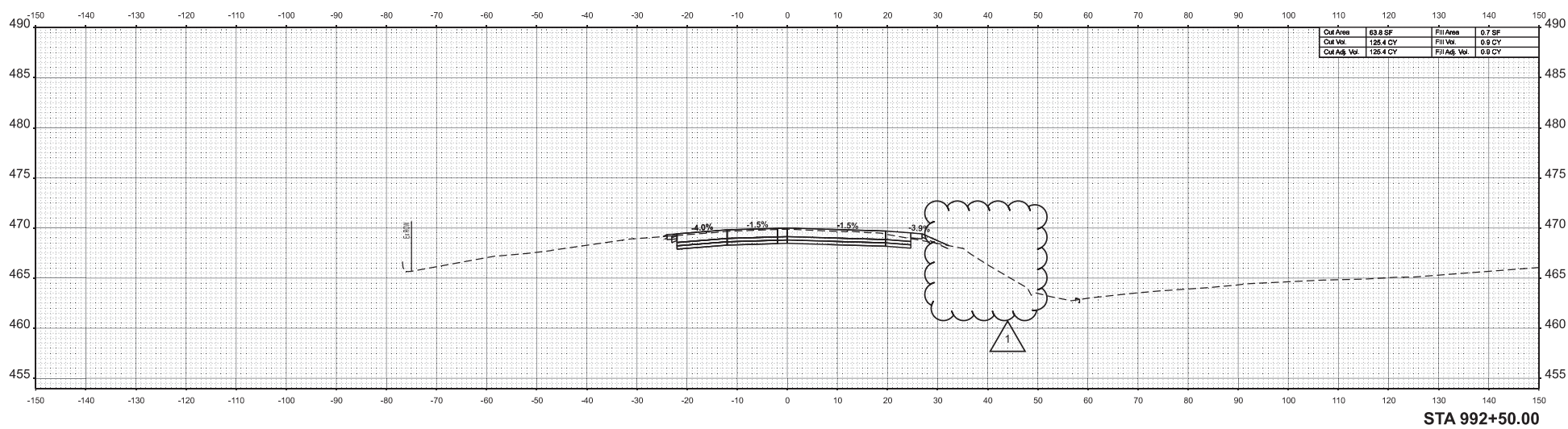
FAP 682/861A (IL 4150)
CROSS SECTIONS


SCALE: 1"=10' SHEET 3 OF 22 SHEETS STA. TO STA.

F.A.P. RTE.	SECTION	COUNTY	TOTAL SHEETS	SHEET NO.
	110,119NR-1	RANDOLPH	70	51
F.A.P. 682/F.A.P. 881A			CONTRACT NO. 76M93	
ILLINOIS		FED. AID PROJECT		

DATE	
BY	
DESIGNED BY	
DRAWN BY	
CHECKED BY	
DATE	

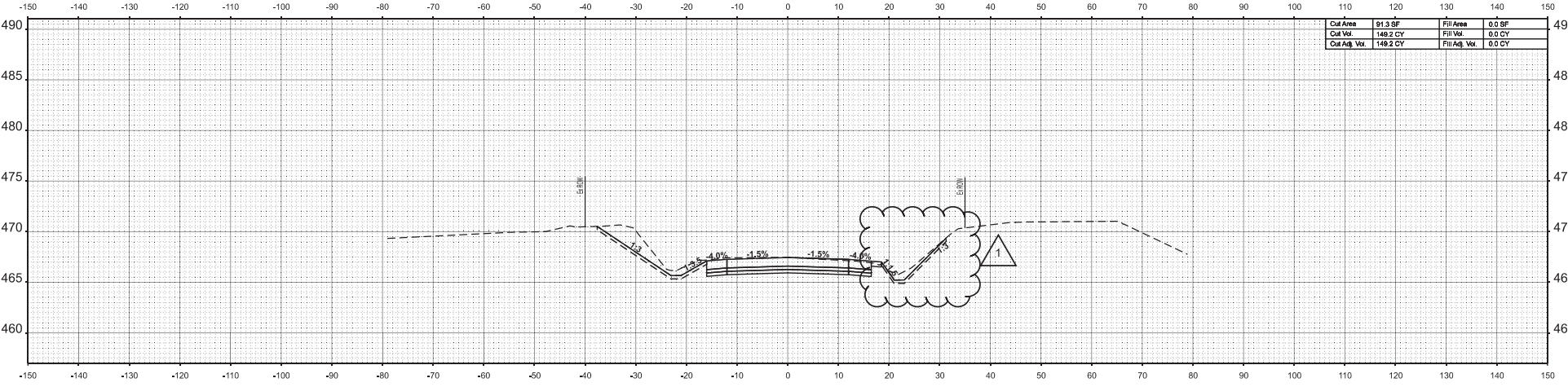
DATE	
BY	
DESIGNED BY	
DRAWN BY	
CHECKED BY	
DATE	



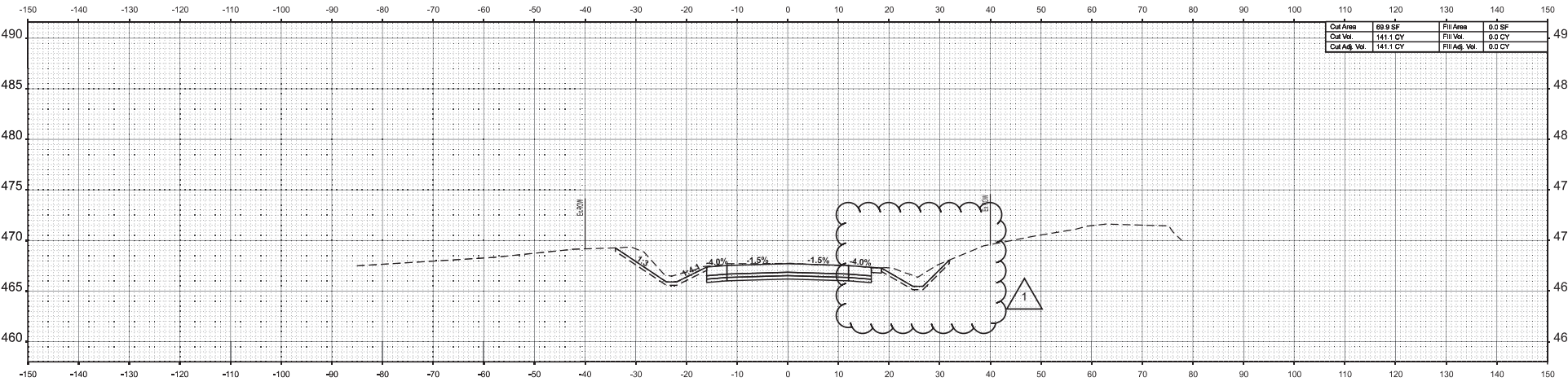
	USER NAME: jwerner PLOT SCALE: 0.18669833 / in. PLOT DATE: 7/22/2024	DESIGNED: - DRAWN: - CHECKED: - DATE: -	REVISED: - Δ 7/22/2024 JRW REVISED: - REVISED: - REVISED: -	STATE OF ILLINOIS DEPARTMENT OF TRANSPORTATION	FAP 682/861A (IL 4150) CROSS SECTIONS	F.A.P. SECTION: 110,119NR-1 COUNTY: RANDOLPH CONTRACT NO.: 76M93	TOTAL SHEETS: 70 SHEETS NO.: 54
	SCALE: 1"=10' SHEET 6 OF 22 SHEETS STA. TO STA.				ILLINOIS FED. AID PROJECT		

DATE	
BY	
DESIGNED BY	
DRAWN BY	
CHECKED BY	
DATE	

DATE	
BY	
DESIGNED BY	
DRAWN BY	
CHECKED BY	
DATE	



STA 11+50.00



STA 11+00.00



USER NAME	jwerner
PLOT SCALE	0.1666666667 / in.
PLOT DATE	7/22/2024

DESIGNED	-
DRAWN	-
CHECKED	-
DATE	-

REVISED	-	7/22/2024	JRW
REVISED	-		
REVISED	-		
REVISED	-		

STATE OF ILLINOIS
DEPARTMENT OF TRANSPORTATION

FAP 682/861A (IL 4150)
CROSS SECTIONS

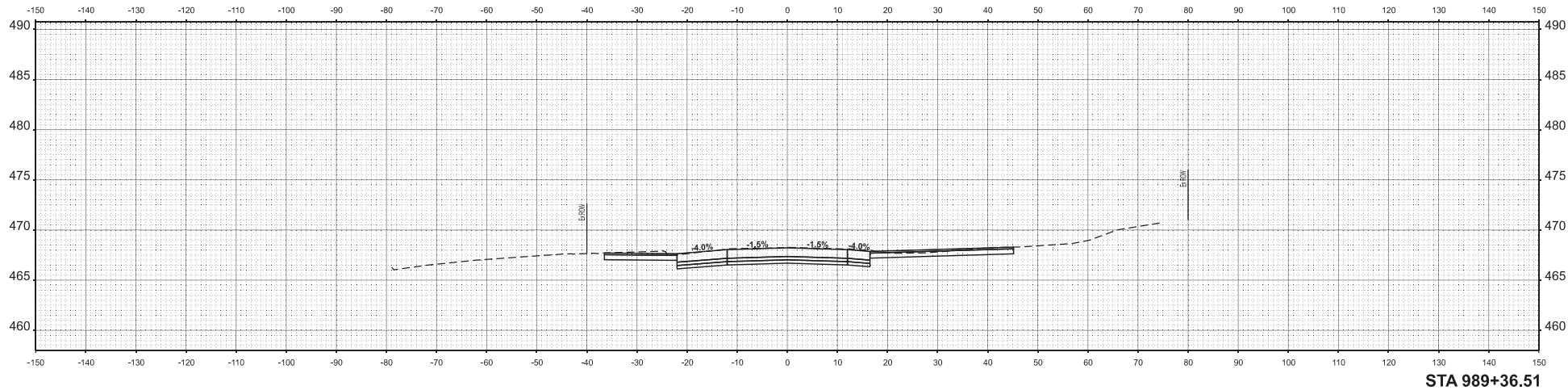
SCALE: 1"=10'	SHEET 15	OF 22 SHEETS	STA.	TO STA.
---------------	----------	--------------	------	---------

F.A.P. RTE.	SECTION	COUNTY	TOTAL SHEETS	SHEET NO.
*	110,119NR-1	RANDOLPH	70	63
*F.A.P. 682/F.A.P. 881A				CONTRACT NO. 76M93
ILLINOIS				FED. AID PROJECT

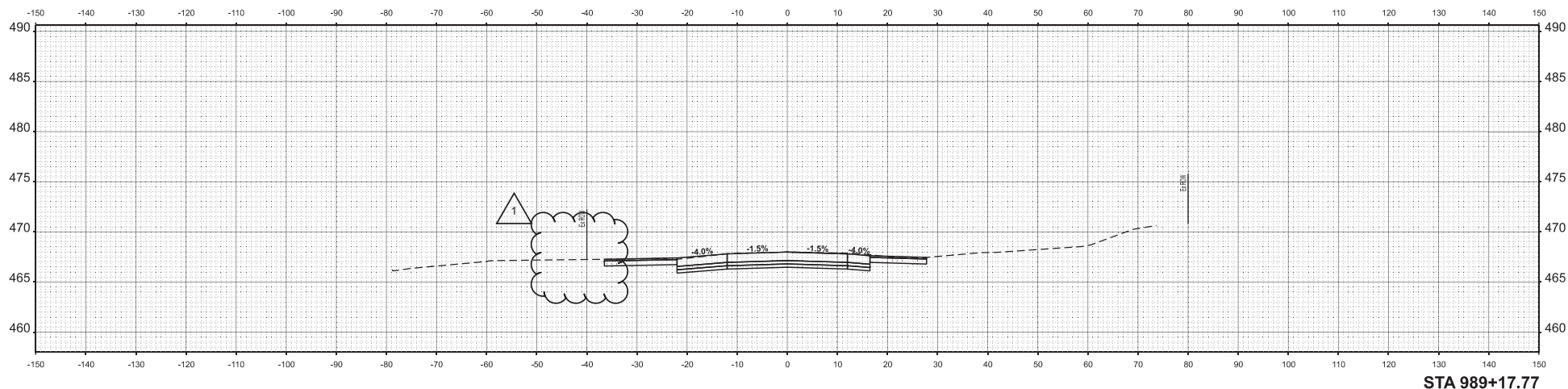
DATE	
BY	
DESIGNED BY	
DRAWN BY	
CHECKED BY	
DATE	

DATE	
BY	
DESIGNED BY	
DRAWN BY	
CHECKED BY	
DATE	

PROJECT: ILLINOIS - 682F.A.P. 881A
 FILE NAME: \\p01eng01\proj\682F.A.P. 881A\DOT\Drawings\DOT\110\110NR-1\110NR-1_17.77_CAD.dwg
 DATE PLOTTED: 7/22/2024 10:58:53 AM



STA 989+36.51



STA 989+17.77

USER NAME: jwerner	DESIGNED: -	REVISED: -	7/22/2024 JRW
PLOT SCALE: 1"=10'	DRAWN: -	REVISED: -	
PLOT DATE: 7/22/2024	CHECKED: -	REVISED: -	
	DATE: -	REVISED: -	

**STATE OF ILLINOIS
DEPARTMENT OF TRANSPORTATION**

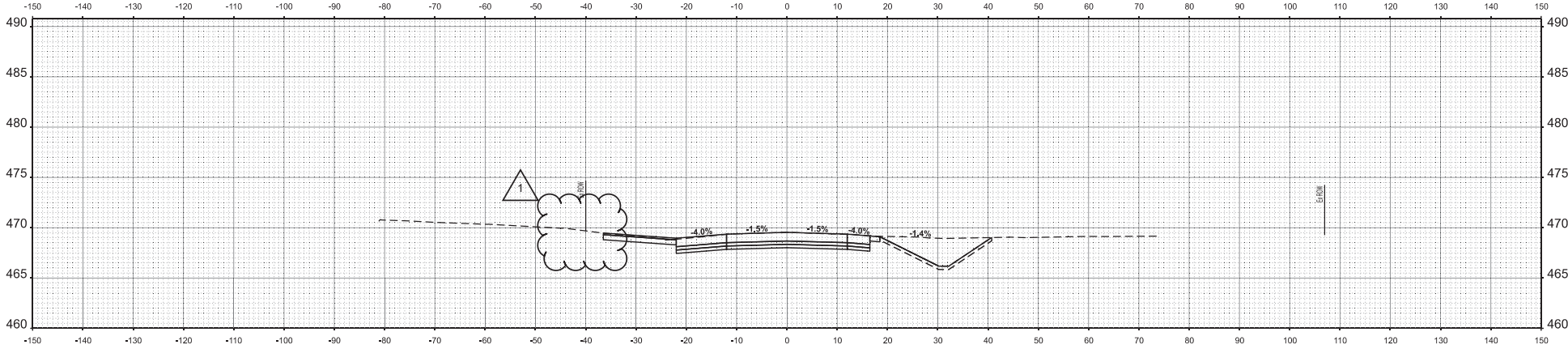
FAP 682/861A (IL 4150)			
CROSS SECTIONS			
SCALE: 1"=10'	SHEET 17	OF 22 SHEETS	STA. TO STA.

F.A.P. RTE.	SECTION	COUNTY	TOTAL SHEETS	SHEET NO.
*	110,119NR-1	RANDOLPH	70	65
*F.A.P. 682F.A.P. 881A			CONTRACT NO. 76M93	
ILLINOIS		FED. AID PROJECT		

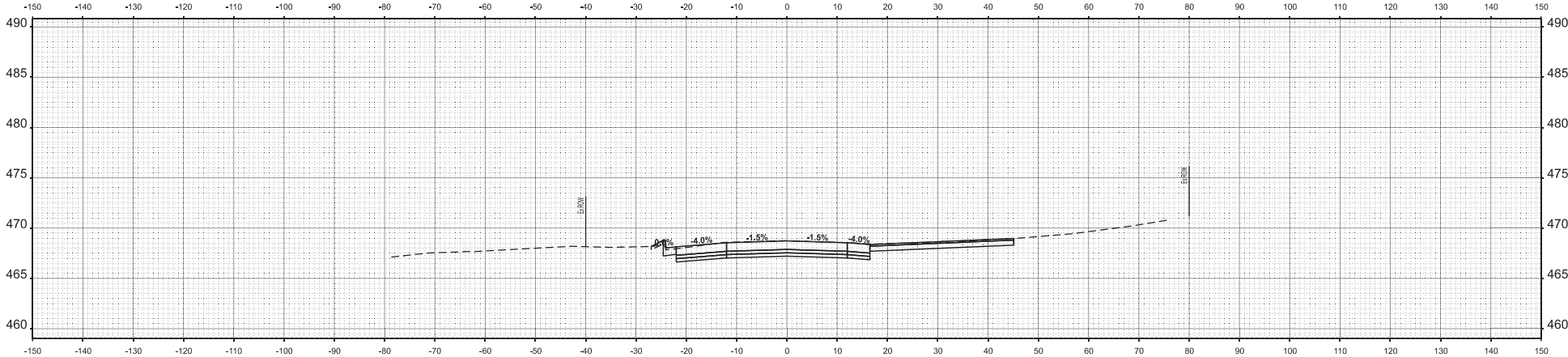
DATE	
BY	
DESIGNED	
DRAWN	
CHECKED	
DATE	
BY	
DESIGNED	
DRAWN	
CHECKED	
DATE	
BY	
DESIGNED	
DRAWN	
CHECKED	
DATE	
BY	
DESIGNED	
DRAWN	
CHECKED	
DATE	
BY	
DESIGNED	
DRAWN	
CHECKED	
DATE	

DATE	
BY	
DESIGNED	
DRAWN	
CHECKED	
DATE	
BY	
DESIGNED	
DRAWN	
CHECKED	
DATE	
BY	
DESIGNED	
DRAWN	
CHECKED	
DATE	
BY	
DESIGNED	
DRAWN	
CHECKED	
DATE	

MPXFILE: F:\190_08\190_08\190_08.dwg
 PLOT SCALE: 0.18666667
 PLOT DATE: 7/22/2024



STA 990+69.06



STA 989+79.11

USER NAME: jwerner	DESIGNED: -	REVISED: -	7/22/2024 JRW
PLOT SCALE: 0.18666667 / in.	DRAWN: -	REVISED: -	
PLOT DATE: 7/22/2024	CHECKED: -	REVISED: -	
	DATE: -	REVISED: -	

**STATE OF ILLINOIS
DEPARTMENT OF TRANSPORTATION**

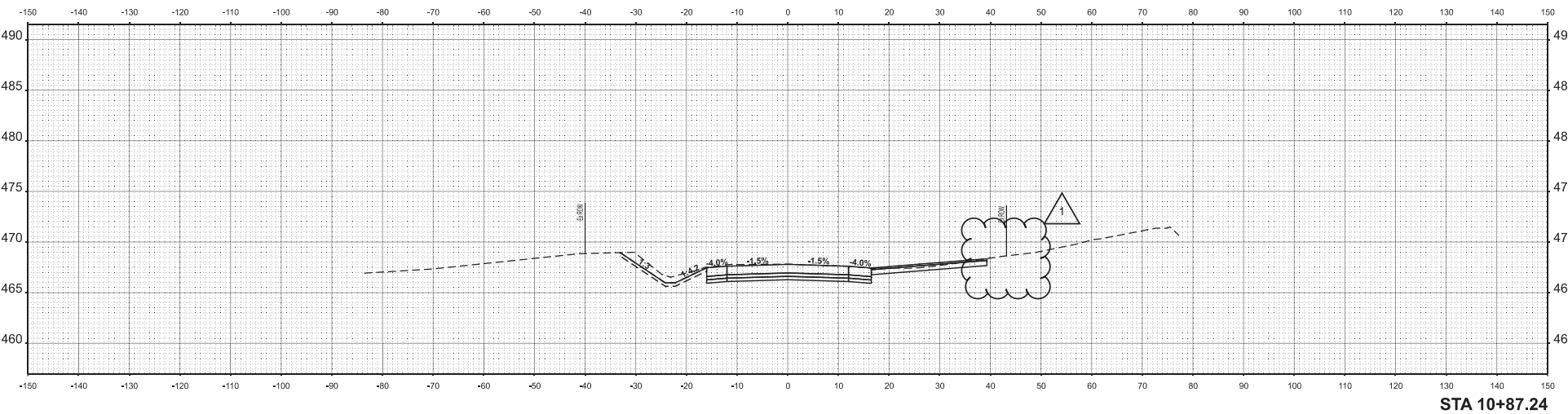
**FAP 682/861A (IL 4150)
CROSS SECTIONS**

SCALE: 1"=10' SHEET 18 OF 22 SHEETS STA. TO STA.

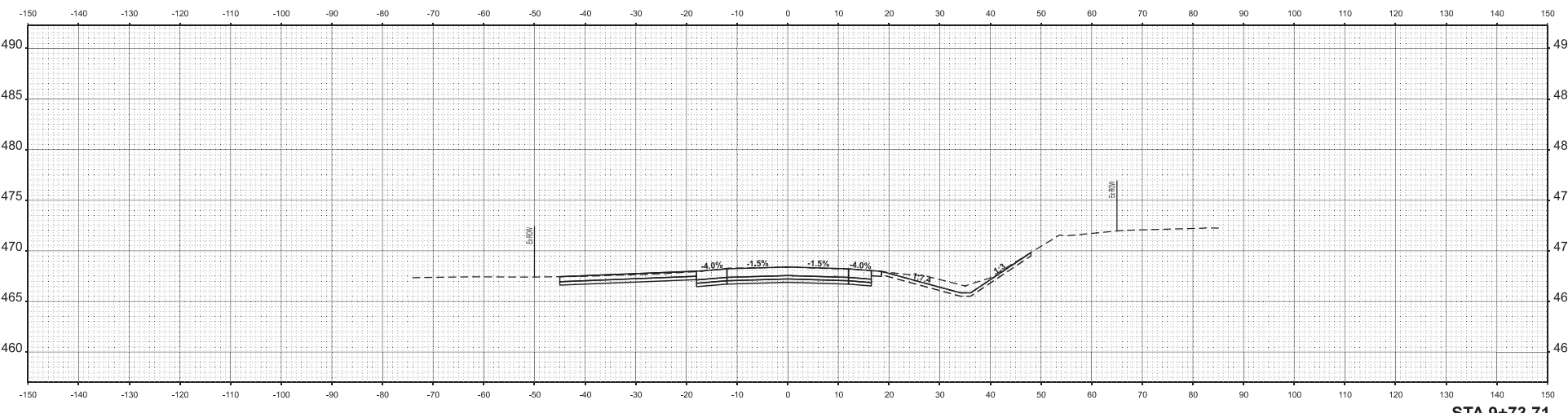
F.A.P. RTE:	SECTION	COUNTY	TOTAL SHEETS	SHEET NO.
*	110,119NR-1	RANDOLPH	70	66
F.A.P. 682/F.A.P. 881A				CONTRACT NO. 76M93
ILLINOIS		FED. AID PROJECT		

DATE	BY

DATE	BY



STA 10+87.24



STA 9+73.71

USER NAME	Designer	DESIGNED	-	REVISED	-	7/22/2024 JRW
PLOT SCALE	0.1666666667 / in.	DRAWN	-	REVISED	-	
PLOT DATE	7/22/2024	CHECKED	-	REVISED	-	
		DATE	-	REVISED	-	

STATE OF ILLINOIS
DEPARTMENT OF TRANSPORTATION

FAP 682/861A (IL 4150)
CROSS SECTIONS

SCALE: 1"=10' SHEET 22 OF 22 SHEETS STA. TO STA.

F.A.P. RTE.	SECTION	COUNTY	TOTAL SHEETS	SHEET NO.
*	110,118NR-1	RANDOLPH	70	70
*F.A.P. 682 F.A.P. 881A				CONTRACT NO. 76M93
ILLINOIS		FED. AID PROJECT		

MFC 11.4 190 - D:\temp\proj\731\86060...
 FILE NAME: c:\temp\proj\731\86060...