

STATE OF ILLINOIS
DEPARTMENT OF TRANSPORTATION

F.A.P. RTE	SECTION	COUNTY	TOTAL SHEETS	SHEET NO
726	129X-2,130)RS-6	WILLIAMSON	35	1
ILLINOIS			CONTRACT NO. 78978	

FOR INDEX OF SHEETS, SEE SHEET NO. 3
FOR SUMMARY OF QUANTITIES, SEE SHEET NO. 5-9

PROPOSED HIGHWAY PLANS

FAP ROUTE 726 (IL 148)
SECTION (129X-2,130)RS-6
PROJECT NHPP-H3VV(773)
HMA RESURFACING
WILLIAMSON COUNTY

C-99-023-23

TRAFFIC DATA

IL 148 TRAFFIC DATA
2021 = 16,400 WITH 4% TRUCKS

TOWNSHIPS

HERRIN

IMPROVEMENT ENDS
STA 305 + 00
HERRIN STREET

IMPROVEMENT BEGINS
STA 230 + 89
HEMLOCK STREET

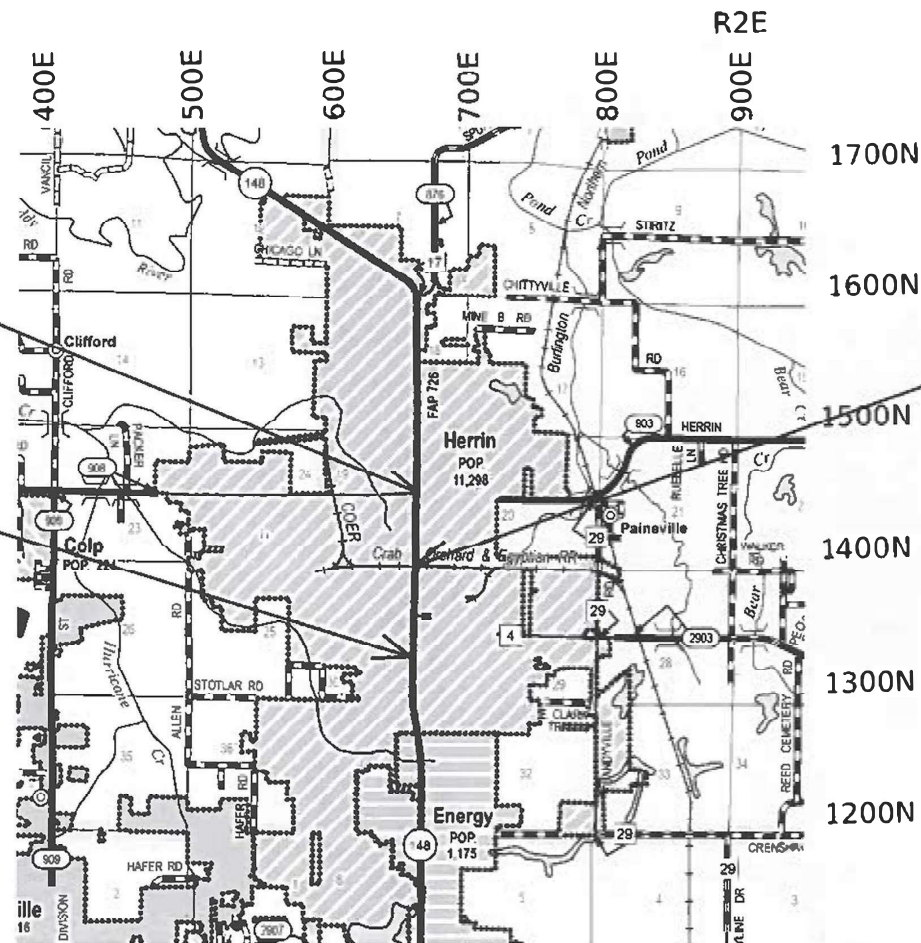
COORDINATE SYSTEM : EPSG: 102671
NAD 1983 STATE PLANE ILLINOIS EAST FIPS 1201 FEET

POSTED SPEED : 35 MPH

J.U.L.I.E.
JOINT UTILITY LOCATION INFORMATION FOR EXCAVATION
1-800-892-0123
OR 811

PROJECT ENGINEER: NATHAN TAYLOR
PROJECT DESIGNER: ROBERT HANDY

CONTRACT NO. 78978



GROSS LENGTH = 7,411.00 FT. = 1.40 MILES
NET LENGTH = 7400.40 FT. = 1.40 MILES



OMISSION: RAILROAD CROSSING
STA 271 + 68.10 TO 271 + 78.70

STATE OF ILLINOIS
DEPARTMENT OF TRANSPORTATION

SUBMITTED May 14 2024
Kirk H. Browner
REGION FIVE ENGINEER

June 28, 2024 [Signature]
ENGINEER OF DESIGN AND ENVIRONMENT

June 28, 2024 [Signature]
DIRECTOR OF HIGHWAYS PROJECT IMPLEMENTATION

PRINTED BY THE AUTHORITY
OF THE STATE OF ILLINOIS

INDEX OF SHEETS

SHEET NO	DESCRIPTION
1	COVER SHEET
2	SIGNATURE SHEET
3	INDEX OF SHEETS, HIGHWAY STANDARDS, & GENERAL NOTES
4	PAVEMENT DESIGN
5-9	SUMMARY OF QUANTITIES
10-12	TYPICAL SECTIONS: IL 148
13	PAVEMENT RESURFACING SCHEDULE PARKING LANE RESURFACE & CURB GUTTER REPAIR SCHEDULE
14-17	PAVEMENT MARKING SCHEDULE
18	RAISE REFLECTIVE PAVEMENT MARKER SCHEDULE
19	TEMPORARY RAMPS FOR SIDEWALKS & ENTRANCES SCHEDULE
20	SIDEWALK SCHEDULE, DRAINAGE SCHEDULE AND UTILITY SCHEDULE
21	TRAFFIC SIGNAL SCHEDULE TRAFFIC SIGNAL REMOVAL MODIFICATION SCHEDULE
22	PAVEMENT PATCHING SCHEDULES PAVEMENT SURVEY PLAN MAP LOCATION
23-25	PAVEMENT MARKINGS PLANS
26	SIDEWALK RAMP DETAILS-HERRIN STREET
27	SIDEWALK RAMP DETAILS-VAN BUREN STREET
28	SIDEWALK RAMP DETAILS-TYLER STREET
29	SIDEWALK RAMP DETAILS-ASH STREET
30	SIDEWALK RAMP DETAILS-STOTLAR STREET
31	SIDEWALK RAMP DETAILS-FORD STREET
32	SIDEWALK RAMP DETAILS-GRANT STREET
33	TRAFFIC SIGNALS DETAILS-HERRIN STREET
34	TRAFFIC SIGNALS DETAILS-STOTLAR STREET INLAY DETAILS, ROUGH GROVE SURFACE SIGNAGE, &
35	UNEVEN LANES SIGNAGE
36	CONCRETE COLLAR & DETAIL OF INLETS TO BE RECONSTRUCTED

GENERAL NOTES

FACTORS USED FOR ESTIMATING PLAN QUANTITIES ARE AS FOLLOWS AND SHALL NOT BE USED FOR THE BASIS OF FINAL QUANTITIES:

ALL HOT MIX ASPHALT 2.016 TONS/CU. YD.

THE QUANTITY OF SHORT TERM PAVEMENT MARKING SHOWN IN THE PLANS IS BASED ON ONE APPLICATION EACH FOR THE HMA SURFACE REMOVAL, BINDER COURSE, AND SURFACE COURSE

HMA RESURFACING SHALL BE PLACED IN A SEQUENCE THAT WILL MINIMIZE THE TIME THE CENTERLINE EDGE IS EXPOSED TO TRAFFIC. WHEN AT THE END OF A DAY'S OPERATION THE EXPOSED CENTERLINE EDGE IS GREATER THAN 2,000 FT, THE CONTRACTOR SHALL BE REQUIRED TO PAVE IN THE ADJACENT LANE ON THE FOLLOWING WORK DAY. PRIOR TO WINTER SHUTDOWN, RESURFACING ON ADJACENT LANES IS TO BE BROUGHT UP TO THE SAME ELEVATION.

LONGITUDINAL JOINT SEALANT SHALL BE PLACED UNDER THE HMA SURFACE COURSE

THE PROPOSED PEDESTRIAN PUSH BUTTONS DEPICTED ON SHEETS 33 AND 34 SHALL BE INCLUDED IN THE COST OF ACCESSIBLE PEDESTRIAN SIGNALS.

COMMITMENTS: INFORM SIH HERRIN HOSPITAL OF TRAFFIC CONTROL PROCEDURES

HIGHWAY STANDARDS

00001-00 STANDARD SYMBOLS, ABBREVIATIONS AND PATTERNS	701301-04 LANE CLOSURE, 2L, 2W, SHORT TIME OPERATIONS
001001-02 AREAS OF REINFORCEMENT BARS	701502-09 URBAN LANE CLOSURE, 2L, 2W, WITH BIDIRECTIONAL LEFT TURN LANE
001006 DECIMAL OF AN INCH AND OF A FOOT	701602-10 URBAN LANE CLOSURE, MULTILANE, 2W WITH BIDIRECTIONAL LEFT TURN LANE
420001-10 PAVEMENT JOINTS	701606-10 URBAN SINGLE LANE CLOSURE, MULTILANE, 2W WITH MOUNTABLE MEDIAN
424001-11 PERPENDICULAR CURB RAMPS FOR SIDEWALKS	701611-01 URBAN HALF ROAD CLOSURE, MULTILANE, 2W WITH MOUNTABLE MEDIAN
424006-05 DIAGONAL CURB RAMPS FOR SIDEWALKS	701701-10 URBAN LANE CLOSURE, MULTILANE INTERSECTION
424011-04 CORNER PARALLEL CURB RAMPS FOR SIDEWALKS	701801-06 SIDEWALK, CORNER OR CROSSWALK CLOSURE
424021-06 DEPRESSED CORNER FOR SIDEWALKS	701901-09 TRAFFIC CONTROL DEVICES
442201-03 CLASS C & D PATCHES	780001-05 TYPICAL PAVEMENT MARKINGS
420701-03 PAVEMENT WELDED WIRE REINFORCEMENT	781001-04 TYPICAL APPLICATIONS RAISED REFLECTIVE PAVEMENT MARKERS
	814001-03 HANDHOLES
	857001-01 STANDARD PHASE DESIGNATION DIAGRAMS & PHASE SEQUENCES
	873001-02 TRAFFIC SIGNAL GROUNDING & BONDING
604001-05 FRAME & LIDS TYPE 1	876001-04 PEDESTRIAN PUSH BUTTON POST
604006-02 FRAME & LID TYPE 15	878001-11 CONCRETE FOUNDATION DETAILS
606001-08 CONCRETE CURB TYPE B & COMBINATION CONCRETE CURB & GUTTER	880006-01 TRAFFIC SIGNAL MOUNTING DETAILS
701006-05 OFF-ROAD OPERATIONS, 2L, 2W, 15 FT TO 24 IN FROM PAVEMENT EDGE	862001-01 UNINTERRUPTABLE POWER SUPPLY (UPS)

REV. - MS

MODEL: Index-General-HMA-Mix (Sheet)
 FILE NAME: P:\2025\250000\250000\DOT\Office\DOT\250000\250000\DOT\250000\250000\DOT\Index-General-HMA-Mix.dgn

USER NAME = robert.handy	DESIGNED -	REVISED -	STATE OF ILLINOIS DEPARTMENT OF TRANSPORTATION	INDEX, GENERAL NOTES, HIGHWAY STANDARDS, AND LIST OF COMMITMENTS	F.A.P. RTE.	SECTION	COUNTY	TOTAL SHEETS	SHEET NO.		
DRAWN -	REVISED -	726			(129X-2,130)RS-6	WILLIAMSON	36	3			
PLOT SCALE = 0.16666633 / in.	CHECKED -	REVISED -			CONTRACT NO. 78978						
PLOT DATE = 5/14/2024	DATE -	REVISED -			ILLINOIS FED. AID PROJECT						
					SCALE:	SHEET	OF	SHEETS	STA.	TO	STA.

SUMMARY OF QUANTITIES - CONT

COUNTY:	WILLIAMSON	WILLIAMSON
ROUTE:	FAP 726	FAP 726
FUNDING:	80% FEDERAL 20% STATE	80% FEDERAL 20% CITY
LOCATION:	URBAN	URBAN
TOTAL QUANTITY	ROADWAY 0005	PARKING 0021

CODE NUMBER	ITEM DESCRIPTION	UNIT	TOTAL QUANTITY	ROADWAY 0005	PARKING 0021
54248510	CONCRETE COLLAR	CU YD	0.24	0.24	
56109210	WATER VALVES TO BE ADJUSTED	EACH	3	3	
60406400	FRAMES AND LIDS, TYPE 15	EACH	6	6	
60600605	CONCRETE CURB, TYPE B	FOOT	465		465
60603800	COMBINATION CONCRETE CURB AND GUTTER, TYPE B-6.12	FOOT	349		349
60605000	COMBINATION CONCRETE CURB AND GUTTER, TYPE B-6.24	FOOT	430		430
67000400	ENGINEER'S FIELD OFFICE, TYPE A	CAL MO	8	8	
67100100	MOBILIZATION	L SUM	1	1	
70102622	TRAFFIC CONTROL AND PROTECTION, STANDARD 701502	L SUM	1	1	
70102625	TRAFFIC CONTROL AND PROTECTION, STANDARD 701606	L SUM	1	1	
70102632	TRAFFIC CONTROL AND PROTECTION, STANDARD 701602	L SUM	1	1	
70102634	TRAFFIC CONTROL AND PROTECTION, STANDARD 701611	L SUM	1	1	
70102635	TRAFFIC CONTROL AND PROTECTION, STANDARD 701701	L SUM	1	1	
70102640	TRAFFIC CONTROL AND PROTECTION, STANDARD 701801	L SUM	1	1	
70107025	CHANGEABLE MESSAGE SIGN	CAL DA	28	28	
70200100	NIGHTTIME WORK ZONE LIGHTING	L SUM	1	1	
70300100	SHORT TERM PAVEMENT MARKING	FOOT	5,880	5,880	

REV. - MS

MODEL: S002 (Rev. 4/14) FILE NAME: p:\projects\p1000\mms\DOT_Cases\District 8\ORD Project\78978\CAD\Drawings\78978-SUM-QTY-S00.dgn

USER NAME = robert.handy	DESIGNED -	REVISED -
PLOT SCALE = 0.16666633 / in.	DRAWN -	REVISED -
PLOT DATE = 5/14/2024	CHECKED -	REVISED -
	DATE -	REVISED -

**STATE OF ILLINOIS
DEPARTMENT OF TRANSPORTATION**

SUMMARY OF QUANTITIES

SCALE: SHEET 2 OF 3 SHEETS STA. TO STA.

F.A.P. RTE.	SECTION	COUNTY	TOTAL SHEETS	SHEET NO.
726	(129X-2, 130)RS-6	WILLIAMSON	36	6
CONTRACT NO. 78978				
ILLINOIS FED. AID PROJECT				

SUMMARY OF QUANTITIES - CONT

COUNTY:	WILLIAMSON	WILLIAMSON
ROUTE:	FAP 726	FAP 726
FUNDING:	80% FEDERAL 20% STATE	80% FEDERAL 20% CITY
LOCATION:	URBAN	URBAN
	ROADWAY	PARKING
	0005	0021

CODE NUMBER	ITEM DESCRIPTION	UNIT	TOTAL QUANTITY	ROADWAY	PARKING
70300150	SHORT TERM PAVEMENT MARKING REMOVAL	SQ FT	1,960	1,960	
70300211	TEMPORARY PAVEMENT MARKING LETTERS AND SYMBOLS - PAINT	SQ FT	1,391	1,391	
70300221	TEMPORARY PAVEMENT MARKING - LINE 4"- PAINT	FOOT	29,216	29,216	
70300241	TEMPORARY PAVEMENT MARKING - LINE 6"- PAINT	FOOT	2,660	2,660	
70300261	TEMPORARY PAVEMENT MARKING - LINE 12"- PAINT	FOOT	3,420	3,420	
70300281	TEMPORARY PAVEMENT MARKING - LINE 24"- PAINT	FOOT	937	937	
* 78000100	THERMOPLASTIC PAVEMENT MARKING - LETTERS AND SYMBOLS	SQ FT	1,391	1,391	
* 78000200	THERMOPLASTIC PAVEMENT MARKING - LINE 4"	FOOT	29,216	29,216	
* 78000400	THERMOPLASTIC PAVEMENT MARKING - LINE 6"	FOOT	2,660	2,660	
* 78000600	THERMOPLASTIC PAVEMENT MARKING - LINE 12"	FOOT	3,420	3,420	
* 78000650	THERMOPLASTIC PAVEMENT MARKING - LINE 24"	FOOT	937	937	
* 78011000	GROOVING FOR RECESSED PAVEMENT MARKING, LETTERS AND SYMBOLS	SQ FT	1,391	1,391	
* 78011025	GROOVING FOR RECESSED PAVEMENT MARKING 5"	FOOT	21,586	21,586	
* 78011035	GROOVING FOR RECESSED PAVEMENT MARKING 7"	FOOT	2,660	2,660	
* 78011065	GROOVING FOR RECESSED PAVEMENT MARKING 13"	FOOT	3,420	3,420	

* SPECIALTY ITEM

MODEL: S00_3 (Sheet)
FILE NAME: P:\Bids\2024\78978\DOT\Documents\DOT Office\Sheet\9080 Project\78978\CADD\DrawCAD\Sheet\DOT\9080\9080-S00.dgn

USER NAME = robert.handy	DESIGNED -	REVISED -	
	DRAWN -	REVISED -	
PLOT SCALE = 0.16666633' / in.	CHECKED -	REVISED -	
PLOT DATE = 5/14/2024	DATE -	REVISED -	

**STATE OF ILLINOIS
DEPARTMENT OF TRANSPORTATION**

SUMMARY OF QUANTITIES

SCALE: SHEET 3 OF 3 SHEETS STA. TO STA.

F.A.P. RTE.	SECTION	COUNTY	TOTAL SHEETS	SHEET NO.
726	(129X-2,130)RS-6	WILLIAMSON	36	7
CONTRACT NO. 78978				
ILLINOIS FED. AID PROJECT				

SUMMARY OF QUANTITIES - CONT

CODE NUMBER	ITEM DESCRIPTION	UNIT	TOTAL QUANTITY	COUNTY:	WILLIAMSON	WILLIAMSON
				ROUTE:	FAP 726	FAP 726
			FUNDING:	80% FEDERAL 20% STATE	80% FEDERAL 20% CITY	
			LOCATION:	URBAN	URBAN	
				ROADWAY	PARKING	
				0005	0021	
* 78011125	GROOVING FOR RECESSED PAVEMENT MARKING 25"	FOOT	937		937	
* 78100100	RAISED REFLECTIVE PAVEMENT MARKER	EACH	594		594	
78300200	RAISED REFLECTIVE PAVEMENT MARKER REMOVAL	EACH	594		594	
78300201	PAVEMENT MARKING REMOVAL - GRINDING	SQ FT	17,754		17,754	
* 80300100	LOCATING UNDERGROUND CABLE	FOOT	99		99	
* 81028320	UNDERGROUND CONDUIT, PVC, 1" DIA.	FOOT	99		99	
* 81028350	UNDERGROUND CONDUIT, PVC, 2" DIA.	FOOT	23		23	
* 81028370	UNDERGROUND CONDUIT, PVC, 3" DIA.	FOOT	171		171	
* 81028390	UNDERGROUND CONDUIT, PVC, 4" DIA.	FOOT	212		212	
* 81400100	HANDHOLE	EACH	3		3	
* 86200200	UNINTERRUPTABLE POWER SUPPLY, STANDARD	EACH	1		1	
* 87301215	ELECTRIC CABLE IN CONDUIT, SIGNAL NO. 14 2C	FOOT	1,904		1,904	
* 87301225	ELECTRIC CABLE IN CONDUIT, SIGNAL NO. 14 3C	FOOT	2,015		2,015	
* 87301900	ELECTRIC CABLE IN CONDUIT, EQUIPMENT GROUNDING CONDUCTOR, NO. 6 1C	FOOT	690		690	
* 87500700	TRAFFIC SIGNAL POST, 11 FT.	EACH	2		2	
* 87600100	PEDESTRIAN PUSH BUTTON POST, TYPE I	EACH	8		8	
* 87800100	CONCRETE FOUNDATION, TYPE A	FOOT	6		6	

* SPECIALTY ITEM

REV. - MS

MODEL: SDO (Rev) FILE NAME: p:\2024\p1\100\mms\DOT\Office\Bids\18080\Project\7818\CAD\Drawings\18080\7818-SQC_SDO.dgn

USER NAME = robert.handy	DESIGNED -	REVISED -
	DRAWN -	REVISED -
PLOT SCALE = 0.16666633 / in.	CHECKED -	REVISED -
PLOT DATE = 5/14/2024	DATE -	REVISED -

**STATE OF ILLINOIS
DEPARTMENT OF TRANSPORTATION**

SUMMARY OF QUANTITIES

SCALE: SCALE SHEET 0 OF 1 SHEETS STA. TO STA.

F.A.P. RTE.	SECTION	COUNTY	TOTAL SHEETS	SHEET NO.
726	(129X-2,130)RS-6	WILLIAMSON	36	8
CONTRACT NO. 78978			ILLINOIS FED. AID PROJECT	

SUMMARY OF QUANTITIES - CONT

CODE NUMBER	ITEM DESCRIPTION	UNIT	TOTAL QUANTITY	COUNTY:	WILLIAMSON	WILLIAMSON
				ROUTE:	FAP 726	FAP 726
			FUNDING:	80% FEDERAL 20% STATE	80% FEDERAL 20% CITY	
			LOCATION:	URBAN	URBAN	
				ROADWAY	PARKING	
				0005	0021	
* 87900100	DRILL EXISTING FOUNDATION	EACH	6		6	
* 87900200	DRILL EXISTING HANDHOLE	EACH	11		11	
* 88102717	PEDESTRIAN SIGNAL HEAD, LED, 1-FACE, BRACKET MOUNTED WITH COUNTDOWN TIMER	EACH	16		16	
* 89502200	MODIFY EXISTING CONTROLLER	EACH	2		2	
89502300	REMOVE ELECTRIC CABLE FROM CONDUIT	FOOT	4,756		4,756	
89502375	REMOVE EXISTING TRAFFIC SIGNAL EQUIPMENT	EACH	1		1	
89502380	REMOVE EXISTING HANDHOLE	EACH	2		2	
X1200034	INLET TO BE ADJUSTED WITH NEW LID - SPECIAL	EACH	1		1	
X1700066	POTHOLING	EACH	40		40	
X4240430	PORTLAND CEMENT CONCRETE SIDEWALK 5 INCH (SPECIAL)	SQ FT	3,807		3,807	
X8140115	HANDHOLE TO BE ADJUSTED	EACH	1		1	
* X8760200	ACCESSIBLE PEDESTRIAN SIGNALS	EACH	16		16	
Z0034105	MATERIAL TRANSFER DEVICE	TON	7,624		6,986	638
* Z0036200	PAINT CURB	FOOT	3,779		3,779	
Z0048665	RAILROAD LIABILITY INSURANCE	L SUM	1		1	

* SPECIALTY ITEM

REV. - MS

MODEL: SDO (12/14) FILE NAME: p:\projects\p1\summary.com\PROJECT\Documents\DOT Office\District 8\CRB Project\78978CAD\Drawings\Summary\Summary_SDO.dgn

USER NAME = Nathan.Taylor	DESIGNED -	REVISED -
	DRAWN -	REVISED -
PLOT SCALE = \$SCALE\$	CHECKED -	REVISED -
PLOT DATE = 5/16/2024	DATE -	REVISED -

**STATE OF ILLINOIS
DEPARTMENT OF TRANSPORTATION**

SUMMARY OF QUANTITIES

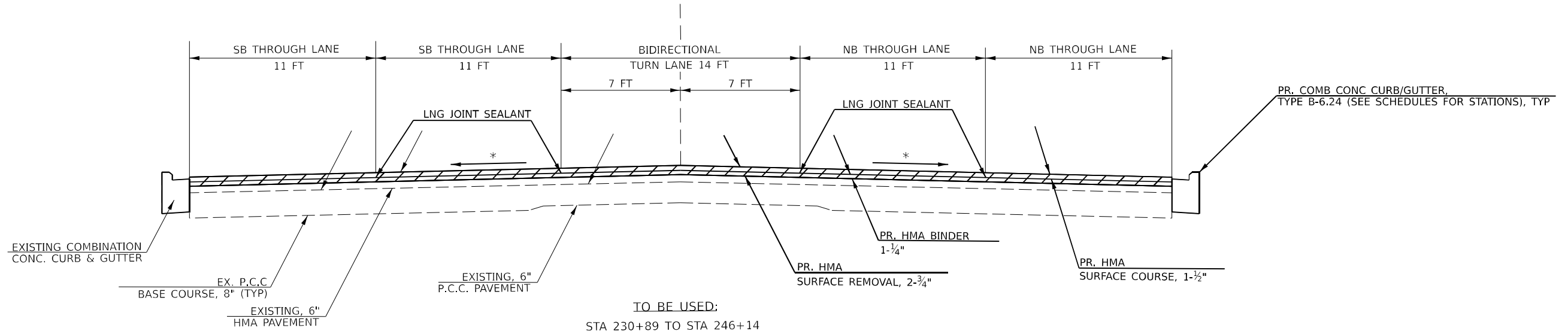
SCALE: SCALE SHEET 0 OF 1 SHEETS STA. TO STA.

F.A.P. RTE.	SECTION	COUNTY	TOTAL SHEETS	SHEET NO.
726	(129X-2,130)RS-6	WILLIAMSON	36	9
CONTRACT NO. 78978				
ILLINOIS FED. AID PROJECT				

TYPICAL SECTION

N.T.S

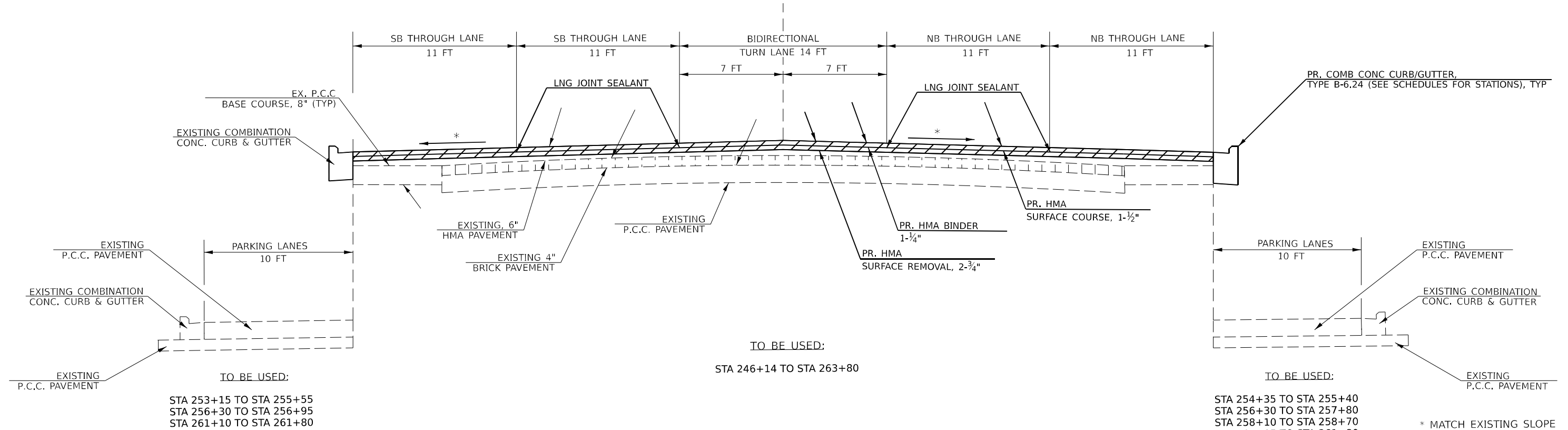
IL 148
FAP 726



TYPICAL SECTION

N.T.S

IL 148
FAP 726



MODEL: Typical (Sheet)
FILE NAME: P:\DOT\Documents\DOT Office\District 9\ORD Project\78978\CADD\Drawings\DOT\98789\Sheet\Typical.dgn

USER NAME = robert.handy	DESIGNED -	REVISED -
PLOT SCALE = 0.16666833 / in.	DRAWN -	REVISED -
PLOT DATE = 5/14/2024	CHECKED -	REVISED -
	DATE -	REVISED -

**STATE OF ILLINOIS
DEPARTMENT OF TRANSPORTATION**

TYPICAL SECTION

SCALE: SCALE SHEET 1 OF 3 SHEETS STA. TO STA.

F.A.P. RTE.	SECTION	COUNTY	TOTAL SHEETS	SHEET NO.
726	(129X-2,130)RS-6	WILLAMSON	36	10
CONTRACT NO. 78978				
ILLINOIS FED. AID PROJECT				

PAVEMENT RESURFACING SCHEDULE

LOCATION STATION TO STATION			LENGTH	ROADWAY WIDTH		TEMP RAMP	HMA SURFACE REMOVAL, 2 3/4"	HOT-MIX ASPHALT BINDER COURSE, IL-9.5FG, N70	HOT-MIX ASPHALT SURFACE COURSE, IL-9.5, MIX "D", N70	BITUMINOUS MATERIALS (TACK COAT)	LNG JOINT SEALANT	MATERIAL TRANSFER DEVICE	NOTES
				FOR INFO PURPOSE ONLY									
			FT	FT	SQ YD	SQ YD	TON	TON	LBS	FT	TON		
IL 148													
230+89	TO	246+14	1,525	58	92	9,828	688	826	6,634	6,100	1,514		
246+14	TO	262+70	1,656	58		10,672	718	897	7,204	6,624	1,645		
262+70	TO	264+45	175	65		1,204	89	107	854	700	196	CALCULATE AVG AREA TRIANGLE	
264+45	TO	271+68	724	56	89	4,505	316	380	3,041	2,896	696		
271+68.10	TO	271+78.70	GAP RAILROAD CROSSING										
271+79	TO	283+10	1,132	58	92	7,296	511	615	4,925	4,528	1,126		
283+10	TO	284+15	105	51		595	42	51	402	420	93	CALCULATE AVG AREA TRIANGLE	
284+15	TO	297+50	1,335	44		6,527	457	550	4,406	4,005	1,007		
297+50	TO	298+60	110	52		636	45	54	429	330	99	CALCULATE AVG AREA TRIANGLE	
298+60	TO	302+30	370	65		2,673	188	225	1,804	1,110	413		
302+30	TO	304+00	170	47		888	63	75	600	510	138	CALCULATE AVG AREA TRIANGLE	
304+00	TO	305+00	100	34	54	378	27	32	255	100	59		
TOTAL					327	45,262	3,174	3,812	30,554	27,323	6,986		

PARKING LANE RESURFACE & CURB GUTTER REPAIR SCHEDULE

CURB & GUTTER SCHEDULE

LOCATION STATION TO STATION			LENGTH	PARKING LANE WIDTH		HOT-MIX ASPHALT SURFACE REMOVAL, 1 1/2"	HOT-MIX ASPHALT SURFACE REMOVAL, 2 3/4"	HOT-MIX ASPHALT BINDER COURSE, IL-9.5FG, N70	HOT-MIX ASPHALT SURFACE COURSE, IL-9.5, MIX "D" N70	BITUMINOUS MATERIALS (TACK COAT)	COMBINATION CURB AND GUTTER REMOVAL		CONCRETE CURB, TYPE B	COMBINATION CONCRETE CURB AND GUTTER, TYPE B-6.24	TIE BARS 1/2"	LOCATION	COMB CC&G TYB 6.12	COMB CC&G TYB 6.24	
				LEFT	RIGHT						FOOT	FOOT							
			FT	FT	FT	SQ YD	SQ YD	TON	TON	POUND	FEET	FEET	FEET	FEET	EACH				
IL 148- HERRIN																			
230+30	TO	230+35	5								40		40	14	HERRIN ST		20		
233+45	TO	233+50	5							5			5	2	NW		32		
234+55	TO	235+00	45							30			30	11	SW		27		
237+00	TO	238+60	160							10	40		50	17	SE		44		
242+65	TO	242+70	5								5		5	2	VAN BUREN ST				
246+30	TO	246+40	10							10			10	4	SW		19		
251+65	TO	251+70	5								20		20	8	SE		26		
257+85	TO	257+90	5								5		5	2	TYLER ST				
264+14	TO	266+10	196	8.0	8.0		349	25	30	158	70	70		24	NW	35			
266+10	TO	267+30	120	8.0	10.0		240	17	21	108					NE	36			
267+30	TO	270+27	297	8.0	8.0		528	37	45	238					SW	31			
271+14	TO	271+68	54	8.0	8.0		96	7	9	44					SE	12			
271+68.10	TO	271+78.70	GAP RAILROAD CROSSING																
271+79	TO	272+60	82	8.0	8.0		146	11	13	66					ASH ST				
272+60	TO	272+88	28	8.0	8.0		50	4	5	23	25	25		9	NE		7		
273+87	TO	274+71	84	8.0	8.0		150	11	13	68	105	105		36	SW	17			
274+71	TO	275+76	105	8.0	8.0		187	14	16	84					SE	30			
276+75	TO	279+06	231	8.0	8.0		411	29	35	185	220	220		74	STOTLAR ST				
279+06	TO	278+86	20	8.0	8.0		36	3	3	16					NW	27			
279+73	TO	280+50	77	8.0	8.0		137	10	12	62	40	40		14	NE	38			
280+50	TO	282+38	188	8.0	8.0		335	24	29	151					SW	12			
283+31	TO	284+15	84	8.0	8.0		150	11	13	68					SE	28			
284+15	TO	285+75	160	7.0	7.0	249			21	112					FORD ST				
205+75	TO	205+00	5	7.0	7.0	8			1	4	5	5		2	NW	8			
285+80	TO	290+00	420	7.0	7.0	654			55	294					NE	30			
290+00	TO	293+00	300	7.0	7.0	467			40	210	75	15	90	31	GRANT ST				
293+00	TO	298+60	560	7.0	7.0	872			74	392					NW	16			
TOTAL						2,250	2,815	203	435	2,283	585	135	465	255	250	TOTAL		349	175

*638 TONS OF QUANTITY ADDED TO SOQ FOR MATERIAL TRANSFER DEVICE IN PARKING LANE RESURFACING

MODEL: D:\m\Resurfacing\Projects\148\148.dwg
FILE NAME: P:\148\148.dwg
PROJECT: 148
DATE: 5/16/2024

USER NAME = Nathan.Taylor
DESIGNED -
DRAWN -
PLOT SCALE = \$SCALE\$
PLOT DATE = 5/16/2024

CHECKED -
DATE -

REVISED -
REVISED -
REVISED -
REVISED -

**STATE OF ILLINOIS
DEPARTMENT OF TRANSPORTATION**

**RESURFACING SCHEDULE & CURB GUTTER REPAIR SCHEDULE
PARKING LANE RESURFACING SCHEDULE**

SCALE: SCALE SHEET 0 OF 1 SHEETS STA. TO STA.

F.A.P RTE.	SECTION	COUNTY	TOTAL SHEETS	SHEET NO.
726	(129X-2.130)RS-6	WILLIAMSON	36	13
CONTRACT NO. 78978				
ILLINOIS FED. AID PROJECT				

IL 148 PAVEMENT MARKING SCHEDULE

LOCATION STATION TO STATION	LENGTH (INFO. ONLY)	PAINT		THERMOPLASTIC						NOTES	
		PAINT CURB	SOLID YELLOW	LINE 4"							
				LEFT OF TWO WAY LEFT TURN	CENTER TWO WAY LEFT TURN	RIGHT OF TWO WAY LEFT TURN	CENTER LINE	PARKING LANE	INTERSECTION TURN LANE & CROSSWALK LANE		
IL 148 (WILLIAMSON COUNTY)		FOOT	FOOT	FOOT	FOOT	FOOT	FOOT	FOOT	FOOT		
230+89	TO	233+80	291		221		221	146		200	
233+80	TO	234+75	95		190		190	48			
234+75	TO	243+65	890		890	446	890	446		156	
243+65	TO	244+50	85		170	44	170				
244+50	TO	245+60	110		110		110			100	
245+60	TO	246+25	65								
246+25	TO	247+25	100		100		100	50			
247+25	TO	248+25	100		200	50	200	50		100	
248+25	TO	250+15	190		190	96	190	96			
250+15	TO	251+00	85		170		170	44			
251+05	TO	252+10	105		105		105	54		100	
252+10	TO	252+75	65	80							POPLAR ST INTERSECTION
252+75	TO	253+85	110	20	110		110	56		100	
253+85	TO	254+75	90		180		180	46	405		
254+75	TO	261+80	705		705	354	705	354	721		STA 253+15 TO STA 255+55 (CONC PARK LANES) STA 256+30 TO STA 258+70 (CONC PARK LANES) STA 261+10 TO STA 261+80 (CONC PARK LANES)
261+80	TO	262+70	90		180		180	46			
262+70	TO	263+80	110		110		110	56		100	
263+80	TO	264+50	70	100							MAPLE ST INTERSECTION
264+50	TO	267+45	295	50	295		295	148	395	200	
SUB TOTAL 1				250	3,926	990	3,926	1,640	1,521	1,056	

MODEL: Pavement Marking (Sheet)
FILE NAME: P:\GIS\Projects\2024\148\148_Pavement_Marking_Schedule.dwg

USER NAME = robert.handy	DESIGNED -	REVISED -
	DRAWN -	REVISED -
PLOT SCALE = 0.16666833' / in.	CHECKED -	REVISED -
PLOT DATE = 5/14/2024	DATE -	REVISED -

**STATE OF ILLINOIS
DEPARTMENT OF TRANSPORTATION**

PAVEMENT MARKING SCHEDULE

SCALE: SHEET 1 OF 4 SHEETS STA. TO STA.

F.A.P. RTE.	SECTION	COUNTY	TOTAL SHEETS	SHEET NO.
726	(129X-2.130)RS-6	WILLAMSON	36	14
CONTRACT NO. 78978				
ILLINOIS FED. AID PROJECT				

IL 148 PAVEMENT MARKING SCHEDULE CONT

LOCATION STATION TO STATION	LENGTH (INFO. ONLY)	PAINT		THERMOPLASTIC						NOTES
		PAINT CURB	LINE 4"							
			LEFT OF TWO WAY LEFT TURN	CENTER TWO WAY LEFT TURN	RIGHT OF TWO WAY LEFT TURN	CENTER LINE	PARKING LANE	INTERSECTON TURN LANE		
SOLID YELLOW	SOLID YELLOW	SKIP-DASH YELLOW	SOLID YELLOW	SKIP-DASH WHITE	SOLID WHITE	SOLID WHITE				
IL 148		FOOT	FOOT	FOOT	FOOT	FOOT	FOOT	FOOT	FOOT	
267+45	TO 268+15	70	100							HARRISON ST
268+15	TO 269+20	105	85	105		105	54	294		STA 264+14 TO STA 267+30 (PARKING LANES)
269+20	TO 271+68	249	400	498		498	130	698		
STA 271+68.10 TO STA 271+78.70 GAP RAILROAD CROSSING										
271+79	TO 272+80	102	204	102		102	52	286	100	
272+80	TO 273+70	90								CHERRY STREET INTERSECTION
273+70	TO 275+80	210	100	210		210	106	588	200	
275+80	TO 276+55	75	100							<u>MONROE STREET INTERSECTION</u>
276+55	TO 278+90	235	100	235		235	118	658	200	
278+90	TO 279+50	60	100							MADISON ST INTESECTION
279+50	TO 282+50	300		300		300	150	840	200	
279+50	TO 282+50	300								
282+50	TO 283+20	70	160							
283+20	TO 284+15	95		190		190				
284+15	TO 297+50	1,335	1,130	1,335		1,335	668	2,745		(PARKING LANES)
297+50	TO 299+60	210	250	280		280	108		100	
299+60	TO 300+40	80								<u>HERRIN STREET INTERSECTION</u>
300+40	TO 302+30	190	400	308		308	60			
302+30	TO 305+00	270		270	136	270				
SUB TOTAL 2			3,529	3,833	136	3,833	1,446	6,109	800	EXCLUDE PARKING LANE GROOVING FOR RECESSED PAVEMENT MARKING PARKING PAVEMENT MARKING LOCATION S SHALL BE IN ACCORDANCE TO THE RESIDENTAL ENGINEER APPROVAL
SUB TOTAL 1			250	3,926	990	3,926	1,640	1,521	1,056	
TOTAL (IL 148)			3,779	29,216						

MODEL: Pmnt Marking.dwg (Sheet)
 FILE NAME: P:\GIS\Projects\DOT\Documents\DOT\Projects\9378\CAD\Drawings\DOT\9378\9378-Schedule.dwg

USER NAME = robert.handy	DESIGNED -	REVISED -
PLOT SCALE = 0.16666633' / in.	DRAWN -	REVISED -
PLOT DATE = 5/14/2024	CHECKED -	REVISED -
	DATE -	REVISED -

STATE OF ILLINOIS
DEPARTMENT OF TRANSPORTATION

PAVEMENT MARKING SCHEDULE
 SCALE: SHEET 2 OF 4 SHEETS STA. TO STA.

F.A.P. RTE.	SECTION	COUNTY	TOTAL SHEETS	SHEET NO.
726	(129X-2,130)RS-6	WILLAMSON	36	15
CONTRACT NO. 78978				
ILLINOIS FED. AID PROJECT				

IL 148 RAISED REFLECTIVE PAVEMENT MARKERS

LOCATION STATION TO STATION			LENGTH (INFORMATION ONLY)	RAISED REFLECTIVE PAVEMENT MARKERS ONE-WAY AMBER (INFORMATION ONLY)	RAISED REFLECTIVE PAVEMENT MARKERS TWO-WAY AMBER (INFORMATION ONLY)	RAISED REFLECTIVE PAVEMENT MARKERS ONE-WAY CRYSTAL (INFORMATION ONLY)	RAISED REFLECTIVE PAVEMENT MARKERS	RAISED REFLECTIVE PAVEMENT MARKER REMOVAL
IL 148 (WILLIAMSON COUNTY)			FEET	EACH	EACH	EACH	EACH	EACH
230+89	TO	233+80	291	6	12	18	36	36
233+80	TO	234+75	95	6		4	10	10
234+75	TO	243+65	890		46	24	70	70
243+65	TO	244+50	85	6		4	10	10
244+50	TO	247+25	275		12	10	30	30
247+25	TO	248+25	100	6		4	10	10
248+25	TO	250+15	190		10	6	16	16
250+15	TO	251+00	85	6		4	10	10
251+00	TO	253+85	285		12	14	26	26
253+85	TO	254+75	90	6		4	10	10
254+75	TO	261+80	705		36	18	54	54
261+80	TO	262+70	90	6		4	10	10
262+70	TO	269+20	650		26	28	54	54
269+20	TO	271+68	249	14		8	22	22
STA 271+68.10 TO STA 271+78.70 GAP RAILROAD CROSSING								
271+79	TO	283+10	1,132		44	46	90	90
283+10	TO	284+15	105	6		4	10	10
284+15	TO	297+65	1,350		34	34	68	68
297+65	TO	298+65	100		6	2	8	8
298+65	TO	302+30	365		16	20	36	36
302+30	TO	305+00	270		14		14	14
TOTALS (IL 148)							594	594

MODEL: Print Marking Schedule
 FILE NAME: P:\GIS\Projects\2024\2024-05-14\DOT\Documents\DOT\Office\District 9\ORD Project\78978\CAD\Drawings\78978-SubE-Schedule.dwg

USER NAME = robert.handy	DESIGNED -	REVISED -
PLOT SCALE = 0.166666833' / in.	DRAWN -	REVISED -
PLOT DATE = 5/14/2024	CHECKED -	REVISED -
	DATE -	REVISED -

**STATE OF ILLINOIS
DEPARTMENT OF TRANSPORTATION**

RAISED REFLECTIVE PAVEMENT MARKER SCHEDULE

SCALE: SHEET 1 OF 1 SHEETS STA. TO STA.

F.A.P. RTE.	SECTION	COUNTY	TOTAL SHEETS	SHEET NO.
726	(129X-2,130)RS-6	WILLAMSON	35	18
CONTRACT NO. 78978				
ILLINOIS FED. AID PROJECT				

TEMPORARY RAMPS FOR SIDEROADS

LOCATION			LENGTH	TEMP RAMP
F.A.P. 726 (IL 148)				
STATION	LT/RT	INTERSECTING STREET	FOOT	SQ YD
232+33	LT	HEMLOCK	100	39
232+33	RT	HEMLOCK	100	39
235+83	LT	CYPRESS	60	23
235+83	RT	CYPRESS	60	23
238+85	LT	GRANT ST	60	23
238+85	RT	GRANT ST	60	23
242+35	LT	FORD ST	55	21
242+35	RT	FORD ST	55	21
245+88	LT	STOTLAR ST	60	23
245+88	RT	STOTLAR ST	60	23
248+88	LT	ASH ST	50	19
248+85	RT	ASH ST	50	19
252+38	LT	POPLAR ST	50	19
252+38	RT	POPLAR ST	50	19
255+89	LT	PINE ST	45	18
255+89	RT	PINE ST	40	16
264+14	LT	MAPLE ST	40	16
264+14	RT	MAPLE ST	75	29
267+75	LT	HARRISON	45	18
267+75	RT	HARRISON	60	23
273+25	LT	CHERRY ST	60	23
273+25	RT	CHERRY ST	55	21
276+20	LT	MONROE ST	55	21
276+20	RT	MONROE ST	55	21
279+25	LT	MADISON ST	40	16
279+25	RT	MADISON ST	40	16
286+30	LT	TYLER ST	45	18
286+30	RT	TYLER ST	45	18
289+80	LT	VAN BUREN	50	19
289+80	RT	VAN BUREN	45	18
293+30	LT	POLK ST	50	19
293+30	RT	POLK ST	80	31
296+65	LT	TAYLOR ST	60	23
296+65	RT	TAYLOR ST	60	23
299+95	LT	HERRIN ST	95	37
299+95	RT	HERRIN ST	150	58
SIDE ROAD SUB TOTAL				840

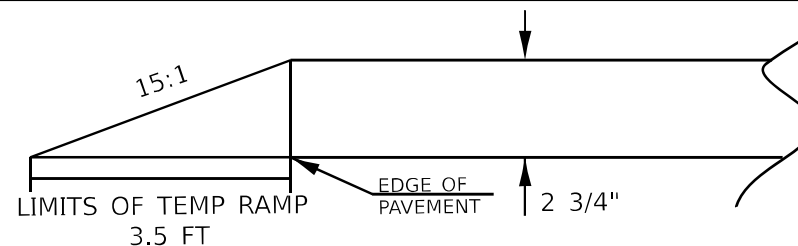
TEMPORARY RAMPS FOR ENTRANCES

LOCATION			LENGTH	TEMP RAMP
F.A.P. 726 (IL 148)				
STATION	LT/RT	COMMERICAL BUSINESS	FOOT	SQ YD
234+00	RT	PAY DAY LOANS	20	8
234+30	LT	DOLLAR GENERAL	35	14
234+75	LT	CAR WASH	30	12
235+20	LT	CAR WASH	30	12
236+70	LT	FISH TALES	20	8
239+60	LT	EDWARD JONES	20	8
239+90	RT	SUBWAY	30	12
240+20	LT	RESIDENTIAL HOME	20	8
240+50	RT	SUBWAY	15	6
241+00	LT	INDIA CUSINE	15	6
241+00	RT	BURGER NOOK	15	6
241+55	RT	BURGER NOOK	15	6
241+55	LT	PRIORITY MEDICAL GROUP	20	8
243+00	RT	DOMINO'S	30	12
243+50	RT	DOMINO'S	15	6
243+65	LT	RESIDENTIAL HOME	20	8
244+00	RT	NAILS AND SPA	40	16
244+80	RT	NAILS AND SPA	40	16
244+80	LT	RESIDENTIAL HOME	20	8
246+40	RT	STATE FARM INS	30	12
246+50	LT	DIXIE ICECREAM	35	14
247+00	RT	STATE FARM INS	30	12
247+10	LT	DIXIE ICECREAM	60	23
247+50	RT	CHIC BOUTIQUE	40	16
249+50	LT	HARDEES	30	12
249+50	RT	LOUIE BBQ	30	12
250+15	RT	BRACY INSURANCE	30	12
250+75	RT	BRACY INSURANCE	40	16
251+45	RT	SLICKS	35	14
251+50	LT	HARDEES	45	18
251+90	RT	SLICKS	35	14
253+30	LT	RESIDENTIAL HOME	20	8
253+40	RT	HUCK GAS STATION	55	21
254+75	LT	RESIDENTIAL HOME	30	12
257+25	LT	VAN NATTA FUNERAL HOME	50	19
258+00	LT	VAN NATTA FUNERAL HOME	25	10
ENTRANCE SUB TOTAL 1				416

TEMPORARY RAMPS FOR ENTRANCES

LOCATION			LENGTH	TEMP RAMP
F.A.P. 726 (IL 148)				
STATION	LT/RT	COMMERICAL BUSINESS	FOOT	SQ YD
258+60	LT	CITY OF HERRIN FIRE DEPARTMENT	85	33
259+00	RT	CITY PARKING LOT	30	12
260+70	RT	BANTERRA BANK	45	18
262+00	LT	AMAZON SALON & TAN SPA	20	8
262+70	LT	RAEDA DALLOW	65	25
265+75	RT	UNITED STATES POSTAL SERVICE	35	14
267+00	LT	WILLIAMSON COUNTY AMBULANCE	90	35
271+30	RT	PEOPLES STATE BANK	40	16
272+15	RT	ROBERT BREWER FAMILY FOUNDATION	25	10
272+15	LT	HERRIN CITY PARKING LOT	25	10
284+00	RT	THE CARPENTER PLACE CHURCH	20	8
284+20	LT	NAPA AUTO PARTS	20	8
284+40	RT	THE CARPENTER PLACE CHURCH	20	8
284+50	LT	NAPA AUTO PARTS	35	14
284+80	RT	THE CARPENTER PLACE CHURCH	20	8
285+30	RT	THE CARPENTER PLACE CHURCH	20	8
286+25	LT	EL JALISCO HERRIN RESTAURANT	40	16
286+80	RT	DALES DETAILS	40	16
290+25	RT	HERRIN LIQUOR MART	35	14
291+20	RT	HERRIN LIQUOR MART	45	18
291+75	RT	RON WARD CHEVROLET	30	12
294+20	LT	SONIC DRIVE IN	50	19
295+45	RT	RESIDENTIAL HOME	15	6
295+80	RT	RESIDENTIAL HOME	15	6
297+25	RT	NALLEY'S GARAGE	35	14
297+85	RT	NALLEY'S GARAGE	35	14
297+90	LT	CIRCLE K	55	21
298+35	RT	NALLEY'S GARAGE	30	12
298+85	LT	CIRCLE K	50	19
299+15	RT	NALLEY'S GARAGE	30	12
301+00	LT	UHAUL RENTAL	55	21
302+30	RT	PHILLIPS 66	60	23
269+10	LT	BANK OF HERRIN	30	12
ENTRANCE SUB TOTAL 2				484
ENTRANCE SUB TOTAL 1				416
SIDEROAD SUB TOTAL				840
TOTAL				1,740

TEMPORARY RAMP FOR SIDEROADS DETAIL



MODEL: SidRoads_Shrift
 FILE NAME: P:\GIS\Projects\78978\DOT\Office\Drawings\DOT\78978\78978-Sched.dwg

USER NAME = robert.handy	DESIGNED -	REVISED -
PLOT SCALE = 0.16666833 / in.	DRAWN -	REVISED -
PLOT DATE = 5/14/2024	CHECKED -	REVISED -
	DATE -	REVISED -

STATE OF ILLINOIS
DEPARTMENT OF TRANSPORTATION

TEMPORARY RAMP FOR SIDEROADS SCHEDULE

SCALE: SHEET OF SHEETS STA. TO STA.

F.A.P. RTE.	SECTION	COUNTY	TOTAL SHEETS	SHEET NO.
726	(128X-2, 130)RS-6	WILLIAMSON	36	19
CONTRACT NO. 78978				
ILLINOIS FED. AID PROJECT				

SIDEWALK SCHEDULE

LOCATION	DETECTABLE WARNINGS	PCC CONC SIDEWALK, 5" SPECIAL	PCC DRIVEWAY PAVT 6
	SQ FT	SQ FT	SQ YD
HERRIN ST & NORTH PARK AVE (RTE 148)			
NW	10	327	
NE	13	308	
SW	26	138	
SE	23	507	
VAN BUREN ST & NORTH PARK AVE (RTE 148)			
SW	26	198	
SE	20	203	
TYLER ST & NORTH PARK AVE (RTE 148)			
NW	26	204	
NE	26	196	
SW	27	234	
SE	21	40	
NORTH PARK AVE (RTE 148) & ASH ST			
SW	10	119	
SE	20	176	
STOTLAR ST & NORTH PARK AVE (RTE 148)			
NW	20	138	
NE	20	207	4
SW	20	183	
SE	20	207	
FORD ST & NORTH PARK AVE (RTE 148)			
NW	10	59	
NE	18	149	
GRANT ST & NORTH PARK AVE (RTE 148)			
NW	10	65	
NE	24	150	
TOTAL	390	3,807	4

SIDEWALK SCHEDULE CONT

LOCATION	DRIVEWAY PAVEMENT REMOVAL	COMB CURB GUTTER REMOVAL	SIDEWALK REMOVAL
	SQ YD	FOOT	SQ FT
HERRIN ST & NORTH PARK AVE (RTE 148)			
NW		42	291
NE		32	373
SW		27	131
SE		44	549
VAN BUREN ST & NORTH PARK AVE (RTE 148)			
SW		33	185
SE		26	343
TYLER ST & NORTH PARK AVE (RTE 148)			
NW		35	201
NE		33	208
SW		31	250
SE		12	58
NORTH PARK AVE (RTE 148) & ASH ST			
NE		7	54
SW		17	117
SE		30	168
STOTLAR ST & NORTH PARK AVE (RTE 148)			
NW		27	205
NE	10	38	139
SW		12	163
SE		28	243
FORD ST & NORTH PARK AVE (RTE 148)			
NW		8	96
NE		30	103
GRANT ST & NORTH PARK AVE (RTE 148)			
NW		16	54
NE		29	150
TOTAL	10	557	4,101

DRAINAGE SCHEDULE

LOCATION	FRAMES & LIDS, TYPE 15	CONCRETE COLLAR	INLET TO BE ADJUSTED WITH NEW LID SPECIAL
	FOOT	FOOT	EACH
HERRIN ST & NORTH PARK AVE (RTE 148)			
SE		0.24	1
VAN BUREN ST & NORTH PARK AVE (RTE 148)			
SE	1		
TYLER ST & NORTH PARK AVE (RTE 148)			
NW	1		
NE	1		
NORTH PARK AVE (RTE 148) & ASH ST			
SW	1		
SE	2		
TOTAL	6	0.24	1

UTILITY SCHEDULE

LOCATION	WATER VALVE TO ADJUSTED
	EACH
HERRIN ST & NORTH PARK AVE (RTE 148)	
SW	1
FORD ST & NORTH PARK AVE (RTE 148)	
NE	2
TOTAL	3

REV. - MS

MODEL: Sidewalk Drainage Utility (Sheet)
 FILE NAME: p:\projects\2024\514\2024\DOT\Documents\DOT Office\District 9\ORD Project\78978\CAD\Drawings\DOT 8078-Side Schedule.dgn

USER NAME = robert.handy	DESIGNED -	REVISED -	
	DRAWN -	REVISED -	
PLOT SCALE = 0.16666633 / in.	CHECKED -	REVISED -	
PLOT DATE = 5/14/2024	DATE -	REVISED -	

**STATE OF ILLINOIS
DEPARTMENT OF TRANSPORTATION**

SIDEWALK & DRAINAGE SCHEDULE
UTILITY SCHEDULE

SCALE: SCALE SHEET 0 OF 1 SHEETS STA. TO STA.

F.A.P. RTE.	SECTION	COUNTY	TOTAL SHEETS	SHEET NO.
728	(129X-2,130)RS-6	WILLIAMSON	36	20
CONTRACT NO. 78978				
ILLINOIS FED. AID PROJECT				

TRAFFIC SIGNAL SCHEDULE

LOCATION	LOCATING UNDERGROUND CABLE	UNDERGROUND CONDUIT, PVC, 1" DIA	UNDERGROUND CONDUIT, PVC, 2" DIA	UNDERGROUND CONDUIT, PVC, 3" DIA	UNDERGROUND CONDUIT, PVC, 4" DIA	HANDHOLE	ELECTRIC CABLE IN CONDUIT, SIGNAL NO. 14 2C
	FOOT	FOOT	FOOT	FOOT	FOOT	EACH	FOOT
HERRIN ST & NORTH PARK AVE (RTE 148)	54	52	21	80	120	1	1,045
STOTLAR ST & NORTH PARK AVE (RTE 148)	45	47	2	91	92	2	859
TOTAL	99	99	23	171	212	3	1,904

TRAFFIC SIGNAL SCHEDULE CONT

LOCATION	ELECTRIC CABLE IN CONDUIT, SIGNAL NO. 14 3C	ELECTRIC CABLE IN CONDUIT, EQUIPMENT GROUNDING CONDUCTOR, NO. 6 1C	TRAFFIC SIGNAL POST, 11 FT	CONCRETE FOUNDATION, TYPE A	PEDESTRIAN SIGNAL HEAD, LED, 1-FACE, BRACKET MOUNTED COUNTDOWN TIMER	ACCESSIBLE PEDESTRIAN SIGNAL	PEDESTRIAN PUSHBUTTON POST
	FOOT	FOOT	EACH	FOOT	EACH	EACH	EACH
HERRIN ST & NORTH PARK AVE (RTE 148)	1,106	359	2	6	8	8	4
STOTLAR ST & NORTH PARK AVE (RTE 148)	909	331			8	8	4
TOTAL	2,015	690	2	6	16	16	8

TRAFFIC SIGNAL REMOVAL MODIFICATION SCHEDULE

LOCATION	DRILL EX FOUNDATION	DRILL EXISTING HANDHOLE	REMOVE ELECTRIC CABLE FROM CONDUIT	REMOVE EXISTING HANDHOLE	*REMOVE EXISTING PEDESTRIAN PUSH BUTTON (INFORMATION ONLY)	HANDHOLE TO BE ADJUST	*REMOVE EXISTING SIGNAL HEAD (INFORMATION ONLY)
	EACH	EACH	FOOT	EACH	EACH	EACH	EACH
HERRIN ST & NORTH PARK AVE (RTE 148)	4	5	2,002	1			
STOTLAR ST & NORTH PARK AVE (RTE 148)	2	6	2,754	1	2	1	8
TOTAL	6	11	4,756	2		1	

*TO BE PAID FOR WITH REMOVAL TRAFFIC SIGNAL EQUIPMENT

MODEL: Traffic_Signal_Schedule.dwg
FILE NAME: P:\MIDOT\Documents\DOT Office\District 9\ORD Project\78978\CADD\Drawings\DOT Office\78978\Site\Schedule.dwg

USER NAME = robert.handy	DESIGNED -	REVISED -	STATE OF ILLINOIS DEPARTMENT OF TRANSPORTATION	TRAFFIC SIGNAL SCHEDULE TRAFFIC SIGNAL REMOVAL SCHEDULE			F.A.P. RTE.	SECTION	COUNTY	TOTAL SHEETS	SHEET NO.
PLOT SCALE = 0.16666633' / in.	DRAWN -	REVISED -		726	(129X-2,130)RS-6	WILLIAMSON	36	21			
PLOT DATE = 5/14/2024	CHECKED -	REVISED -		SCALE: SCALE SHEET 0 OF 1 SHEETS STA. TO STA.			CONTRACT NO. 78978				
	DATE -	REVISED -		ILLINOIS FED. AID PROJECT							

PATCHING SCHEDULE & SURVEY LOCATION PLAN

PREPARED BY: KPM/TFB
DATE: 4/24/2024

CONTRACT #: 78978
LOCATION: IL 148 NB in Herrin

PATCH #	L FT	W FT	AREA SQ YD	TYPE	REMARKS	PASSING	DRIVING	PATCH #	L FT	W FT	AREA SQ YD	TYPE	REMARKS
						LANE	LANE						
							Herrin St						
							Van Buren St						
								1	66.5	11	81.28	TYPE 4	
							Tyler St						
							Adams St						
								2	11	8	9.78	TYPE 2	Parking Lane
								3	15	4	6.67	TYPE 2	Parking Lane
							Madison St						
							Walnut St						
								4	11	11	13.44	TYPE 2	
								5	78	11	95.33	TYPE 4	Parking lane in this area needs 2 3/4" milling with new 1 1/4" HMA binder & 1 1/2" HMA surf.
							Ash St						
								6	6	11	7.33	TYPE 2	
							Stollor St						
8	8	11	9.78	TYPE 2				7	8	11	9.78	TYPE 2	
9	7.5	11	9.17	TYPE 2	Center turn								
10	7.5	11	9.17	TYPE 2									
							Cypress St						
11	12	11	14.67	TYPE 2									
12	12	11	14.67	TYPE 2	Center turn								
13	12	11	14.67	TYPE 2				14	12	11	14.67	TYPE 2	
							Herrin St						

NOTE: 10% OF THE TOTAL QUANTITY WAS ADDED TO EACH PATCHING QUANTITY IN THE SOQ FOR ANY FIELD ADJUSTMENTS.

PATCHING SCHEDULE & LOCATION PLAN CONT.

PREPARED BY: KPM/TFB
DATE: 4/24/2024

CONTRACT #: 78978
LOCATION: IL 148 SB in Herrin

PATCH #	STA	L FT	W FT	AREA SQ YD	TYPE	REMARKS	PASSING	DRIVING	PATCH #	STA	L FT	W FT	AREA SQ YD	TYPE	REMARKS
							LANE	LANE							
								Herrin St							
15		12	11	14.67	TYPE 2				16		12	11	14.67	TYPE 2	
17		8	11	9.78	TYPE 2										
								Cypress St							
								Ford St							
18		7.5	11	9.17	TYPE 2				19		7.5	11	9.17	TYPE 2	
								Stollor St							
								Herrin St							

PATCHING SURVEY

PATCH #	CLASS C PATCHING, TY II 14 INCH	CLASS C PATCHING, TY IV 14 INCH
	SQ YD	SQ YD
1		81.28
2	9.78	
3	6.67	
4	13.44	
5		95.33
6	7.33	
7	9.78	
8	9.78	
9	9.17	
10	9.17	
11	14.67	
12	14.67	
13	14.67	
14	14.67	
15	14.67	
16	14.67	
17	9.78	
18	9.17	
19	9.17	
TOTALS	192	177

MODEL: Patch Schedule (Sheet)
FILE NAME: P:\DOT\Documents\DOT Office\District 9\ORD Project\78978\CADD\DOT\78978\4-24-24\78978-Schedule.dgn

USER NAME = robert.handy	DESIGNED -	REVISED -
PLOT SCALE = 0.16666833 / in.	DRAWN -	REVISED -
PLOT DATE = 5/14/2024	CHECKED -	REVISED -
	DATE -	REVISED -

**STATE OF ILLINOIS
DEPARTMENT OF TRANSPORTATION**

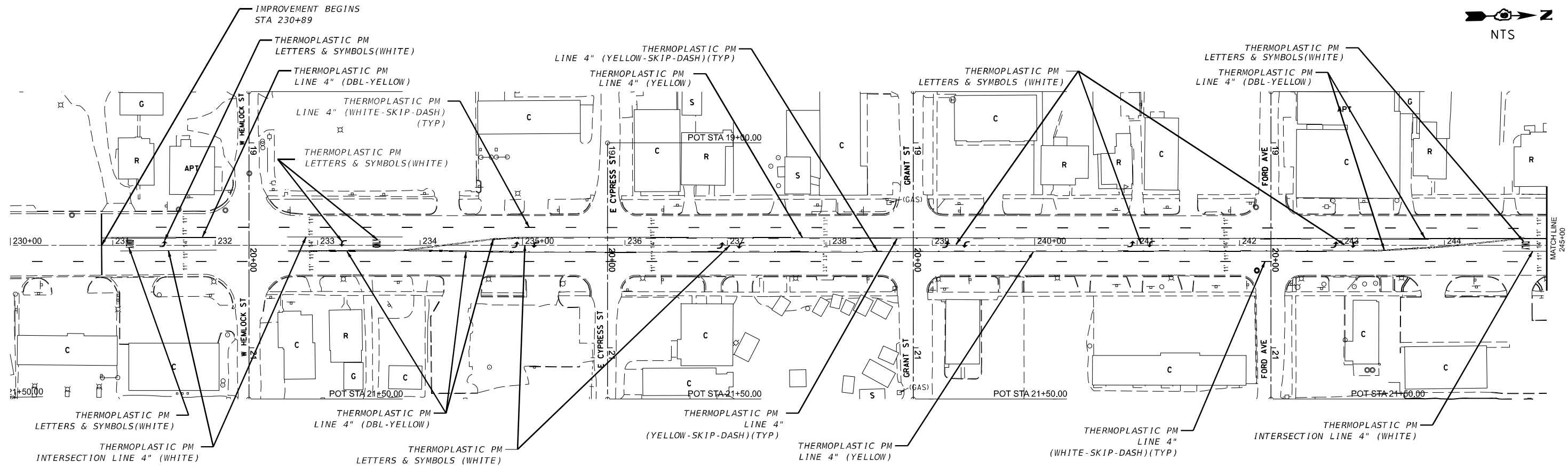
PATCHING SCHEDULE
SURVEY LOCATION PLAN

SCALE: SCALE SHEET 0 OF 1 SHEETS STA. TO STA.

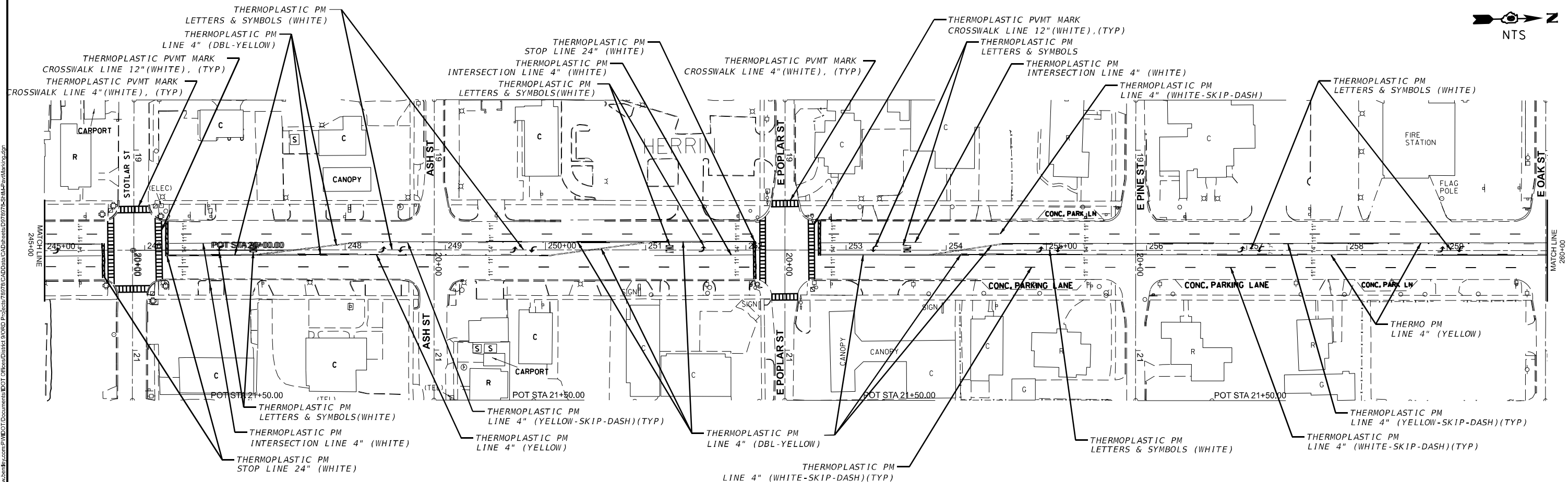
F.A.P. RTE.	SECTION	COUNTY	TOTAL SHEETS	SHEET NO.
726	(129X-2.130)RS-6	WILLIAMSON	36	22
CONTRACT NO. 78978				
ILLINOIS FED. AID PROJECT				



NTS



NTS



MODEL: P:\mtd\104\104_1 (Sheet)
 FILE NAME: P:\mtd\104\104_1.dwg
 PLOT DATE: 5/14/2024

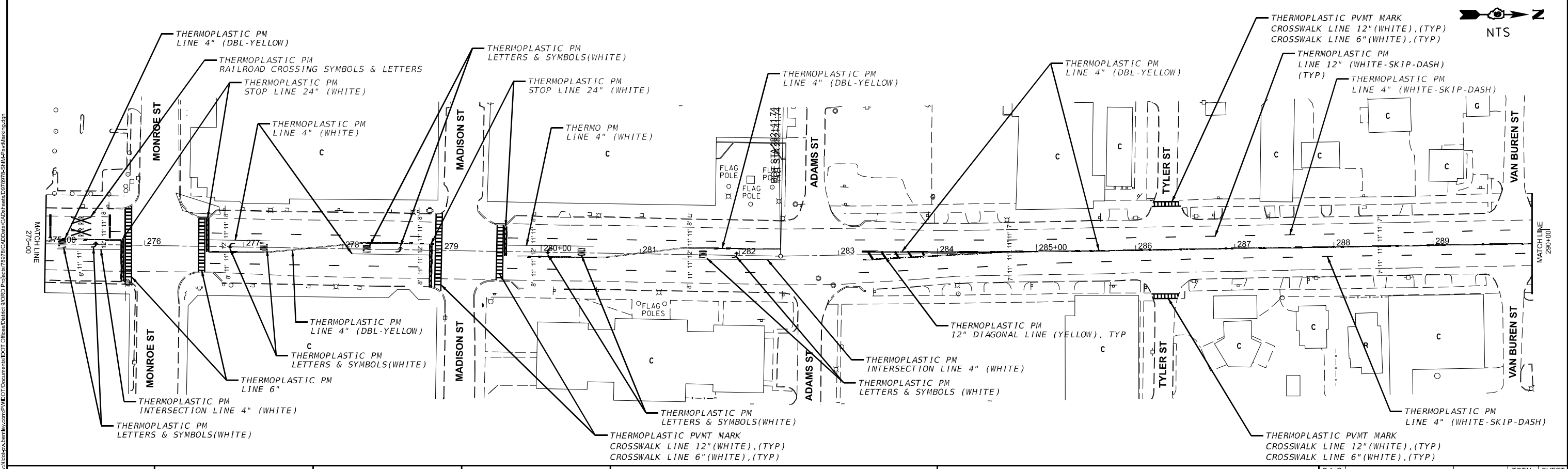
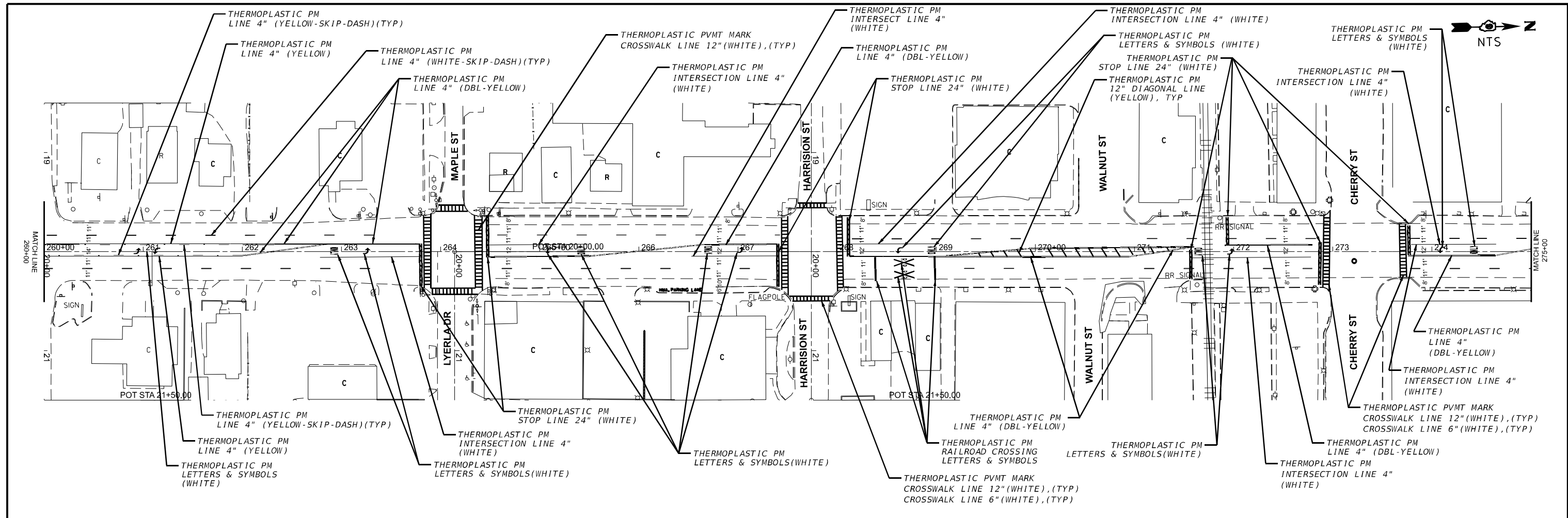
USER NAME = robert handy	DESIGNED -	REVISED -
	DRAWN -	REVISED -
PLOT SCALE = 0.16666633' / in.	CHECKED -	REVISED -
PLOT DATE = 5/14/2024	DATE -	REVISED -

**STATE OF ILLINOIS
DEPARTMENT OF TRANSPORTATION**

PAVEMENT MARKING PLAN

SCALE: NTS SHEET OF SHEETS STA. TO STA.

F.A.P. RTE.	SECTION	COUNTY	TOTAL SHEETS	SHEET NO.
726	(129X-2,130)RS-6	WILLIAMSON	36	23
CONTRACT NO. 78978			ILLINOIS FED. AID PROJECT	



MODEL: P:\mtd\k1\k1\k1_2 (Sheet)
 FILE NAME: P:\mtd\k1\k1\k1_2.dwg
 PROJECT: I:\DOT\Documents\DOT Office\Drawings\DOT\Drawings\1299\1299-RS-6-PAV-MARKING.dwg




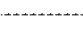
USER NAME = robert.handy	DESIGNED -	REVISED -
PLOT SCALE = 0.16666633' / in.	DRAWN -	REVISED -
PLOT DATE = 5/14/2024	CHECKED -	REVISED -
	DATE -	REVISED -

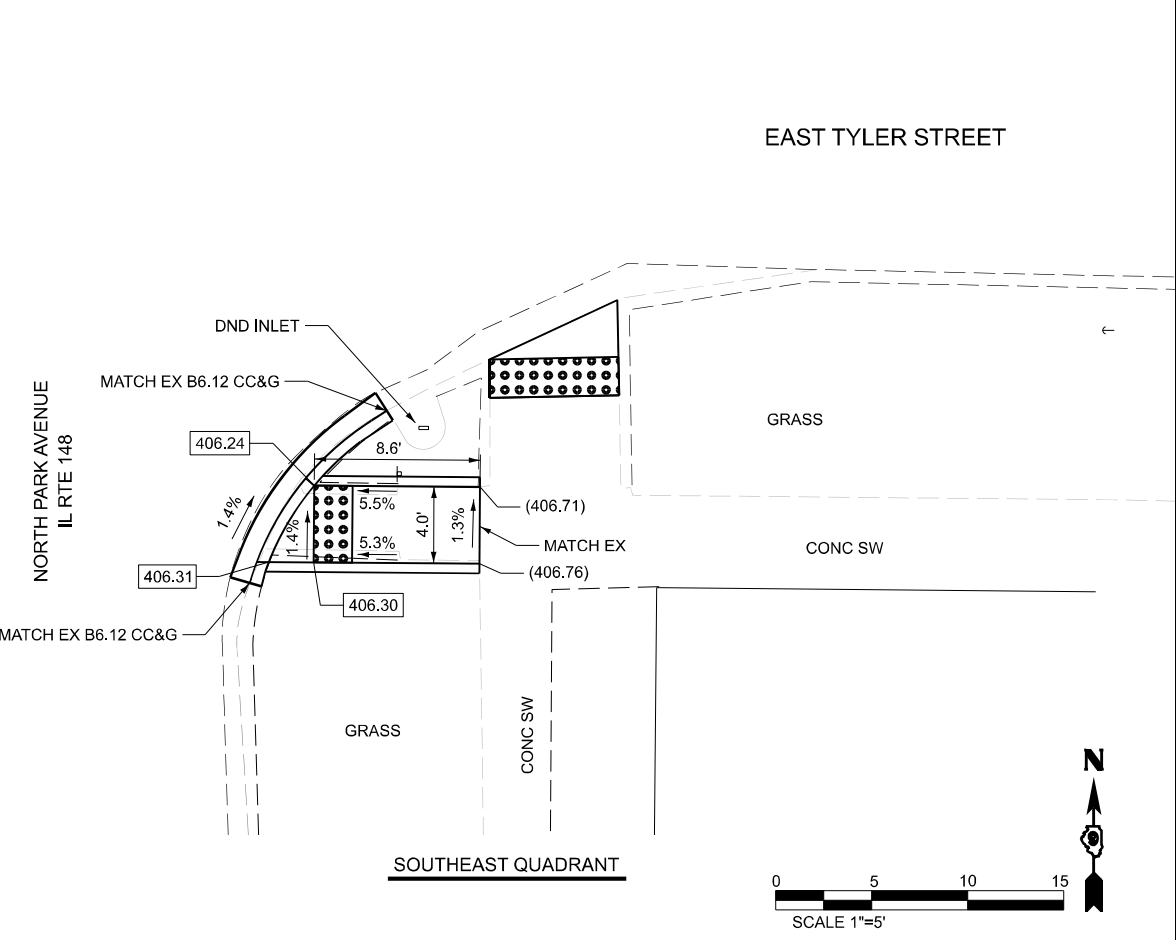
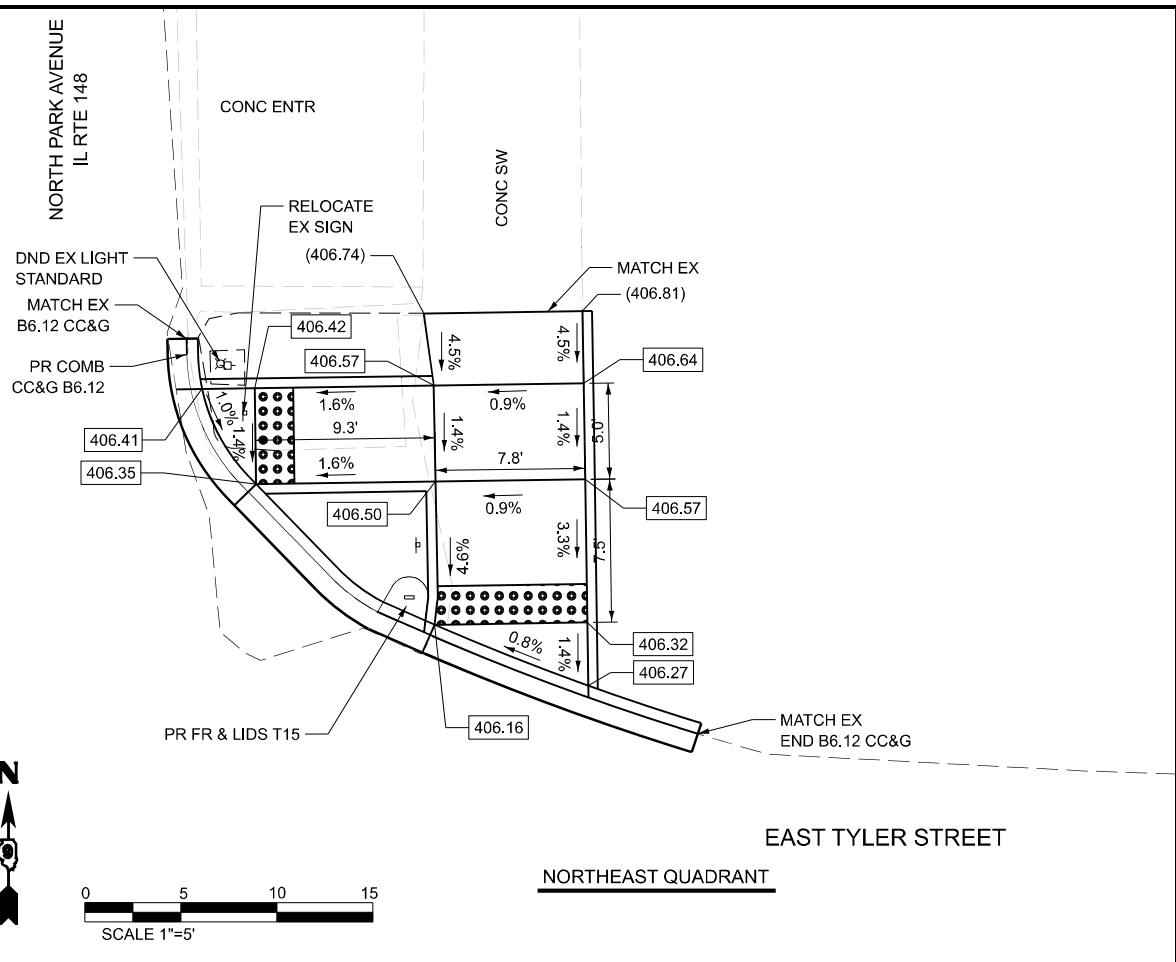
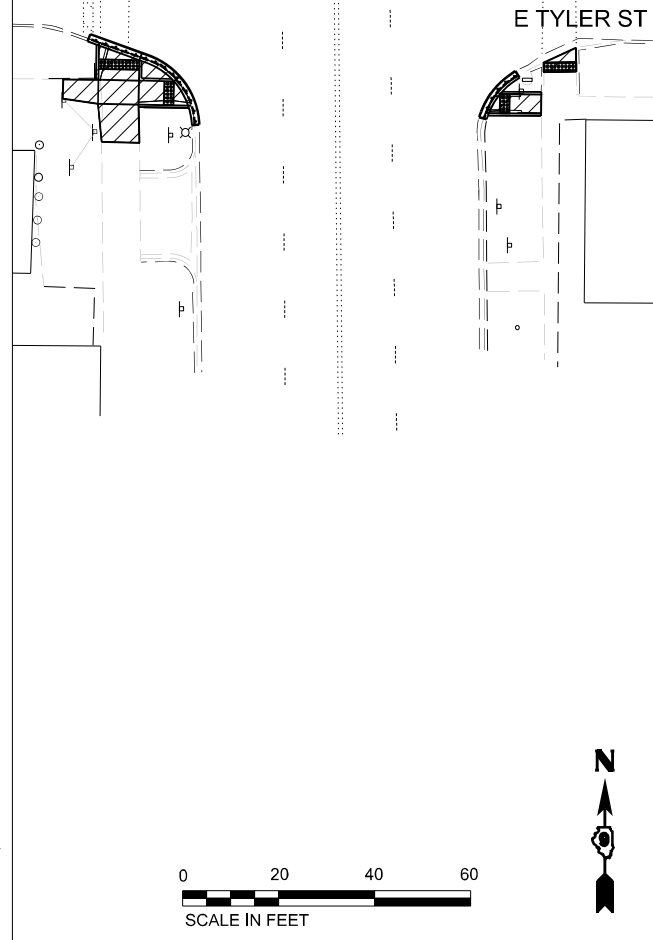
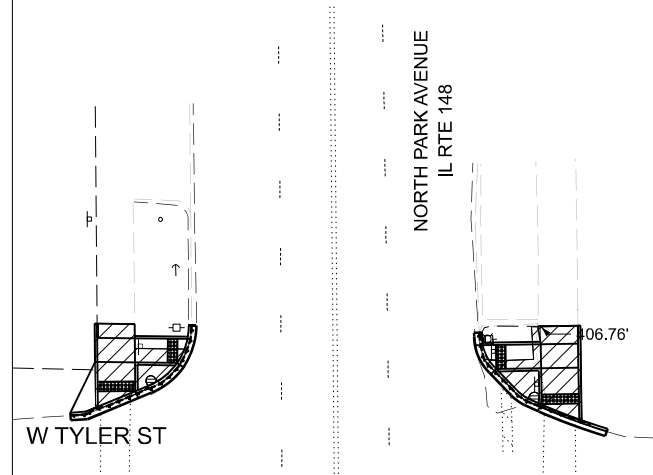
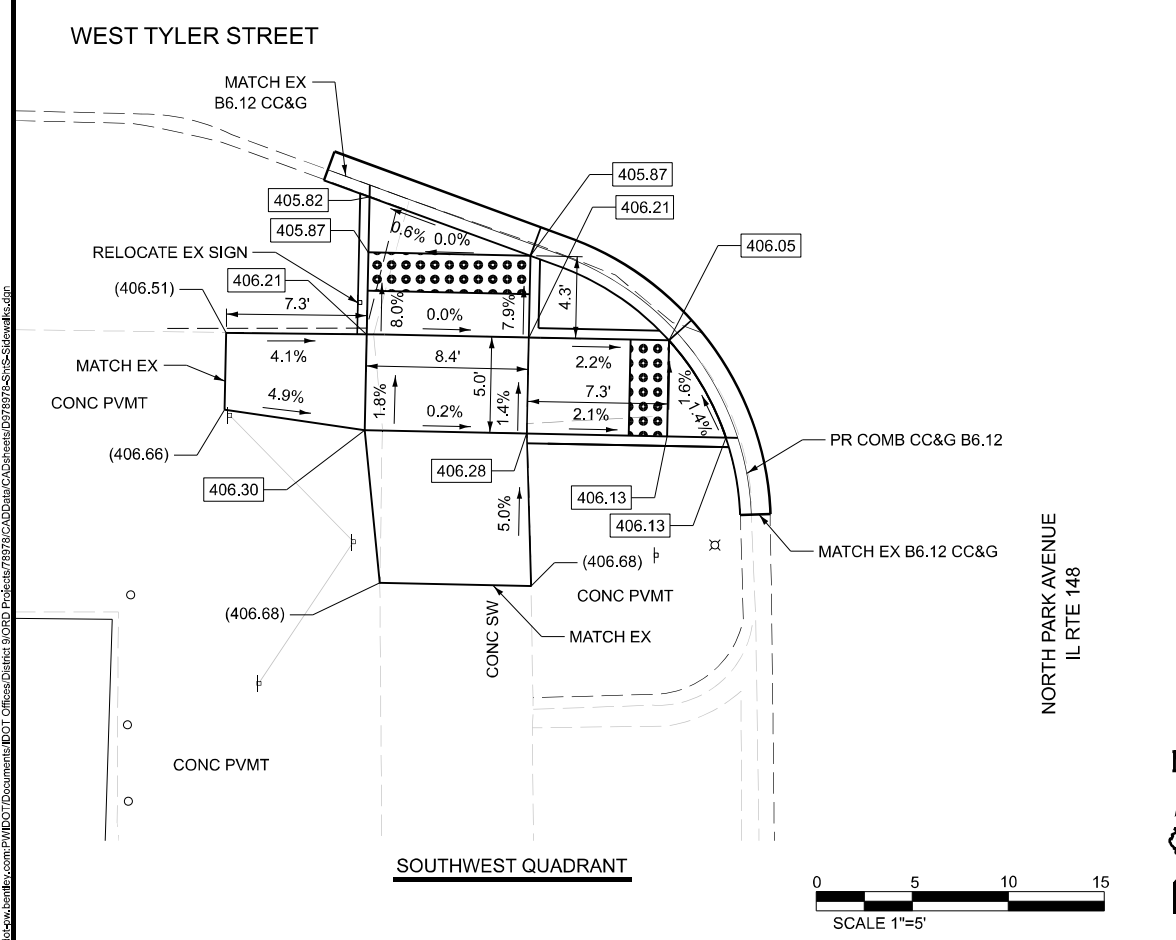
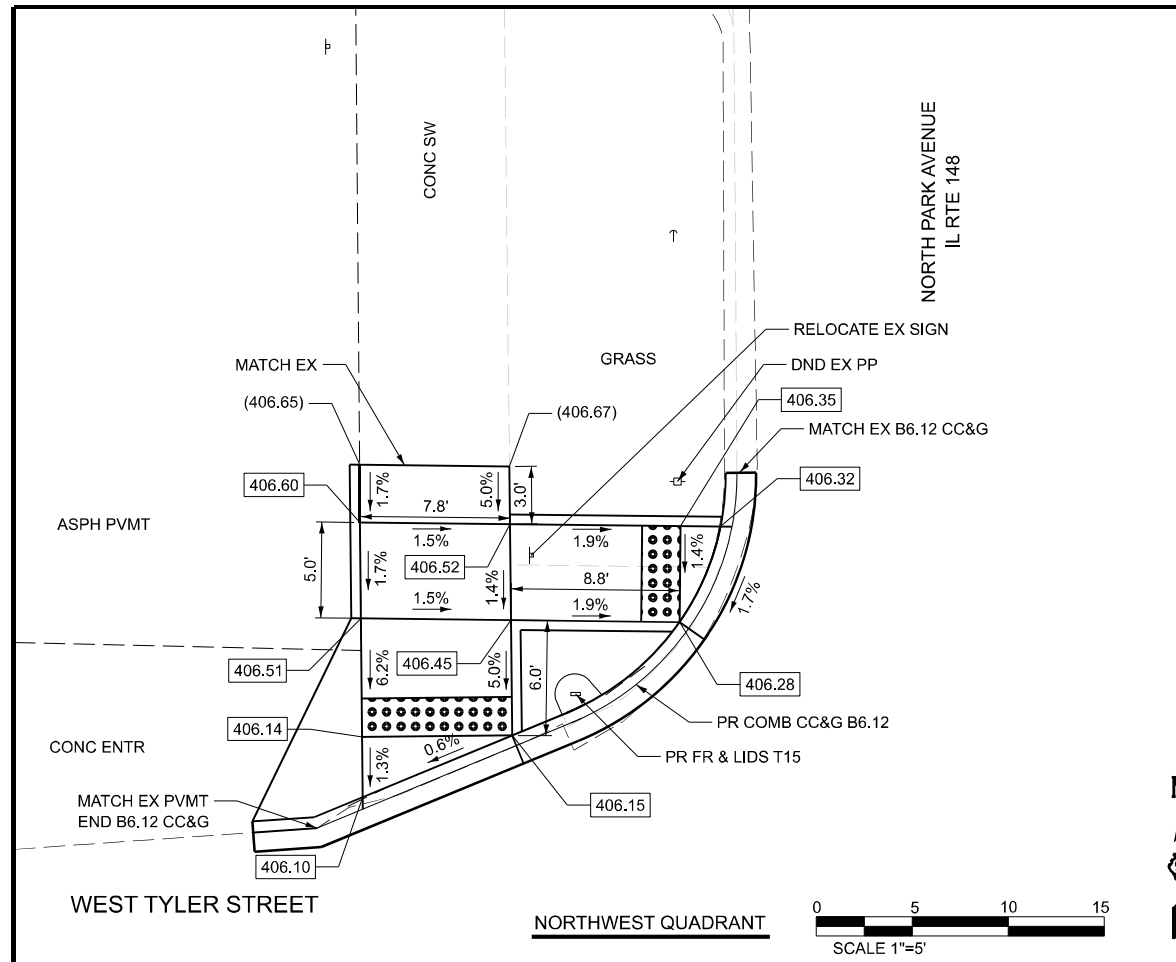
STATE OF ILLINOIS
DEPARTMENT OF TRANSPORTATION

PAVEMENT MARKINGS PLAN

SCALE: NTS SHEET OF SHEETS STA. TO STA.

F.A.P. RTE.	SECTION	COUNTY	TOTAL SHEETS	SHEET NO.
726	(129X-2,130)RS-6	WILLIAMSON	36	24
CONTRACT NO. 78978			ILLINOIS FED. AID PROJECT	

- LEGEND:**
-  DETECTABLE WARNING
 -  SIDEWALK REMOVAL
 -  DRIVEWAY PAVEMENT REMOVAL
 -  CONC CURB & GUTTER REMOVAL
 - (XXX.XX) EXISTING GRADE
 - XXX.XX PROPOSED GRADE
 - PEDESTRIAN PUSH BUTTON
 - REL RELOCATE
 - DND DO NOT DISTURB



**STATE OF ILLINOIS
DEPARTMENT OF TRANSPORTATION**




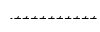
**SIDEWALK RAMP DETAILS
INTERSECTION OF IL RTE 148 AND TYLER STREET**

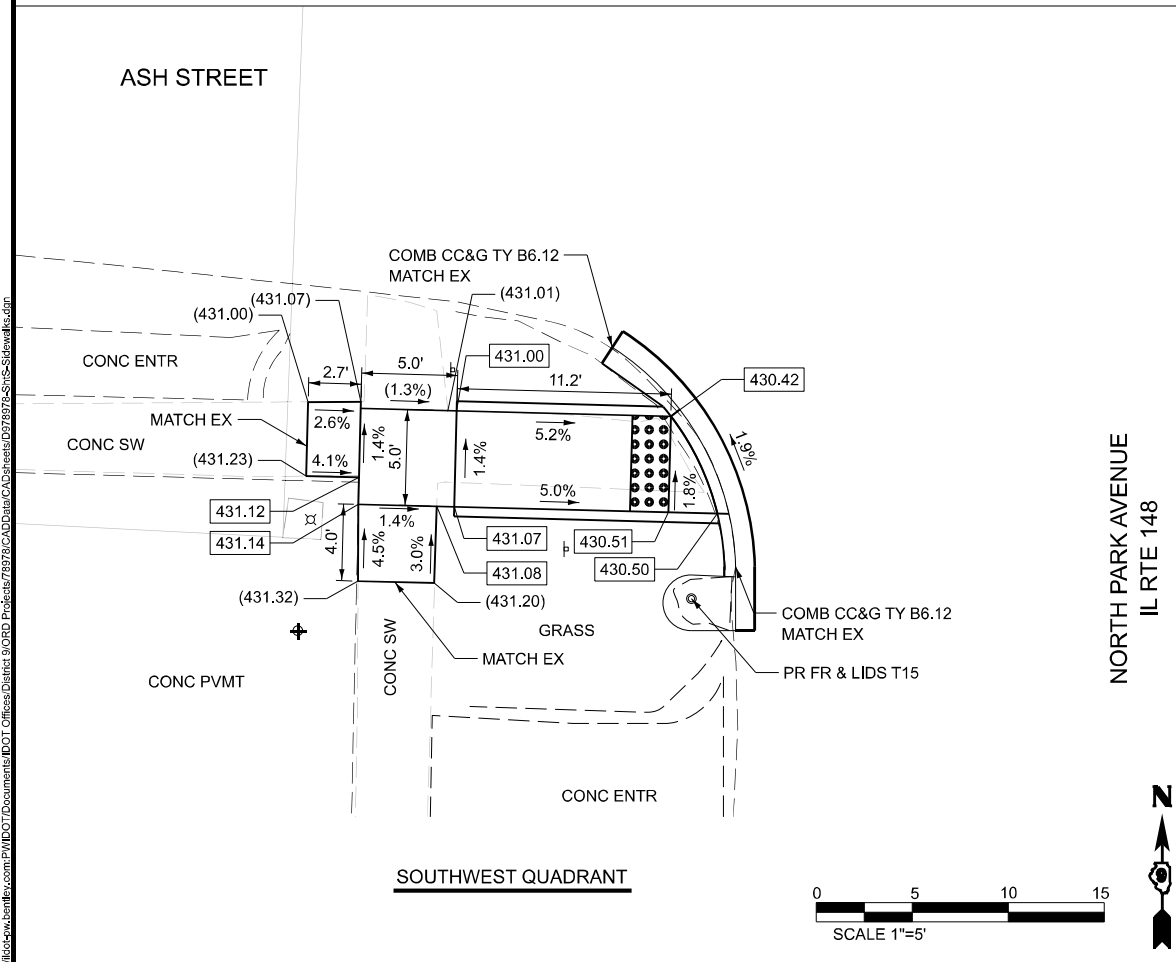
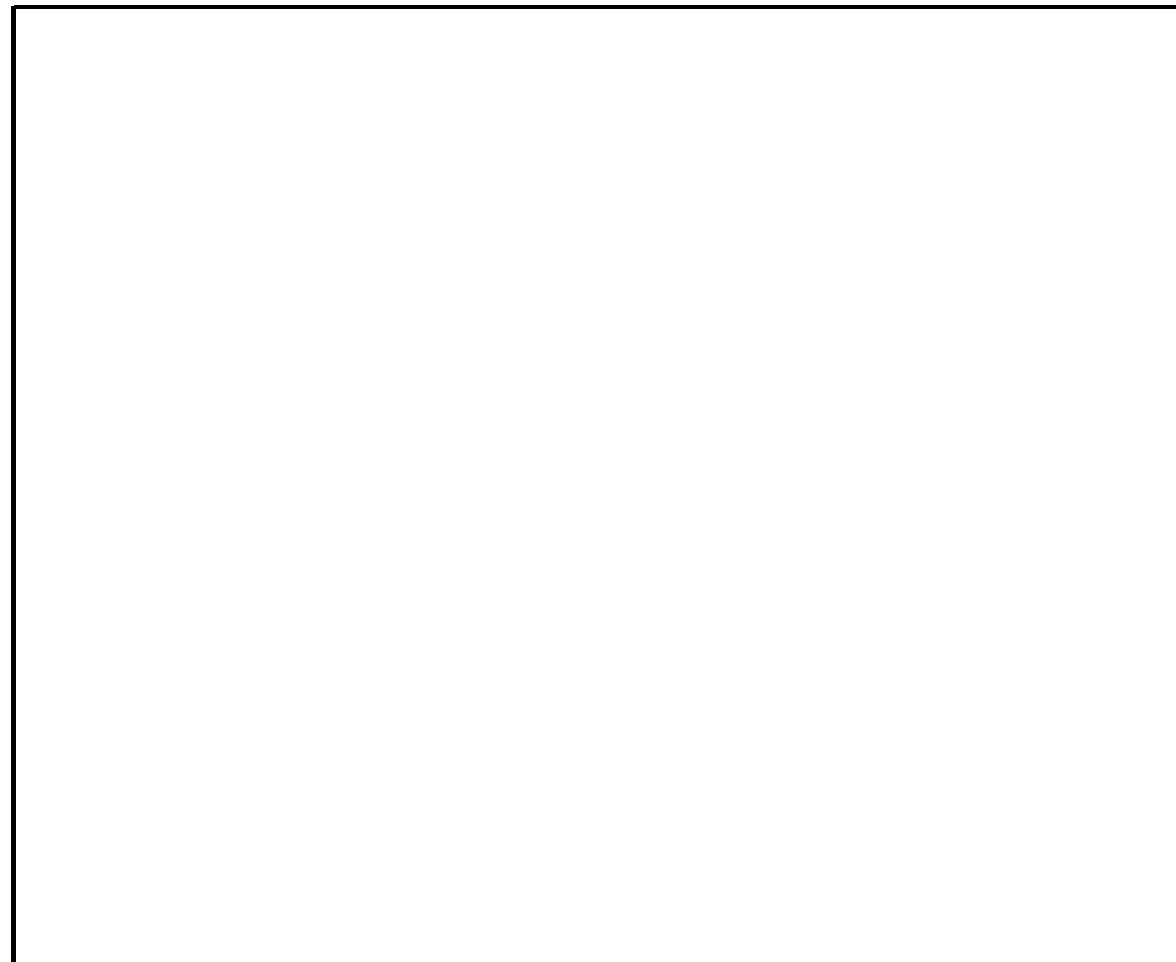
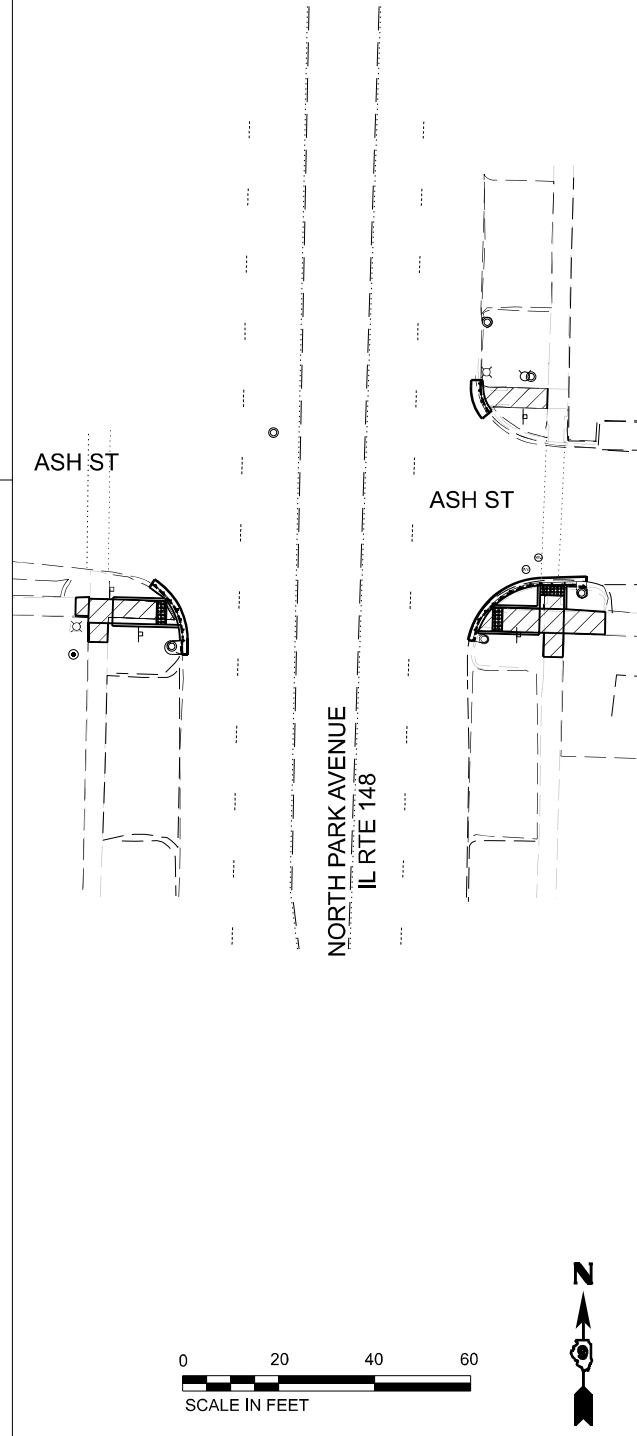
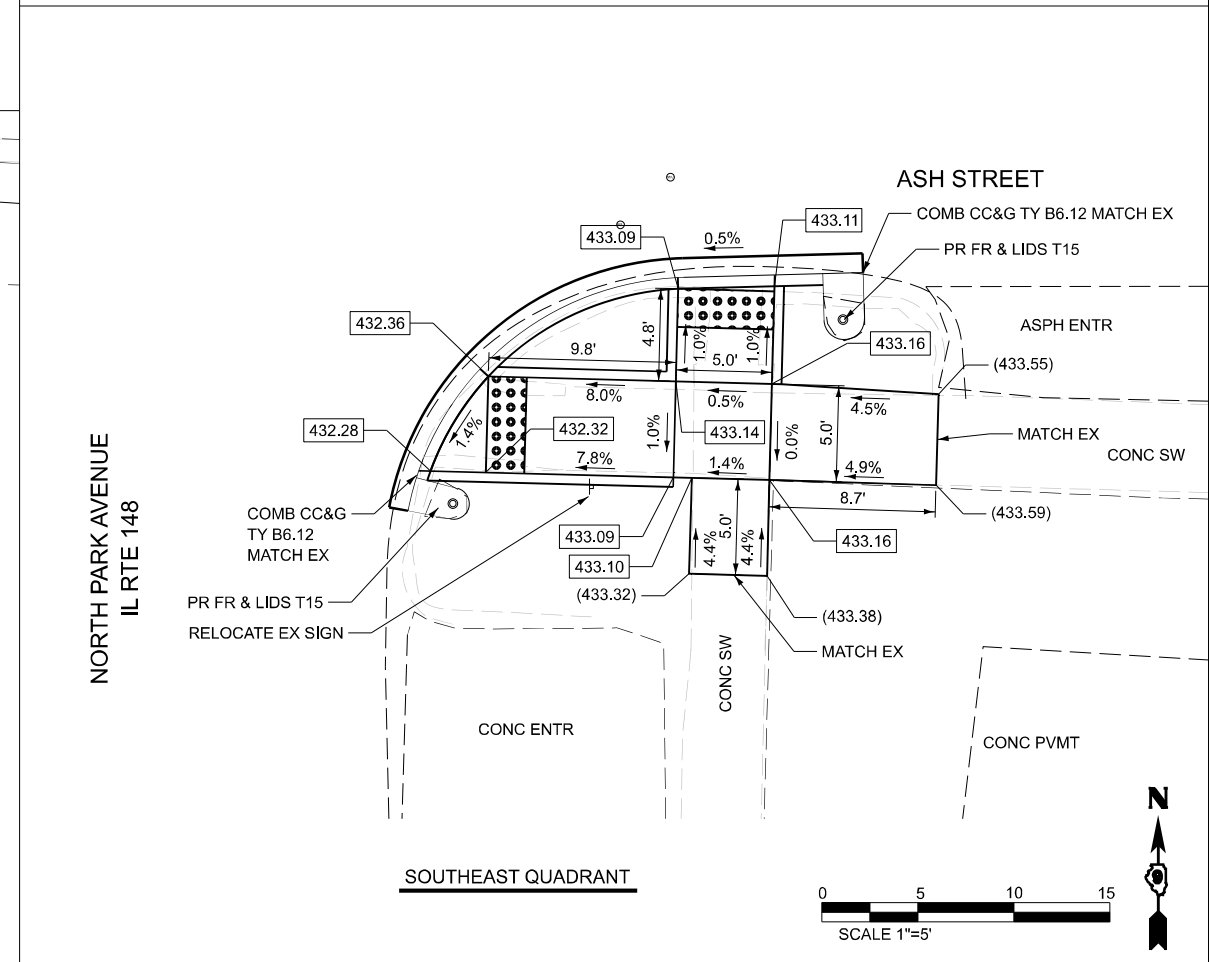
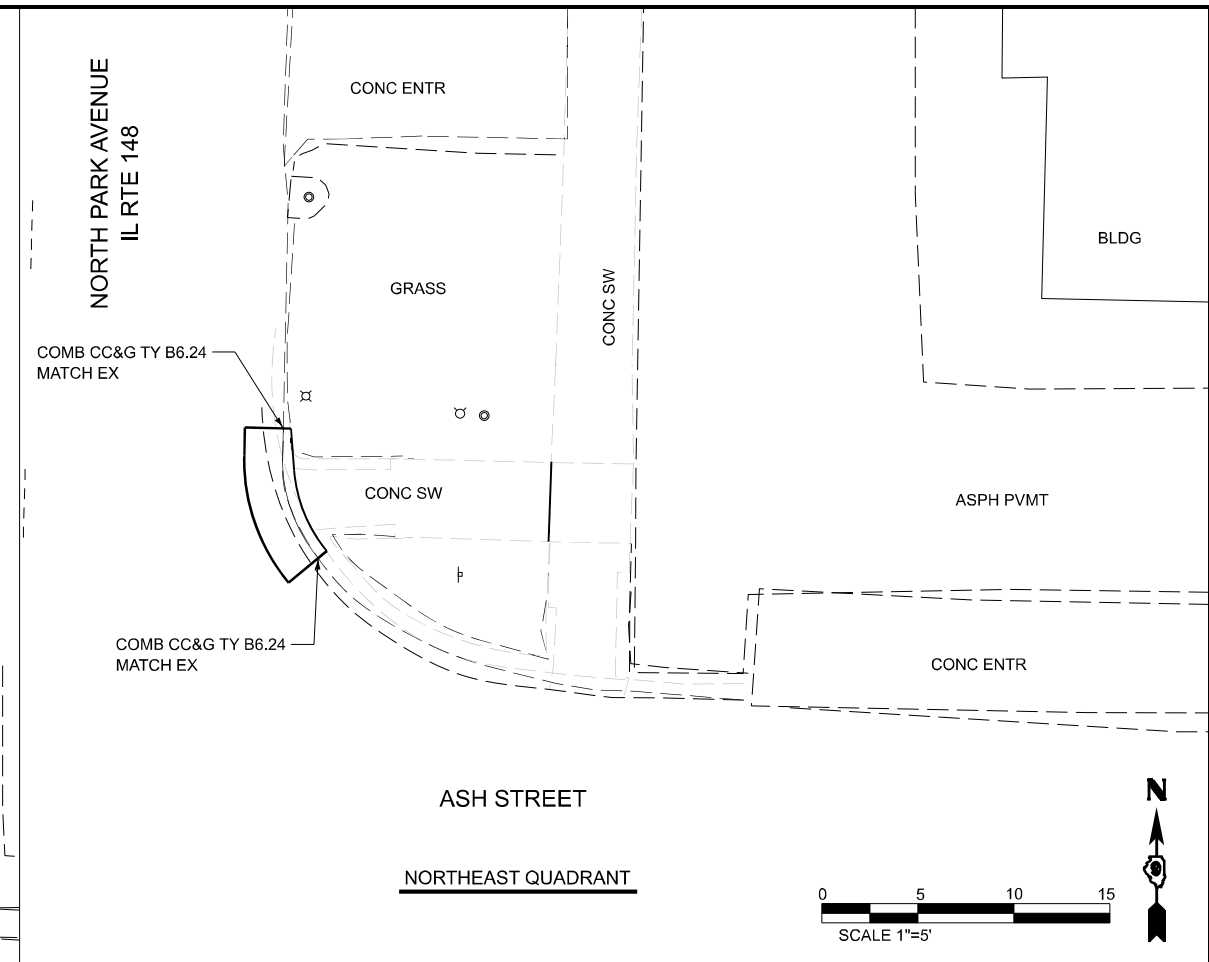
USER NAME = robert.handy	DESIGNED -	REVISED -
PLOT SCALE = 0.16666633' / in.	DRAWN -	REVISED -
PLOT DATE = 5/14/2024	CHECKED -	REVISED -
	DATE -	REVISED -

SCALE:	SHEET	OF	SHEETS	STA.	TO	STA.
--------	-------	----	--------	------	----	------

F.A.P. RTE.	SECTION	COUNTY	TOTAL SHEETS	SHEET NO.
726	(129X-2,130) RS-6	WILLIAMSON	36	28
CONTRACT NO. 78978				
ILLINOIS FED. AID PROJECT				

MODEL: T:\m (Sheet)
 FILE NAME: public\scs\job\p\m\DOT\Documents\DOT Office\Dist1\BORD Project\78978\CAD\Drawings\78978-28-SideWalk.dwg

- LEGEND:**
-  DETECTABLE WARNING
 -  SIDEWALK REMOVAL
 -  DRIVEWAY PAVEMENT REMOVAL
 -  CONC CURB & GUTTER REMOVAL
 - (XXX.XX) EXISTING GRADE
 - XXX.XX PROPOSED GRADE
 - PEDESTRIAN PUSH BUTTON
 - REL RELOCATE
 - DND DO NOT DISTURB



MODEL: Ash (Sheet)
 FILE NAME: P:\MIDOT\Documents\DOT Office\Sheet\BORD Project\78978\CAD\Drawings\78978\78978-245-Sidewalk.dwg

USER NAME = robert.handy	DESIGNED -	REVISED -
PLOT SCALE = 0.16666633 / in.	DRAWN -	REVISED -
PLOT DATE = 5/14/2024	CHECKED -	REVISED -
	DATE -	REVISED -

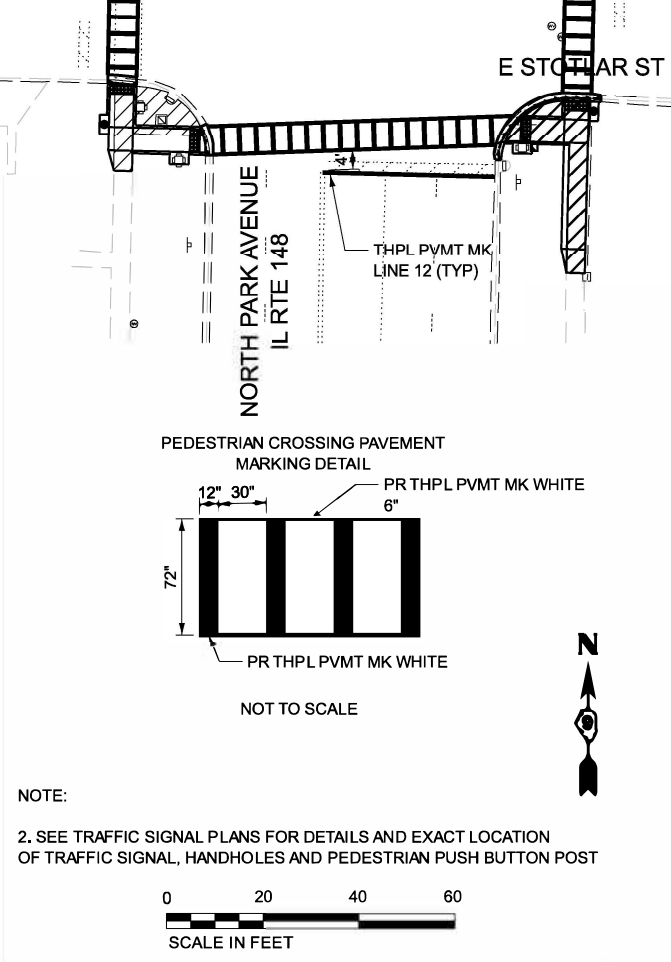
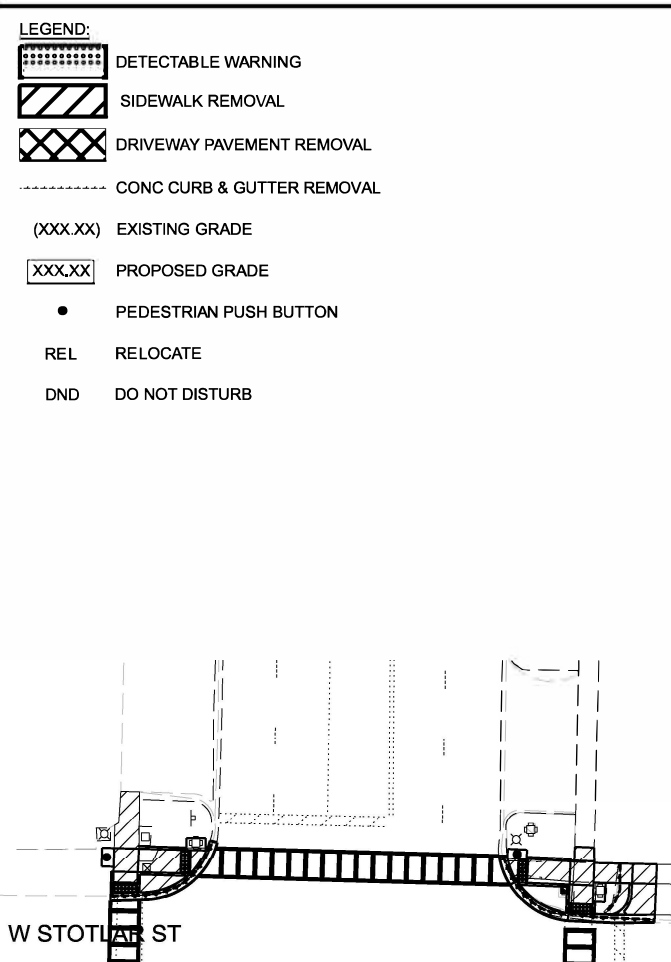
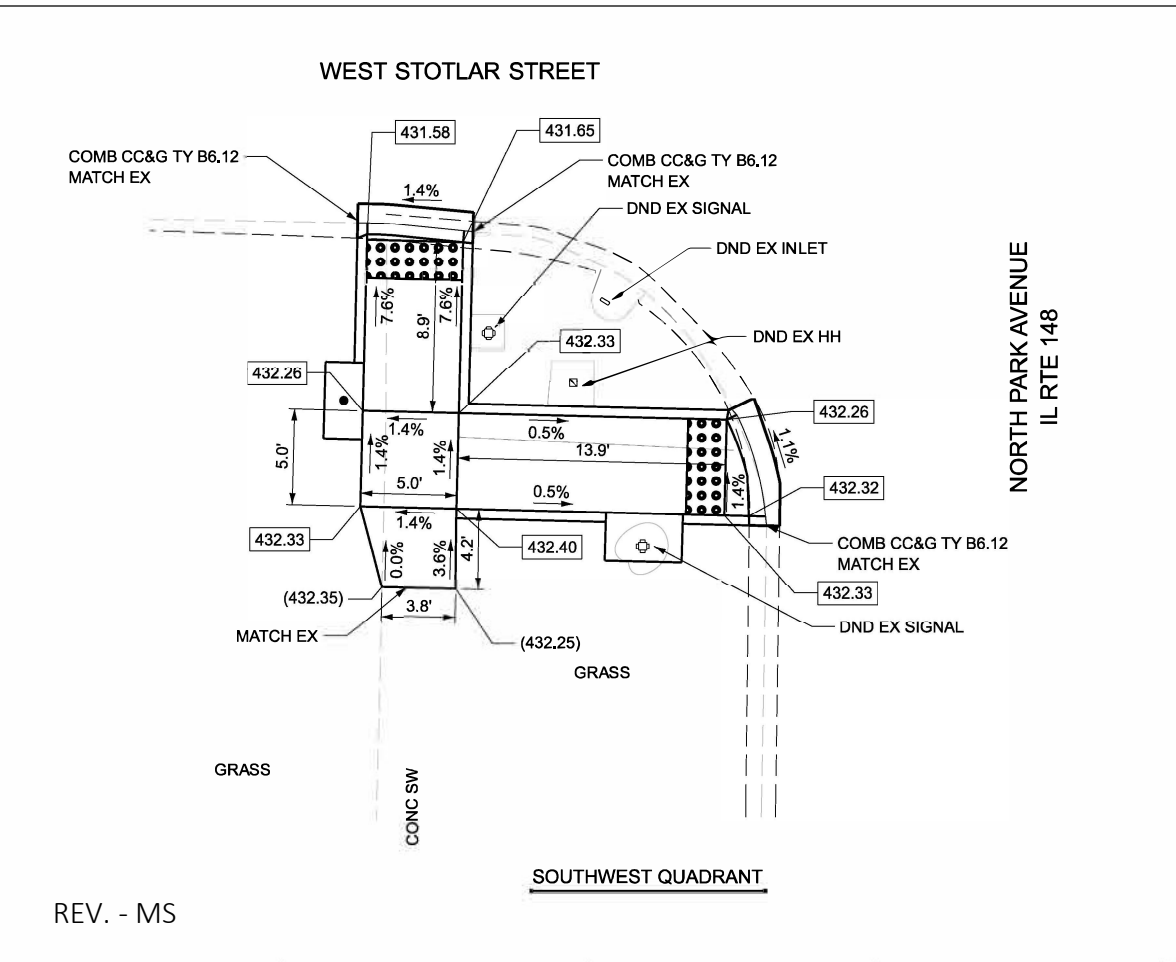
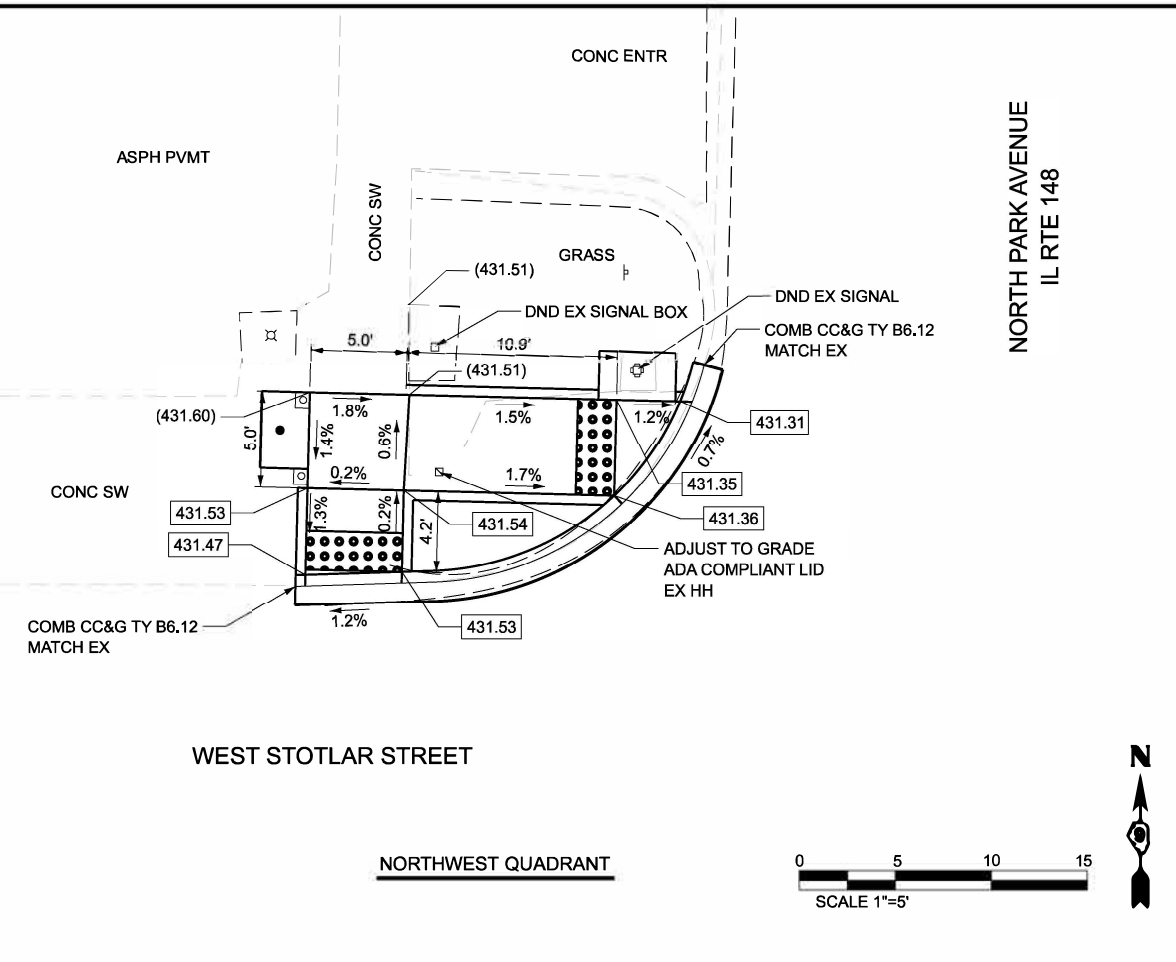
**STATE OF ILLINOIS
DEPARTMENT OF TRANSPORTATION**

**SIDEWALK RAMP DETAILS
INTERSECTION OF IL RTE 148 AND ASH STREET**

SCALE: SHEET OF SHEETS STA. TO STA.

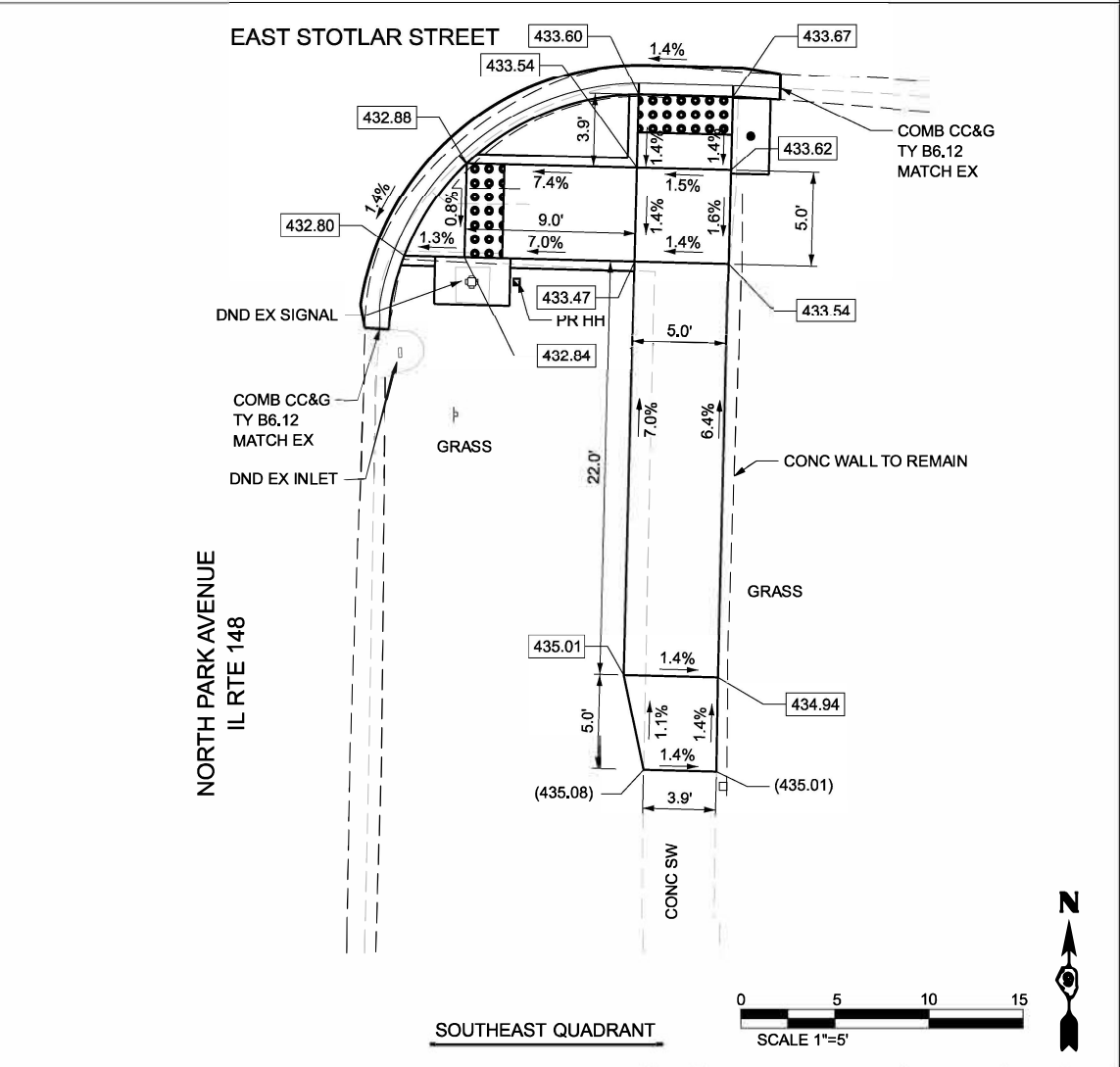
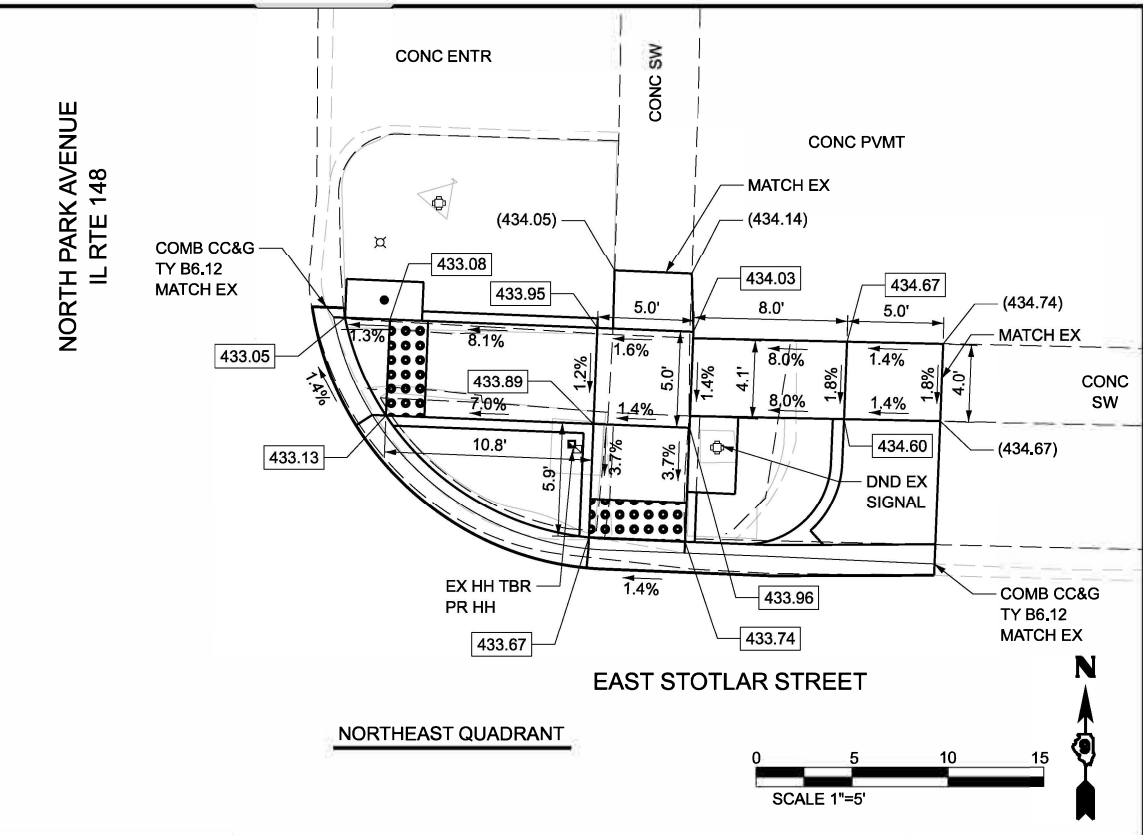
F.A.P. RTE.	SECTION	COUNTY	TOTAL SHEETS	SHEET NO.
726	(129X-2,130) RS-6	WILLIAMSON	36	29
CONTRACT NO. 78978				
ILLINOIS FED. AID PROJECT				

MODEL: \\stark\IT\...
 FILE NAME: ...



NOTE:
 2. SEE TRAFFIC SIGNAL PLANS FOR DETAILS AND EXACT LOCATION OF TRAFFIC SIGNAL, HANDHOLES AND PEDESTRIAN PUSH BUTTON POST

STATE OF ILLINOIS
 DEPARTMENT OF TRANSPORTATION






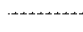
SIDWALK RAMP DETAILS
 INTERSECTION OF IL RTE 148 AND STOTLAR STREET

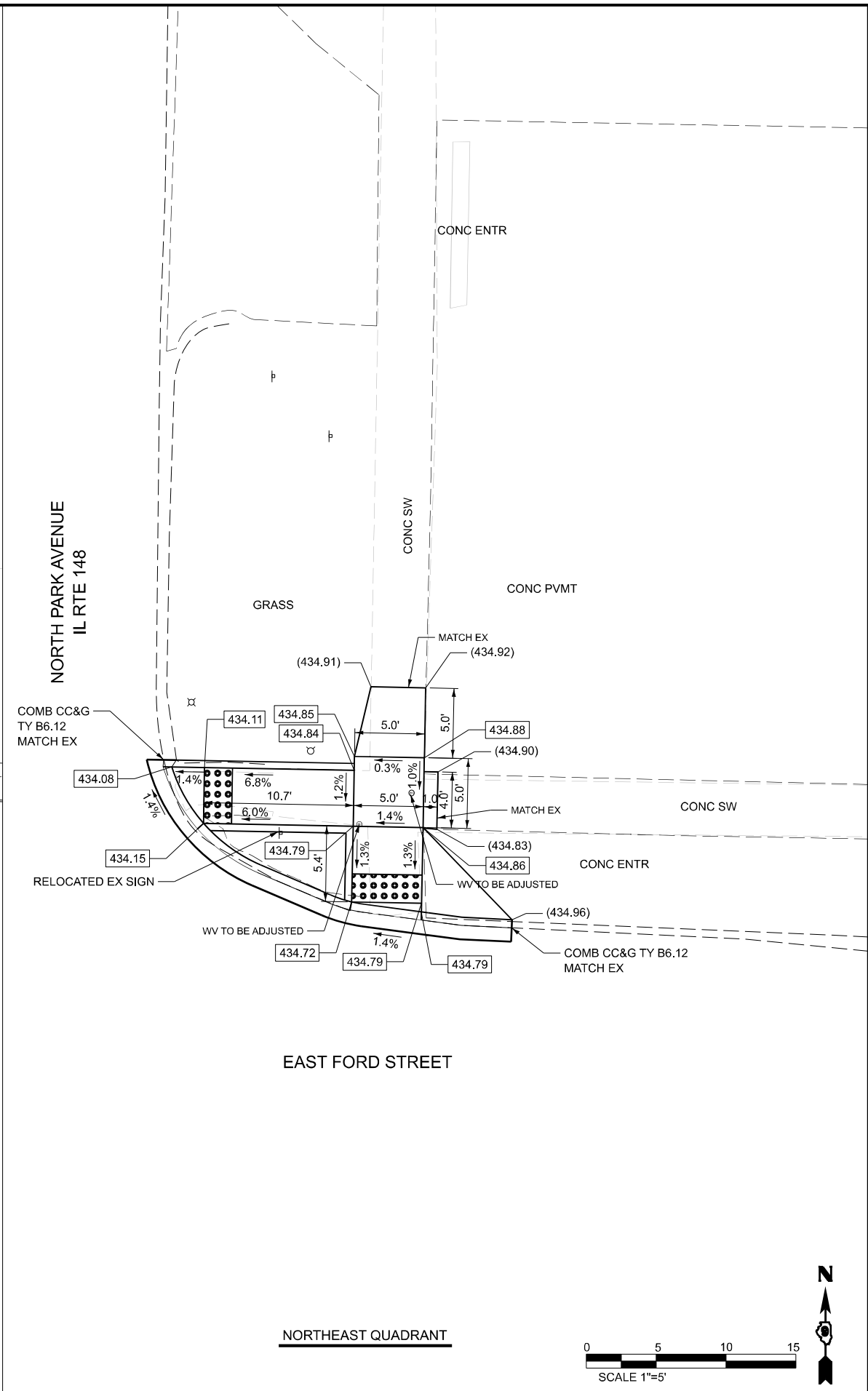
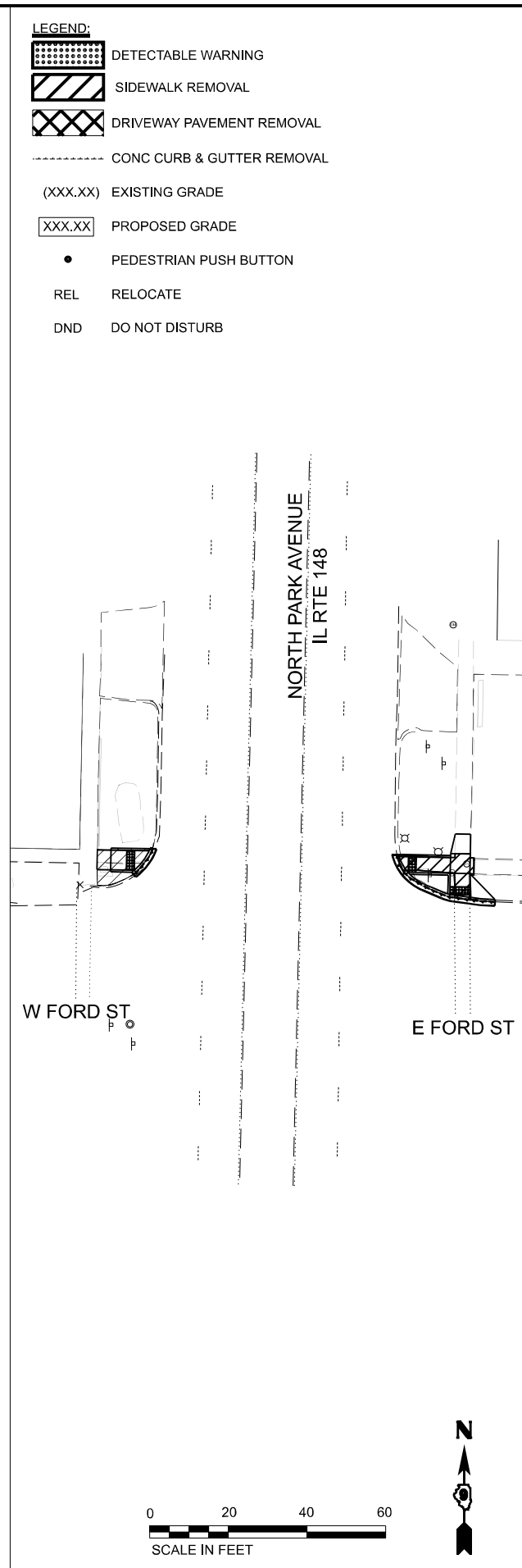
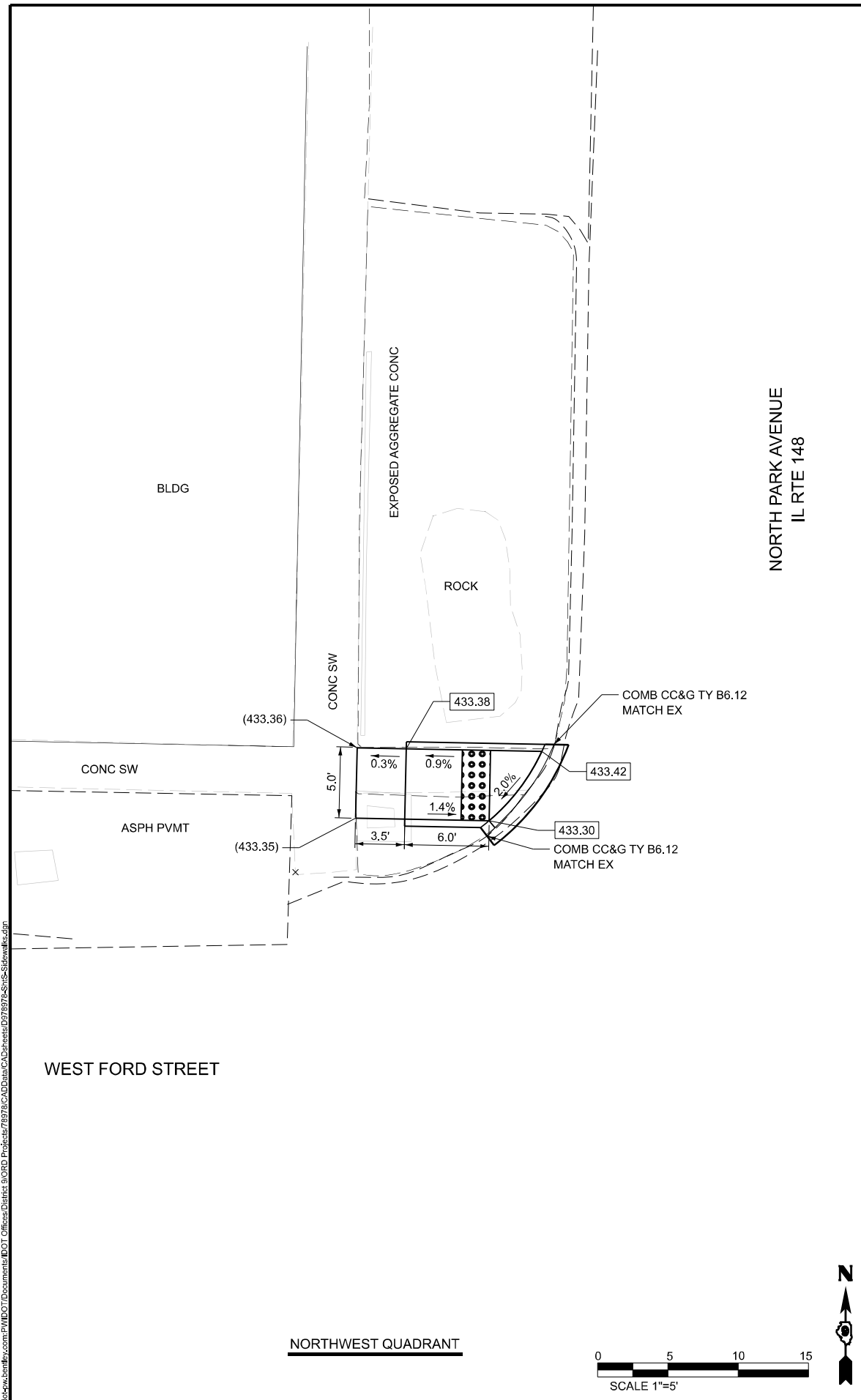
REV. - MS

USER NAME = robert.handy	DESIGNED -	REVISED -
PLOT SCALE = 0.16666633 / in.	DRAWN -	REVISED -
PLOT DATE = 5/14/2024	CHECKED -	REVISED -
	DATE -	REVISED -

SCALE:	SHEET	OF	SHEETS	STA.	TO	STA.
--------	-------	----	--------	------	----	------

F.A.P. RTE.	SECTION	COUNTY	TOTAL SHEETS	SHEET NO.
726	(129X-2,130) RS-6	WILLIAMSON	36	30
CONTRACT NO. 78978				
ILLINOIS FED. AID PROJECT				

- LEGEND:**
-  DETECTABLE WARNING
 -  SIDEWALK REMOVAL
 -  DRIVEWAY PAVEMENT REMOVAL
 -  CONC CURB & GUTTER REMOVAL
 - (XXX.XX) EXISTING GRADE
 - XXX.XX PROPOSED GRADE
 - PEDESTRIAN PUSH BUTTON
 - REL RELOCATE
 - DND DO NOT DISTURB







MODEL: Ford (Sheet)
 FILE NAME: p:\projects\78978\CADD\Drawings\DOT\Office\Drawings\78978\CADD\Drawings\78978\78978-Sidewalk.dgn

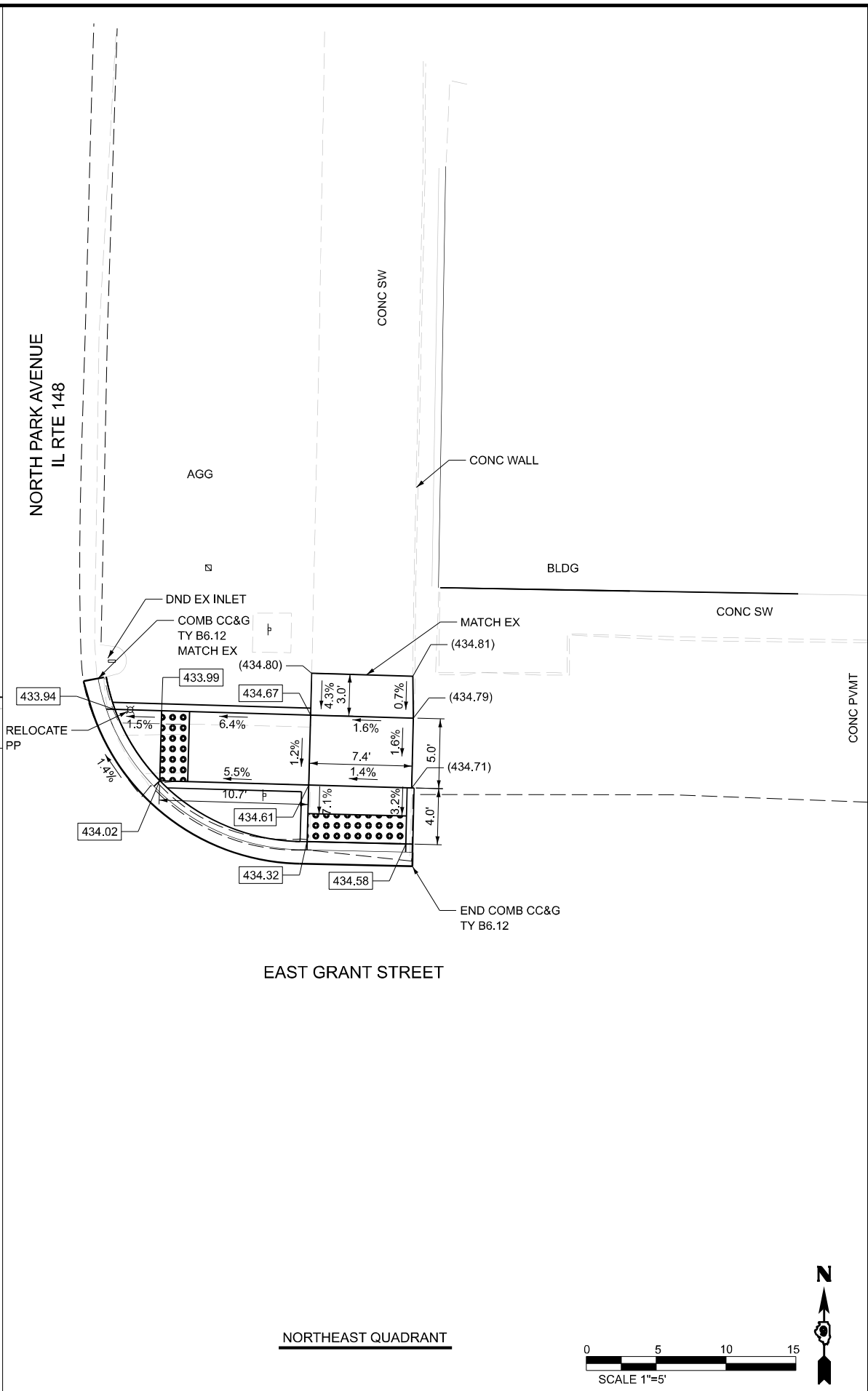
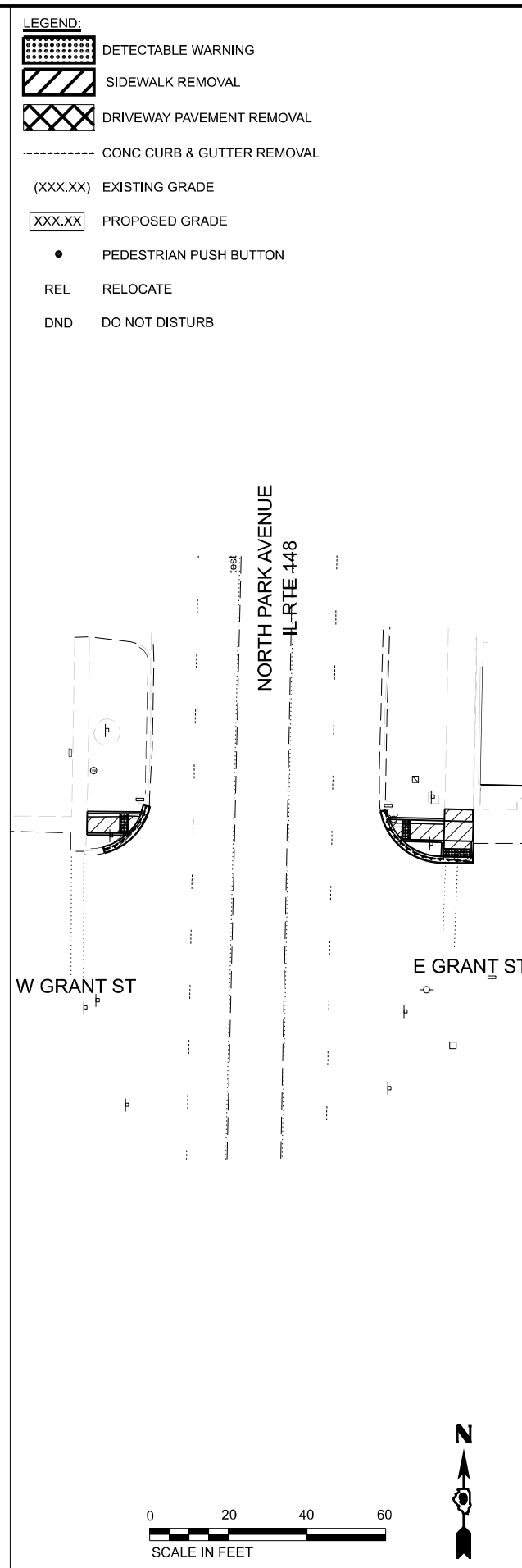
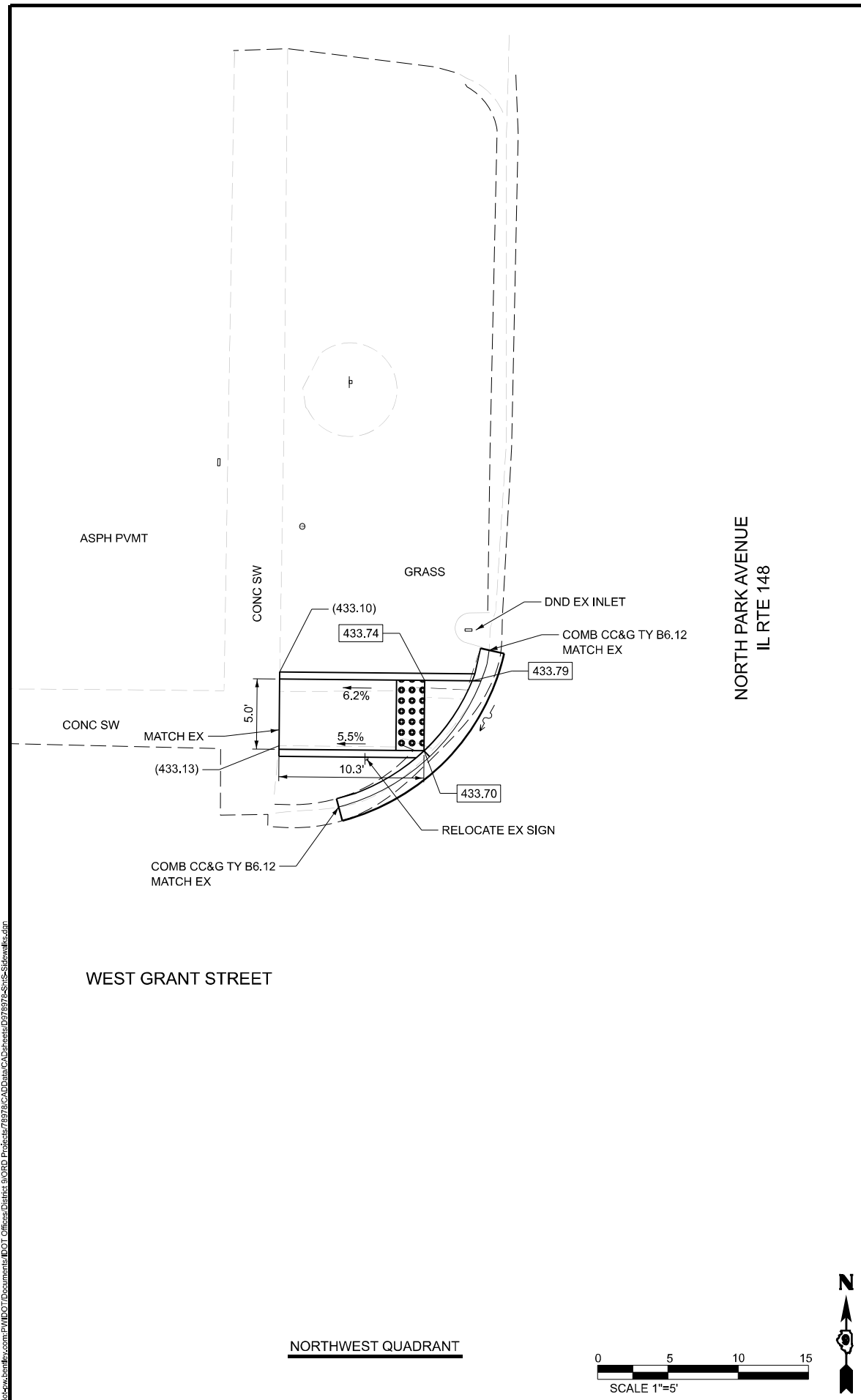
USER NAME = robert.handy	DESIGNED -	REVISED -
DRAWN -	REVISOR -	REVISOR -
PLOT SCALE = 0.16666633' / in.	CHECKED -	REVISOR -
PLOT DATE = 5/14/2024	DATE -	REVISOR -

**STATE OF ILLINOIS
DEPARTMENT OF TRANSPORTATION**

SIDEWALK RAMP DETAILS INTERSECTION OF IL RTE 148 AND FORD STREET			
SCALE:	SHEET	OF SHEETS	STA. TO STA.

F.A.P. RTE.	SECTION	COUNTY	TOTAL SHEETS	SHEET NO.
726	(129X-2,130) RS-6	WILLIAMSON	36	31
CONTRACT NO. 78978				
ILLINOIS FED. AID PROJECT				

- LEGEND:**
-  DETECTABLE WARNING
 -  SIDEWALK REMOVAL
 -  DRIVEWAY PAVEMENT REMOVAL
 -  CONC CURB & GUTTER REMOVAL
 - (XXX.XX) EXISTING GRADE
 - XXX.XX PROPOSED GRADE
 - PEDESTRIAN PUSH BUTTON
 - REL RELOCATE
 - DND DO NOT DISTURB



MODEL: CurInt (Sheet)
 FILE NAME: P:\Public\work\78978\78978.dwg
 PROJECT: 78978
 DRAWN: robert.handy
 CHECKED: robert.handy
 DATE: 5/14/2024

USER NAME = robert.handy	DESIGNED -	REVISED -
PLOT SCALE = 0.16666633' / in.	DRAWN -	REVISED -
PLOT DATE = 5/14/2024	CHECKED -	REVISED -
	DATE -	REVISED -

STATE OF ILLINOIS
DEPARTMENT OF TRANSPORTATION

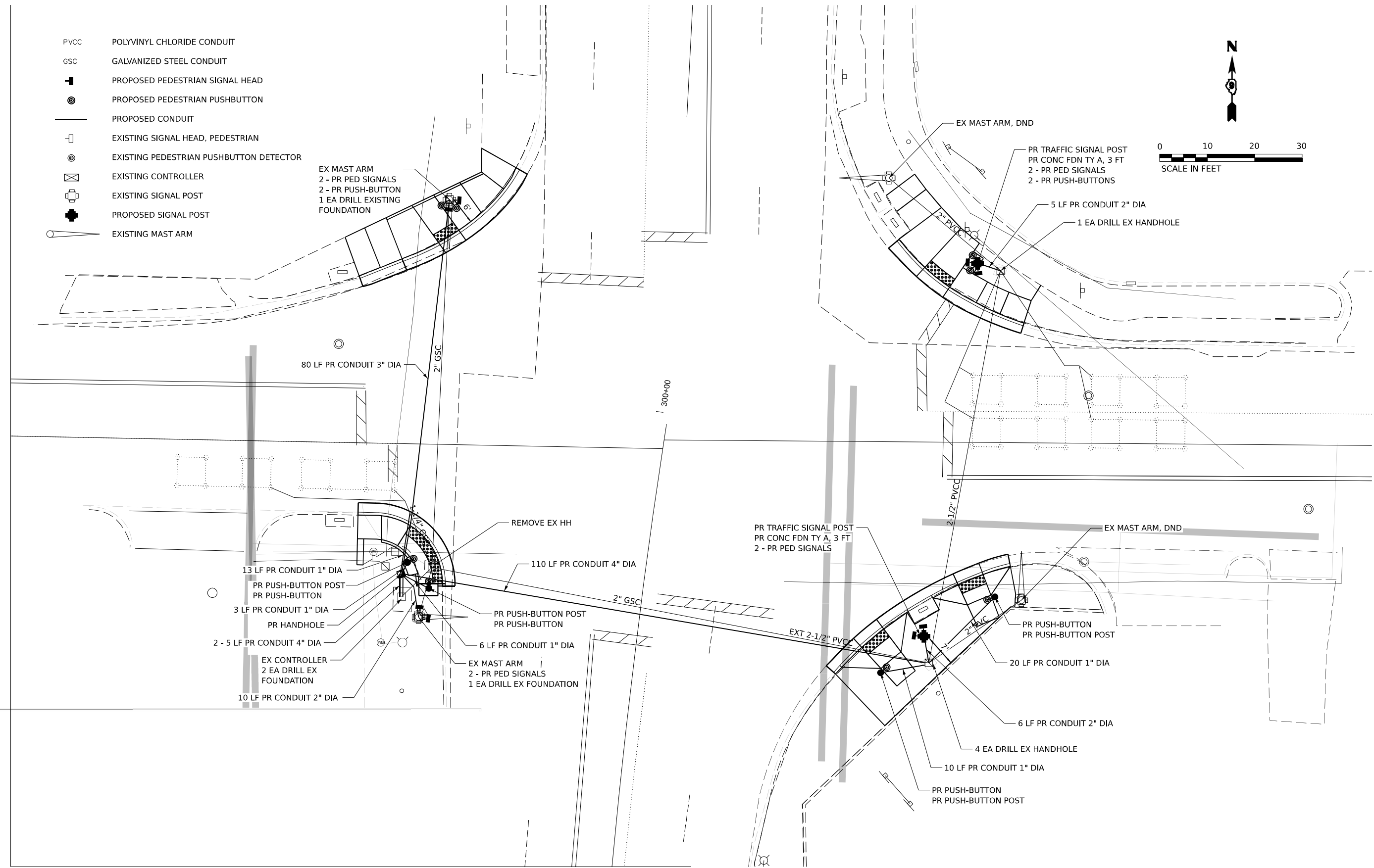
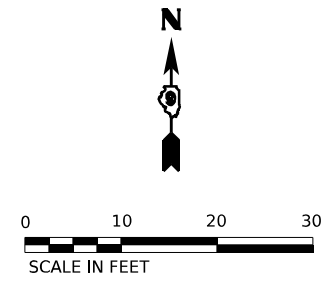
SIDEWALK RAMP DETAILS
INTERSECTION OF IL RTE 148 AND GRANT STREET

SCALE: SHEET OF SHEETS STA. TO STA.

F.A.P. RTE.	SECTION	COUNTY	TOTAL SHEETS	SHEET NO.
726	(129X-2,130) RS-6	WILLIAMSON	36	32
CONTRACT NO. 78978				
ILLINOIS FED. AID PROJECT				

- PVCC POLYVINYL CHLORIDE CONDUIT
- GSC GALVANIZED STEEL CONDUIT
- PROPOSED PEDESTRIAN SIGNAL HEAD
- PROPOSED PEDESTRIAN PUSHBUTTON
- PROPOSED CONDUIT
- EXISTING SIGNAL HEAD, PEDESTRIAN
- EXISTING PEDESTRIAN PUSHBUTTON DETECTOR
- EXISTING CONTROLLER
- EXISTING SIGNAL POST
- PROPOSED SIGNAL POST
- EXISTING MAST ARM

EX MAST ARM
2 - PR PED SIGNALS
2 - PR PUSH-BUTTON
1 EA DRILL EXISTING FOUNDATION



MODEL: Traffic_Signals_Herrin (Sheet)
 FILE NAME: P:\GIS\Projects\Traffic_Signals_Herrin\Traffic_Signals_Herrin.dwg

USER NAME = robert.handy	DESIGNED -	REVISED -
	DRAWN -	REVISED -
PLOT SCALE = 0.16666633' / in.	CHECKED -	REVISED -
PLOT DATE = 5/14/2024	DATE -	REVISED -

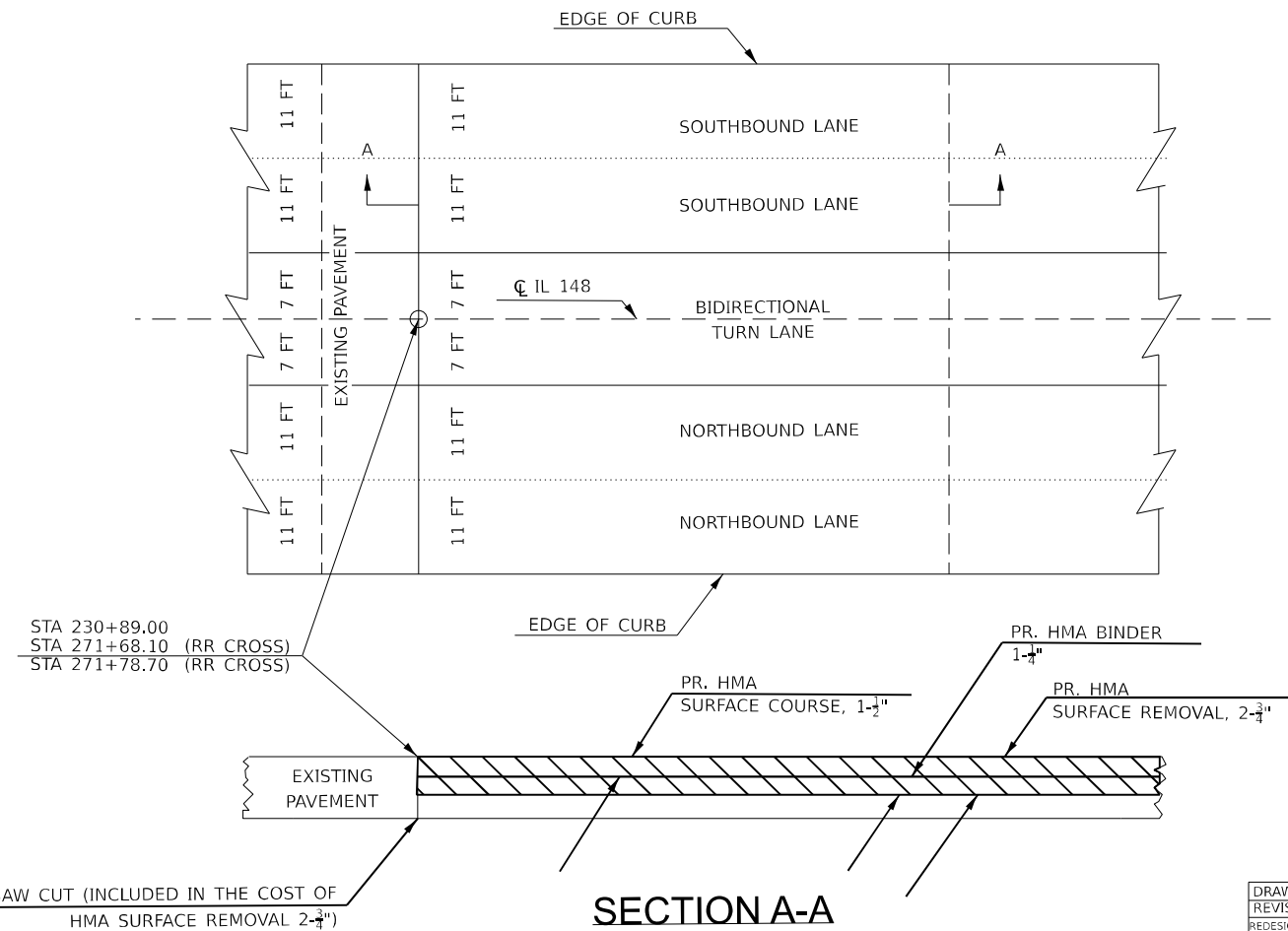
**STATE OF ILLINOIS
DEPARTMENT OF TRANSPORTATION**

**HERRIN STREET
TRAFFIC SIGNAL DETAILS**

SCALE: SHEET OF SHEETS STA. TO STA.

F.A.P. RTE.	SECTION	COUNTY	TOTAL SHEETS	SHEET NO.
726	(129X-2,130)RS-6	WILLIAMSON	36	33
CONTRACT NO. 78978				
ILLINOIS FED. AID PROJECT				

INLAY DETAIL

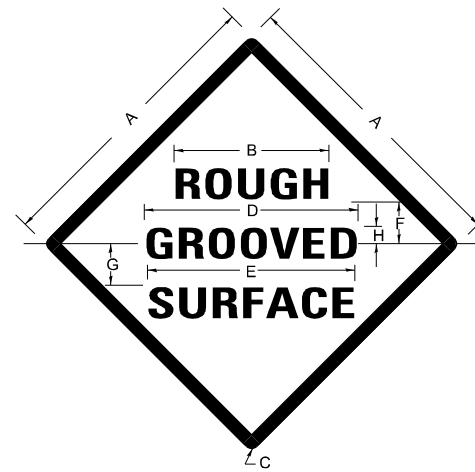


SECTION A-A

REVISIONS	
DRAWN	11-25-22
REVISED	
REDESIGNED	
RESIZED	

STD. 9-41

ILLINOIS STANDARD ROUGH GROOVED SURFACE SIGN



COLORS

LEGEND AND BORDER- BLACK NON-REFLECTORIZED
BACKGROUND- ORANGE REFLECTORIZED

SIGN SIZE	DIMENSIONS							
	A	B	C	D	E	F	G	H
48X48	48.0	24.1	3.0	34.0	33.0	6.0	13.0	3.5

SIGN SIZE	SERIES LINES			MARGIN	BORDER	BLANK STD.
	1	2	3			
48X48	7C	7C	7C	0.8	1.2	B4-48D

ALL DIMENSIONS IN INCHES

NOTES

PRIOR TO ALLOWING TRAFFIC ON ANY PORTION OF THE ROADWAY THAT HAS BEEN COLD MILLED, THE CONTRACTOR SHALL HAVE ERECTED "ROUGH GROOVED SURFACE" SIGNS THAT CONFORM TO THE ABOVE DETAILS. A MINIMUM OF ONE SIGN AT EACH END OF THE IMPROVEMENT WILL BE REQUIRED. THE CONTRACTOR SHALL MAINTAIN THE "ROUGH GROOVED SURFACE" SIGNS UNTIL THE COLD MILLED SURFACE IS COVERED WITH LEVELING BINDER OR SURFACE COURSE.

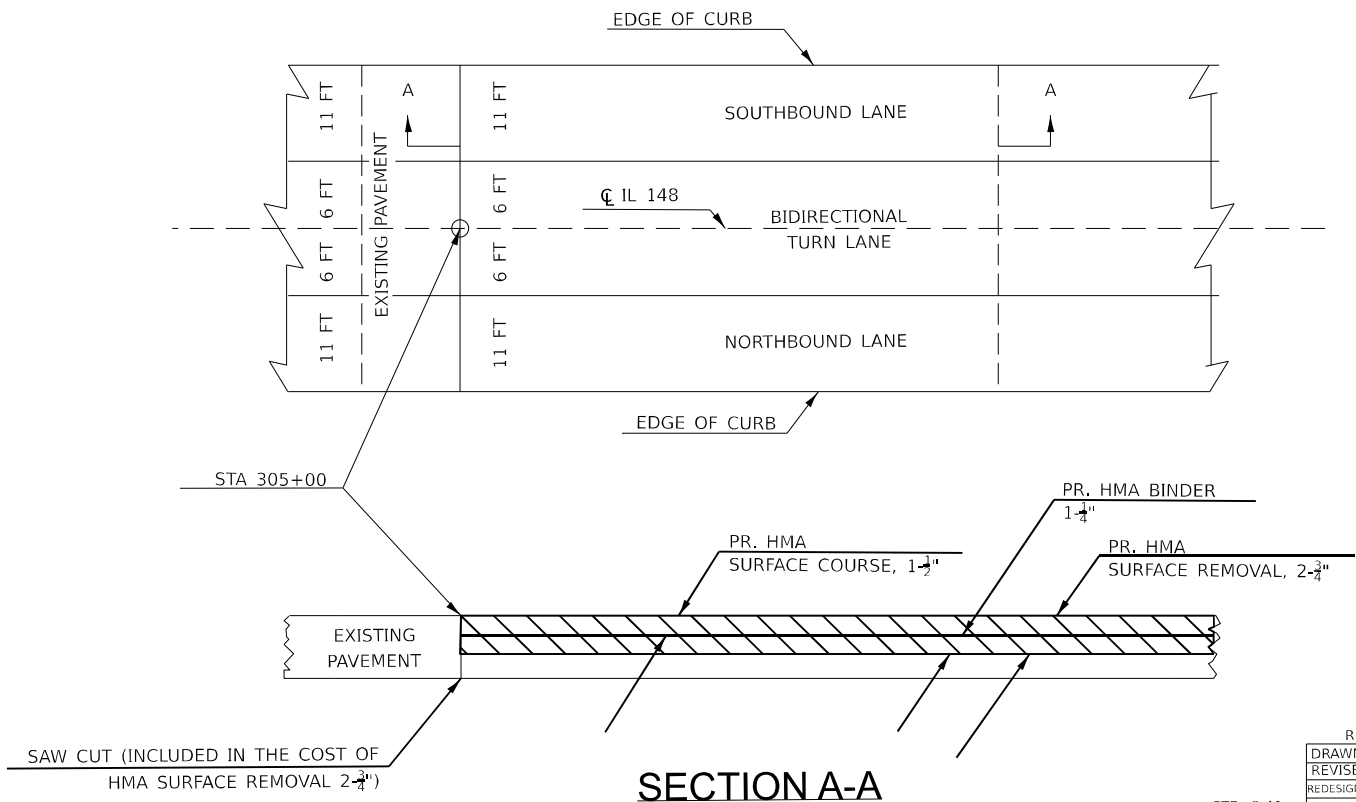
IF AT ANY TIME THE SIGNS ARE IN PLACE BUT NOT APPLICABLE, THEY SHALL BE TURNED FROM THE VIEW OF MOTORISTS OR COVERED AS DIRECTED BY THE ENGINEER.

THE COST OF FURNISHING, ERECTING, MAINTAINING, AND REMOVING THE REQUIRED SIGNS SHALL BE INCLUDED IN THE CONTRACT.

DRAWN	02-15-89
REVISED	03-27-08
REVISED	10-21-21
REVISED	05-27-22

STD. 9-23

INLAY DETAIL

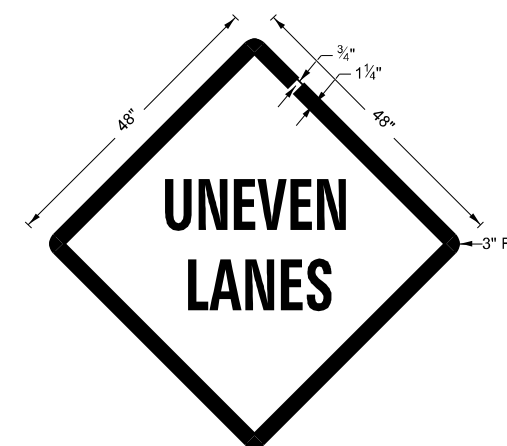


SECTION A-A

REVISIONS	
DRAWN	11-25-22
REVISED	
REDESIGNED	
RESIZED	

STD. 9-41

UNEVEN LANES SIGN W8-11 (48" X 48")



COLORS:

LEGEND AND BORDER - BLACK NON-REFLECTORIZED
BACKGROUND - ORANGE REFLECTORIZED

NOTE: PRIOR TO ALLOWING TRAFFIC ON ANY PORTION OF THE ROADWAY THAT HAS BEEN COLD MILLED OR BEFORE RESURFACING OPERATIONS BEGIN, THE CONTRACTOR SHALL HAVE ERECTED "UNEVEN PAVEMENT" SIGNS THAT CONFORM TO THE ABOVE DETAILS. A MINIMUM OF ONE SIGN AT EACH END OF THE IMPROVEMENT WILL BE REQUIRED. THE CONTRACTOR SHALL MAINTAIN THE "UNEVEN PAVEMENT" SIGNS UNTIL THE RESURFACING OPERATIONS ARE COMPLETED.

IF AT ANY TIME THE SIGNS ARE IN PLACE BUT NOT APPLICABLE, THEY SHALL BE TURNED FROM THE VIEW OF MOTORISTS OR COVERED AS DIRECTED BY THE ENGINEER.

THE COST OF FURNISHING, ERECTING, MAINTAINING, AND REMOVING THE REQUIRED SIGNS SHALL BE INCLUDED IN THE CONTRACT.

DRAWN	02-15-89
REVISED	05-08-08
REVISED	10-21-21
REVISED	05-27-22

STD. 9-24

STATE OF ILLINOIS
DEPARTMENT OF TRANSPORTATION

INLAY DETAIL
ROUGH GROOVED SURFACE & UNEVEN LANE SIGNAGE

SCALE: SHEET OF SHEETS STA. TO STA.

F.A.P. RTE.	SECTION	COUNTY	TOTAL SHEETS	SHEET NO.
726	(129X-2,130)RS-6	WILLAMSON	36	35

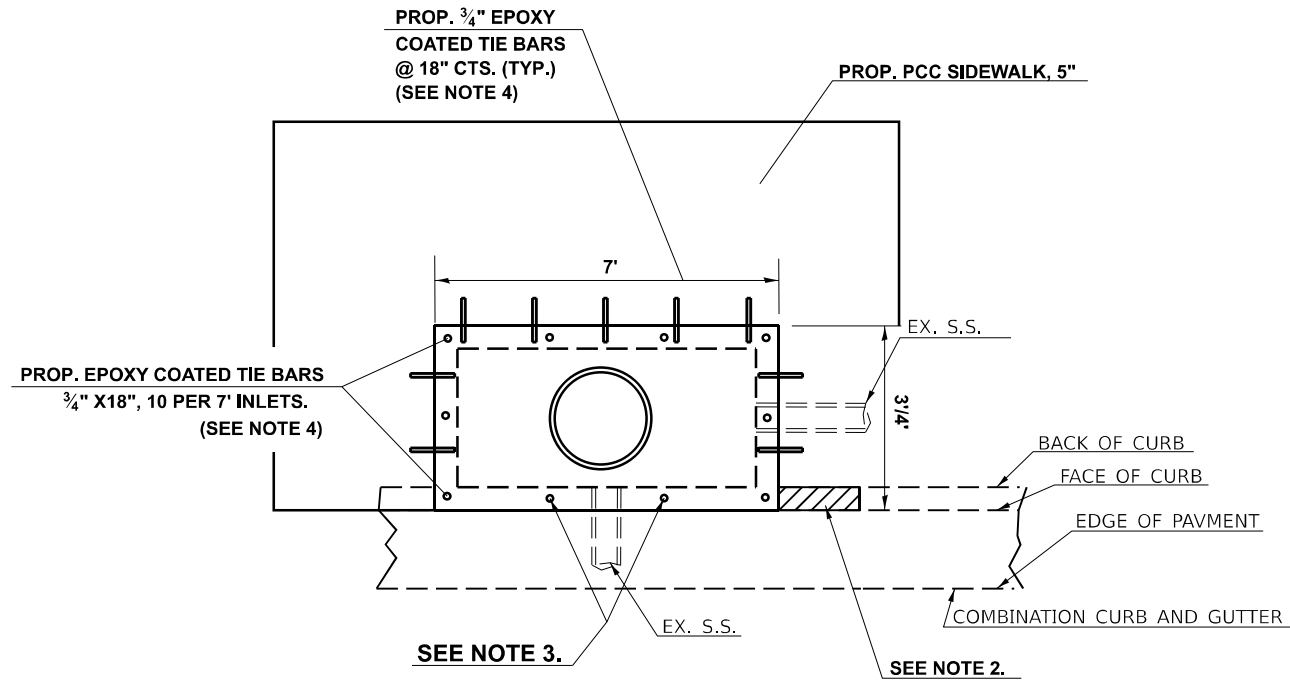
CONTRACT NO. 78978

ILLINOIS FED. AID PROJECT

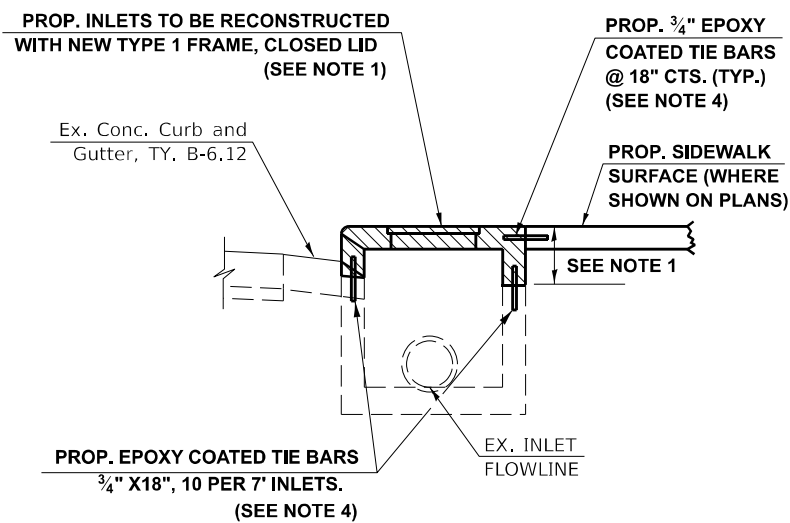
USER NAME = robert.handy	DESIGNED -	REVISED -
PLOT SCALE = 0.16666633 / in.	DRAWN -	REVISED -
PLOT DATE = 5/14/2024	CHECKED -	REVISED -
	DATE -	REVISED -

MODEL: Standards (Sheet)
 FILE NAME: P:\MIDOT\Documents\DOT Office\Drawings\BORD Project\78978\CAD\Drawings\78978-35-21-21.dwg

**DETAIL OF INLETS TO BE
RECONSTRUCTED WITH NEW TYPE 1
FRAME, CLOSED LID**



**PROP. RECONSTRUCTED
INLET DETAIL**



**PROP. RECONSTRUCTED INLET
SIDE VIEW DETAIL**

NOTES

NOTE 1. 15" FROM THE TOP OF THE INLET DOWN SHALL BE REMOVED AS SHOWN ON THE PLANS AND AS DIRECTED BY THE ENGINEER.

NOTE 2. LIMITS OF CURB AND GUTTER REMOVAL AND NEW COMB. CONC. CURB AND GUTTER NEAR INLETS TO BE DETERMINED BY THE ENGINEER UNLESS OTHERWISE NOTED IN PLANS. SHALL BE INCLUDED IN COST OF INLETS TO BE RECONSTRUCTED WITH NEW TYPE 1 FRAME, CLOSED LID.

NOTE 3. PROP. TIE BAR LOCATIONS TO BE ADJUSTED DEPENDING ON INLET OPENING.

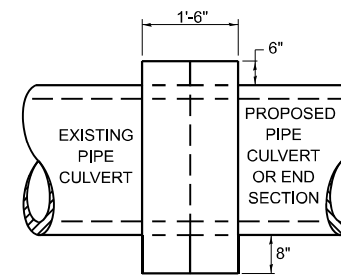
NOTE 4. PROP. 3/4" EPOXY COATED TIE BARS SHALL BE INCLUDED IN THE COST OF INLETS TO BE RECONSTRUCTED WITH NEW TYPE 1 FRAME, CLOSED LID. PROVIDE 1 1/2" CLEARANCE TYP. ALL REINFORCEMENT

LEGEND

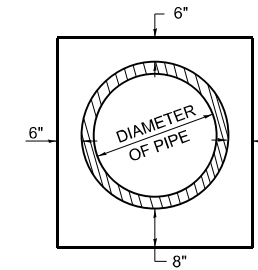


EX. INLET AND CONC. CURB & GUTTER TO BE REMOVED. (INCLUDED IN COST OF PROP. INLETS TO BE RECONSTRUCTED WITH NEW TYPE 1 FRAME, CLOSED LID)

**CONCRETE COLLAR
PIPE TO PIPE**



SIDE VIEW



END VIEW

TABULATION

DIAMETER OF PIPE	CL SI CONC CU YDS EST
12"	0.24
15"	0.29
18"	0.32
24"	0.44
30"	0.56
36"	0.66
42"	0.80
48"	0.93
54"	1.07
60"	1.22
72"	1.55

THE CONCRETE COLLAR SHALL BE PAID FOR AT THE CONTRACT UNIT PRICE PER CUBIC YARD FOR CONCRETE COLLAR, AS SHOWN ON THE PLANS, WHICH PRICE SHALL INCLUDE THE REMOVAL OF SUCH PORTIONS THE EXISTING HEADWALLS AS MAY BE REQUIRED.

CLASS SI CONCRETE SHALL BE USED THROUGHOUT.

DRAWN	07-13-90
REVISED	03-26-08
REVISED	10-21-21
REVISED	05-03-22

STD. 9-02

**STATE OF ILLINOIS
DEPARTMENT OF TRANSPORTATION**

**CONCRETE COLLAR DETAIL, SIDEWALK TIE BAR DETAIL, &
DETAIL OF INLETS TO BE RECONSTRUCTED**

SCALE: SCALE SHEET 0 OF 1 SHEETS STA. TO STA.

F.A.P. RTE.	SECTION	COUNTY	TOTAL SHEETS	SHEET NO.
726	(129X-2.130)RS-6	WILLIAMSON	36	36
CONTRACT NO. 78978				
ILLINOIS FED. AID PROJECT				

MODEL: Concrete Collar Tie Bar (Sheet)
FILE NAME: P:\GIS\Projects\2024\12\12\DOT\Documents\DOT\Office\Direct\BORG\Project\78978\CAD\Drawings\DOT\8978\Sheet\Typical.dwg

USER NAME = robert.handy	DESIGNED -	REVISED -
PLOT SCALE = 0.16666633' / in.	DRAWN -	REVISED -
PLOT DATE = 5/14/2024	CHECKED -	REVISED -
	DATE -	REVISED -