

SECTION 15, TOWNSHIP 33, RANGE 1E
 SECTION 7, TOWNSHIP 33, RANGE 2E
 SECTION 8, TOWNSHIP 33, RANGE 2E

08-02-2024 LETTING ITEM 049

STATE OF ILLINOIS
 DEPARTMENT OF TRANSPORTATION

FAU ROUTES	SECTION	COUNTY	TOTAL SHEETS	SHEET NO.
6123 & 6125	23-00085-00-RS	LASALLE	7	1
ILLINOIS CONTRACT NO.			87865	

INDEX OF SHEETS

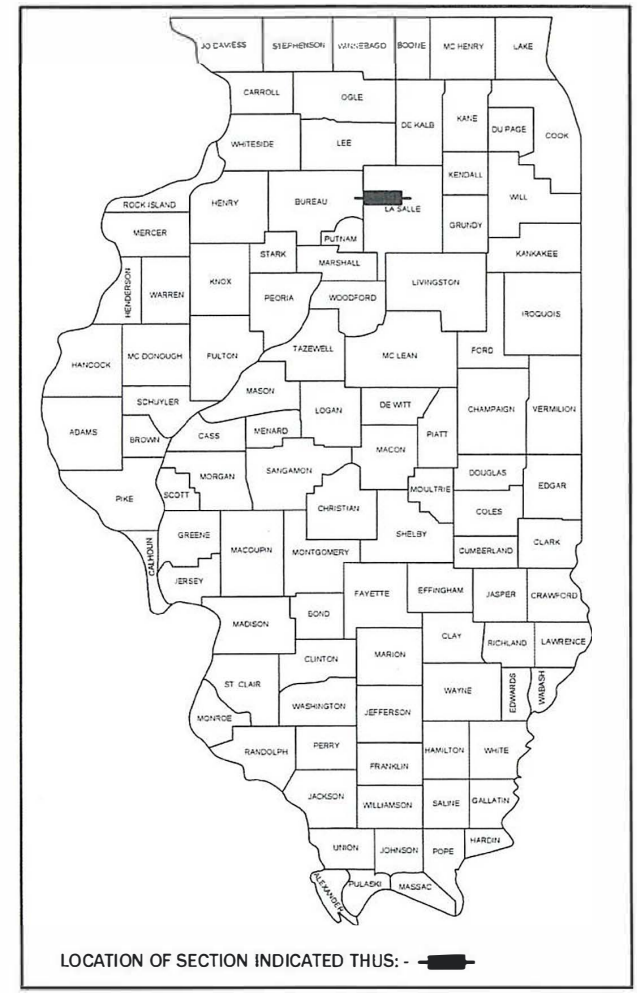
1. COVER SHEET
2. GENERAL NOTES & SUMMARY OF QUANTITIES
3. TYPICAL SECTIONS
4. - 7. PLAN SHEETS

HIGHWAY STANDARDS

000001-08	STANDARD SYMBOLS, ABBREVIATIONS AND PATTERNS
280001-07	TEMPORARY EROSION CONTROL SYSTEMS
424001-11	PERPENDICULAR CURB RAMPS FOR SIDEWALKS
424006-05	DIAGONAL CURB RAMPS FOR SIDEWALKS
424011-04	CORNER PARALLEL CURB RAMPS FOR SIDEWALKS
424021-06	DEPRESSED CORNER FOR SIDEWALKS
424026-03	ENTRANCE/ALLEY PEDESTRIAN CROSSINGS
606001-08	CONCRETE CURB TYPE B AND COMBINATION CONCRETE CURB AND GUTTER
701001-02	OFF-ROAD OPERATIONS, 2L, 2W, MORE THAN 15' AWAY
701006-05	OFF-ROAD OPERATIONS, 2L, 2W, 15' TO 24" FROM PAVEMENT EDGE
701301-04	LANE CLOSURE, 2L, 2W, SHORT TIME OPERATIONS
701311-03	LANE CLOSURE 2L, 2W MOVING OPERATIONS - DAY ONLY
701501-06	URBAN LANE CLOSURE, 2L, 2W, UNDIVIDED
701801-06	SIDEWALK, CORNER OR CROSSWALK CLOSURE
701901-09	TRAFFIC CONTROL DEVICES
780001-05	TYPICAL PAVEMENT MARKINGS
781001-04	TYPICAL APPLICATIONS RAISED REFLECTIVE PAVEMENT MARKERS

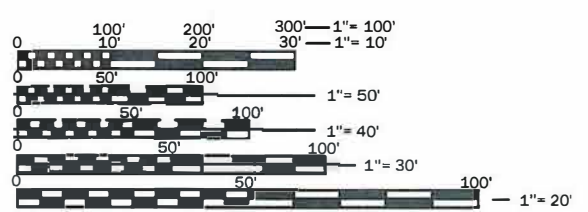
PROPOSED PLANS FOR
 FEDERAL AID HIGHWAY
 SURFACE TRANSPORTATION URBAN

CITY OF LA SALLE
 FAU 6123 (RICHARD HALLETT ROAD) &
 MS 2550A (8TH STREET)
 SECTION 23-00085-00-RS
 PROJECT UUGO(188)
 LASALLE COUNTY
 C-93-019-25



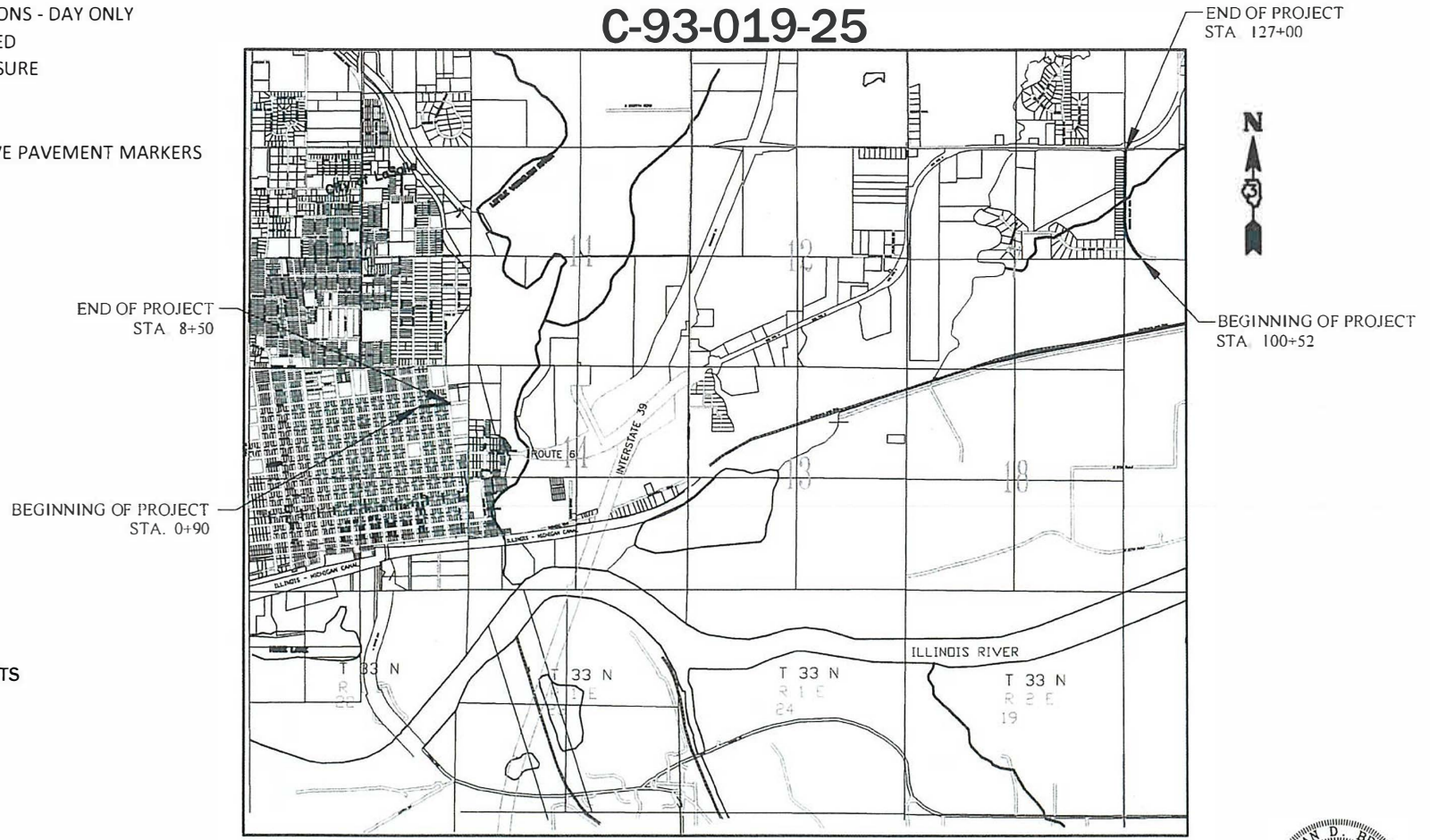
FAU 6123 (RICHARD HALLETT ROAD)
 FUNCTIONAL CLASSIFICATION: MAJOR COLLECTOR
 ADT = 1950 (2022)
 POSTED SPEED = 30 MPH

FAU 6125 (8TH STREET)
 FUNCTIONAL CLASSIFICATION: MINOR COLLECTOR
 ADT = 525 (2022)
 POSTED SPEED = 30 MPH



FULL SIZE PLANS HAVE BEEN PREPARED USING STANDARD ENGINEERING SCALES. REDUCED SIZED PLANS WILL NOT CONFORM TO STANDARD SCALES. IN MAKING MEASUREMENTS ON REDUCED PLANS, THE ABOVE SCALES MAY BE USED.

J.U.L.I.E.
 JOINT UTILITY LOCATION INFORMATION FOR EXCAVATION
 1-800-892-0123
 OR 811



GROSS LENGTH = 3,408 FT. = 0.645 MILES
 NET LENGTH = 3,408 FT. = 0.645 MILES

PREPARED BY OR UNDER THE DIRECT SUPERVISION OF:

[Signature]
 DATED THIS 6TH DAY OF MAY, 2024



STATE OF ILLINOIS
 DEPARTMENT OF TRANSPORTATION

SUBMITTED May 6 20 24
Jeff Grove
 JEFF GROVE, MAYOR - CITY OF LA SALLE

PASSED May 30 20 24
[Signature]
 DISTRICT 3 LOCAL ROADS AND STREET ENGINEER

RELEASED FOR BID BASED ON LIMITED REVIEW May 30 20 24
Jenna Thompson
 REGION 2 ENGINEER

PRINTED BY THE AUTHORITY
 OF THE STATE OF ILLINOIS

DISTRICT 3 NO. (815) 434-6131
 CONTRACT NO. 87865

GENERAL NOTES

THE THICKNESS OF THE HOT-MIX ASPHALT SHOWN ON THE PLANS IS A NOMINAL THICKNESS. DEVIATIONS FROM NOMINAL THICKNESS WILL BE PERMITTED WHEN SUCH DEVIATIONS OCCUR DUE TO REGULARITIES IN THE EXISTING SURFACE OR BASE ON WHICH THE HOT-MIX ASPHALT IS PLACED.

THE ENGINEER WILL BE THE SOLE JUDGE CONCERNING CURING TIME FOR VARIOUS HOT-MIX ASPHALT LIFTS.

FOR STABILIZATION, ALL TYPE III BARRICADES WILL REQUIRE A MINIMUM OF FOUR (4) SAND BAGS PER BARRICADE.

CONTRACTOR SHALL NOTIFY J.U.L.I.E. AT LEAST 48 HOURS PRIOR TO EXCAVATION.

CONTRACTOR SHALL INSTALL "ROAD CONSTRUCTION AHEAD" SIGNS ON ALL CROSS ROADWAYS, PLACED EAST AND WEST ON US ROUTE 6 AT RICHARD HALLETT ROAD. SIGNS TO BE 48" X 48" WITH A BLACK DIRECTIONAL ARROW ON FLUORESCENT ORANGE BACKGROUND.

THE FOLLOWING RATES OF APPLICATION HAVE BEEN USED IN CALCULATING PLAN QUANTITIES:

BITUMINOUS MATERIAL (TACK COAT)	
SURFACE TYPE	RESIDUAL RATE
AGGREGATE BASES	N/A
CONCRETE, EXISTING HMA, AND MILLED HMA PAVEMENT	0.05 LBS/SQ FT
NEW HMA AND BRICK	0.025 LBS/SQ FT

ESTIMATED TRUCK APPLICATION RATE USED FOR CALCULATING PLAN QUANTITIES

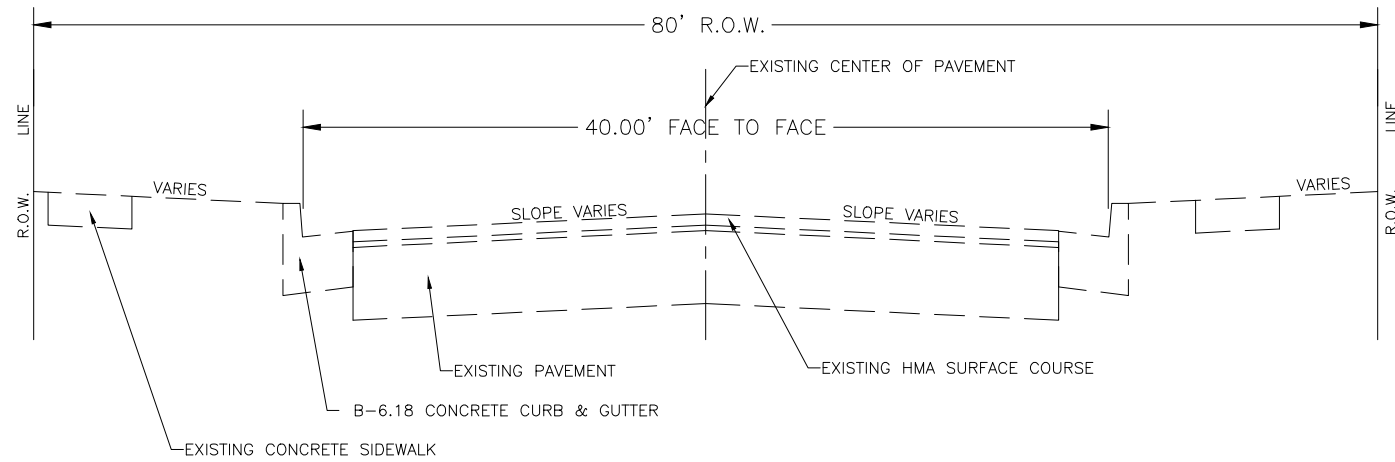
PAVING SCHEDULE

LOCATION	RESURFACING SCHEDULE							
	LENGTH	WIDTH	AREA	HMA SURFACE REMOVAL, 2.25"	BIT. MATL. (TACK COAT)	HMA BINDER COURSE, IL-9.5FG, N50	HMA SURFACE COURSE, IL-9.5FG, MIX C, N50	LONGITUDINAL JOINT SEALANT
	FT	FT	SY	SY	POUNDS	TONS	TONS	FOOT
8TH STREET (FAU 6125)								
0+90.00 - 4+00.00	310	40	1378	1378	931	97	97	620
4+00.00 - 4+60.00	60	VARIES	483	483	327	34	34	351
4+60.00 - 7+75.00	315	40	1400	1400	945	98	98	630
7+75.00 - 8+50.00	75	VARIES	654	654	442	46	46	401
TOTAL (8TH STREET)				3915	2645	275	275	2002
RICHARD HALLETT ROAD (FAU 6123)								
100+52.00 - 106+00.00	548	VARIES	2337	2337	1578	230	197	1107
106+00.00 - 116+00.00	1000	32	3556	3556	2401	349	299	1000
116+00.00 - 124+73.85	873.85	32	3108	3108	2098	305	262	874
124+73.85 - 127+00.00	226.15	VARIES	1144	1144	773	113	97	579
TOTAL (RICHARD HALLETT ROAD)				10145	6850	997	855	3560
PROJECT TOTAL				14060	9495	1272	1130	5562

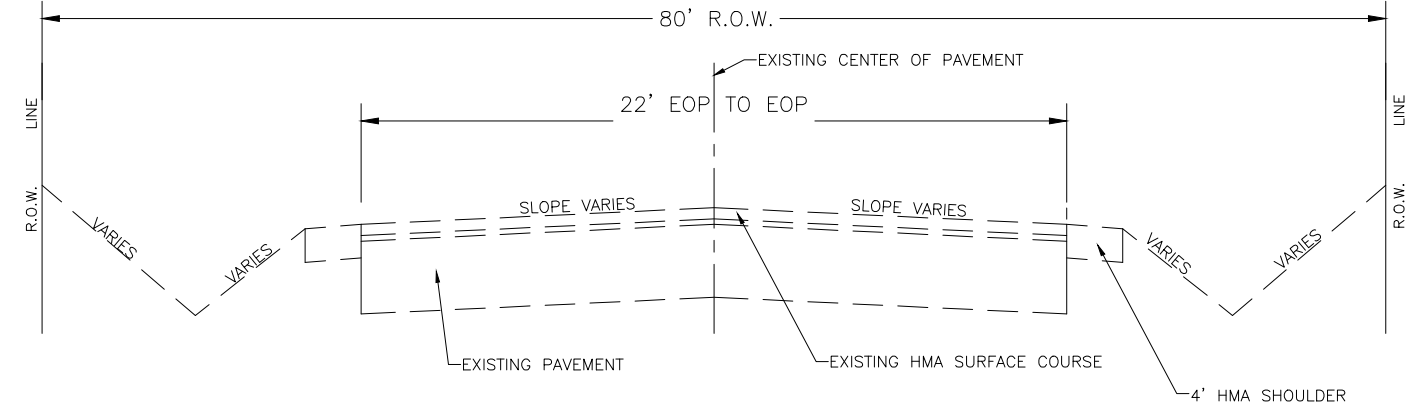
CONSTRUCTION TYPE CODE 005 SUMMARY OF QUANTITIES

ITEM CODE	ITEM DESCRIPTION	8TH STREET		RICHARD HALLETT ROAD		TOTAL PROJECT	
		QUANTITY	UNIT	QUANTITY	UNIT	QUANTITY	UNIT
40200800	AGGREGATE SURFACE COURSE, TYPE B	0	TON	20	TON	20	TON
40600290	BITUMINOUS MATERIALS (TACK COAT)	2645	LBS	6850	LBS	9495	LBS
40600370	LONGITUDINAL JOINT SEALANT	2002	FOOT	3560	FOOT	5562	FOOT
40602965	HOT-MIX ASPHALT BINDER COURSE, IL 9.5FG, N50	275	TON	997	TON	1272	TON
40604000	HOT-MIX ASPHALT SURFACE COURSE, IL 9.5FG, MIX "C", N50	275	TON	855	TON	1130	TON
42300300	PORTLAND CEMENT CONCRETE DRIVEWAY PAVEMENT, 7"	56	SY	0	SY	56	SY
42400200	PORTLAND CEMENT CONCRETE SIDEWALK, 5"	2772	SF	0	SF	2772	SF
42400800	DETECTABLE WARNINGS	160	SF	0	SF	160	SF
44000158	HOT-MIX ASPHALT SURFACE REMOVAL, 2-1/4"	3915	SY	10145	SY	14060	SY
44000200	DRIVEWAY PAVEMENT REMOVAL	56	SY	0	SY	56	SY
44000500	COMBINATION CURB AND GUTTER REMOVAL	440	FT	0	FT	440	FT
44000600	SIDEWALK REMOVAL	3545	SF	0	SF	3545	SF
48101200	AGGREGATE SHOULDERS, TYPE B	0	TON	40	TON	40	TON
60255500	MANHOLES TO BE ADJUSTED	1	EACH	0	EACH	1	EACH
60260100	INLETS TO BE ADJUSTED	2	EACH	0	EACH	2	EACH
60266600	VALVE BOXES TO BE ADJUSTED	3	EACH	0	EACH	3	EACH
60604400	COMBINATION CONCRETE CURB AND GUTTER, TY B-6.18	440	FT	0	FT	440	FT
67100100	MOBILIZATION	0.5	L.S.	0.5	L.S.	1	L.S.
70102620	TRAFFIC CONTROL AND PROTECTION 701501	0.5	L.S.	0.5	L.S.	1	L.S.
70102640	TRAFFIC CONTROL AND PROTECTION 701801	0.5	L.S.	0.5	L.S.	1	L.S.
* 78000100	THERMOPLASTIC PAVEMENT MARKING - LETTERS AND SYMBOLS	0	SF	90	SF	90	SF
* 78000200	THERMOPLASTIC PAVEMENT MARKING - LINE 4"	640	FT	7816	FT	8456	FT
* 78000400	THERMOPLASTIC PAVEMENT MARKING - LINE 6"	597	FT	0	FT	597	FT
* 78000500	THERMOPLASTIC PAVEMENT MARKING - LINE 8"	0	FT	290	FT	290	FT
* 78000650	THERMOPLASTIC PAVEMENT MARKING - LINE 24"	66	FT	24	FT	90	FT
* 78100100	RAISED REFLECTIVE PAVEMENT MARKER	0	EACH	55	EACH	55	EACH

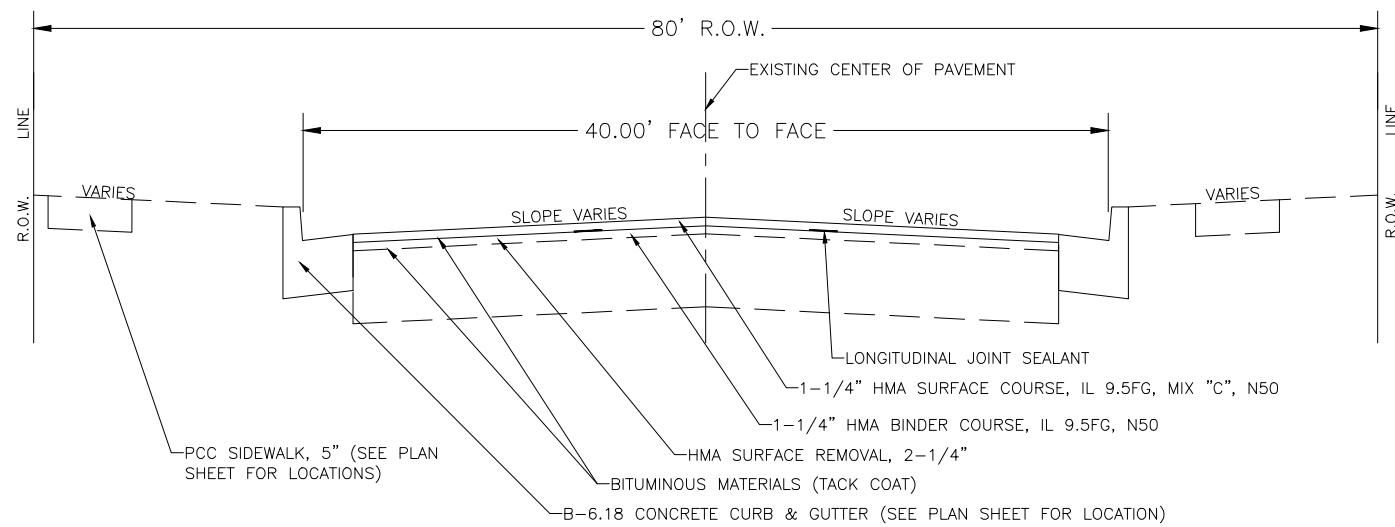
* SPECIALTY ITEMS



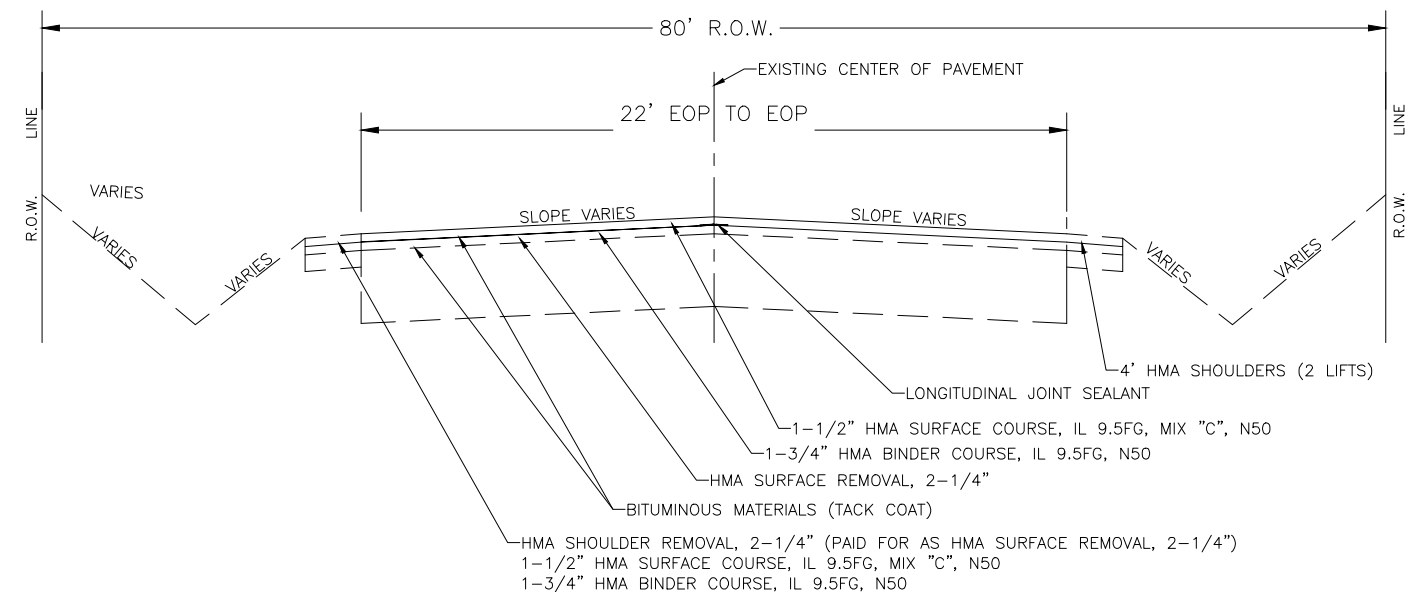
EXISTING TYPICAL SECTION
8th STREET
N.T.S.



EXISTING TYPICAL SECTION
RICHARD HALLETT ROAD
N.T.S.



PROPOSED TYPICAL SECTION
8th STREET
N.T.S.



PROPOSED TYPICAL SECTION
RICHARD HALLETT ROAD
N.T.S.

HOT-MIX ASPHALT REQUIREMENT TABLES

LOCATION(S):	ENTIRE PROJECT	ENTIRE PROJECT
MIXTURE USE(S):	HMA BINDER	HMA SURFACE
BINDER GRADE (PG):	PG 64-22	PG 64-22
DESIGN AIR VOIDS:	4.0% @ N50	4.0% @ N50
MIXTURE COMPOSITION (MIXTURE GRADATION):	IL 9.5FG	IL 9.5FG
FRICTION AGGREGATE:		MIXTURE C
MIXTURE WEIGHT:	112.0 LB/IN/SY	112.0 LB/IN/SY
QUALITY MANAGEMENT PROGRAM:	QCQA	QCQA
SUBLOT SIZE:	N/A	N/A
DENSITY TESTING METHOD:	NUCLEAR	NUCLEAR
MATERIAL TRANSFER DEVICE (REQUIRED)	NO	NO

87865 - RICHARD HALLETT ROAD & 8TH STREET IN LA SALLE

DRAWN BY: BDB/JS	CAD:	REVISIONS
CHECKED BY: BRIAN BROWN	DATE:	DATE BY



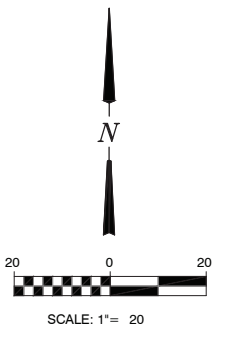
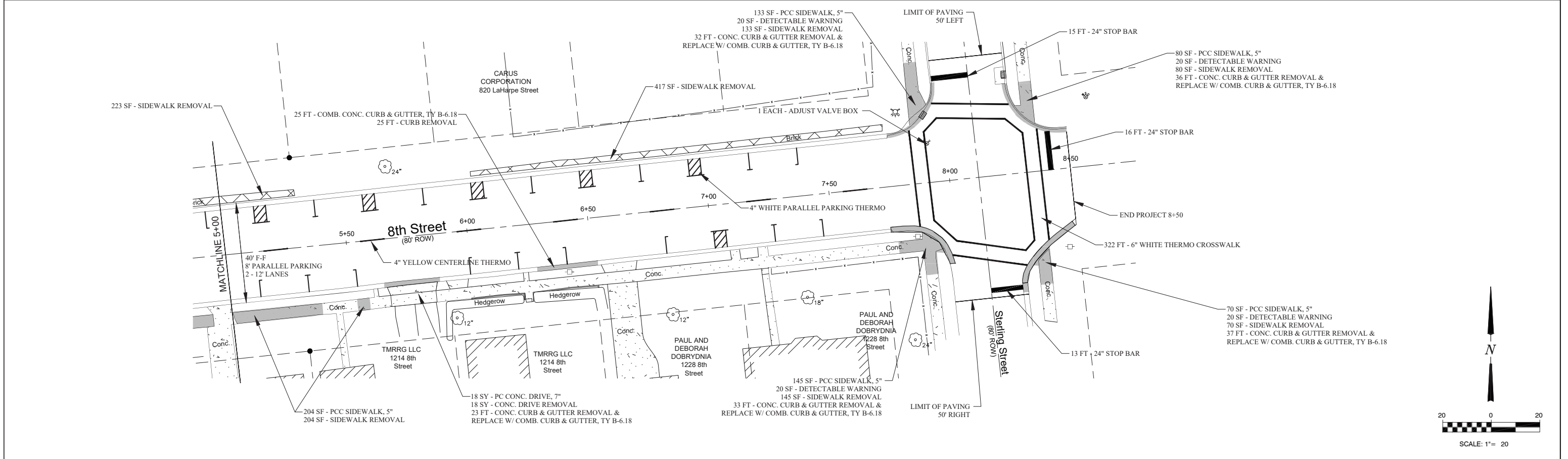
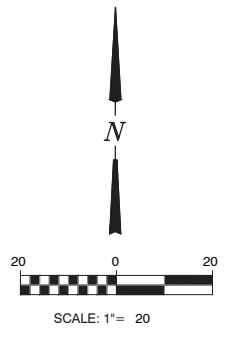
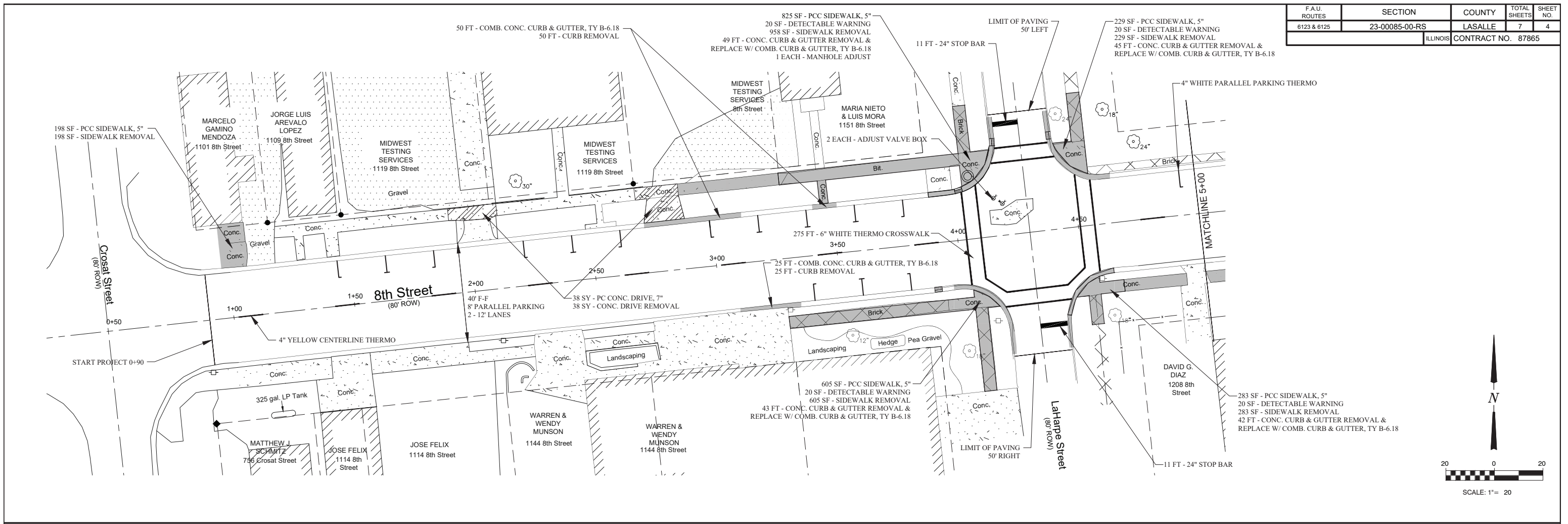
THE CITY OF
LaSalle
ILLINOIS


FAU 6123 (RICHARD HALLETT ROAD) & FAU 6125 (8th STREET)
SECTION 23-00085-00-RS
CITY OF LA SALLE, LA SALLE COUNTY

TYPICAL SECTIONS

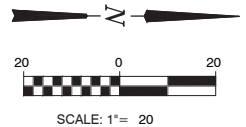
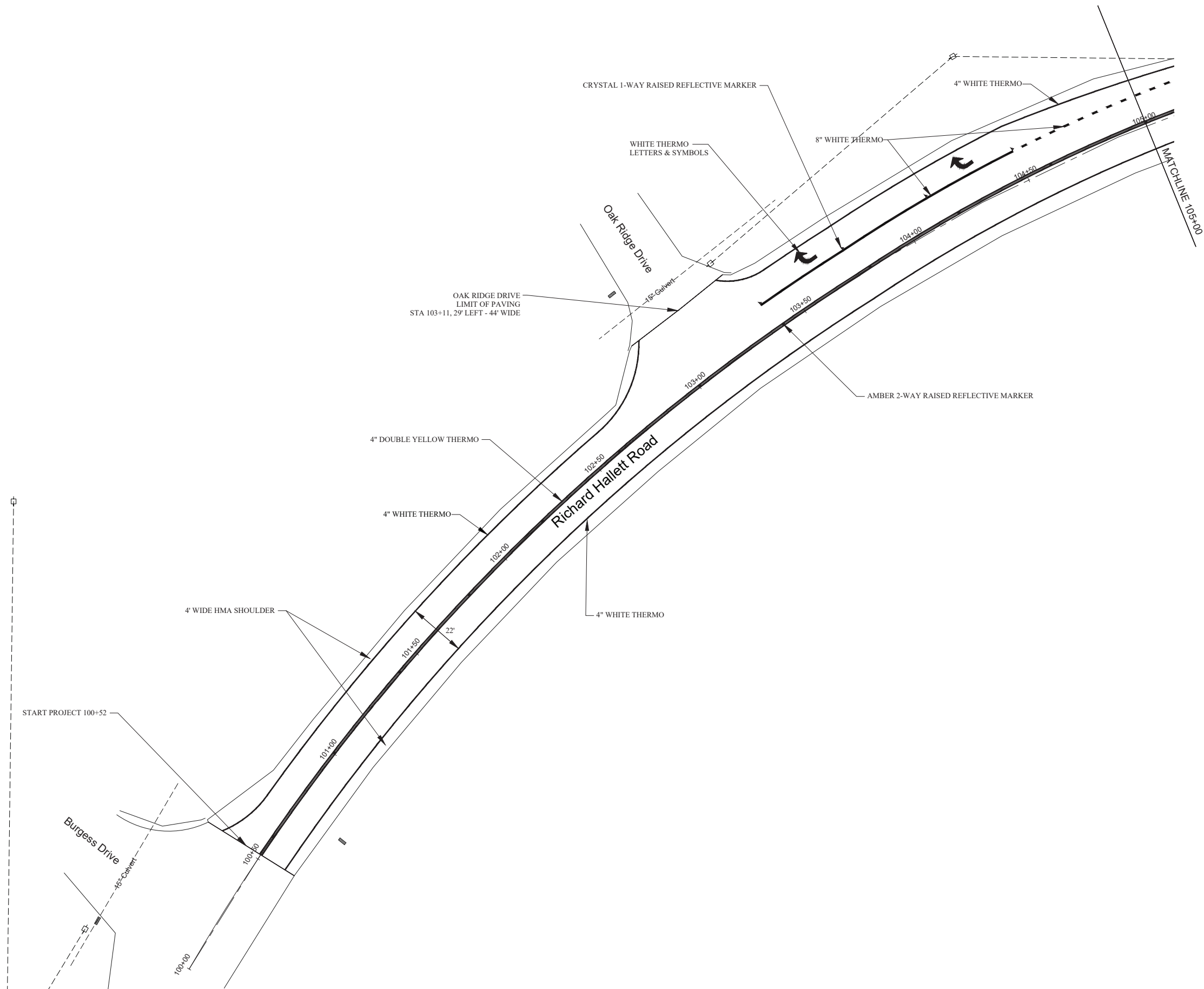
SCALE: N/A	SHEET 3
FILE NO.:	OF 7

FAU ROUTES	SECTION	COUNTY	TOTAL SHEETS	SHEET NO.
6123 & 6125	23-00085-00-RS	LASALLE	7	4
		ILLINOIS	CONTRACT NO. 87865	



DRAWN BY:	CAD:	REVISIONS		 THE CITY OF <i>LaSalle</i> ILLINOIS	FAU 6123 (RICHARD HALLETT ROAD) & FAU 6125 (8th STREET) SECTION 23-00085-00-RS CITY OF LA SALLE, LA SALLE COUNTY	PLAN / PLAN 8th Street from Crosat Street to Sterling Street STA. 0+50 TO STA. 8+50	SCALE:	SHEET 4
		DATE:	DATE				BY	FILE NO.:

FAU ROUTES	SECTION	COUNTY	TOTAL SHEETS	SHEET NO.
6123 & 6125	23-00085-00-RS	LASALLE	7	5
		ILLINOIS	CONTRACT NO. 87865	



DRAWN BY:
CHECKED BY:

REVISIONS	
DATE	BY

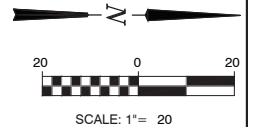
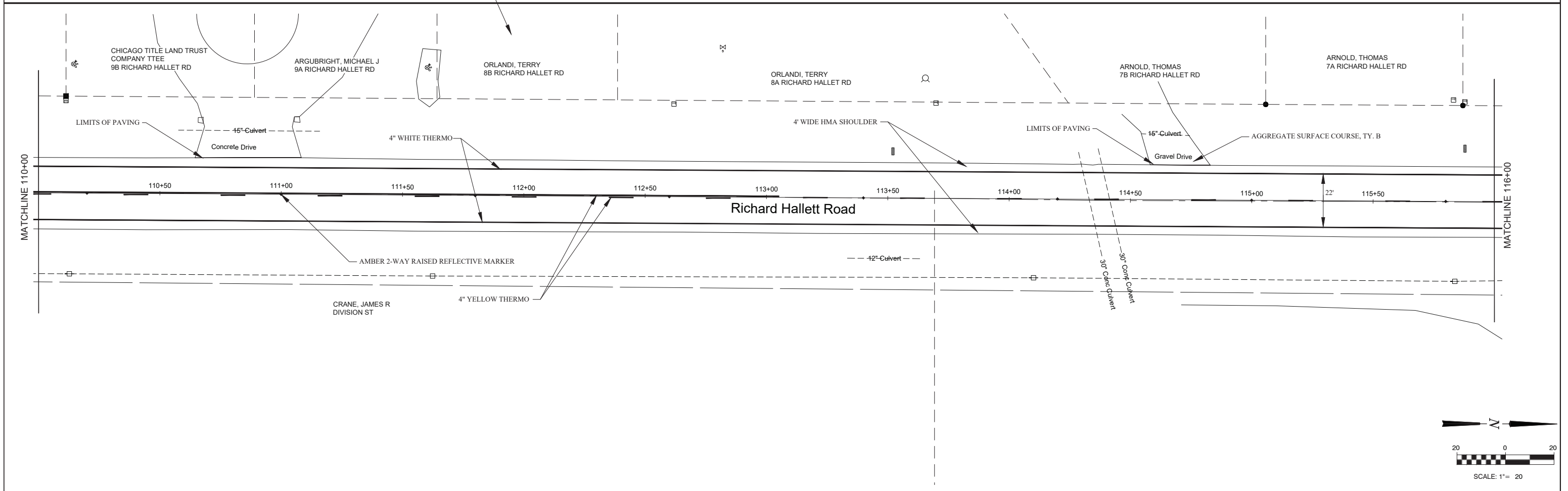
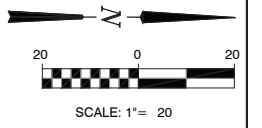
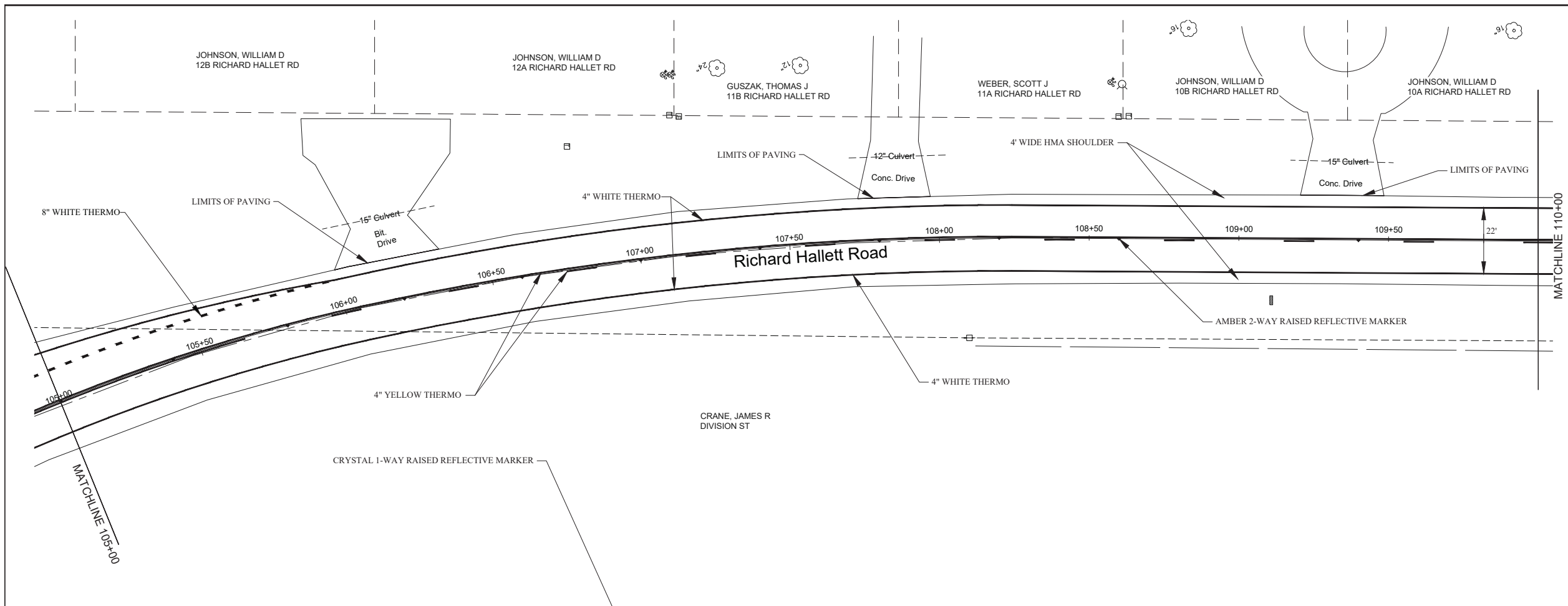



FAU 6123 (RICHARD HALLETT ROAD) & FAU 6125 (8th STREET)
SECTION 23-00085-00-RS
CITY OF LA SALLE, LA SALLE COUNTY

PLAN
Richard Hallett Road
STA. 100+52 TO STA. 105+00

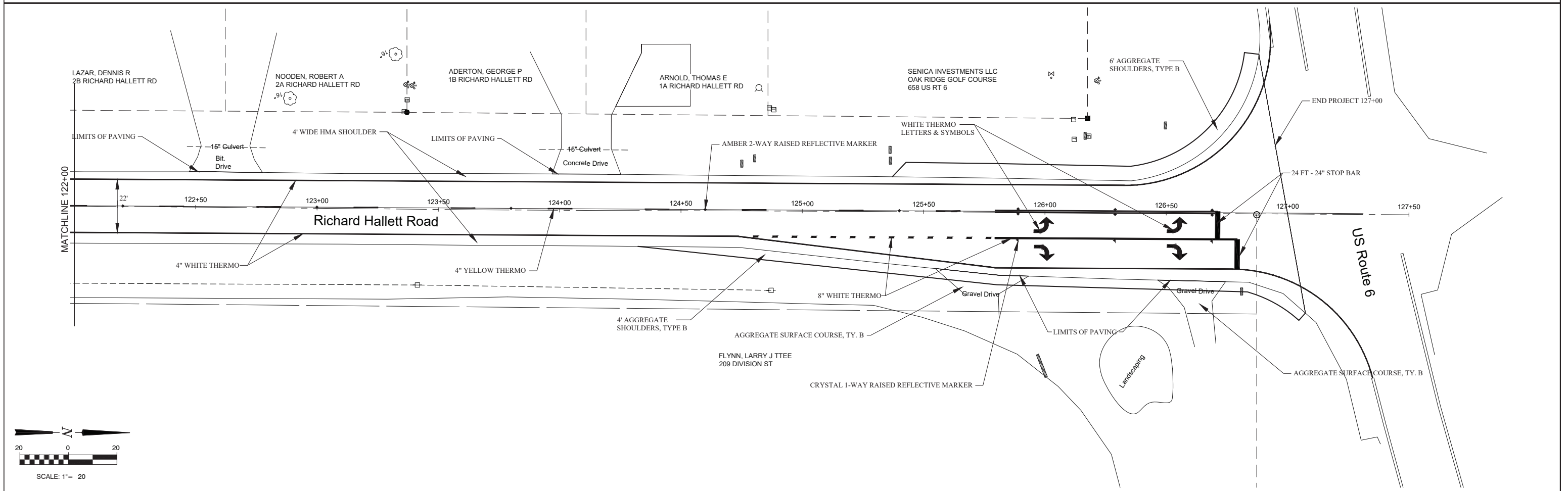
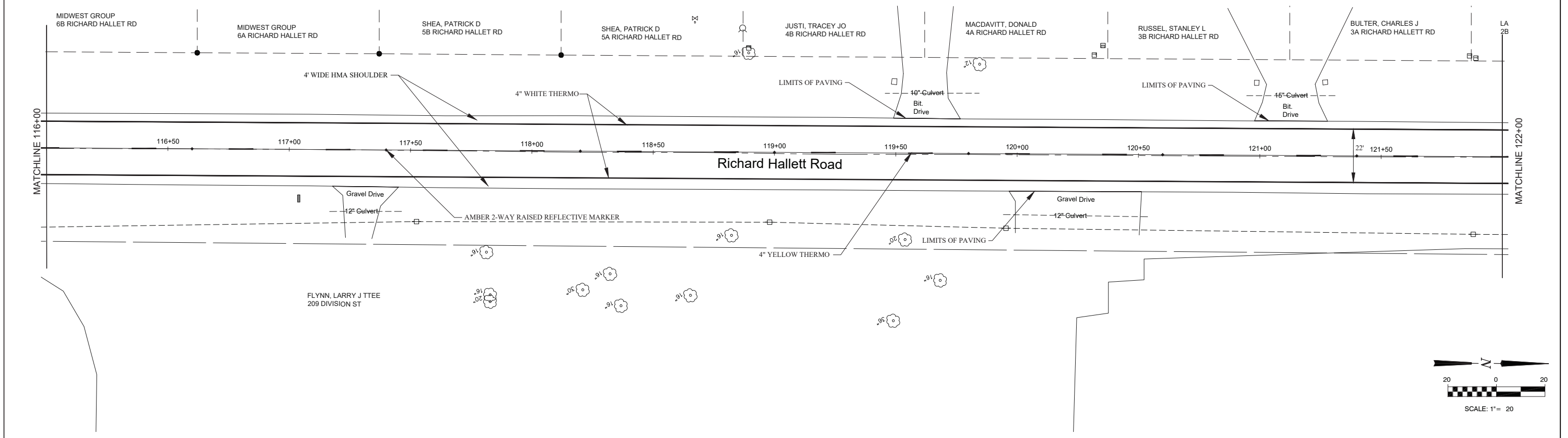
SCALE: 1" = 20'	SHEET 5
FILE NO.:	OF 7


FAU ROUTES	SECTION	COUNTY	TOTAL SHEETS	SHEET NO.
6123 & 6125	23-00085-00-RS	LASALLE	7	6
		ILLINOIS	CONTRACT NO. 87865	



DRAWN BY:	CAD:	REVISIONS		 THE CITY OF <i>LaSalle</i> ILLINOIS	FAU 6123 (RICHARD HALLETT ROAD) & FAU 6125 (8th STREET) SECTION 23-00085-00-RS CITY OF LA SALLE, LA SALLE COUNTY	PLAN / PLAN Richard Hallett Road STA. 105+00 TO STA. 116+00	SCALE: 1" = 20'	SHEET 6
		DATE	BY				FILE NO.:	OF 7
CHECKED BY:	DATE:							

FAU ROUTES	SECTION	COUNTY	TOTAL SHEETS	SHEET NO.
6123 & 6125	23-00085-00-RS	LASALLE	7	7
ILLINOIS CONTRACT NO. 87865				



DRAWN BY:	CAD:	REVISIONS		 THE CITY OF <i>LaSalle</i> ILLINOIS	FAU 6123 (RICHARD HALLETT ROAD) & FAU 6125 (8th STREET) SECTION 23-00085-00-RS CITY OF LA SALLE, LA SALLE COUNTY	PLAN / PLAN Richard Hallett Road STA. 116+00 TO STA. 127+00	SCALE: 1" = 20'	SHEET 7
		DATE	BY				FILE NO.:	OF 7
CHECKED BY:	DATE:							