

08-02-2024 LETTING ITEM 054

SAFE ROUTES TO SCHOOL

SECTION 22-00012-00-SW

JOB NO. C-97-029-23

PROJECT NO. 39J0(175)

VILLAGE OF DIETERICH
EFFINGHAM COUNTY, ILLINOIS

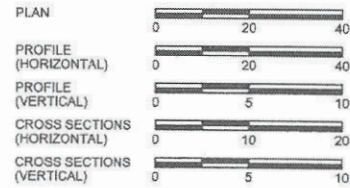
T7N, R7E, 3RD P.M.

PROJECT LENGTH 4,966 FEET (0.94 MILES)

FOR INDEX OF SHEETS
SEE SHEET 2

LOCATION MAP
VILLAGE OF DIETERICH

- PROJECT AREA
- EXISTING ADA SIDEWALK
- PROPOSED 2026 SIDEWALK IMPROVEMENTS



DESIGN STAGE J.U.L.I.E. DIG NUMBER

DIG # X222493030

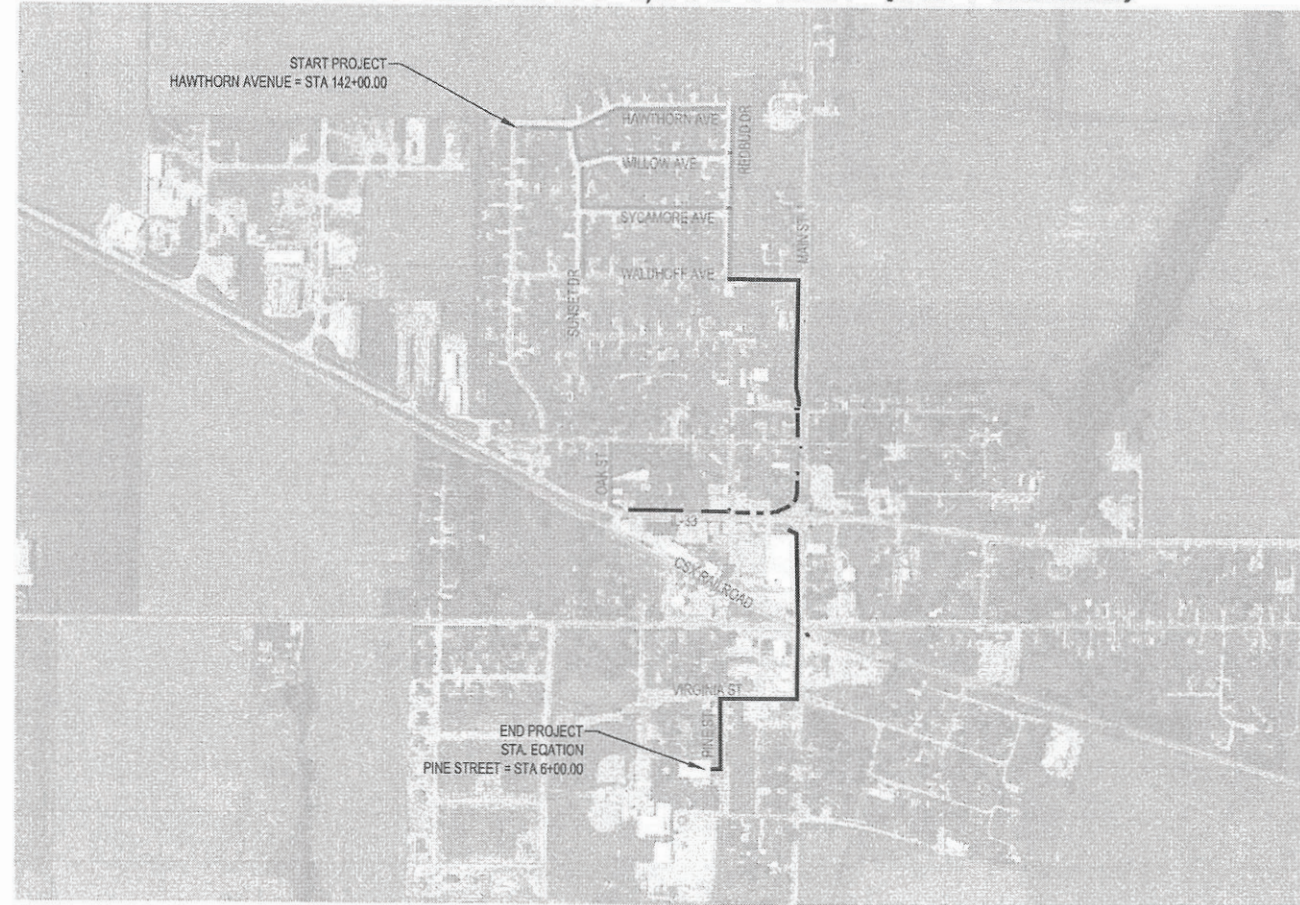
J.U.L.I.E.

JOINT UTILITY LOCATION INFORMATION FOR EXCAVATION
1-800-892-0123

UTILITY NOTE

THE LOCATIONS OF THOSE BURIED AND ABOVEGROUND UTILITIES SHOWN ARE APPROXIMATE, ARE SHOWN FOR CONTRACTOR INFORMATIONAL USE ONLY, AND ARE NOT TO BE REFERENCED FOR CONSTRUCTION PURPOSES. THE IMPLIED PRESENCE OR ABSENCE OF UTILITIES IS NOT TO BE CONSTRUED BY THE OWNER, ENGINEER, CONTRACTOR, OR SUBCONTRACTORS TO BE AN ACCURATE AND COMPLETE REPRESENTATION OF UTILITIES THAT MAY OR MAY NOT EXIST ON THE CONSTRUCTION SITE. BURIED AND ABOVEGROUND UTILITY LOCATION, IDENTIFICATION, AND MARKING ARE THE SOLE RESPONSIBILITY OF THE CONTRACTOR. REROLTING, DISCONNECTION, PROTECTION, ETC. OF ANY UTILITIES MUST BE COORDINATED BETWEEN THE CONTRACTOR, UTILITY COMPANY, AND OWNER. SITE SAFETY, INCLUDING THE AVOIDANCE OF HAZARDS ASSOCIATED WITH BURIED AND ABOVEGROUND UTILITIES, REMAIN THE SOLE RESPONSIBILITY OF THE CONTRACTOR. CONTRACTOR MUST CONTACT J.U.L.I.E. 48 HOURS PRIOR TO THE BEGINNING OF CONSTRUCTION.

Contract No. 95943



APPROVED: **05/22/24**
MAYOR, VILLAGE OF DIETERICH

PASSED: **05/20/24**
DISTRICT SEVEN ENGINEER OF LOCAL ROADS & STREETS

Releasing For Bid Based on Limited Review: **05/22/24**
REGISTERED PROFESSIONAL ENGINEER
STATE OF ILLINOIS
DEPARTMENT OF TRANSPORTATION

Pine Street FUNCTIONAL CLASSIFICATION - Local Road/Street ADT (2018 Highest data) - 300 vpd	Oak Street FUNCTIONAL CLASSIFICATION - Local Road/Street ADT (2018 Highest data) - N/A vpd	Willow Avenue FUNCTIONAL CLASSIFICATION - Local Road/Street ADT (2018 Highest data) - N/A vpd
Virginia Street FUNCTIONAL CLASSIFICATION - Local Road/Street ADT (2018 Highest data) - 700 vpd	Waldhoff Avenue FUNCTIONAL CLASSIFICATION - Local Road/Street ADT (2018 Highest data) - 325 vpd	Hawthorn Avenue FUNCTIONAL CLASSIFICATION - Local Road/Street ADT (2018 Highest data) - N/A vpd
Main Street FUNCTIONAL CLASSIFICATION - Minor Arterial ADT (2018 Highest data) - 3000 vpd	Redbud Drive FUNCTIONAL CLASSIFICATION - Local Road/Street ADT (2018 Highest data) - N/A vpd	Sunset Drive FUNCTIONAL CLASSIFICATION - Local Road/Street ADT (2018 Highest data) - N/A vpd
Center Street FUNCTIONAL CLASSIFICATION - Minor Arterial ADT (2021 Highest data) - 6500 vpd	Sycamore Avenue FUNCTIONAL CLASSIFICATION - Local Road/Street ADT (2018 Highest data) - N/A vpd	

LENGTH OF PROJECT

MAIN STREET = 278 FEET (0.05 MILES)
CENTER STREET = 140 FEET (0.02 MILES)
OAK STREET = 396 FEET (0.06 MILES)
REDBUD DRIVE = 877 FEET (0.16 MILES)
SYCAMORE AVENUE = 748 FEET (0.14 MILES)
WILLOW AVENUE = 784 FEET (0.14 MILES)
HAWTHORN AVENUE = 810 FEET (0.15 MILES)
SUNSET DRIVE = 734 FEET (0.13 MILES)
POINTE DRIVE = 251 FEET (0.04 MILES)
TOTAL = 4966.00 FEET (0.94 MILES)

FINAL
05/22/2024

Lee R. Beckman
My License Expires 11-30-25

DATE PRESENTED	BY	COUNTY	SECTION	ROUTE NO.	FILED AND PROJECT
		EFFINGHAM	22-00012-00-SW		
FIELD BOOK	DRAWN BY	CHECKED BY	FILE LOCATION	SAVE DATE	
	BAF, MAH	MJH, LRB	S:\22\22-00012-00-SW\TITLE.DWG	5/22/2024 11:22	
MILANO & GRUNLOH ENGINEERS, LLC 114 W. WASHINGTON AVE. PO BOX 897 EFFINGHAM, IL 62401 Phone: (217) 347-7262 (800) 677-2714 Email: mgeengineers@mgeengineers.com Web: www.mgeengineers.com Design Firm #184-003108	TITLE SHEET	SHEET #	JOB #	CONTRACT #	
	SAFE ROUTES TO SCHOOL	1	21204bg5	95943	

INDEX OF SHEETS

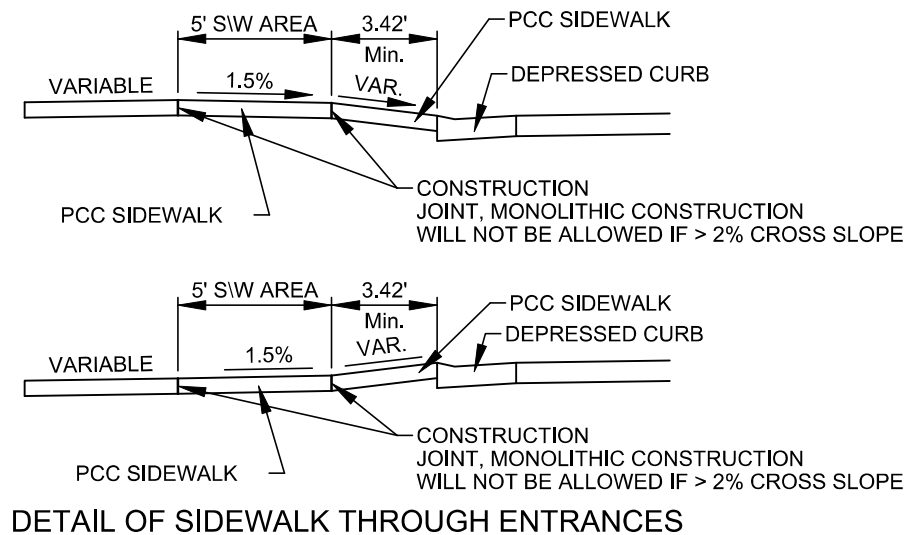
1	TITLE SHEET
2	INDEX OF SHEETS AND STANDARDS & GENERAL NOTES SHEET & DETAILS
3	SUMMARY OF QUANTITIES
4	SCHEDULE OF QUANTITIES
5-6	TYPICAL SECTIONS
7	BENCHMARK AND ALIGNMENT SHEET
8-15	SIDEWALK PLAN SHEETS

COMMITMENTS

- Trees three inches or greater at breast height shall not be cleared from April 1 Through September 30 of any given year.

LEGEND

●	IRON PIN SET	□	ELECTRIC TRANSFORMER
○	IRON PIN FOUND	▣	ELECTRIC HANDHOLE
🌳	TREE (DECIDUOUS)	⚡	LIGHTPOLE
🔥	FIRE HYDRANT	✉	MAILBOX
⊕	WATER METER	⊠	STORM INLET
⊗	VALVE (GAS OR WATER)	⊙	STORM MANHOLE
⊠	GAS METER	□	FIBER BOX
OGAS	GAS MARKER	▣	FIBER HANDHOLE
⊠T	TELEPHONE PEDESTAL	⚡	TRAFFIC SIGNAL
○	POWER POLE	+	STREET SIGN
⊠E	GUY ANCHOR	⊙	WOOD POST
⊠EM	ELECTRIC PEDESTAL	⊙	SANITARY MANHOLE
⊠	ELECTRIC METER		
⊠	SIGN		
○B	BOLLARD		
—G—	GAS MAIN EXISTING		
—W—	WATER MAIN EXISTING		
—S—	SANITARY SEWER		
—SS—	STORM SEWER		
—T—	EXISTING TELE-COMMUNICATIONS LINE		
—FD—	EXISTING FIBER OPTIC LINE		
x 100.00	PROPOSED ELEVATION		
x 100.00	EXISTING ELEVATION		
x 100.00 (M.E.G.)	(MATCH EXISTING GRADE)		
□ IP	INLET PROTECTION		
□ PP	PIPE PROTECTION		
—SF—	SILT FENCE		
▨	RIP RAP		
▨	DETECTABLE WARNING		
▨	6" PCC PAVEMENT		
▨	6" PCC SIDEWALK		
▨	INCIDENTAL HMA		
▨	AGGREGATE SURFACE COURSE		
▨	SIDEWALK REMOVAL		



DETAIL OF SIDEWALK THROUGH ENTRANCES

STANDARDS

280001-07	Temporary Erosion Control Systems
424001-11	Perpendicular Curb Ramps for Sidewalks
424016-05	Mid-Block Curb Ramps for Sidewalks
424021-06	Depressed Corner for Sidewalks
424026-03	Entrance/Alley Pedestrian Crossings
701001-02	Off-Road Operations, 2L, 2W, More Than 15' (4.5 m) Away
701006-05	Off-Road Operations, 2L, 2W, 15' (4.5 m) to 24" (600 mm) from Pavement Edge
701011-04	Off-Road Moving Operations, 2L, 2W, Day Only
701301-04	Lane Closure, 2L, 2W, Short Time Operations
701501-06	Urban Lane Closure, 2L, 2W, Undivided
701801-06	Sidewalk, Corner or Crosswalk Closure
701901-09	Traffic Control Devices
720001-01	Sign Panel Mounting Details
720006-04	Sign Panel Erection Details
720011-01	Metal Posts for Signs, Markers & Delineators
728001-01	Telescoping Steel Sign Support
BLR 21-9	Typical Application of Traffic Control Devices for Construction on Rural Local Highways
BLR 22-7	Typ. Appl. of T.C.D. for Rural Loc. Hwys. (2-Lane 2 Way Rural Traff.) (Rd. Closed to Thru Traff.)

GENERAL NOTES

- Pavement grades shown are at the top of pavement surfaces, unless otherwise noted in the plans.
- All elevations refer to U.S.G.S. mean sea level datum. - NAVD 88
- Any reference to a standard in the plans shall be interpreted to mean the edition as indicated by the sub-number listed on Sheet 2.
- Before ordering storm sewers, pipe culverts or pipe drains, the Contractor shall consult the Engineer for exact lengths.
- CURB AND GUTTER, WALKS, SLABS, AND PCC DRIVEWAY PAVEMENT
 - Concrete curb and gutter shall be in accordance with IDOT Std. Spec. Locate contraction joints at 20 ft on center, unless otherwise shown. Locate expansion joints at minimum 100 ft. on center, unless otherwise shown.
 - Concrete walks shall be in accordance with IDOT Std. Spec. Unless otherwise shown, locate sidewalk contraction joints at 5 ft on center and expansions joints at 50 ft on center, unless otherwise shown, locate contraction joints in larger slabs at 15 ft intervals in each direction.
 - Concrete walks crossing through entrances shall be constructed in accordance with the detail shown on sheet 3. Monolithically constructed sidewalks will not be allowed if greater than 2% cross slope.
- The following rates of application or units were used for calculating plan quantities:
 - Bituminous Materials (Tack Coat) - 0.05 LB/SQ FT
 - Aggregate Surface Course (type B), Rock Fill, Aggregate Temporary Access - 2.05 Tons/Cu Yd
 - Hot Mix Asphalt Surface Course, Mix "C", N70 - 2.02 Tons/Cu Yd
 - Rip Rap - 110 lbs/ Cu Ft

REVISION	DATE	BY	COUNTY	SECTION	ROUTE NO.	FIELD BOOK
			EFFINGHAM	22-0012-00-SW		
			BLK#	FED. ROAD DIST. NO. 7		
				FILE # PROJECT		
				FILE LOCATION		
				SAVE DATE		
MILANO & GRUNLOH ENGINEERS, LLC 114 W. WASHINGTON AVE. PO BOX 887 EFFINGHAM, IL 62401 Phone: (717) 347-7762 (800) 677-2714 Email: mgenr@mgengr.com Web: www.mgenr.com Design Firm # 184-003108						
INDEX SHEET SAFE ROUTES TO SCHOOL 22-0012-00-SW DIETZICH, ILLINOIS						
SHEET #						
2 OF 15						
JOB #						
21204bg5						

SUMMARY OF QUANTITIES			
ITEM No.	ITEM	UNIT	QUANTITY
20100110	TREE REMOVAL (6 TO 15 UNITS DIAMETER)	UNIT	10
20200100	EARTH EXCAVATION	CU YD	50
42400100	PORTLAND CEMENT CONCRETE SIDEWALK 4 INCH	SQ FT	23,517
42400300	PORTLAND CEMENT CONCRETE SIDEWALK 6 INCH	SQ FT	738
42400800	DETECTABLE WARNINGS	SQ FT	245
44000200	DRIVEWAY PAVEMENT REMOVAL	SQ YD	41
44000600	SIDEWALK REMOVAL	SQ FT	1,576
56109210	WATER VALVES TO BE ADJUSTED	EACH	4
56500300	DOMESTIC METER VAULTS TO BE ADJUSTED	EACH	3
60300305	FRAMES AND LIDS TO BE ADJUSTED	EACH	5
* 66900200	NON-SPECIAL WASTE DISPOSAL	CU YD	1
* 66900530	SOIL DISPOSAL ANALYSIS	EACH	1
* 66901001	REGULATED SUBSTANCES PRE-CONSTRUCTION PLAN REPORT	LSUM	1
* 66901003	REGULATED SUBSTANCES FINAL CONSTRUCTION	LSUM	1
* 66901006	REGULATED SUBSTANCES MONITORING	CAL DA	1
67100100	MOBILIZATION	LSUM	1
X2500900	SEEDING, CLASS 1 (SPECIAL)	ACRE	0.75
* X2600012	REMOVE AND RELOCATE SIGN PANEL AND POLE ASSEMBLY	EACH	1
X7010216	TRAFFIC CONTROL AND PROTECTION, (SPECIAL)	LSUM	1

* SPECIALTY ITEMS

MILANO & GRUNLOH ENGINEERS, LLC 114 W. WASHINGTON AVE. PO BOX 897 EFFINGHAM, IL 62401 Phone: (217) 347-7262 (800) 677-2714 Email: mgenr@mgengineers.com Web: www.mgengineers.com Design Firm # 184-003108		FIELD BOOK DRAWN BY: BAF, MJH CHECKED BY: MJH, LRB FILE LOCATION: S:\2022\2204BG5\BIDDING SAVE DATE: 5/22/2024 13:38	ROUTE NO. SECTION: 22-0012-00-SW FED. ROAD DIST. NO. 7 FED. AID PROJECT:	COUNTY: EFFINGHAM ILLINOIS CONTRACT 95943	BY: _____ DATE: _____ REVISION ISSUED: _____
SUMMARY OF QUANTITIES SAFE ROUTES TO SCHOOL 22-0012-00-SW DIETERICH, ILLINOIS		SHEET # 3 OF 15	JOB # 21204bg5		

PAVEMENT SCHEDULE						
STREET	STATION (START)	STATION (FINISH)	O/S	PORTLAND CEMENT CONCRETE SIDEWALK 4 INCH	PORTLAND CEMENT CONCRETE SIDEWALK 6 INCH	DETECTABLE WARNINGS
				42400100	42400300	42400800
				SQ FT	SQ FT	SQ FT
NORTH POINTE DR	142+24.39	142+67.59	18.31 RT to 34.67 RT	240		
	142+67.59	142+90.00	18.33 RT to 23.33 RT		110	
	142+90.00	144+79.08	18.33 RT to 23.33 RT	945		
	144+69.70	144+77.87	18.50 RT to 23.50 RT			12
HAWTHORNE AVE	145+14.41	145+20.08	25.10 RT to 20.10 RT			11
	145+14.41	146+21.82	18.45 RT to 25.10 RT	605		
	146+45.54	148+37.96	19.50 RT to 24.50 RT	960		
	148+65.87	149+56.77	19.50 RT to 24.50 RT	450		
	149+77.78	150+77.29	19.50 RT to 24.50 RT	500		
	151+01.43	153+37.58	19.50 RT to 24.50 RT	1180		
WILLOW AVE	153+28.07	153+37.58	19.50 RT to 24.50 RT			12
	50+43.75	51+71.94	19.50 LT to 24.50 LT	640		
	51+71.94	51+91.40	19.50 LT to 24.50 LT		100	
	51+91.40	52+74.51	19.50 LT to 24.50 LT	415		
	52+74.51	53+02.33	19.50 LT to 24.50 LT		140	
	53+02.33	54+29.45	19.50 LT to 24.50 LT	635		
	54+52.49	55+17.60	19.50 LT to 24.50 LT	325		
SYCAMORE AVE	55+39.61	57+97.20	19.50 LT to 39.50 LT	1320		
	57+94.37	57+97.20	34.50 LT to 39.50 LT			10
	60+33.81	64+51.80	19.50 LT to 24.50 LT	2090		
	64+69.75	65+21.17	19.50 LT to 24.50 LT	260		
	65+45.12	67+75.43	19.50 LT to 39.50 LT	1185		
SUNSET DR	67+72.57	67+75.43	34.50 LT to 39.50 LT			20
	36+00.00	36+06.95	19.50 RT to 24.50 RT			11
	36+02.07	39+03.04	19.50 RT to 34.00 RT	1535		
	38+98.98	39+03.04	29.00 RT to 34.00 RT			11
	39+33.81	39+38.00	28.50 RT to 33.50 RT			10
	39+33.81	39+95.44	19.50 RT to 33.50 RT	325		
	40+19.81	41+49.40	19.50 RT to 44.00 RT	720		
	41+47.52	41+49.40	39.00 RT to 44.00 RT			10
	41+73.57	41+75.40	39.00 RT to 44.00 RT			10
	41+73.57	43+75.73	19.50 RT to 44.00 RT	1030		
WALDOFF AVE	20+36.00	20+41.00	14.50 RT to 20.50 RT	30		10
	69+93.76	70+01.03	19.50 RT to 24.50 RT			11
	69+93.76	78+72.49	14.00 RT to 24.50 RT	4465		
	73+48.20	73+53.20	14.00 RT to 16.00 RT			10
REDBUD DR	76+37.37	76+42.37	14.00 RT to 16.00 RT			10
	78+67.30	78+72.30	14.00 RT to 16.00 RT			10
	371+91.18	371+97.09	25.75 RT to 30.75 RT	30		10
	372+16.57	372+95.70	25.41 RT to 30.41 RT	396		10
	372+95.70	373+09.07	25.52 RT to 30.52 RT		67	
MAIN ST	373+09.07	373+74.27	25.48 RT to 30.48 RT	326		
	373+74.27	373+84.71	25.46 RT to 30.46 RT		52	
	373+84.71	374+44.94	25.38 RT to 30.38 RT	301		
	374+44.94	374+81.76	25.03 RT to 30.03 RT		184	
	374+81.76	375+08.57	24.64 RT to 29.64 RT	134		10
FAYETTE ST	90+37.30	90+42.30	15.50 LT to 25.50 LT	50		
	90+37.30	90+42.30	15.50 LT to 17.50 LT			10
OAK ST	100+06.27	100+08.27	21.50 LT to 26.50 LT			10
	100+06.27	102+00.01	14.50 LT to 26.50 LT	985		
	102+00.01	102+18.17	14.50 LT to 19.50 LT		85	
	102+18.17	103+16.05	14.50 LT to 19.50 LT	510		

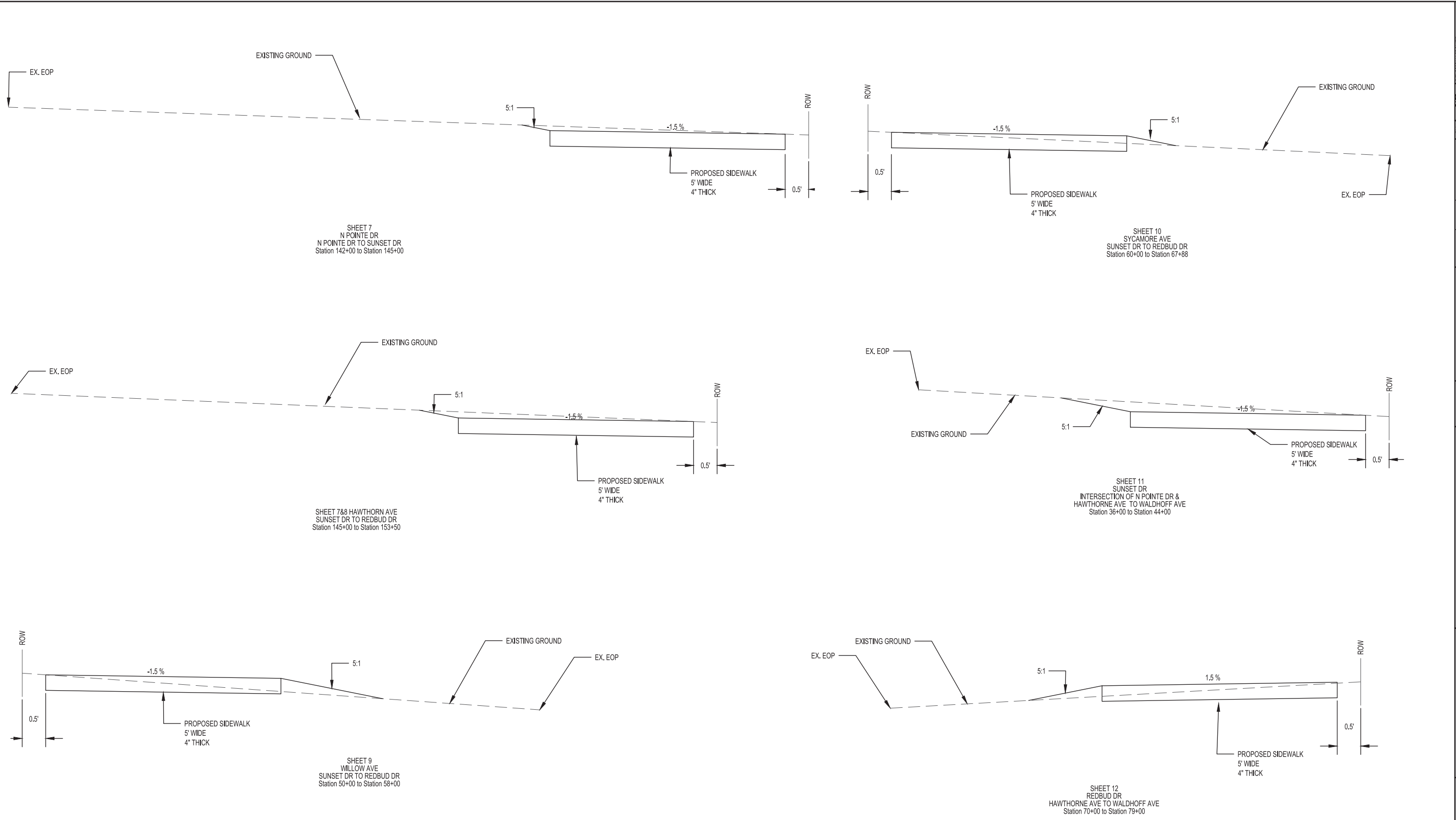
PAVEMENT SCHEDULE CONTINUED

IL-33	617+34.18	618+23.80	26.00 LT to 55.00 LT	480		
	621+23.99	622+03.73	28.75 LT to 23.25 LT	390		
	623+75.15	623+82.58	21.00 LT to 29.00 LT	30		
	623+75.15	623+82.58	21.00 LT to 29.00 LT			15
	624+15.19	624+20.43	24.00 LT to 30.00 LT			12
624+15.19	624+22.78	24.00 LT to 31.50 LT	30			
TOTALS				23517	738	245

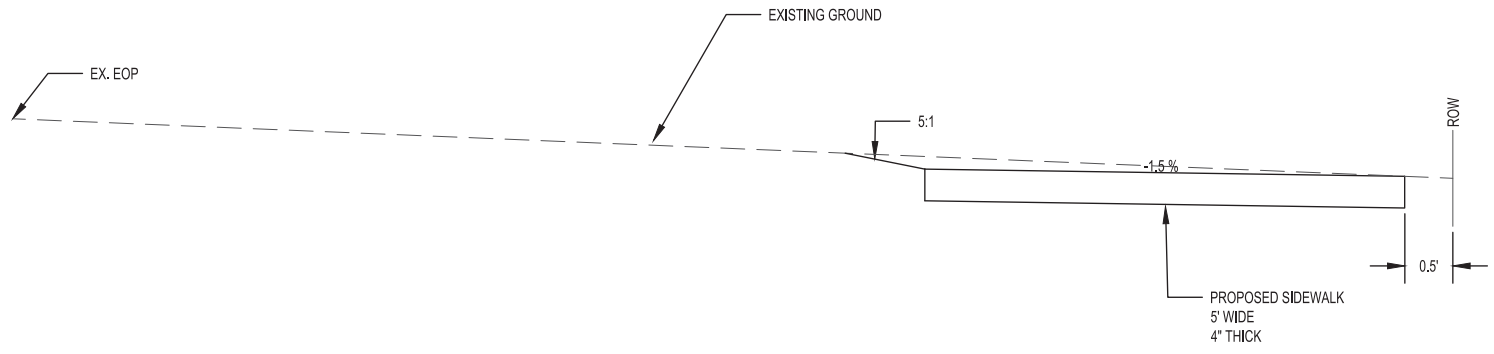
STATION	SEEDING, CLASS 1
	25000100
	ACRE
TOTAL	0.75

REMOVALS									
STREET	STATION	OFFSET	SIDEWALK REMOVAL	DRIVEWAY PAVEMENT REMOVAL	DOMESTIC METER VAULTS TO BE ADJUSTED	WATER VALVES TO BE ADJUSTED	FRAMES AND LIDS TO BE ADJUSTED	REMOVE AND RELOCATE SIGN PANEL AND POLE ASSEMBLY	TREE REMOVAL (6 TO 15 UNITS DIAMETER)
			44000600 SQ FT	44000200 SQ YD	56500300 EACH	56109210 EACH	60300305 EACH	X2600012 EACH	20100110 UNITS
NORTH POINTE DR	Sta. 142+67.67 to Sta. 142+89.99	18.32 RT to 23.32 RT		13					
HAWTHORNE AVE	Sta. 145+65.42	18.43 RT			1				
	Sta. 146+16.06	23.68 RT				1			
	Sta. 147+56.38	24.94 RT			1				
	Sta. 147+70.97	24.96 RT				1			
	Sta. 151+67.68 to Sta. 151+71.68	19.50 RT to 24.50 RT	20						
	Sta. 152+00.02	19.50 RT					1		
WILLOW AVE	Sta. 152+15.14	24.35 RT			1				
	Sta. 51+71.61 to Sta. 51+91.68	19.50 LT to 24.50 LT		12					
SYCAMORE AVE	Sta. 52+74.52 to Sta. 53+02.34	19.50 LT to 24.50 LT		16					
	Sta. 60+35.03	19.40 LT						1	
SUNSET DR	Sta. 39+63.04	19.00 RT					1		
	Sta. 40+50.28	19.00 RT					1		
REDBUD DR	Sta. 72+32.63	20.25 RT				1			
	Sta. 73+41.40	19.18 RT				1			
	Sta. 75+34.23	20.32 RT				1			
	Sta. 76+33.55	19.67 RT				1			
MAIN ST	Sta. 372+17.15 to Sta. 375+08.57	25.86 RT to 29.82 RT	1167						
OAK ST	101+69.03	19.04 LT							10
IL-33	Sta. 621+23.99 to Sta. 622+03.71	23.77 LT to 28.71 LT	389						
TOTAL			1576	41	3	4	5	1	10

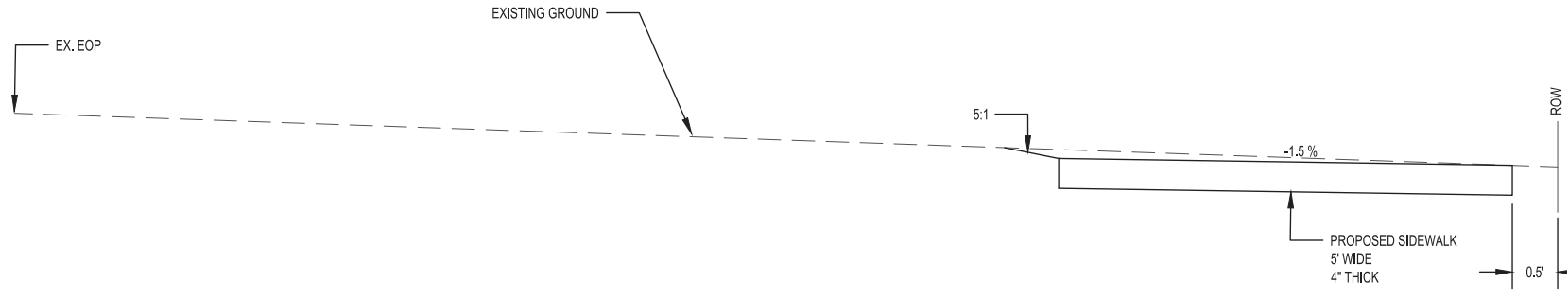
REVISIONS							
DATE	BY	COUNTY	SECTION	ROUTE NO.	FED. ROAD DIST. NO. 7	FED. AID PROJECT	CONTRACT
		EFFINGHAM	22-0002-00-SW				96943
FIELD BOOK	DRAWN BY	CHECKED BY	FILE LOCATION	SAVE DATE			
	BAF, MJH	MJH, LRB	S:\2022\220655\DWG\TITLE.DWG	5/22/2024 13:38			
MILANO & GRUNLOH ENGINEERS, LLC 114 W. WASHINGTON AVE. PO BOX 897 EFFINGHAM, IL 62401 Phone: (217) 347-7262 (800) 677-2714 Email: mgenr@mgengineers.com Web: www.mgenr.com Design Firm # 184-003108							
SCHEDULE OF QUANTITIES SAFE ROUTES TO SCHOOL 22-0002-00-SW DIETERICH, ILLINOIS							
SHEET #							
4 OF 15							
JOB #							
21204bg5							



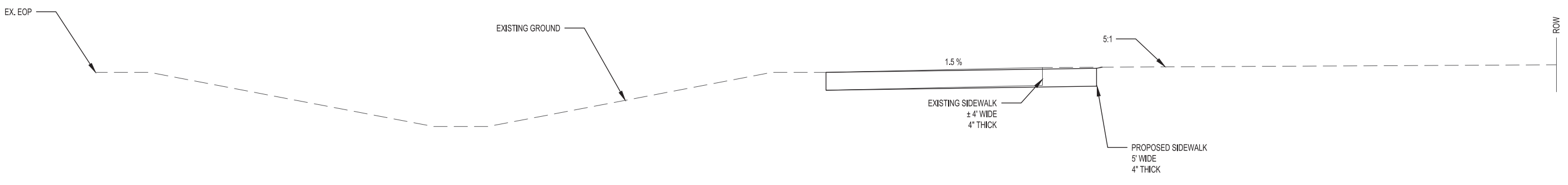
REVISIONS	DATE	BY	COUNTY	SECTION	ROUTE NO.	FED. ROAD DIST. NO. 7	FED. AID PROJECT	CONTRACT
			EFFINGHAM	22-0012-00-SW				98943
FIELD BOOK						DRAWN BY		
						BAF, MJH		
CHECKED BY						MJH, LRB		
FILE LOCATION						S:\2022\220656\SDS\SDS\HALLOW		
SAVE DATE						5/14/2024 15:40		
MILANO & GRUNLOH ENGINEERS, LLC 114 W. WASHINGTON AVE. PO BOX 897 EFFINGHAM, IL 62401 Phone: (217) 347-7262 (800) 677-2714 Email: mgenr@milengr.com Web: www.milengr.com Design Firm # 84-003108								
TYPICAL SHEET						SAFE ROUTES TO SCHOOL		
						22-0012-00-SW		
						DIETERICH, ILLINOIS		
SHEET #						5 OF 15		
JOB #						21204bg5		



SHEET 14
OAK ST
FAYETTE ST TO IL-33
Station 100+00 to Station 103+66



SHEET 14
IL-33
Station 621+00 to Station 622+00



SHEET 13
MAIN ST
Station 372+50 to Station 375+00

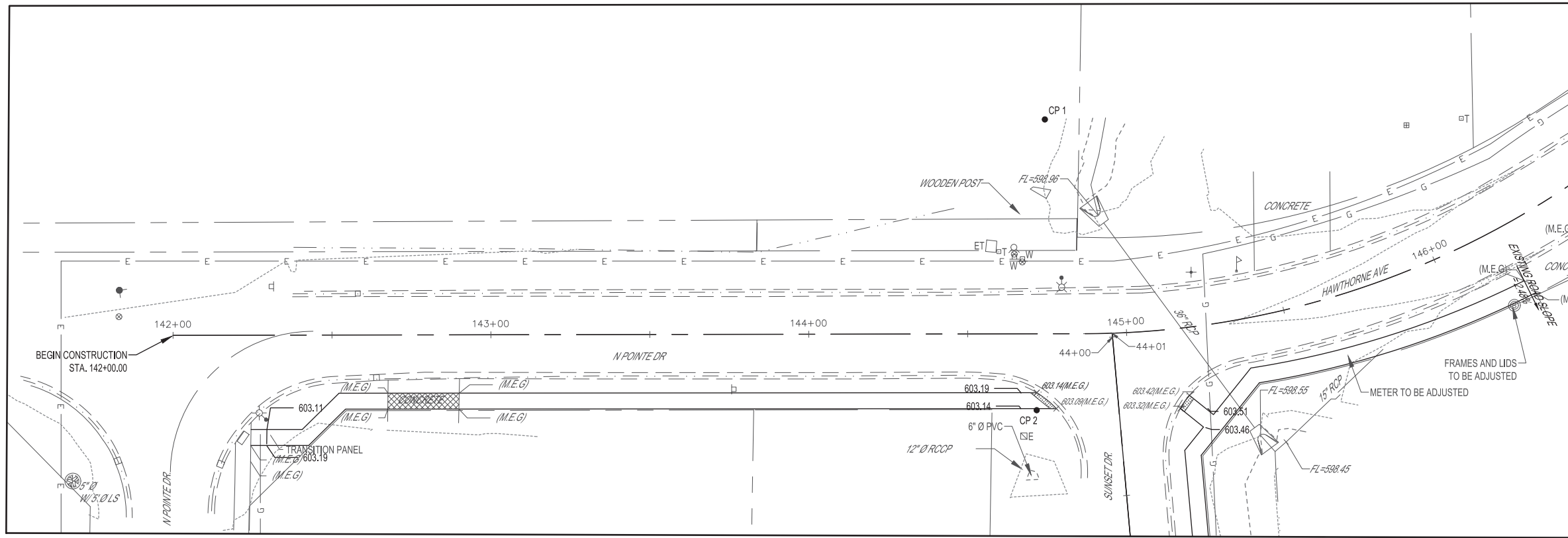
DATE		REVISION/ISSUED	
BY			
COUNTY	EFFINGHAM		
SECTION	22-0012-00-SW		
ROUTE NO.	FED. ROAD DIST. NO. 7		
DRAWN BY	BAF, MJH		
CHECKED BY	MJH, LRB		
FILE LOCATION	S:\2022\220655\DESIGN\SIDEWALK.DWG		
SAVE DATE	5/14/2024 15:40		
MILANO & GRUNLOH ENGINEERS, LLC 114 W. WASHINGTON AVE. PO BOX 897 EFFINGHAM, IL 62401 Phone: (217) 347-7262 (800) 677-2714 Email: mgenr@mgengineers.com Web: www.mgenr.com Design Firm # 184-003108			
TYPICAL SHEET		SAFE ROUTES TO SCHOOL	
22-0012-00-SW		DIETERICH, ILLINOIS	
SHEET #		6 OF 15	
JOB #		21204bg5	
CONTRACT		95943	



CONTROL POINTS

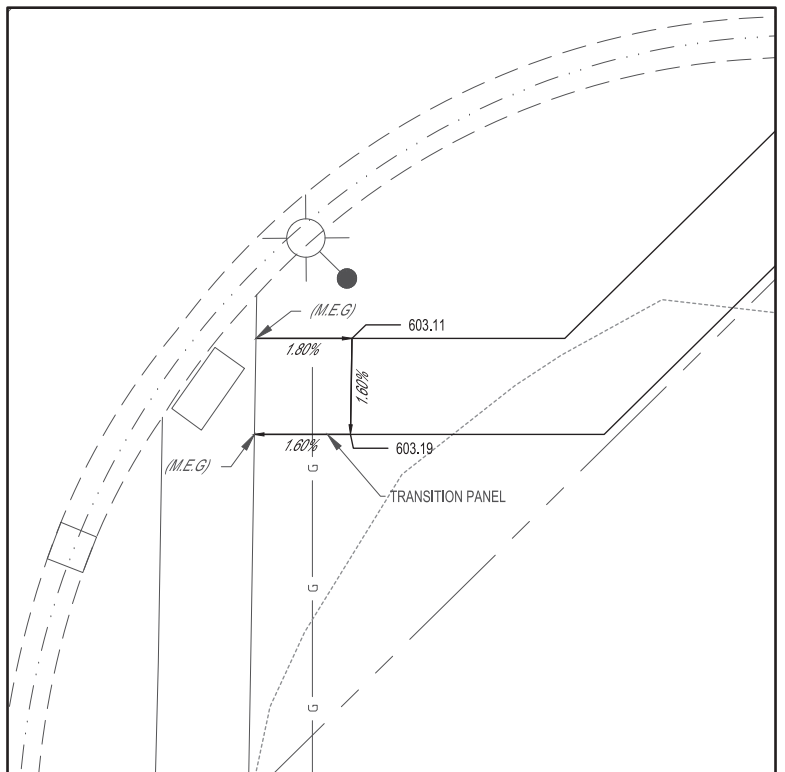
Point #	Northing	Easting	Elevation	Description
1	874381.25	969740.92	603.59	IP
2	874289.83	969738.36	603.16	IP
3	874146.34	969752.98	602.66	IP
5	874084.68	970634.65	601.88	IP
6	873817.24	969844.94	602.09	CONTROL POINT SET SE QUAD SUNSET DR & SYCAMORE AVE
7	873812.76	970582.63	599.80	NAIL & WHISKER SET FOR CONTROL SW QUAD SYCAMORE AVE & REDBUD DR
8	874448.61	970638.41	605.16	IP
10	872222.85	969970.71	599.60	IP
11	872236.09	970671.14	592.78	IP
12	872633.64	969977.30	600.10	BM @ FC/SW N OF W FAYETTE ST +/- 13.5' N OF EOP & +/- 8' E OF S END 8" DIA. PVC
13	872094.43	971028.20	587.72	IP
14	872072.72	971043.94	589.90	bm @ TOP OF NE BOLT ON FH
15	871589.48	970962.12	587.82	IP SET SW QUAD MAIN ST & SECTION ST
16	872674.55	970996.99	592.94	IP
17	871716.45	971034.46	588.84	bm @ TOP NE BOLT ON FH

MILANO & GRUNLOH ENGINEERS, LLC 114 W. WASHINGTON AVE. PO BOX 897 EFFINGHAM, IL 62401 Phone: (217) 347-7262 (800) 677-2714 Email: mgenr@engr.com Web: www.mgenr.com Design Firm # 184-003108		FIELD BOOK DRAWN BY BAF, MJH CHECKED BY MJH, LRB FILE LOCATION S:\220012-00-SW\220012-00-SW\TITLE.DWG SAVE DATE 5/22/2024 13:38	REVISIONS BY DATE	COUNTY EFFINGHAM SECTION 22-0012-00-SW ROUTE NO. 7 FED. ROAD DIST. NO. 7 FED. AID PROJECT: CONTRACT 96943
BENCHMARK & ALIGNMENT SHEET SAFE ROUTES TO SCHOOL 22-0012-00-SW DIETERICH, ILLINOIS		SHEET # 7 OF 15	JOB # 21204bg5	



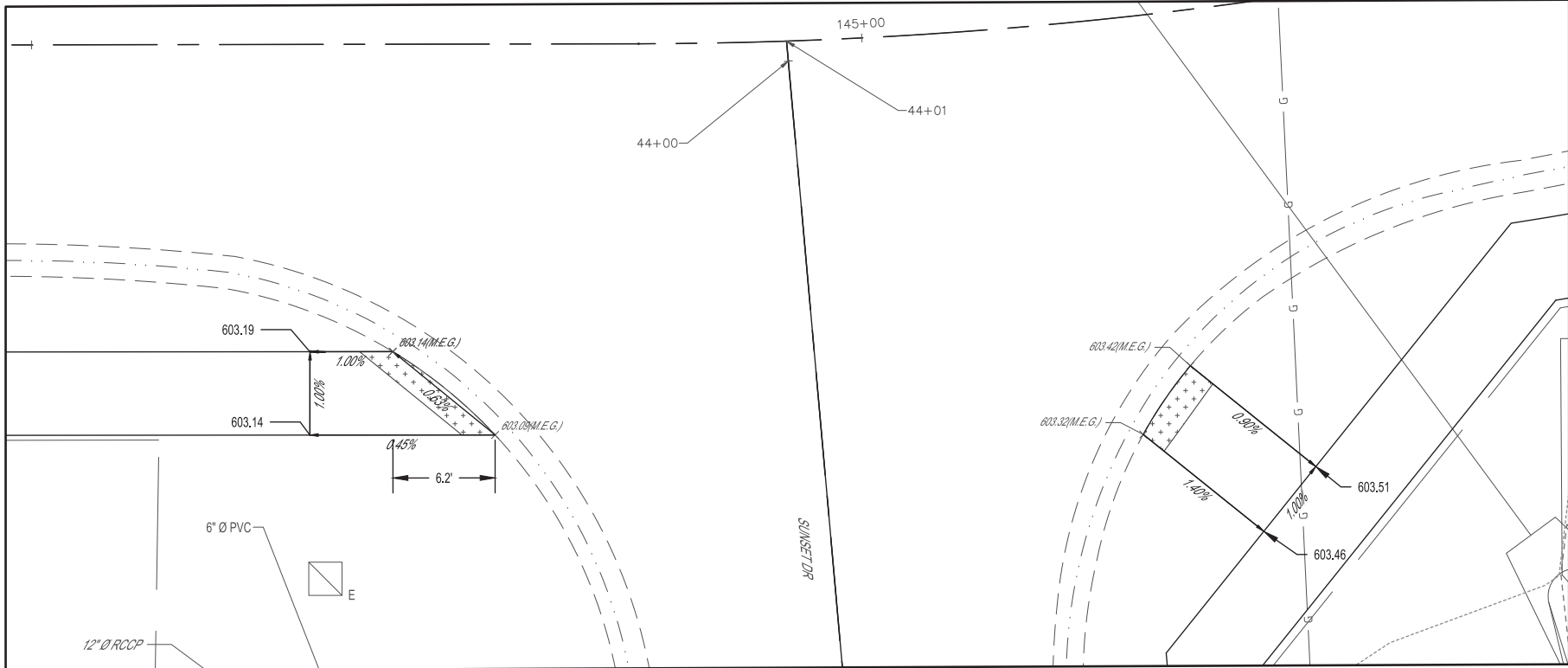
MATCH LINE STA. 146+50.00

MATCH LINE STA. 43+37.80



NORTH POINTE DR & HAWTHORNE AVE
INTERSECTION DETAIL

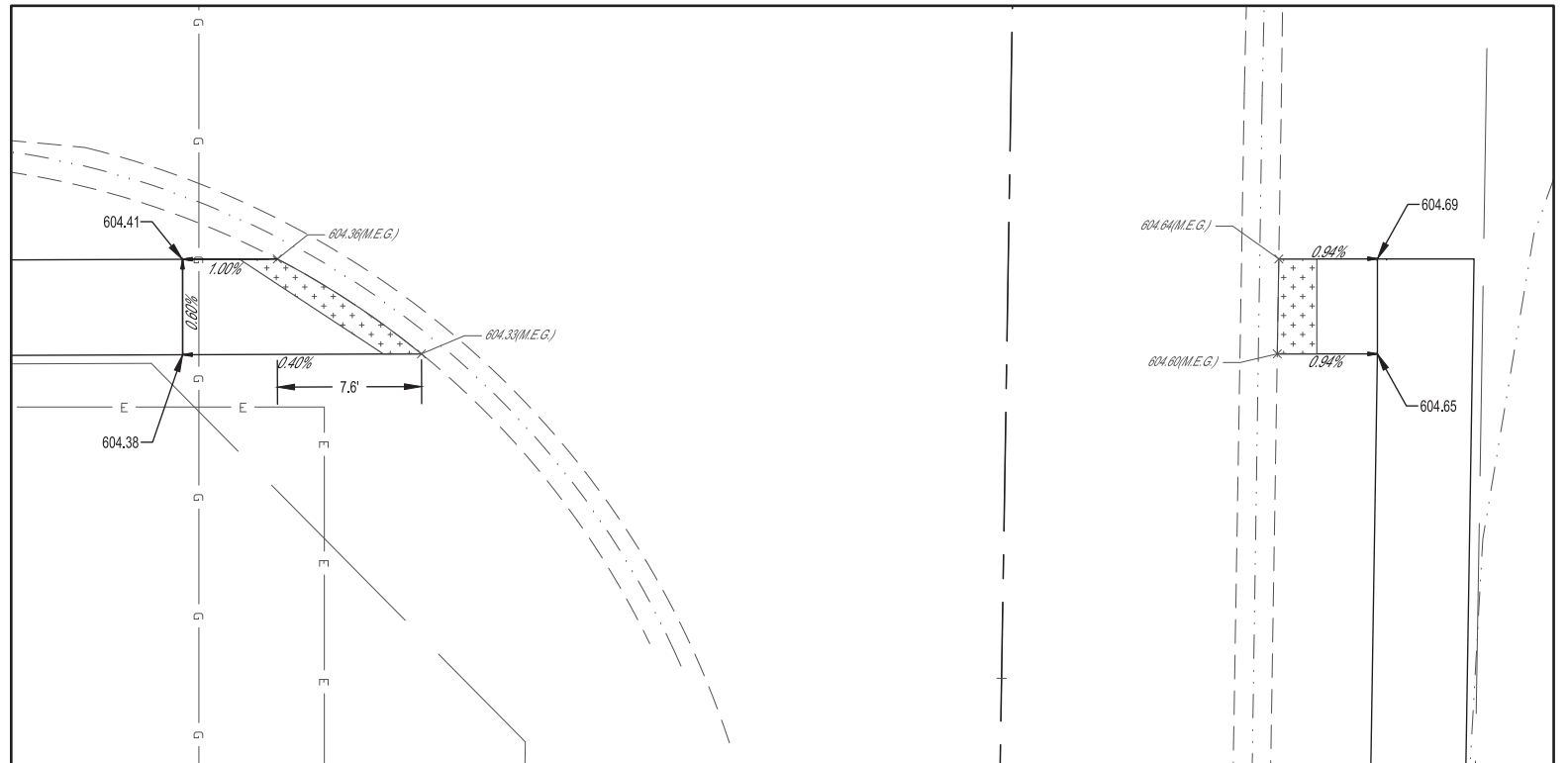
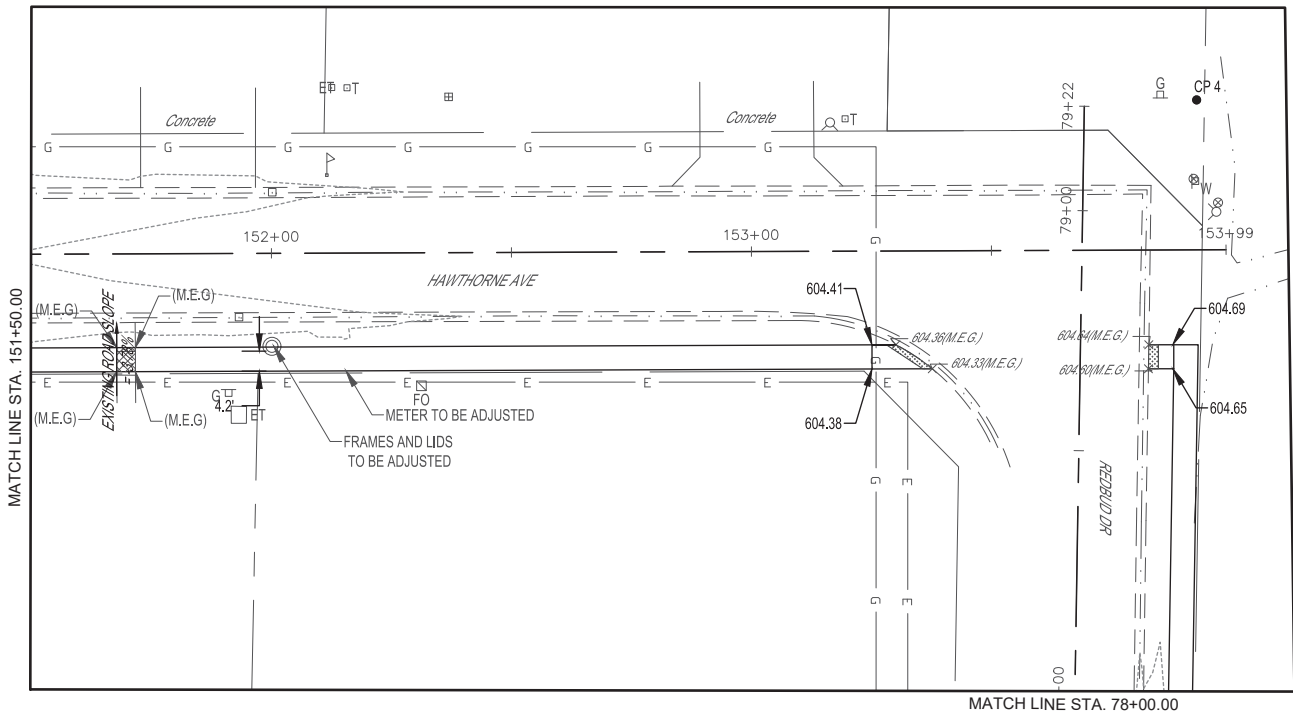
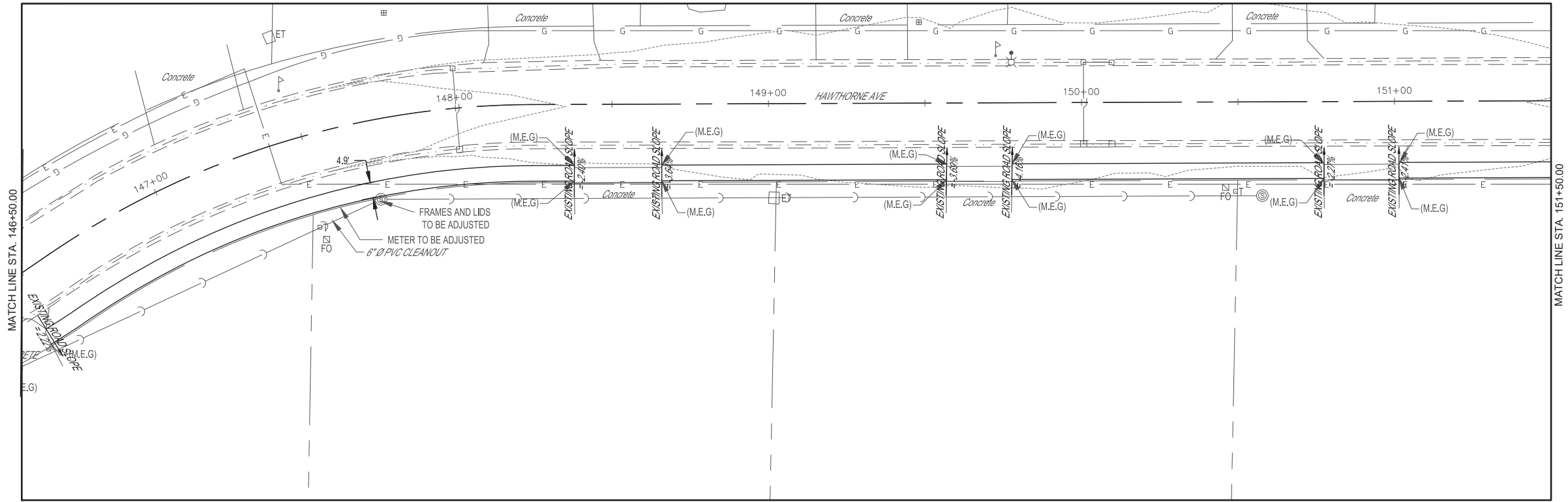
0 2.5 5



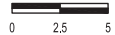
SUNSET DR & HAWTHORNE AVE
INTERSECTION DETAIL

0 2.5 5

DATE	REVISION/ISSUED
BY	
COUNTY	EFFINGHAM
SECTION	22-0012-00-SW
ROUTE NO.	FED. ROAD DIST. NO. 7
FED. AID PROJECT	S 2202122465SDMSSEHALLOW
CONTRACT	95943
FIELD BOOK	
DRAWN BY	BAF, MJH
CHECKED BY	MJH, LRB
FILE LOCATION	
SAVE DATE	5/14/2024 15:40
MILANO & GRUNLOH ENGINEERS, LLC 114 W. WASHINGTON AVE. PO BOX 897 EFFINGHAM, IL 62401 Phone: (217) 347-7262 (800) 677-2714 Email: mgenr@milengr.com Web: www.milengr.com Design Firm # 184-003108	
SIDEWALK PLANS 142+00.00-146+50.00 SAFE ROUTES TO SCHOOL 22-0012-00-SW DIETERICH, ILLINOIS	
SHEET #	8 OF 15
JOB #	21204bg5



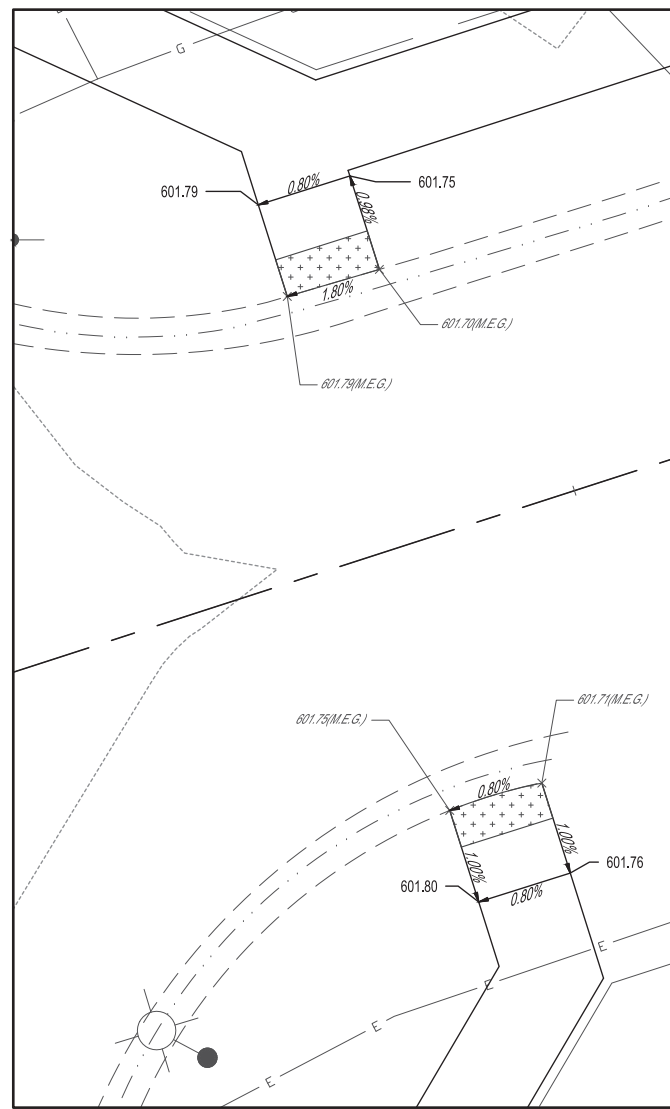
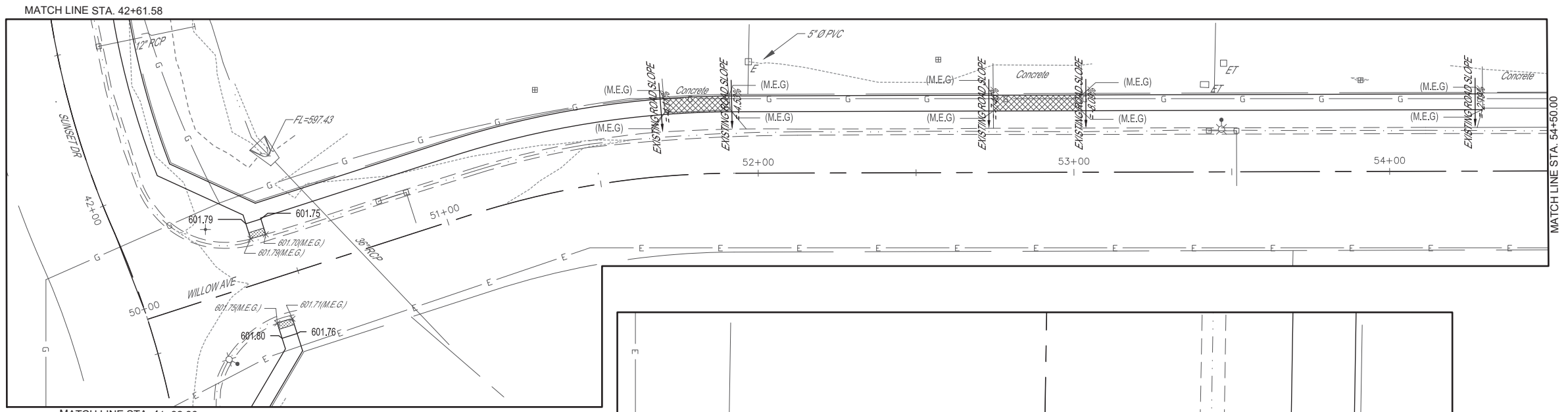
REDBUD DR & HAWTHORNE AVE
INTERSECTION DETAIL



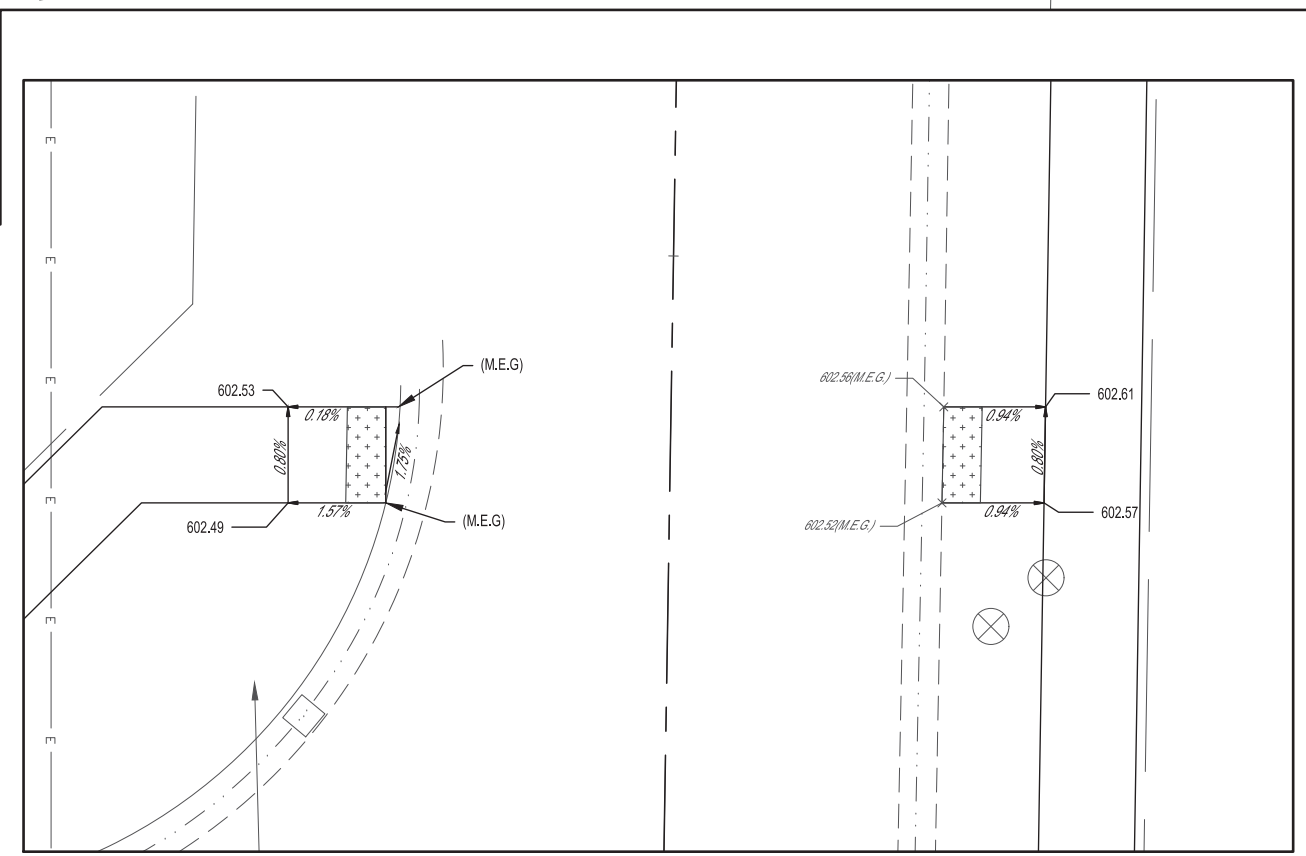
DATE	REVISION/ISSUED
BY	COUNTY
	EFFINGHAM
	ILLINOIS
	CONTRACT 98943
SECTION	ROUTE NO.
22-0012-00-SW	
FED. ROAD DIST. NO. 7	FED. AID PROJECT
	S12201220655SDSDSDHALLOWG
FIELD BOOK	SAVE DATE
	5/14/2024 15:40
DRAWN BY	FILE LOCATION
BAF, MJH	
CHECKED BY	
MJH, LRB	

MILANO & GRUNLOH ENGINEERS, LLC
 114 W. WASHINGTON AVE. | PO BOX 897
 EFFINGHAM, IL 62401
 Phone: (217) 347-7262 | (800) 677-2714
 Email: mgenr@milgrun.com
 Web: www.milgrun.com
 Design Firm # 184-003108

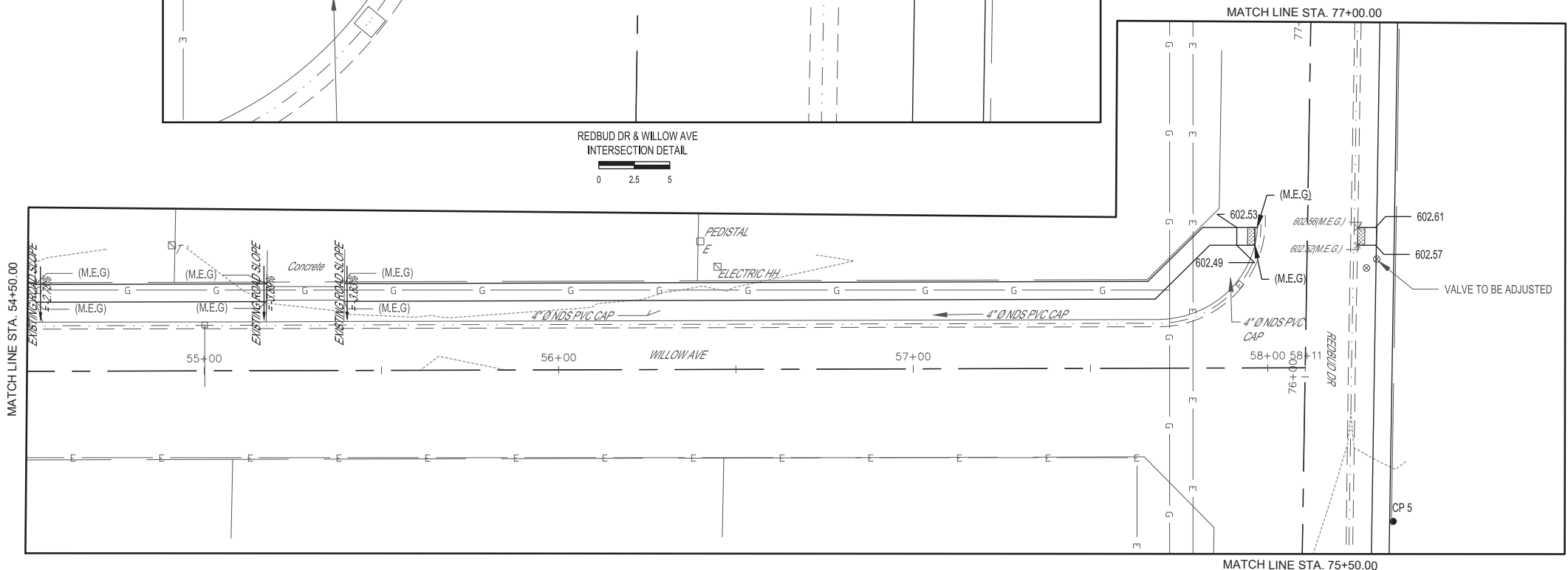
SIDEWALK PLANS 146+50.00-153+98.00 SAFE ROUTES TO SCHOOL 22-0012-00-SW DIETERICH, ILLINOIS	SHEET # 9 OF 15 JOB # 21204bg5
---	---



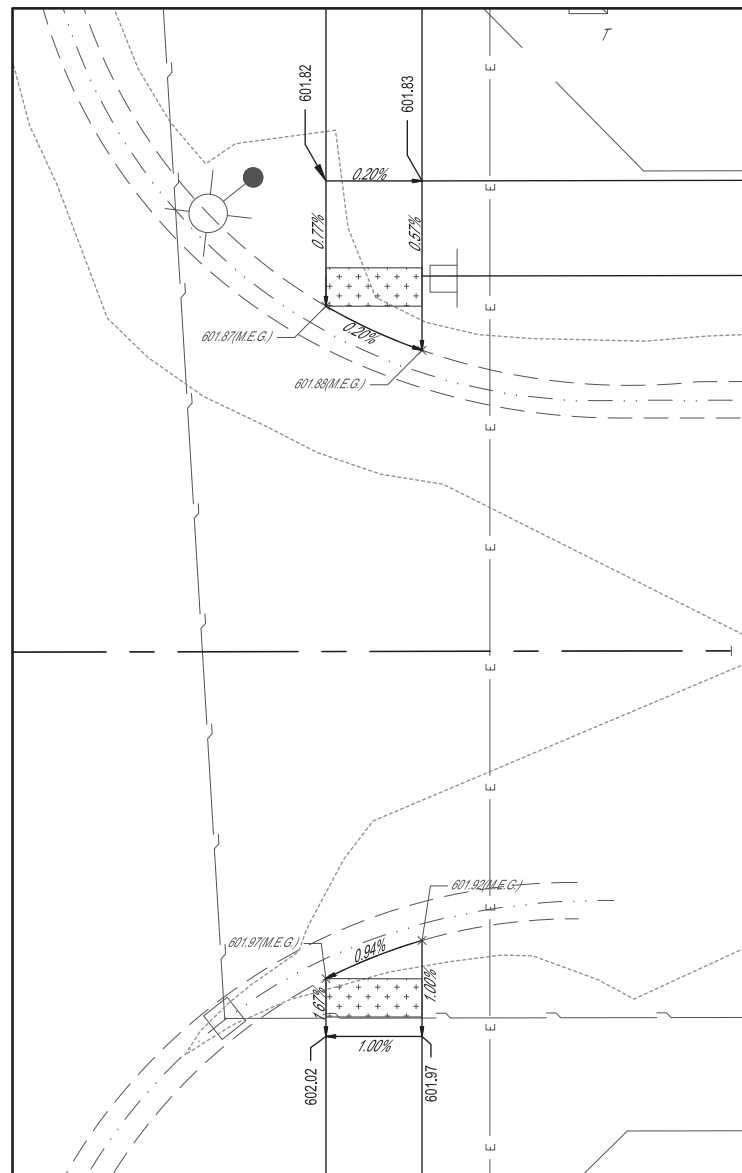
SUNSET DR & WILLOW AVE
INTERSECTION DETAIL



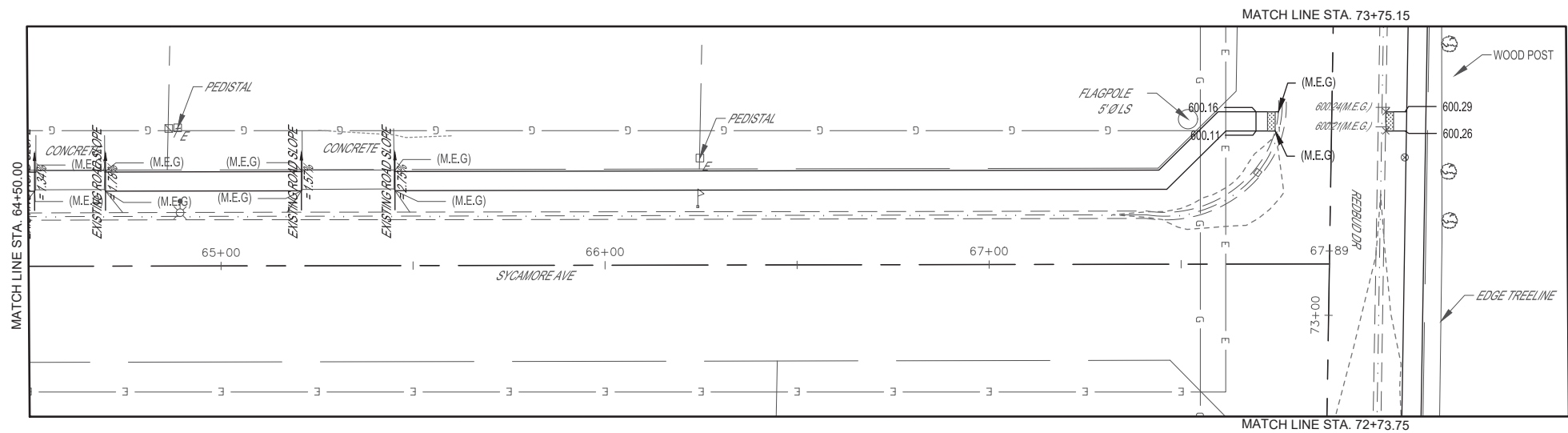
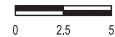
REDBUD DR & WILLOW AVE
INTERSECTION DETAIL



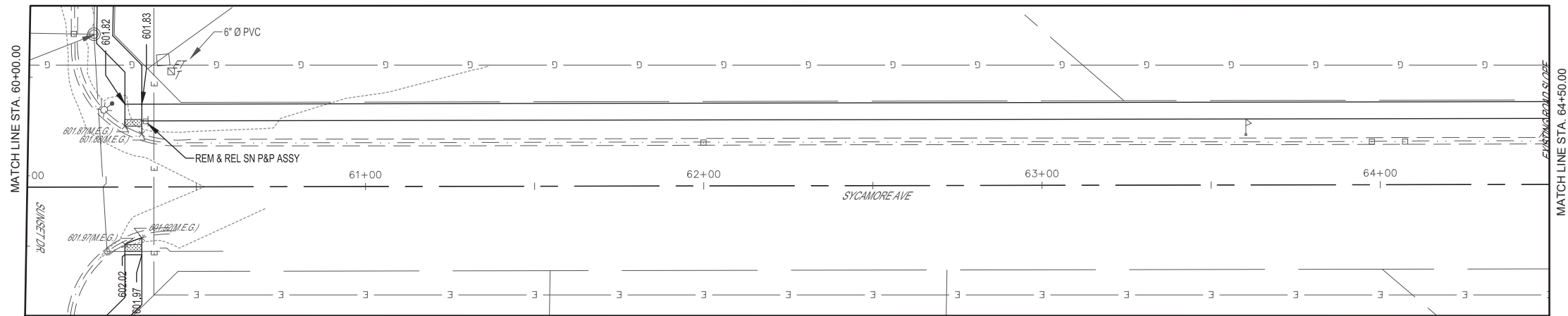
DATE	REVISION/ISSUED
BY	
COUNTY	EFFINGHAM
SECTION	22-0002-00-SW
ROUTE NO.	FED. ROAD DIST. NO. 7
FIELD BOOK	S2202120465SDSDEHALLOW
DRAWN BY	BAF, MJH
CHECKED BY	MJH, LRB
FILE LOCATION	S2202120465SDSDEHALLOW
SAVE DATE	5/14/2024 15:40
MILANO & GRUNLOH ENGINEERS, LLC 114 W. WASHINGTON AVE. PO BOX 897 EFFINGHAM, IL 62401 Phone: (217) 347-7262 (800) 677-2714 Email: mgenr@milgengr.com Web: www.milgengr.com Design Firm # 184-003108	
SIDEWALK PLANS 59+00.00-58+00.00 SAFE ROUTES TO SCHOOL 22-0002-00-SW DIETERICH, ILLINOIS	
SHEET # 10 OF 15	
JOB # 21204bg5	



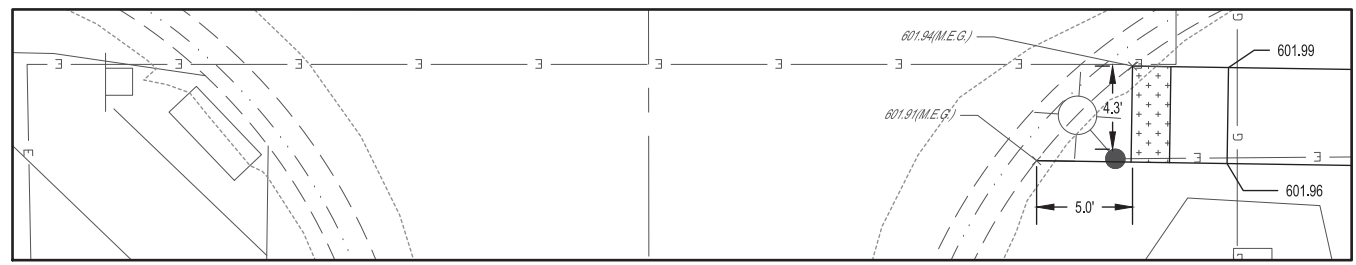
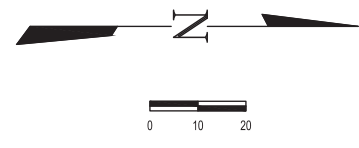
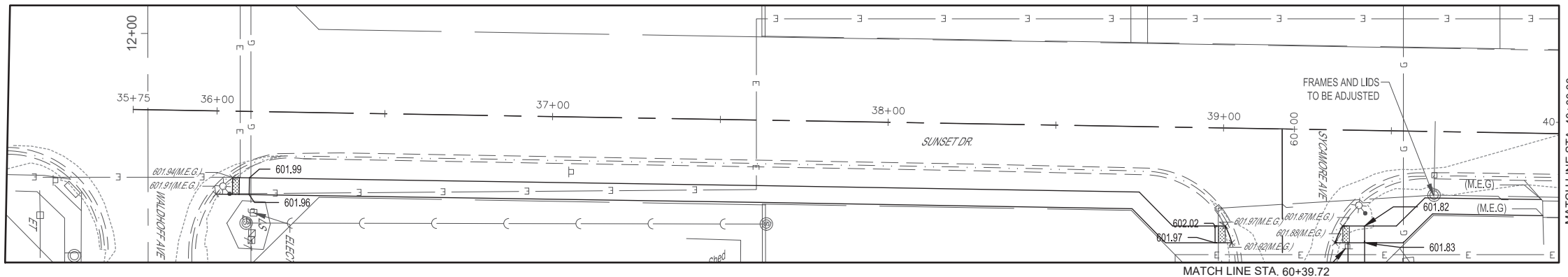
SUNSET DR & SYCAMORE AVE
INTERSECTION DETAIL



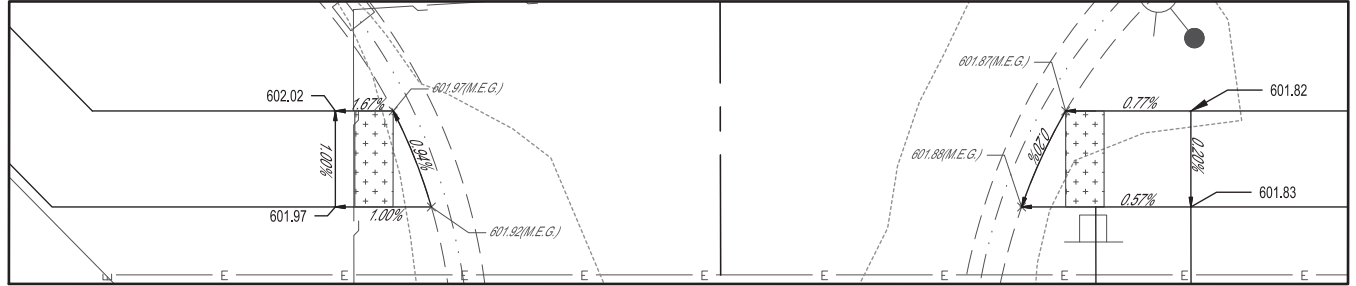
REDBUD DR & SYCAMORE AVE
INTERSECTION DETAIL



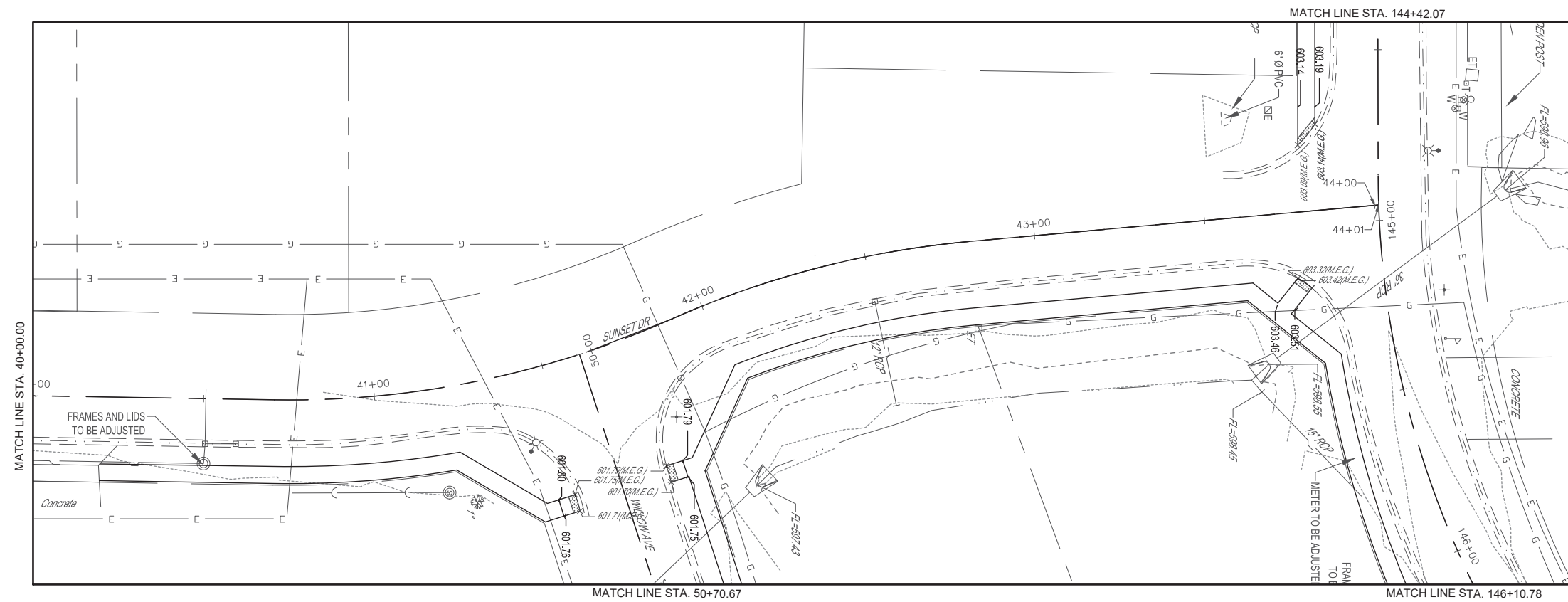
FIELD BOOK	DATE	REVISION ISSUED
	BY	
DRAWN BY	COUNTY	EFFINGHAM
	SECTION	22-0012-00-SW
CHECKED BY	FED. ROAD DIST. NO. 7	ILLINOIS
	FED. AID PROJECT	CONTRACT 98943
FILE LOCATION	S:\2212\22-0012-00-SW\DESIGN\DRAWING	
SAVE DATE	5/14/2024 15:40	
MILANO & GRUNLOH ENGINEERS, LLC 114 W. WASHINGTON AVE. PO BOX 897 EFFINGHAM, IL 62401 Phone: (217) 347-7262 (800) 677-2714 Email: mgenr@milengr.com Web: www.milengr.com Design Firm # 184-003108		
SIDEWALK PLANS 66+00.00-67+87.57 SAFE ROUTES TO SCHOOL 22-0012-00-SW DIETERICH, ILLINOIS		
SHEET #		
11 OF 15		
JOB #		
21204bg5		



SUNSET DR & WALDO AVE
INTERSECTION DETAIL

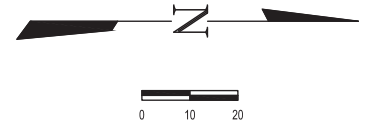
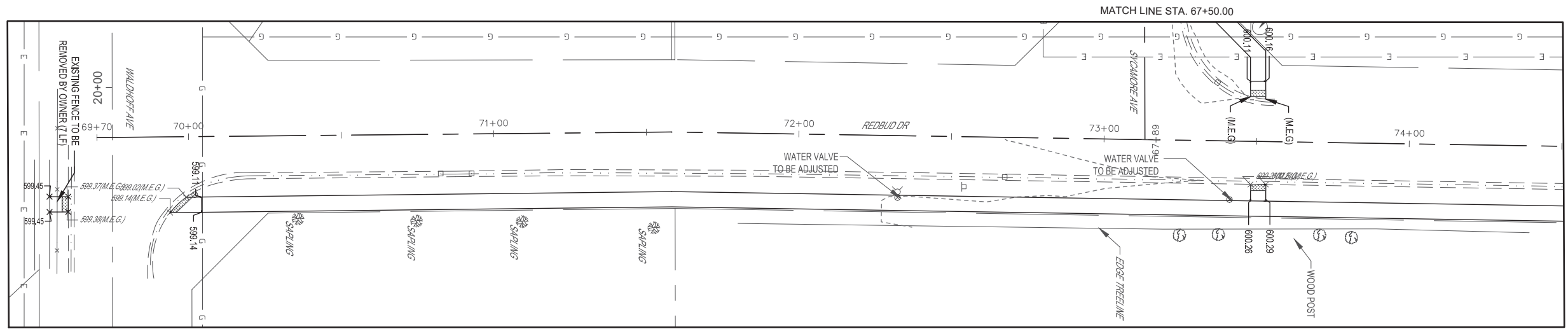


SUNSET DR & SYCAMORE AVE
INTERSECTION DETAIL

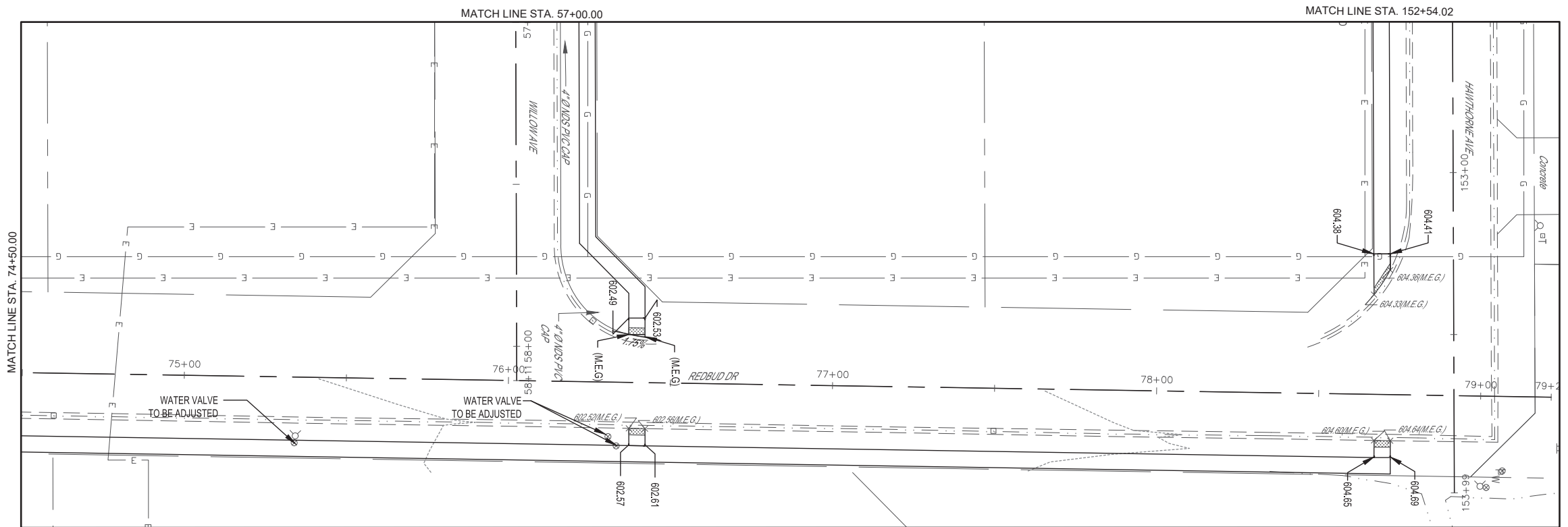


NOTE: SEE SHEET 7 FOR SUNSET DR & HAWTHORNE AVE INTERSECTION DETAIL.
SEE SHEET 9 FOR SUNSET DR & WILLOW AVE INTERSECTION DETAIL.

BY	DATE	REVISION/ISSUED
COUNTY	EFFINGHAM	
SECTION	22-0012-00-SW	
ROUTE NO.	FED. ROAD DIST. NO. 7	
FILE LOCATION	S:\2022\220656\SDS\SE\HALLOW	
SAVE DATE	5/14/2024 15:40	
FIELD BOOK		
DRAWN BY	BAF, MJH	
CHECKED BY	MJH, LRB	
FILE LOCATION	S:\2022\220656\SDS\SE\HALLOW	
SAVE DATE	5/14/2024 15:40	
MILANO & GRUNLOH ENGINEERS, LLC 114 W. WASHINGTON AVE. PO BOX 897 EFFINGHAM, IL 62401 Phone: (217) 347-7262 (800) 677-2714 Email: mgenr@milengr.com Web: www.milengr.com Design Firm # 184-003108		
SIDEWALK PLANS 36+00.00-44+00.00 SAFE ROUTES TO SCHOOL 22-0012-00-SW DIETERICH, ILLINOIS		
SHEET #		
12 OF 15		
JOB #		
21204bg5		

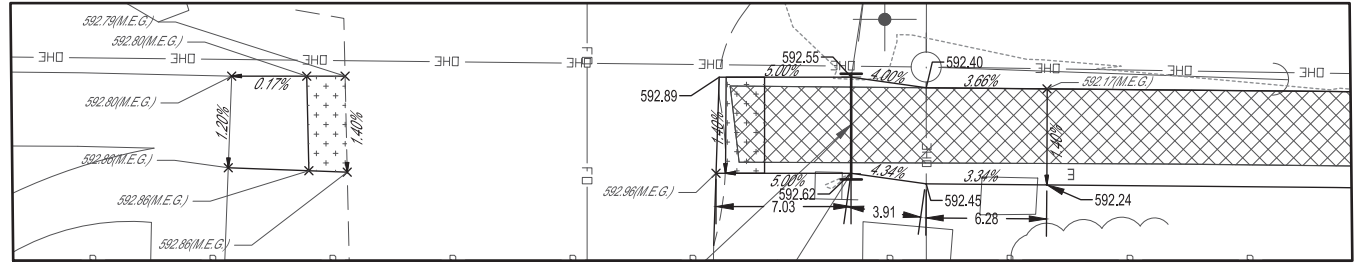
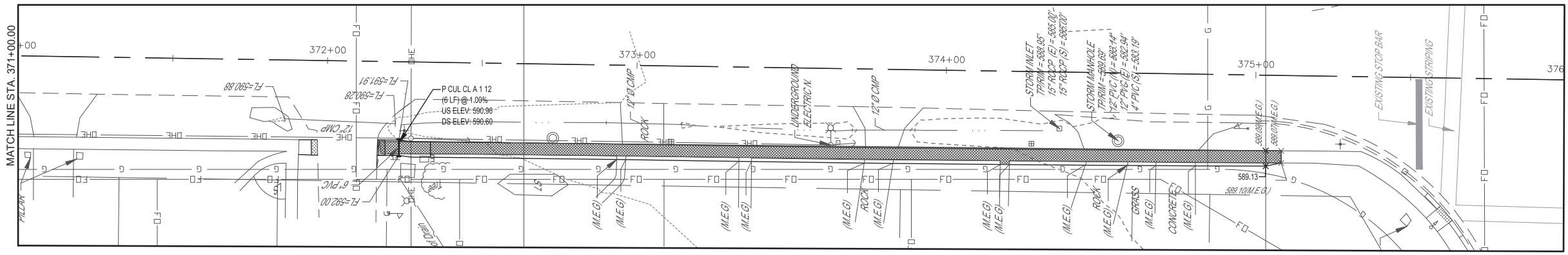


REDBUD DR & WALDO AVE
INTERSECTION DETAIL

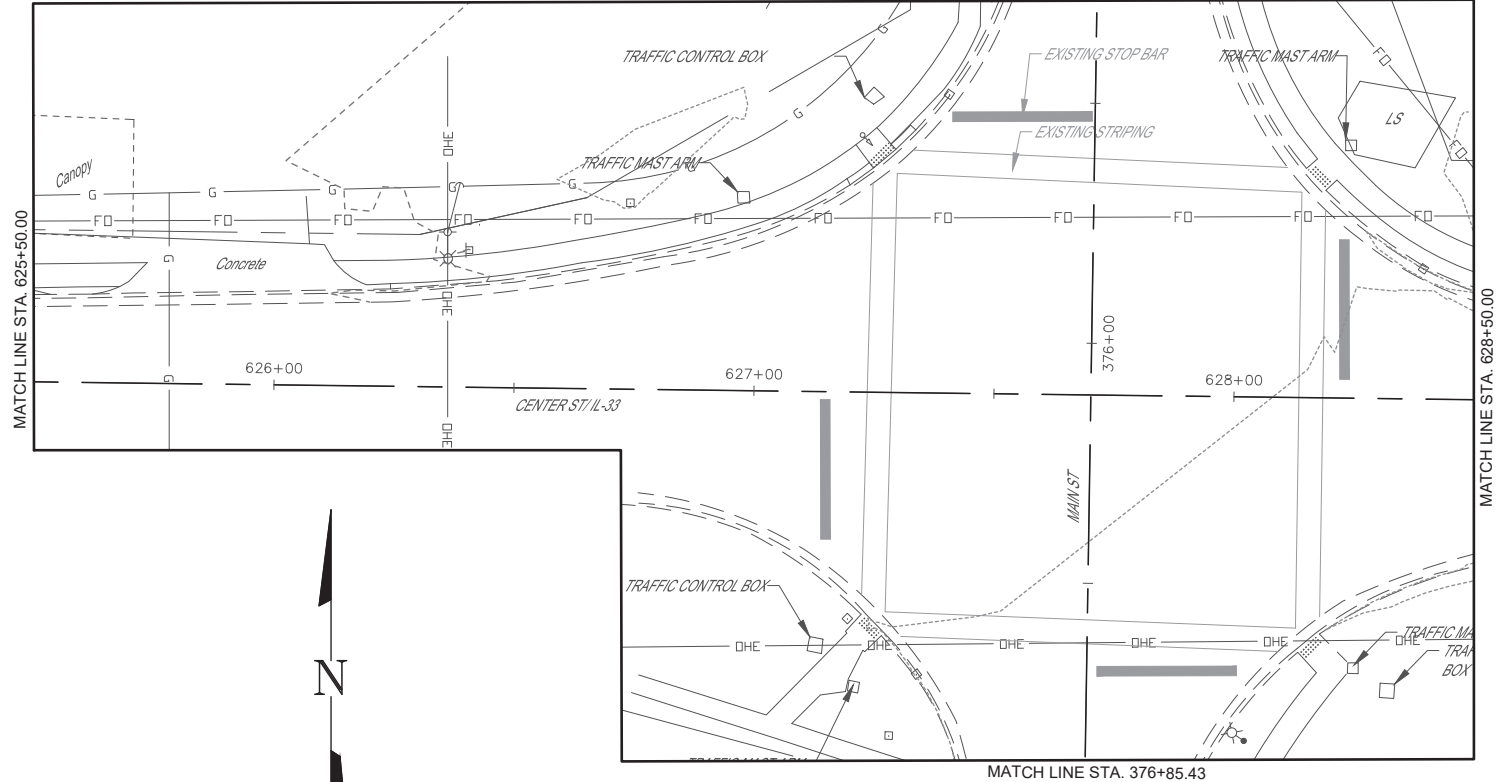


NOTE: SEE SHEET 8 FOR REDBUD DR & HAWTHORNE AVE INTERSECTION DETAIL.
SEE SHEET 9 FOR REDBUD DR & WILLOW AVE INTERSECTION DETAIL.
SEE SHEET 10 FOR REDBUD DR & SYCAMORE AVE INTERSECTION DETAIL.

DATE	REVISIONS	BY	DATE	COUNTY	SECTION	ROUTE NO.	FEED AD PROJECT	FEED AD PROJECT	CONTRACT	
				EFFINGHAM	22-002-00-SW				98943	
				ILLINOIS	FEED ADIST NO. 7					
				BAF, MJH						
				MJH, LRB						
				S222122465SDSDEHALONG						
				FILE LOCATION						
				SAVE DATE					5/14/2024 15:40	
MILANO & GRUNLOH ENGINEERS, LLC 114 W. WASHINGTON AVE. PO BOX 897 EFFINGHAM, IL 62401 Phone: (217) 347-7262 (800) 677-2714 Email: mgenr@engr.com Web: www.mgenr.com Design Firm # 184-003108										
SIDEWALK PLANS 79+00.00-79+00.00 SAFE ROUTES TO SCHOOL 22-002-00-SW DIETERICH, ILLINOIS										
				SHEET #	13 OF 15					
				JOB #	21204bg5					

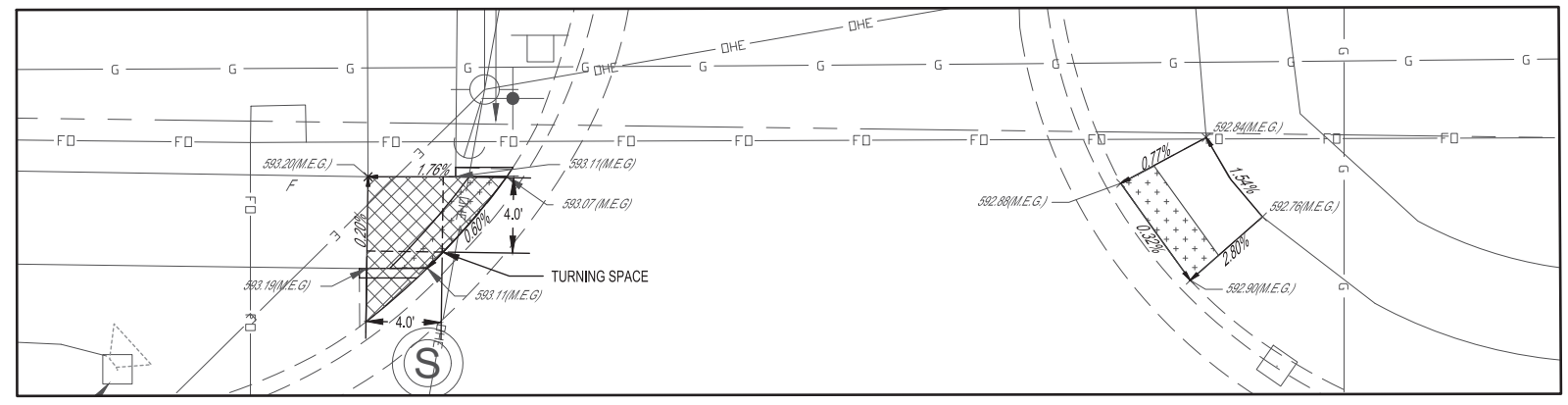
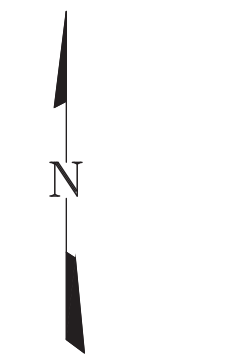
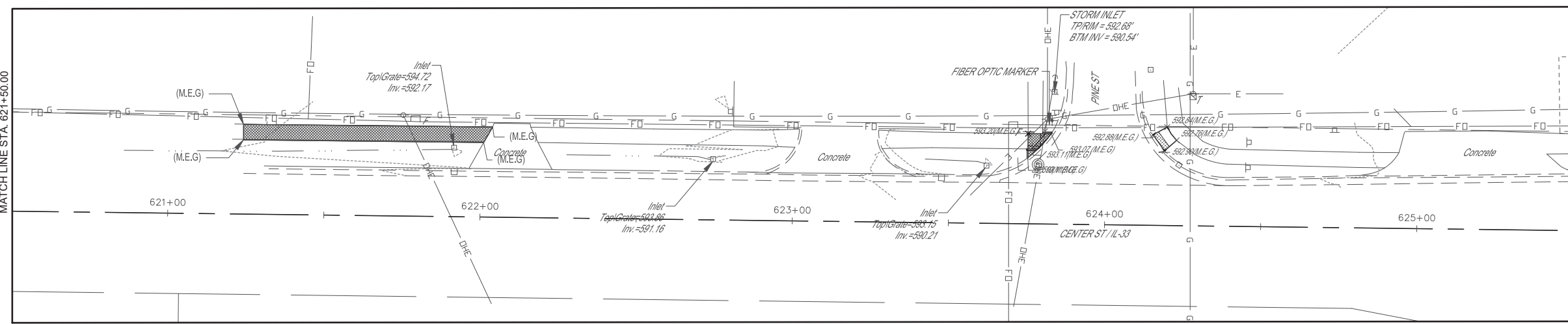
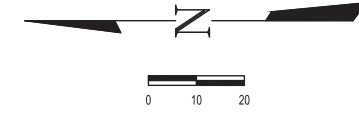
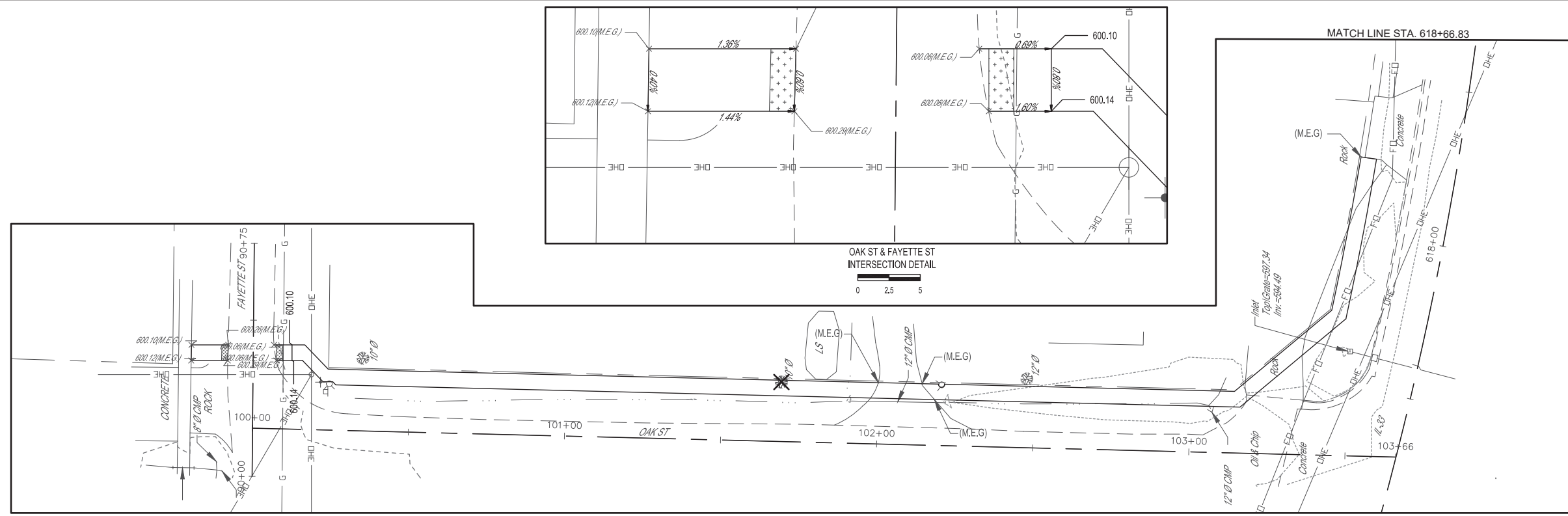


N MAIN ST & FAYETTE ST
INTERSECTION DETAIL



NOTE: 1) INTERSECTION RECONSTRUCTION IN 2026

DATE	REVISION	BY	DATE	REVISION
ROUTE NO.	22-0012-00-SW	COUNTY	EFFINGHAM	
SECTION	00-SW	FILE NO.	S 2202122465508508HALLOW	
FIELD BOOK	BAF, MJH	FILE LOCATION	S 2202122465508508HALLOW	
DRAWN BY	MJH, LRB	SAVE DATE	5/14/2024 15:40	
CHECKED BY	MJH, LRB	CONTRACT	98943	
FILE LOCATION	S 2202122465508508HALLOW			
SAVE DATE	5/14/2024 15:40			
<p>MILANO & GRUNLOH ENGINEERS, LLC 114 W. WASHINGTON AVE. PO BOX 897 EFFINGHAM, IL 62401 Phone: (217) 347-7262 (800) 677-2714 Email: mgen@mgengineers.com Web: www.mgengineers.com Design Firm # 184-003108</p>				
<p>SIDEWALK PLANS 370+00.00-376+85.43 SAFE ROUTES TO SCHOOL 22-0012-00-SW DIETERICH, ILLINOIS</p>				
<p>SHEET # 14 OF 15</p>				
<p>JOB # 21204bg5</p>				



N PINE ST & IL-33
INTERSECTION DETAIL
0 2.5 5

DATE	REVISION/ISSUED
BY	
COUNTY	EFFINGHAM
SECTION	22-0012-00-SW
ROUTE NO.	FED. ROAD DIST. NO. 7
FILE LOCATION	S:\22012\22065\DESIGN\SERIAL\LONG
FIELD BOOK	
DRAWN BY	BAF, MJH
CHECKED BY	MJH, LRB
FILE LOCATION	S:\22012\22065\DESIGN\SERIAL\LONG
SAVE DATE	5/14/2024 15:40
MILANO & GRUNLOH ENGINEERS, LLC 114 W. WASHINGTON AVE. PO BOX 897 EFFINGHAM, IL 62401 Phone: (217) 347-7262 (800) 677-2714 Email: mge@milanogrunloh.com Web: www.milanogrunloh.com Design Firm # 184-003108	
SIDEWALK PLANS 100+00.00-103+66.00 SIDEWALK PLANS 621+50.00-625+00.00 SAFE ROUTES TO SCHOOL 22-0012-00-SW DIETERICH-ILLINOIS	
SHEET #	15 OF 15
JOB #	21204bg5
CONTRACT	98943