

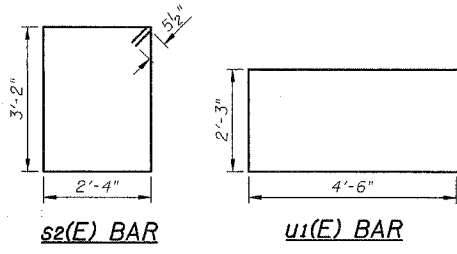
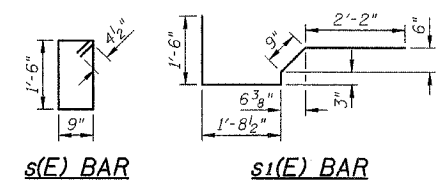
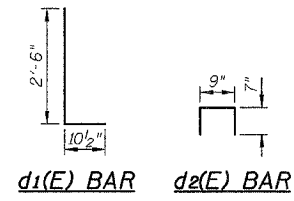
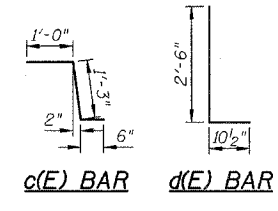
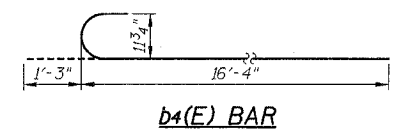
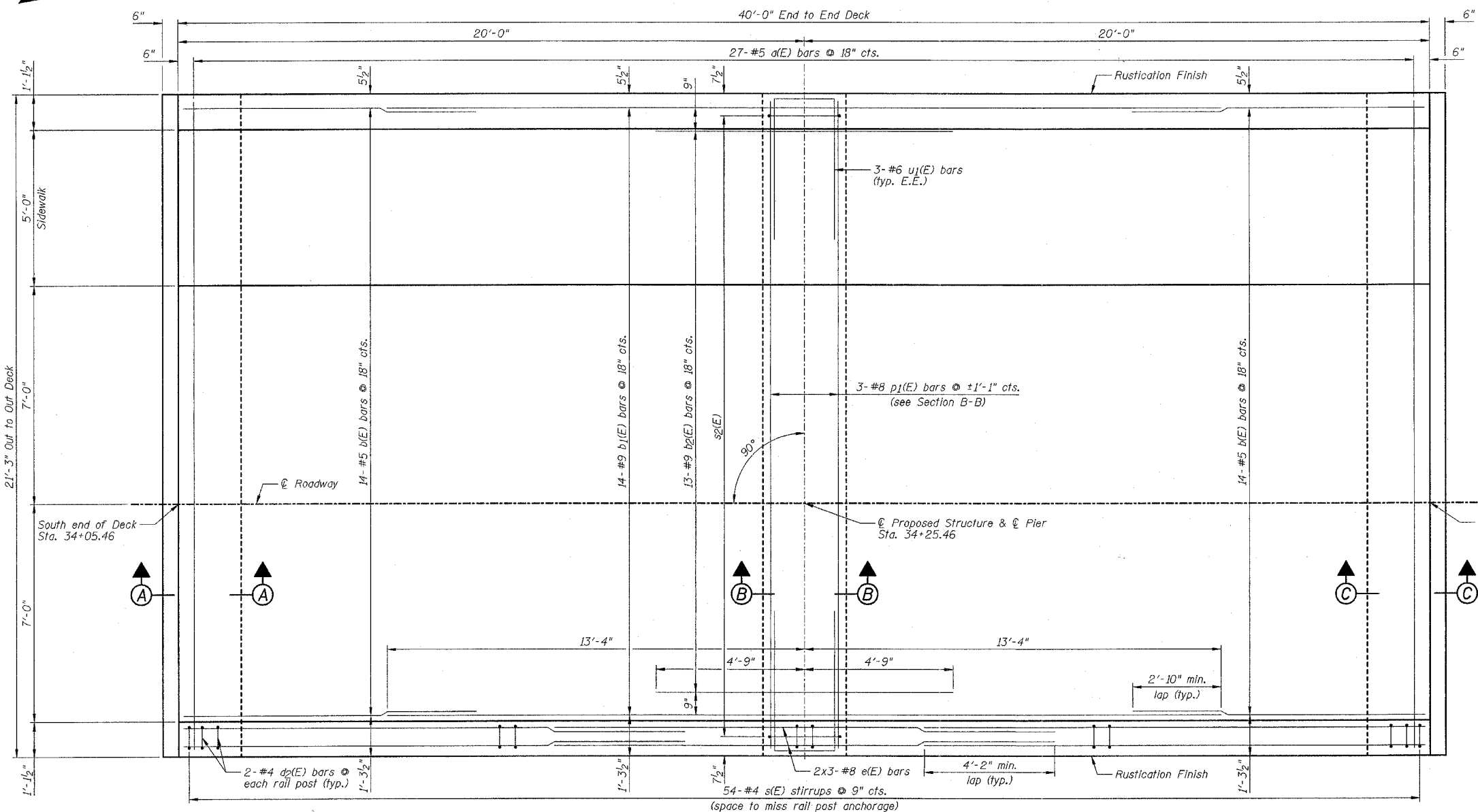
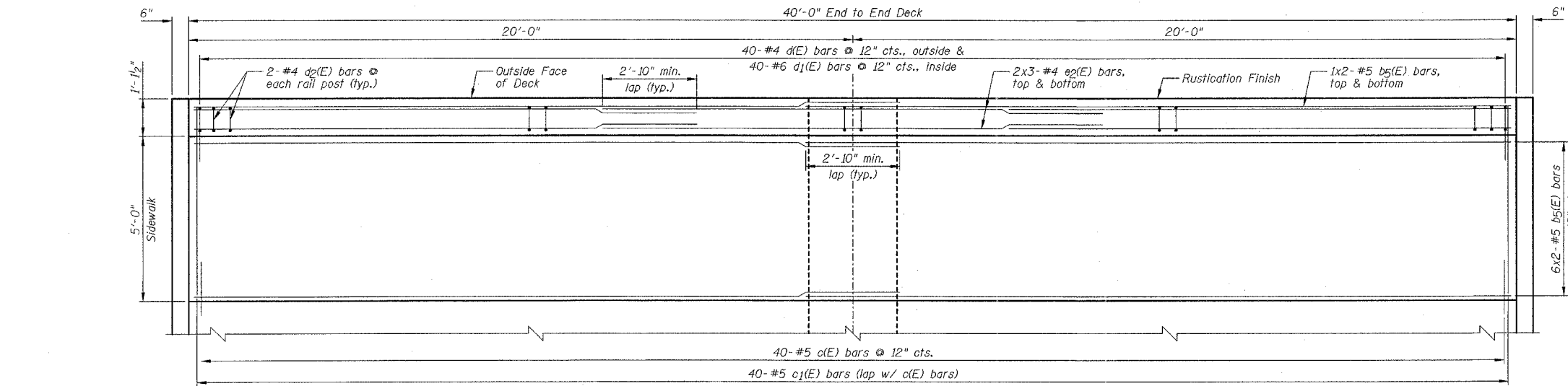
F.A. RTE.	SECTION	COUNTY	TOTAL SHEETS	SHEET NO.
		POPE	60	29
STA.		TO STA.		
FED. ROAD DIST. NO.	ILLINOIS	FED. AID PROJECT		

SHEET NO. B3  
OF 11 SHEETS

STATE OF ILLINOIS  
DEPARTMENT OF TRANSPORTATION

**SUPERSTRUCTURE  
BILL OF MATERIAL**

Bar	No.	Size	Length	Shape
a(E)	27	#5	20'-8"	—
a1(E)	46	#5	19'-11 1/2"	—
b(E)	28	#5	9'-4"	—
b1(E)	14	#9	26'-8"	—
b2(E)	13	#9	9'-6"	—
b3(E)	28	#8	21'-11"	—
b4(E)	26	#8	17'-7"	—
b5(E)	16	#5	21'-3"	—
c(E)	40	#5	2'-9"	—
c1(E)	40	#5	5'-7"	—
d(E)	40	#4	3'-4 1/2"	—
d1(E)	40	#6	3'-4 1/2"	—
d2(E)	20	#4	1'-11"	—
e(E)	6	#8	16'-0"	—
e1(E)	4	#8	21'-11"	—
e2(E)	12	#4	15'-1"	—
p1(E)	11	#8	20'-9"	—
s(E)	54	#4	5'-3"	—
s1(E)	42	#4	6'-4 1/2"	—
s2(E)	21	#5	11'-11"	—
u1(E)	6	#6	11'-3"	—
Item	Unit	Quantity		
Concrete Superstructure	Cu Yd	50.0		
Bridge Deck Grooving	Sq Yd	51		
Protective Coat	Sq Yd	95		
Reinforcement Bars, Epoxy Coated	Pound	9340		



- NOTES:**
- 1.) Work this sheet with Sheets B4 & B5.
  - 2.) Reinforcement bars designated (E) shall be epoxy coated.
  - 3.) E.E. denotes Each End.
  - 4.) See Sheet B4 for Section A-A thru Section C-C.
  - 5.) Bars indicated thus 2x3-#8 etc. indicates 2 lines of bars with 3 lengths per line.
  - 6.) See BIO for Rustication Finish details.

REVISIONS	DATE
NAME DJM	4/02/07

ILLINOIS DEPARTMENT OF TRANSPORTATION  
SUPERSTRUCTURE DECK (TOP OF SLAB)  
DIXON SPRINGS STATE PARK  
ROAD OVER HILLS BRANCH  
POPE COUNTY  
STRUCTURE NO. 076-9924  
DESIGNED BY: MJG  
DATE: 11/30/06  
DRAWN BY: DJM  
CHECKED BY: MSW