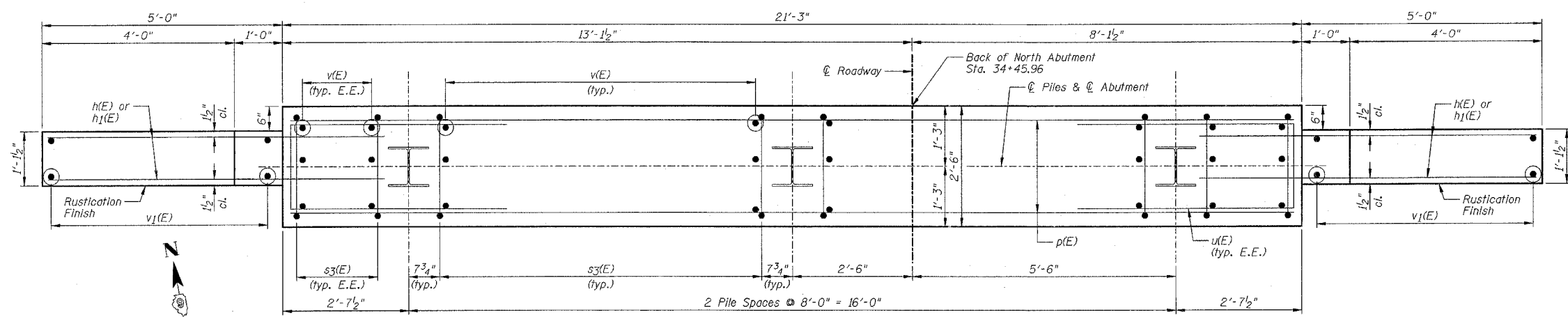


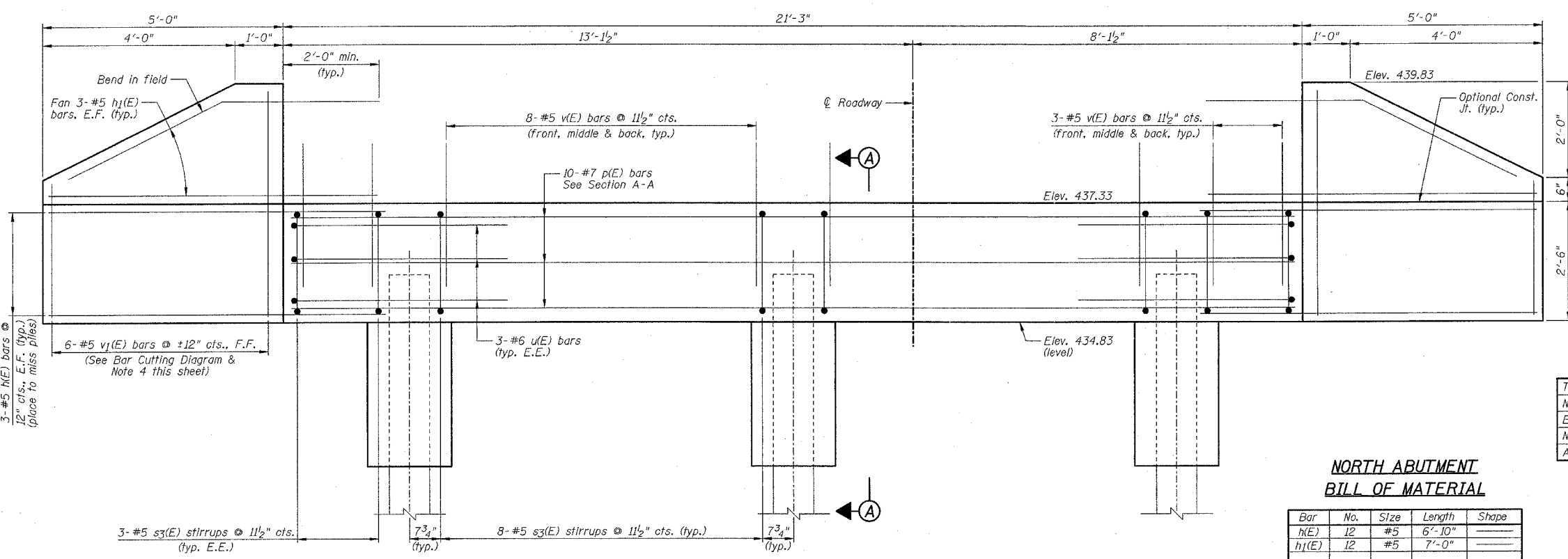
STATE OF ILLINOIS
DEPARTMENT OF TRANSPORTATION

CONTRACT NO. 44924			
F.A. RTE.	SECTION	COUNTY	TOTAL SHEETS
		POPE	60
STA.	TO STA.		
FED. ROAD DIST. NO.	ILLINOIS FED. AID PROJECT		

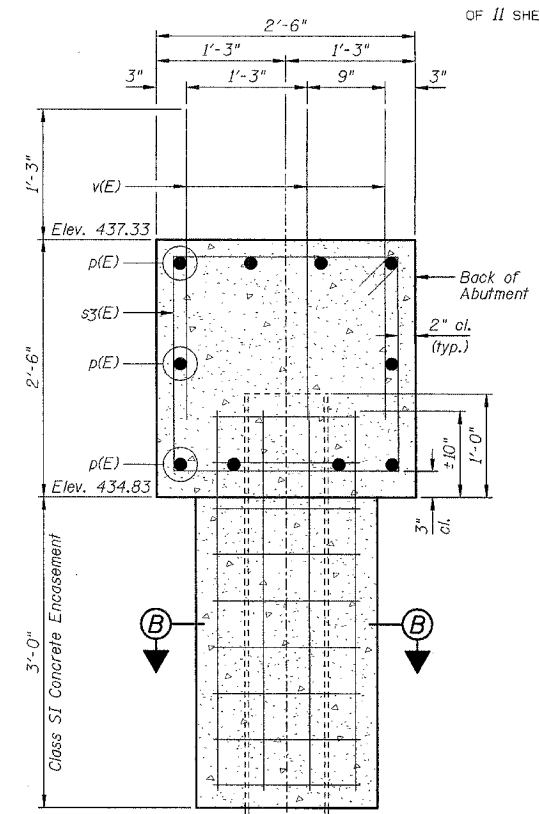
SHEET NO. B8
OF 11 SHEETS



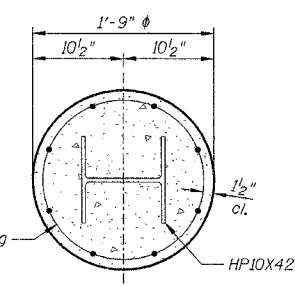
PLAN



ELEVATION
(Looking North)



SECTION A-A



SECTION B-B

PILE DATA:

Type	HP10x42 Steel
No. Req'd.	3 Piles
Est. Length	10 Feet
Nominal Required Bearing	300 kips
Allowable Resistance Available	100 kips

NORTH ABUTMENT
BILL OF MATERIAL

Bar	No.	Size	Length	Shape
h(E)	12	#5	6'-10"	—
h1(E)	12	#5	7'-0"	—
p(E)	10	#7	20'-11"	—
s3(E)	22	#5	9'-5"	□
u(E)	6	#6	11'-1"	—
v(E)	66	#5	3'-0"	—
v1(E)	12	#5	7'-4"	—

Item	Unit	Quantity
Porous Granular Embankment, Special	Cu Yd	11
Structure Excavation	Cu Yd	40
Concrete Structures	Cu Yd	6.5
Reinforcement Bars, Epoxy Coated	Pound	1220
Furnishing Steel Piles HP10x42	Foot	30
Driving Piles	Foot	30
Geocomposite Wall Drain	Sq Yd	10
Pipe Underdrains For Structures 4"	Foot	45

Welded Wire Fabric 6x6-W4.0xW4.0 weighing 58#/100 sq. ft. The cost of excavation, Class SI Concrete Encasement and reinforcement is included with "Furnishing Piles". Form for encasement may be omitted when soil conditions will permit.

NOTES:

- 1) Work this sheet with Sheet B2.
- 2) Reinforcement bars designated (E) shall be epoxy coated.
- 3) E.E. denotes Each End, E.F. denotes Each Face & F.F. denotes Front Face.
- 4) Order v1(E) bars full length. Cut according to Bar Cutting Diagram. Use remainder of v1(E) bars in opposite face of wingwall.
- 5) See B10 for Rustication Finish details.

