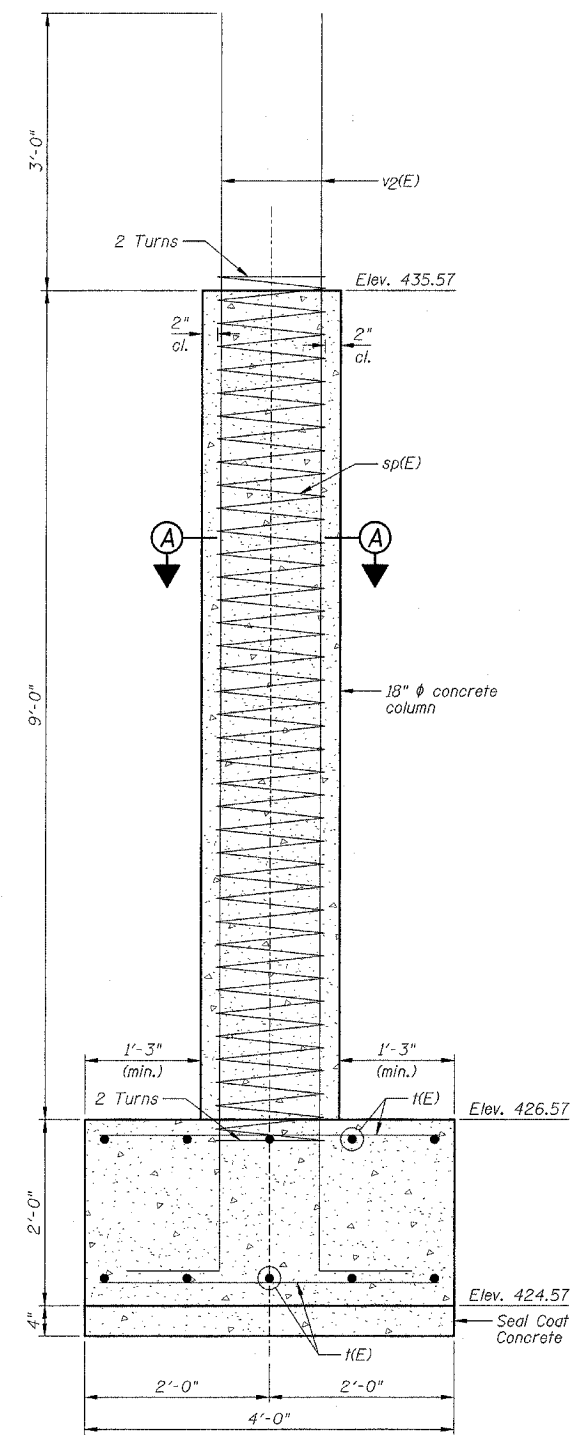


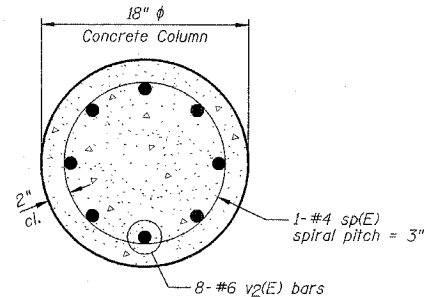
STATE OF ILLINOIS
DEPARTMENT OF TRANSPORTATION

F.A. RTE.	SECTION	COUNTY	TOTAL SHEETS	SHEET NO.
		POPE	60	35
STA.		TO STA.		
FED. ROAD DIST. NO.		ILLINOIS FED. AID PROJECT		

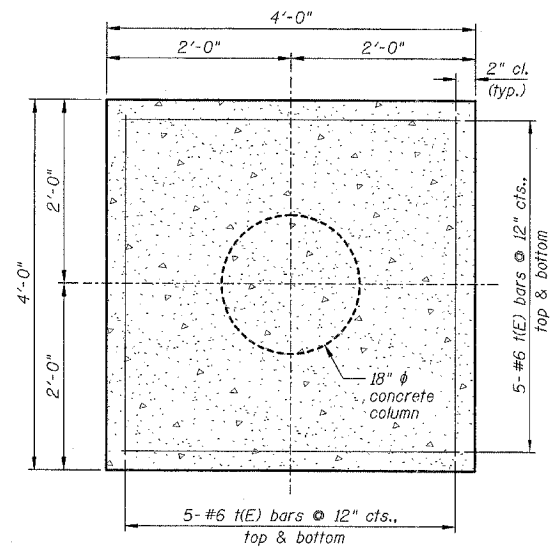
SHEET NO. B9
OF 11 SHEETS



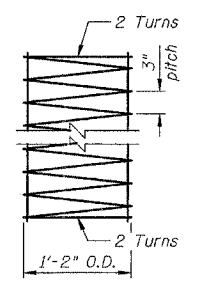
ELEVATION - PIER COLUMN



SECTION A-A

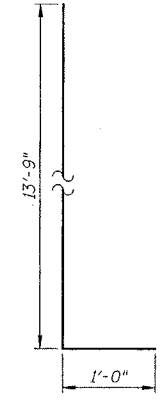


PLAN - COLUMN FOOTING



*sp(E) BAR

*Provide 4-#4 spacers or spacers mounted with clip angles or equivalent. Bar length based on 1 continuous length. Laps and turns not included in the length, but are to be added at no additional cost.



v2(E) BAR

PIER
BILL OF MATERIAL

Bar	No.	Size	Length	Shape
sp(E)	2	#4	150'-0"	⊘
f(E)	40	#6	3'-8"	—
v2(E)	16	#6	14'-9"	—
Item	Unit	Quantity		
Rock Excavation for Structures	Cu Yd	5		
Structure Excavation	Cu Yd	22		
Concrete Structures	Cu Yd	3.6		
Seal Coat Concrete	Cu Yd	0.4		
Reinforcement Bars, Epoxy Coated	Pound	770		

NOTES:

- 1.) Work this sheet with Sheet B2.
- 2.) Reinforcement bars designated (E) shall be epoxy coated.
- 3.) Calculated Maximum Soil Pressure = 7400 psf.
- 4.) v2(E) bars may be mechanically spliced at Contractor's option, no additional compensation allowed.

REVISIONS	
NAME	DATE
DJM	4/02/07

ILLINOIS DEPARTMENT OF TRANSPORTATION
PIER
DIXON SPRINGS STATE PARK
ROAD OVER HILLS BRANCH
POPE COUNTY
STRUCTURE NO. 076-9924
DESIGNED BY: MJG
DRAWN BY: DJM
DATE: 11/30/06
CHECKED BY: MSW