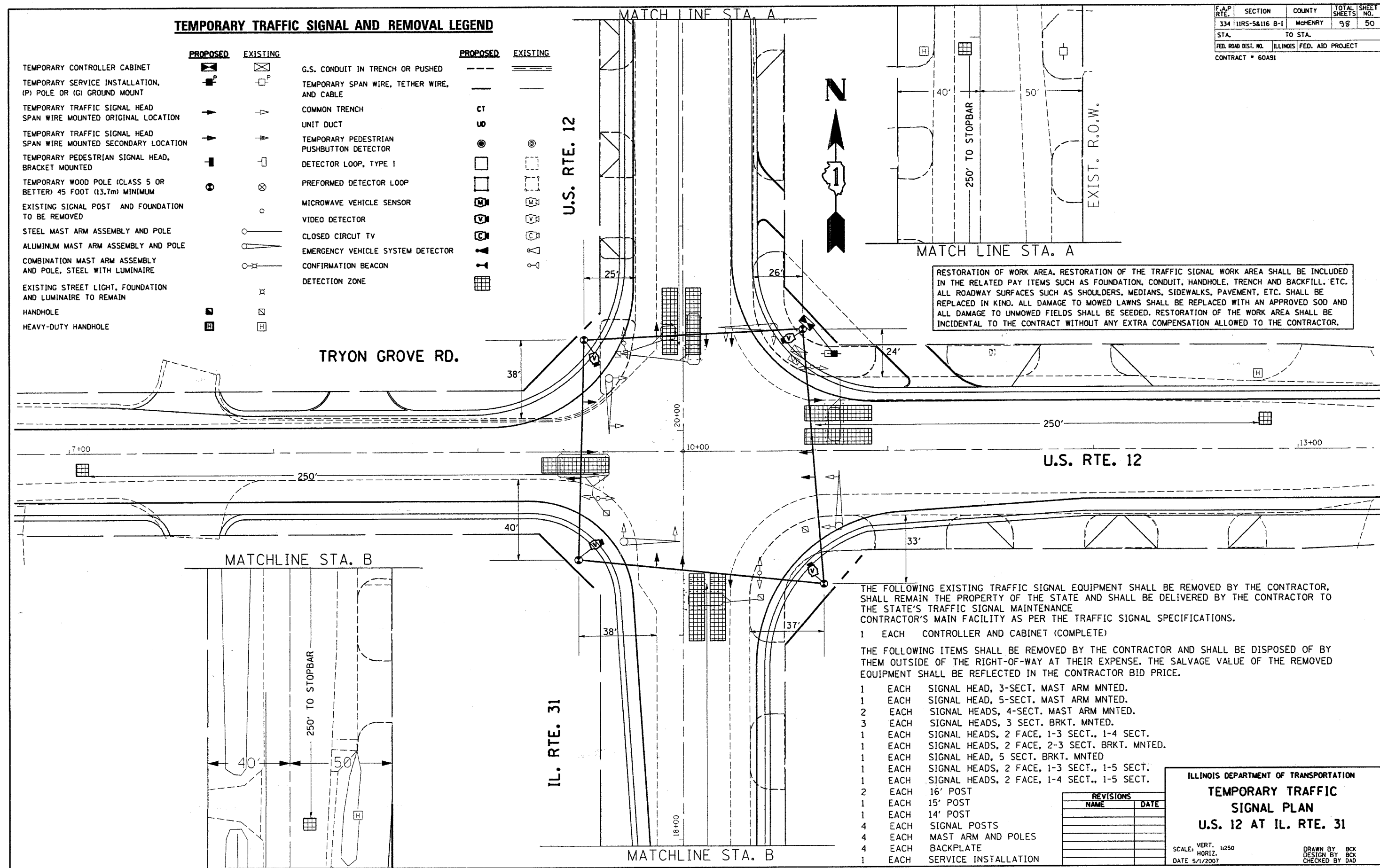


TEMPORARY TRAFFIC SIGNAL AND REMOVAL LEGEND

	PROPOSED	EXISTING		PROPOSED	EXISTING
TEMPORARY CONTROLLER CABINET			G.S. CONDUIT IN TRENCH OR PUSHED		
TEMPORARY SERVICE INSTALLATION, (P) POLE OR (G) GROUND MOUNT			TEMPORARY SPAN WIRE, TETHER WIRE, AND CABLE		
TEMPORARY TRAFFIC SIGNAL HEAD SPAN WIRE MOUNTED ORIGINAL LOCATION			COMMON TRENCH		
TEMPORARY TRAFFIC SIGNAL HEAD SPAN WIRE MOUNTED SECONDARY LOCATION			UNIT DUCT		
TEMPORARY PEDESTRIAN SIGNAL HEAD, BRACKET MOUNTED			TEMPORARY PEDESTRIAN PUSHBUTTON DETECTOR		
TEMPORARY WOOD POLE (CLASS 5 OR BETTER) 45 FOOT (13.7m) MINIMUM			DETECTOR LOOP, TYPE I		
EXISTING SIGNAL POST AND FOUNDATION TO BE REMOVED			PREFORMED DETECTOR LOOP		
STEEL MAST ARM ASSEMBLY AND POLE			MICROWAVE VEHICLE SENSOR		
ALUMINUM MAST ARM ASSEMBLY AND POLE			VIDEO DETECTOR		
COMBINATION MAST ARM ASSEMBLY AND POLE, STEEL WITH LUMINAIRE			CLOSED CIRCUIT TV		
EXISTING STREET LIGHT, FOUNDATION AND LUMINAIRE TO REMAIN			EMERGENCY VEHICLE SYSTEM DETECTOR		
HANDHOLE			CONFIRMATION BEACON		
HEAVY-DUTY HANDHOLE			DETECTION ZONE		

F.A.P. RTE.	SECTION	COUNTY	TOTAL SHEETS	SHEET NO.
334	11RS-5&116 B-1	McHENRY	98	50
STA.		TO STA.		
FED. ROAD DIST. NO.		ILLINOIS	FED. AID PROJECT	
CONTRACT # 60A91				



RESTORATION OF WORK AREA. RESTORATION OF THE TRAFFIC SIGNAL WORK AREA SHALL BE INCLUDED IN THE RELATED PAY ITEMS SUCH AS FOUNDATION, CONDUIT, HANDHOLE, TRENCH AND BACKFILL, ETC. ALL ROADWAY SURFACES SUCH AS SHOULDERS, MEDIANS, SIDEWALKS, PAVEMENT, ETC. SHALL BE REPLACED IN KIND. ALL DAMAGE TO MOWED LAWNS SHALL BE REPLACED WITH AN APPROVED SOD AND ALL DAMAGE TO UNMOWED FIELDS SHALL BE SEED. RESTORATION OF THE WORK AREA SHALL BE INCIDENTAL TO THE CONTRACT WITHOUT ANY EXTRA COMPENSATION ALLOWED TO THE CONTRACTOR.

THE FOLLOWING EXISTING TRAFFIC SIGNAL EQUIPMENT SHALL BE REMOVED BY THE CONTRACTOR, SHALL REMAIN THE PROPERTY OF THE STATE AND SHALL BE DELIVERED BY THE CONTRACTOR TO THE STATE'S TRAFFIC SIGNAL MAINTENANCE CONTRACTOR'S MAIN FACILITY AS PER THE TRAFFIC SIGNAL SPECIFICATIONS.

- 1 EACH CONTROLLER AND CABINET (COMPLETE)
- THE FOLLOWING ITEMS SHALL BE REMOVED BY THE CONTRACTOR AND SHALL BE DISPOSED OF BY THEM OUTSIDE OF THE RIGHT-OF-WAY AT THEIR EXPENSE. THE SALVAGE VALUE OF THE REMOVED EQUIPMENT SHALL BE REFLECTED IN THE CONTRACTOR BID PRICE.
- 1 EACH SIGNAL HEAD, 3-SECT. MAST ARM MNTD.
- 1 EACH SIGNAL HEAD, 5-SECT. MAST ARM MNTD.
- 2 EACH SIGNAL HEADS, 4-SECT. MAST ARM MNTD.
- 3 EACH SIGNAL HEADS, 3 SECT. BRKT. MNTD.
- 1 EACH SIGNAL HEADS, 2 FACE, 1-3 SECT., 1-4 SECT.
- 1 EACH SIGNAL HEADS, 2 FACE, 2-3 SECT. BRKT. MNTD.
- 1 EACH SIGNAL HEAD, 5 SECT. BRKT. MNTD
- 1 EACH SIGNAL HEADS, 2 FACE, 1-3 SECT., 1-5 SECT.
- 1 EACH SIGNAL HEADS, 2 FACE, 1-4 SECT., 1-5 SECT.
- 2 EACH 16' POST
- 1 EACH 15' POST
- 1 EACH 14' POST
- 4 EACH SIGNAL POSTS
- 4 EACH MAST ARM AND POLES
- 4 EACH BACKPLATE
- 1 EACH SERVICE INSTALLATION

REVISIONS	
NAME	DATE

ILLINOIS DEPARTMENT OF TRANSPORTATION
TEMPORARY TRAFFIC SIGNAL PLAN
U.S. 12 AT IL. RTE. 31

SCALE: VERT. 1:250
 HORIZ. 1:250
 DATE 5/1/2007

DRAWN BY BCK
 DESIGN BY BCK
 CHECKED BY DAD