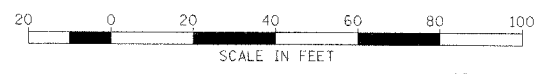
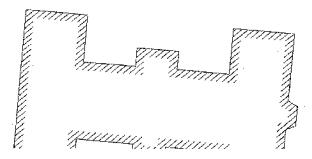
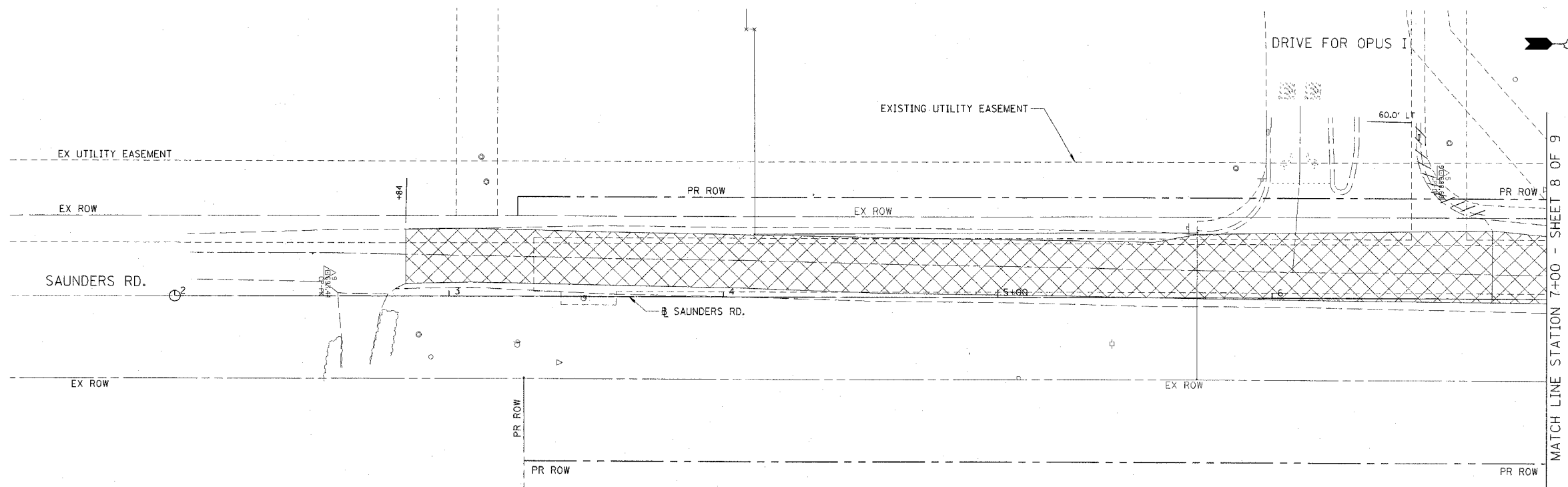


F.A.P. RTE.	SECTION	COUNTY	TOTAL SHEETS	SHEET NO.
335	119R-2	LAKE	439	52
STA. 432+83.12		TO STA. 470+56.84		
FED. ROAD DIST. NO.		ILLINOIS FED. AID PROJECT		

60B01

ANL\at\p\proj\03192\CIV\NO.3192_SAUDERS\FILEM



- LEGEND:
- CONC CURB & GUTTER REMOVAL
 - PAVEMENT REMOVAL
 - ISLAND REMOVAL
 - RELOCATE EXISTING ROADSIDE FEATURE
 - TREE REMOVAL
 - REMOVAL

CB CHRISTOPHER B. BURKE ENGINEERING LTD.
 1675 West Higgins Road, Suite 600
 Rosemont, Illinois 60018
 (630) 823-6900

REVISIONS	
NAME	DATE

ILLINOIS DEPARTMENT OF TRANSPORTATION
 ILLINOIS RTE 60 OVER I-94
 SAUNDERS ROAD
 EXISTING CONDITIONS AND REMOVAL
 STA. 2+00.00 TO STA. 7+00.00
 SHEET 7 OF 9

SCALE: 1"=20'
 DATE: MAY 8, 2007

DRAWN BY: GT
 CHECKED BY: MCW

5/2/2007 9:33:05 AM