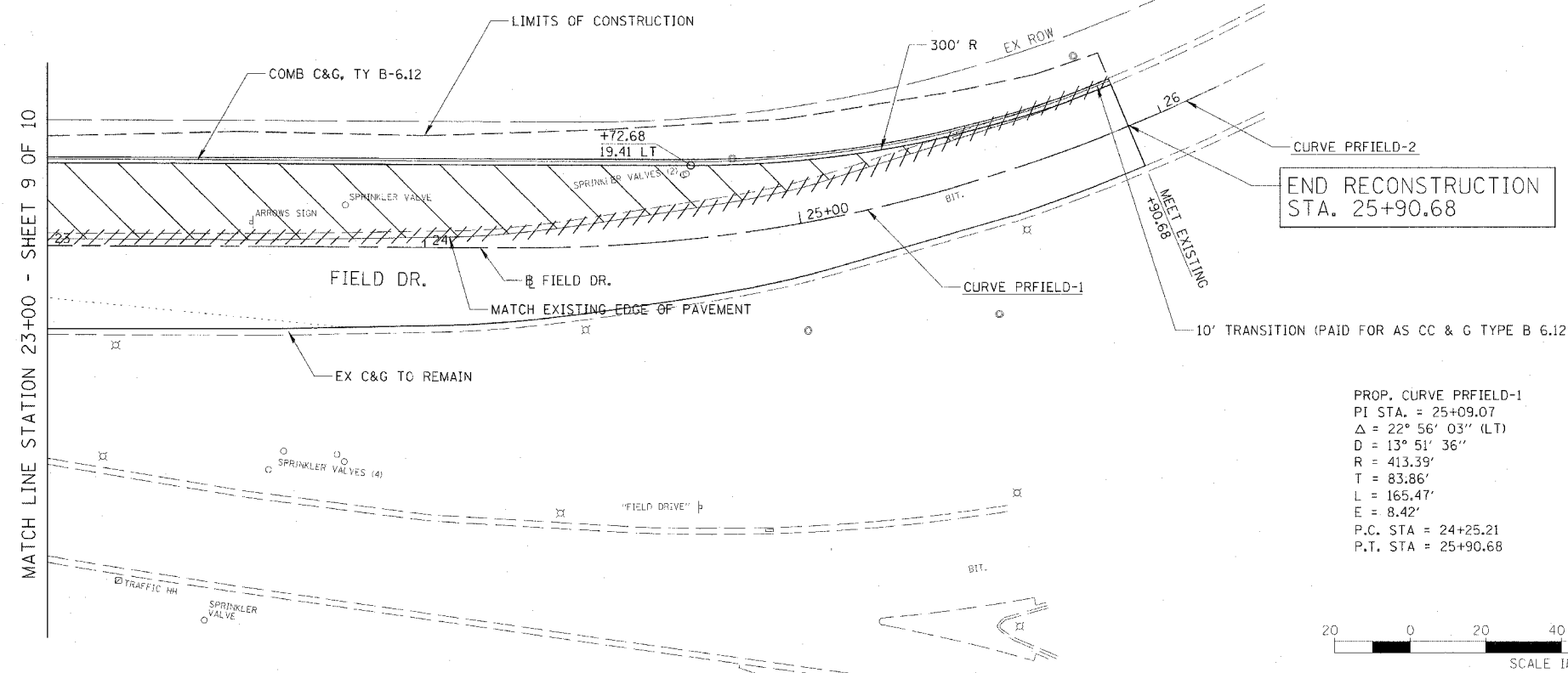
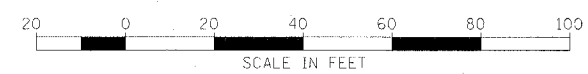


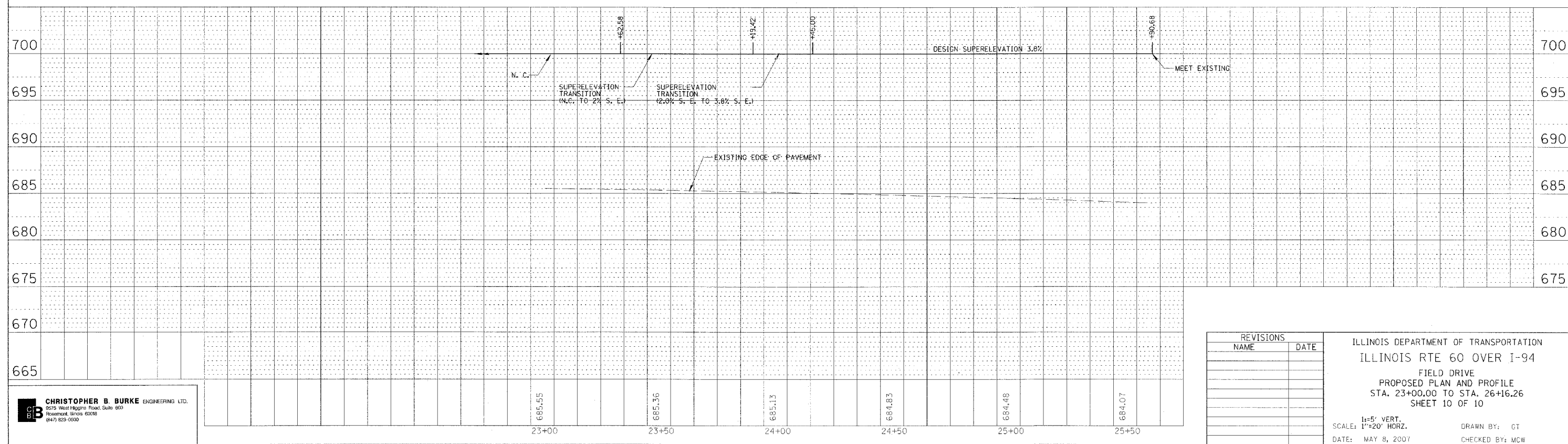
F.A.P. RTE.	SECTION	COUNTY	TOTAL SHEETS	SHEET NO.
335	119R-2	LAKE	439	64
STA. 432+83.12		TO STA. 470+56.84		
FED. ROAD DIST. NO.	ILLINOIS	FED. AID PROJECT		



<b>PROP. CURVE PRFIELD-1</b> PI STA. = 25+09.07 $\Delta = 22^\circ 56' 03''$ (LT) $D = 13^\circ 51' 36''$ $R = 413.39'$ $T = 83.86'$ $L = 165.47'$ $E = 8.42'$ P.C. STA = 24+25.21 P.T. STA = 25+90.68	<b>PROP. CURVE PRFIELD-2</b> PI STA. = 26+03.47 $\Delta = 2^\circ 44' 54''$ (LT) $D = 10^\circ 44' 49''$ $R = 533.13'$ $T = 12.79'$ $L = 25.57'$ $E = 0.15'$ P.C. STA = 25+90.68 P.T. STA = 26+16.26
---	---



- LEGEND:**
- PROPOSED PCC PAVEMENT, 10 1/4" (JOINTED)
  - PROPOSED HMA PAVEMENT, FULL DEPTH (PAID AS HMA SURFACE & BINDER COURSES - SEE PROPOSED TYPICAL SECTION SHEET 5 OF 5)



REVISIONS	
NAME	DATE

ILLINOIS DEPARTMENT OF TRANSPORTATION  
 ILLINOIS RTE 60 OVER I-94  
 FIELD DRIVE  
 PROPOSED PLAN AND PROFILE  
 STA. 23+00.00 TO STA. 26+16.26  
 SHEET 10 OF 10

SCALE: 1"=20' HORIZ.  
 DATE: MAY 8, 2007

DRAWN BY: GT  
 CHECKED BY: MCW

**CB** CHRISTOPHER B. BURKE ENGINEERING LTD.  
 9575 West Higgins Road, Suite 600  
 Rosemont, Illinois 60018  
 (847) 823-0500

DATE	
BY	
PLAN	
NO. OF SHEETS	
NO. OF PAGES	
NO. OF FIGS.	
NO. OF TITLES	
NO. OF PLANS	
NO. OF PROFILES	
NO. OF SECTIONS	
NO. OF DETAILS	
NO. OF NOTES	
NO. OF REFERENCES	
NO. OF APPENDICES	
NO. OF INDEXES	
NO. OF COPIES	
NO. OF ORIGINALS	
NO. OF REVISIONS	
NO. OF CORRECTIONS	
NO. OF AMENDMENTS	
NO. OF SUPPLEMENTS	
NO. OF ADDENDUMS	
NO. OF EXHIBITS	
NO. OF REFERENCES	
NO. OF APPENDICES	
NO. OF INDEXES	
NO. OF COPIES	
NO. OF ORIGINALS	
NO. OF REVISIONS	
NO. OF CORRECTIONS	
NO. OF AMENDMENTS	
NO. OF SUPPLEMENTS	
NO. OF ADDENDUMS	
NO. OF EXHIBITS	

DATE	
BY	
PROFILE	
NO. OF SHEETS	
NO. OF PAGES	
NO. OF FIGS.	
NO. OF TITLES	
NO. OF PLANS	
NO. OF PROFILES	
NO. OF SECTIONS	
NO. OF DETAILS	
NO. OF NOTES	
NO. OF REFERENCES	
NO. OF APPENDICES	
NO. OF INDEXES	
NO. OF COPIES	
NO. OF ORIGINALS	
NO. OF REVISIONS	
NO. OF CORRECTIONS	
NO. OF AMENDMENTS	
NO. OF SUPPLEMENTS	
NO. OF ADDENDUMS	
NO. OF EXHIBITS	

ILLINOIS DEPARTMENT OF TRANSPORTATION  
 ILLINOIS RTE 60 OVER I-94  
 FIELD DRIVE  
 PROPOSED PLAN AND PROFILE  
 STA. 23+00.00 TO STA. 26+16.26  
 SHEET 10 OF 10  
 DATE: MAY 8, 2007  
 DRAWN BY: GT  
 CHECKED BY: MCW  
 5/8/2007 8:25:12 AM