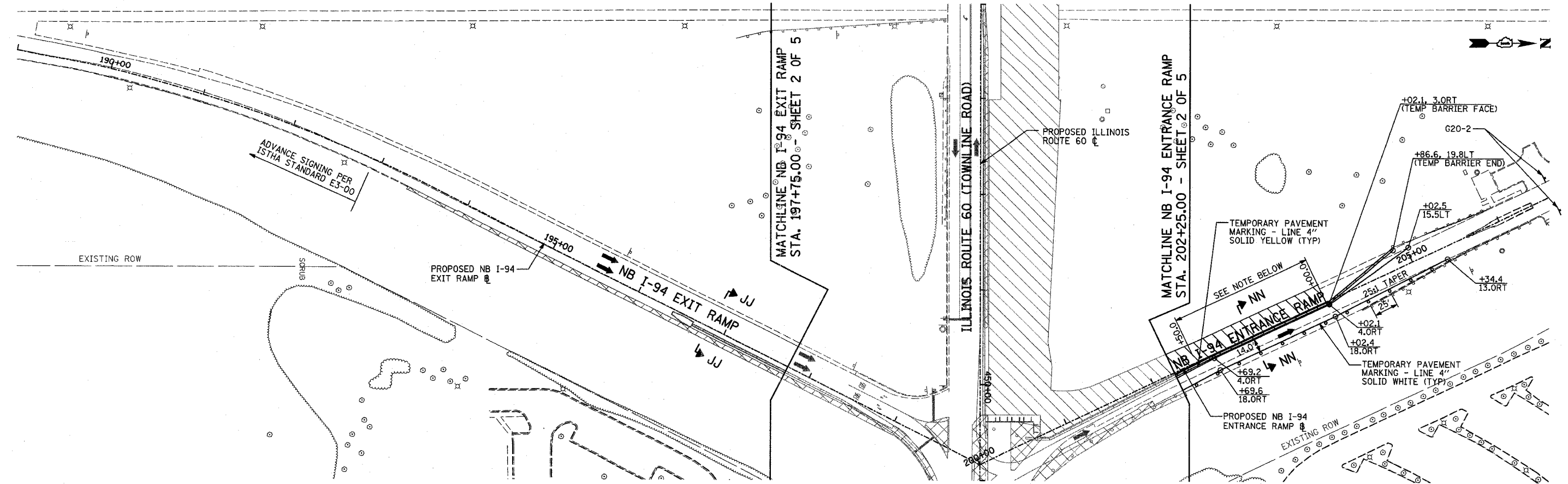


F.A.P. RTE.	SECTION	COUNTY	TOTAL SHEETS	SHEET NO.
335	119R-2	LAKE	439	97
STA. 432+83.12		TO STA. 470+56.84		
FED. ROAD DIST. NO.		ILLINOIS FED. AID PROJECT		

60B01

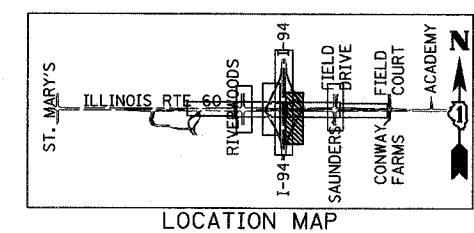
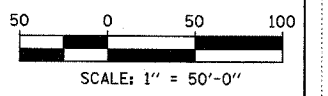


LEGEND:

- CONSTRUCTION ZONE
- TEMPORARY PAVEMENT
- TRAFFIC MOVEMENT
- TEMPORARY SIGN (SEE M.O.T. SIGNING LEGEND)
- TYPE II BARRICADES OR DRUMS W/ MONO-DIRECTIONAL STEADY BURNING LIGHT
- TYPE III BARRICADE W/2 FLASHING BIDIRECTIONAL LIGHTS
- TEMPORARY CONCRETE BARRIER
- ARROW BOARD
- M.O.T. APPURTENANCES REMAINING FROM PREVIOUS STAGES

NOTE:

PLACE HMA SURFACE COURSE, MIX "D" N70 AS NECESSARY OVER THE EXISTING PAVEMENT SURFACE TO MATCH THE PROPOSED ELEVATION TO THE EXISTING.



REVISIONS	
NAME	DATE

ILLINOIS DEPARTMENT OF TRANSPORTATION
 ILLINOIS RTE 60 OVER I-94
 MAINTENANCE OF TRAFFIC PLAN
 NORTHBOUND INTERSTATE 94 RAMPS
 STAGE 1 - SHEET 5 OF 5

SCALE: 1"=50'-0"
 DATE: MAY 8, 2007

DRAWN BY: MPG, CBS
 CHECKED BY: JDF

TYLIN INTERNATIONAL

P:\60245811\601\road\60mat_#1105.dwg 05/02/2007 10:26:44 AM