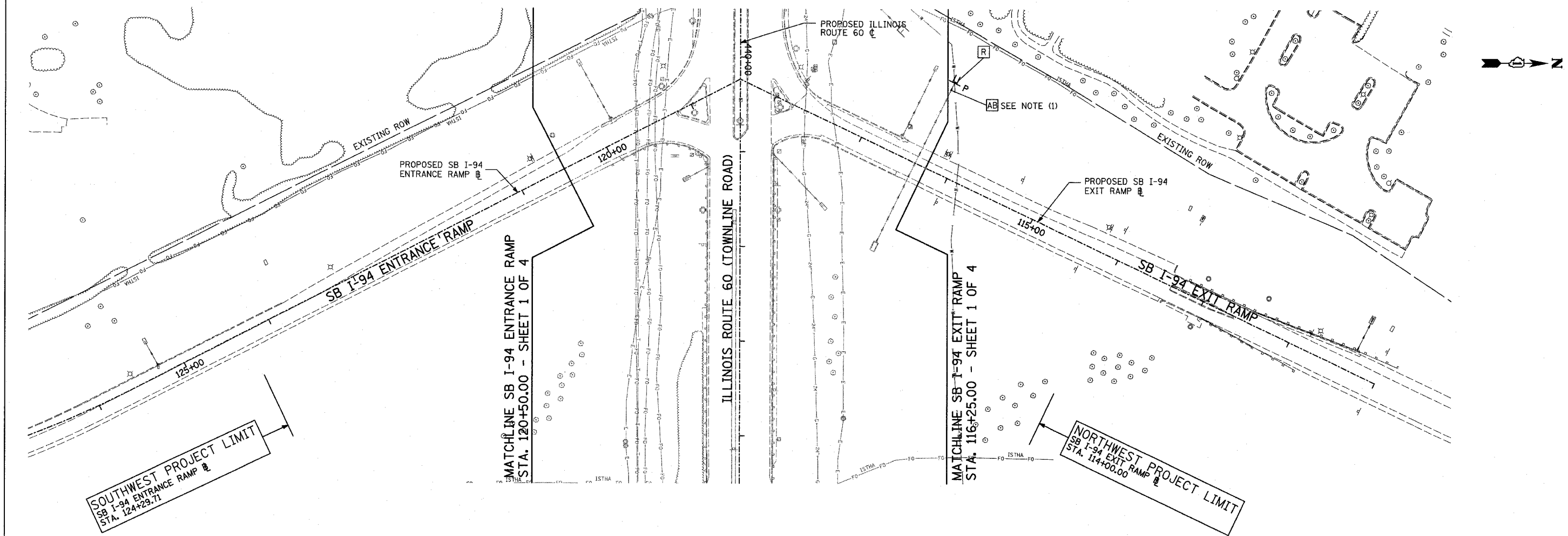


F.A.P. RTE.	SECTION	COUNTY	TOTAL SHEETS	SHEET NO.
335	119R-2	LAKE	439	140
STA. 432+83.12		TO STA. 470+56.84		
FED. ROAD DIST. NO.		ILLINOIS FED. AID PROJECT		

60B01



**SOUTHWEST PROJECT LIMIT**  
SB I-94 ENTRANCE RAMP  
STA. 124+29.71

**MATCHLINE SB I-94 ENTRANCE RAMP**  
STA. 120+50.00 - SHEET 1 OF 4

**ILLINOIS ROUTE 60 (TOWNLINER ROAD)**

**MATCHLINE SB I-94 EXIT RAMP**  
STA. 116+25.00 - SHEET 1 OF 4

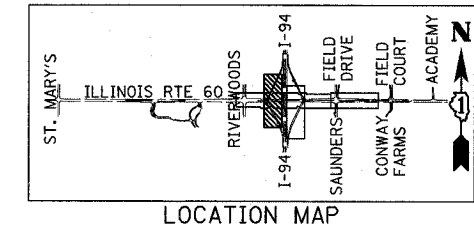
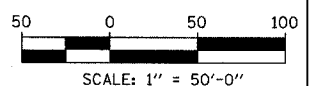
**NORTHWEST PROJECT LIMIT**  
SB I-94 EXIT RAMP  
STA. 114+00.00

**LEGEND:**

- P SEWER PLUG
- F.V. FIELD VERIFY
- ////// STORM SEWER REMOVAL
- END SECTION

**NOTES:**

1. ABANDONED SEWER TO BE FILLED WITH CONTROLLED LOW STRENGTH MATERIAL. SEE SCHEDULE FOR DETAILS.



LOCATION MAP

REVISIONS	
NAME	DATE

ILLINOIS DEPARTMENT OF TRANSPORTATION  
ILLINOIS RTE 60 OVER I-94  
EXISTING UTILITIES AND  
DRAINAGE REMOVAL PLAN  
SOUTHBOUND INTERSTATE 94 RAMPS  
SHEET 3 OF 4

SCALE: 1"=50'-0"  
DATE: MAY 8, 2007

DRAWN BY: NSB  
CHECKED BY: DA

TYLIN INTERNATIONAL

05/08/2007 07:36:30 AM