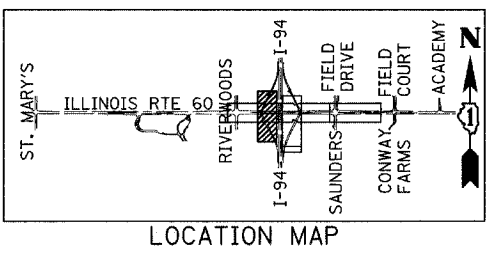


F.A.P. RTE.	SECTION	COUNTY	TOTAL SHEETS	SHEET NO.
335	119R-2	LAKE	439	145
STA. 432+83.12		TO STA. 470+56.84		
FED. ROAD DIST. NO.		ILLINOIS FED. AID PROJECT		

60B01



LOCATION MAP

SEE SHEET "DRAINAGE DETAILS SHEET 3 OF 4," (TYP.)

SOUTHWEST PROJECT LIMIT
SB I-94 ENTRANCE RAMP
STA. 124+29.71

PROPOSED SB I-94 ENTRANCE RAMP

SB I-94 ENTRANCE RAMP

**MATCHLINE SB I-94 ENTRANCE RAMP
STA. 121+00.00 - SHEET 1 OF 10**

ILLINOIS ROUTE 60 (TOWNLINE ROAD)

**MATCHLINE SB I-94 EXIT RAMP
STA. 115+95.00 - SHEET 1 OF 10**

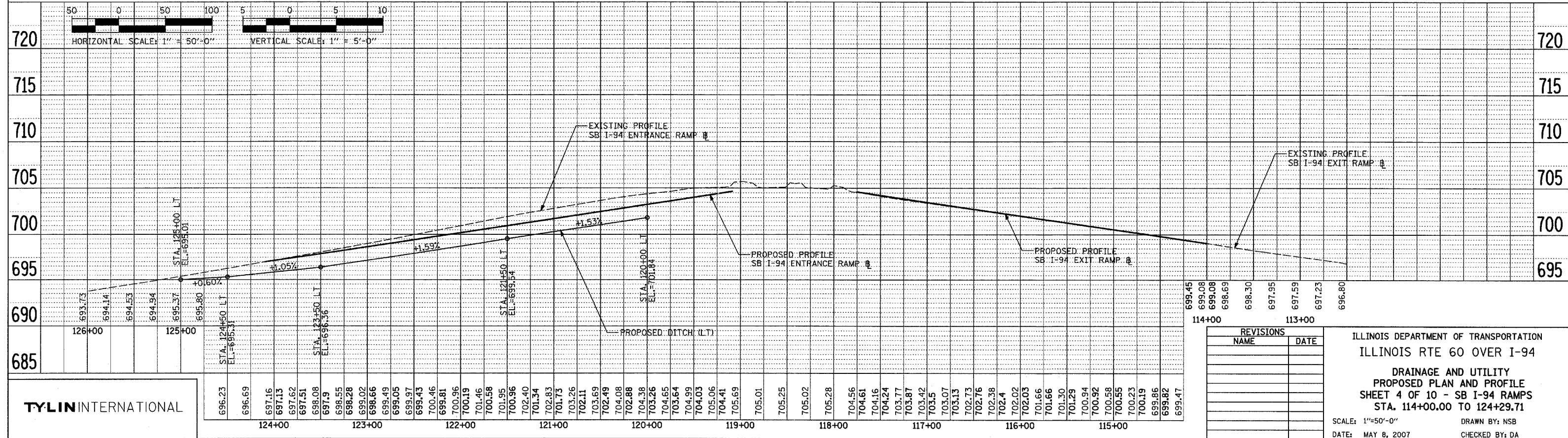
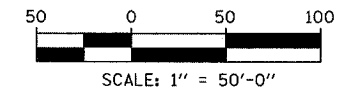
SB I-94 EXIT RAMP

NORTHWEST PROJECT LIMIT
SB I-94 EXIT RAMP
STA. 114+00.00

- LEGEND:**
- (XY) PROPOSED STORM SEWER NUMBER (X=SHEET NO., Y=PIPE NO.)
 - (XY) PROPOSED STRUCTURE NUMBER (X=SHEET NO., Y=STRUCTURE NO.)
 - SHEET FLOW

NOTES:

1. ALL PROPOSED DITCHES AND SWALES SHALL BE SEEDDED USING NATIVE VEGETATION SUCH AS IDOT CLASS 4A, 4B OR 5A SEEDING MIXTURES UNLESS NOTED OTHERWISE.
2. ALL ITEMS SHOWN ON THIS SHEET ARE ISTHA PAY ITEMS.
3. FOR CLARITY, PIPE UNDERDRAINS ARE SHOWN OFFSET FROM THEIR PROPOSED LOCATIONS. SEE PROPOSED TYPICAL SECTIONS FOR PROPOSED PUD LOCATIONS. FOR DETAILED PLACEMENT, SEE ILLINOIS TOLLWAY STANDARD B12-00, PIPE UNDERDRAINS (FILTER FABRIC) AND SLOTTED PAVEMENT DRAIN.
4. ALL SLOPED PIPE DRAINS SHALL BE AS PER DETAIL SHOWN ON SHEET 4 OF 4 OF DRAINAGE DETAILS. THE COST OF CONCRETE THRUST BLOCKS AND PIPE BENDS SHALL BE INCLUDED IN SEWER INSTALLATION COST.



TYLIN INTERNATIONAL

REVISIONS	
NAME	DATE

ILLINOIS DEPARTMENT OF TRANSPORTATION
ILLINOIS RTE 60 OVER I-94
DRAINAGE AND UTILITY
PROPOSED PLAN AND PROFILE
SHEET 4 OF 10 - SB I-94 RAMPS
STA. 114+00.00 TO 124+29.71
SCALE: 1"=50'-0"
DATE: MAY 8, 2007
DRAWN BY: NSB
CHECKED BY: DA