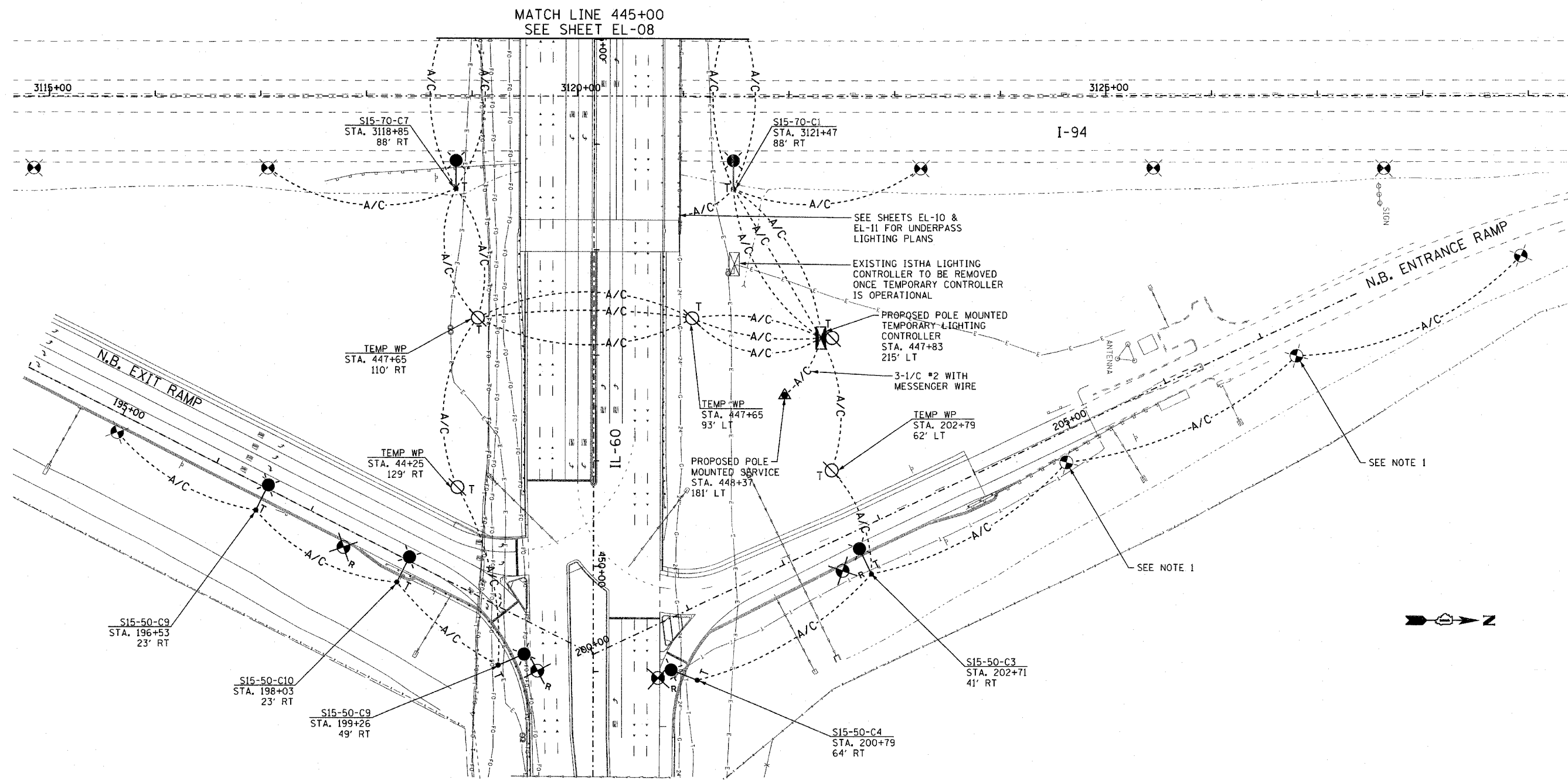


F.A.P. RTE.	SECTION	COUNTY	TOTAL SHEETS	SHEET NO.
335	119R-2	LAKE	439	243
STA.	445+00	TO STA.	452+00	
FED. ROAD DIST. NO.	ILLINOIS	FED. AID PROJECT		

60B01



MATCH LINE 445+00  
SEE SHEET EL-08

SEE SHEETS EL-10 & EL-11 FOR UNDERPASS LIGHTING PLANS

EXISTING ISTHA LIGHTING CONTROLLER TO BE REMOVED ONCE TEMPORARY CONTROLLER IS OPERATIONAL

PROPOSED POLE MOUNTED TEMPORARY LIGHTING CONTROLLER STA. 447+83 215' LT

3-1/2" #2 WITH MESSENGER WIRE

SEE NOTE 1

SEE NOTE 1

NOTES:

1. ATTACH AERIAL CABLE TO LIGHT POLE BUT DO NOT CONNECT AERIAL CABLE TO LIGHT POLE CIRCUITRY. ANY DAMAGE CAUSED BY CONNECTING THIS CIRCUIT WILL BE REPAIRED AT THE CONTRACTOR'S EXPENSE.

**EJM ENGINEERING, INC.**  
411 South Wells Street Suite 800  
Chicago, Illinois 60607

REVISIONS	
NAME	DATE

ILLINOIS DEPARTMENT OF TRANSPORTATION  
ILLINOIS RTE 60 OVER I-94  
TEMPORARY ROADWAY LIGHTING PLAN  
I-94 NORTHBOUND RAMPS

S.N. \_\_\_\_\_ DESIGNED BY: JDM  
SCALE: 1"=50'-0" DRAWN BY: JDM  
DATE: MAY 8, 2007 CHECKED BY: RES