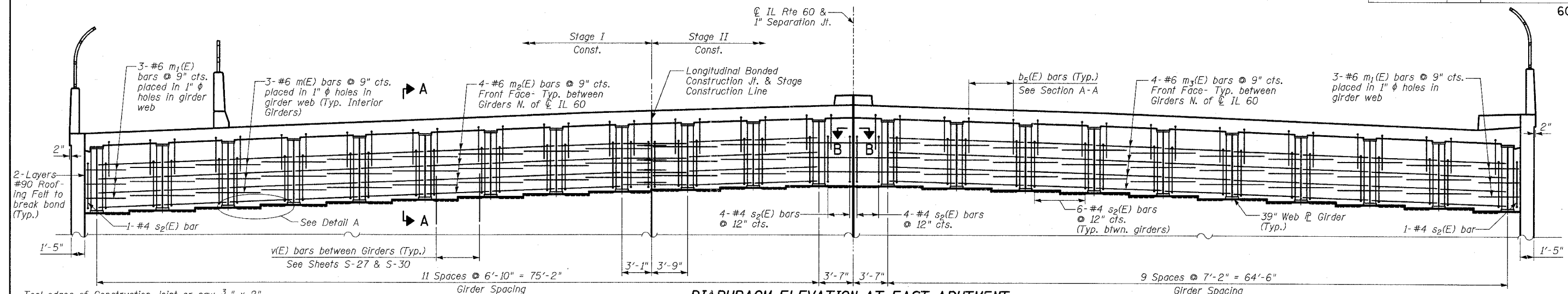


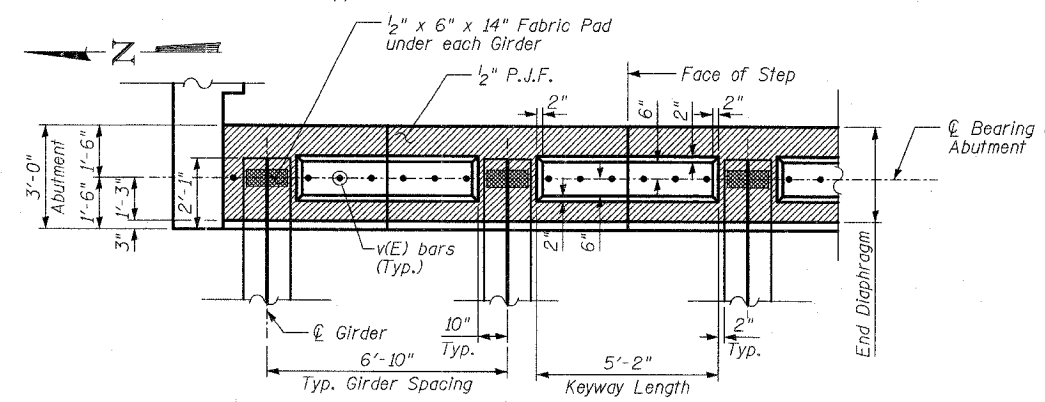
F.A.P. RTE.	SECTION	COUNTY	TOTAL SHEETS	SHEET NO.
335	119R-2	LAKE	439	267
STA. 432+83.12		TO STA. 470+56.84		
FED. ROAD DIST. NO.	ILLINOIS	FED. AID PROJECT		

60B01

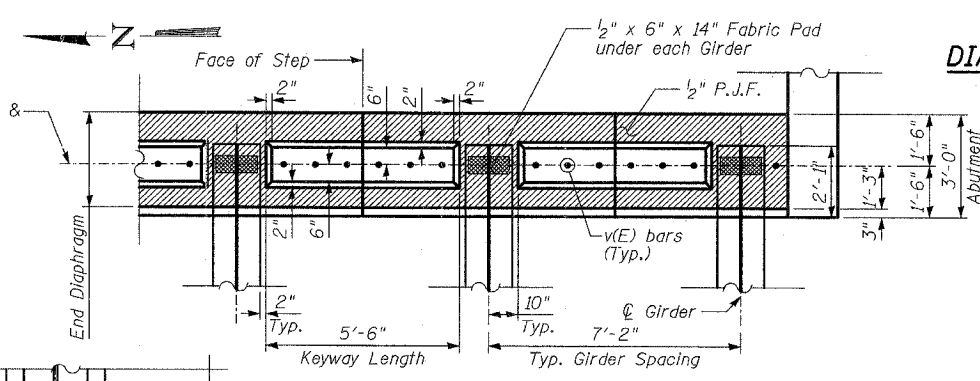


Tool edges of Construction Joint or saw $\frac{3}{8}$ " x 2" and fill with hot poured Low Modulus Polymer Sealant meeting the requirements of ASTM D3405. Cost included with Bridge Approach Pavement (Special).

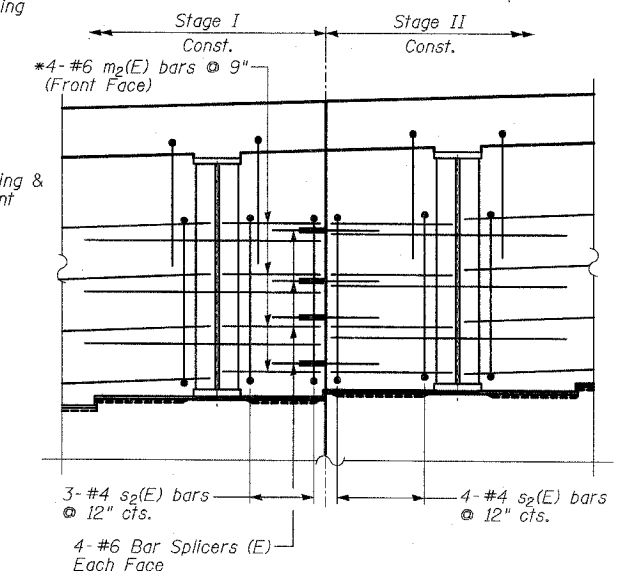
DIAPHRAGM ELEVATION AT EAST ABUTMENT
(West Abutment Opposite Hand)



DIAPHRAGM PLAN AT ABUTMENT
(Typ. North of ϕ IL 60)



DIAPHRAGM PLAN AT ABUTMENT
(Typ. South of ϕ IL 60)

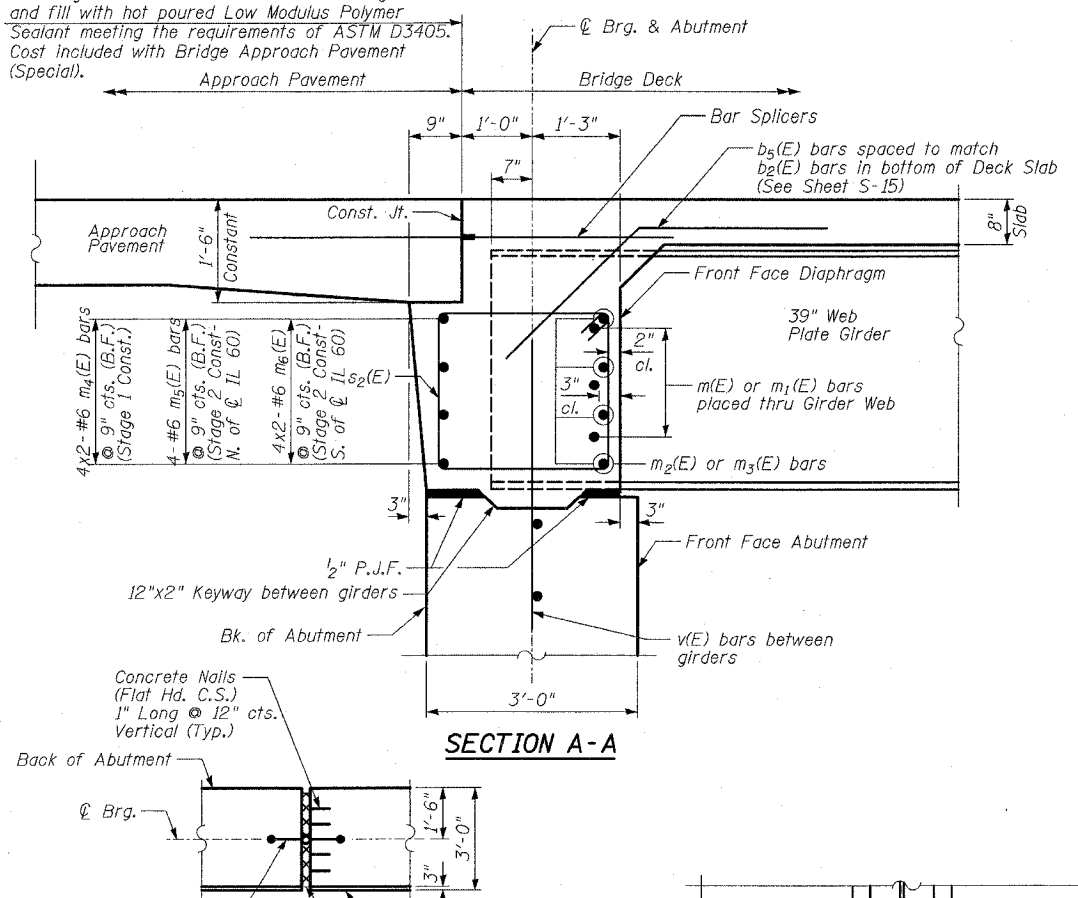


DIAPHRAGM ELEVATION AT STAGE CONSTRUCTION LINE

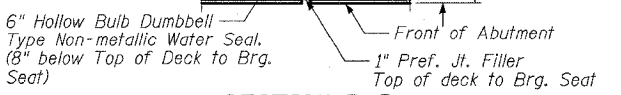
*Order bars $m_2(E)$ full length and cut to fit. Use the remainder in Stage II Construction. Connect using #6 Bar Splicers.

NOTES:

1. Reinforcement bars in Diaphragm are billed with Superstructure on Sheet S-17.
2. Concrete in Diaphragm is included with Concrete Superstructure on Sheet S-17.
3. Bars indicated thus 4x2-#6 etc. indicates 4 lines of bars with 2 lengths per line.

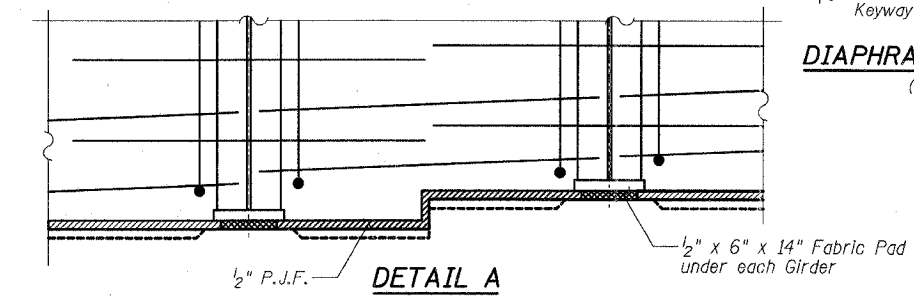


SECTION A-A



SECTION B-B

Cost of Water Seal included in the cost of Concrete Structures.



DETAIL A

MINIMUM BAR LAPS
(Diaphragms)

Bar	Lap
#6	2'-9"

REVISIONS	
NAME	DATE

ILLINOIS DEPARTMENT OF TRANSPORTATION
INTEGRAL ABUT. DIAPHRAGM DETAILS
 ILLINOIS 60 OVER I-94
 F.A.P. RTE. 335 SECTION 119R-2
 LAKE COUNTY STA. 445+54.14
 S.N. 049-2012 ISTHA BRIDGE NO. 407
 DESIGNED BY: DE
 DRAWN BY: DE
 CHECKED BY: SP
 SCALE:
 DATE: MAY 8, 2007

TYLIN INTERNATIONAL

SHEET S-20 OF S-53

PA:60245817-601 Structural/Fin/N/LEGBR/012.DWG 05/03/2007 04:30:31 PM