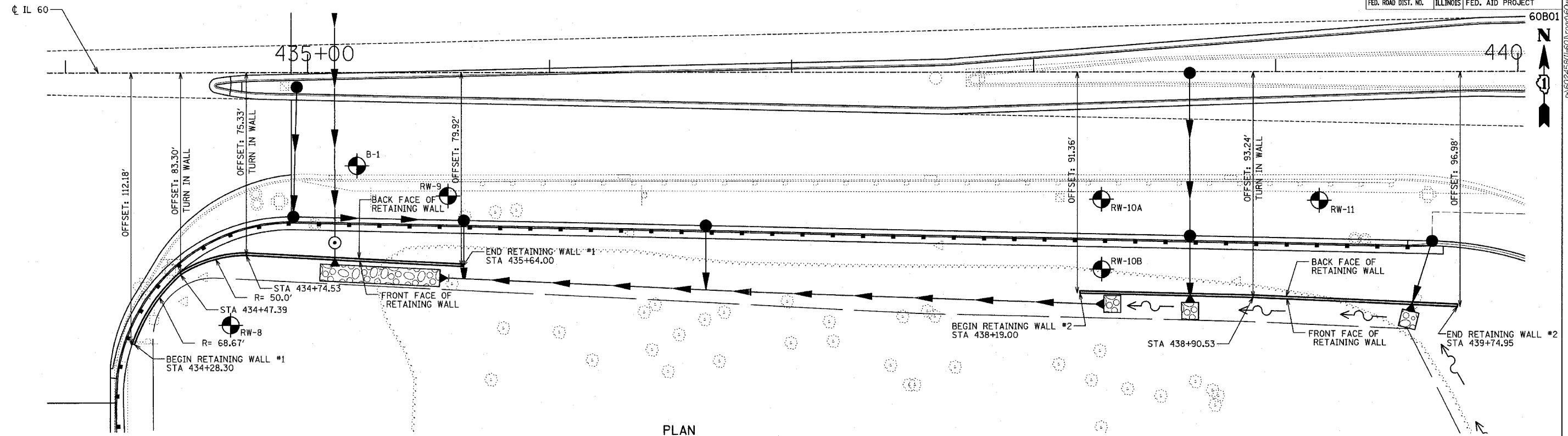
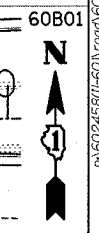
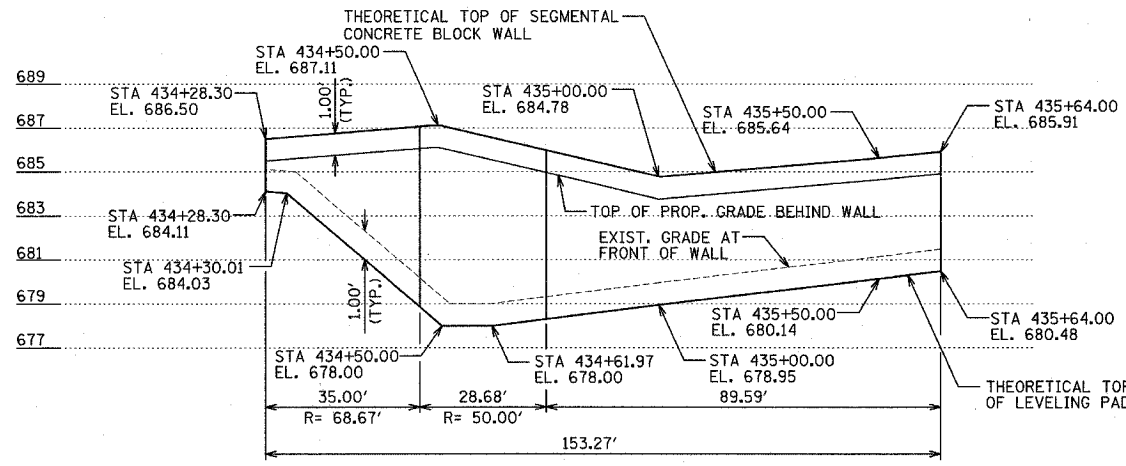


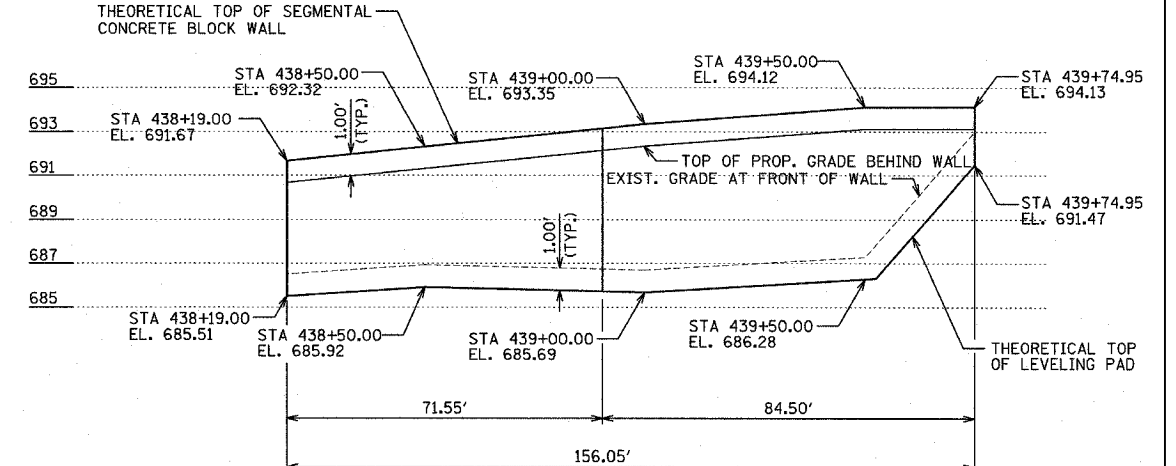
| | | | | |
|---------------------|---------|---------------------------|--------------|-----------|
| F.A.P. RTE. | SECTION | COUNTY | TOTAL SHEETS | SHEET NO. |
| 335 | 119R-2 | LAKE | 439 | 301 |
| STA. 432+83.12 | | TO STA. 470+56.84 | | |
| FED. ROAD DIST. NO. | | ILLINOIS FED. AID PROJECT | | |



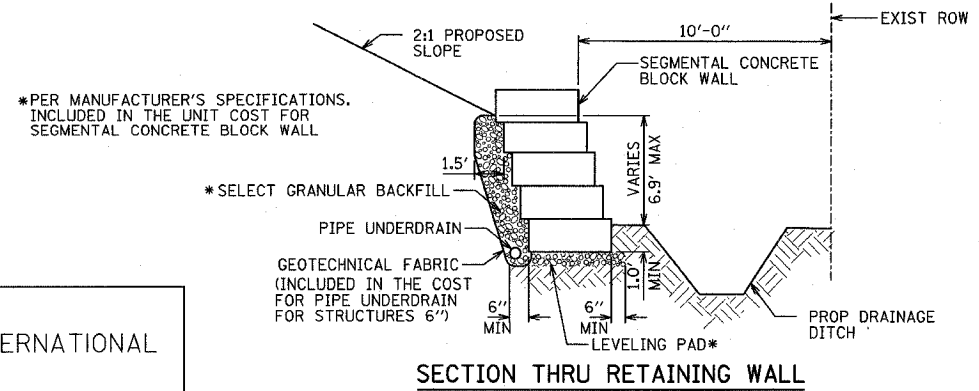
PLAN



ELEVATION WALL #1
SCALED (5:1) (V:H)



ELEVATION WALL #2
SCALED (5:1) (V:H)



SECTION THRU RETAINING WALL

NOTES

- BLOCK SIZE, BATTER, SETBACK & NUMBER OF COURSES PER WALL SUPPLIER DESIGN. SEE SPECIAL PROVISIONS FOR ADDITIONAL REQUIREMENTS.
- OUTLET PIPE UNDERDRAIN TO PROPOSED DRAINAGE DITCH PER WALL SUPPLIER'S DESIGN. COST INCLUDED WITH SEGMENTAL CONCRETE BLOCK WALL.
- WALL SUPPLIER SHALL DETAIL WALL TO ACCOMMODATE OPENINGS FOR DRAINAGE PIPES. FOR DIAMETERS AND INVERTS, SEE DRAINAGE PLANS.

BILL OF MATERIAL

| ITEM | UNIT | TOTAL |
|-----------------------------------|-------|-------|
| STRUCTURE EXCAVATION | CU YD | 62 |
| PIPE UNDERDRAIN FOR STRUCTURES 6" | FOOT | 310 |
| SEGMENTAL CONCRETE BLOCK WALL | SQ FT | 2039 |

| REVISIONS | |
|-----------|------|
| NAME | DATE |
| | |
| | |
| | |
| | |
| | |

ILLINOIS DEPARTMENT OF TRANSPORTATION
ILLINOIS RTE 60 OVER I-94
SEGMENTAL CONCRETE BLOCK WALLS 1 AND 2
FROM STA 434+28.30 TO STA 435+64.00
AND STA 438+19.00 TO STA 439+74.95
SCALE: DATE: MAY 8, 2007
DRAWN BY: DE
CHECKED BY: SP

TYLIN INTERNATIONAL

05/08/2007 08:48:08 AM