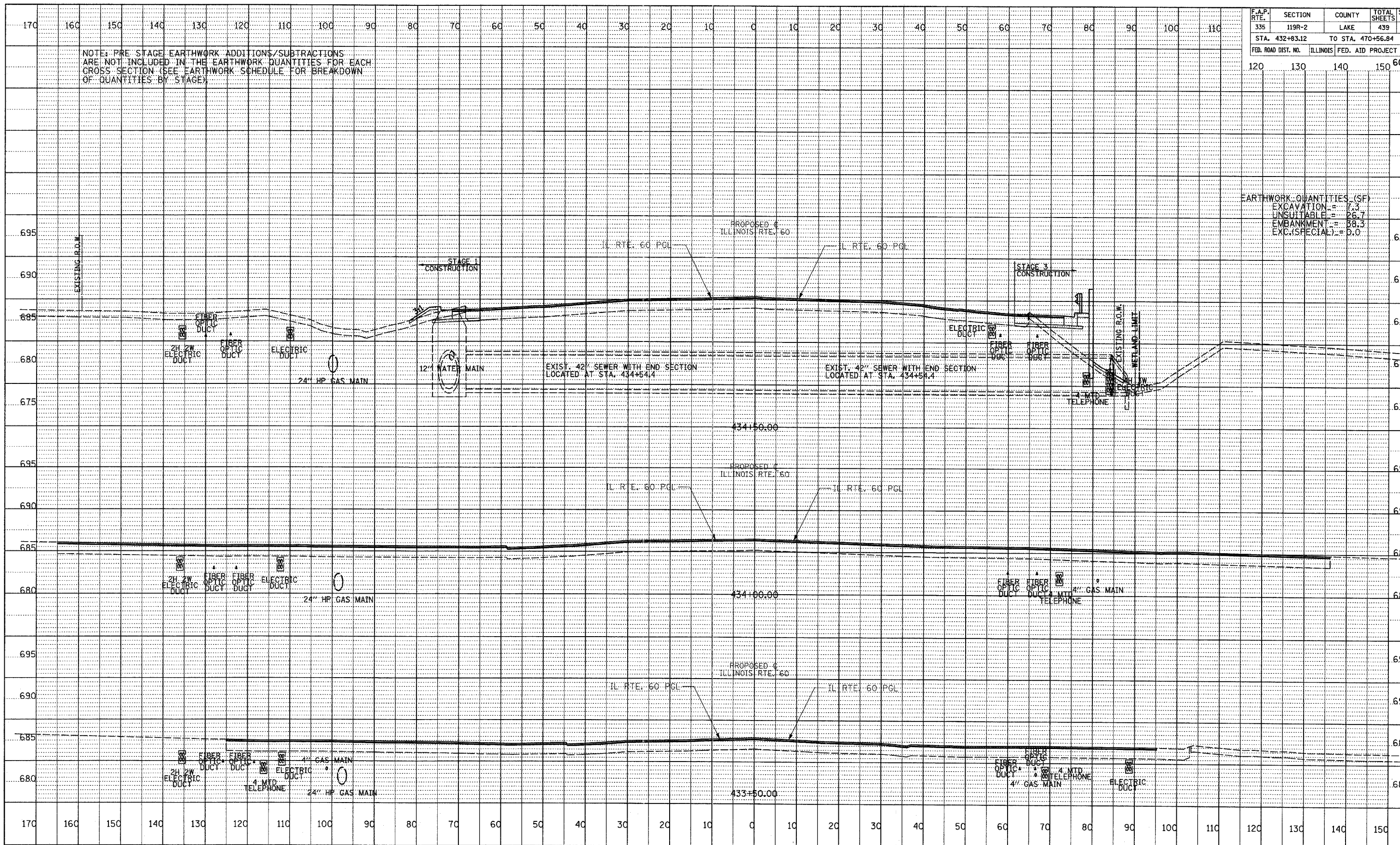


F.A.P. RTE.	SECTION	COUNTY	TOTAL SHEETS	SHEET NO.
335	119R-2	LAKE	439	364
STA. 432+83.12 TO STA. 470+56.84				
FED. ROAD DIST. NO.	ILLINOIS	FED. AID PROJECT		
120	130	140	150	60B01

NOTE: PRE STAGE EARTHWORK ADDITIONS/SUBTRACTIONS ARE NOT INCLUDED IN THE EARTHWORK QUANTITIES FOR EACH CROSS SECTION (SEE EARTHWORK SCHEDULE FOR BREAKDOWN OF QUANTITIES BY STAGE)

EARTHWORK QUANTITIES (SF)	
EXCAVATION	= 7.3
UNBANKMENT	= 26.7
EMBANKMENT	= 38.3
EXC.(SPECIAL)	= 0.0



DATE	BY
REVISION	
NOTED	
GRADES CHECKED	
STRUCTURE NOTATION OK'D	
NO.	

TYLIN INTERNATIONAL



ILLINOIS RTE. 60 (TOWNLIN RD)
STA. 433+50 TO STA. 434+50

P:\60245811_601\Road\60\60B01.dwg 5/7/2007 9:25:29 AM