

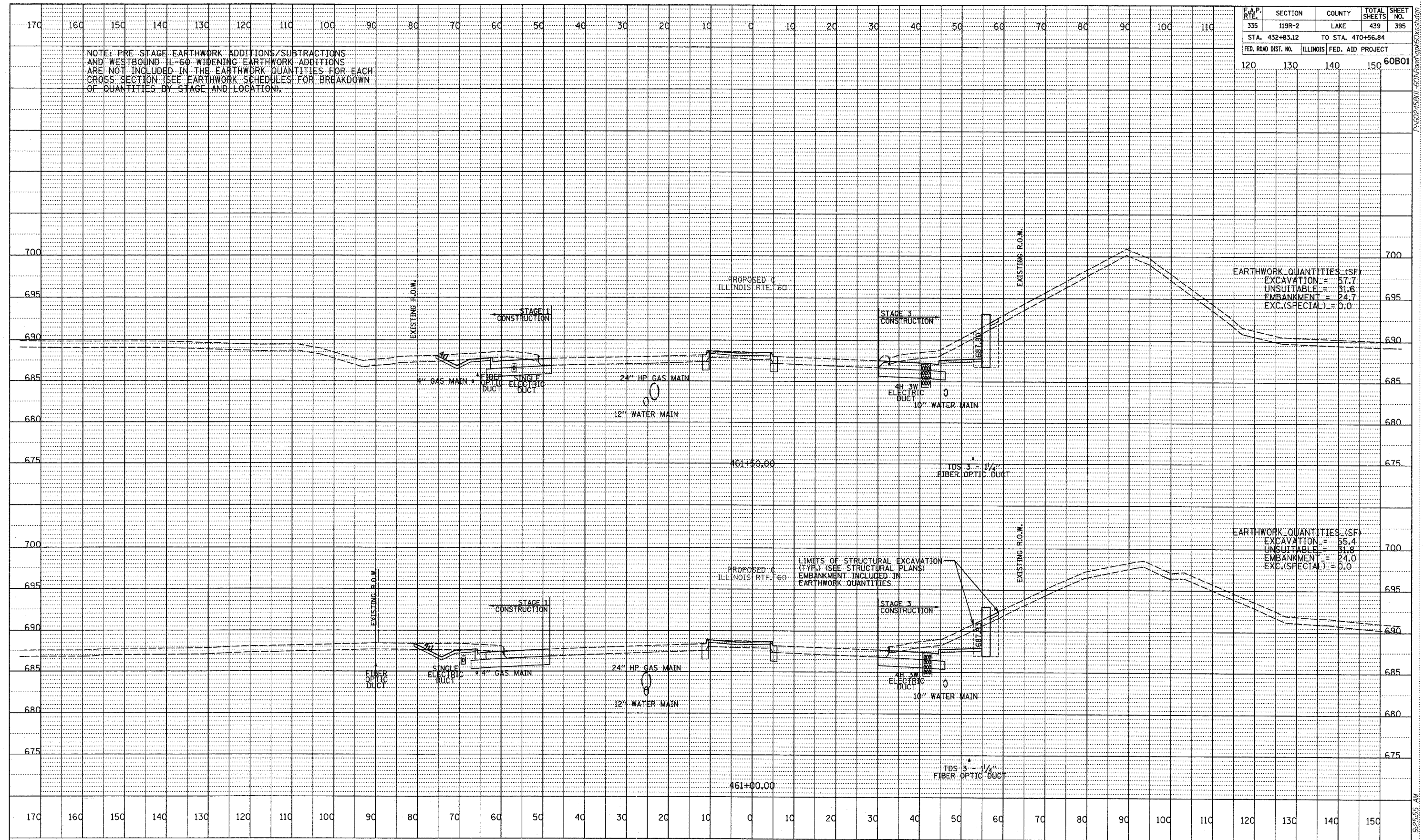
F.A.P. RTE.	SECTION	COUNTY	TOTAL SHEETS	SHEET NO.
335	119R-2	LAKE	439	395
STA. 432+83.12		TO STA. 470+56.84		
FED. ROAD DIST. NO.	ILLINOIS FED. AID PROJECT			
	120	130	140	150

NOTE: PRE STAGE EARTHWORK ADDITIONS/SUBTRACTIONS AND WESTBOUND IL-60 WIDENING EARTHWORK ADDITIONS ARE NOT INCLUDED IN THE EARTHWORK QUANTITIES FOR EACH CROSS SECTION (SEE EARTHWORK SCHEDULES FOR BREAKDOWN OF QUANTITIES BY STAGE AND LOCATION).

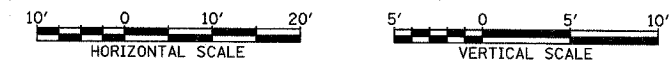
EARTHWORK QUANTITIES (SF)  
 EXCAVATION = 57.7  
 UNSUITABLE = 31.6  
 EMBANKMENT = 24.7  
 EXC.(SPECIAL) = 0.0

EARTHWORK QUANTITIES (SF)  
 EXCAVATION = 55.4  
 UNSUITABLE = 31.8  
 EMBANKMENT = 24.0  
 EXC.(SPECIAL) = 0.0

DATE	
BY	
PROF. ILE SURVEYED	
PLotted	
NOTE BOOK	
NO.	
STRUCTURE NOTATIONS CHRD	



TYLIN INTERNATIONAL



ILLINOIS RTE. 60 (TOWNLIN RD)  
 STA. 461+00 TO STA. 461+50

9/25/07 9:25:55 AM