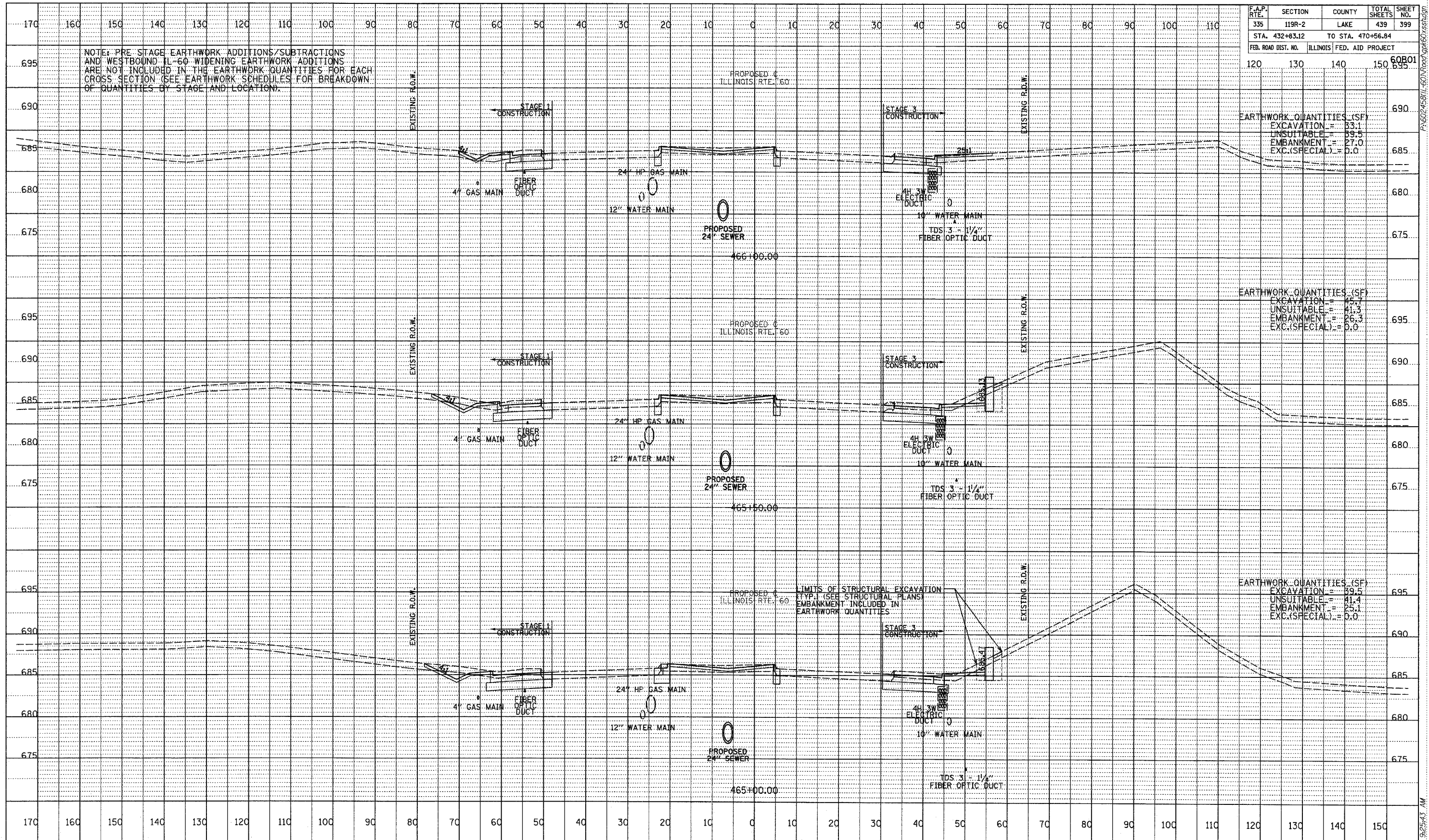


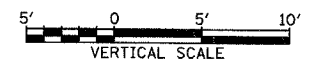
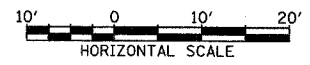
F.A.P. RTE.	SECTION	COUNTY	TOTAL SHEETS	SHEET NO.
335	119R-2	LAKE	439	399
STA. 432+83.12		TO STA. 470+56.84		
FED. ROAD DIST. NO.		ILLINOIS FED. AID PROJECT		

NOTE: PRE-STAGE EARTHWORK ADDITIONS/SUBTRACTIONS AND WESTBOUND IL-60 WIDENING EARTHWORK ADDITIONS ARE NOT INCLUDED IN THE EARTHWORK QUANTITIES FOR EACH CROSS SECTION (SEE EARTHWORK SCHEDULES FOR BREAKDOWN OF QUANTITIES BY STAGE AND LOCATION).



DATE	
BY	
REVIEWED	
GRADES CHECKED	
INSTRUMENTED	
NO.	
STATUS	
DATE	

TYLIN INTERNATIONAL



ILLINOIS RTE. 60 (TOWNLIN RD)
STA. 465+00 TO STA. 466+00

F:\6024581\60\Road\60\60.sst.dwg 5/7/2007 9:25:43 AM