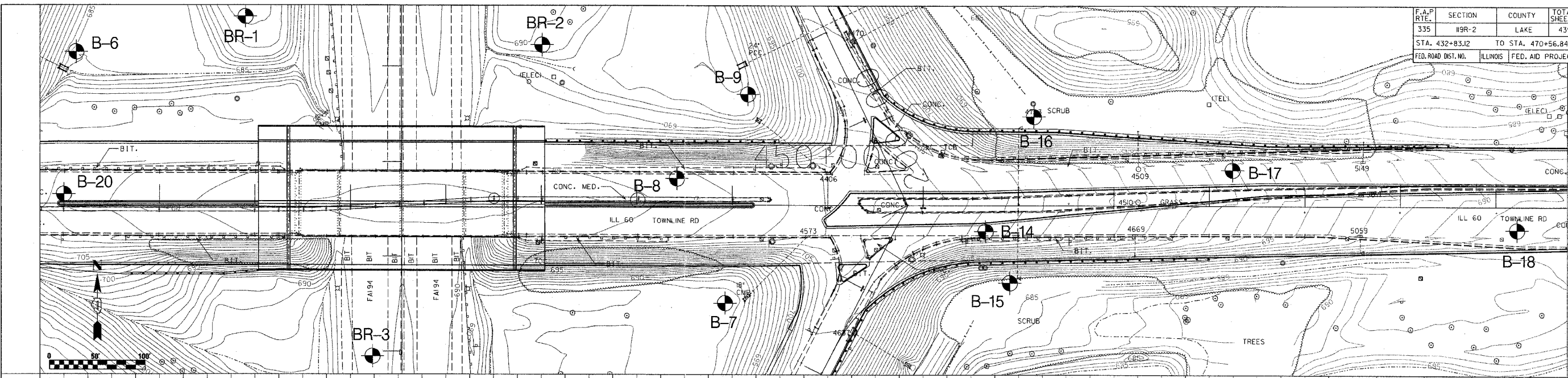
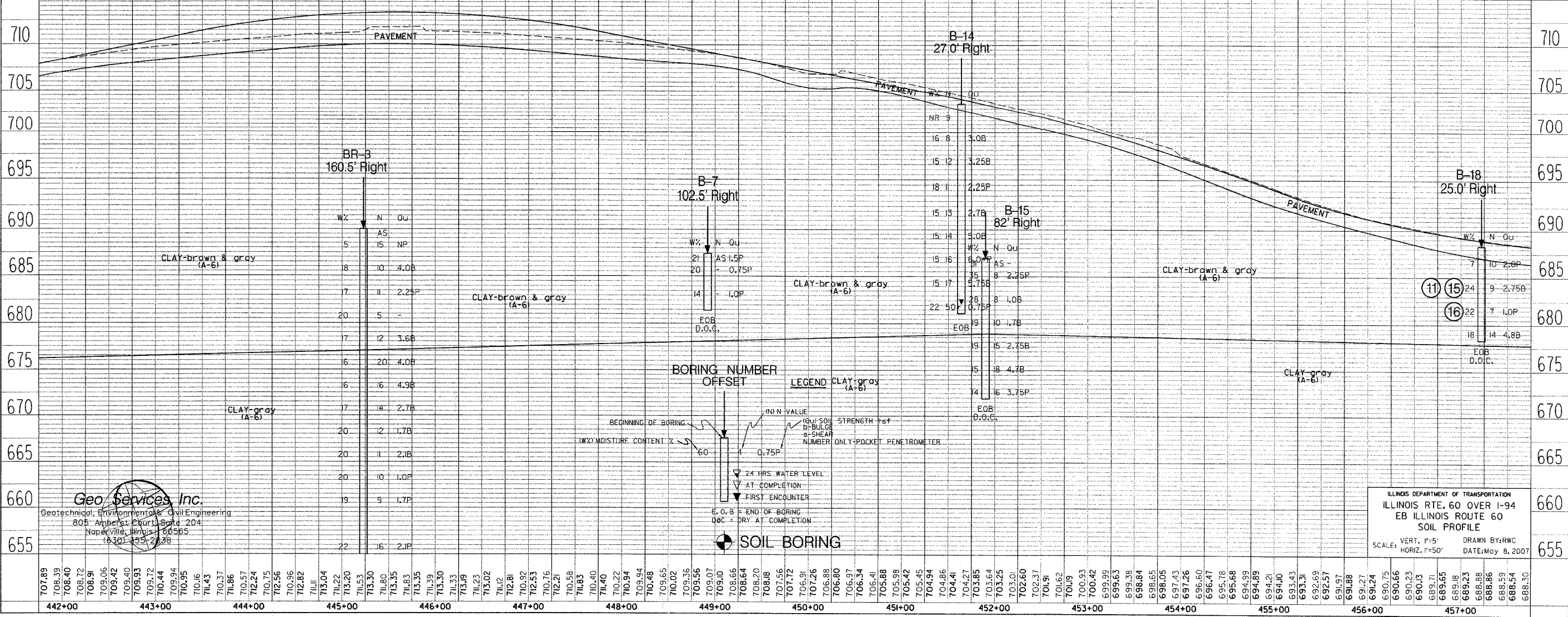


F.A.P. RTE.	SECTION	COUNTY	TOTAL SHEETS	SHEET NO.
335	119R-2	LAKE	439	439B
STA. 432+83.12		TO STA. 470+56.84		
FED. ROAD DIST. NO.	ILLINOIS	FED. AID PROJECT	60B0	

PLAN	DATE	BY
REVISIONS		
NO.	DESCRIPTION	DATE
1	ISSUED FOR CONSTRUCTION	
2	REVISED	



PROFILE	DATE	BY
REVISIONS		
NO.	DESCRIPTION	DATE
1	ISSUED FOR CONSTRUCTION	
2	REVISED	



Geo Services Inc.
 Geotechnical, Environmental & Civil Engineering
 805 Amherst Court, Suite 204
 Naperville, Illinois 60565
 (630) 455-2288

SOIL BORING

LEGEND CLAY gray (A-6)

IN N VALUE
 (Q) SOIL STRENGTH psf
 (S) SHEAR NUMBER ONLY-POCKET PENETROMETER

W% MOISTURE CONTENT %

24 HRS. WATER LEVEL
 AT COMPLETION
 FIRST ENCOUNTER

E.O.B. = END OF BORING
 D.O.C. = DRY AT COMPLETION

ILLINOIS DEPARTMENT OF TRANSPORTATION
 ILLINOIS RTE. 60 OVER I-94
 EB ILLINOIS ROUTE 60
 SOIL PROFILE

SCALE: VERT. 1"=5'
 HORIZ. 1"=50'

DRAWN BY: RWC
 DATE: May 8, 2007