

F.A.U. RTE.	SECTION	COUNTY	TOTAL SHEETS	SHEET NO.
2503	49 BR-1	KANE	27	1
			+4	
			<u>31</u>	

STATE OF ILLINOIS
DEPARTMENT OF TRANSPORTATION
DIVISION OF HIGHWAYS

PROPOSED HIGHWAY PLANS

**F.A.U. 2503: ILLINOIS ROUTE 25
OVER NORTON CREEK**

SECTION: 49 BR-1

SN: 045-0045

BRIDGE DECK REPLACEMENT

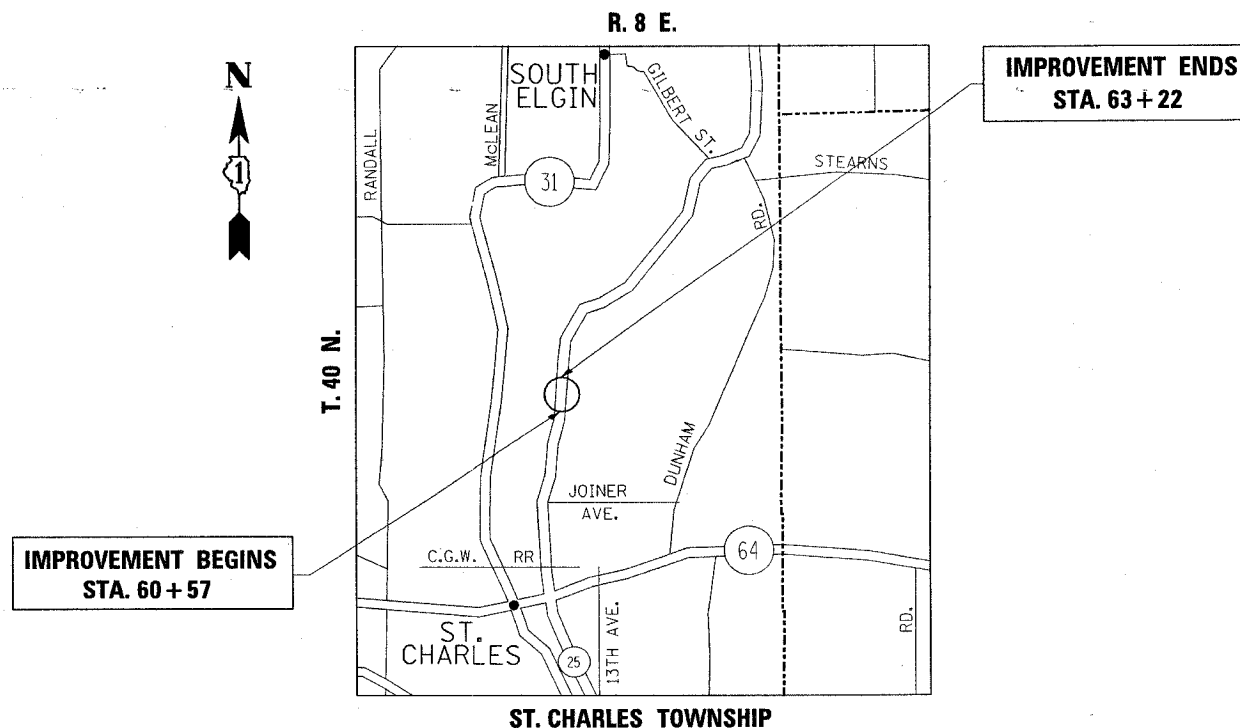
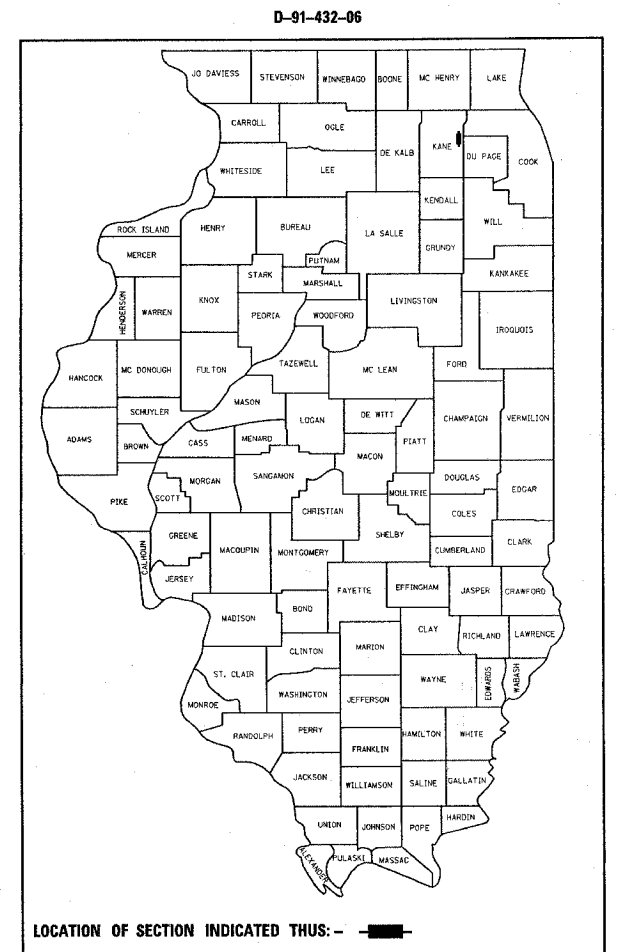
KANE COUNTY

C-91-432-06

FOR INDEX OF SHEETS, SEE SHEET NO. 2

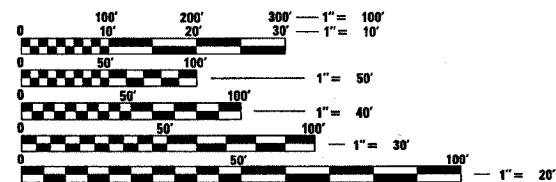
THIS IMPROVEMENT IS LOCATED IN THE CITY OF ST. CHARLES AND ST. CHARLES TOWNSHIP

TRAFFIC DATA:
2005 ADT: 10,000
SPEED LIMIT: 35 MPH



GROSS AND NET LENGTH OF IMPROVEMENT = 266 FEET (0.05 MILE)

DISTRICT ONE - DESIGN AND PLAN PREPARATION ENGINEER - K. ENG / L. TRAN (847) 705-4240



FULL SIZE PLANS HAVE BEEN PREPARED USING STANDARD ENGINEERING SCALES. REDUCED SIZED PLANS WILL NOT CONFORM TO STANDARD SCALES. IN MAKING MEASUREMENTS ON REDUCED PLANS, THE ABOVE SCALES MAY BE USED.

J.U.L.I.E.
JOINT UTILITY LOCATION INFORMATION FOR EXCAVATION
1-800-892-0123

CONTRACT NO. 60B81

STATE OF ILLINOIS
DEPARTMENT OF TRANSPORTATION
DIVISION OF HIGHWAYS

SUBMITTED May 17 2007

Diane O'Keefe Kof
DEPUTY DIRECTOR OF HIGHWAYS, REGION ENGINEER

June 29, 20 07
Eric S. Harn
ENGINEER OF DESIGN AND ENVIRONMENT

June 29, 20 07
Melton R. Sees, P.E.
DIRECTOR OF HIGHWAYS, CHIEF ENGINEER

PRINTED BY THE AUTHORITY
OF THE STATE OF ILLINOIS