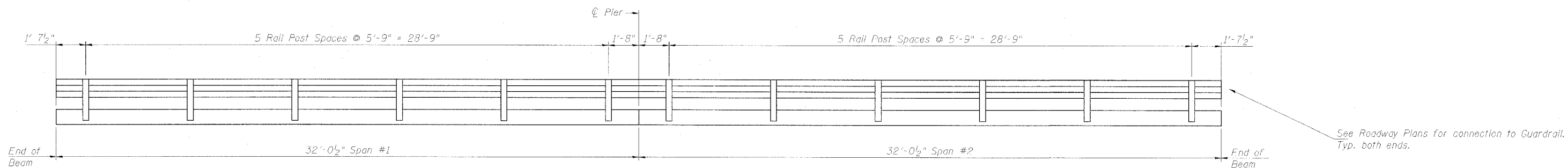


STATE OF ILLINOIS  
DEPARTMENT OF TRANSPORTATION

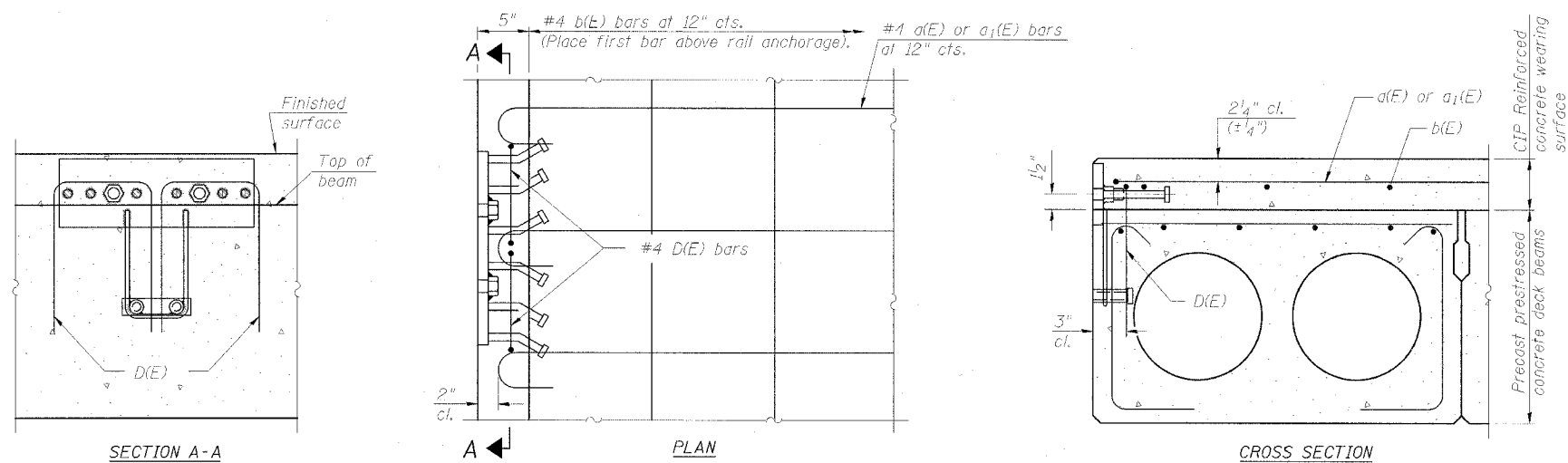
ROUTE NO.	SECTION	COUNTY	TOTAL SHEETS	SHEET NO.	SHEET NO. 7
SA 13		Kane	27	13	10 SHEETS
FED. ROAD DIST. NO. 7	ILLINOIS	FED. AID PROJECT			

Contract # 60B81



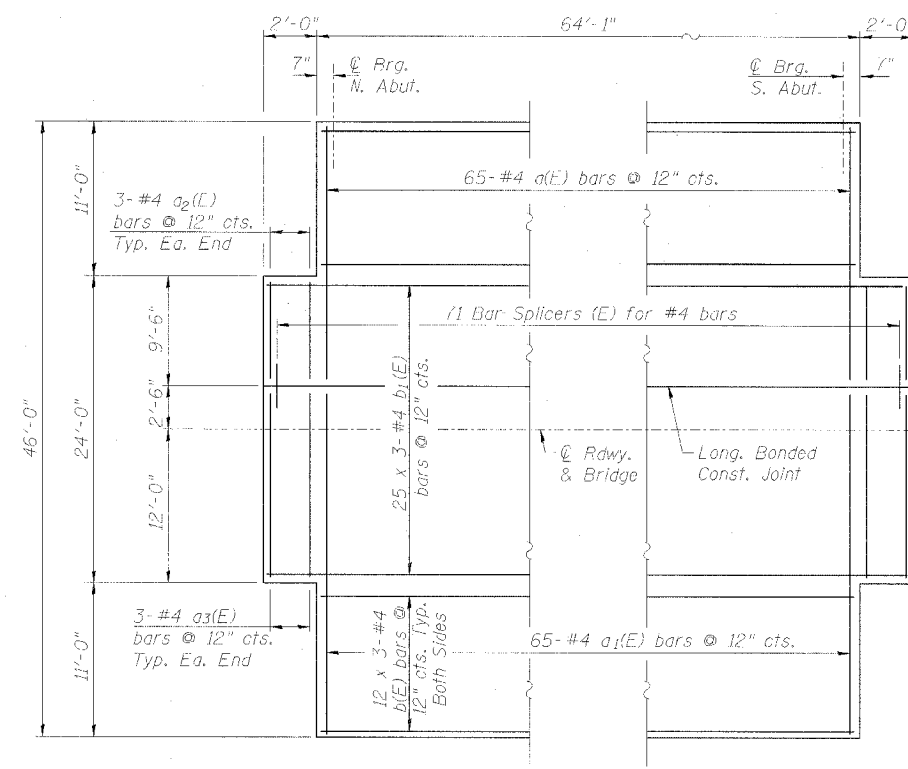
See Roadway Plans for connection to Guardrail. Typ. both ends.

RAIL POST SPACING DETAIL



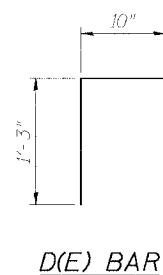
REINFORCED CONCRETE WEARING SURFACE AND RAILING CONNECTION DETAILS

The rail anchorage shall be cast with the beam and the wearing surface shall be cast in the field. Formwork necessary for the wearing surface may be secured utilizing the bottom rail anchorage inserts and/or additional inserts cast into the beam. Drilling into the beam will not be permitted.

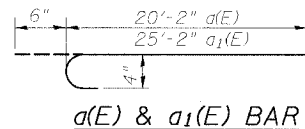


CONCRETE WEARING SURFACE PARTIAL PLAN

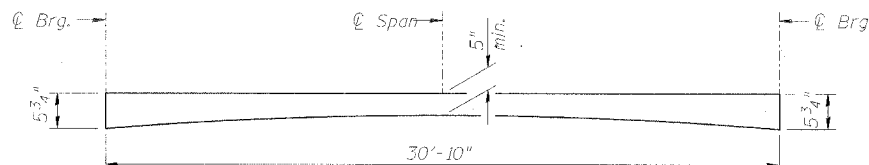
Laps: #4 bars - 1'-4"



D(E) BAR



a(E) & a1(E) BAR



REINFORCED CONCRETE WEARING SURFACE PROFILE

Thickness on center beam will vary from those shown above at edges to an additional 3/8" at C of roadway.

BILL OF MATERIAL

Bar	No.	Size	Length	Shape
a(E)	65	#4	20'-8"	U
a1(E)	65	#4	25'-8"	U
a2(E)	6	#4	9'-2"	U
a3(E)	6	#4	14'-2"	U
b(E)	72	#4	22'-2"	U
b1(E)	75	#4	23'-6"	U

DESIGNED	DDB
CHECKED	LLV
DRAWN	MGM
CHECKED	DDB

EXAMINED	200
PASSED	ENGINEER OF BRIDGE DESIGN
	ENGINEER OF BRIDGES AND STRUCTURES

RAIL POST SPACING AND  
CONCRETE WEARING SURFACE  
S.A. 13 (IL RTE. 25)  
OVER NORTON CREEK  
S.A. RTE. 13 (F.A.S. 106)  
KANE COUNTY, STA. 61+92.50  
STRUCTURE NO. 045-0045

**STS Consultants**  
111 NE Jefferson Ave.  
Peoria, Illinois 61602  
Ph(309)676-8464  
FAX(309)676-5445  
IL Design Firm Reg. No. 184-001518