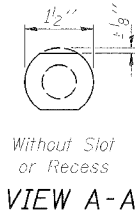
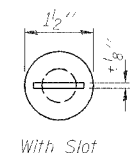
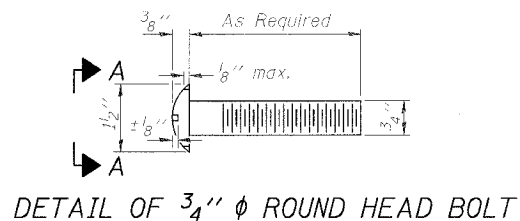
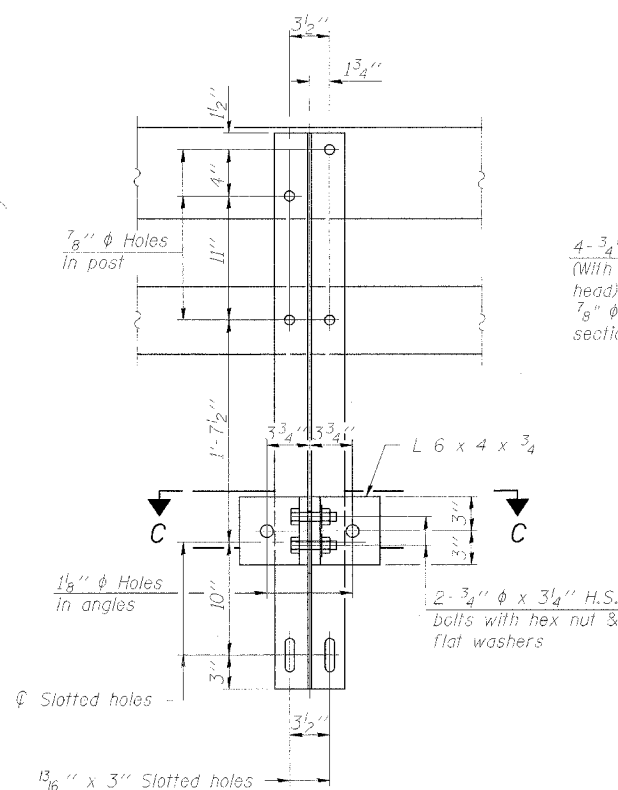


STATE OF ILLINOIS
DEPARTMENT OF TRANSPORTATION

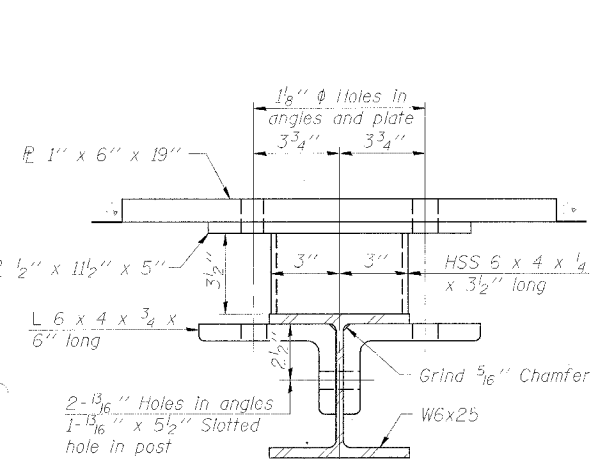
ROUTE NO.	SECTION	COUNTY	DATE	SHEET	SHEET NO. 8 10 SHEETS
SA 13	-	Kane	27	14	
FED. ROAD DIST. NO. 1	ILLINOIS	FED. AID PROJECT			



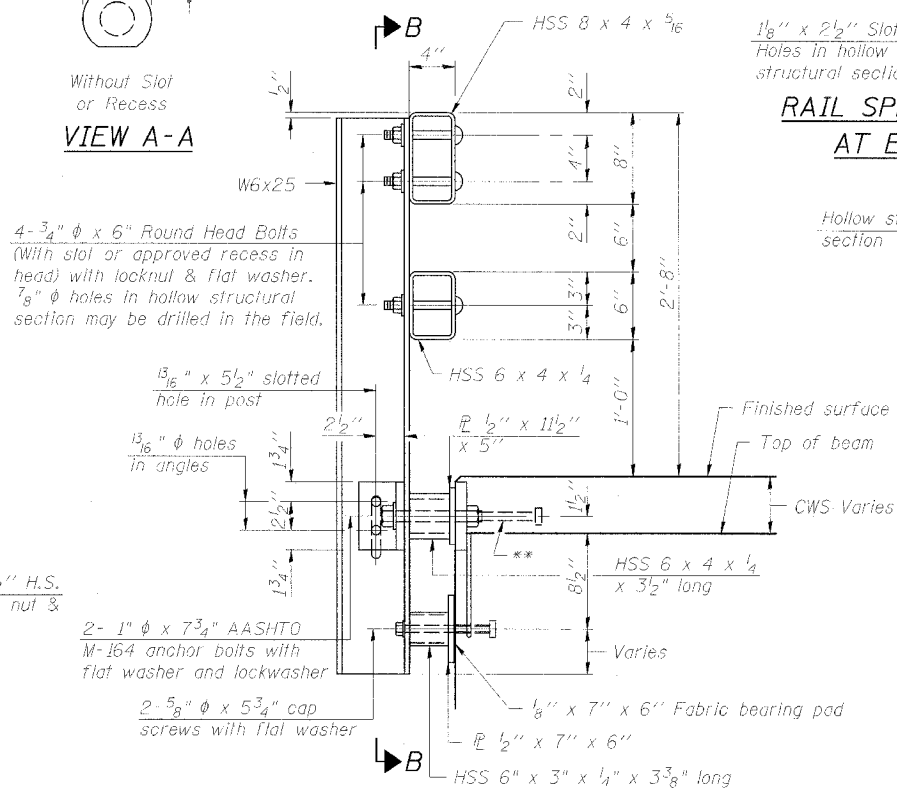
DETAIL OF 3/4" ϕ ROUND HEAD BOLT



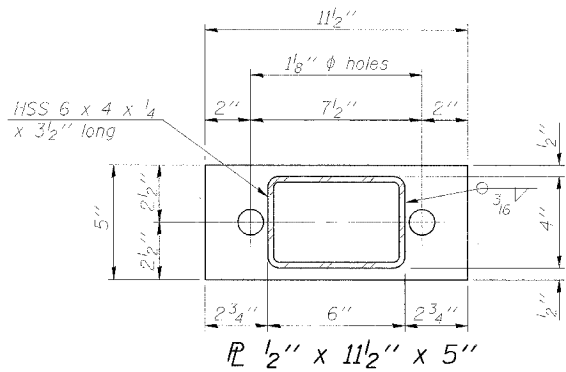
SECTION B-B



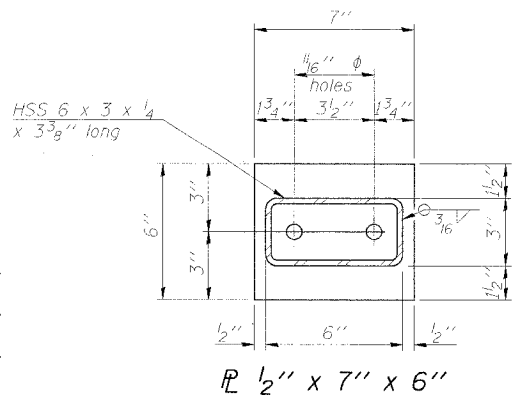
SECTION C-C



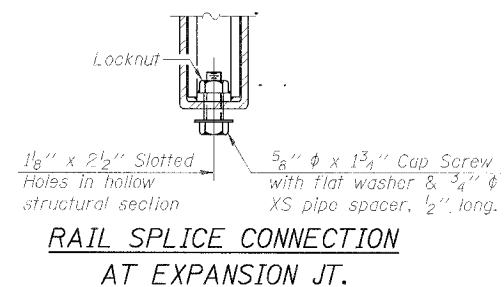
SECTION AT RAIL POST



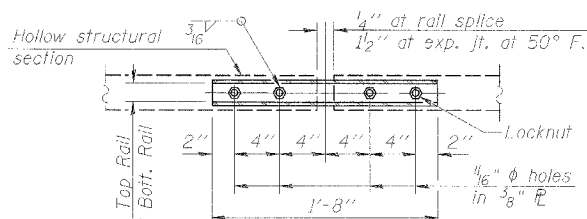
1 1/2" x 11 1/2" x 5"



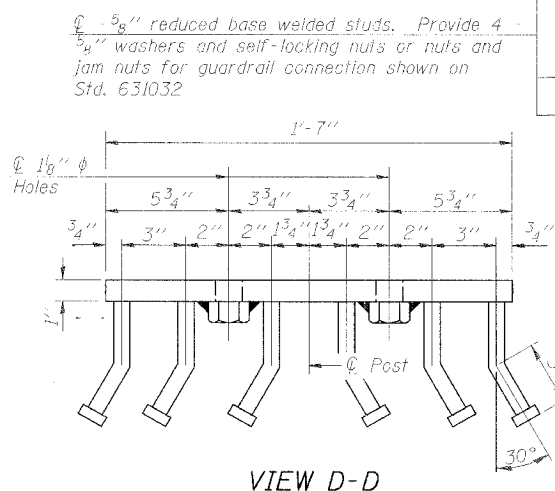
1 1/2" x 7" x 6"



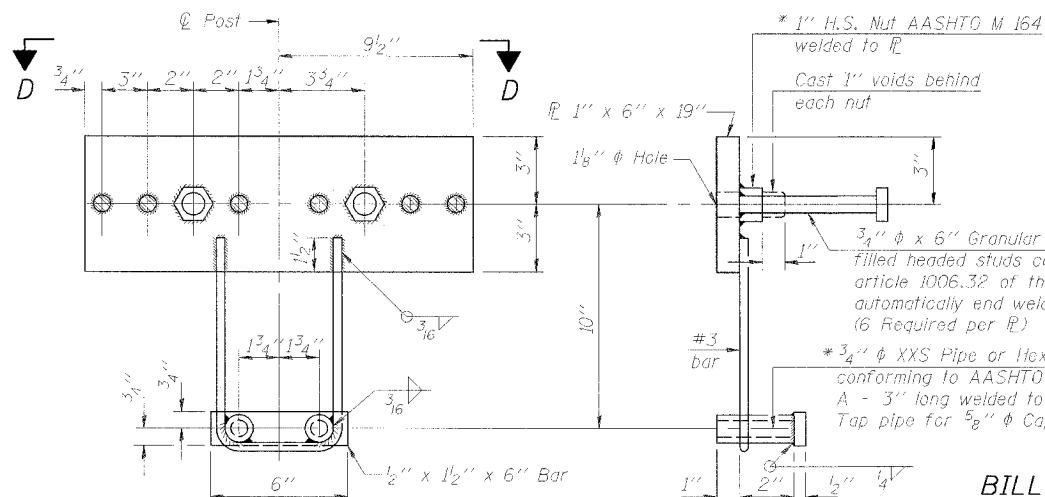
RAIL SPLICE CONNECTION
AT EXPANSION JT.



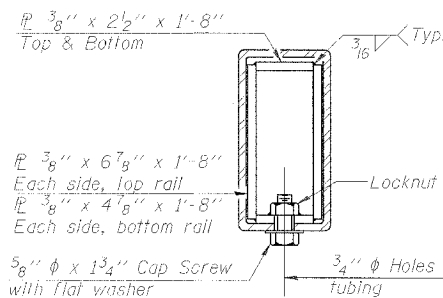
PLAN-BOTT. SPLICE TYPICAL



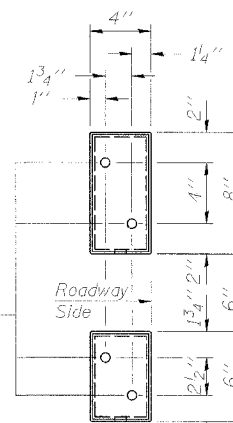
VIEW D-D



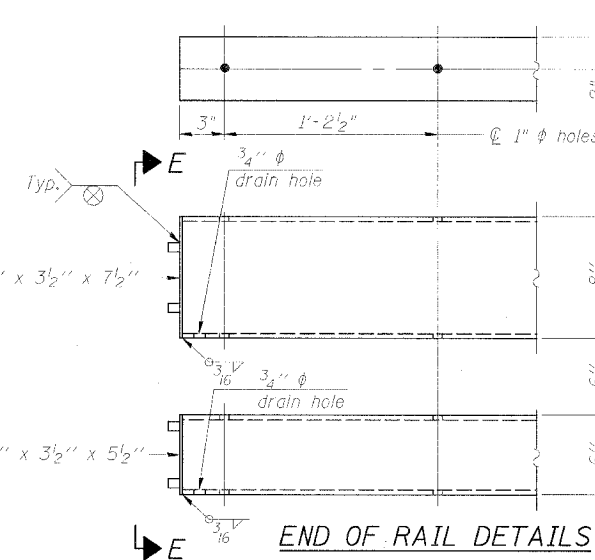
ANCHOR DEVICE



SECTION AT
RAIL SPLICE



VIEW E-E



END OF RAIL DETAILS

Notes:
All field drilled holes shall be coated with an approved zinc rich paint before erection.
For multi span bridges, sufficient 1/4" x 6" x 1'-2" galvanized steel shims shall be provided to align rail between adjacent spans. Cost included with Steel Bridge Rail, Type SM.
Steel rail elements shall be galvanized according to Article 509.05 of the Standard Specifications.
** The studs of the anchor devices shall be placed below the top reinforcement bars and the outermost longitudinal reinforcement bar shall be placed directly above the studs of the rail post anchor device.

**STEEL RAILING, TYPE SM
WITH CONCRETE WEARING SURFACE**
S.A. 13 (IL RTE. 25)
OVER NORTON CREEK
S.A. RTE. 13 (F.A.S. 106)
KANE COUNTY, STA. 61+92.50
STRUCTURE NO. 045-0045

DESIGNED	DDB	200
CHECKED	LLV	ENGINEER OF BRIDGE DESIGN
DRAWN	MGM	ENGINEER OF BRIDGES AND STRUCTURES
CHECKED	DDB	

R-34CWS 11-1-06 (6'-3" Maximum Post Spacing) (5" minimum to 7 1/8" maximum CWS thickness)

* Threaded areas shall be plugged or blocked off during casting of beam. Galvanized after fabrication.

BILL OF MATERIAL

Item	Unit	Quantity
Steel Railing, Type SM	Foot	128

STS Consultants
111 NE Jefferson Ave.
Peoria, Illinois 61602
Ph (309) 676-8464
FAX (309) 676-5445
IL Design Firm Reg. No. 184-001518