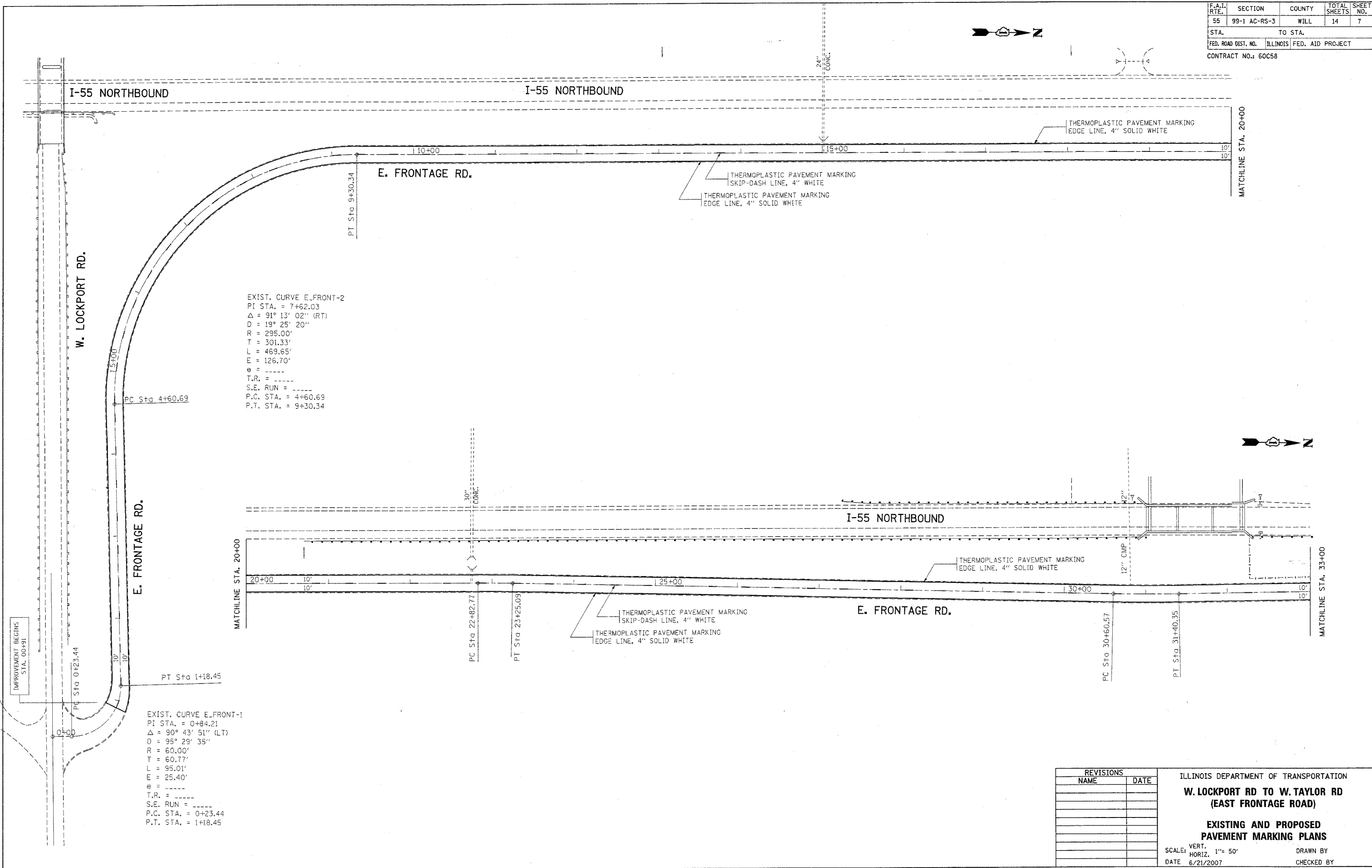


F.A.I. RTE.	SECTION	COUNTY	TOTAL SHEETS	SHEET NO.
55	99-1 AC-RS-3	WILL	14	7
STA.		TO STA.		
FED. ROAD DIST. NO.	ILLINOIS	FED. AID PROJECT		
CONTRACT NO.: 60C58				



EXIST. CURVE E.FRONT-2  
 PI STA. = 7+62.03  
 $\Delta$  = 91° 13' 02" (RT)  
 D = 19° 25' 20"  
 R = 295.00'  
 T = 301.33'  
 L = 469.65'  
 E = 126.70'  
 $\theta$  = -----  
 T.R. = -----  
 S.E. RUN = -----  
 P.C. STA. = 4+60.69  
 P.T. STA. = 9+30.34

EXIST. CURVE E.FRONT-1  
 PI STA. = 0+84.21  
 $\Delta$  = 90° 43' 51" (LT)  
 D = 95° 29' 35"  
 R = 60.00'  
 T = 60.77'  
 L = 95.01'  
 E = 25.40'  
 $\theta$  = -----  
 T.R. = -----  
 S.E. RUN = -----  
 P.C. STA. = 0+23.44  
 P.T. STA. = 1+18.45

IMPROVEMENT BEGINS  
 STA. 00+91

PLOT DATE = 6/21/2007  
 FILE NAME = c:\pva\mca\124487\sh\_rdb\pdp  
 PLOT SCALE = 1/8"=1'-0" / IN.  
 USER NAME = galbarab

REVISIONS	
NAME	DATE

ILLINOIS DEPARTMENT OF TRANSPORTATION  
**W. LOCKPORT RD TO W. TAYLOR RD  
 (EAST FRONTAGE ROAD)**  
**EXISTING AND PROPOSED  
 PAVEMENT MARKING PLANS**  
 SCALE: VERT. 1"= 50'  
 HORIZ. 1"= 50'  
 DATE 6/21/2007  
 DRAWN BY  
 CHECKED BY