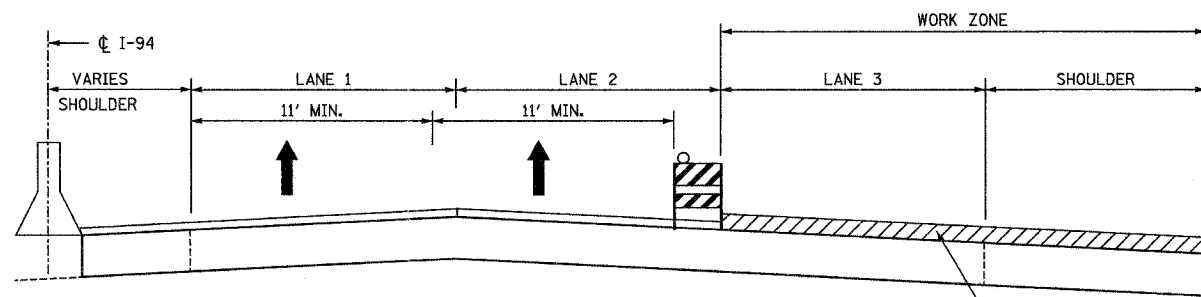


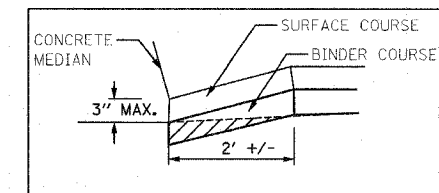
STAGE III: 2008

- WORK SEQUENCE:**
- APPLY TEMPORARY PAVEMENT MARKING LANES 1 & 2
 - MILL SHOULDER IN CURB AND GUTTER AREAS
 - ADJUST STRUCTURE FRAMES AND LIDS
 - APPLY LEVELING BINDER, BINDER COURSE & SURFACE COURSE
 - INSTALL RUMBLE STRIPS
 - APPLY PERMANENT PAVEMENT MARKING FOR OUTSIDE EOP AND SHOULDER

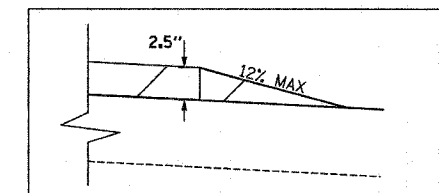


DAY OPERATION

LEVELING BINDER, BINDER COURSE, AND SURFACE COURSE



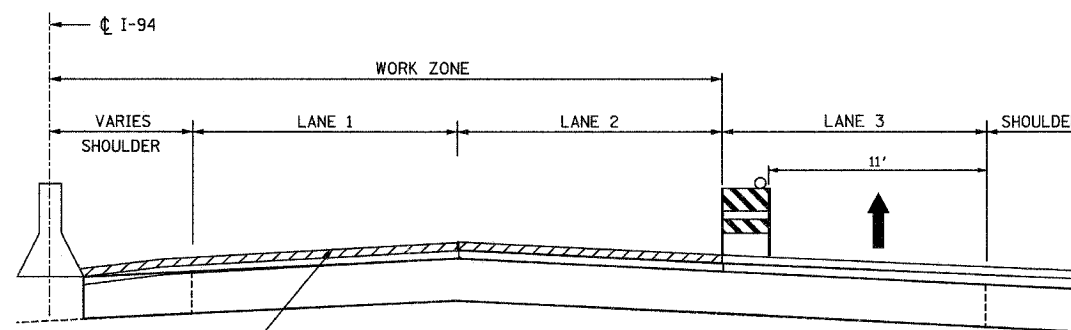
MEDIAN BARRIER DETAIL



WEDGE DETAIL

STAGE IV: 2008

- APPLY SURFACE COURSE
- INSTALL RUMBLE STRIPS
- APPLY PAVEMENT MARKING
- APPLY RAISED REFLECTIVE PAVEMENT MARKERS



NIGHT OPERATION

NOTE:
CONTRACTOR TO FOLLOW STANDARD SPECIFICATION 603.07 "PROTECTION UNDER TRAFFIC" FOR FRAME AND LID ADJUSTMENT BEFORE LANE 1 CAN BE OPENED TO TRAFFIC

REVISIONS	
NAME	DATE

ILLINOIS DEPARTMENT OF TRANSPORTATION

TRAFFIC CONTROL
AND PROTECTION
F.A.I. 94 EDENS EXPRESSWAY
TYPICAL SECTIONS PER SEGMENT

SCALE: N.T.S.
DATE: JUNE 2007

DRAWN BY
CHECKED BY

Edens I 94 Resurfacing Project

PLOT DATE = 06/18/2007
FILE NAME = #FILE#
PLOT SCALE = #SCALE#
USER NAME = #GROUT#