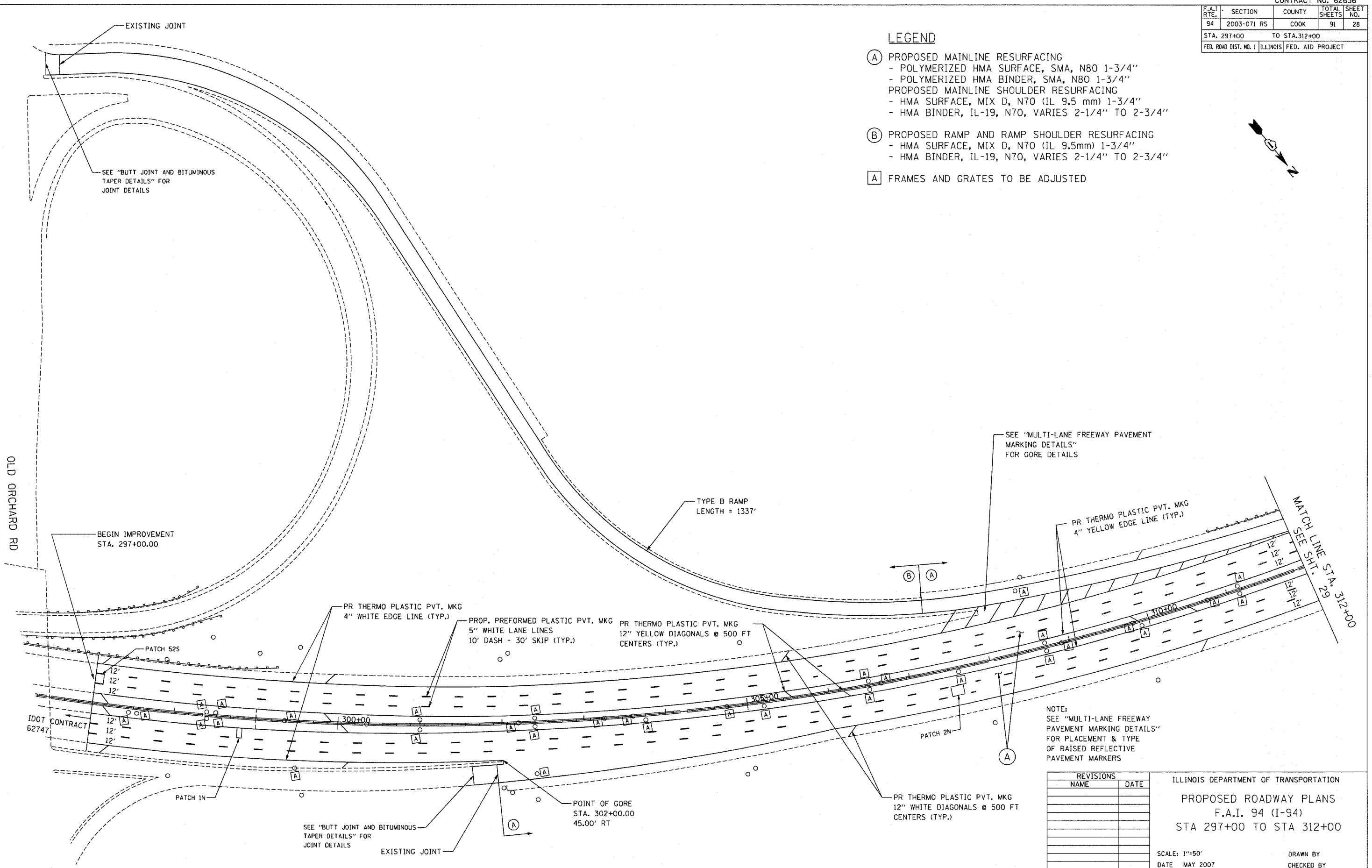


F.A.I. RTE.	SECTION	COUNTY	TOTAL SHEETS	SHEET NO.
94	2003-071 RS	COOK	91	28
STA. 297+00		TO STA. 312+00		
FED. ROAD DIST. NO. 1		ILLINOIS FED. AID PROJECT		

LEGEND

- (A) PROPOSED MAINLINE RESURFACING
 - POLYMERIZED HMA SURFACE, SMA, N80 1-3/4"
 - POLYMERIZED HMA BINDER, SMA, N80 1-3/4"
- PROPOSED MAINLINE SHOULDER RESURFACING
 - HMA SURFACE, MIX D, N70 (IL 9.5 mm) 1-3/4"
 - HMA BINDER, IL-19, N70, VARIES 2-1/4" TO 2-3/4"
- (B) PROPOSED RAMP AND RAMP SHOULDER RESURFACING
 - HMA SURFACE, MIX D, N70 (IL 9.5mm) 1-3/4"
 - HMA BINDER, IL-19, N70, VARIES 2-1/4" TO 2-3/4"
- [A] FRAMES AND GRATES TO BE ADJUSTED



NOTE:
SEE "MULTI-LANE FREEWAY PAVEMENT MARKING DETAILS" FOR PLACEMENT & TYPE OF RAISED REFLECTIVE PAVEMENT MARKERS

REVISIONS	
NAME	DATE

ILLINOIS DEPARTMENT OF TRANSPORTATION
PROPOSED ROADWAY PLANS
 F.A.I. 94 (I-94)
 STA 297+00 TO STA 312+00

SCALE: 1"=50'
 DATE MAY 2007

DRAWN BY
 CHECKED BY

PLOT DATE = 5/22/2007
 FILE NAME = 01FILE19
 PLOT SCALE = 1/8"=1'-0"
 USER NAME = CBT/OUT