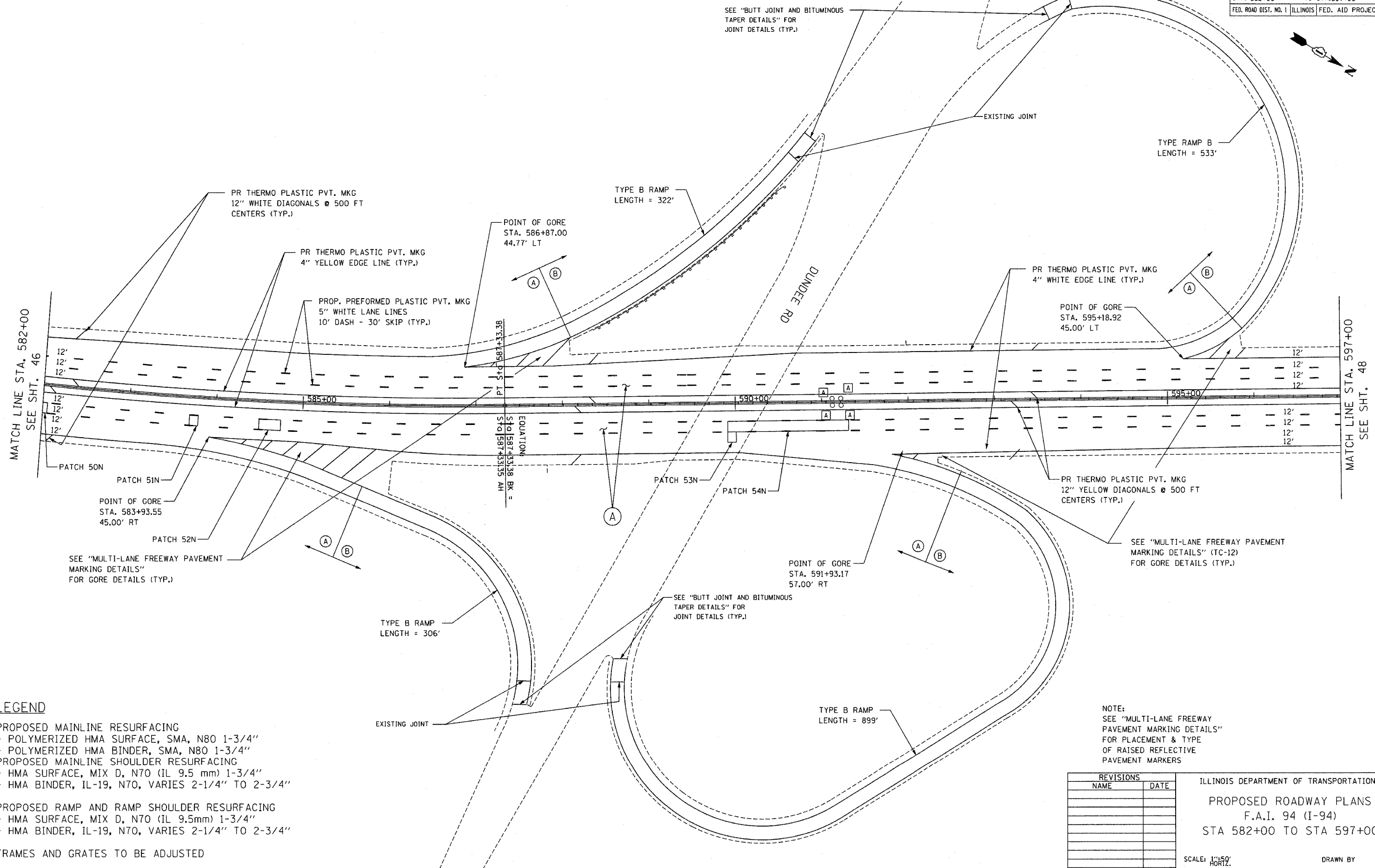


F.A.I. RTE.	SECTION	COUNTY	TOTAL SHEETS	SHEET NO.
94	2003-071 RS	COOK	91	47
STA. 582+00		TO STA. 597+00		
FED. ROAD DIST. NO. 1 ILLINOIS FED. AID PROJECT				



LEGEND

- (A) PROPOSED MAINLINE RESURFACING
 - POLYMERIZED HMA SURFACE, SMA, N80 1-3/4"
 - POLYMERIZED HMA BINDER, SMA, N80 1-3/4"
- PROPOSED MAINLINE SHOULDER RESURFACING
 - HMA SURFACE, MIX D, N70 (IL 9.5 mm) 1-3/4"
 - HMA BINDER, IL-19, N70, VARIES 2-1/4" TO 2-3/4"
- (B) PROPOSED RAMP AND RAMP SHOULDER RESURFACING
 - HMA SURFACE, MIX D, N70 (IL 9.5mm) 1-3/4"
 - HMA BINDER, IL-19, N70, VARIES 2-1/4" TO 2-3/4"
- (A) FRAMES AND GRATES TO BE ADJUSTED

NOTE:
SEE "MULTI-LANE FREEWAY PAVEMENT MARKING DETAILS" FOR PLACEMENT & TYPE OF RAISED REFLECTIVE PAVEMENT MARKERS

REVISIONS	
NAME	DATE

ILLINOIS DEPARTMENT OF TRANSPORTATION
 PROPOSED ROADWAY PLANS
 F.A.I. 94 (I-94)
 STA 582+00 TO STA 597+00

SCALE: 1"=50'
 HORIZ.
 DATE MAY 2007
 DRAWN BY
 CHECKED BY

PLOT DATE = 5/22/2007
 PLOT SCALE = AS SHOWN
 USER NAME = 08YOUT