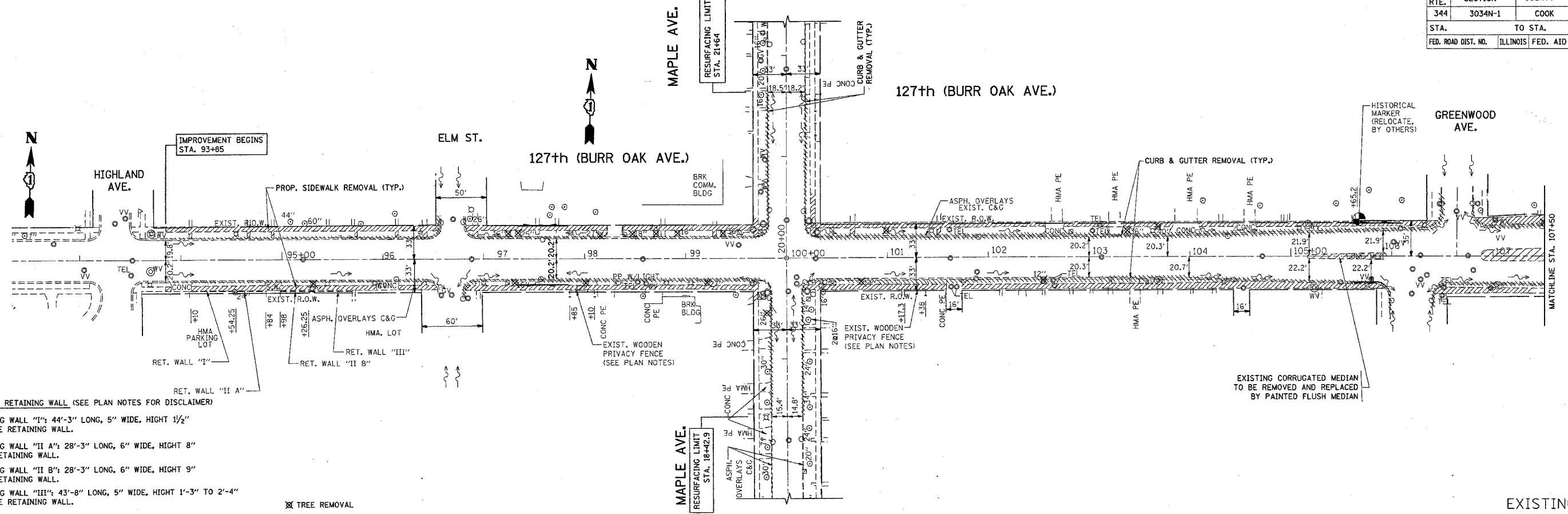


REF-10001
REF-1001

CONTRACT NO. 62719

F.A.P. RTE.	SECTION	COUNTY	TOTAL SHEETS	SHEET NO.
344	3034N-1	COOK	71	12
STA.	TO STA.			
FED. ROAD DIST. NO.	ILLINOIS	FED. AID PROJECT		



EXISTING RETAINING WALL (SEE PLAN NOTES FOR DISCLAIMER)

RETAINING WALL "I": 44'-3" LONG, 5" WIDE, HEIGHT 1 1/2"
CONCRETE RETAINING WALL.

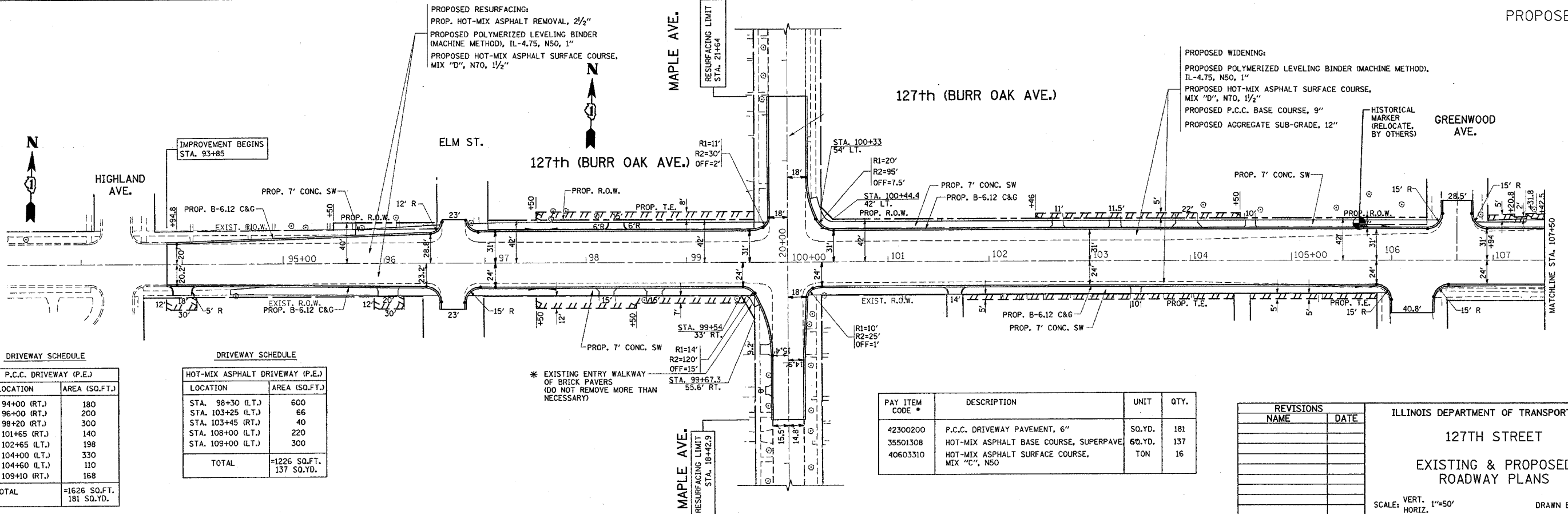
RETAINING WALL "II A": 28'-3" LONG, 6" WIDE, HEIGHT 8"
STONE RETAINING WALL.

RETAINING WALL "II B": 28'-3" LONG, 6" WIDE, HEIGHT 9"
STONE RETAINING WALL.

RETAINING WALL "III": 43'-8" LONG, 5" WIDE, HEIGHT 1'-3" TO 2'-4"
CONCRETE RETAINING WALL.

⊗ TREE REMOVAL

EXISTING
PROPOSED



PROPOSED RESURFACING:
PROP. HOT-MIX ASPHALT REMOVAL, 2 1/2"
PROPOSED POLYMERIZED LEVELING BINDER (MACHINE METHOD), IL-4.75, N50, 1"
PROPOSED HOT-MIX ASPHALT SURFACE COURSE, MIX "D", N70, 1 1/2"

PROPOSED WIDENING:
PROPOSED POLYMERIZED LEVELING BINDER (MACHINE METHOD), IL-4.75, N50, 1"
PROPOSED HOT-MIX ASPHALT SURFACE COURSE, MIX "D", N70, 1 1/2"
PROPOSED P.C.C. BASE COURSE, 9"
PROPOSED AGGREGATE SUB-GRADE, 12"

DRIVEWAY SCHEDULE

P.C.C. DRIVEWAY (P.E.)	
LOCATION	AREA (SQ.FT.)
STA. 94+00 (RT.)	180
STA. 96+00 (RT.)	200
STA. 98+20 (RT.)	300
STA. 101+65 (RT.)	140
STA. 102+65 (LT.)	198
STA. 104+00 (LT.)	330
STA. 104+60 (LT.)	110
STA. 109+10 (RT.)	168
TOTAL	=1626 SQ.FT. 181 SQ.YD.

DRIVEWAY SCHEDULE

HOT-MIX ASPHALT DRIVEWAY (P.E.)	
LOCATION	AREA (SQ.FT.)
STA. 98+30 (LT.)	600
STA. 103+25 (LT.)	66
STA. 103+45 (RT.)	40
STA. 108+00 (LT.)	220
STA. 109+00 (LT.)	300
TOTAL	=1226 SQ.FT. 137 SQ.YD.

PAY ITEM CODE *	DESCRIPTION	UNIT	QTY.
42300200	P.C.C. DRIVEWAY PAVEMENT, 6"	SO.YD.	181
35501308	HOT-MIX ASPHALT BASE COURSE, SUPERPAVE	60.YD.	137
40603310	HOT-MIX ASPHALT SURFACE COURSE, MIX "C", N50	TON	16

REVISIONS	
NAME	DATE

ILLINOIS DEPARTMENT OF TRANSPORTATION
127TH STREET
EXISTING & PROPOSED
ROADWAY PLANS

SCALE: VERT. 1"=50'
HORIZ. DATE 1/3/2007
DRAWN BY
CHECKED BY

1/3/2007
c:\p\projects\600403\sh_rdw.dgn
dlr\hoksgm