

STATE OF ILLINOIS
DEPARTMENT OF TRANSPORTATION

ROUTE NO.	SECTION	COUNTY	TOTAL SHEETS	SHEET NO.
F.A.I. 94	2006-043 RS	COOK	135	122a
FED. ROAD DIST. NO. 7	ILLINOIS	FED. AID PROJECT		

Contract # 62747

**SUPERSTRUCTURE
BILL OF MATERIAL**

Bar	No.	Size	Length	Shape
a1(E)	12	#6	35'-2"	—
a1(E)	40	#5	35'-2"	—
a2(E)	6	#6	34'-4"	—
a3(E)	20	#5	34'-4"	—
a4(E)	3	#6	36'-1"	—
a5(E)	10	#5	36'-1"	—
a6(E)	3	#6	54'-1"	—
a7(E)	10	#5	54'-1"	—
d(E)	12	#5	4'-1"	┘
d1(E)	12	#4	5'-1"	L
d2(E)	12	#4	4'-1"	L
d3(E)	8	#5	5'-5"	┘
d4(E)	4	#4	4'-0"	—
d5(E)	12	#5	4'-2"	┘
s(E)	123	#4	4'-9"	□
x(E)	233	#5	2'-5"	—
x1(E)	12	#5	34'-10"	—
x2(E)	6	#5	29'-0"	—
x3(E)	6	#5	48'-0"	—
Concrete Removal			Cu. Yd.	63.7
Concrete Superstructure			Cu. Yd.	69.2
Bridge Deck Grooving			Sq. Yd.	3,105
Protective Coat			Sq. Yd.	120
Reinforcement Bars, Epoxy Coated			Pound	6,600
Silicone Bridge Joint Sealer, 2"			Foot	260
Structural Repair of Concrete (Depth Greater Than 5")			Sq. Ft.	7
Temporary Shoring and Cribbing			Ea.	2

REACTION TABLE

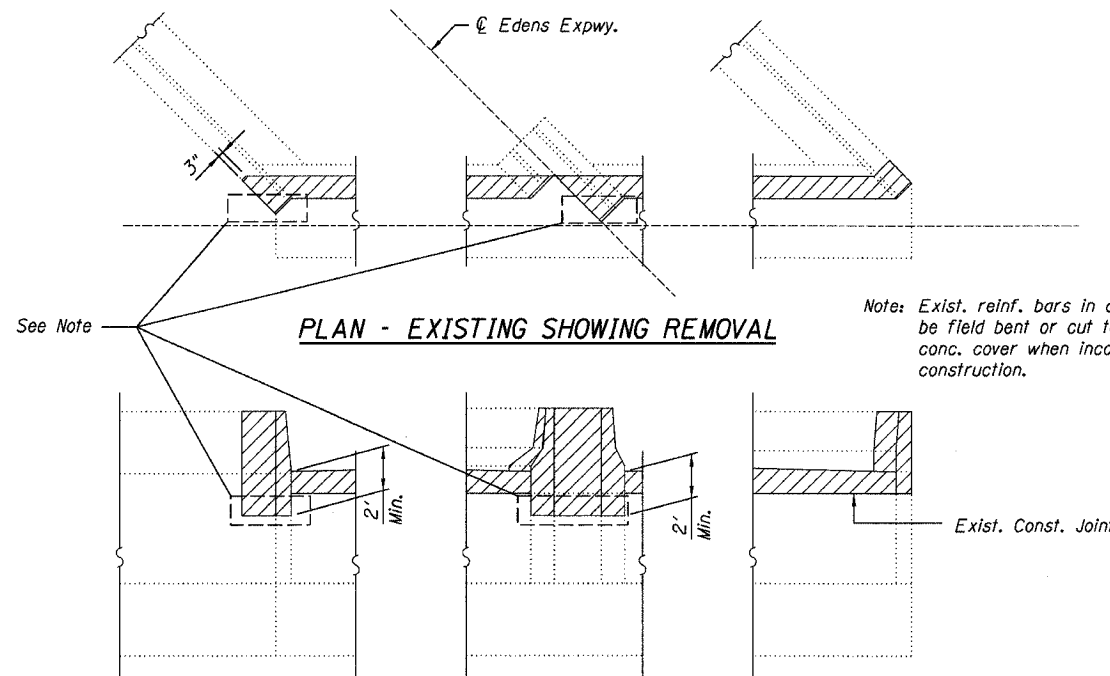
		Abutment
R _g	(k)	25.3
R _h	(k)	31.7
Imp	(k)	7.9
R _{Total}	(k)	64.9

NOTE

Reinforcement bars designated (E) shall be epoxy coated.

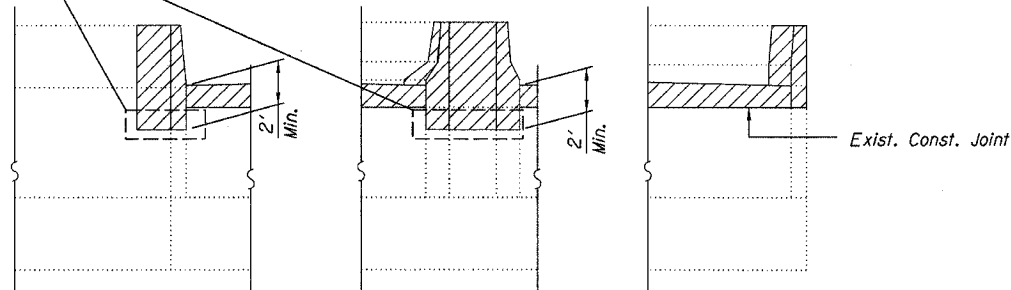
**REINFORCING BAR DETAILS &
SUPERSTRUCTURE BILL OF MATERIAL
F.A.I. 94/ (EDENS EXPRESSWAY)
OVER NORTH BRANCH
COOK COUNTY
STATION 23+63.00
STRUCTURE NO. 016-0107**

Revised 07/13/2007

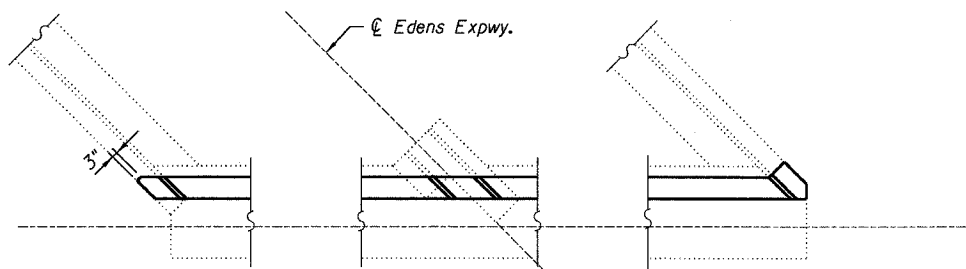


PLAN - EXISTING SHOWING REMOVAL

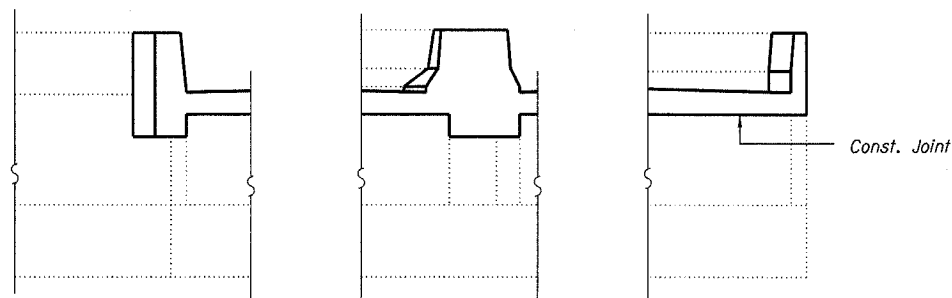
Note: Exist. reinf. bars in areas indicated shall be field bent or cut to provide 1/2" clear conc. cover when incorporated into new construction.



ELEVATION - EXISTING SHOWING REMOVAL



PLAN - PROPOSED



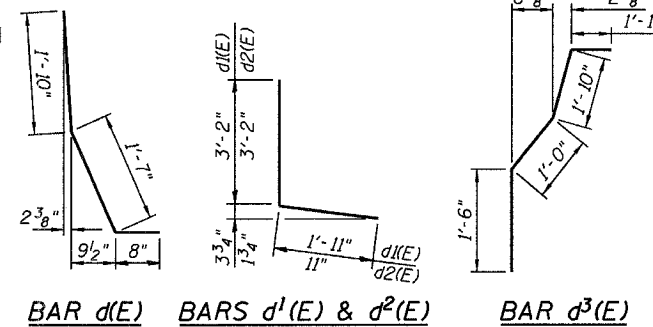
ELEVATION - PROPOSED

DESIGNED -	JSD
CHECKED -	AMK
DRAWN -	JSD
CHECKED -	AMK

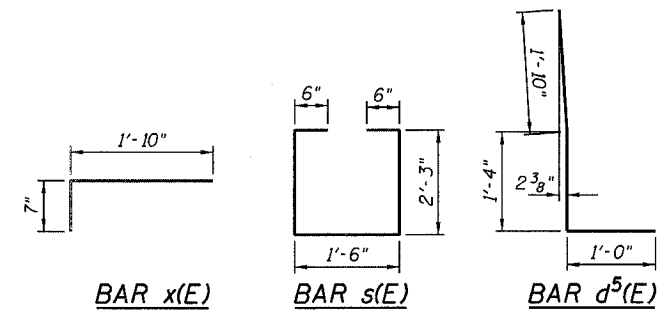
LOCHNER
H.W. LOCHNER, INC., CHICAGO, ILLINOIS

LEGEND

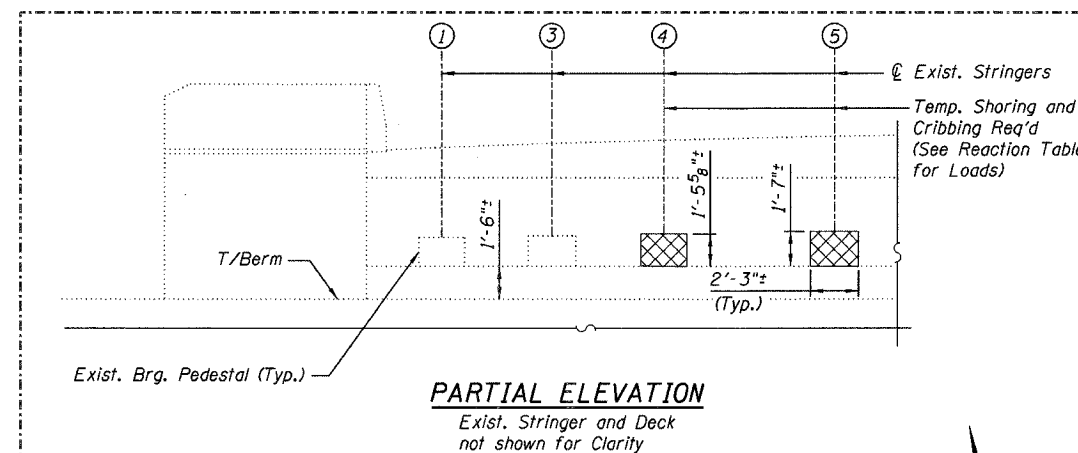
	Concrete Removal
	Structural Repair of Concrete



BAR BEND DETAILS

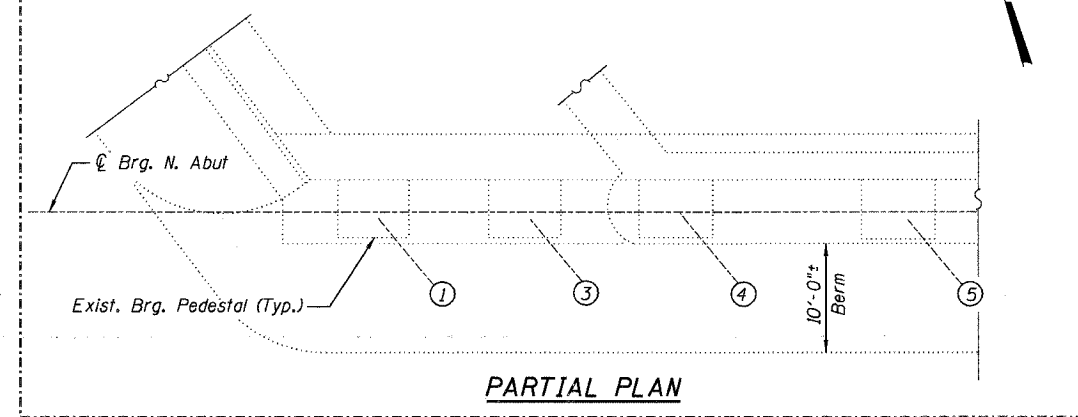


BAR BEND DETAILS



PARTIAL ELEVATION

Exist. Stringer and Deck not shown for Clarity



PARTIAL PLAN

T:\2298\struct\dgn\0107\COM06.dgn