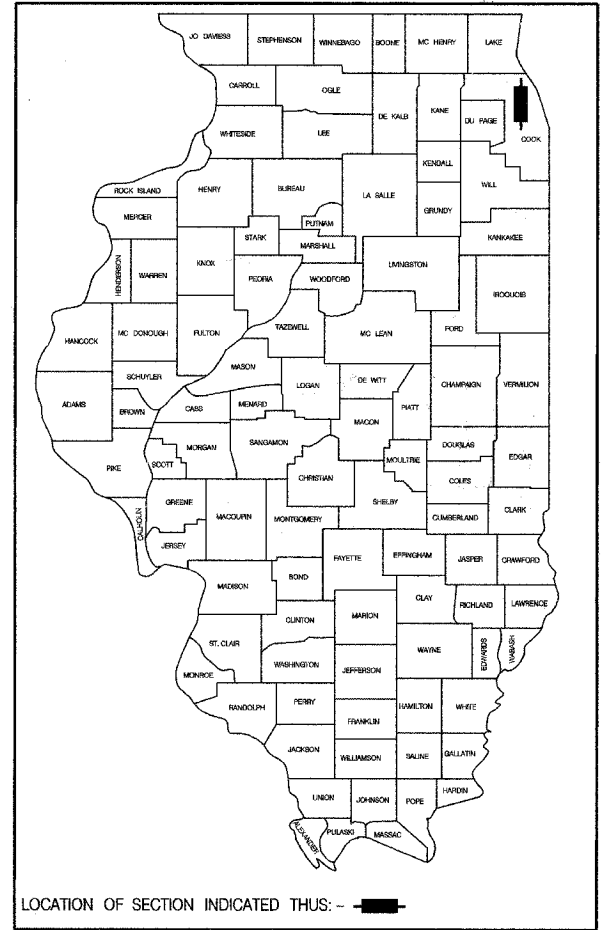


F.A.I. RTE.	SECTION	COUNTY	TOTAL SHEETS	SHEET NO.
94	2006-043 RS	COOK	135	1
D-91-174-03			731	166

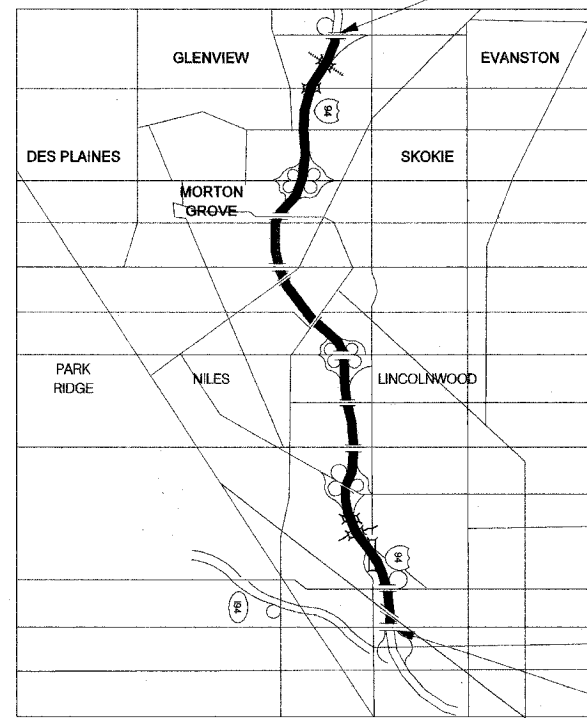
STATE OF ILLINOIS  
 DEPARTMENT OF TRANSPORTATION  
 DIVISION OF HIGHWAYS  
**PROPOSED  
 HIGHWAY PLANS**

F.A.I. 94 (INTERSTATE 94)  
 SECTION 2006-043 RS  
 LAWRENCE AVENUE TO OLD ORCHARD, ROAD  
 RESURFACING, BRIDGE REPAIR  
 AND BRIDGE DECK OVERLAY  
 COOK COUNTY  
 C-91-209-04  
**PROJECT: IM-094-2(244)042**



FOR INDEX OF SHEETS, SEE SHEET NO. 2  
 FOR STATION EQUATIONS, SEE SHEET NO. 3  
 ADT = 170,000 (2005)  
 POSTED SPEED LIMIT = 55 M.P.H.

THE PROJECT IS LOCATED  
 WITHIN THE VILLAGES OF  
 SKOKIE, MORTON GROVE,  
 NILES, LINCOLNWOOD  
 AND THE CITY OF CHICAGO.



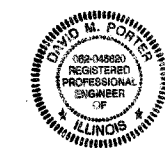
PROJECT ENDS  
 STA. 297+00



PROJECT BEGINS  
 STA. 81+06 S



*Richard W. Allen* 5/15/07  
 EXPIRES 11/30/2008



*David M. Porter* 5/15/07  
 EXPIRES 11/30/2007

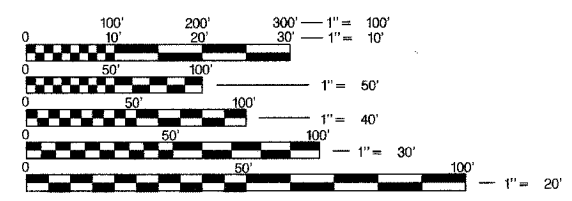
STATE OF ILLINOIS  
 DEPARTMENT OF TRANSPORTATION  
 DIVISION OF HIGHWAYS

SUBMITTED May 17 20 07

*Diane O'Keefe*  
 DEPUTY DIRECTOR OF HIGHWAYS, REGION ENGINEER

June 29 20 07  
*Eric E. Haral*  
 INTERIM ENGINEER OF DESIGN AND ENVIRONMENT

June 29 20 07  
*Milton R. Sore* P.E.  
 DIRECTOR OF HIGHWAYS, CHIEF ENGINEER



FULL SIZE PLANS HAVE BEEN PREPARED USING STANDARD  
 ENGINEERING SCALES. REDUCED SIZED PLANS WILL NOT  
 CONFORM TO STANDARD SCALES. IN MAKING MEASUREMENTS  
 ON REDUCED PLANS, THE ABOVE SCALES MAY BE USED.

J.U.L.I.E.  
 JOINT UTILITY LOCATION INFORMATION FOR EXCAVATION  
 1-800-892-0123

CONTRACT NO. 62747

GROSS LENGTH OF PROJECT = 37,806 LINEAL FEET = 7.16 MILES  
 NET LENGTH OF PROJECT = 37,806 LINEAL FEET = 7.16 MILES

PRINTED BY THE AUTHORITY  
 OF THE STATE OF ILLINOIS

DISTRICT ONE - IDOT PROJECT MANAGER: KEN ENG (847) 705-4247