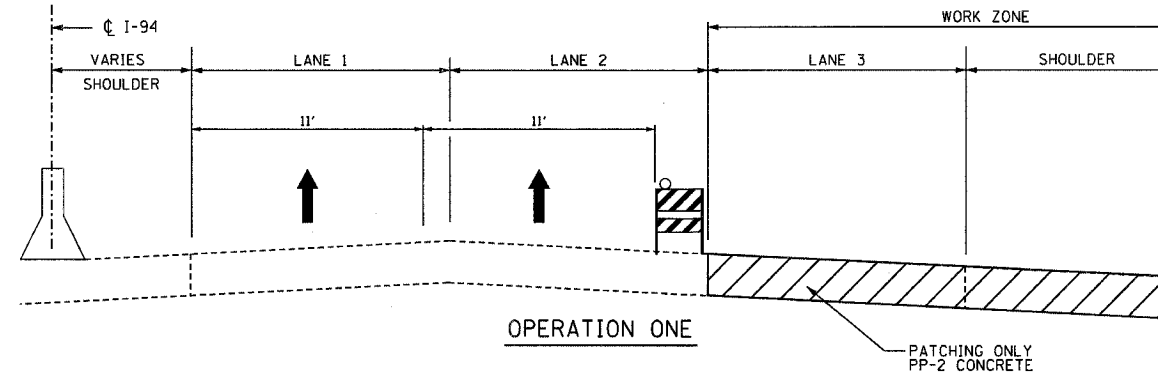


# STAGE I: 2007

## WEEKDAY OPERATIONS:

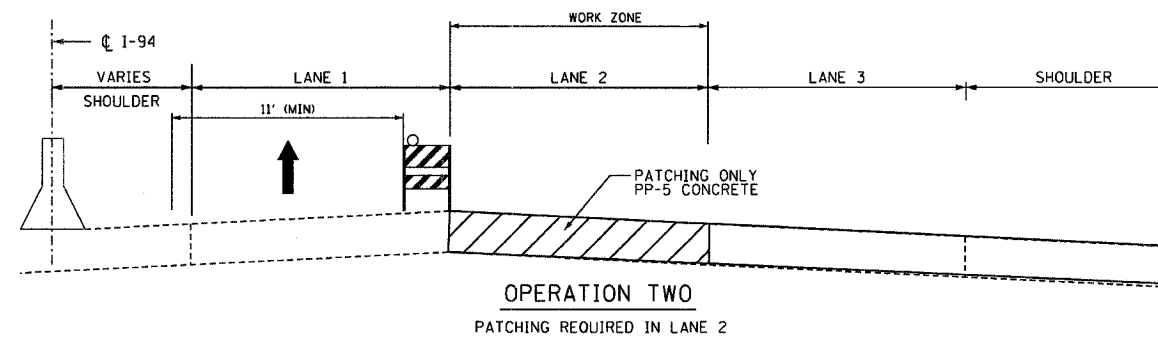
### WORK SEQUENCE:

- APPLY TEMPORARY PAVEMENT MARKING LANES 1 & 2
- (LANE CLOSURES ALLOWED AS DETAILED IN THE SPECIAL PROVISIONS)
- COMPLETE PATCH OPERATIONS LANE 3 AND OUTSIDE SHOULDER WHERE SPECIFIED
- COMPLETE JOINT REPAIR BETWEEN LANE 3 & SHOULDER AT LOCATIONS SPECIFIED IN SCHEDULE
- REMOVE TEMPORARY PAVEMENT MARKING LANES 1 & 2



## WEEKEND OPERATIONS:

- APPLY TEMPORARY PAVEMENT MARKING LANE 1
- (LANE CLOSURES ALLOWED AS DETAILED IN THE SPECIAL PROVISIONS)
- COMPLETE PATCH OPERATIONS LANE 2 USING PP-5 CONCRETE
- REMOVE TEMPORARY PAVEMENT MARKING LANES 1



PLOT DATE = 6/18/2007  
 FILE NAME = \*FILEL\*  
 PLOT SCALE = \*SCALE\*  
 USER NAME = \*DEFAULT\*

REVISIONS	
NAME	DATE

ILLINOIS DEPARTMENT OF TRANSPORTATION  
 N.T.S.  
 TRAFFIC CONTROL  
 AND PROTECTION  
 F.A.I. 94 EDENS EXPRESSWAY  
 TYPICAL SECTIONS PER SEGMENT

SCALE: \_\_\_\_\_ DRAWN BY \_\_\_\_\_  
 DATE JUNE 2007 CHECKED BY \_\_\_\_\_