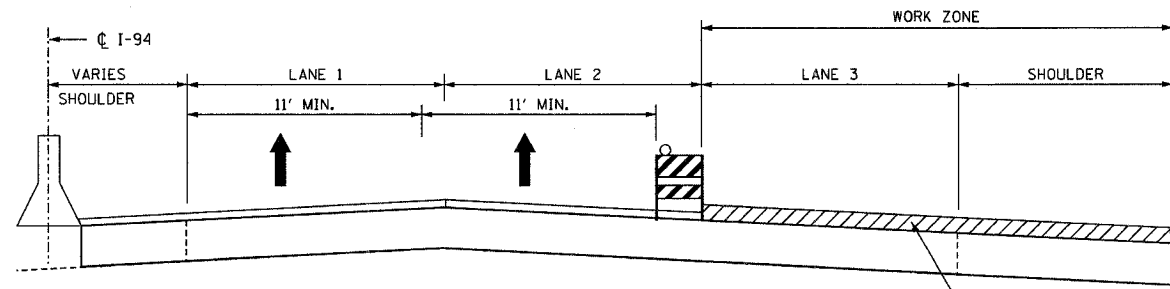


CONTRACT NO. 62747				
F.A.I. RTE.	SECTION	COUNTY	TOTAL SHEETS	SHEET NO.
94	2006-043 RS	COOK	135	16
STA.		TO STA.		
FED. ROAD DIST. NO. 1		ILLINOIS FED. AID PROJECT		

STAGE III: 2008

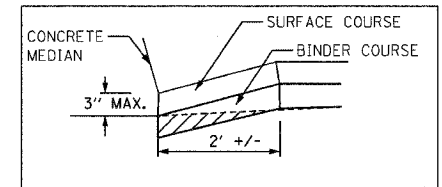
WORK SEQUENCE:

- APPLY TEMPORARY PAVEMENT MARKING LANES 1 & 2
- MILL SHOULDER IN CURB AND GUTTER AREAS
- ADJUST STRUCTURE FRAMES AND LIDS
- APPLY LEVELING BINDER, BINDER COURSE & SURFACE COURSE
- INSTALL RUMBLE STRIPS
- APPLY PERMANENT PAVEMENT MARKING FOR OUTSIDE EOP AND SHOULDER

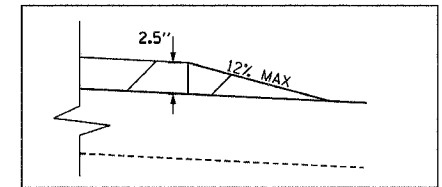


DAY OPERATION

LEVELING BINDER, BINDER COURSE, AND SURFACE COURSE



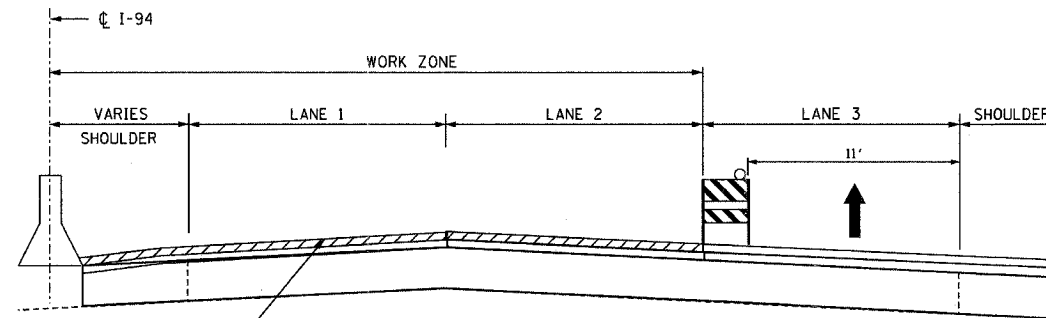
MEDIAN BARRIER DETAIL



WEDGE DETAIL

STAGE IV: 2008

- APPLY SURFACE COURSE
- INSTALL RUMBLE STRIPS
- APPLY PAVEMENT MARKING
- APPLY RAISED REFLECTIVE PAVEMENT MARKERS



NIGHT OPERATION

NOTE:
CONTRACTOR TO FOLLOW STANDARD SPECIFICATION 603.07 "PROTECTION UNDER TRAFFIC" FOR FRAME AND LID ADJUSTMENT BEFORE LANE 1 CAN BE OPENED TO TRAFFIC

PLOT DATE = 6/18/2007
PLOT SCALE = #SCALE#
USER NAME = default

REVISIONS		ILLINOIS DEPARTMENT OF TRANSPORTATION TRAFFIC CONTROL AND PROTECTION F.A.I. 94 EDENS EXPRESSWAY TYPICAL SECTIONS PER SEGMENT
NAME	DATE	
		SCALE: N.T.S. DRAWN BY DATE: JUNE 2007 CHECKED BY

Edens I 94 Resurfacing Project