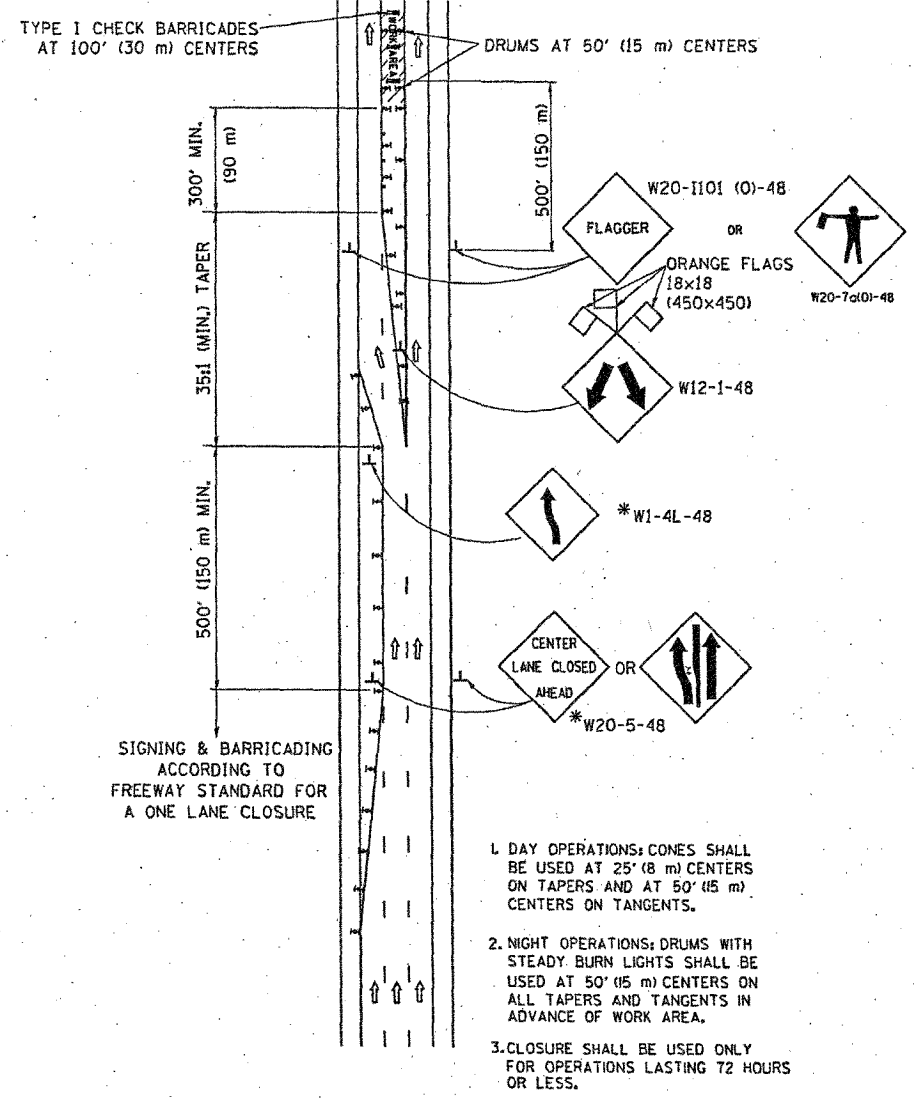
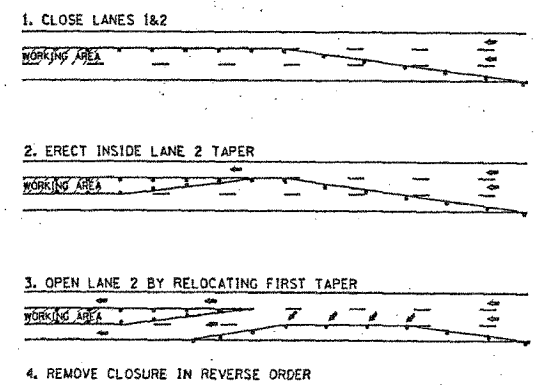


CONTRACT NO. 62747				
F.A. RTE.	SECTION	COUNTY	TOTAL SHEETS	SHEET NO.
94	2006-048 BS	COOK	185	25
STA.	TO STA.			
FED. ROAD DIST. NO. 1 ILLINOIS FED. AID PROJECT				

CENTER LANE CLOSURE

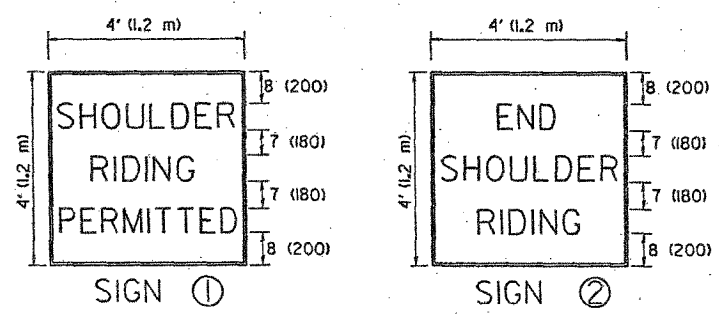
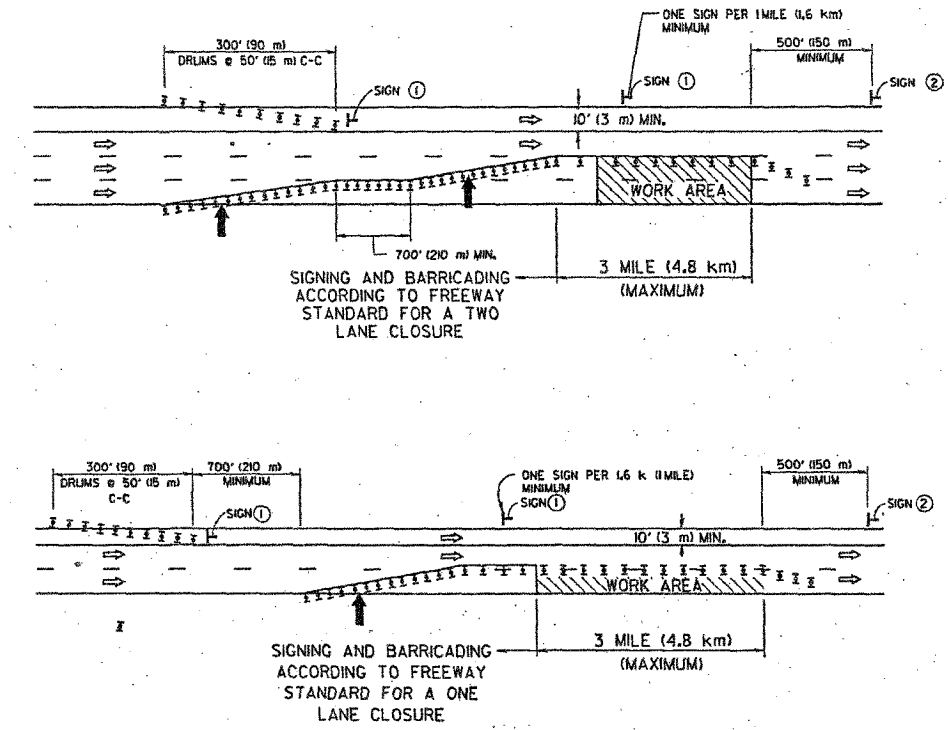


INSTALLATION SEQUENCE



SHOULDER LANE

NOTE: CLOSURE SHALL BE USED ONLY FOR OPERATIONS LASTING 72 HOURS OR LESS.



- SYMBOLS**
- ↑ DIRECTION OF TRAFFIC
 - ➔ ARROWBOARD
 - ▨ WORK AREA
 - ◇ SIGN WITH 18x18 (450x450) ORANGE FLAGS ATTACHED *
 - ⊢ SIGN ON PORTABLE OR PERMANENT SUPPORT *
 - ≡ TYPE II BARRICADE, DRUM OR VERTICAL BARRICADE WITH MONO-DIRECTIONAL STEADY BURN LIGHT

ALL DIMENSIONS ARE IN INCHES (MILLIMETERS) UNLESS OTHERWISE SHOWN

* ALL SIGNS SHALL BE MOUNTED AT A MINIMUM HEIGHT OF 5' (1.5 m).

REVISIONS		ILLINOIS DEPARTMENT OF TRANSPORTATION TRAFFIC CONTROL DETAILS FOR FREEWAY CENTER LANE CLOSURE SHOULDER LANE
NAME	DATE	
PRIOR DETAILS ON TC-9 - JAF	4/03	SCALE: NONE DATE: 1/4/2007 DRAWN BY R.H. CHECKED BY TC-25 REVISION DATE: 01/01/07
SPB	1/07	

PLOT DATE: 1/4/2007
 FILE NAME: s:\p\2006\2006-048 BS\TC-25.dwg
 PLOT SCALE: 1/4" = 1'-0"
 USER: R.H.