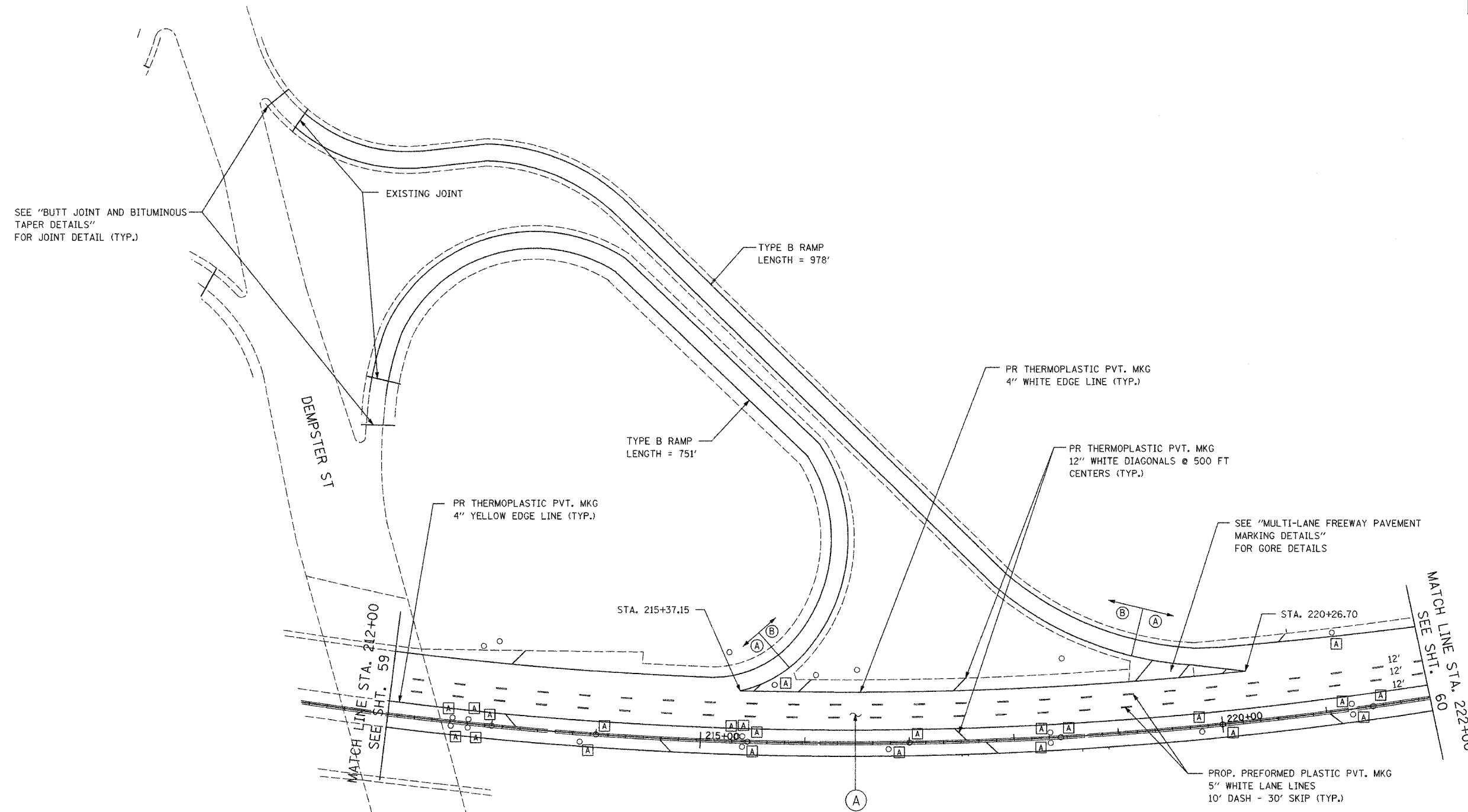


F.A.I. RTE.	SECTION	COUNTY	TOTAL SHEETS	SHEET NO.
94	2006-043 RS	COOK	135	58
STA. 212+00		TO STA. 222+00		
FED. ROAD DIST. NO. 7		ILLINOIS FED. AID PROJECT		



SEE "BUTT JOINT AND BITUMINOUS TAPER DETAILS" FOR JOINT DETAIL (TYP.)

EXISTING JOINT

TYPE B RAMP LENGTH = 978'

TYPE B RAMP LENGTH = 751'

PR THERMOPLASTIC PVT. MKG 4" YELLOW EDGE LINE (TYP.)

PR THERMOPLASTIC PVT. MKG 4" WHITE EDGE LINE (TYP.)

PR THERMOPLASTIC PVT. MKG 12" WHITE DIAGONALS @ 500 FT CENTERS (TYP.)

SEE "MULTI-LANE FREEWAY PAVEMENT MARKING DETAILS" FOR GORE DETAILS

DEMPSTER ST

STA. 215+37.15

STA. 220+26.70

MATCH LINE STA. 212+00 SEE SHT. 59

MATCH LINE STA. 222+00 SEE SHT. 60

PROP. PREFORMED PLASTIC PVT. MKG 5" WHITE LANE LINES 10' DASH - 30' SKIP (TYP.)

**LEGEND**

- (A) PROPOSED MAINLINE RESURFACING
  - POLYMERIZED HMA SURFACE, SMA, N80 1-3/4"
  - POLYMERIZED HMA BINDER, SMA, N80 1-3/4"
- PROPOSED MAINLINE SHOULDER RESURFACING
  - HMA SURFACE, MIX D, N70 (IL 9.5 mm) 1-3/4"
  - HMA BINDER, IL-19, N70, VARIES 2-1/4" TO 2-3/4"
- (B) PROPOSED RAMP AND RAMP SHOULDER RESURFACING
  - HMA SURFACE, MIX D, N70 (IL 9.5mm) 1-3/4"
  - HMA BINDER, IL-19, N70, VARIES 2-1/4" TO 2-3/4"
- (A) FRAMES AND GRATES TO BE ADJUSTED

NOTE:  
SEE "MULTI-LANE FREEWAY PAVEMENT MARKING DETAILS" FOR PLACEMENT & TYPE OF RAISED REFLECTIVE PAVEMENT MARKERS (TYP.)

NOTE:  
SEE SHEET 23 FOR NORTHBOUND

REVISIONS	
NAME	DATE

ILLINOIS DEPARTMENT OF TRANSPORTATION  
 PROPOSED ROADWAY PLANS  
 F.A.I. 94 (I-94)  
 STA 212+00 TO STA 222+00 SB

SCALE: DATE JAN 2007 DRAWN BY CHECKED BY

PLOT DATE = 5/21/2007  
 PLOT SCALE = AS SHOWN  
 USER NAME = 08790JF