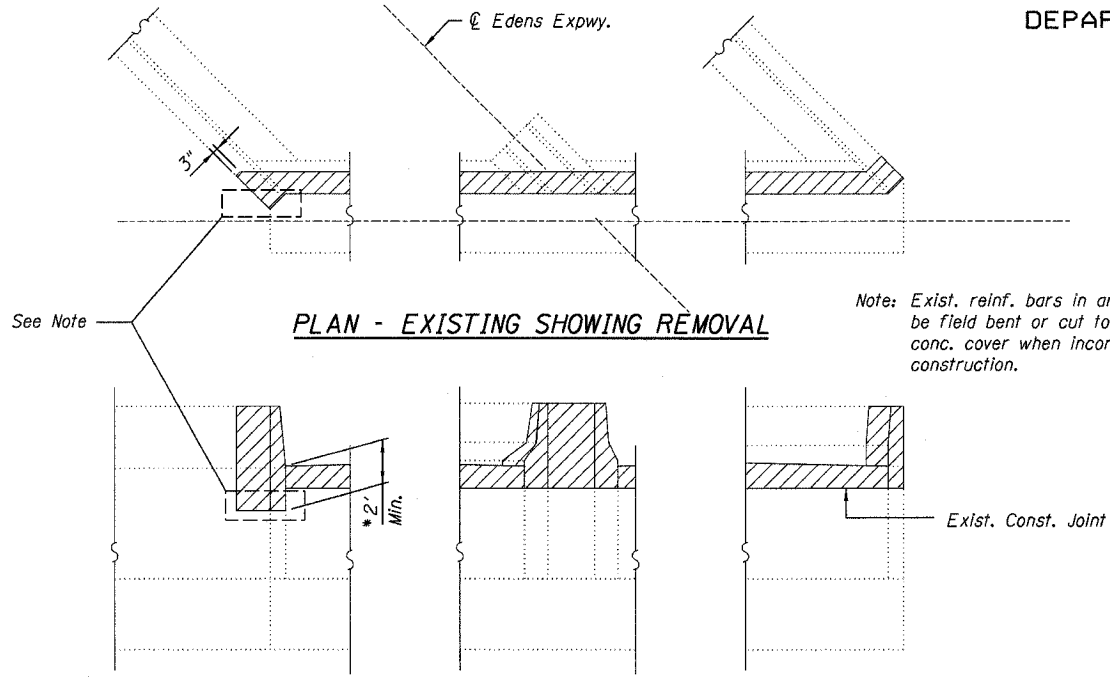


STATE OF ILLINOIS
DEPARTMENT OF TRANSPORTATION

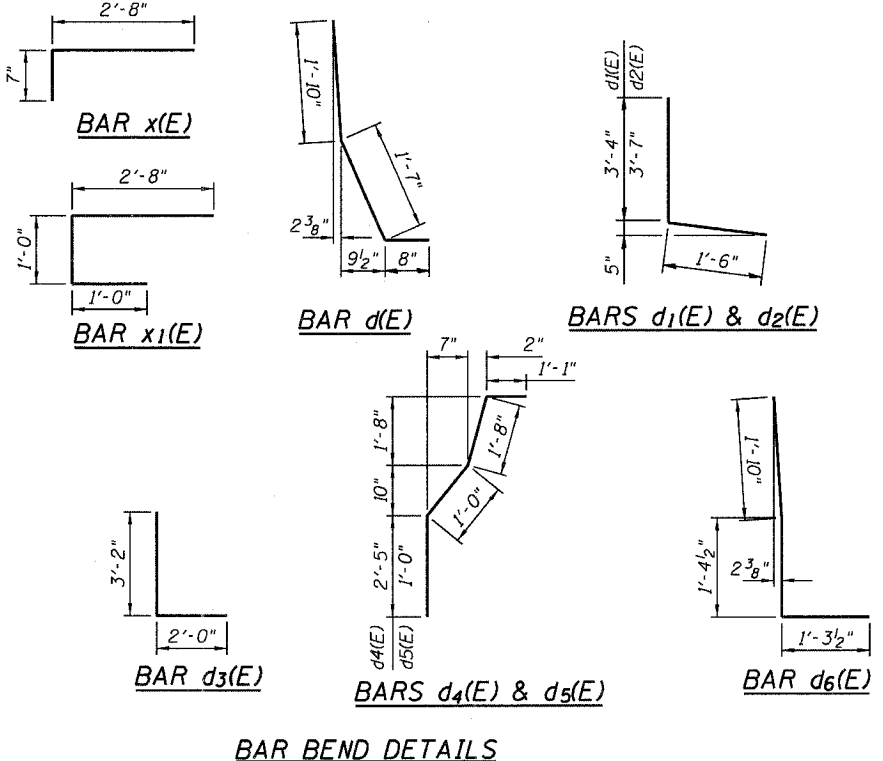
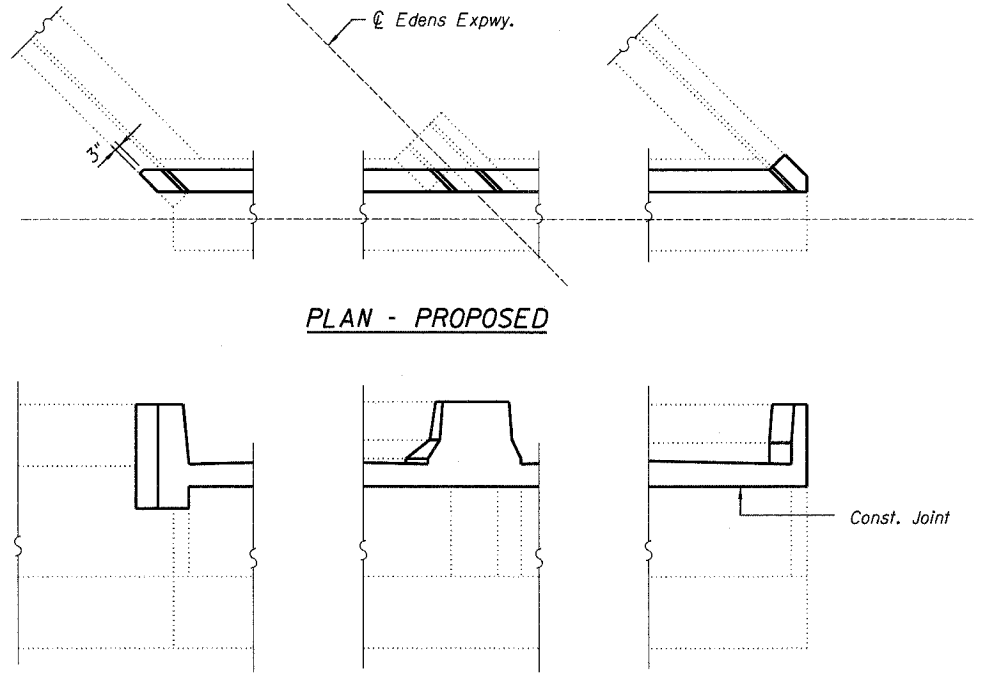
ROUTE NO.	SECTION	COUNTY	SHEET	NO.
F.A.I. 94	2006-043 RS	COOK	135	104a
FED. ROAD DIST. NO. 7		ILLINOIS	FED. AID PROJECT	

Contract # 62747



Note: Exist. reinf. bars in areas indicated shall be field bent or cut to provide 1/2" clear conc. cover when incorporated into new construction.

* Verify clearance is adequate for proposed bridge overhang.



SUPERSTRUCTURE BILL OF MATERIAL

Bar	No.	Size	Length	Shape
a(E)	12	#6	44'-10"	—
a1(E)	50	#5	44'-10"	—
a2(E)	12	#6	33'-7"	—
a3(E)	50	#5	33'-7"	—
d(E)	20	#5	4'-1"	⌋
d1(E)	10	#4	5'-3"	L
d2(E)	10	#4	5'-6"	L
d3(E)	20	#4	5'-2"	L
d4(E)	4	#5	6'-2"	⌋
d5(E)	4	#5	4'-9"	⌋
d6(E)	20	#5	4'-6"	⌋
x(E)	90	#5	3'-3"	—
x1(E)	90	#5	4'-8"	—
x2(E)	54	#5	5'-3"	—
Concrete Removal			Cu. Yd.	63.8
Concrete Superstructure			Cu. Yd.	71.8
Bridge Deck Grooving			Sq. Yd.	5,951
Protective Coat			Sq. Yd.	156
Reinforcement Bars, Epoxy Coated			Pound	6,910
Modular Expansion Joint - Swivel, 6"			Foot	152
Silicone Bridge Joint Sealer, 2"			Foot	470

NOTE
Reinforcement bars designated (E) shall be epoxy coated.

REINFORCING BAR DETAILS & SUPERSTRUCTURE BILL OF MATERIAL
F.A.I. 94/ (EDENS EXPRESSWAY)
OVER U.P.R.R.
COOK COUNTY
STATION 277+05.05
STRUCTURE NO. 016-0103 & 016-0104

DESIGNED -	JSD
CHECKED -	AMK
DRAWN -	JSD
CHECKED -	AMK

LOCHNER
H.W. LOCHNER, INC., CHICAGO, ILLINOIS

LEGEND
Concrete Removal

T:\2298\struct\dgn\0103COM06.dgn