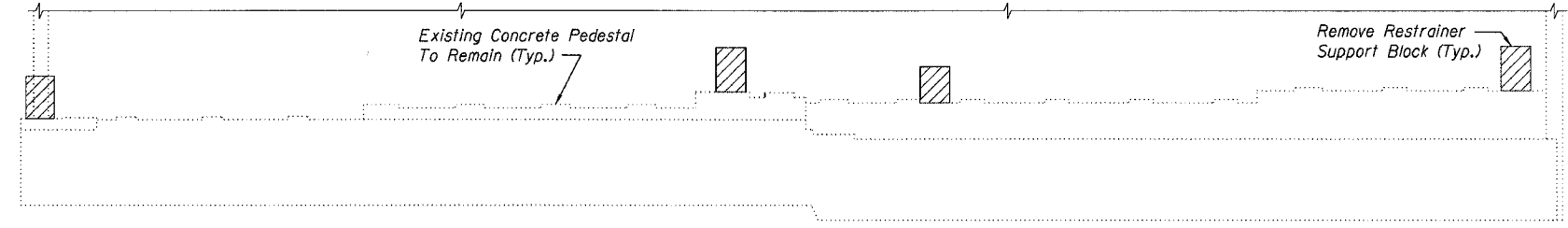


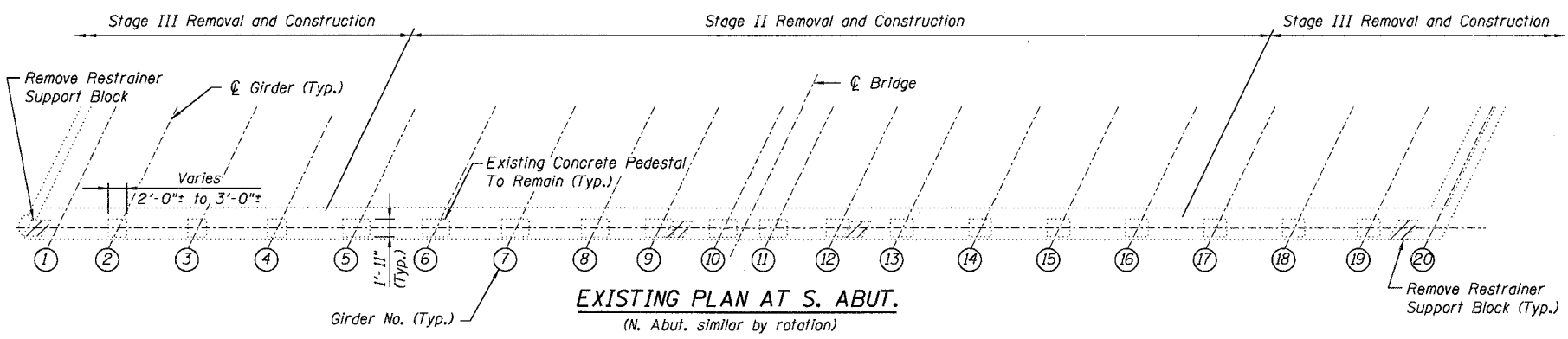
STATE OF ILLINOIS
DEPARTMENT OF TRANSPORTATION

ROUTE NO.	SECTION	COUNTY	SHEET NO.	TOTAL SHEETS
F.A.I. 94	2006-043 RS	COOK	135	111
FED. ROAD DIST. NO. 7		ILLINOIS	FED. AID PROJECT	

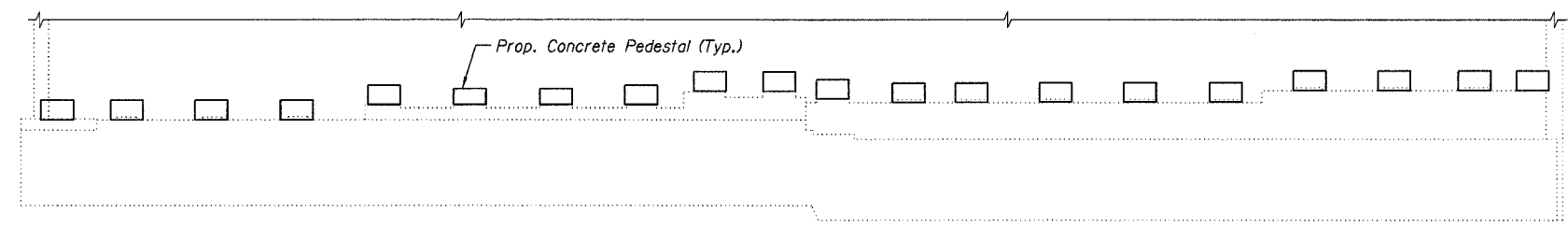
Contract # 62747



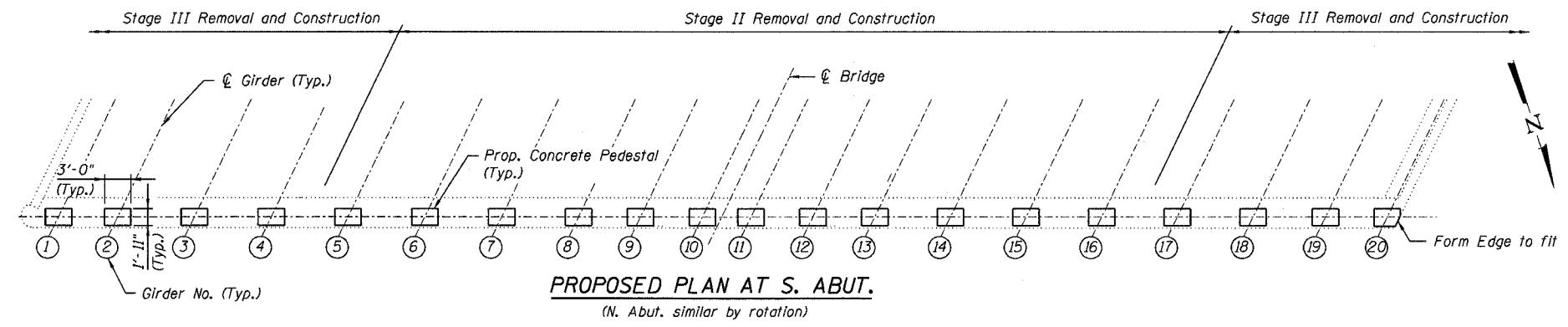
EXISTING ELEVATION AT S. ABUT.
(N. Abut. similar by rotation)



EXISTING PLAN AT S. ABUT.
(N. Abut. similar by rotation)



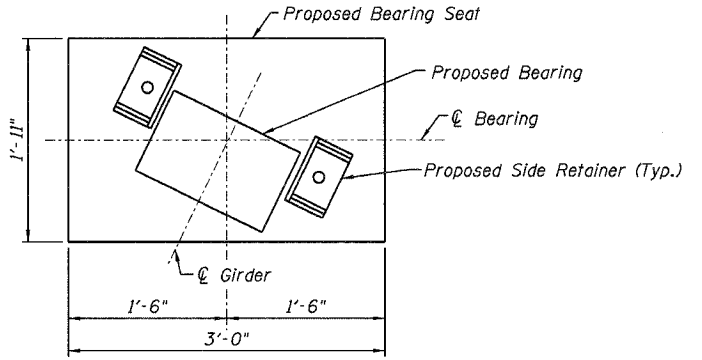
PROPOSED ELEVATION AT S. ABUT.
(N. Abut. similar by rotation)



PROPOSED PLAN AT S. ABUT.
(N. Abut. similar by rotation)

REACTION TABLE

		Abutment
R_p	(k)	24.4
R_k	(k)	35.8
Imp	(k)	9.9
R_{Total}	(k)	70.2



CONCRETE PEDESTAL PLAN

NOTES

1. See Sheet No. 110 for proposed bearing details.
2. The Contractor shall field verify all existing dimensions.
3. Work this sheet with Sheet No. 112
4. For Bill of Material, see Sheet No. 112

LEGEND



DESIGNED -	JSD
CHECKED -	AMK
DRAWN -	JSD
CHECKED -	AMK

LOCHNER
H.W. LOCHNER, INC., CHICAGO, ILLINOIS

BEARING DETAILS II
F.A.I. 94/ (EDENS EXPRESSWAY)
OVER GOLF ROAD
COOK COUNTY
STATION 265+65.22
STRUCTURE NO. 016-0105

T:\2298\struct\dgn\0105BRC01.dgn