

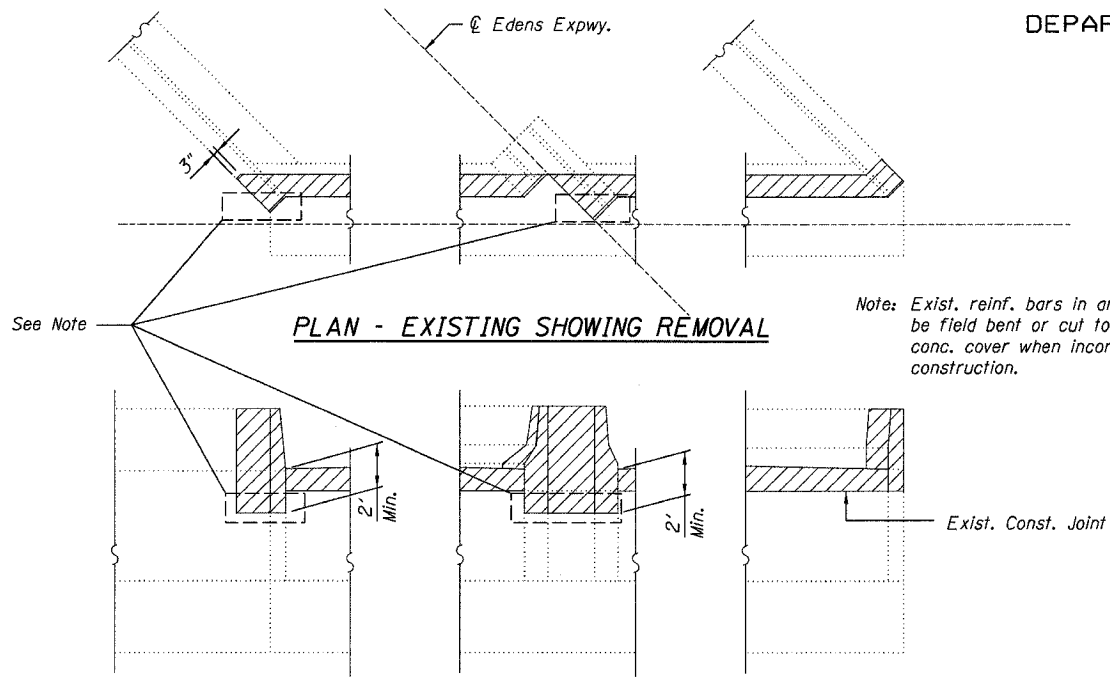
STATE OF ILLINOIS
DEPARTMENT OF TRANSPORTATION

| | | | | |
|-----------------------|-------------|-------------------|--------------|-------|
| ROUTE NO. | SECTION | COUNTY | TOTAL SHEETS | SHEET |
| F.A.I. 94 | 2006-043 RS | COOK | 135 | 122a |
| FED. ROAD DIST. NO. 7 | ILLINOIS | FED. AID PROJECT- | | |

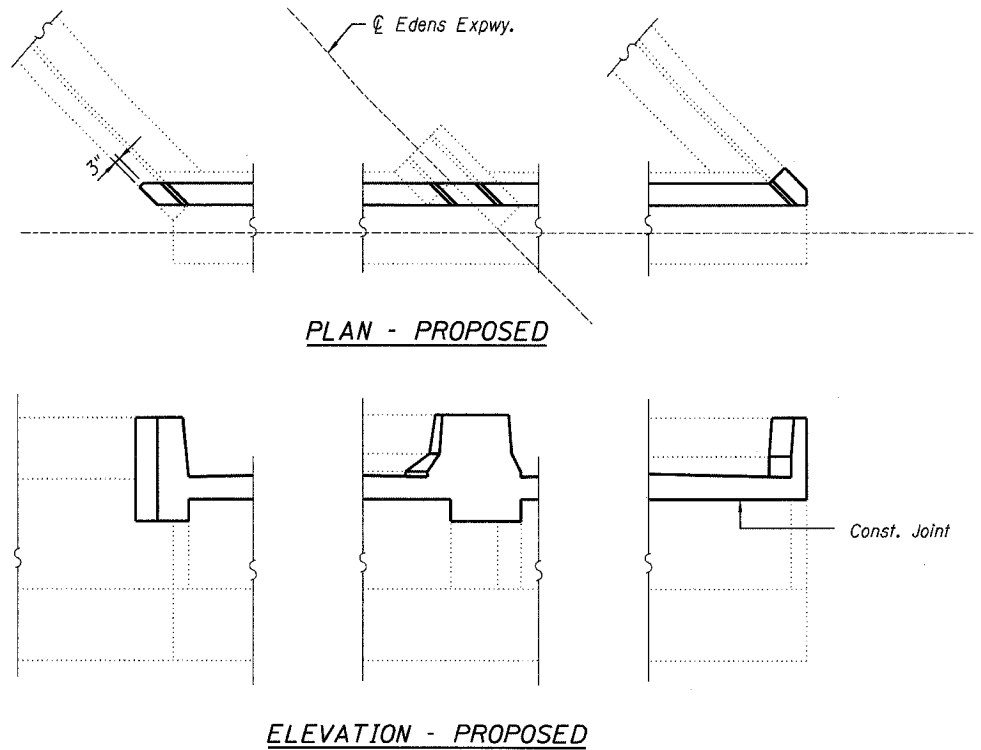
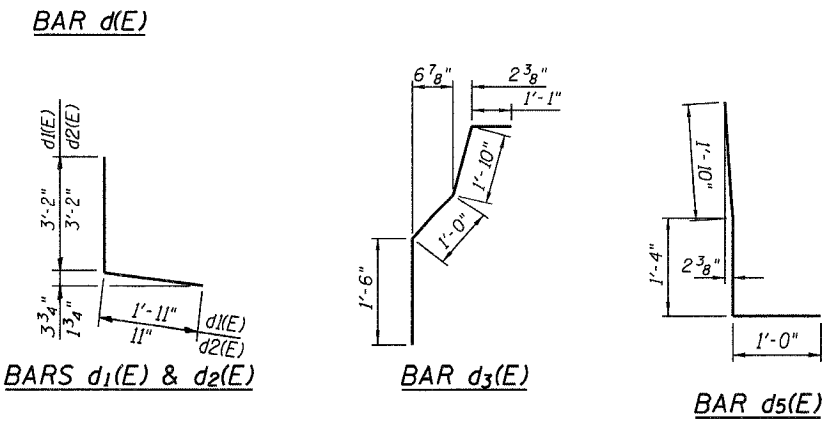
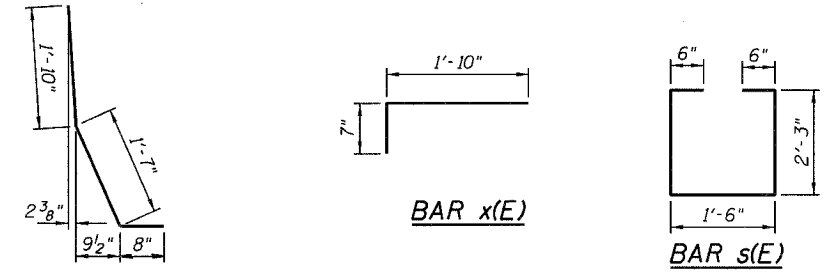
Contract # 62747

**SUPERSTRUCTURE
BILL OF MATERIAL**

| Bar | No. | Size | Length | Shape |
|----------------------------------|-----|------|---------|-------|
| a(E) | 12 | #6 | 35'-2" | — |
| a2(E) | 40 | #5 | 35'-2" | — |
| a3(E) | 6 | #6 | 34'-4" | — |
| a4(E) | 20 | #5 | 34'-4" | — |
| a5(E) | 3 | #6 | 36'-1" | — |
| a6(E) | 10 | #5 | 36'-1" | — |
| a7(E) | 3 | #6 | 54'-1" | — |
| a7(E) | 10 | #5 | 54'-1" | — |
| d(E) | 12 | #5 | 4'-1" | ┌ |
| d1(E) | 12 | #4 | 5'-1" | ┌ |
| d2(E) | 12 | #4 | 4'-1" | ┌ |
| d3(E) | 8 | #5 | 5'-5" | ┌ |
| d4(E) | 4 | #4 | 4'-0" | — |
| d5(E) | 12 | #5 | 4'-2" | ┌ |
| s(E) | 123 | #4 | 4'-9" | □ |
| x(E) | 233 | #5 | 2'-5" | — |
| x1(E) | 12 | #5 | 34'-10" | — |
| x2(E) | 6 | #5 | 29'-0" | — |
| x3(E) | 6 | #5 | 48'-0" | — |
| Concrete Removal | | | Cu. Yd. | 63.7 |
| Concrete Superstructure | | | Cu. Yd. | 69.2 |
| Bridge Deck Grooving | | | Sq. Yd. | 3,105 |
| Protective Coat | | | Sq. Yd. | 120 |
| Reinforcement Bars, Epoxy Coated | | | Pound | 6,600 |
| Silicone Bridge Joint Sealer, 2" | | | Foot | 260 |



Note: Exist. reinf. bars in areas indicated shall be field bent or cut to provide 1/2" clear conc. cover when incorporated into new construction.



LEGEND
Concrete Removal

NOTE
Reinforcement bars designated (E) shall be epoxy coated.

**REINFORCING BAR DETAILS &
SUPERSTRUCTURE BILL OF MATERIAL
F.A.I. 94/ (EDENS EXPRESSWAY)
OVER NORTH BRANCH
COOK COUNTY
STATION 23+63.00
STRUCTURE NO. 016-0107**

| | |
|------------|-----|
| DESIGNED - | JSD |
| CHECKED - | AMK |
| DRAWN - | JSD |
| CHECKED - | AMK |

LOCHNER
H.W. LOCHNER, INC., CHICAGO, ILLINOIS

T:\2298\struct\dgn\0107C0M06.dgn