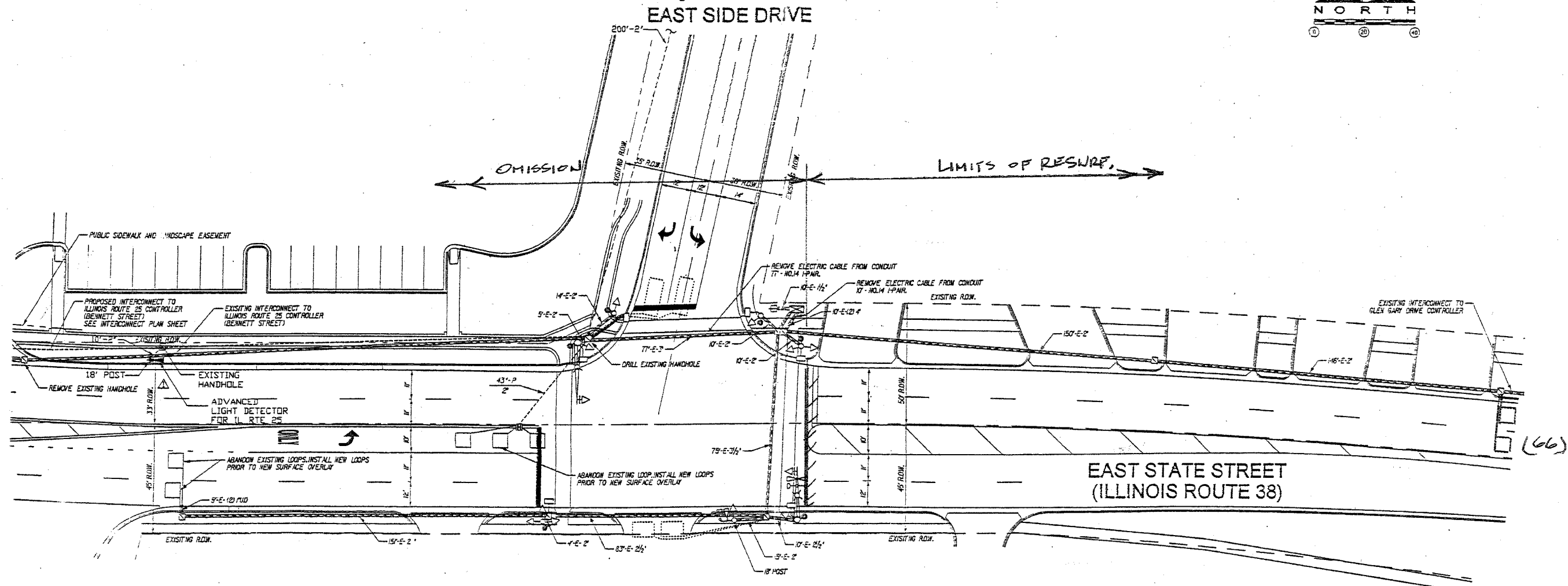


| | | | | |
|---------------------|----------|-----------------|--------------|-----------|
| MAP NO. | SECTION | COUNTY | TOTAL SHEETS | SHEET NO. |
| 347 (LWBLY)RS-2 | | KANE | 18 | 7 |
| STA. | TO STA. | | | |
| FED. ROAD DIST NO 7 | ILLINOIS | FED AID PROJECT | | |



TRAFFIC SIGNAL LEGEND

| | PROPOSED | EXISTING | | PROPOSED | EXISTING |
|--------------------------------------|----------|----------|--|----------|----------|
| CONTROLLER | [Symbol] | [Symbol] | G.S. CONDUIT IN TRENCH OR PUSHED | [Symbol] | [Symbol] |
| SERVICE INSTALLATION | [Symbol] | [Symbol] | PEDESTRIAN PUSHBUTTON DETECTOR | [Symbol] | [Symbol] |
| SIGNAL HEAD | [Symbol] | [Symbol] | DETECTOR LOOP | [Symbol] | [Symbol] |
| SIGNAL HEAD WITH BACKPLATE | [Symbol] | [Symbol] | CAST IRON JUNCTION BOX | [Symbol] | [Symbol] |
| SIGNAL HEAD, PEDESTRIAN | [Symbol] | [Symbol] | EMERGENCY VEHICLE SYSTEM DETECTOR | [Symbol] | [Symbol] |
| SIGNAL POST | [Symbol] | [Symbol] | CONFIRMATION BEACON | [Symbol] | [Symbol] |
| MAST ARM ASSEMBLY AND POLE, STEEL | [Symbol] | [Symbol] | SIGNAL HEAD OPTICALLY PROGRAMMED | [Symbol] | [Symbol] |
| MAST ARM ASSEMBLY AND POLE, ALUMINUM | [Symbol] | [Symbol] | CONDUIT SPLICE | [Symbol] | [Symbol] |
| COMMON TRENCH | [Symbol] | [Symbol] | WOOD POLE | [Symbol] | [Symbol] |
| UNIT DUCT | [Symbol] | [Symbol] | RACEWAY FOR MAGNETIC DETECTOR, TYPE I OR TYPE II | [Symbol] | [Symbol] |
| HANDHOLE | [Symbol] | [Symbol] | VEHICLE DETECTOR, NON COMPENSATED | [Symbol] | [Symbol] |
| HEAVY DUTY HANDHOLE | [Symbol] | [Symbol] | MAGNETIC TYPE | [Symbol] | [Symbol] |
| DOUBLE HANDHOLE | [Symbol] | [Symbol] | RAILROAD CONTROL CABINET | [Symbol] | [Symbol] |
| | | | STREET LIGHT | [Symbol] | [Symbol] |

NOTE:
 THIS PLAN IS FOR THE PURPOSE OF REPLACING THE DETECTOR LOOPS ONLY. ALL OTHER INFORMATION SHOWN IS NOT RELATED AND WILL BE DISREGARDED.

**REPLACE ALL DETECTOR LOOPS AS SHOWN
 (WITHIN THE RESURFACING LIMITS)**

| CODE NO. | QUANTITY | UNIT | ITEM |
|----------|----------|------|---------------------------|
| 86600600 | 66 | Foot | Detector Loop Replacement |

| REVISIONS | |
|-----------|------|
| NAME | DATE |
| | |
| | |
| | |
| | |

ILLINOIS DEPARTMENT OF TRANSPORTATION
DETECTOR LOOP REPLACEMENT
 ILL. ROUTE 38 @ EAST SIDE DR.
 SCALE: NONE
 DATE: JAN. 2006
 DRAWN BY: JHE
 DESIGNED BY: JHE
 CHECKED BY: DAD