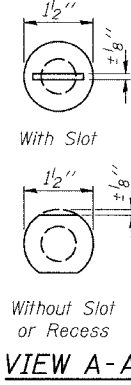
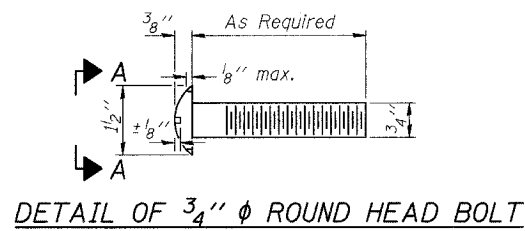


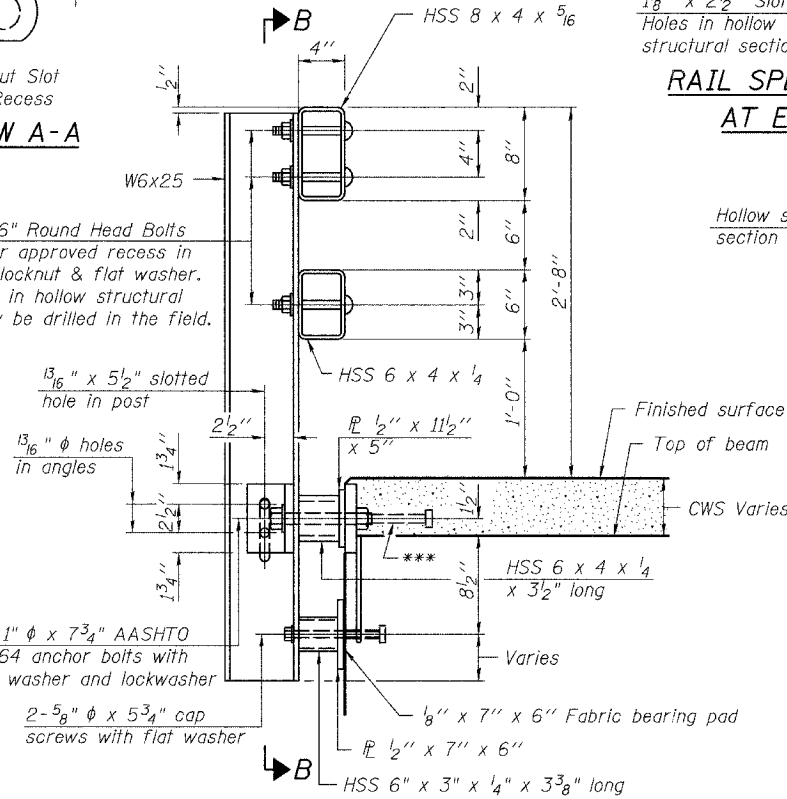
FOR RAIL POST SPACING SEE SH.#5 & #10 OF 13

ROUTE NO.	SEC.	COUNTY	TOTAL SHEETS	SHEET NO.
FAP 22	*	HENRY	34	20
FED. ROAD DIST. NO. 7	ILLINOIS	PROJECT		

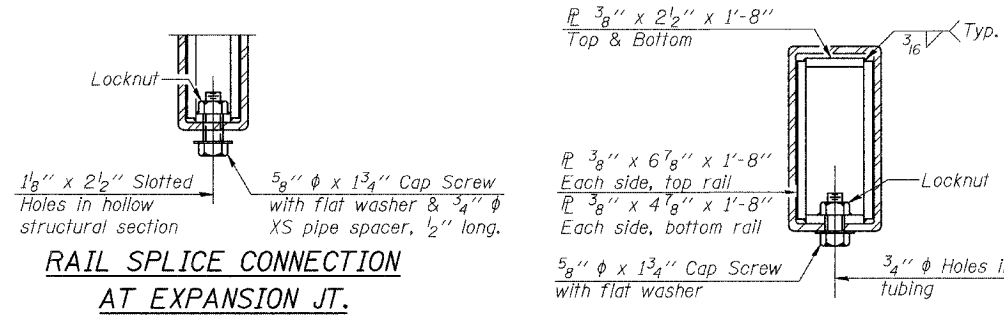
*(125BR-2)D CONTRACT NO. 64D47



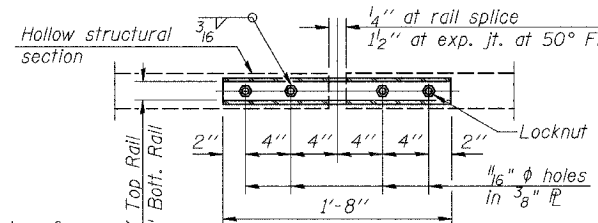
4-3/4" ϕ x 6" Round Head Bolts (With slot or approved recess in head) with locknut & flat washer. 7/8" ϕ holes in hollow structural section may be drilled in the field.



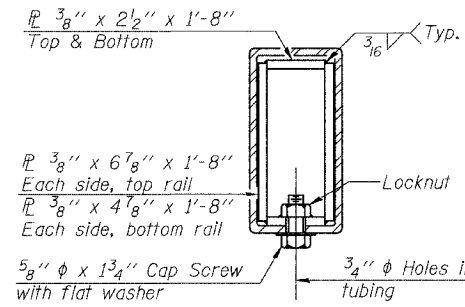
SECTION AT RAIL POST ON STRUCTURE



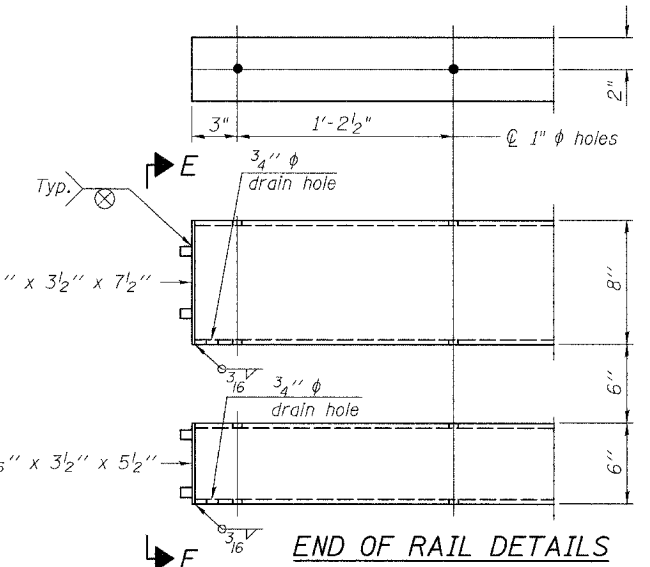
RAIL SPLICE CONNECTION AT EXPANSION JT.



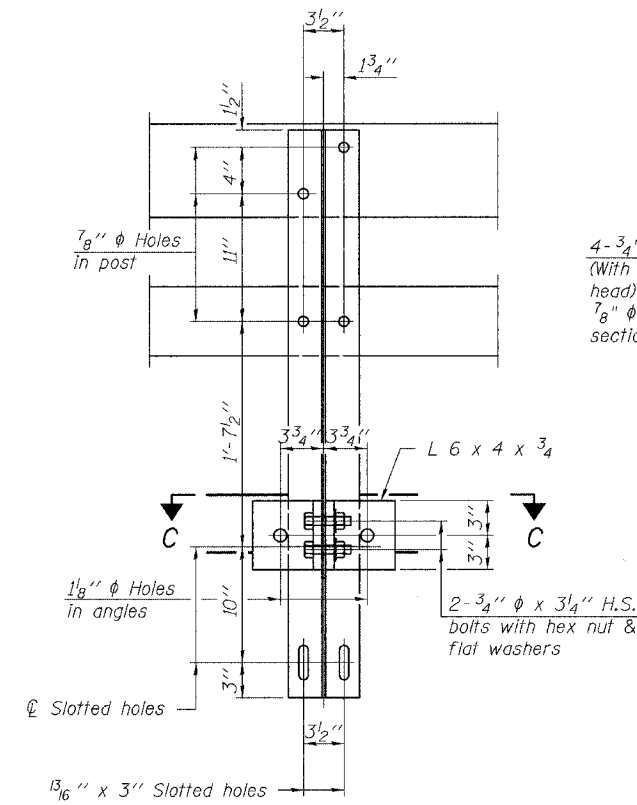
PLAN-BOTT. SPLICE AT TYPICAL



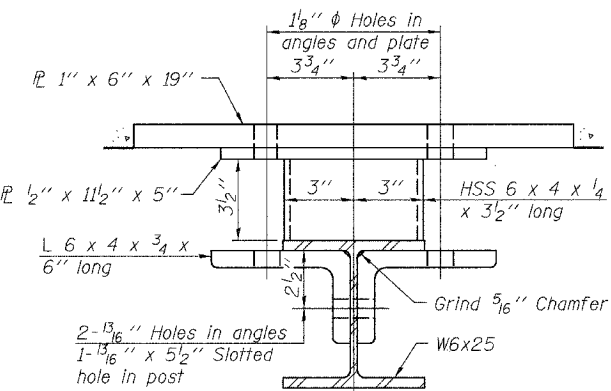
SECTION AT RAIL SPLICE



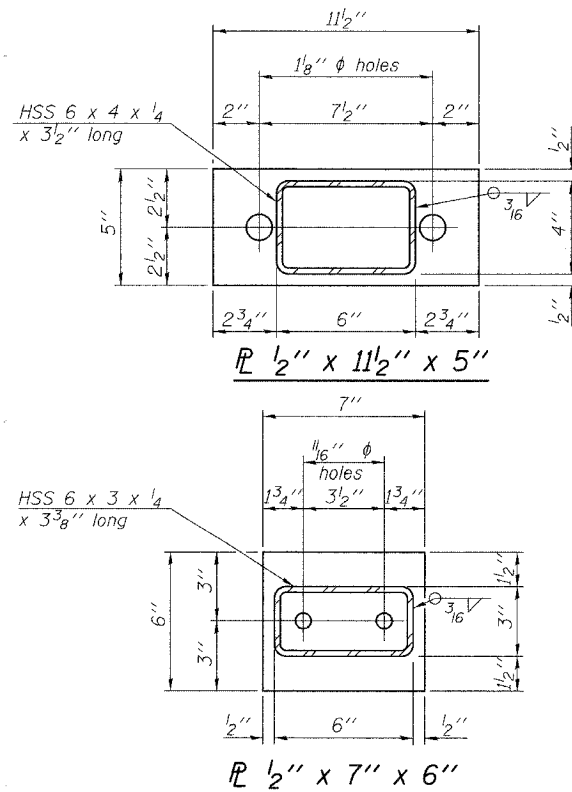
END OF RAIL DETAILS



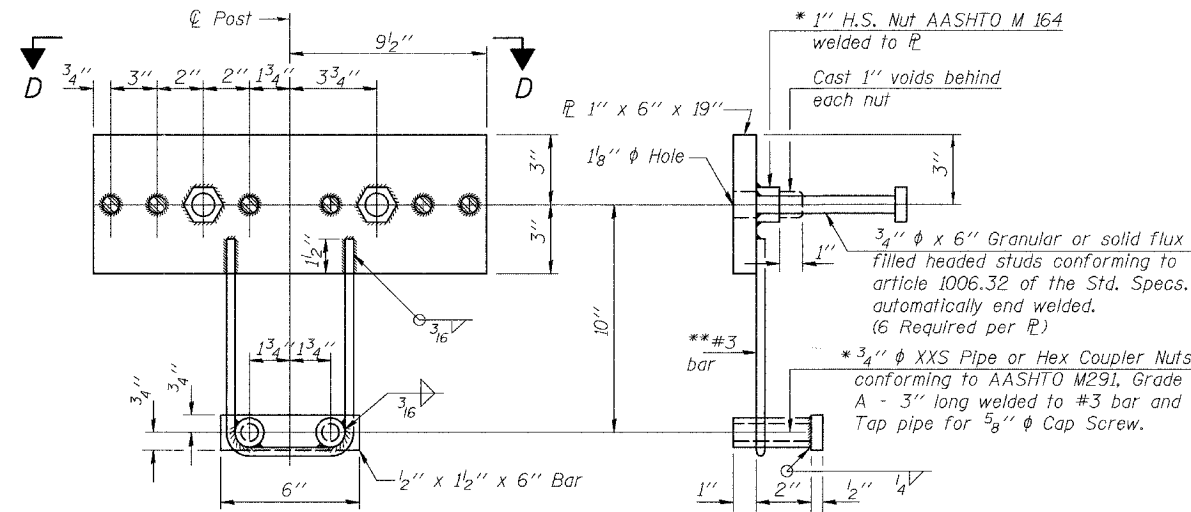
SECTION B-B



SECTION C-C



ANCHOR DEVICE



VIEW D-D

Notes:
 All field drilled holes shall be coated with an approved zinc rich paint before erection.
 For multi-span bridges, sufficient 1/4" x 6" x 1'-2" galvanized steel shims shall be provided to align rail between adjacent spans. Cost included with Steel Railing, Type SM.
 Steel rail elements shall be galvanized according to Article 509.05 of the Standard Specifications.
 *** The studs of the anchor devices shall be placed below the top reinforcement bars and the outermost longitudinal reinforcement bar shall be placed directly above the studs of the rail post anchor device.

BILL OF MATERIAL

Item	Unit	Quantity
Steel Railing, Type SM	Foot	163

See Sheet 9 of 13 for additional quantities.

STEEL RAILING, TYPE SM WITH CONCRETE WEARING SURFACE F.A.P. 22 (ILL 78) OVER COAL CREEK SECTION (125BR-2)D HENRY COUNTY STATION 680+94.38 STR. NO. 037-0130

HUTCHISON ENGINEERING, INC. JACKSONVILLE, ILLINOIS

Rev: _____ Date: _____

DESIGNED	BAN
CHECKED	JOH
DRAWN	TC
CHECKED	BAN

R-34CWS

11-1-06

(6'-3" Maximum Post Spacing) (5" minimum to 6 1/2" maximum CWS thickness)

* Threaded areas shall be plugged or blocked off during casting of beam. Galvanized after fabrication.

** Whenever the lower insert assemblies interfere with strand locations, the #3 bars shall be cut and adjusted in order to allow raising or lowering of the lower inserts. Maximum adjustment not to exceed 1/2".