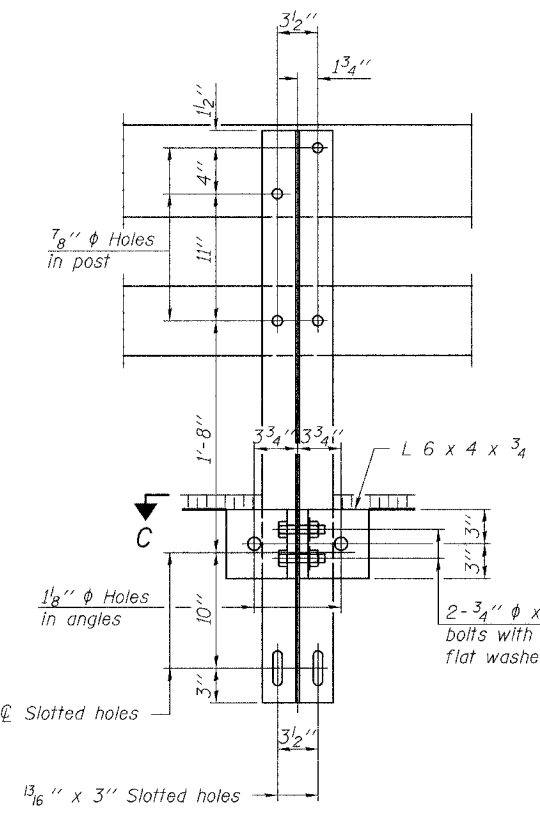
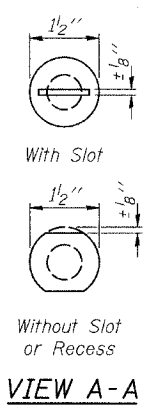
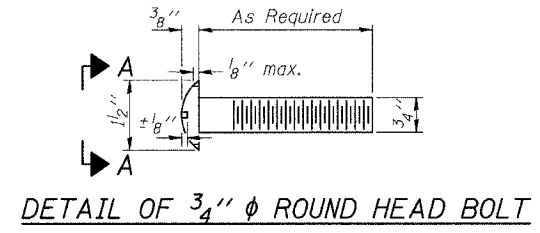
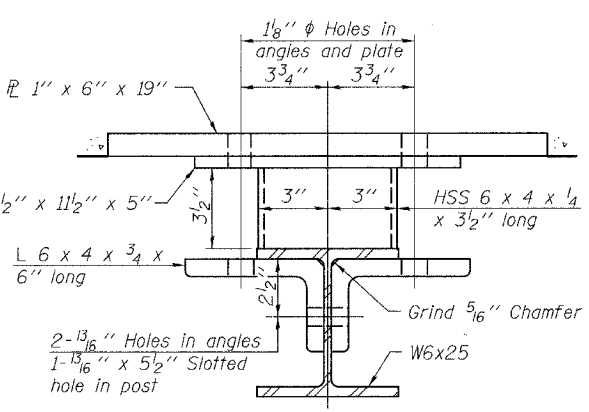


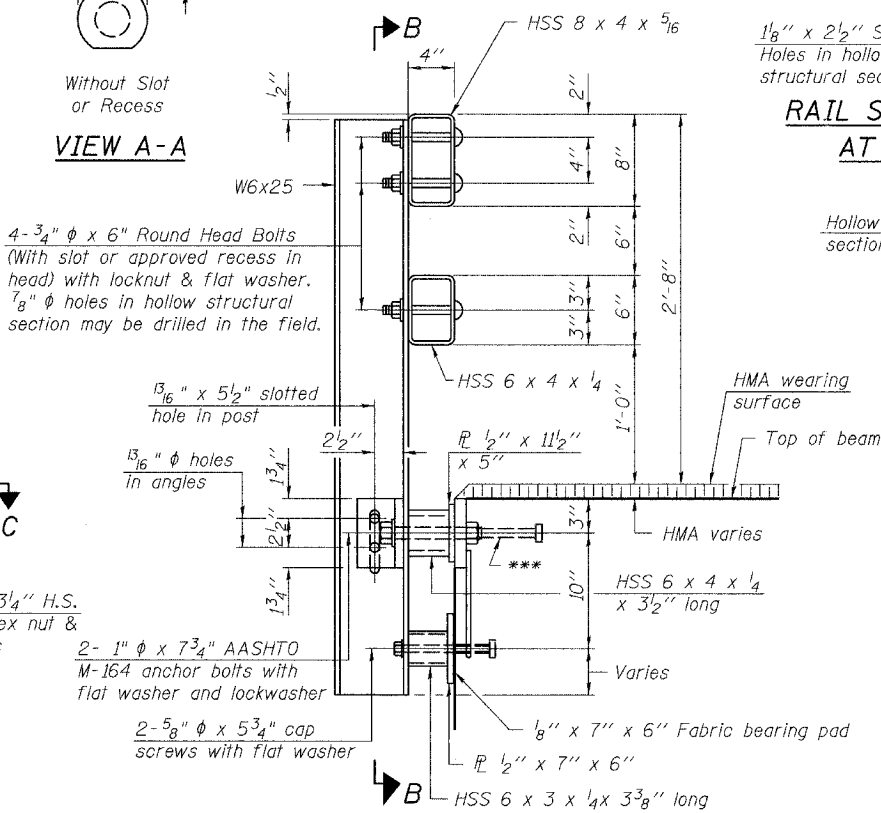
FOR RAIL POST SPACING SEE SH.#10 OF 13



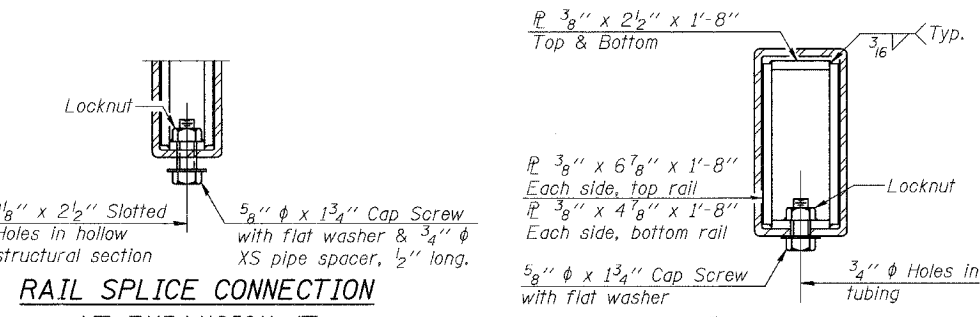
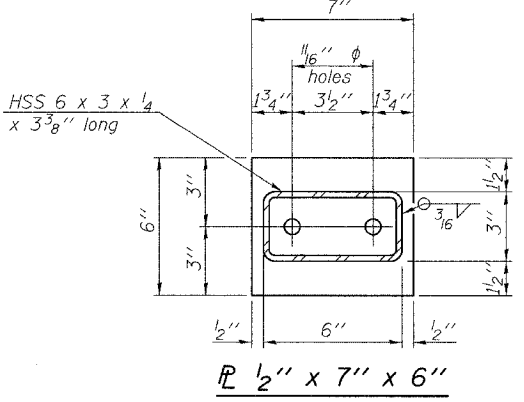
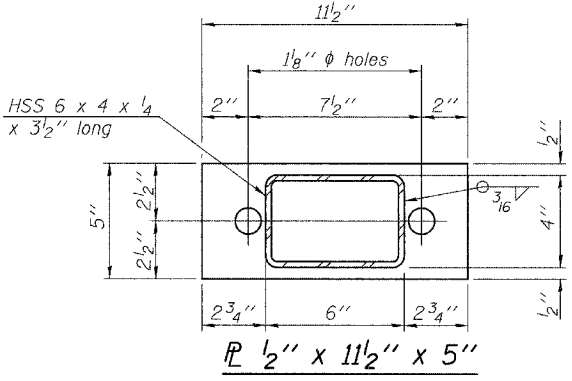
SECTION B-B



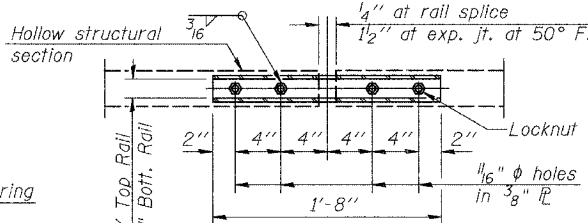
SECTION C-C



SECTION AT RAIL POST ON APPROACH BEAM

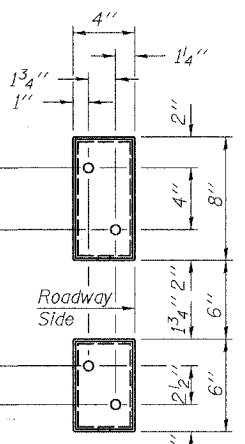


RAIL SPLICE CONNECTION AT EXPANSION JT.

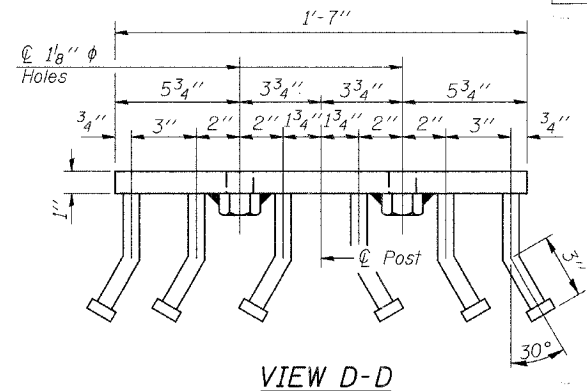


PLAN-BOTT. SPLICE TYPICAL

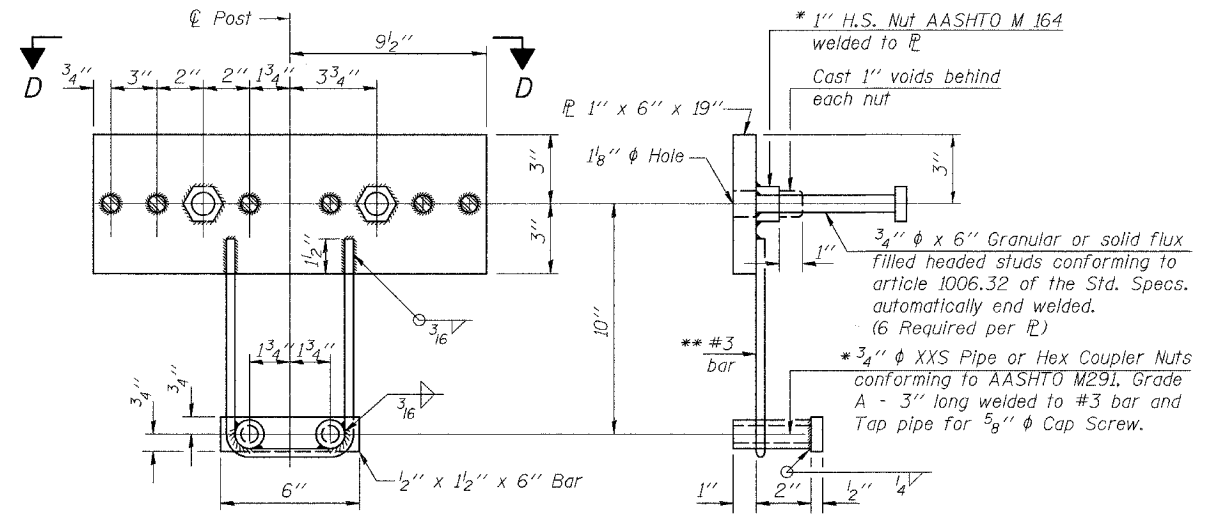
SECTION AT RAIL SPLICE



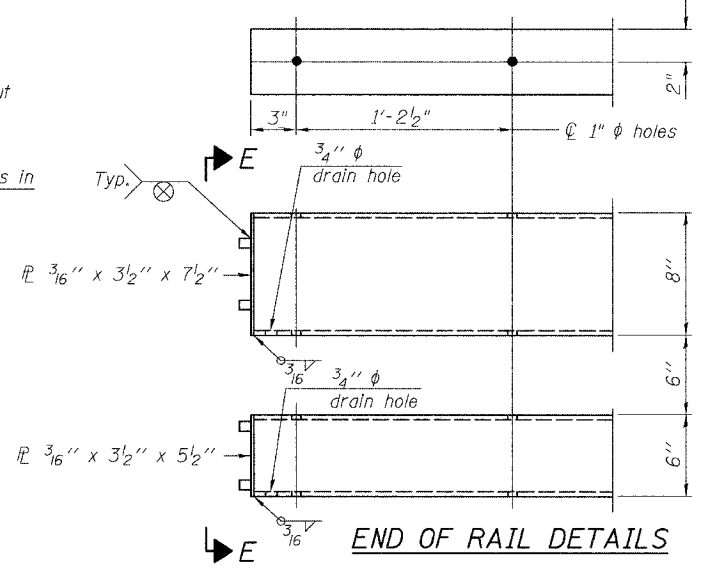
VIEW E-E



VIEW D-D



ANCHOR DEVICE



END OF RAIL DETAILS

Notes:
 All field drilled holes shall be coated with an approved zinc paint before erection.
 For multi-span bridges, sufficient 1/4" x 6" x 1'-2" galvanized steel shims shall be provided to align rail between adjacent spans. Cost included with Steel Railing, Type SM.
 All steel rail members shall be galvanized according to Article 509.05 of the Standard Specifications.
 *** The studs of the anchor devices shall be placed below the top reinforcement bars and the outermost longitudinal reinforcement bar shall be placed directly above the studs of the rail post anchor device.

BILL OF MATERIAL

Item	Unit	Quantity
Steel Railing, Type SM	Foot	96

See sheet 8 of 13 for additional quantities.

STEEL RAILING, TYPE SM WITH HOT-MIX ASPHALT WEARING SURFACE
F.A.P. 22 (ILL 78) OVER COAL CREEK SECTION (I25BR-2)D HENRY COUNTY STATION 680+94.38 STR. NO. 037-0130

HUTCHISON ENGINEERING, INC. JACKSONVILLE, ILLINOIS

DESIGNED	BAN
CHECKED	JOH
DRAWN	TC
CHECKED	BAN

* Threaded areas shall be plugged or blocked off during casting of beam. Galvanized after fabrication.
 ** Whenever the lower insert assemblies interfere with strand locations, the #3 bars shall be cut and adjusted in order to allow raising or lowering of the lower inserts. Maximum adjustment not to exceed 1/2".