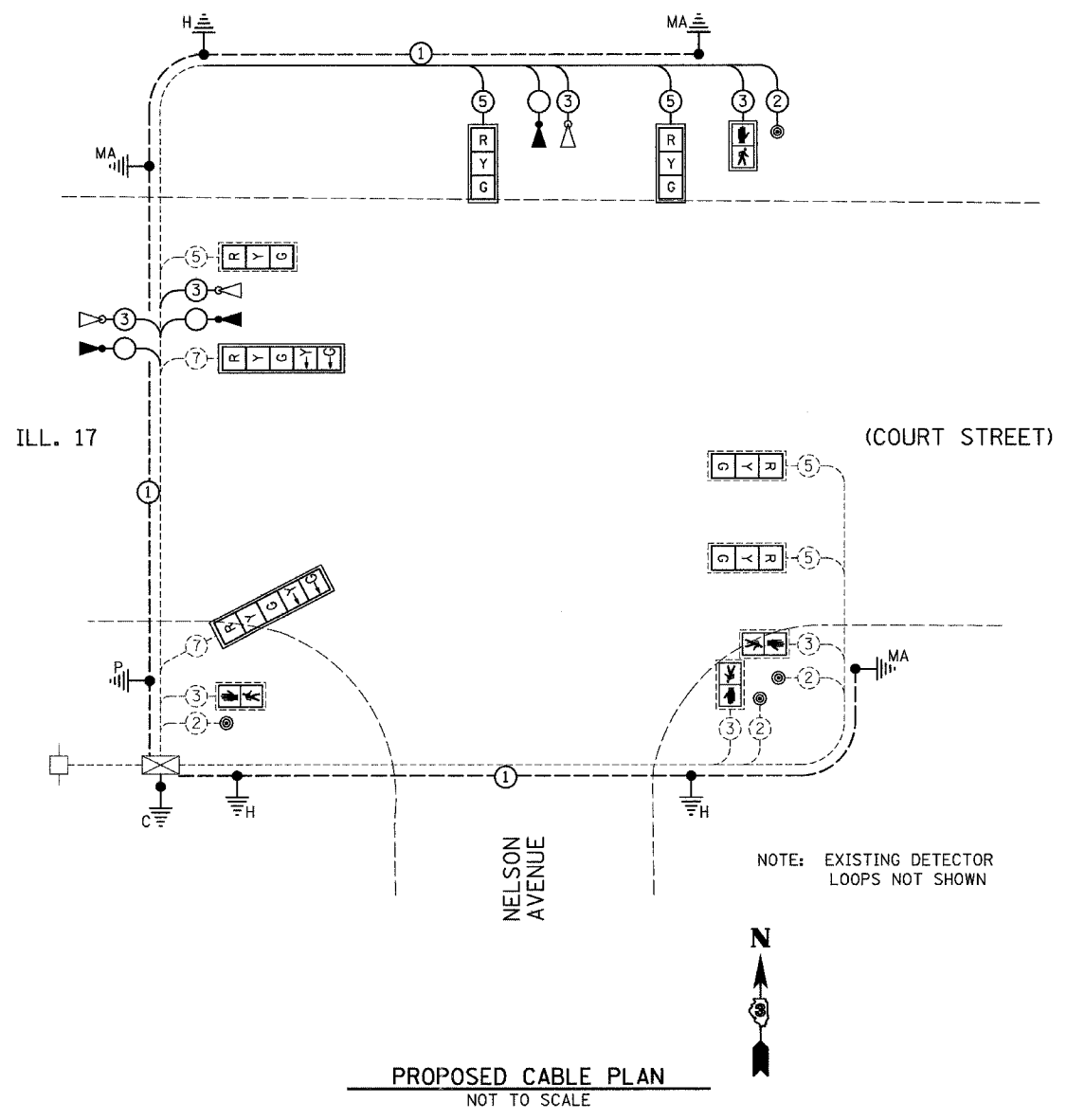


| F.A.P. RTE.         | SECTION | COUNTY   | TOTAL SHEETS     | SHEET NO. |
|---------------------|---------|----------|------------------|-----------|
| .                   | .       | KANKAKEE | 48               | 5         |
| STA.                |         | TO STA.  |                  |           |
| FED. ROAD DIST. NO. |         | ILLINOIS | FED. AID PROJECT |           |

- FAP 840 (IL 50) & FAP 330 (IL 17)
- (139 Z, 11) TS-1 & (1) TS-2



**PROPOSED TRAFFIC SIGNALS LEGEND**

- ⊙ PROPOSED CABLE NUMBER  
\*=-CABLE NUMBER
- ▲ EMERGENCY VEHICLE CONFIRMATION BEACON
- ▽ EMERGENCY VEHICLE LIGHT DETECTOR
- ⊙ PEDESTRIAN PUSH BUTTON
- ⏏ LEFT TURN YELLOW
- ⏏ LEFT TURN GREEN
- ▭ SIGNAL SECTION 12"
- ⏏ WALK/DON'T WALK SECTION
- ▭ TRAFFIC SIGNAL BACKPLATE
- ▭ RETROFIT EXISTING TRAFFIC SIGNAL WITH LED HEADS
- ⏏ RETROFIT EXISTING PEDESTRIAN SIGNAL WITH LED SYMBOL HEADS
- ① GROUND CABLE IN CONDUIT, NO. 6 SOLID COPPER (GREEN)
- ⦿<sup>C</sup> GROUND ROD AT CONTROLLER (C), POST (P), MAST ARM (MA), SERVICE (S), OR HANDHOLE (H)

| REVISIONS |      |
|-----------|------|
| NAME      | DATE |
| ARR       | 4/07 |
|           |      |
|           |      |
|           |      |
|           |      |
|           |      |
|           |      |
|           |      |
|           |      |

ILLINOIS DEPARTMENT OF TRANSPORTATION  
**CABLE PLAN**  
 FAP 330 (IL 17)-COURT STREET  
 AND NELSON AVENUE  
 SECTION (139 Z, 11) TS-1 & (1) TS-2  
 KANKAKEE COUNTY

SCALE: VERT. 1" = 20'  
 HORIZ. 1" = 20'

DATE 6/05

DRAWN BY ARR  
 CHECKED BY JLS