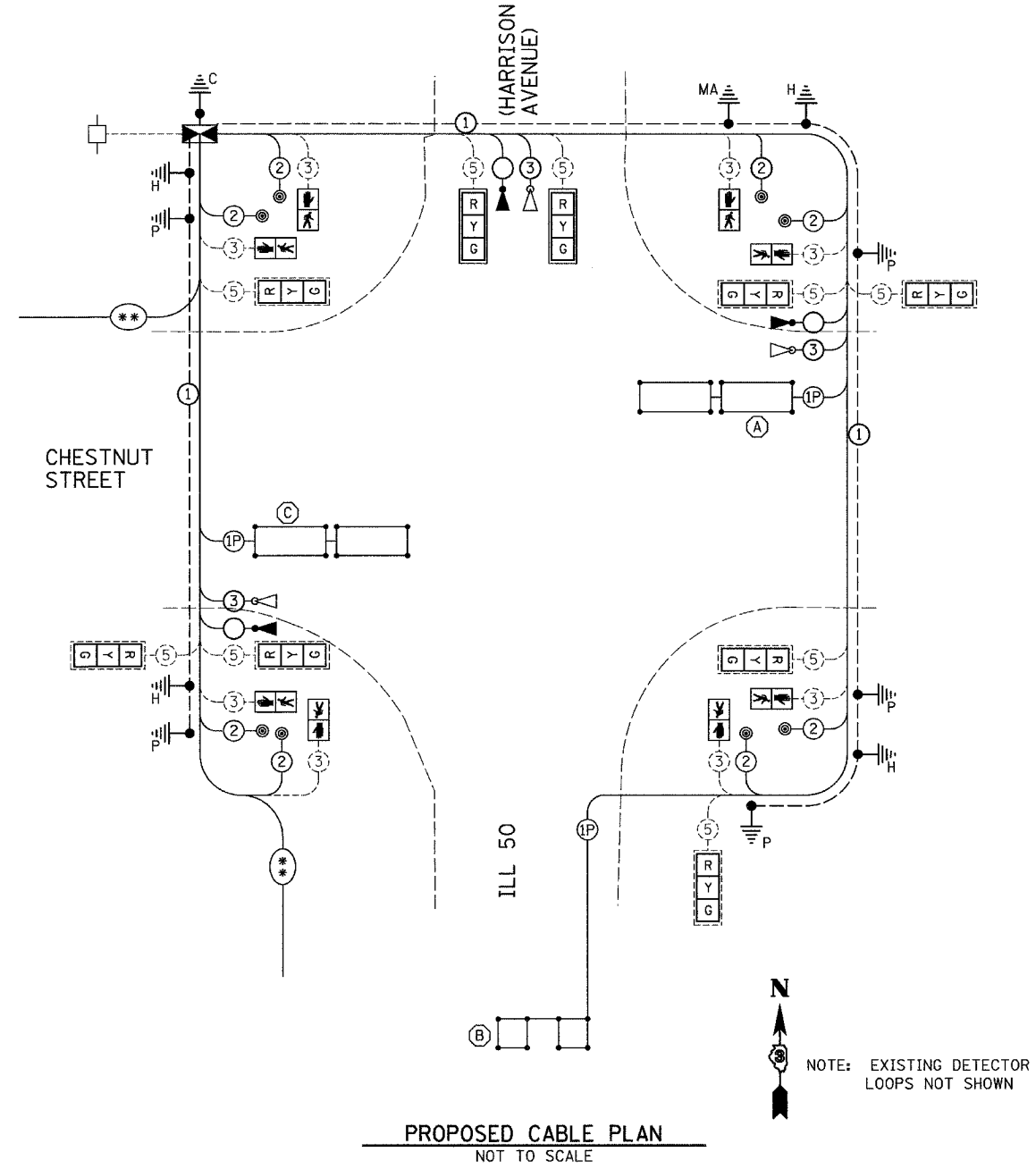
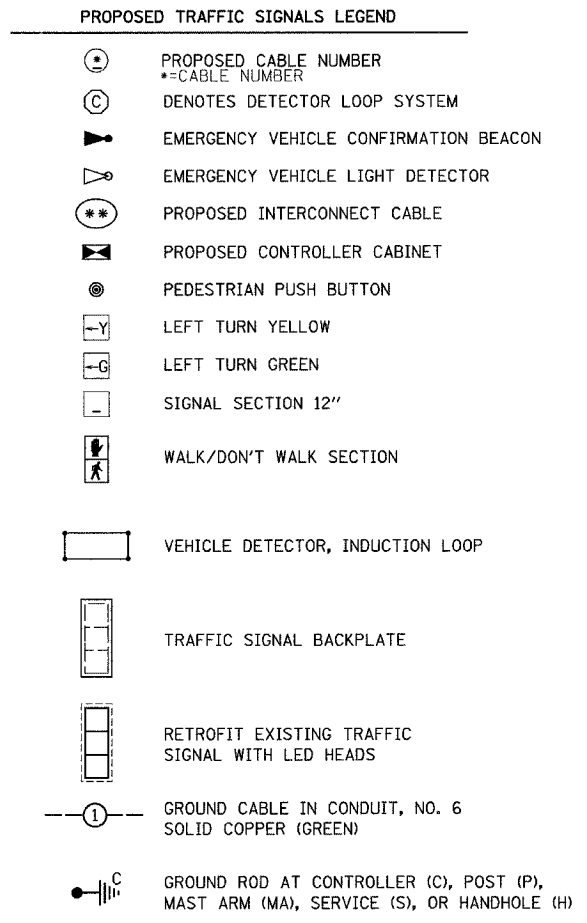
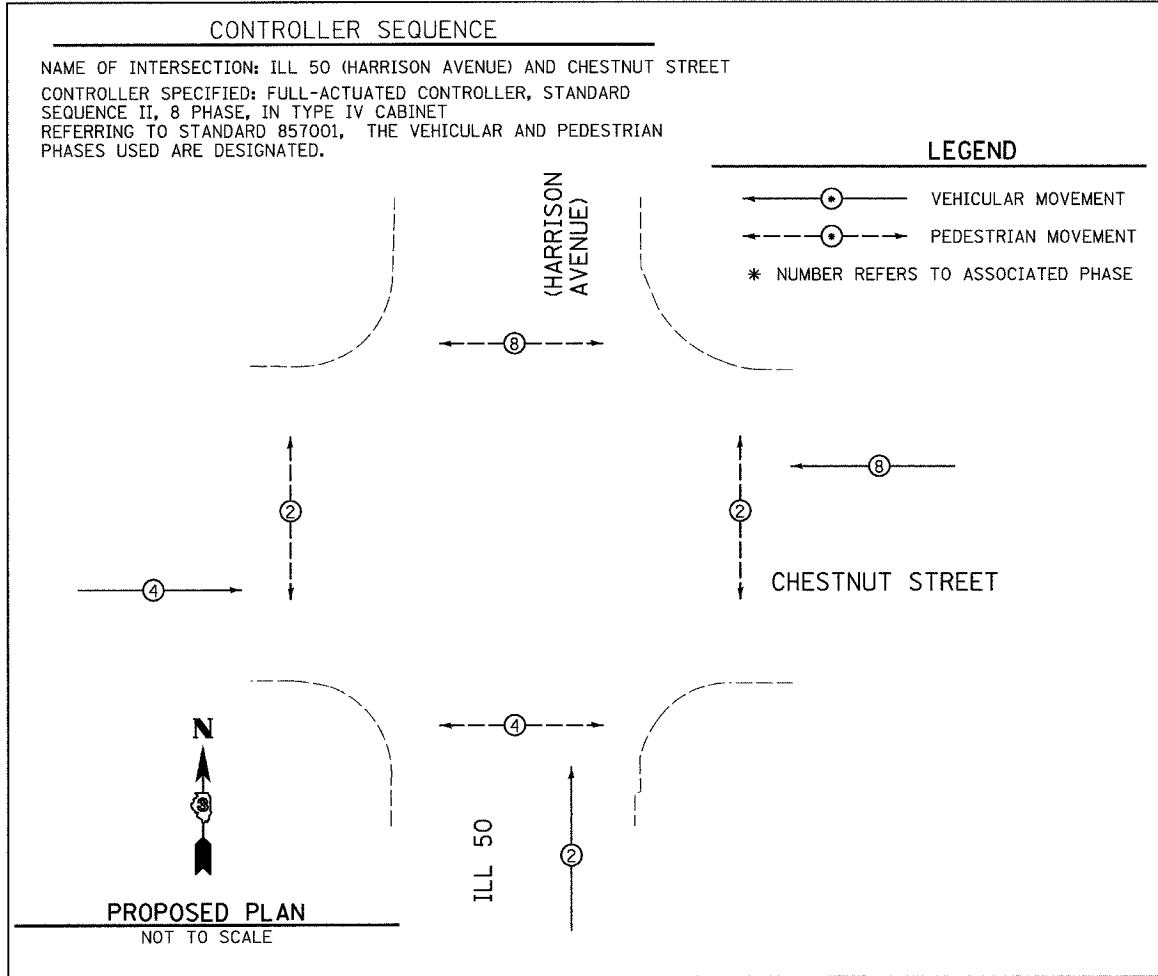
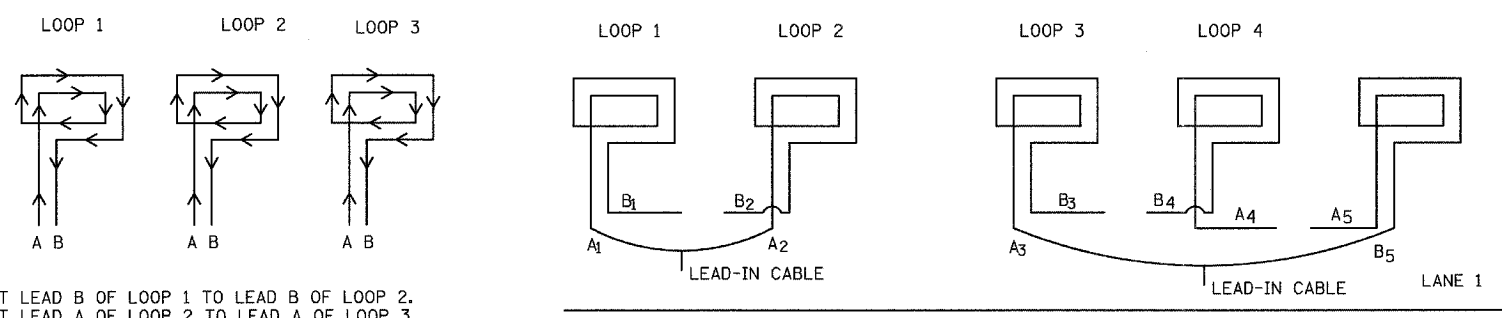


F.A.P. RTE.	SECTION	COUNTY	TOTAL SHEETS	SHEET NO.
.	.	KANKAKEE	48	15
STA. TO STA.		ILLINOIS FED. AID PROJECT		
FED. ROAD DIST. NO.		ILLINOIS FED. AID PROJECT		

- FAP 840 (IL 50) & FAP 330 (IL 17)
- (139 Z, 11) TS-1 & (1) TS-2



STEP 1
 WIND ALL LOOPS CLOCKWISE. LABEL BEGINNING END OF CABLE A.
 LABEL ENDING END OF CABLE B. FOLLOW DETECTOR LOOP CABLE
 MANUFACTURER'S INSTRUCTIONS ON NUMBER OF TURNS FOR LOOP.



STEP 2
 CONNECT LEAD B OF LOOP 1 TO LEAD B OF LOOP 2.
 CONNECT LEAD A OF LOOP 2 TO LEAD A OF LOOP 3.

DETECTOR LOOP WINDING AND SERIES SPLICING DETAIL
 (SEE DETECTOR LOOP INDUCTANCE CHART FOR NUMBER OF TURNS)

REVISIONS		
NAME	DATE	
ARR	4/07	

ILLINOIS DEPARTMENT OF TRANSPORTATION
CABLE PLAN
 FAP 840 (IL 50)-HARRISON AVENUE
 AND CHESTNUT STREET
 SECTION (139 Z, 11) TS-1 & (1) TS-2
 KANKAKEE COUNTY

SCALE: VERT. 1" = 20'
 HORIZ. 1" = 20'

DATE 6/05

DRAWN BY ARR
 CHECKED BY JLS