

F.A.P. RTE.	SECTION	COUNTY	TOTAL SHEETS	SHEET NO.
*	**	KANKAKEE	48	18
STA. TO STA.		FED. ROAD DIST. NO. - ILLINOIS FED. AID PROJECT		

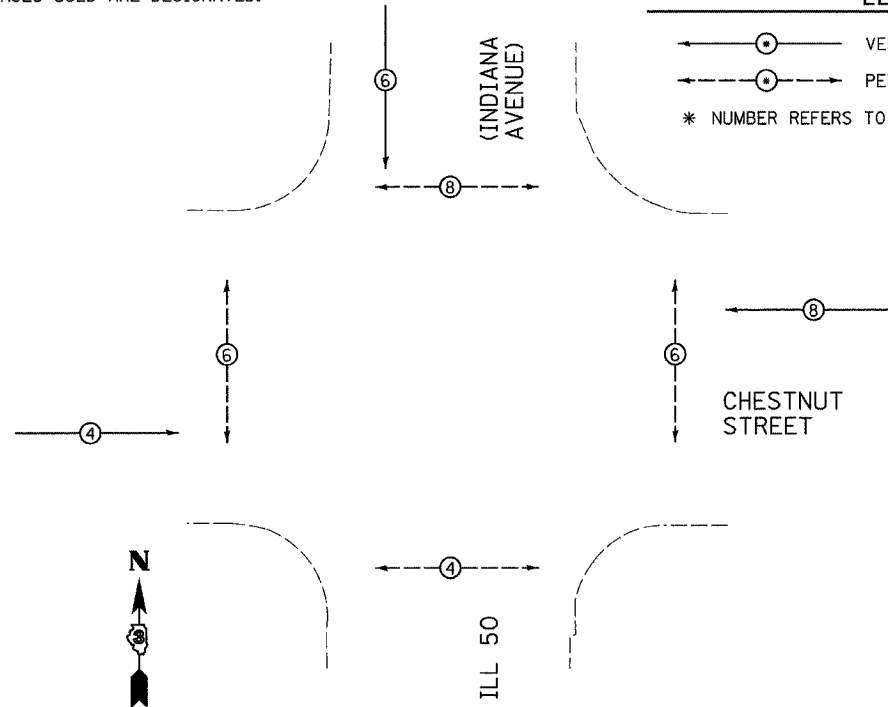
- FAP 840 (IL 50) & FAP 330 (IL 17)
- (139 Z, 11) TS-1 & (1) TS-2

CONTROLLER SEQUENCE

NAME OF INTERSECTION: ILL 50 (INDIANA AVENUE) AND CHESTNUT STREET
 CONTROLLER SPECIFIED: FULL-ACTUATED CONTROLLER, STANDARD SEQUENCE II, 8 PHASE, IN TYPE IV CABINET
 REFERRING TO STANDARD 857001, THE VEHICULAR AND PEDESTRIAN PHASES USED ARE DESIGNATED.

LEGEND

- VEHICULAR MOVEMENT
- PEDESTRIAN MOVEMENT
- * NUMBER REFERS TO ASSOCIATED PHASE

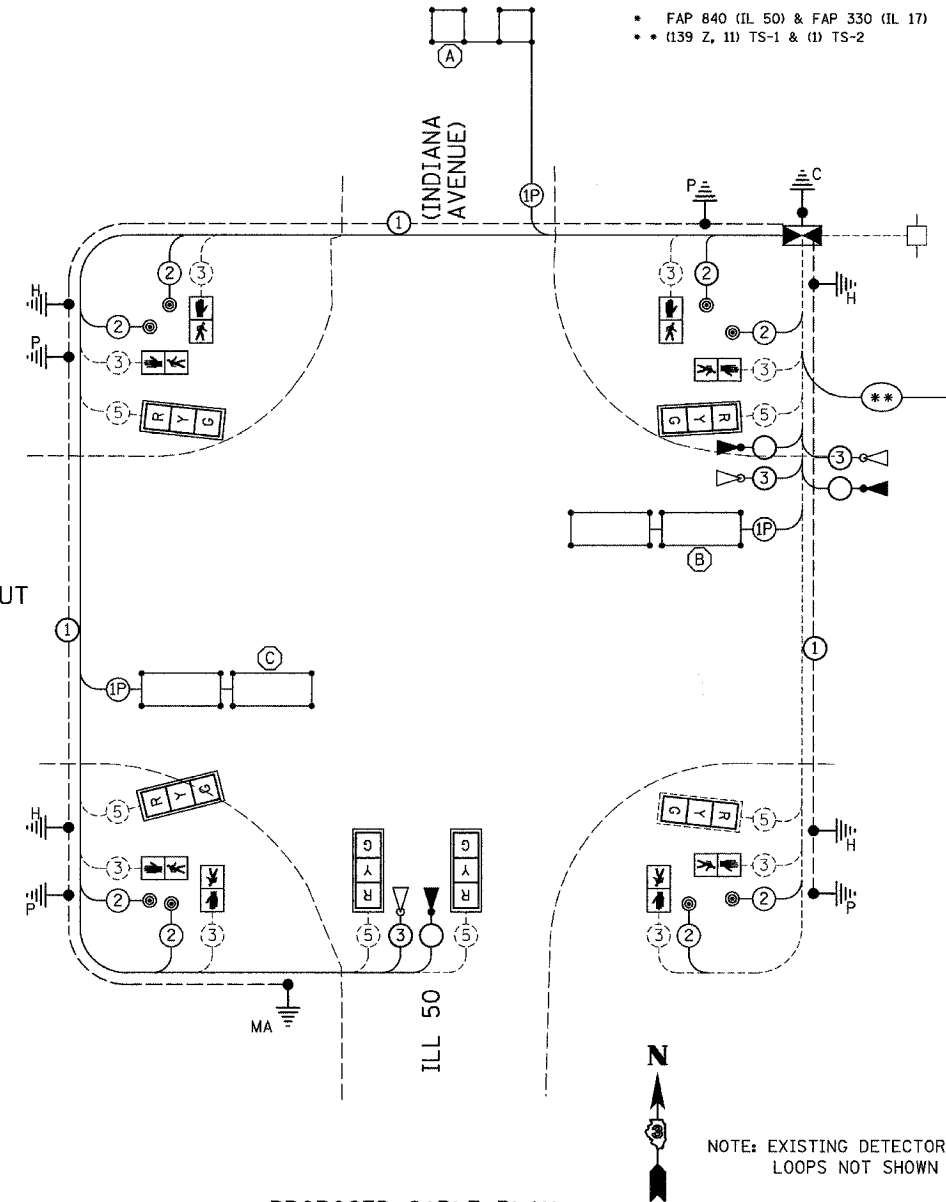


PROPOSED PLAN
NOT TO SCALE

PROPOSED TRAFFIC SIGNALS LEGEND

- PROPOSED CABLE NUMBER
- DENOTES DETECTOR LOOP SYSTEM
- EMERGENCY VEHICLE CONFIRMATION BEACON
- EMERGENCY VEHICLE LIGHT DETECTOR
- PROPOSED INTERCONNECT CABLE
- PROPOSED CONTROLLER CABINET
- PEDESTRIAN PUSH BUTTON
- LEFT TURN YELLOW
- LEFT TURN GREEN
- SIGNAL SECTION 12"
- WALK/DON'T WALK SECTION
- VEHICLE DETECTOR, INDUCTION LOOP
- TRAFFIC SIGNAL BACKPLATE
- RETROFIT EXISTING TRAFFIC SIGNAL WITH LED HEADS
- GROUND CABLE IN CONDUIT, NO. 6 SOLID COPPER (GREEN)
- GROUND ROD AT CONTROLLER (C), POST (P), MAST ARM (MA), SERVICE (S), OR HANDHOLE (H)

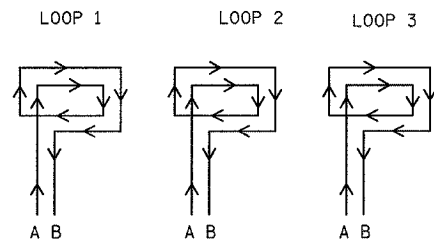
CHESTNUT STREET



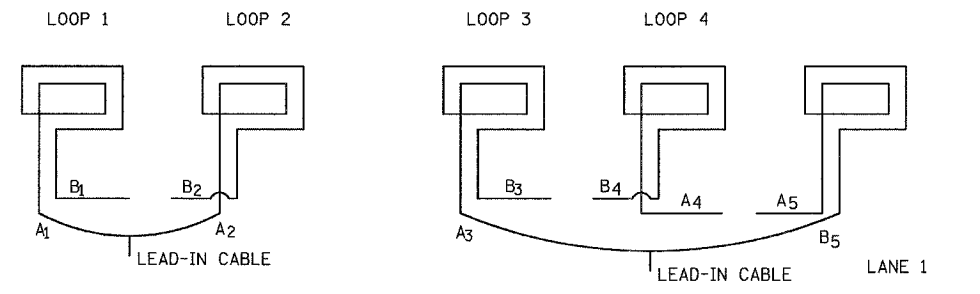
PROPOSED CABLE PLAN
NOT TO SCALE

NOTE: EXISTING DETECTOR LOOPS NOT SHOWN

STEP 1
WIND ALL LOOPS CLOCKWISE. LABEL BEGINNING END OF CABLE A. LABEL ENDING END OF CABLE B. FOLLOW DETECTOR LOOP CABLE MANUFACTURER'S INSTRUCTIONS ON NUMBER OF TURNS FOR LOOP.



STEP 2
CONNECT LEAD B OF LOOP 1 TO LEAD B OF LOOP 2.
CONNECT LEAD A OF LOOP 2 TO LEAD A OF LOOP 3.



DETECTOR LOOP WINDING AND SERIES SPLICING DETAIL
(SEE DETECTOR LOOP INDUCTANCE CHART FOR NUMBER OF TURNS)

REVISIONS	
NAME	DATE
ARR	4/07

ILLINOIS DEPARTMENT OF TRANSPORTATION
CABLE PLAN
 FAP 840 (IL 50)-INDIANA AVENUE
 AND CHESTNUT STREET
 SECTION (139 Z, 11) TS-1 & (1) TS-2
 KANKAKEE COUNTY

SCALE: VERT. 1" = 20'
 HORIZ. 1" = 20'
 DATE 6/05

DRAWN BY ARR
 CHECKED BY JLS