

F.A.P. RTE.	SECTION	COUNTY	TOTAL SHEETS	SHEET NO.
•	••	KANKAKEE	48	21
STA.		TO STA.		
FED. ROAD DIST. NO.		ILLINOIS FED. AID PROJECT		

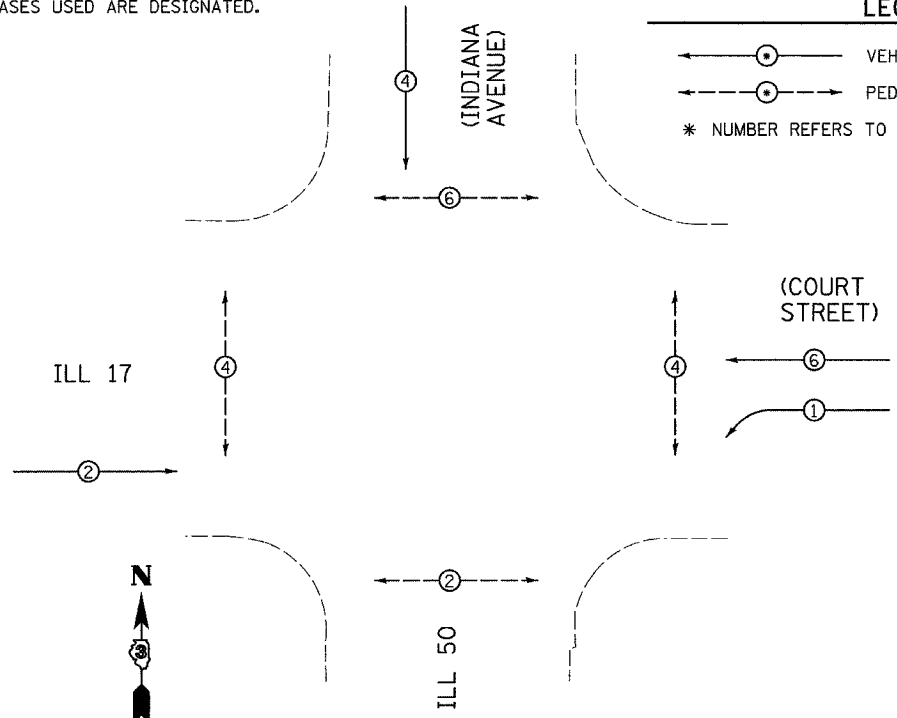
- FAP 840 (IL 50) & FAP 330 (IL 17)
- (139 Z, 11) TS-1 & (1) TS-2

CONTROLLER SEQUENCE

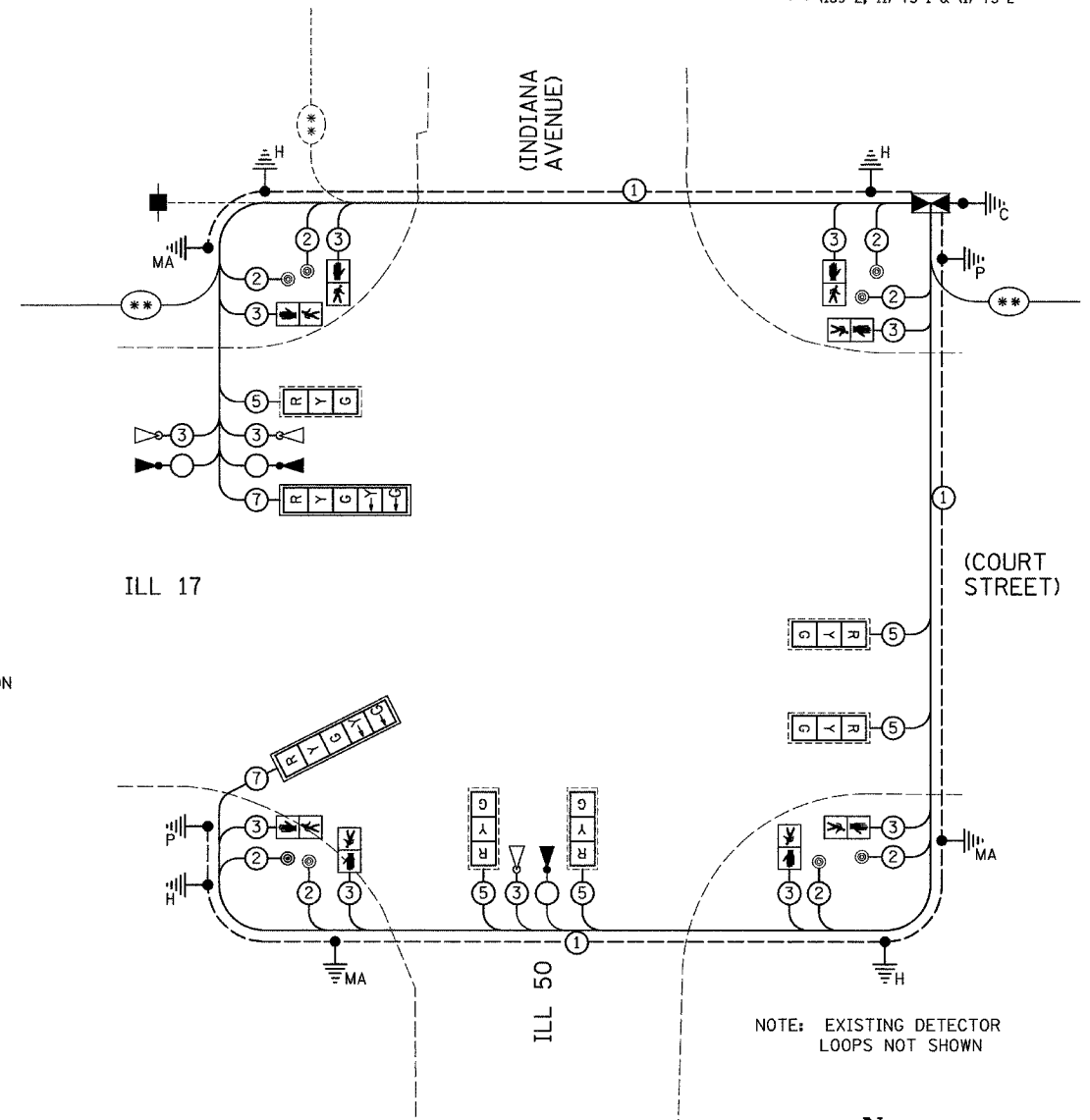
NAME OF INTERSECTION: ILL 17 (COURT STREET) AND ILL 50 (INDIANA AVENUE)
 CONTROLLER SPECIFIED: FULL-ACTUATED CONTROLLER, STANDARD SEQUENCE II, 8 PHASE, IN TYPE IV CABINET
 REFERRING TO STANDARD 857001, THE VEHICULAR AND PEDESTRIAN PHASES USED ARE DESIGNATED.

LEGEND

- VEHICULAR MOVEMENT
- - -○- - - PEDESTRIAN MOVEMENT
- * NUMBER REFERS TO ASSOCIATED PHASE



PROPOSED PLAN
NOT TO SCALE



NOTE: EXISTING DETECTOR LOOPS NOT SHOWN

PROPOSED CABLE PLAN
NOT TO SCALE

PROPOSED TRAFFIC SIGNALS LEGEND

- PROPOSED CABLE NUMBER
- *-CABLE NUMBER
- ▼ EMERGENCY VEHICLE CONFIRMATION BEACON
- ▽ EMERGENCY VEHICLE LIGHT DETECTOR
- ** EXISTING INTERCONNECT CABLE
- ** PROPOSED INTERCONNECT CABLE
- PROPOSED SERVICE INSTALLATION
- PROPOSED CONTROLLER CABINET
- PEDESTRIAN PUSH BUTTON
- Y- LEFT TURN YELLOW
- G- LEFT TURN GREEN
- SIGNAL SECTION 12"
- ⬇⬆ WALK/DON'T WALK SECTION
- ▭ TRAFFIC SIGNAL BACKPLATE
- ▭ RETROFIT EXISTING TRAFFIC SIGNAL WITH LED HEADS
- ① GROUND CABLE IN CONDUIT, NO. 6 SOLID COPPER (GREEN)
- ⊖ GROUND ROD AT CONTROLLER (C), POST (P), MAST ARM (MA), SERVICE (S), OR HANDHOLE (H)

PLOT DATE = 4/07
 FILE NAME = ILL17-INDIANA-CABLE.DGN
 PLOT SCALE = 1" = 20'
 USER NAME = ARR

REVISIONS		
NAME	DATE	
ARR	4/07	

ILLINOIS DEPARTMENT OF TRANSPORTATION
CABLE PLAN
 FAP 330 (IL 17)-COURT STREET AND
 FAP 840 (IL 50)-INDIANA AVENUE
 SECTION (139 Z, 11) TS-1 & (1) TS-2
 KANKAKEE COUNTY

SCALE: VERT. 1" = 20'
 HORIZ. 1" = 20'

DATE 6/05

DRAWN BY ARR
 CHECKED BY JLS