

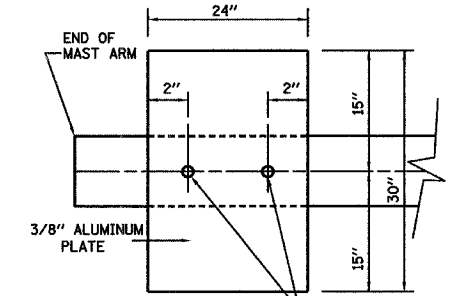
F.A. RTE.	SECTION	COUNTY	TOTAL SHEETS	SHEET NO.
•	••	KANKAKEE	48	28
STA. _____		TO STA. _____		
FED. ROAD DIST. NO. _____		ILLINOIS FED. AID PROJECT		

- FAP 840 (IL 50) & FAP 330 (IL 17)
- (139 Z, 11) TS-1 & (1) TS-2

ELECTRICAL LOAD FOR INTERSECTION				
STREET NAME	COMPONENT	NUMBER	WATTAGE EACH	BURNTIME %
ILLINOIS ROUTE 17 (COURT STREET)	RED	7	10	68
	YELLOW	7	19	5
	GREEN	7	14	27
	YELLOW ARROW-LT.	4	9	5
	GREEN ARROW-LT.	4	3.4	11
			4	8
FIFTH AVENUE	RED	4	10	74
	YELLOW	4	19	5
	GREEN	4	14	21
		4	8	95
		4	6	5
TRAFFIC SIGNAL CABINET	CONTROLLER	1	6	100
	VEHICLE DETECTORS	5	4	100
	UPS	1	50	100
	EMERGENCY VEHICLE PREEMPT	3	--	--

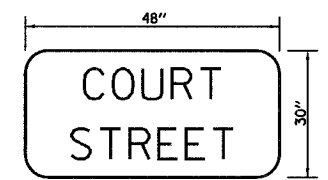
AGENCY RESPONSIBLE FOR TRAFFIC SIGNAL ENERGY CHARGES:
CITY OF KANKAKEE

NOTE:
DAMPENING DEVICE SHALL CONSIST OF A 24" X 30" TYPE 1, UNPAINTED ALUMINUM SIGN STOCK MOUNTED HORIZONTALLY ON TOP OF MAST ARM WITH THE 30" LENGTH PERPENDICULAR TO THE ARM. COST OF THE DAMPENING DEVICE IS INCLUDED IN THE MAST ARM PAY ITEM.



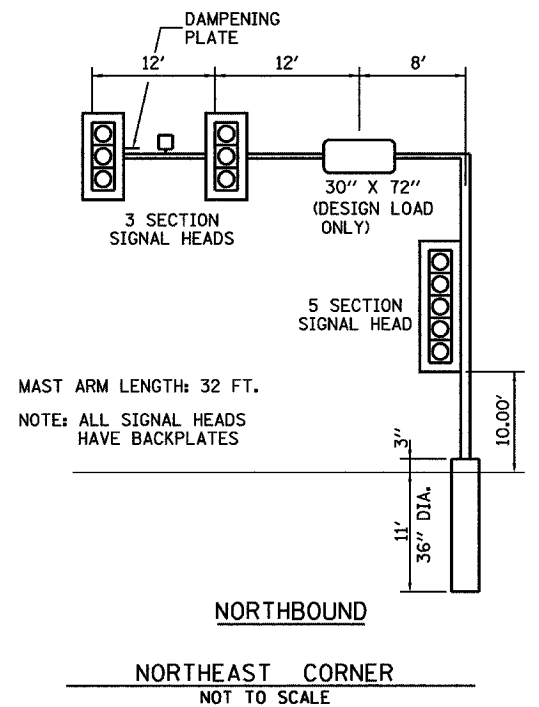
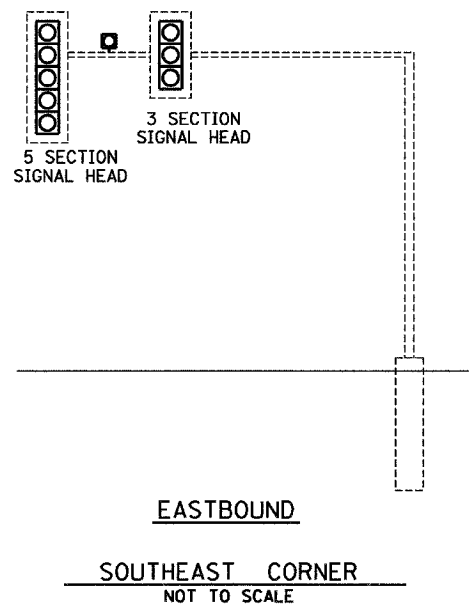
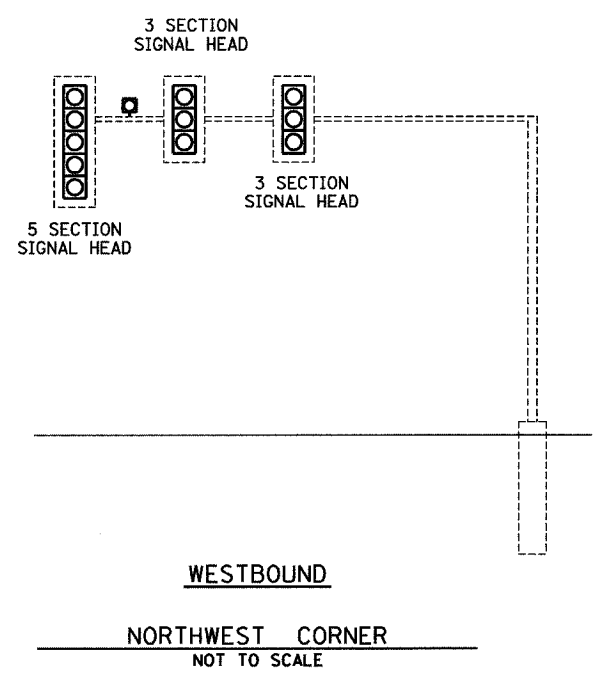
2-5/8" STAINLESS STEEL BOLTS THROUGH STAINLESS STEEL BANDING
NOTE:
MOUNT DAMPENING PLATE TO END OF EACH TRAFFIC SIGNAL MAST ARM.

DAMPENING PLATE DETAIL - TOP VIEW



TYPE A SHEETING REQUIRED
8" D SERIES LETTERS
1 SIGNS REQUIRED = 10.0 SQ. FT. EACH
= 10.0 SQ. FT. TOTAL

THIS STREET NAME SIGN SHALL BE PLACED ON THE MAST ARMS PARALLEL WITH ILL RTE 17 (COURT STREET)



ILLINOIS ROUTE 17 (COURT STREET) / FIFTH AVENUE

REVISIONS	
NAME	DATE
ARR	4/07

ILLINOIS DEPARTMENT OF TRANSPORTATION
TRAFFIC SIGNAL DETAILS
FAP 330 (IL 17)-COURT STREET
AND FIFTH AVENUE
SECTION (139 Z, 11) TS-1 & (1) TS-2
KANKAKEE COUNTY

SCALE: VERT. 1" = 20'
HORIZ. 1" = 20'
DATE 6/05

DRAWN BY ARR
CHECKED BY JLS