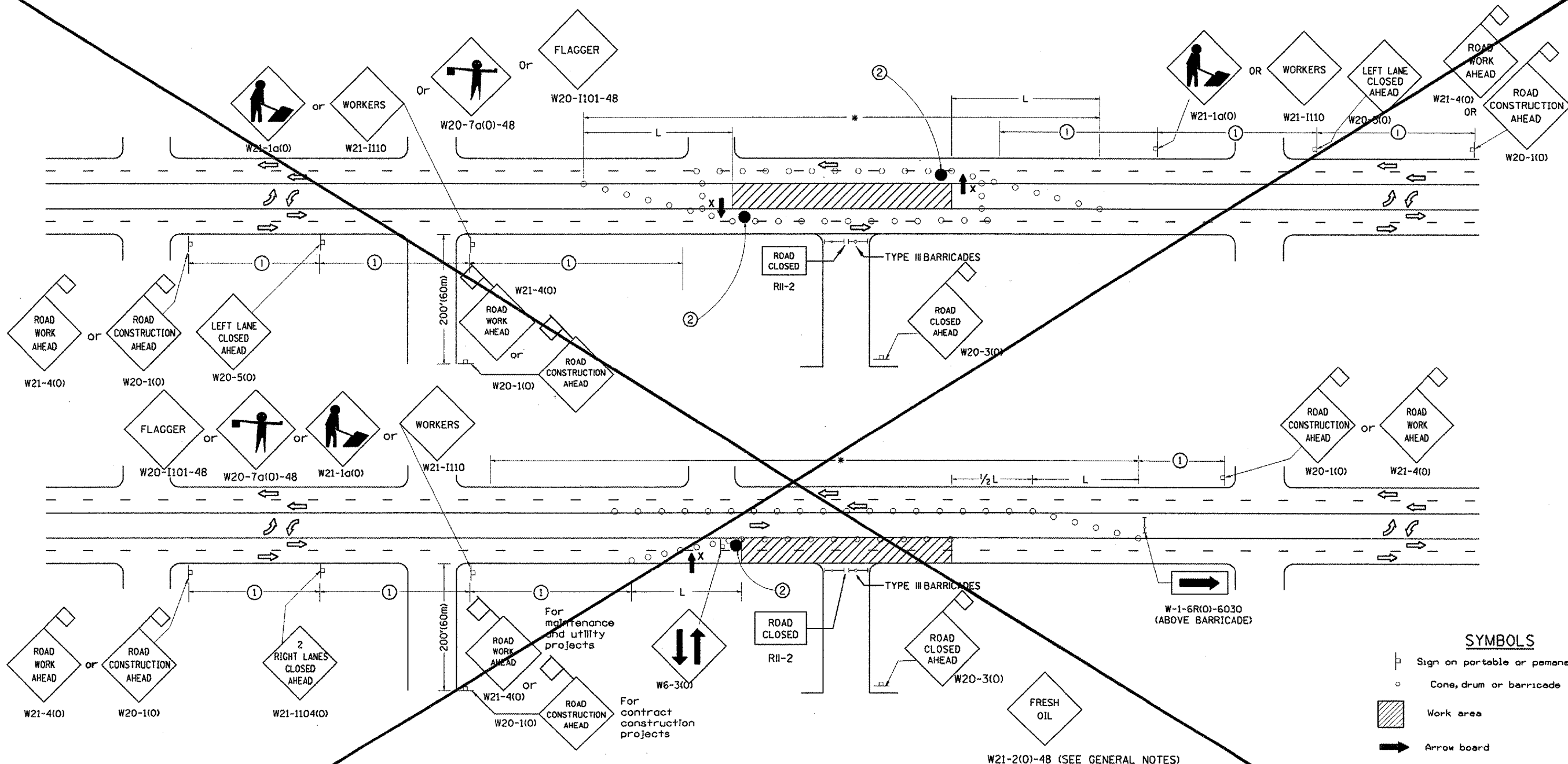


F.A. RTE.	SECTION	COUNTY	TOTAL SHEETS	SHEET NO.
317	(46-1)RS-7	PEORIA	62	59
STA. TO STA.		FED. ROAD DIST. NO. ILLINOIS FED. AID PROJECT		



SYMBOLS

- ▬ Sign on portable or permanent support
- Cone, drum or barricade
- ▨ Work area
- ➡ Arrow board
- ◇ 18x18(450x450) (Minimum) orange flag
- ⊙ Drum or barricade with flashing light
- X High level warning device
- Flagger with traffic control sign

All dimensions are in inches (millimeters) unless otherwise noted.

GENERAL NOTES

Cones at 25' (8m) centers for 250' (75m). Additional cones may be placed at 50' (15m) centers. When drums or type I or II barricades are used, the interval between devices may be doubled.

Where, at anytime, day or night, any vehicle, equipment, workers or their activities encroach on the pavement requiring the closure of one traffic lane in an Urban area.

The L distance shall be defined as:
 ENGLISH METRIC
 $L = WS^2/60$ $L = WS^2/150$
 Where: W = Width of closure in feet(meters).
 S = Normal posted speed limit in mph(km/h).

If the work operation is performed between 9:00 a.m. and 3:00 p.m. and does not exceed 15 min Traffic protection shall be as shown for Std. 701301.

Form "BT 725" is required.

SIGN SPACING	
Posted Speed	Sign Spacing
55	500' (164m)
50-45	350' (115m)
<45	200' (60m)

- ① = Refer to SIGN SPACING TABLE for distances.
- ② = Required for speeds > 40 MPH

△ SHEET DELETED 7/16/07

DATE	REVISIONS	BY
1-1-97	RENUM. F-6.06, NEW REVISIONS BOX, REVISED TITLE	T.P.
3-11-97	CHANGE TITLE, ADD SHEET 2	S.N.
6-1-97	REVISE SYMBOLS NOTE	S.N.
3-9-99	REVISE SYMBOLS & NOTES	S.N.
10-16-06	REVISED TO 2007 SPEC.	M.A.

ILLINOIS DEPARTMENT OF TRANSPORTATION
DISTRICT CADD STANDARD
 STANDARD 701606 (SPECIAL)
 URBAN LANE CLOSURE
 MULTILANE, 2-WAY WITH
 BIDIRECTIONAL LEFT TURN LANE
 FOR SPEEDS < 45 MPH
 CADD STD. 701606-D4 SHEET 1 OF 2
 SCALE: NOT DRAWN TO SCALE DRAWN BY CADD CHECKED BY

\$\$\$DATE\$\$\$