



# Illinois Department of Transportation

2300 South Dirksen Parkway / Springfield, Illinois / 62764

July 16, 2007

SUBJECT: FAS Route 1388 (IL 8)  
Section (Z-1D-BR-1) I-1; (ZC-15D-BR) I  
Peoria County  
Contract No. 68751  
Item No. 93, August 3, 2007 Letting  
Addendum A

## NOTICE TO PROSPECTIVE BIDDERS:

Attached is an addendum to the plans or proposal. This addendum involves revised and/or added material.

1. Revised page 2 of the Schedule of Prices
2. Revised page i of the Table of Contents to the Special Provisions.
3. Added pages 31 – 34 to the Special Provisions.
4. Revised sheets 3, 7 and 16 of the Plans.

Prime contractors must utilize the enclosed material when preparing their bid and must include any Schedule of Prices changes in their bidding proposal.

Bidders using computer-generated bids are cautioned to reflect any and all Schedule of Prices changes, if involved, into their computer programs.

Very truly yours,

Eric E. Harm  
Interim Bureau Chief  
Bureau of Design and Environment

A handwritten signature in black ink, appearing to read 'Ted B. Walschleger P.E.'.

By: Ted B. Walschleger, P. E.  
Engineer of Project Management

cc: J. E. Crowe, Region 3, District 4; Roger Driskell; Estimates; Design & Environment File

TBW:RS:jc

ILLINOIS DEPARTMENT OF TRANSPORTATION  
 SCHEDULE OF PRICES  
 CONTRACT  
 NUMBER - 68751

State Job # - C-94-118-07  
 PPS NBR -  
 County Name - PEORIA--  
 Code - 143 - -  
 District - 4 - -  
 Section Number - (Z-1D-BR-1)I-1;(ZC-15D-BR)I

Project Number

Route  
 FAS 1388

Item Number	Pay Item Description	Unit of Measure	Quantity	x	Unit Price	=	Total Price
50800205	REINF BARS, EPOXY CTD	POUND	80.000				
50900905	REM & RE EX RAILING	FOOT	1,105.000				
58100200	WATERPRF MEMBRANE SYS	SQ YD	394.500				
58300100	PC MORTAR FAIRING CSE	FOOT	1,437.000				
67100100	MOBILIZATION	L SUM	1.000				
70100405	TRAF CONT-PROT 701321	EACH	1.000				
70100450	TRAF CONT-PROT 701201	L SUM	1.000				
70100500	TRAF CONT-PROT 701326	L SUM	1.000				
70101800	TRAF CONT & PROT SPL	L SUM	1.000				
* 70106500	TEMP BR TRAF SIGNALS	EACH	2.000				
70300520	PAVT MARK TAPE T3 4	FOOT	8,066.000				
70301000	WORK ZONE PAVT MK REM	SQ FT	2,600.000				
70400100	TEMP CONC BARRIER	FOOT	744.000				
70400200	REL TEMP CONC BARRIER	FOOT	1,080.000				
78005110	EPOXY PVT MK LINE 4	FOOT	4,502.000				
78005150	EPOXY PVT MK LINE 12	FOOT	550.000				
			* REVISED : JULY 16, 2007				

**TABLE OF CONTENTS**

LOCATION OF PROJECT ..... 1  
DESCRIPTION OF PROJECT ..... 1  
SUBBASE GRANULAR MATERIAL ..... 1  
PLACEMENT OF HOT-MIX ASPHALT SURFACE COURSES ..... 1  
TRAFFIC CONTROL PLAN ..... 2  
PAVEMENT MARKING REMOVAL/WORK ZONE PAVEMENT MARKING REMOVAL ..... 2  
TEMPORARY CONCRETE BARRIER REFLECTORS ..... 3  
TRAFFIC CONTROL SPECIAL ..... 4  
REMOVAL OF EXISTING PRECAST PRESTRESSED CONCRETE DECK BEAMS ..... 4  
HOT-MIX ASPHALT SURFACE REMOVAL ..... 5  
ASBESTOS BEARING PAD REMOVAL (BDE) ..... 6  
CEMENT (BDE) ..... 6  
EPOXY PAVEMENT MARKINGS (BDE) ..... 8  
ERRATA FOR THE 2007 STANDARD SPECIFICATIONS (BDE) ..... 10  
HOT-MIX ASPHALT EQUIPMENT, SPREADING AND FINISHING MACHINE (BDE) ..... 12  
IMPACT ATTENUATORS, TEMPORARY (BDE) ..... 12  
LEGAL REQUIREMENTS TO BE OBSERVED (BDE) ..... 14  
NOTIFICATION OF REDUCED WIDTH (BDE) ..... 15  
PAYMENTS TO SUBCONTRACTORS (BDE) ..... 15  
RECLAIMED ASPHALT PAVEMENT (RAP) (BDE) ..... 16  
REFLECTIVE SHEETING ON CHANNELIZING DEVICES (BDE) ..... 21  
REINFORCEMENT BARS (BDE) ..... 22  
SELF-CONSOLIDATING CONCRETE FOR PRECAST PRODUCTS (BDE) ..... 24  
SUBCONTRACTOR MOBILIZATION PAYMENTS (BDE) ..... 25  
WORKING DAYS (BDE) ..... 25  
EQUIPMENT RENTAL RATES (BDE) ..... 25  
STEEL COST ADJUSTMENT (BDE) (RETURN FORM WITH BID) ..... 27  
WIDTH RESTRICTION SIGNING ..... 31

Revised 07/16/2007

**WIDTH RESTRICTION SIGNING**

Effective: May 15, 2007

Description. This work shall consist of providing, placing, maintaining, and removing width restriction signing as shown on the plans. Width restriction signing is required when the roadway width will be less than 13'-6" as measured from face to face of temporary concrete barrier and a concrete parapet, guardrail or other fixed, immovable barrier. The Contractor shall furnish all materials, equipment, labor, and other essentials necessary to accomplish this work and all other work described herein and as directed by the Engineer.

Materials. All sign post materials shall be in accordance with Articles/Sections: 1093.01 (a), and 1007.05. Galvanizing will not be required. The nominal size of wood posts shall be 4 x 4 in. (100 x 100mm).

Equipment. All equipment shall be in accordance with the Article/Section 1106.01.

Notification. The contractor shall notify the Traffic Control Supervisor, in writing, a minimum of twenty-one (21) days prior to the placement or anticipated placement of temporary concrete barrier or other width restricting measures.

The Contractor shall notify the Traffic Operations Field Technician, in writing, a minimum of two weeks (2) prior to the placement of width restriction signing to obtain the route symbol and directional signage. The Contractor shall receive the signs from the Resident Engineer.

Traffic Control Supervisor	Don Hoffman 309-671-4488
Traffic Operations Field Technician	Bill Harrmann 309-693-5176

Failure to provide required advanced notice may delay project at the expense of the Contractor.

General.

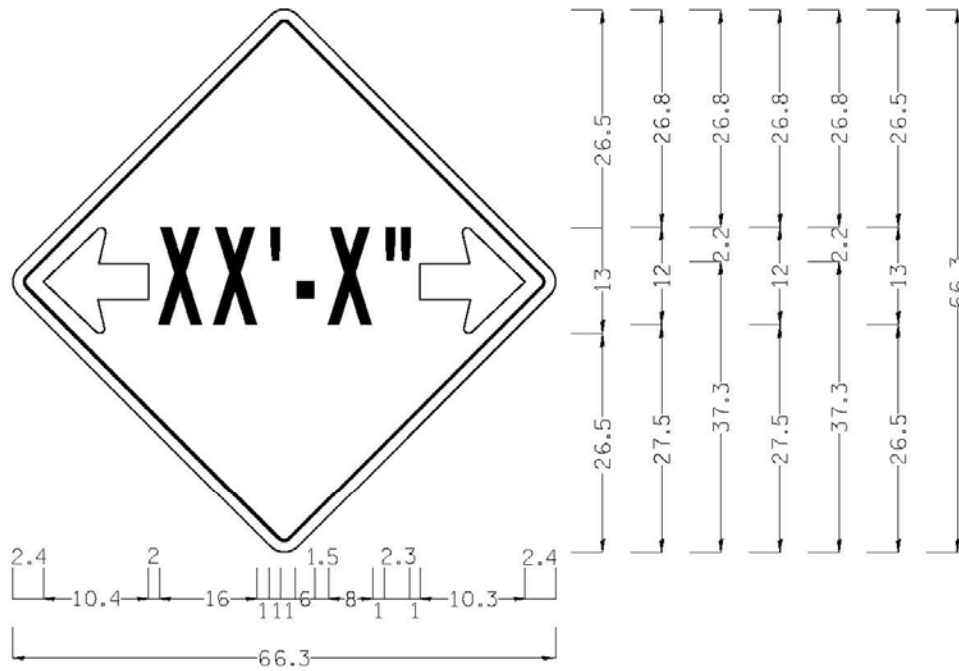
IDOT will provide the route symbol and directional (North, South, East, and West) signage. The route symbol and directional signage shall be placed, maintained, and removed by the contractor. The route symbol and directional signage shall be placed below sign W12-I103. Upon completion of the work, the Contractor shall return the route symbol and directional signage to the Resident Engineer.

Locations, distances, and quantity of signs and shall be as shown on the plan sheets. All final field locations will be marked by the Bureau of Operations, Traffic Control Supervisor. It shall be the Contractor's responsibility to make arrangements for the J.U.L.I.E. locates.

Method of Measurement. This work will be measured for payment as a lump sum.

Basis of Payment. This work will be paid for at the lump sum price for WIDTH RESTRICTION SIGNAGE.

Added 07/16/2007



(All measurements are in inches)

W12-I102

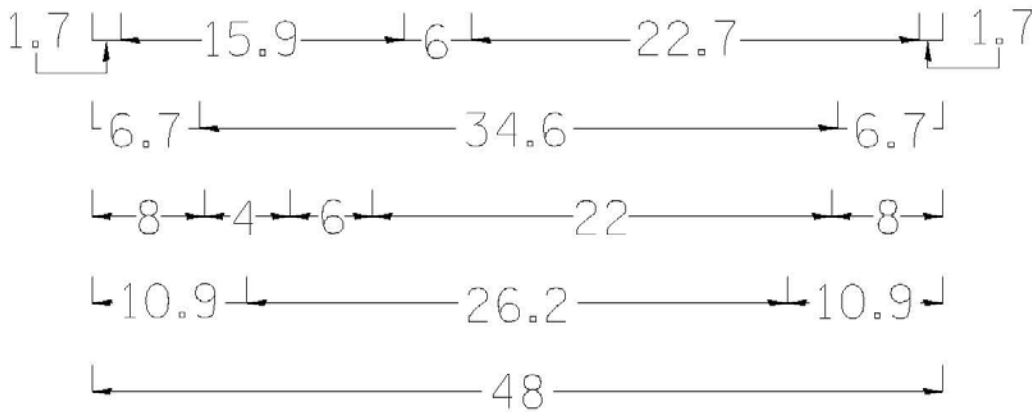
Series D Alphabet. 48" Across Sides. 1.9" Radius.  
 0.8" Border. 0.5" Indent. Black on Orange.  
 Standard Arrow Custom 10.4" x 8.1" 180°.  
 Standard Arrow Custom 10.4" x 8.1" 0°.



W12-I101 (0)

24" x 18".  
 Series D Alphabet.  
 Black on Orange.  
 0.8" Border. 0.5" Indent. Black on Orange.

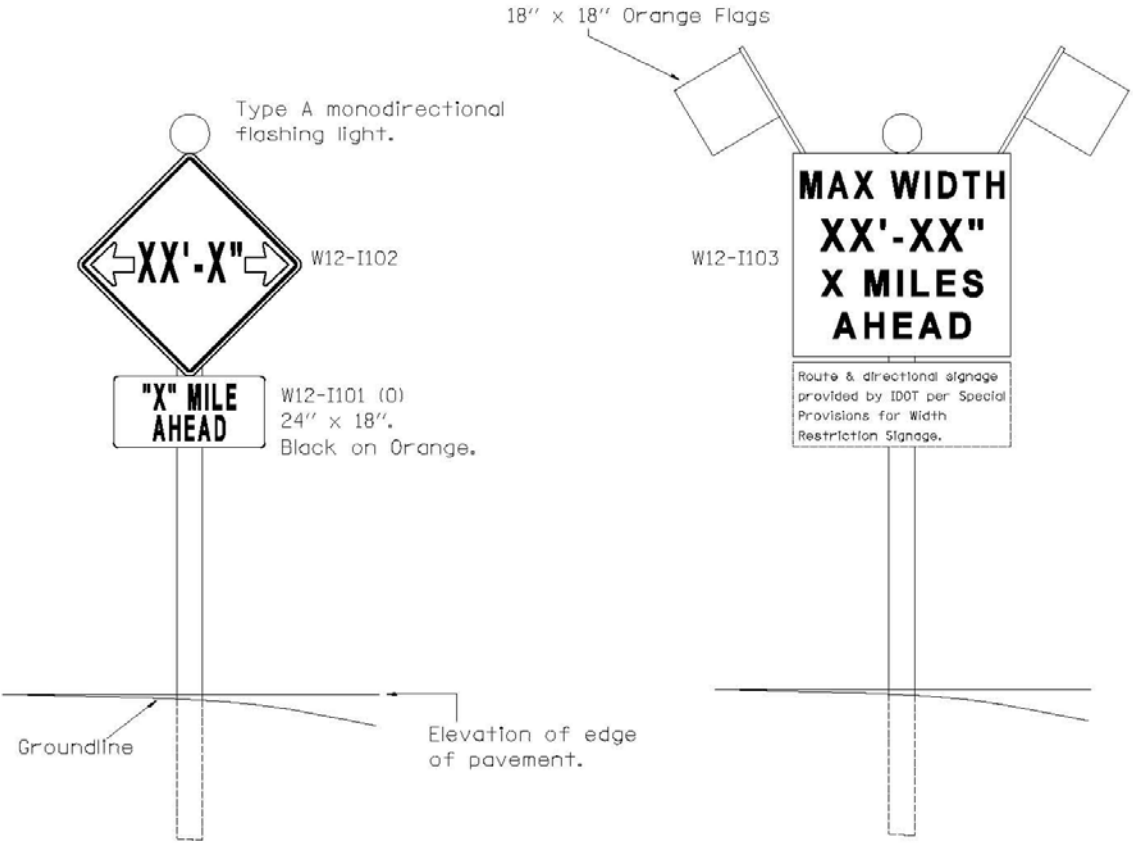
Lettering centered horizontally and vertically.



(All measurements are in inches)

W12-I103

Series D Alphabet. No Border.  
Black on White.



All post mounted signs shall be installed according to Std. 702001.