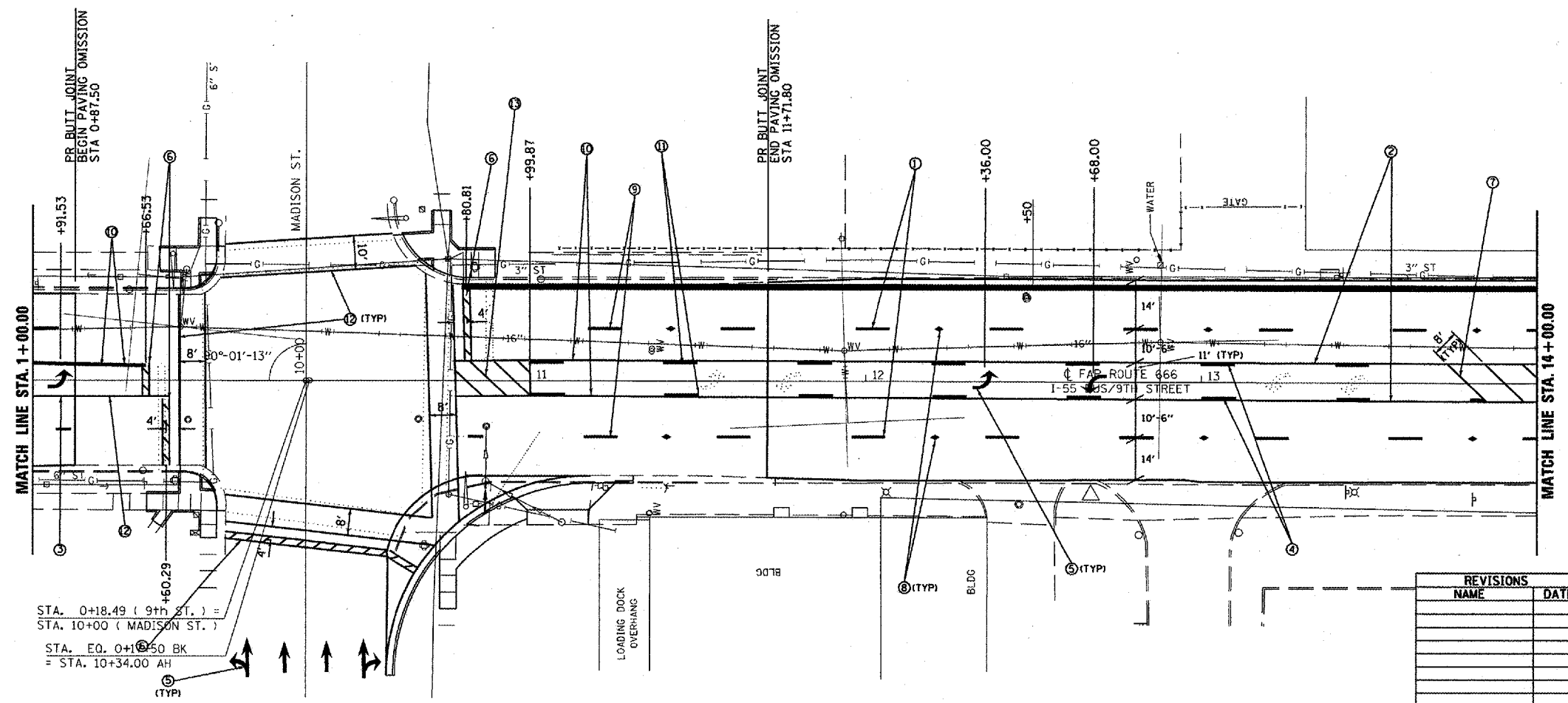
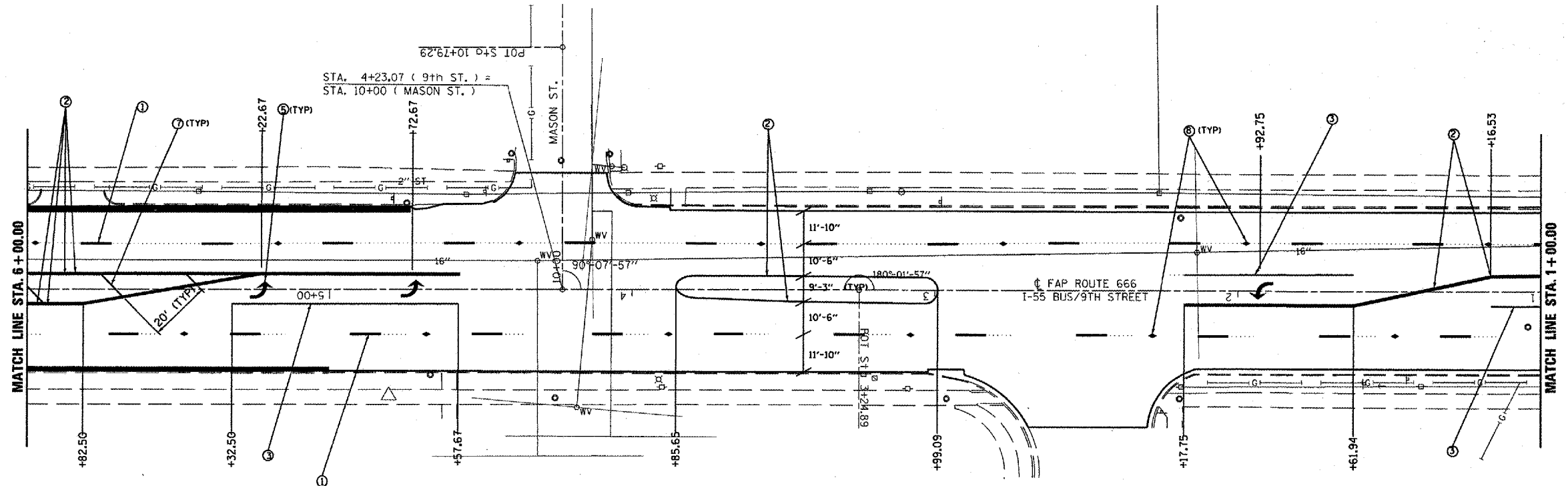
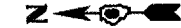


FAP RTE.	SECTION	COUNTY	TOTAL SHEETS	SHEET NO.
666	SP-Z, RS-4	SANGAMON	80	46
STA.		TO STA.		
FED. ROAD DIST. NO.		ILLINOIS FED. AID PROJECT		



- PAVEMENT MARKING LEGEND**
- ① PR PPPM TY B (SKIP-DASH), WHITE, 5"
  - ② PR THERMOPLASTIC PM (SOLID), YELLOW, 5"
  - ③ PR PPPM TY B (SOLID), WHITE, 6"
  - ④ PR THERMOPLASTIC PM (SKIP-DASH), YELLOW, 5"
  - ⑤ PR PPPM TY B, LETTERS & SYMBOLS
  - ⑥ PR PPPM TY B (SOLID), WHITE, 24"
  - ⑦ PR THERMOPLASTIC PM (SOLID), YELLOW, 12"
  - ⑧ PR RAISED REFLECTIVE PAVEMENT MARKER
  - ⑨ PR POLYUREA PM TY I (SKIP-DASH), WHITE, 5"
  - ⑩ PR POLYUREA PM TY I (SOLID), YELLOW, 5"
  - ⑪ PR POLYUREA PM TY I (SKIP-DASH), YELLOW, 5"
  - ⑫ PR POLYUREA PM TY I (SOLID), WHITE, 6"
  - ⑬ PR POLYUREA PM TY I (SOLID), YELLOW, 12"



REVISIONS	
NAME	DATE

ILLINOIS DEPARTMENT OF TRANSPORTATION  
**PAVEMENT MARKING SHEET**  
**FAP ROUTE 666 (I-55 BUS/9TH STREET)**  
**SECTION SP-Z, RS-4**  
**SANGAMON COUNTY**  
**SHEET 6 OF 12**

SCALE: VERT. \_\_\_\_\_  
 HORIZ. \_\_\_\_\_  
 DATE \_\_\_\_\_ DRAWN BY \_\_\_\_\_  
 CHECKED BY \_\_\_\_\_